

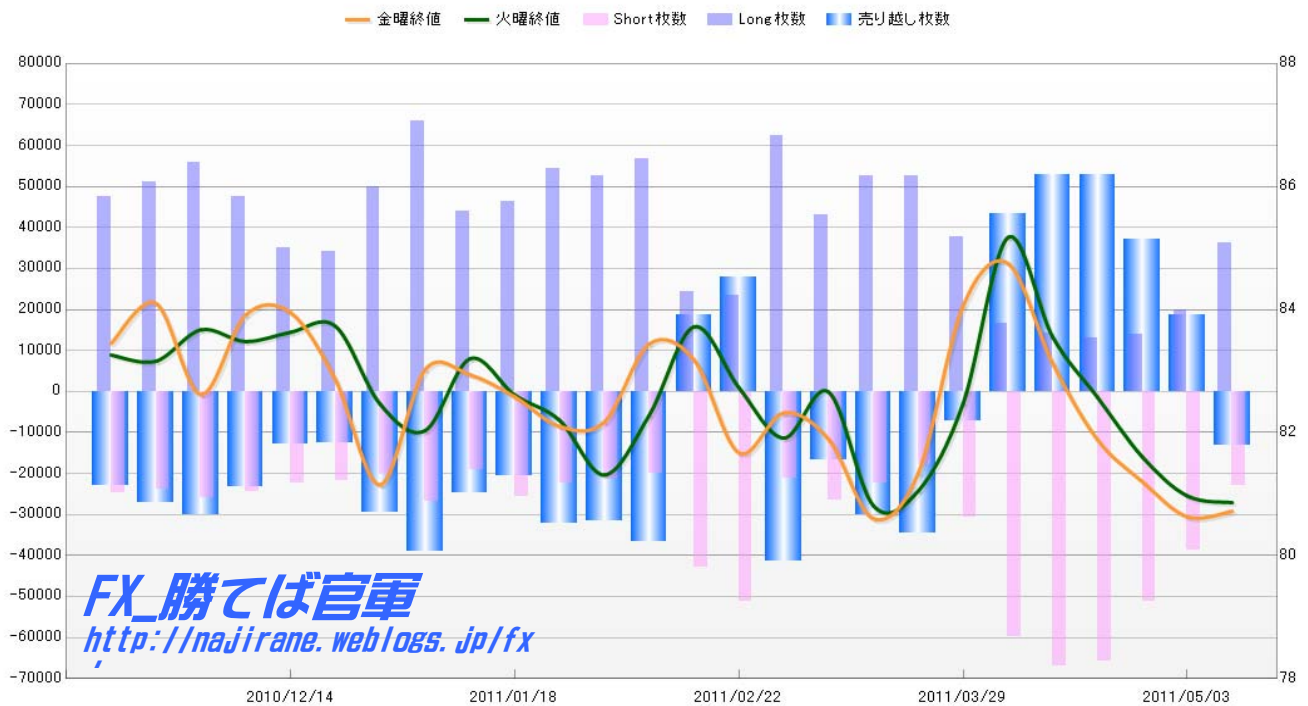
**JAPANESE YEN - CHICAGO MERCANTILE EXCHANGE  
FUTURES ONLY POSITIONS**

Code-097741

2011/05/13 NYクローズ時公表値

Report_Date	Non Commercial Positions								火曜締めドル円		週末締めドル円レート	
	Long	増減	Short	増減	売り越し	増減	売買計	増減	Close	前週比	Close	前週比
2011/05/10	36100	82.5%	23046	-40.3%	-13054	-169.4%	59146	1.3%	80.86	-0.1%	80.72	0.1%
2011/05/03	19779	40.6%	38598	-24.4%	18819	-49.1%	58377	-10.4%	80.97	-0.8%	80.63	-0.7%
2011/04/26	14063	8.7%	51060	-22.5%	36997	-30.2%	65123	-17.4%	81.60	-1.2%	81.20	-0.8%
2011/04/19	12935	-8.8%	65918	-1.7%	52983	0.2%	78853	-2.9%	82.57	-1.2%	81.88	-1.5%
2011/04/12	14183	-14.1%	67060	12.2%	52877	22.3%	81243	6.5%	83.55	-1.9%	83.12	-1.9%
2011/04/05	16516	-56.2%	59747	94.7%	43231	-713.0%	76263	11.5%	85.17	3.3%	84.75	0.8%
2011/03/29	37737	-28.1%	30685	70.9%	-7052	-79.6%	68422	-2.9%	82.47	1.8%	84.06	3.3%
2011/03/22	52484	-0.2%	17959	-19.7%	-34525	14.2%	70443	-6.0%	81.05	0.3%	81.34	0.9%
2011/03/15	52603	21.8%	22373	-15.7%	-30230	81.5%	74976	7.5%	80.81	-2.3%	80.60	-1.5%
2011/03/08	43205	-30.8%	26549	25.7%	-16656	-59.6%	69754	-16.5%	82.68	0.9%	81.85	-0.6%
2011/03/01	62396	166.0%	21122	-58.7%	-41274	-248.8%	83518	11.9%	81.91	-1.1%	82.32	0.8%
2011/02/22	23457	-3.8%	51203	19.3%	27746	49.6%	74660	10.9%	82.78	-1.1%	81.68	-1.8%
2011/02/15	24389	-56.9%	42937	116.0%	18548	-150.5%	67326	-12.0%	83.72	1.8%	83.18	-0.3%
2011/02/08	56607	7.5%	19876	-6.1%	-36731	16.7%	76483	3.6%	82.28	1.1%	83.44	1.5%
2011/02/01	52648	-3.4%	21167	-5.0%	-31481	-2.3%	73815	-3.9%	81.37	-1.0%	82.19	0.1%
2011/01/25	54495	17.8%	22277	-13.4%	-32218	56.9%	76772	6.6%	82.20	-0.5%	82.12	-0.6%
2011/01/18	46258	5.4%	25729	34.4%	-20529	-17.0%	71987	14.2%	82.61	-0.9%	82.58	-0.3%
2011/01/11	43884	-33.4%	19148	-28.7%	-24736	-36.7%	63032	-32.1%	83.33	1.5%	82.86	-0.3%
2011/01/04	65924	32.0%	26859	32.3%	-39065	31.8%	92783	32.1%	82.09	-0.4%	83.14	2.5%
2010/12/28	49941	45.8%	20300	-6.5%	-29641	136.6%	70241	25.5%	82.41	-1.6%	81.15	-2.1%
2010/12/21	34243	-2.2%	21714	-2.5%	-12529	-1.6%	55957	-2.3%	83.74	0.1%	82.86	-1.3%
2010/12/14	34996	-26.6%	22261	-8.7%	-12735	-45.3%	57257	-20.5%	83.63	0.2%	83.97	0.0%
2010/12/07	47661	-14.6%	24373	-5.5%	-23288	-22.4%	72034	-11.7%	83.47	-0.2%	83.94	1.7%
2010/11/30	55791	9.0%	25785	7.6%	-30006	10.3%	81576	8.6%	83.66	0.6%	82.53	-1.9%
2010/11/23	51161	7.5%	23969	-3.1%	-27192	19.0%	75130	3.9%	83.13	-0.3%	84.09	0.7%
2010/11/16	47595		24737		-22858		72332		83.38		83.52	

**JAPANESE YEN - CHICAGO MERCANTILE EXCHANGE  
FUTURES ONLY POSITIONS**



EURO FX - CHICAGO MERCANTILE EXCHANGE

Code-099741

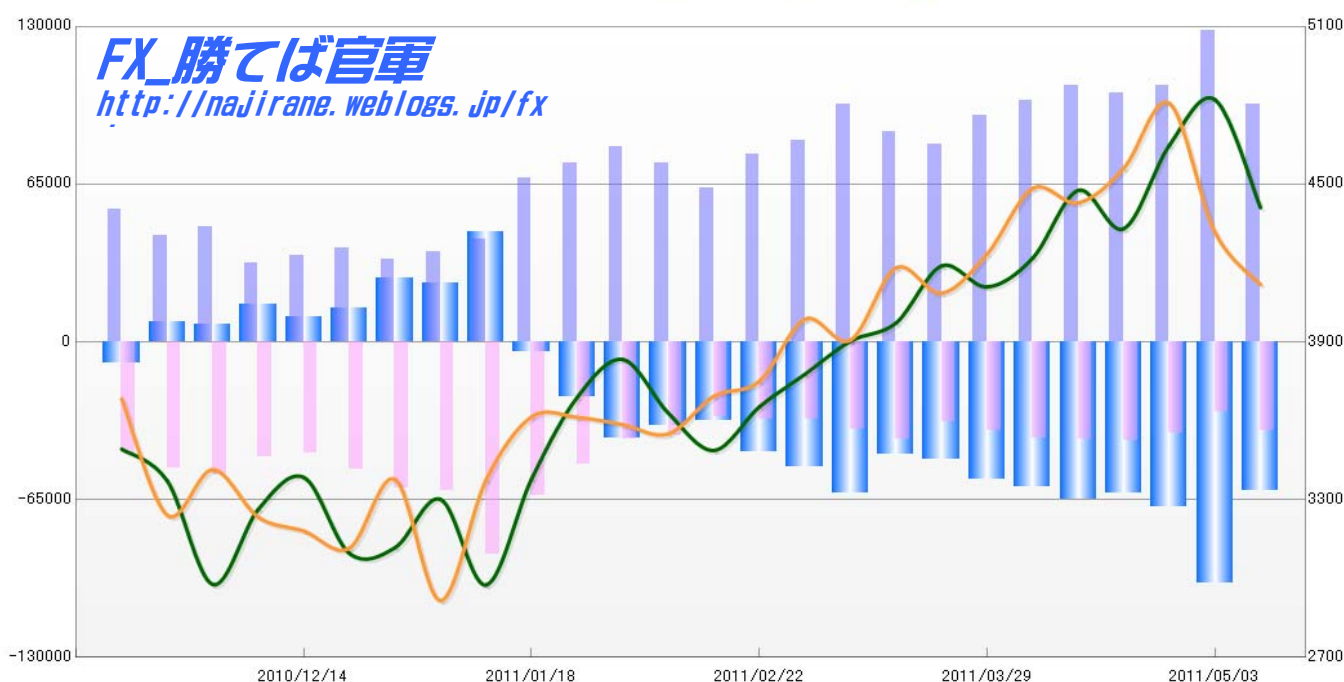
FUTURES ONLY POSITIONS

2011/05/13 NYクローズ時公表値

Report_Date	Non Commercial Positions								火曜締め終値		金曜締め終値	
	Long	増減	Short	増減	売り越し	増減	売買計	増減	Close	前週比	Close	前週比
2011/05/10	98054	-23.7%	36607	26.5%	-61447	-38.3%	134661	-14.4%	1.4411	-2.8%	1.4118	-1.4%
2011/05/03	128460	21.6%	28944	-22.6%	-99516	45.7%	157404	10.0%	1.4822	1.2%	1.4317	-3.3%
2011/04/26	105683	2.9%	37404	-7.6%	-68279	9.8%	143087	-0.1%	1.4648	2.2%	1.4808	1.7%
2011/04/19	102686	-2.6%	40491	0.1%	-62195	-4.3%	143177	-1.8%	1.4331	-1.0%	1.4561	0.9%
2011/04/12	105425	6.1%	40440	2.3%	-64985	8.6%	145865	5.0%	1.4477	1.8%	1.4429	-0.4%
2011/04/05	99405	6.9%	39548	8.6%	-59857	5.7%	138953	7.4%	1.4219	0.8%	1.4484	1.7%
2011/03/29	93031	14.0%	36401	9.6%	-56630	17.1%	129432	12.8%	1.4109	-0.6%	1.4235	1.1%
2011/03/22	81574	-5.7%	33221	-17.3%	-48353	4.4%	114795	-9.4%	1.4189	1.6%	1.4085	-0.7%
2011/03/15	86506	-11.9%	40190	12.0%	-46316	-25.6%	126696	-5.5%	1.3972	0.5%	1.4182	2.0%
2011/03/08	98171	18.1%	35877	12.8%	-62294	21.4%	134048	16.7%	1.3902	0.9%	1.3902	-0.6%
2011/03/01	83104	7.3%	31796	-0.2%	-51308	12.5%	114900	5.1%	1.3777	0.9%	1.3987	1.7%
2011/02/22	77454	22.2%	31856	3.0%	-45598	40.5%	109310	15.9%	1.3655	1.2%	1.3749	0.4%
2011/02/15	63395	-13.8%	30931	-20.2%	-32464	-6.5%	94326	-16.0%	1.3487	-1.0%	1.3693	1.1%
2011/02/08	73502	-8.6%	38768	-4.2%	-34734	-13.0%	112270	-7.1%	1.3629	-1.4%	1.3550	-0.2%
2011/02/01	80381	9.4%	40447	-20.0%	-39934	74.4%	120828	-2.6%	1.3825	1.1%	1.3583	-0.2%
2011/01/25	73488	9.2%	50587	-20.0%	-22901	457.3%	124075	-4.9%	1.3681	2.2%	1.3611	-0.1%
2011/01/18	67309	58.9%	63200	-27.8%	-4109	-109.1%	130509	0.5%	1.3386	3.2%	1.3621	1.8%
2011/01/11	42359	14.2%	87541	42.8%	45182	86.7%	129900	32.0%	1.2971	-2.5%	1.3386	3.7%
2011/01/04	37102	9.7%	61303	1.6%	24201	-8.6%	98405	4.5%	1.3310	1.5%	1.2909	-3.6%
2010/12/28	33833	-12.4%	60312	14.5%	26479	87.9%	94145	3.1%	1.3109	0.1%	1.3386	2.1%
2010/12/21	38604	8.2%	52697	14.6%	14093	36.8%	91301	11.8%	1.3099	-2.1%	1.3112	-0.6%
2010/12/14	35689	10.4%	45993	-3.4%	10304	-32.6%	81682	2.2%	1.3379	0.9%	1.3188	-0.3%
2010/12/07	32322	-31.6%	47612	-12.7%	15290	111.0%	79934	-21.5%	1.3265	2.2%	1.3226	-1.4%
2010/11/30	47264	8.2%	54512	4.9%	7248	-12.6%	101776	6.4%	1.2981	-3.0%	1.3413	1.3%
2010/11/23	43670	-20.2%	51963	12.7%	8293	-196.4%	95633	-5.1%	1.3379	-0.8%	1.3240	-3.2%
2010/11/16	54708		46102		-8606		100810		1.3483		1.3672	

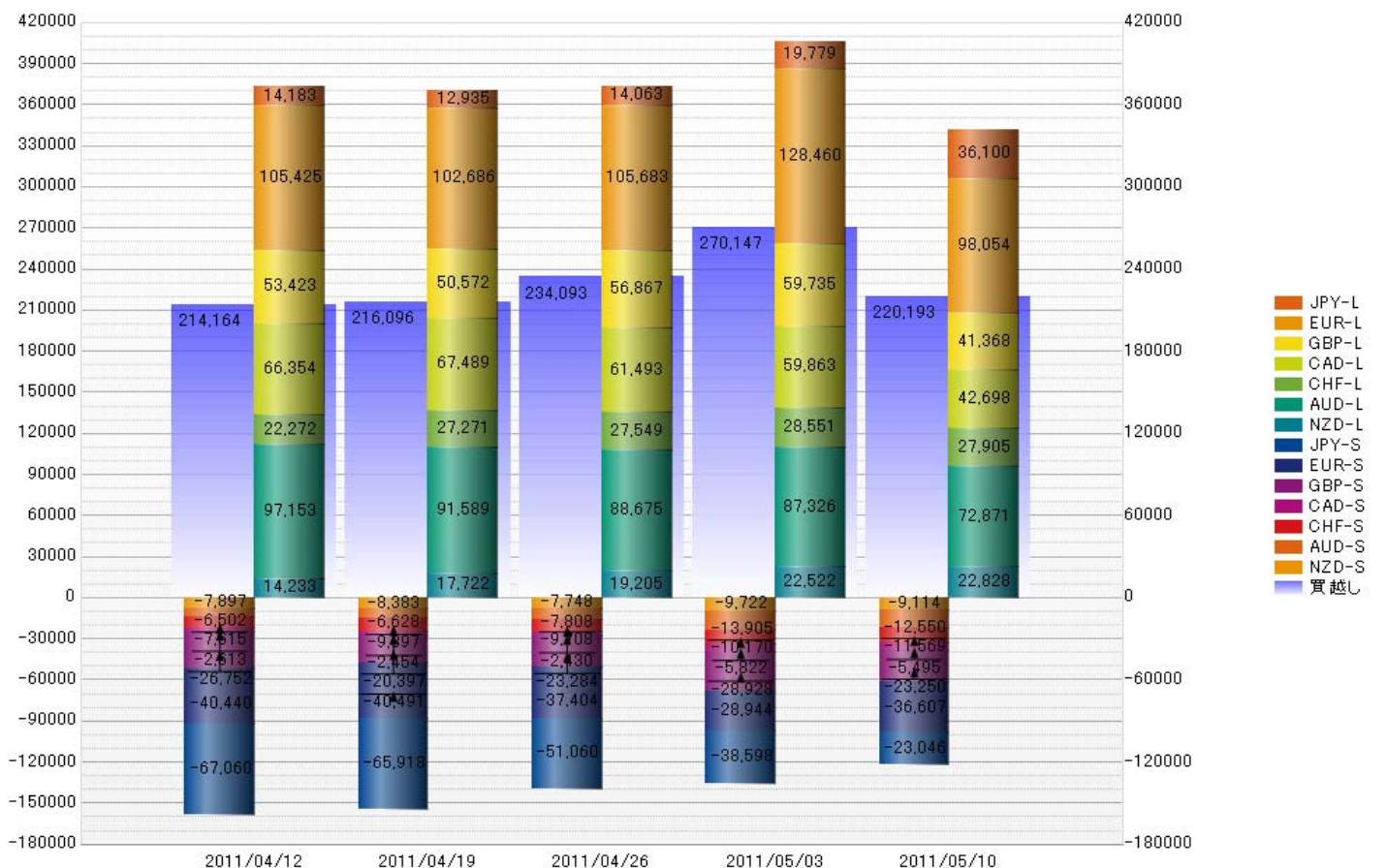
EURO FX - CHICAGO MERCANTILE EXCHANGE  
FUTURES ONLY POSITIONS

— 金曜締め週終値 — 火曜締め週終値 — Short枚数 — Long枚数 — 売り越し枚数



	2011/04/12			2011/04/19			2011/04/26			2011/05/03			2011/05/10		
	Long	Short	売り越し	Long	Short	売り越し	Long	Short	売り越し	Long	Short	売り越し	Long	Short	売り越し
JPY	14183	67060	52877	12935	65918	52983	14063	51060	36997	19779	38598	18819	36100	23046	-13054
	前週比 枚数増減 (枚)			-1248	-1142	106	1128	-14858	-15986	5716	-12462	-18178	16321	-15552	-31873
	前週比 枚数増減 (%)			-8.80%	-1.70%	0.20%	8.72%	-22.54%	-30.17%	40.65%	-24.41%	-49.13%	82.52%	-40.29%	-169.37%
EUR	105425	40440	-64985	102686	40491	-62195	105683	37404	-68279	128460	28944	-99516	98054	36607	-61447
	前週比 枚数増減 (枚)			-2739	51	2790	2997	-3087	-6084	22777	-8460	-31237	-30406	7663	38069
	前週比 枚数増減 (%)			-2.60%	0.13%	-4.29%	2.92%	-7.62%	9.78%	21.55%	-22.62%	45.75%	-23.67%	26.48%	-38.25%
GBP	53423	26752	-26671	50572	20397	-30175	56867	23284	-33583	59735	28928	-30807	41368	23250	-18118
	前週比 枚数増減 (枚)			-2851	-6355	-3504	6295	2887	-3408	2868	5644	2776	-18367	-5678	12689
	前週比 枚数増減 (%)			-5.34%	-23.76%	13.14%	12.45%	14.15%	11.29%	5.04%	24.24%	-8.27%	-30.75%	-19.63%	-41.19%
AUD	97153	6502	-90651	91589	6628	-84961	88675	7808	-80867	87326	13905	-73421	72871	12550	-60321
	前週比 枚数増減 (枚)			-5564	126	5690	-2914	1180	4094	-1349	6097	7446	-14455	-1355	13100
	前週比 枚数増減 (%)			-5.73%	1.94%	-6.28%	-3.18%	17.80%	-4.82%	-1.52%	78.09%	-9.21%	-16.55%	-9.74%	-17.84%
CAD	66354	2613	-63741	67489	2454	-65035	61493	2430	-59063	59863	5822	-54041	42698	5495	-37203
	前週比 枚数増減 (枚)			1135	-159	-1294	-5996	-24	5972	-1630	3392	5022	-17165	-327	16838
	前週比 枚数増減 (%)			1.71%	-6.08%	2.03%	-8.88%	-0.98%	-9.18%	-2.65%	139.59%	-8.50%	-28.67%	-5.62%	-31.16%
CHF	22272	7615	-14657	27271	9897	-17374	27549	9708	-17841	28551	10170	-18381	27905	11569	-16336
	前週比 枚数増減 (枚)			4999	2282	-2717	278	-189	-467	1002	462	-540	-646	1399	2045
	前週比 枚数増減 (%)			22.45%	29.97%	18.54%	1.02%	-1.91%	2.69%	3.64%	4.76%	3.03%	-2.26%	13.76%	-11.13%
NZD	14233	7897	-6336	17722	8383	-9339	19205	7748	-11457	22522	9722	-12800	22828	9114	-13714
	前週比 枚数増減 (枚)			3489	486	-3003	1483	-635	-2118	3317	1974	-1343	306	-608	-914
	前週比 枚数増減 (%)			24.51%	6.15%	47.40%	8.37%	-7.57%	22.68%	17.27%	25.48%	11.72%	1.36%	-6.25%	7.14%
MXN	131688	6842	-124846	142812	8683	-134129	138516	6710	-131806	127995	3735	-124260	123092	5027	-118065
	前週比 枚数増減 (枚)			11124	1841	-9283	-4296	-1973	2323	-10521	-2975	7546	-4903	1292	6195
	前週比 枚数増減 (%)			8.45%	26.91%	7.44%	-3.01%	-22.72%	-1.73%	-7.60%	-44.34%	-5.73%	-3.83%	34.59%	-4.99%
Total	504731	165721	-339010	513076	162851	-350225	512051	146152	-365899	534231	139824	-394407	464916	126658	-338258
	前週比 枚数増減 (枚)			8345	-2870	-11215	-1025	-16699	-15674	22180	-6328	-28508	-69315	-13166	56149
	前週比 枚数増減 (%)			1.65%	-1.73%	3.31%	-0.20%	-10.25%	4.48%	4.33%	-4.33%	7.79%	-12.97%	-9.42%	-14.24%
Total (MXN除く)	373043	158879	-214164	370264	154168	-216096	373535	139442	-234093	406236	136089	-270147	341824	121631	-220193
	前週比 枚数増減 (枚)			-2779	-4711	-1932	3271	-14726	-17997	32701	-3353	-36054	-64412	-14458	49954
	前週比 枚数増減 (%)			-0.74%	-2.97%	0.90%	0.88%	-9.55%	8.33%	8.75%	-2.40%	15.40%	-15.86%	-10.62%	-18.49%

### 直近5週 CFTC IMM主要7通貨の構成



**JAPANESE YEN - CHICAGO MERCANTILE EXCHANGE  
FUTURES ONLY POSITIONS**

**Code-097741  
2011/05/13 公表値**

Date	投機筋集計				実需筋集計				投機筋+実需筋合計				ドル円終値	
	円買い	円売り	売り越し	売買計	円買い	円売り	売り越し	売買計	円買い	円売り	売り越し	売買計	火曜締め	金曜締め
2011/05/10	36100	23046	-13054	59146	40579	41896	1317	82475	76679	64942	-11737	141621	80.86	80.72
2011/05/03	19779	38598	18819	58377	58959	27519	-31440	86478	78738	66117	-12621	144855	80.97	80.63
2011/04/26	14063	51060	36997	65123	76538	22612	-53926	99150	90601	73672	-16929	164273	81.60	81.20
2011/04/19	12935	65918	52983	78853	96035	21785	-74250	117820	108970	87703	-21267	196673	82.57	81.88
2011/04/12	14183	67060	52877	81243	95231	18248	-76983	113479	109414	85308	-24106	194722	83.55	83.12
2011/04/05	16516	59747	43231	76263	81153	19159	-61994	100312	97669	78906	-18763	176575	85.17	84.75
2011/03/29	37737	30685	-7052	68422	33152	38976	5824	72128	70889	69661	-1228	140550	82.47	84.06
2011/03/22	52484	17959	-34525	70443	30066	65912	35846	95978	82550	83871	1321	166421	81.05	81.34
2011/03/15	52603	22373	-30230	74976	29577	56979	27402	86556	82180	79352	-2828	161532	80.81	80.60
2011/03/08	43205	26549	-16656	69754	60542	68760	8218	129302	103747	95309	-8438	199056	82.68	81.85
2011/03/01	62396	21122	-41274	83518	47763	79625	31862	127388	110159	100747	-9412	210906	81.91	82.32
2011/02/22	23457	51203	27746	74660	78336	37856	-40480	116192	101793	89059	-12734	190852	82.78	81.68
2011/02/15	24389	42937	18548	67326	71070	37558	-33512	108628	95459	80495	-14964	175954	83.72	83.18
2011/02/08	56607	19876	-36731	76483	34434	63374	28940	97808	91041	83250	-7791	174291	82.28	83.44
2011/02/01	52648	21167	-31481	73815	36222	61666	25444	97888	88870	82833	-6037	171703	81.37	82.19
2011/01/25	54495	22277	-32218	76772	36405	63818	27413	100223	90900	86095	-4805	176995	82.20	82.12
2011/01/18	46258	25729	-20529	71987	38744	53151	14407	91895	85002	78880	-6122	163882	82.61	82.58
2011/01/11	43884	19148	-24736	63032	39826	57651	17825	97477	83710	76799	-6911	160509	83.33	82.86
2011/01/04	65924	26859	-39065	92783	35714	74487	38773	110201	101638	101346	-292	202984	82.09	83.14
2010/12/28	49941	20300	-29641	70241	35204	59053	23849	94257	85145	79353	-5792	164498	82.41	81.15
2010/12/21	34243	21714	-12529	55957	36574	38943	2369	75517	70817	60657	-10160	131474	83.74	82.86
2010/12/14	34996	22261	-12735	57257	41019	43890	2871	84909	76015	66151	-9864	142166	83.63	83.97
2010/12/07	47661	24373	-23288	72034	55384	74207	18823	129591	103045	98580	-4465	201625	83.47	83.94
2010/11/30	55791	25785	-30006	81576	51521	75586	24065	127107	107312	101371	-5941	208683	83.66	82.53
2010/11/23	51161	23969	-27192	75130	51366	74625	23259	125991	102527	98594	-3933	201121	83.13	84.09
2010/11/16	47595	24737	-22858	72332	54366	73253	18887	127619	101961	97990	-3971	199951	83.38	83.52

**JAPANESE YEN - CHICAGO MERCANTILE EXCHANGE  
FUTURES ONLY POSITIONS Code-097741**

