

JAPANESE YEN - CHICAGO MERCANTILE EXCHANGE
2017/05/16 ~ 2017/11/07

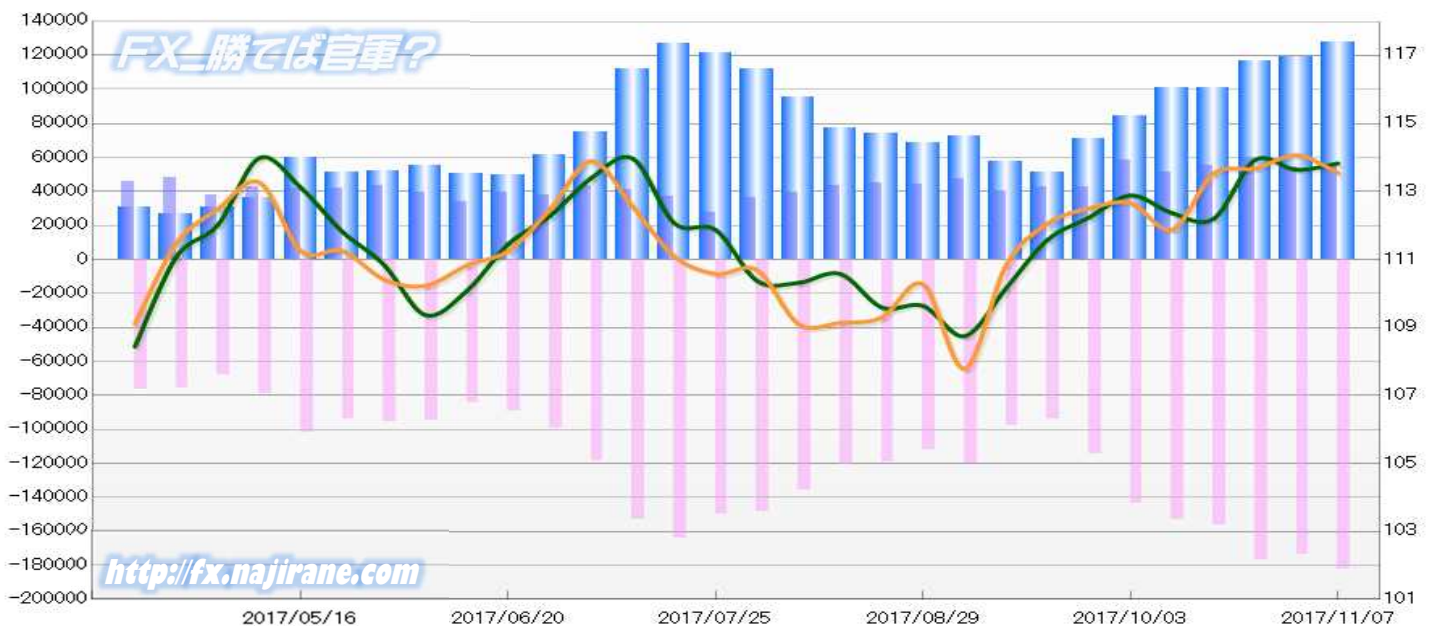
Code-097741

2017/11/10 NYクローズ時公表値

Report_Date	Non Commercial Positions												火曜日 引け値	金曜日 引け値
	Long	増減	増減(%)	Short	増減	増減(%)	売り越し	増減	増減(%)	売買計	増減	増減(%)		
2017/11/07	54336	-249	-0.5%	182184	8730	5.0%	127848	8979	7.6%	236520	8481	3.7%	113.83	113.55
2017/10/31	54585	-5492	-9.1%	173454	-3480	-2.0%	118869	2012	1.7%	228039	-8972	-3.8%	113.64	114.07
2017/10/24	60077	5067	9.2%	176934	20638	13.2%	116857	15571	15.4%	237011	25705	12.2%	113.93	113.68
2017/10/17	55010	3355	6.5%	156296	3222	2.1%	101286	-133	-0.1%	211306	6577	3.2%	112.20	113.53
2017/10/10	51655	-7115	-12.1%	153074	9661	6.7%	101419	16776	19.8%	204729	2546	1.3%	112.37	111.88
2017/10/03	58770	15807	36.8%	143413	29103	25.5%	84643	13296	18.6%	202183	44910	28.6%	112.89	112.66
2017/09/26	42963	528	1.2%	114310	20553	21.9%	71347	20025	39.0%	157273	21081	15.5%	112.24	112.51
2017/09/19	42435	1793	4.4%	93757	-4182	-4.3%	51322	-5975	-10.4%	136192	-2389	-1.7%	111.58	112.06
2017/09/12	40642	-6643	-14.0%	97939	-22291	-18.5%	57297	-15648	-21.5%	138581	-28934	-17.3%	110.16	110.84
2017/09/05	47285	3396	7.7%	120230	7817	7.0%	72945	4421	6.5%	167515	11213	7.2%	108.75	107.79
2017/08/29	43889	-1273	-2.8%	112413	-6835	-5.7%	68524	-5562	-7.5%	156302	-8108	-4.9%	109.64	110.27
2017/08/22	45162	1854	4.3%	119248	-1552	-1.3%	74086	-3406	-4.4%	164410	302	0.2%	109.59	109.30
2017/08/15	43308	3498	8.8%	120800	-14823	-10.9%	77492	-18321	-19.1%	164108	-11325	-6.5%	110.58	109.14
2017/08/08	39810	3365	9.2%	135623	-13018	-8.8%	95813	-16383	-14.6%	175433	-9653	-5.2%	110.32	109.10
2017/08/01	36445	8427	30.1%	148641	-866	-0.6%	112196	-9293	-7.6%	185086	7561	4.3%	110.37	110.69
2017/07/25	28018	-9401	-25.1%	149507	-14831	-9.0%	121489	-5430	-4.3%	177525	-24232	-12.0%	111.87	110.58
2017/07/18	37419	-3359	-8.2%	164338	11435	7.5%	126919	14794	13.2%	201757	8076	4.2%	112.07	111.10
2017/07/11	40778	-2870	-6.6%	152903	34219	28.8%	112125	37089	49.4%	193681	31349	19.3%	113.97	112.55
2017/07/03	43648	5394	14.1%	118684	19080	19.2%	75036	13686	22.3%	162332	24474	17.8%	113.40	113.90
2017/06/27	38254	-1244	-3.1%	99604	10147	11.3%	61350	11391	22.8%	137858	8903	6.9%	112.28	112.47
2017/06/20	39498	5338	15.6%	89457	4744	5.6%	49959	-594	-1.2%	128955	10082	8.5%	111.46	111.26
2017/06/13	34160	-5576	-14.0%	84713	-10050	-10.6%	50553	-4474	-8.1%	118873	-15626	-11.6%	110.08	110.83
2017/06/06	39736	-3668	-8.5%	94763	-916	-1.0%	55027	2752	5.3%	134499	-4584	-3.3%	109.37	110.23
2017/05/30	43404	1484	3.5%	95679	2103	2.2%	52275	619	1.2%	139083	3587	2.6%	110.85	110.42
2017/05/23	41920	-43	-0.1%	93576	-8395	-8.2%	51656	-8352	-13.9%	135496	-8438	-5.9%	111.82	111.26
2017/05/16	41963			101971			60008			143934			113.11	111.25

JAPANESE YEN - CHICAGO MERCANTILE EXCHANGE
FUTURES ONLY POSITIONS

— 金曜終値 — 火曜終値 — Short枚数 — Long枚数 — 売り越し枚数(マイナスの場合は買越しと読替え)



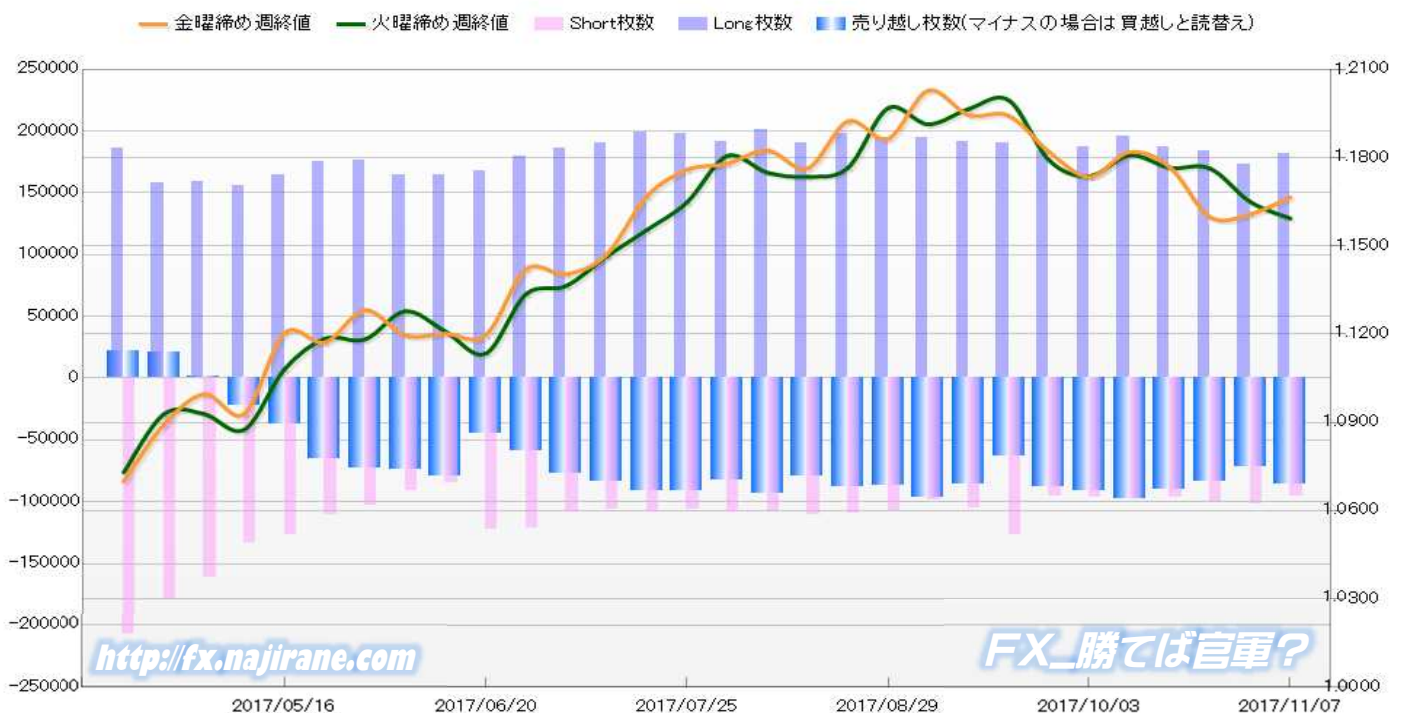
EURO FX - CHICAGO MERCANTILE EXCHANGE
2017/05/16 ~ 2017/11/07

Code-099741

2017/11/10 NYクローズ時公表値

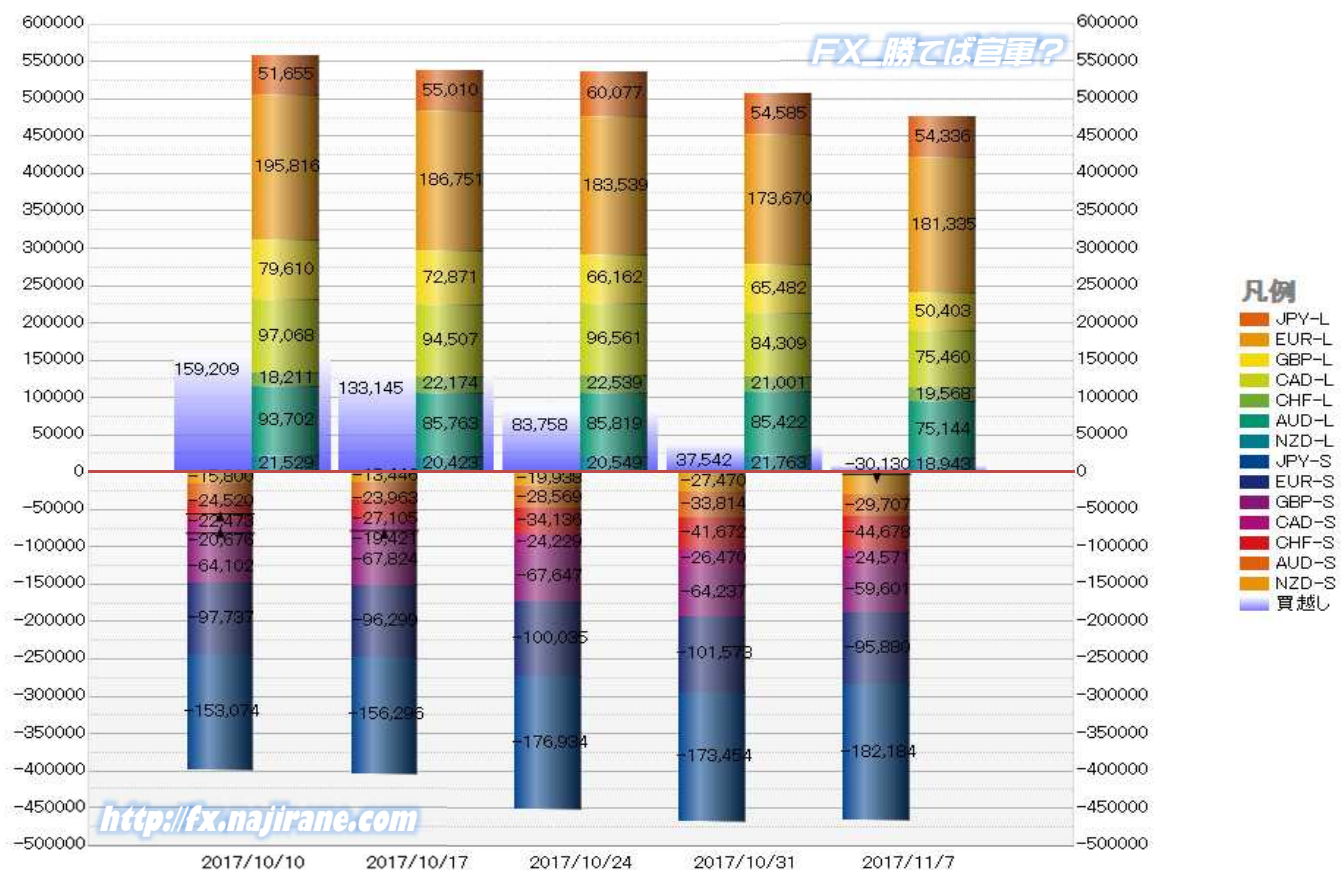
Report_Date	Non Commercial Positions									火曜日 引け値	金曜日 引け値			
	Long	増減		Short	増減		売り越し	増減						
2017/11/07	181335	7665	4.4%	95880	-5693	-5.6%	-85455	13358	18.5%	277215	1972	0.7%	1.1593	1.1666
2017/10/31	173670	-9869	-5.4%	101573	1538	1.5%	-72097	-11407	-13.7%	275243	-8331	-2.9%	1.1650	1.1608
2017/10/24	183539	-3212	-1.7%	100035	3736	3.9%	-83504	-6948	-7.7%	283574	524	0.2%	1.1764	1.1598
2017/10/17	186751	-9065	-4.6%	96299	-1438	-1.5%	-90452	-7627	-7.8%	283050	-10503	-3.6%	1.1766	1.1768
2017/10/10	195816	8763	4.7%	97737	1517	1.6%	-98079	7246	8.0%	293553	10280	3.6%	1.1808	1.1819
2017/10/03	187053	3374	1.8%	96220	708	0.7%	-90833	2666	3.0%	283273	4082	1.5%	1.1737	1.1735
2017/09/26	183679	-6346	-3.3%	95512	-31760	-25.0%	-88167	25414	40.5%	279191	-38106	####	1.1791	1.1820
2017/09/19	190025	-1077	-0.6%	127272	22228	21.2%	-62753	-23305	-27.1%	317297	21151	7.1%	1.1995	1.1943
2017/09/12	191102	-3874	-2.0%	105044	6377	6.5%	-86058	-10251	-10.6%	296146	2503	0.9%	1.1965	1.1945
2017/09/05	194976	645	0.3%	98667	-9145	-8.5%	-96309	9790	11.3%	293643	-8500	-2.8%	1.1914	1.2028
2017/08/29	194331	-3487	-1.8%	107812	-2030	-1.8%	-86519	-1457	-1.7%	302143	-5517	-1.8%	1.1968	1.1865
2017/08/22	197818	7482	3.9%	109842	-1227	-1.1%	-87976	8709	11.0%	307660	6255	2.1%	1.1765	1.1924
2017/08/15	190336	-10895	-5.4%	111069	3523	3.3%	-79267	-14418	-15.4%	301405	-7372	-2.4%	1.1735	1.1764
2017/08/08	201231	9754	5.1%	107546	-1294	-1.2%	-93685	11048	13.4%	308777	8460	2.8%	1.1749	1.1825
2017/08/01	191477	-6179	-3.1%	108840	2026	1.9%	-82637	-8205	-9.0%	300317	-4153	-1.4%	1.1806	1.1780
2017/07/25	197656	-1884	-0.9%	106814	-1405	-1.3%	-90842	-479	-0.5%	304470	-3289	-1.1%	1.1648	1.1759
2017/07/18	199540	9273	4.9%	108219	1740	1.6%	-91321	7533	9.0%	307759	11013	3.7%	1.1554	1.1668
2017/07/11	190267	4342	2.3%	106479	-1982	-1.8%	-83788	6324	8.2%	296746	2360	0.8%	1.1465	1.1470
2017/07/03	185925	6254	3.5%	108461	-12515	-10.3%	-77464	18769	32.0%	294386	-6261	-2.1%	1.1364	1.1404
2017/06/27	179671	12426	7.4%	120976	-1417	-1.2%	-58695	13843	30.9%	300647	11009	3.8%	1.1336	1.1421
2017/06/20	167245	3018	1.8%	122393	37219	43.7%	-44852	-34201	-43.3%	289638	40237	16.1%	1.1134	1.1197
2017/06/13	164227	-662	-0.4%	85174	-5706	-6.3%	-79053	5044	6.8%	249401	-6368	-2.5%	1.1209	1.1201
2017/06/06	164889	-11337	-6.4%	90880	-12477	-12.1%	-74009	1140	1.6%	255769	-23814	-8.5%	1.1278	1.1196
2017/05/30	176226	1194	0.7%	103357	-6830	-6.2%	-72869	8024	12.4%	279583	-5636	-2.0%	1.1182	1.1282
2017/05/23	175032	10798	6.6%	110187	-16443	-13.0%	-64845	27241	72.4%	285219	-5645	-1.9%	1.1185	1.1172
2017/05/16	164234			126630			-37604			290864			1.1081	1.1204

EURO FX - CHICAGO MERCANTILE EXCHANGE
FUTURES ONLY POSITIONS



	2017/10/10			2017/10/17			2017/10/24			2017/10/31			2017/11/07		
	Long	Short	売り越し	Long	Short	売り越し	Long	Short	売り越し	Long	Short	売り越し	Long	Short	売り越し
JPY	51655	153074	101419	55010	156296	101286	60077	176934	116857	54585	173454	118869	54336	182184	127848
	前週比 枚数増減 (枚)			3355	3222	-133	5067	20638	15571	-5492	-3480	2012	-249	8730	8979
	前週比 枚数増減 (%)			6.5%	2.1%	-0.1%	9.2%	13.2%	15.4%	-9.1%	-2.0%	1.7%	-0.5%	5.0%	7.6%
EUR	195816	97737	-98079	186751	96299	-90452	183539	100035	-83504	173670	101573	-72097	181335	95880	-85455
	前週比 枚数増減 (枚)			-9065	-1438	-7627	-3212	3736	-6948	-9869	1538	-11407	7665	-5693	13358
	前週比 枚数増減 (%)			-4.6%	-1.5%	-7.8%	-1.7%	3.9%	-7.7%	-5.4%	1.5%	-13.7%	4.4%	-5.6%	18.5%
GBP	79610	64102	-15508	72871	67824	-5047	66162	67647	1485	65482	64237	-1245	50403	59601	9198
	前週比 枚数増減 (枚)			-6739	3722	-10461	-6709	-177	-3562	-680	-3410	-240	-15079	-4636	7953
	前週比 枚数増減 (%)			-8.5%	5.8%	-67.5%	-9.2%	-0.3%	-129.4%	-1.0%	-5.0%	-183.8%	-23.0%	-7.2%	-838.8%
AUD	93702	24520	-69182	85763	23963	-61800	85819	28569	-57250	85422	33814	-51608	75144	29707	-45437
	前週比 枚数増減 (枚)			-7939	-557	-7382	56	4606	-4550	-397	5245	-5642	-10278	-4107	-6171
	前週比 枚数増減 (%)			-8.5%	-2.3%	-10.7%	0.1%	19.2%	-7.4%	-0.5%	18.4%	-9.9%	-12.0%	-12.1%	-12.0%
CAD	97068	20676	-76392	94507	19421	-75086	96561	24229	-72332	84309	26470	-57839	75460	24571	-50889
	前週比 枚数増減 (枚)			-2561	-1255	-1306	2054	4808	-2754	-12252	2241	-14493	-8849	-1899	-6950
	前週比 枚数増減 (%)			-2.6%	-6.1%	-1.7%	2.2%	24.8%	-3.7%	-12.7%	9.2%	-20.0%	-10.5%	-7.2%	-12.0%
CHF	18211	22473	4262	22174	27105	4931	22539	34136	11597	21001	41672	20671	19568	44678	25110
	前週比 枚数増減 (枚)			3963	4632	669	365	7031	6666	-1538	7536	9074	-1433	3006	4439
	前週比 枚数増減 (%)			21.8%	20.6%	15.7%	1.6%	25.9%	135.2%	-6.8%	22.1%	78.2%	-6.8%	7.2%	21.5%
NZD	21529	15800	-5729	20423	13446	-6977	20549	19938	-611	21763	27470	5707	18943	30130	11187
	前週比 枚数増減 (枚)			-1106	-2354	1248	126	6492	-6366	1214	7532	5096	-2820	2660	5480
	前週比 枚数増減 (%)			-5.1%	-14.9%	21.8%	0.6%	48.3%	-91.2%	5.9%	37.8%	-1034.0%	-13.0%	9.7%	96.0%
MXN	102473	19724	-82749	98936	27869	-71067	87536	31835	-55701	87220	31974	-55246	88731	31756	-56975
	前週比 枚数増減 (枚)			-3537	8145	-11682	-11400	3966	-15366	-316	139	-455	1511	-218	1729
	前週比 枚数増減 (%)			-3.5%	41.3%	-14.1%	-11.5%	14.2%	-21.6%	-0.4%	0.4%	-0.8%	1.7%	-0.7%	3.1%
Total All 8	660064	418106	-241958	636435	432223	-204212	622782	483323	-139459	593452	500664	-92788	563920	498507	-65413
	前週比 枚数増減 (枚)			-23629	14117	-37746	-13653	51100	-64753	-29330	17341	-46671	-29532	-2157	-27375
	前週比 枚数増減 (%)			-3.6%	3.4%	-15.6%	-2.1%	11.8%	-31.7%	-4.7%	3.6%	-33.5%	-5.0%	-0.4%	-29.5%
Total 7 (MXN除く)	557591	398382	-159209	537499	404354	-133145	535246	451488	-83758	506232	468690	-37542	475189	466751	-8438
	前週比 枚数増減 (枚)			-20092	5972	-26064	-2253	47134	-49387	-29014	17202	-46216	-31043	-1939	-29104
	前週比 枚数増減 (%)			-3.6%	1.5%	-16.4%	-0.4%	11.7%	-37.1%	-5.4%	3.8%	-55.2%	-6.1%	-0.4%	-77.5%

直近5週 CFTC IMM主要7通貨の構成

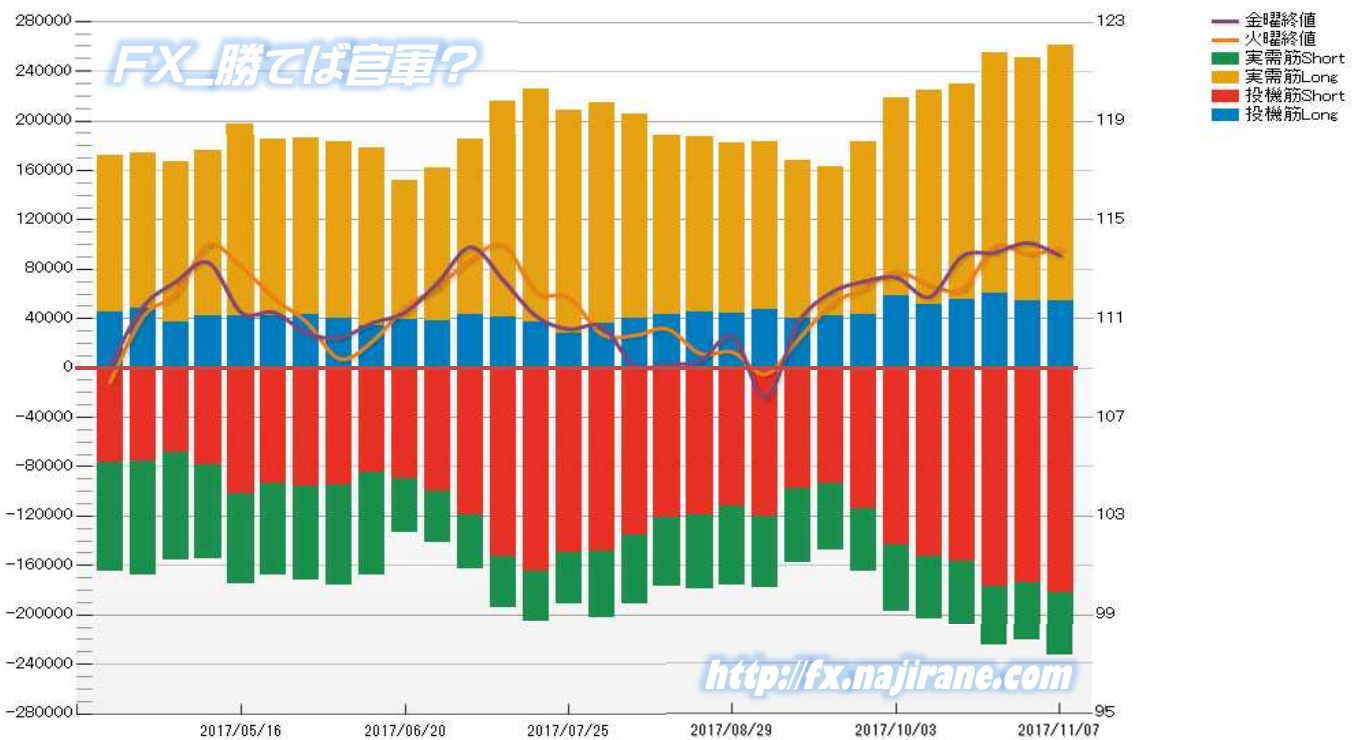


JAPANESE YEN - CHICAGO MERCANTILE EXCHANGE
FUTURES ONLY POSITIONS

Code-097741
2017/11/10 公表値

Date	投機筋集計				実需筋集計				投機筋+実需筋合計				ドル円終値	
	円買い	円売り	売り越し	売買計	円買い	円売り	売り越し	売買計	円買い	円売り	売り越し	売買計	火曜締め	金曜締め
2017/11/07	54336	182184	127848	236520	206955	51547	-155408	258502	261291	233731	-27560	495022	113.83	113.55
2017/10/31	54585	173454	118869	228039	196707	48090	-148617	244797	251292	221544	-29748	472836	113.64	114.07
2017/10/24	60077	176934	116857	237011	195330	48338	-146992	243668	255407	225272	-30135	480679	113.93	113.68
2017/10/17	55010	156296	101286	211306	174720	51833	-122887	226553	229730	208129	-21601	437859	112.20	113.53
2017/10/10	51655	153074	101419	204729	173289	49943	-123346	223232	224944	203017	-21927	427961	112.37	111.88
2017/10/03	58770	143413	84643	202183	160230	53797	-106433	214027	219000	197210	-21790	416210	112.89	112.66
2017/09/26	42963	114310	71347	157273	140482	50047	-90435	190529	183445	164357	-19088	347802	112.24	112.51
2017/09/19	42435	93757	51322	136192	120365	53357	-67008	173722	162800	147114	-15686	309914	111.58	112.06
2017/09/12	40642	97939	57297	138581	127392	59890	-67502	187282	168034	157829	-10205	325863	110.16	110.84
2017/09/05	47285	120230	72945	167515	136437	58205	-78232	194642	183722	178435	-5287	362157	108.75	107.79
2017/08/29	43889	112413	68524	156302	138466	63262	-75204	201728	182355	175675	-6680	358030	109.64	110.27
2017/08/22	45162	119248	74086	164410	142448	59657	-82791	202105	187610	178905	-8705	366515	109.59	109.30
2017/08/15	43308	120800	77492	164108	145227	56054	-89173	201281	185535	176854	-11681	365389	110.58	109.14
2017/08/08	39810	135623	95813	175433	165991	55822	-110169	221813	205801	191445	-14356	397246	110.32	109.10
2017/08/01	36445	148641	112196	185086	178378	53446	-124932	231824	214823	202087	-12736	416910	110.37	110.69
2017/07/25	28018	149507	121489	177525	180207	41743	-138464	221950	208225	191250	-16975	399475	111.87	110.58
2017/07/18	37419	164338	126919	201757	188763	41117	-147646	229880	226182	205455	-20727	431637	112.07	111.10
2017/07/11	40778	152903	112125	193681	174866	41714	-133152	216580	215644	194617	-21027	410261	113.97	112.55
2017/07/03	43648	118684	75036	162332	141824	43641	-98183	185465	185472	162325	-23147	347797	113.40	113.90
2017/06/27	38254	99604	61350	137858	123453	41443	-82010	164896	161707	141047	-20660	302754	112.28	112.47
2017/06/20	39498	89457	49959	128955	112255	44243	-68012	156498	151753	133700	-18053	285453	111.46	111.26
2017/06/13	34160	84713	50553	118873	144233	83337	-60896	227570	178393	168050	-10343	346443	110.08	110.83
2017/06/06	39736	94763	55027	134499	143746	81444	-62302	225190	183482	176207	-7275	359689	109.37	110.23
2017/05/30	43404	95679	52275	139083	143450	76426	-67024	219876	186854	172105	-14749	358959	110.85	110.42
2017/05/23	41920	93576	51656	135496	143304	74467	-68837	217771	185224	168043	-17181	353267	111.82	111.26
2017/05/16	41963	101971	60008	143934	155071	72713	-82358	227784	197034	174684	-22350	371718	113.11	111.25
2017/05/09	42635	78942	36307	121577	133992	76099	-57893	210091	176627	155041	-21586	331668	113.99	113.27
2017/05/02	37519	68002	30483	105521	129521	87402	-42119	216923	167040	155404	-11636	322444	112.02	112.49
2017/04/25	48538	75407	26869	123945	125796	91994	-33802	217790	174334	167401	-6933	341735	111.08	111.48
2017/04/18	45761	76224	30463	121985	126595	88467	-38128	215062	172356	164691	-7665	337047	108.44	109.11

JAPANESE YEN - CHICAGO MERCANTILE EXCHANGE
FUTURES ONLY POSITIONS Code-097741

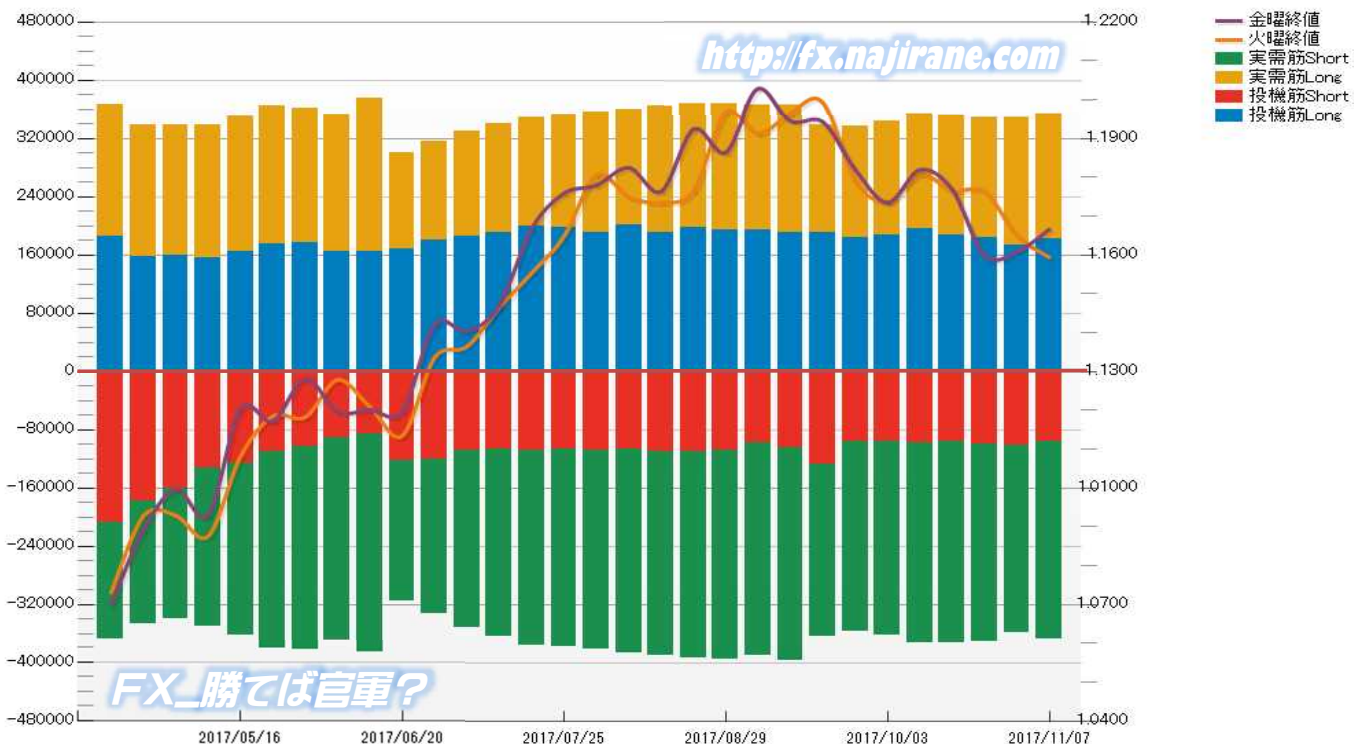


EURO FX - CHICAGO MERCANTILE EXCHANGE
FUTURES ONLY POSITIONS

Code-099741
2017/11/10 公表値

Date	投機筋集計				実需筋集計				投機筋+実需筋合計				ユーロドル終値	
	EUR買い	EUR売り	売り越し	売買計	EUR買い	EUR売り	売り越し	売買計	EUR買い	EUR売り	売り越し	売買計	火曜締め	金曜締め
2017/11/07	181335	95880	-85455	277215	173294	272122	98828	445416	354629	368002	13373	722631	1.1593	1.1666
2017/10/31	173670	101573	-72097	275243	174510	257642	83132	432152	348180	359215	11035	707395	1.1650	1.1608
2017/10/24	183539	100035	-83504	283574	165585	271183	105598	436768	349124	371218	22094	720342	1.1764	1.1598
2017/10/17	186751	96299	-90452	283050	165127	276217	111090	441344	351878	372516	20638	724394	1.1766	1.1768
2017/10/10	195816	97737	-98079	293553	158660	275104	116444	433764	354476	372841	18365	727317	1.1808	1.1819
2017/10/03	187053	96220	-90833	283273	157203	266511	109308	423714	344256	362731	18475	706987	1.1737	1.1735
2017/09/26	183679	95512	-88167	279191	152592	261208	108616	413800	336271	356720	20449	692991	1.1791	1.1820
2017/09/19	190025	127272	-62753	317297	149288	236626	87338	385914	339313	363898	24585	703211	1.1995	1.1943
2017/09/12	191102	105044	-86058	296146	175600	291785	116185	467385	366702	396829	30127	763531	1.1965	1.1945
2017/09/05	194976	98667	-96309	293643	171223	291891	120668	463114	366199	390558	24359	756757	1.1914	1.2028
2017/08/29	194331	107812	-86519	302143	173410	287170	113760	460580	367741	394982	27241	762723	1.1968	1.1865
2017/08/22	197818	109842	-87976	307660	169989	284515	114526	454504	367807	394357	26550	762164	1.1765	1.1924
2017/08/15	190336	111069	-79267	301405	174177	278546	104369	452723	364513	389615	25102	754128	1.1735	1.1764
2017/08/08	201231	107546	-93685	308777	157833	279623	121790	437456	359064	387169	28105	746233	1.1749	1.1825
2017/08/01	191477	108840	-82637	300317	164304	272865	108561	437169	355781	381705	25924	737486	1.1806	1.1780
2017/07/25	197656	106814	-90842	304470	155560	271095	115535	426655	353216	377909	24693	731125	1.1648	1.1759
2017/07/18	199540	108219	-91321	307759	150114	268566	118452	418680	349654	376785	27131	726439	1.1554	1.1668
2017/07/11	190267	106479	-83788	296746	150147	258152	108005	408299	340414	364631	24217	705045	1.1465	1.1470
2017/07/03	185925	108461	-77464	294386	144260	244301	100041	388561	330185	352762	22577	682947	1.1364	1.1404
2017/06/27	179671	120976	-58695	300647	136134	211639	75505	347773	315805	332615	16810	648420	1.1336	1.1421
2017/06/20	167245	122393	-44852	289638	132839	192994	60155	325833	300084	315387	15303	615471	1.1134	1.1197
2017/06/13	164227	85174	-79053	249401	211353	301281	89928	512634	375580	386455	10875	762035	1.1209	1.1201
2017/06/06	164889	90880	-74009	255769	188042	279047	91005	467089	352931	369927	16996	722858	1.1278	1.1196
2017/05/30	176226	103357	-72869	279583	185792	279432	93640	465224	362018	382789	20771	744807	1.1182	1.1282
2017/05/23	175032	110187	-64845	285219	190524	272094	81570	462618	365556	382281	16725	747837	1.1185	1.1172
2017/05/16	164234	126630	-37604	290864	186406	236357	49951	422763	350640	362987	12347	713627	1.1081	1.1204
2017/05/09	155581	133182	-22399	288763	183860	217059	33199	400919	339441	350241	10800	689682	1.0876	1.0930
2017/05/02	159418	161071	1653	320489	179781	178953	-828	358734	339199	340024	825	679223	1.0929	1.0996
2017/04/25	157831	178726	20895	336557	181520	167731	-13789	349251	339351	346457	7106	685808	1.0928	1.0892
2017/04/18	185786	207435	21649	393221	179950	159602	-20348	339552	365736	367037	1301	732773	1.0730	1.0699

EURO FX - CHICAGO MERCANTILE EXCHANGE
FUTURES ONLY POSITIONS Code-099741



過去5日及び過去4週の4本値と各種ピボット

2017/11/06 ~ 2017/11/10

USD/JPY										Demark						Pivot						Fibonacci Zone								
当日のOHLCLから計算される翌日の										TD Range Projection						TD pivot points														
日足	Open	High	Low	Close	値幅/日	引け形態	真の高値	真の安値	予想高値	予想安値	予想高値	予想安値	StopLoss	Support	Pivot	Resistance	StopLoss	3-days AVG	Support Zone 2	Support Zone 1	BP	Resistance Zone 1	Resistance Zone 2							
													LBOP	S2	S1	PP	R1	R2	HBOP											
2017/11/06	114.12	114.74	113.70	113.79	104p	陰線引け	-	-	-	-	-	-	112.38	113.04	113.41	114.07	114.45	115.11	115.48											
2017/11/07	113.79	114.34	113.71	113.83	63p	陽線引け	114.34	113.71	114.40	113.77	114.40	113.77	112.95	113.33	113.58	113.96	114.21	114.59	114.83											
2017/11/08	113.82	113.93	113.40	113.87	52p	陽線引け	113.93	113.40	114.16	113.63	114.16	113.63	113.01	113.21	113.54	113.73	114.06	114.26	114.58	113.92	Bear	113.01	~ 113.21	113.41	~ 113.47	113.73	113.99	~ 114.06	114.26	~ 114.46
2017/11/09	113.87	114.07	113.09	113.47	97p	陰線引け	114.07	113.09	113.77	112.80	113.77	112.80	112.05	112.57	113.02	113.54	114.00	114.52	114.97	113.75	Bear	112.20	~ 112.57	112.94	~ 113.06	113.54	114.03	~ 114.15	114.52	~ 114.89
2017/11/10	113.47	113.64	113.23	113.55	41p	陰線引け	113.64	113.23	113.80	113.39	113.80	113.39	112.89	113.06	113.30	113.47	113.71	113.88	114.12	113.58	Bear	112.90	~ 113.06	113.21	~ 113.26	113.47	113.67	~ 113.72	113.88	~ 114.04
2017/10/16 ~ 2017/10/20	111.90	113.57	111.66	113.53	191p	陽線引け	-	-	-	-	-	-	110.36	111.01	112.27	112.92	114.18	114.83	116.10											
2017/10/23 ~ 2017/10/27	113.84	114.45	113.25	113.68	120p	陰線引け	114.45	111.66	114.06	111.27	114.06	112.86	111.93	112.59	113.13	113.79	114.33	114.99	115.53											
2017/10/30 ~ 2017/11/03	113.74	114.43	112.96	114.07	147p	陽線引け	114.43	112.96	114.98	113.51	114.98	113.51	111.74	112.35	113.21	113.82	114.68	115.28	116.14	113.51	Bull	111.79	~ 112.35	112.91	~ 113.08	113.82	114.55	~ 114.72	115.28	~ 115.85
2017/11/06 ~ 2017/11/10	114.12	114.74	113.09	113.55	164p	陰線引け	114.74	113.09	114.14	112.50	114.14	112.50	111.21	112.15	112.85	113.79	114.49	115.43	116.13	113.80	Bear	111.52	~ 112.15	112.78	~ 112.97	113.79	114.61	~ 114.81	115.43	~ 116.06

EUR/JPY										Demark						Pivot						Fibonacci Zone								
当日のOHLCLから計算される翌日の										TD Range Projection						TD pivot points														
日足	Open	High	Low	Close	値幅/日	引け形態	真の高値	真の安値	予想高値	予想安値	予想高値	予想安値	StopLoss	Support	Pivot	Resistance	StopLoss	3-days AVG	Support Zone 2	Support Zone 1	BP	Resistance Zone 1	Resistance Zone 2							
													LBOP	S2	S1	PP	R1	R2	HBOP											
2017/11/06	132.54	133.12	132.01	132.11	112p	陰線引け	-	-	-	-	-	-	130.58	131.29	131.70	132.41	132.82	133.53	133.93											
2017/11/07	132.11	132.42	131.84	131.96	58p	陽線引け	132.42	131.84	132.19	131.61	132.19	131.61	131.15	131.50	131.73	132.07	132.31	132.65	132.88											
2017/11/08	131.96	132.17	131.41	132.01	76p	陽線引け	132.17	131.41	132.47	131.71	132.47	131.71	130.79	131.10	131.56	131.86	132.32	132.63	133.08	132.12	Bear	130.81	~ 131.10	131.39	~ 131.48	131.86	132.25	~ 132.34	132.63	~ 132.92
2017/11/09	132.02	132.26	131.49	132.12	77p	陽線引け	132.26	131.49	132.57	131.80	132.57	131.80	130.89	131.19	131.65	131.96	132.42	132.72	133.19	131.96	Bear	130.89	~ 131.19	131.48	~ 131.57	131.96	132.34	~ 132.43	132.72	~ 133.02
2017/11/10	132.12	132.55	131.95	132.46	60p	陽線引け	132.55	131.95	132.81	132.21	132.81	132.21	131.49	131.72	132.09	132.32	132.69	132.92	133.29	132.05	Bull	131.50	~ 131.72	131.95	~ 132.02	132.32	132.62	~ 132.69	132.92	~ 133.15
2017/10/16 ~ 2017/10/20	132.16	133.96	131.68	133.61	228p	陽線引け	-	-	-	-	-	-	129.92	130.80	132.20	133.08	134.48	135.36	136.77											
2017/10/23 ~ 2017/10/27	134.01	134.50	131.75	131.85	274p	陰線引け	134.50	131.68	133.17	130.35	133.17	130.43	128.16	129.95	130.90	132.70	133.64	135.44	136.39											
2017/10/30 ~ 2017/11/03	131.89	133.14	131.46	132.41	169p	陽線引け	133.14	131.46	133.62	131.93	133.62	131.93	129.85	130.65	131.53	132.34	133.22	134.02	134.90	132.71	Bear	130.01	~ 130.65	131.30	~ 131.49	132.34	133.18	~ 133.38	134.02	~ 134.67
2017/11/06 ~ 2017/11/10	132.54	133.12	131.41	132.46	172p	陰線引け	133.12	131.41	132.79	131.08	132.79	131.08	129.82	130.61	131.54	132.33	133.25	134.04	134.97	132.46	Bear	129.96	~ 130.61	131.27	~ 131.47	132.33	133.19	~ 133.39	134.04	~ 134.70

EUR/USD										Demark						Pivot						Fibonacci Zone								
当日のOHLCLから計算される翌日の										TD Range Projection						TD pivot points														
日足	Open	High	Low	Close	値幅/日	引け形態	真の高値	真の安値	予想高値	予想安値	予想高値	予想安値	StopLoss	Support	Pivot	Resistance	StopLoss	3-days AVG	Support Zone 2	Support Zone 1	BP	Resistance Zone 1	Resistance Zone 2							
													LBOP	S2	S1	PP	R1	R2	HBOP											
2017/11/06	1.1614	1.1624	1.1580	1.1610	44p	陰線引け	-	-	-	-	-	-	1.1542	1.1561	1.1586	1.1605	1.1629	1.1649	1.1673											
2017/11/07	1.1610	1.1616	1.1555	1.1593	61p	陽線引け	1.1616	1.1555	1.1604	1.1544	1.1604	1.1544	1.1499	1.1527	1.1560	1.1588	1.1621	1.1649	1.1682											
2017/11/08	1.1593	1.1611	1.1580	1.1594	31p	陽線引け	1.1611	1.1580	1.1618	1.1587	1.1618	1.1587	1.1548	1.1564	1.1579	1.1595	1.1610	1.1626	1.1640	1.1596	Bear	1.1552	~ 1.1564	1.1576	~ 1.1579	1.1595	1.1610	~ 1.1614	1.1626	~ 1.1637
2017/11/09	1.1593	1.1655	1.1586	1.1644	68p	陽線引け	1.1655	1.1586	1.1683	1.1615	1.1683	1.1615	1.1533	1.1560	1.1602	1.1628	1.1670	1.1696	1.1738	1.1604	Bull	1.1534	~ 1.1560	1.1586	~ 1.1594	1.1628	1.1662	~ 1.1670	1.1696	~ 1.1723
2017/11/10	1.1644	1.1678	1.1623	1.1666	55p	陽線引け	1.1678	1.1623	1.1699	1.1645	1.1699	1.1645	1.1579	1.1601	1.1633	1.1656	1.1688	1.1710	1.1743	1.1626	Bull	1.1580	~ 1.1601	1.1622	~ 1.1628	1.1656	1.1683	~ 1.1689	1.1710	~ 1.1731
2017/10/16 ~ 2017/10/20	1.1811	1.1858	1.1731	1.1768	127p	陰線引け	-	-	-	-	-	-	1.1586	1.1658	1.1713	1.1786	1.1840	1.1913	1.1968											
2017/10/23 ~ 2017/10/27	1.1772	1.1837	1.1575	1.1598	262p	陰線引け	1.1837	1.1598	1.1717	1.1479	1.1717	1.1455	1.1241	1.1408	1.1503	1.1670	1.1765	1.1932	1.2027											
2017/10/30 ~ 2017/11/03	1.1595	1.1690	1.1595	1.1608	95p	陽線引け	1.1690	1.1595	1.1697	1.1602	1.1697	1.1602	1.1477	1.1536	1.1572	1.1631	1.1667	1.1726	1.1762	1.1696	Bear	1.1500	~ 1.1536	1.1572	~ 1.1584	1.1631	1.1679	~ 1.1690	1.1726	~ 1.1763
2017/11/06 ~ 2017/11/10	1.1614	1.1678	1.1555	1.1666	123p	陰線引け	1.1678	1.1555	1.1734	1.1610	1.1734	1.1610	1.1464	1.1510	1.1588	1.1633	1.1711	1.1756	1.1834	1.1645	Bear	1.1462	~ 1.1510	1.1557	~ 1.1571	1.1633	1.1694	~ 1.1709	1.1756	~ 1.1803

GBP/JPY										Demark						Pivot						Fibonacci Zone								
当日のOHLCLから計算される翌日の										TD Range Projection						TD pivot points														
日足	Open	High	Low	Close	値幅/日	引け形態	真の高値	真の安値	予想高値	予想安値	予想高値	予想安値	StopLoss	Support	Pivot	Resistance	StopLoss	3-days AVG	Support Zone 2	Support Zone 1	BP	Resistance Zone 1	Resistance Zone 2							
													LBOP	S2	S1	PP	R1	R2	HBOP											
2017/11/06	149.24	149.90	149.24	149.88	67p	陽線引け	-	-	-	-	-	-	148.77	149.00	149.44	149.67	150.11	150.34	150.78											
2017/11/07	149.88	150.32	149.66	149.92	66p	陽線引け	150.32	149.66	150.45	149.79	150.45	149.79	148.95	149.30	149.61	149.97	150.27	150.63	150.94											
2017/11/08	149.91	149.95	148.56	149.33	139p	陰線引け	149.95	148.56	149.64	148.25	149.64	148.25	147.22	147.89	148.61	149.28	150.00	150.67	151.39	149.64	Bear	147.36	~ 147.89	148.42	~ 148.59	149.28	149.97	~ 150.14	150.67	~ 151.20
2017/11/09	149.33	149.70	148.45	149.16	125p	陰線引け	149.70	148.45	149.43	148.18	149.43	148.18	147.26	147.85	148.51	149.10	149.75	150.35	151.00	149.45	Bear	147.38	~ 147.85	148.33	~ 148.48	149.10	149.72	~ 149.87	150.35	~ 150.82
2017/11/10	149.15	149.99	148.85	149.85	115p	陽線引け	149.99	148.85	150.49	149.35	150.49	149.35	147.98	148.41	149.13	149.56	150.28	150.71	151.42	149.31	Bull	147.98	~ 148.41	148.85	~ 148.99	149.56	150.13	~ 150.27	150.71	~ 151.14
2017/10/16 ~ 2017/10/20	148.78	149.83	147.79	149.70	205p	陽線引け	-	-	-	-	-	-	146.33	147.06	148.38	149.11	150.43	151.15	152.47											
2017/10/23 ~ 2017/10/27	150.11	151.40	149.00	149.21	239p	陰線引け	151.40	147.79	150.30	146.69	150.30	147.91	145.95	147.47	148.34	149.87	150.73	152.26	153.13											
2017/10/30 ~ 2017/11/03	149.27	151.93	148.69	149.16	325p	陰線引け	151.93	148.69	150.55	147.30	150.55	147.30	144.67	146.68	147.92															

IMM扱い8通貨/ダウ/日経/金/オイル/主要クロス円の過去5日及び過去5週の4本値

AUDUSD					CADUSD					CHFUSD				
Date	Open	High	Low	Close	Date	Open	High	Low	Close	Date	Open	High	Low	Close
2017/11/10	0.7676	0.7695	0.7654	0.7662	2017/11/10	0.7884	0.7895	0.7877	0.7888	2017/11/10	1.0059	1.0075	1.0032	1.0042
2017/11/09	0.7678	0.7694	0.7650	0.7676	2017/11/09	0.7855	0.7894	0.7849	0.7884	2017/11/09	0.9999	1.0078	0.9982	1.0059
2017/11/08	0.7650	0.7685	0.7645	0.7678	2017/11/08	0.7832	0.7864	0.7828	0.7856	2017/11/08	1.0004	1.0019	0.9993	0.9999
2017/11/07	0.7686	0.7700	0.7627	0.7650	2017/11/07	0.7867	0.7868	0.7801	0.7832	2017/11/07	1.0023	1.0027	0.9981	1.0005
2017/11/06	0.7651	0.7693	0.7639	0.7686	2017/11/06	0.7834	0.7872	0.7823	0.7867	2017/11/06	0.9996	1.0027	0.9971	1.0023

CNYUSD					EURUSD					GBPUSD				
Date	Open	High	Low	Close	Date	Open	High	Low	Close	Date	Open	High	Low	Close
2017/11/10	0.1505	0.1506	0.1503	0.1504	2017/11/10	1.1644	1.1678	1.1623	1.1666	2017/11/10	1.3145	1.3230	1.3113	1.3197
2017/11/09	0.1508	0.1509	0.1505	0.1505	2017/11/09	1.1593	1.1655	1.1586	1.1644	2017/11/09	1.3113	1.3166	1.3086	1.3145
2017/11/08	0.1507	0.1507	0.1505	0.1507	2017/11/08	1.1593	1.1611	1.1580	1.1594	2017/11/08	1.3170	1.3176	1.3087	1.3115
2017/11/07	0.1510	0.1511	0.1507	0.1507	2017/11/07	1.1610	1.1616	1.1555	1.1593	2017/11/07	1.3172	1.3177	1.3110	1.3171
2017/11/06	0.1507	0.1508	0.1505	0.1507	2017/11/06	1.1614	1.1624	1.1580	1.1610	2017/11/06	1.3077	1.3175	1.3059	1.3172

JPYUSD					MXNUSD					NZDUSD				
Date	Open	High	Low	Close	Date	Open	High	Low	Close	Date	Open	High	Low	Close
2017/11/10	0.8813	0.8832	0.8800	0.8807	2017/11/10	5.2512	5.2601	5.2301	5.2337	2017/11/10	0.6933	0.6958	0.6921	0.6930
2017/11/09	0.8782	0.8842	0.8767	0.8813	2017/11/09	5.2346	5.2543	5.2177	5.2512	2017/11/09	0.6967	0.6980	0.6932	0.6933
2017/11/08	0.8786	0.8818	0.8778	0.8782	2017/11/08	5.2186	5.2498	5.2186	5.2346	2017/11/08	0.6912	0.6974	0.6898	0.6967
2017/11/07	0.8789	0.8794	0.8746	0.8785	2017/11/07	5.2548	5.2566	5.2055	5.2186	2017/11/07	0.6942	0.6953	0.6891	0.6912
2017/11/06	0.8762	0.8795	0.8716	0.8788	2017/11/06	5.2117	5.2585	5.2089	5.2548	2017/11/06	0.6911	0.6958	0.6875	0.6942

Nikkei 225 - Japan (NIX)					出来高	
Date	Open	High	Low	Close	(ドル建て終値)	出来高
2017/11/10	22580.70	22724.39	22511.93	22681.42	198.72	0 1890463900
2017/11/09	22989.44	23382.15	22522.83	22868.71	200.36	1653871488 2747758500
2017/11/08	22849.91	22922.80	22759.07	22913.82	200.75	1033253376 1868224300
2017/11/07	22518.75	22953.18	22512.91	22937.60	200.96	1110909952 1896653100
2017/11/06	22612.96	22644.68	22435.34	22548.35	197.55	1153798144 1938162400
週4本値	22612.96	23382.15	22435.34	22681.42	198.72	(N225銘柄計) (東証一部全体計)

XAUUSD				
Date	Open	High	Low	Close
2017/11/10	1285.31	1287.09	1273.58	1275.90
2017/11/09	1281.91	1288.33	1280.13	1285.83
2017/11/08	1275.89	1287.19	1275.89	1281.55
2017/11/07	1281.76	1281.97	1272.11	1274.69
2017/11/06	1270.24	1283.01	1266.27	1281.38
週4本値	1270.24	1288.33	1266.27	1275.90

Dow Jones Industrial - USA (DJIA)					出来高	
Date	Open	High	Low	Close	出来高	出来高
2017/11/10	23432.71	23452.20	23392.96	23422.21	347025017	
2017/11/09	23492.09	23516.74	23310.02	23461.94	303742998	
2017/11/08	23542.60	23575.00	23510.56	23563.36	261270415	
2017/11/07	23574.03	23602.12	23484.19	23557.23	280549354	
2017/11/06	23533.96	23574.86	23520.75	23548.42	318649715	
週4本値	23533.96	23602.12	23310.02	23422.21	347025017	

Historical Data by **Stooq**
 Historical Data by **MarketNewsline**
 Arrangement by **FX_勝てば官軍?**

Crude Light Oil					出来高	
Date	Open	High	Low	Close	出来高	出来高
2017/11/10	57.02	57.35	56.55	56.74	1105729	
2017/11/09	56.85	57.53	56.69	57.17	1304422	
2017/11/08	56.96	57.92	56.41	56.81	1891315	
2017/11/07	57.27	57.69	56.83	57.20	1502309	
2017/11/06	55.97	57.61	55.66	57.35	1658990	
週4本値	55.97	57.92	55.66	56.74		

USDJPY					EURJPY					GBPJPY				
日付	始値	高値	安値	終値	日付	始値	高値	安値	終値	日付	始値	高値	安値	終値
2017/11/10	113.47	113.64	113.23	113.55	2017/11/10	132.12	132.55	131.95	132.46	2017/11/10	149.15	149.99	148.85	149.85
2017/11/09	113.87	114.07	113.09	113.47	2017/11/09	132.02	132.26	131.49	132.12	2017/11/09	149.33	149.70	148.45	149.16
2017/11/08	113.82	113.93	113.40	113.87	2017/11/08	131.96	132.17	131.41	132.01	2017/11/08	149.91	149.95	148.56	149.33
2017/11/07	113.79	114.34	113.71	113.83	2017/11/07	132.11	132.42	131.84	131.96	2017/11/07	149.88	150.32	149.66	149.92
2017/11/06	114.12	114.74	113.70	113.79	2017/11/06	132.54	133.12	132.01	132.11	2017/11/06	149.24	149.90	149.24	149.88

USDJPY Weekly					EURJPY Weekly					GBPJPY Weekly				
日付	始値	高値	安値	終値	日付	始値	高値	安値	終値	日付	始値	高値	安値	終値
2017/11/10	114.12	114.74	113.09	113.55	2017/11/10	132.54	133.12	131.41	132.46	2017/11/10	149.24	150.32	148.45	149.85
2017/11/03	113.74	114.43	112.96	114.07	2017/11/03	131.89	133.14	131.46	132.41	2017/11/03	149.27	151.93	148.69	149.16
2017/10/27	113.84	114.45	113.25	113.68	2017/10/27	134.01	134.50	131.75	131.85	2017/10/27	150.11	151.40	149.00	149.21
2017/10/20	111.90	113.57	111.66	113.53	2017/10/20	132.16	133.96	131.68	133.61	2017/10/20	148.78	149.83	147.79	149.70
2017/10/13	112.68	112.83	111.69	111.88	2017/10/13	132.25	133.50	131.87	132.24	2017/10/13	147.40	149.27	146.96	148.69

先週のIMM取り扱い対ドル8通貨チャート

※ 赤点線は週最高値/青天線は週最低値、BB中心線はSMA21

2017/11/06 ~ 2017/11/10

Chart by OANDA Japan MetaTrader4



