

JAPANESE YEN - CHICAGO MERCANTILE EXCHANGE  
FUTURES ONLY POSITIONS

(過去26週)

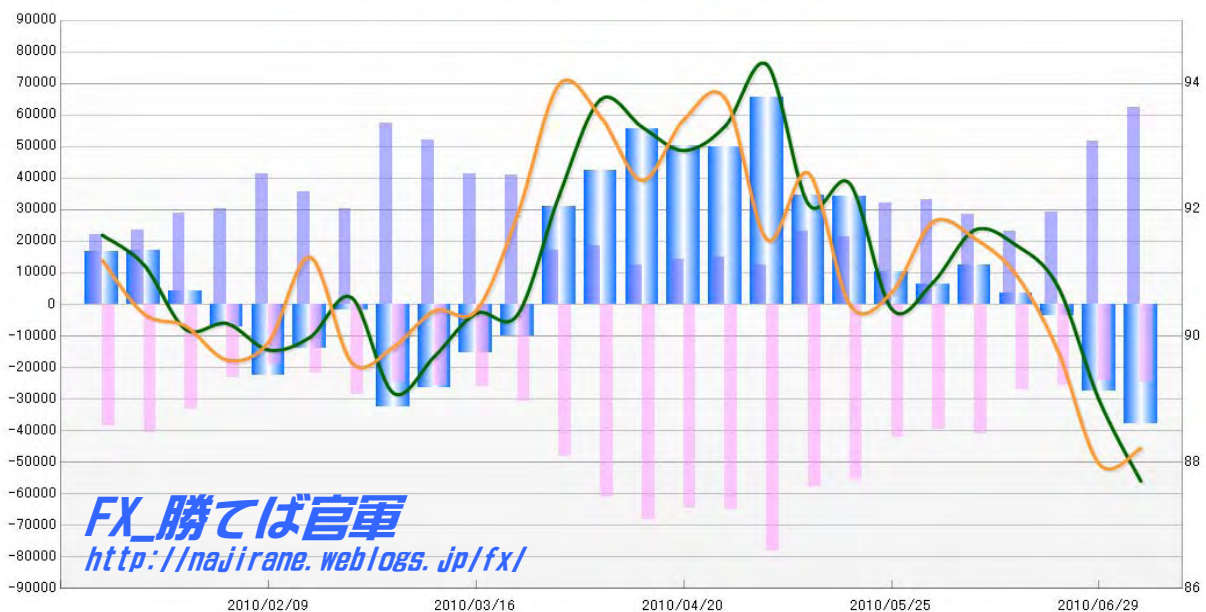
Code-097741

2010/07/09 公表値

Report_Date	Non Commercial Positions					火曜締めドル円			週末締めドル円レート		
	Long	増減	Short	増減	売り越し	Close	HLCC/4	前週比	Close	HLCC/4	前週比
2010/07/06	62476	20.8%	24550	1.1%	-37926	87.55	87.70	-1.4%	88.58	88.22	0.3%
2010/06/29	51721	76.8%	24294	-5.2%	-27427	88.54	88.98	-2.0%	87.74	87.97	-2.0%
2010/06/22	29257	25.5%	25627	-5.0%	-3630	90.54	90.79	-0.7%	89.21	89.77	-1.3%
2010/06/15	23304	-18.3%	26984	-34.3%	3680	91.41	91.44	-0.3%	90.67	90.97	-0.6%
2010/06/08	28519	-14.1%	41066	3.4%	12547	91.51	91.68	0.9%	91.64	91.55	-0.3%
2010/06/01	33215	3.8%	39699	-6.0%	6484	91.00	90.85	0.5%	91.91	91.81	1.2%
2010/05/25	31994	49.6%	42232	-24.2%	10238	90.30	90.43	-2.1%	91.05	90.69	0.2%
2010/05/18	21393	-8.0%	55682	-3.9%	34289	92.12	92.41	0.3%	90.00	90.49	-2.3%
2010/05/11	23265	87.2%	57934	-25.8%	34669	92.68	92.09	-2.3%	92.46	92.58	1.2%
2010/05/04	12430	-17.2%	78042	20.4%	65612	94.62	94.30	1.0%	91.56	91.53	-2.4%
2010/04/27	15018	5.7%	64795	0.4%	49777	93.12	93.33	0.4%	93.81	93.76	0.3%
2010/04/20	14211	13.0%	64549	-5.5%	50338	93.23	92.94	-0.4%	93.91	93.43	1.0%
2010/04/13	12573	-32.4%	68319	12.2%	55746	93.21	93.31	-0.5%	92.15	92.47	-1.1%
2010/04/06	18596	8.3%	60901	26.8%	42305	93.75	93.75	1.7%	93.15	93.47	-0.6%
2010/03/30	17174	-58.1%	48040	55.6%	30866	92.78	92.23	2.1%	94.58	93.99	2.2%
2010/03/23	41030	-0.6%	30869	18.4%	-10161	90.41	90.34	0.0%	92.47	91.93	1.7%
2010/03/16	41278	-20.5%	26081	1.8%	-15197	90.27	90.36	0.8%	90.53	90.40	0.0%
2010/03/09	51919	-9.4%	25631	3.4%	-26288	89.96	89.68	0.7%	90.46	90.40	0.7%
2010/03/02	57332	88.4%	24780	-13.7%	-32552	88.74	89.10	-1.7%	90.29	89.82	0.3%
2010/02/23	30432	-14.7%	28715	31.8%	-1717	90.20	90.61	0.7%	88.85	89.58	-1.8%
2010/02/16	35691	-13.7%	21779	14.9%	-13912	90.10	89.98	0.2%	91.59	91.25	1.5%
2010/02/09	41352	37.0%	18956	-17.7%	-22396	89.65	89.78	-0.5%	90.02	89.90	0.3%
2010/02/02	30177	4.7%	23042	-30.5%	-7135	90.38	90.20	0.1%	89.33	89.62	-0.6%
2010/01/26	28821	21.5%	33168	-18.7%	4347	89.62	90.11	-1.1%	90.30	90.16	-0.2%
2010/01/19	23718	8.0%	40814	5.5%	17096	91.10	91.13	-0.5%	89.89	90.35	-0.9%
2010/01/12	21951		38695		16744	90.95	91.60		90.78	91.20	

JAPANESE YEN - CHICAGO MERCANTILE EXCHANGE  
FUTURES ONLY POSITIONS

— 金曜締め週Pivot — 火曜締め週Pivot Short枚数 Long枚数 売り越し枚数



**EURO FX - CHICAGO MERCANTILE EXCHANGE  
FUTURES ONLY POSITIONS**

(過去26週)

Code-099741  
2010/07/09 公表値

Report_Date	Non Commercial Positions					火曜締めユーロドルレート			週末締めユーロドルレート		
	Long	増減	Short	増減	売り越し	Close	HLCC/4	前週比	Close	HLCC/4	前週比
2010/07/06	56316	29.9%	95225	-18.6%	38909	1.2623	1.2518	2.4%	1.2634	1.2617	1.2%
2010/06/29	43357	5.7%	117027	4.5%	73670	1.2179	1.2226	-0.7%	1.2560	1.2471	0.9%
2010/06/22	41013	-17.2%	111987	0.1%	70974	1.2266	1.2310	0.7%	1.2374	1.2356	0.3%
2010/06/15	49526	7.8%	111886	-29.1%	62360	1.2323	1.2229	1.6%	1.2384	1.2324	2.2%
2010/06/08	45938	2.1%	157883	14.1%	111945	1.1972	1.2036	-1.8%	1.2110	1.2062	0.0%
2010/06/01	45006	-1.4%	138331	-9.2%	93325	1.2225	1.2253	-1.1%	1.1973	1.2063	-2.0%
2010/05/25	45630	-16.1%	152366	-5.7%	106736	1.2365	1.2386	0.6%	1.2267	1.2311	-1.4%
2010/05/18	54411	37.5%	161554	5.3%	107143	1.2180	1.2315	-3.3%	1.2570	1.2489	-0.4%
2010/05/11	39584	7.9%	153474	9.6%	113890	1.2653	1.2730	-2.6%	1.2360	1.2541	-2.4%
2010/05/04	36675	6.4%	140077	13.4%	103402	1.2980	1.3069	-1.2%	1.2759	1.2845	-3.3%
2010/04/27	34462	2.5%	123475	17.6%	89013	1.3163	1.3232	-1.9%	1.3295	1.3279	-0.7%
2010/04/20	33614	-9.5%	105038	13.4%	71424	1.3436	1.3491	-0.4%	1.3383	1.3372	-1.2%
2010/04/13	37157	-4.8%	92621	-12.8%	55464	1.3606	1.3545	0.8%	1.3496	1.3538	0.6%
2010/04/06	39036	10.9%	106259	-11.8%	67223	1.3398	1.3435	0.2%	1.3496	1.3452	-0.3%
2010/03/30	35205	-11.9%	120531	4.9%	85326	1.3411	1.3407	-1.2%	1.3502	1.3494	0.6%
2010/03/23	39953	-4.4%	114870	30.3%	74917	1.3498	1.3569	-1.1%	1.3410	1.3414	-1.3%
2010/03/16	41800	28.3%	88141	-17.7%	46341	1.3769	1.3719	0.8%	1.3531	1.3595	-0.9%
2010/03/09	32589	-9.2%	107140	4.4%	74551	1.3600	1.3616	0.3%	1.3761	1.3713	0.8%
2010/03/02	35894	9.7%	102664	-1.6%	66770	1.3604	1.3581	0.2%	1.3621	1.3603	0.0%
2010/02/23	32728	-5.0%	104351	11.2%	71623	1.3505	1.3560	-1.2%	1.3625	1.3598	-0.1%
2010/02/16	34459	-1.2%	93881	2.0%	59422	1.3768	1.3720	-0.6%	1.3615	1.3615	-0.3%
2010/02/09	34867	11.7%	92019	22.8%	57152	1.3789	1.3797	-1.2%	1.3615	1.3650	-0.6%
2010/02/02	31207	-5.7%	74948	3.2%	43741	1.3961	1.3967	-1.1%	1.3662	1.3733	-1.5%
2010/01/26	33106	-3.2%	72645	22.2%	39539	1.4073	1.4117	-1.7%	1.3862	1.3945	-1.6%
2010/01/19	34186	-5.5%	59468	9.9%	25282	1.4298	1.4357	-0.7%	1.4137	1.4178	-1.7%
2010/01/12	36186		54103		17917	1.4494	1.4452		1.4382	1.4420	

**EURO FX - CHICAGO MERCANTILE EXCHANGE  
FUTURES ONLY POSITIONS**

— 金曜締め週Pivot — 火曜締め週Pivot Short枚数 Lone枚数 売り越し枚数

