

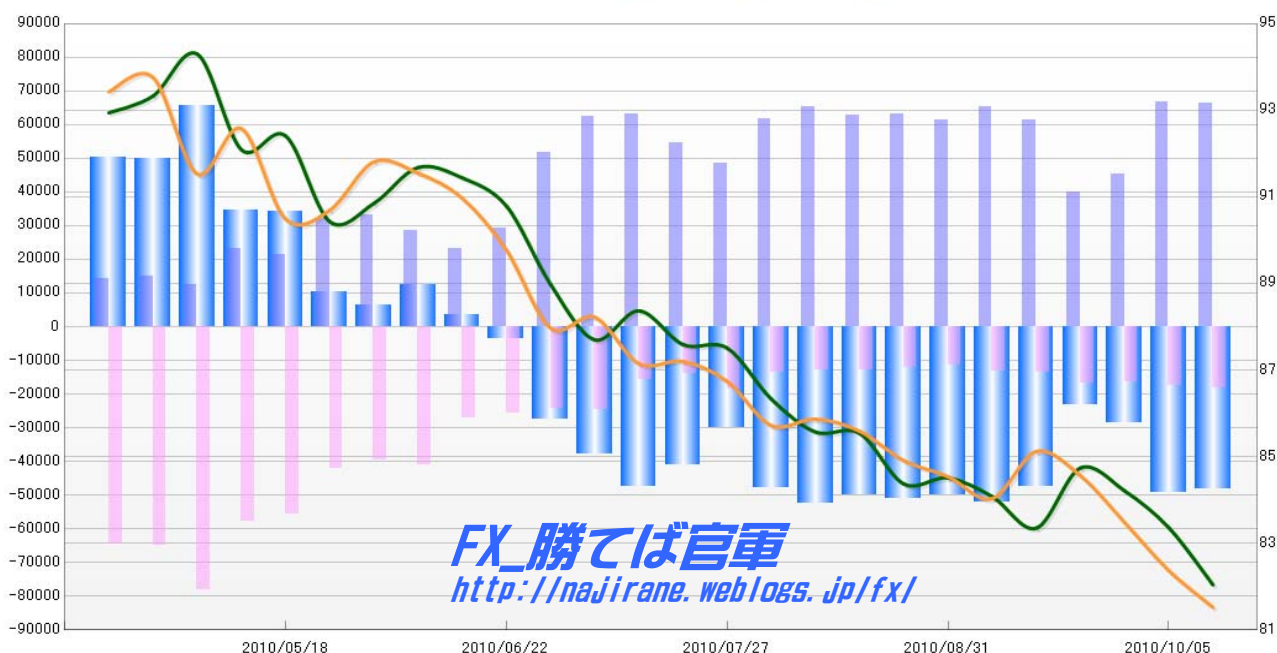
**JAPANESE YEN - CHICAGO MERCANTILE EXCHANGE  
FUTURES ONLY POSITIONS**

Code-097741  
(過去26週) 2010/10/15 公表値

| Report_Date | Non Commercial Positions |        |       |        |        |         | 火曜締めドル円 |        |       | 週末締めドル円レート |        |       |
|-------------|--------------------------|--------|-------|--------|--------|---------|---------|--------|-------|------------|--------|-------|
|             | Long                     | 増減     | Short | 増減     | 売り越し   | 増減      | Close   | HLCC/4 | 前週比   | Close      | HLCC/4 | 前週比   |
| 2010/10/12  | 66463                    | -0.6%  | 18178 | 2.9%   | -48285 | -1.9%   | 81.76   | 82.04  | -1.6% | 81.43      | 81.52  | -1.0% |
| 2010/10/05  | 66866                    | 48.1%  | 17660 | 7.2%   | -49206 | 71.7%   | 83.21   | 83.36  | -1.0% | 81.90      | 82.37  | -1.3% |
| 2010/09/28  | 45136                    | 13.0%  | 16470 | -2.2%  | -28666 | 24.1%   | 83.88   | 84.21  | -0.6% | 83.19      | 83.48  | -1.3% |
| 2010/09/21  | 39948                    | -34.7% | 16848 | 24.1%  | -23100 | -51.5%  | 85.09   | 84.74  | 1.7%  | 84.18      | 84.56  | -0.6% |
| 2010/09/14  | 61215                    | -6.5%  | 13573 | 2.4%   | -47642 | -8.7%   | 83.05   | 83.35  | -0.9% | 85.84      | 85.12  | 1.3%  |
| 2010/09/07  | 65440                    | 6.9%   | 13257 | 17.2%  | -52183 | 4.6%    | 83.80   | 84.08  | -0.5% | 84.16      | 84.03  | -0.6% |
| 2010/08/31  | 61219                    | -3.0%  | 11315 | -5.8%  | -49904 | -2.3%   | 84.16   | 84.51  | 0.2%  | 84.29      | 84.54  | -0.4% |
| 2010/08/24  | 63086                    | 0.5%   | 12017 | -5.9%  | -51069 | 2.2%    | 84.00   | 84.37  | -1.4% | 85.19      | 84.91  | -0.8% |
| 2010/08/17  | 62745                    | -3.9%  | 12776 | -0.5%  | -49969 | -4.8%   | 85.53   | 85.54  | 0.0%  | 85.61      | 85.59  | -0.3% |
| 2010/08/10  | 65314                    | 5.8%   | 12836 | -6.5%  | -52478 | 9.3%    | 85.40   | 85.57  | -0.9% | 86.19      | 85.87  | 0.2%  |
| 2010/08/03  | 61723                    | 27.3%  | 13725 | -26.1% | -47998 | 60.4%   | 85.78   | 86.33  | -1.3% | 85.49      | 85.72  | -1.2% |
| 2010/07/27  | 48488                    | -11.4% | 18567 | 34.3%  | -29921 | -26.9%  | 87.88   | 87.51  | -0.1% | 86.45      | 86.74  | -0.5% |
| 2010/07/20  | 54733                    | -13.4% | 13822 | -12.8% | -40911 | -13.6%  | 87.50   | 87.59  | -0.9% | 87.44      | 87.20  | 0.1%  |
| 2010/07/13  | 63205                    | 1.2%   | 15846 | -35.5% | -47359 | 24.9%   | 88.67   | 88.37  | 0.8%  | 86.59      | 87.15  | -1.2% |
| 2010/07/06  | 62476                    | 20.8%  | 24550 | 1.1%   | -37926 | 38.3%   | 87.55   | 87.70  | -1.4% | 88.58      | 88.22  | 0.3%  |
| 2010/06/29  | 51721                    | 76.8%  | 24294 | -5.2%  | -27427 | 655.6%  | 88.54   | 88.98  | -2.0% | 87.74      | 87.97  | -2.0% |
| 2010/06/22  | 29257                    | 25.5%  | 25627 | -5.0%  | -3630  | -198.6% | 90.54   | 90.79  | -0.7% | 89.21      | 89.77  | -1.3% |
| 2010/06/15  | 23304                    | -18.3% | 26984 | -34.3% | 3680   | -70.7%  | 91.41   | 91.44  | -0.3% | 90.67      | 90.97  | -0.6% |
| 2010/06/08  | 28519                    | -14.1% | 41066 | 3.4%   | 12547  | 93.5%   | 91.51   | 91.68  | 0.9%  | 91.64      | 91.55  | -0.3% |
| 2010/06/01  | 33215                    | 3.8%   | 39699 | -6.0%  | 6484   | -36.7%  | 91.00   | 90.85  | 0.5%  | 91.91      | 91.81  | 1.2%  |
| 2010/05/25  | 31994                    | 49.6%  | 42232 | -24.2% | 10238  | -70.1%  | 90.30   | 90.43  | -2.1% | 91.05      | 90.69  | 0.2%  |
| 2010/05/18  | 21393                    | -8.0%  | 55682 | -3.9%  | 34289  | -1.1%   | 92.12   | 92.41  | 0.3%  | 90.00      | 90.49  | -2.3% |
| 2010/05/11  | 23265                    | 87.2%  | 57934 | -25.8% | 34669  | -47.2%  | 92.68   | 92.09  | -2.3% | 92.46      | 92.58  | 1.2%  |
| 2010/05/04  | 12430                    | -17.2% | 78042 | 20.4%  | 65612  | 31.8%   | 94.62   | 94.30  | 1.0%  | 91.56      | 91.53  | -2.4% |
| 2010/04/27  | 15018                    | 5.7%   | 64795 | 0.4%   | 49777  | -1.1%   | 93.12   | 93.33  | 0.4%  | 93.81      | 93.76  | 0.3%  |
| 2010/04/20  | 14211                    |        | 64549 |        | 50338  |         | 93.23   | 92.94  |       | 93.91      | 93.43  |       |

**JAPANESE YEN - CHICAGO MERCANTILE EXCHANGE  
FUTURES ONLY POSITIONS**

— 金曜締め週Pivot — 火曜締め週Pivot — Short枚数 — Long枚数 — 売り越し枚数



**FX\_勝てば官軍**  
<http://najirane.weblogs.jp/fx/>

**EURO FX - CHICAGO MERCANTILE EXCHANGE  
FUTURES ONLY POSITIONS**

Code-099741

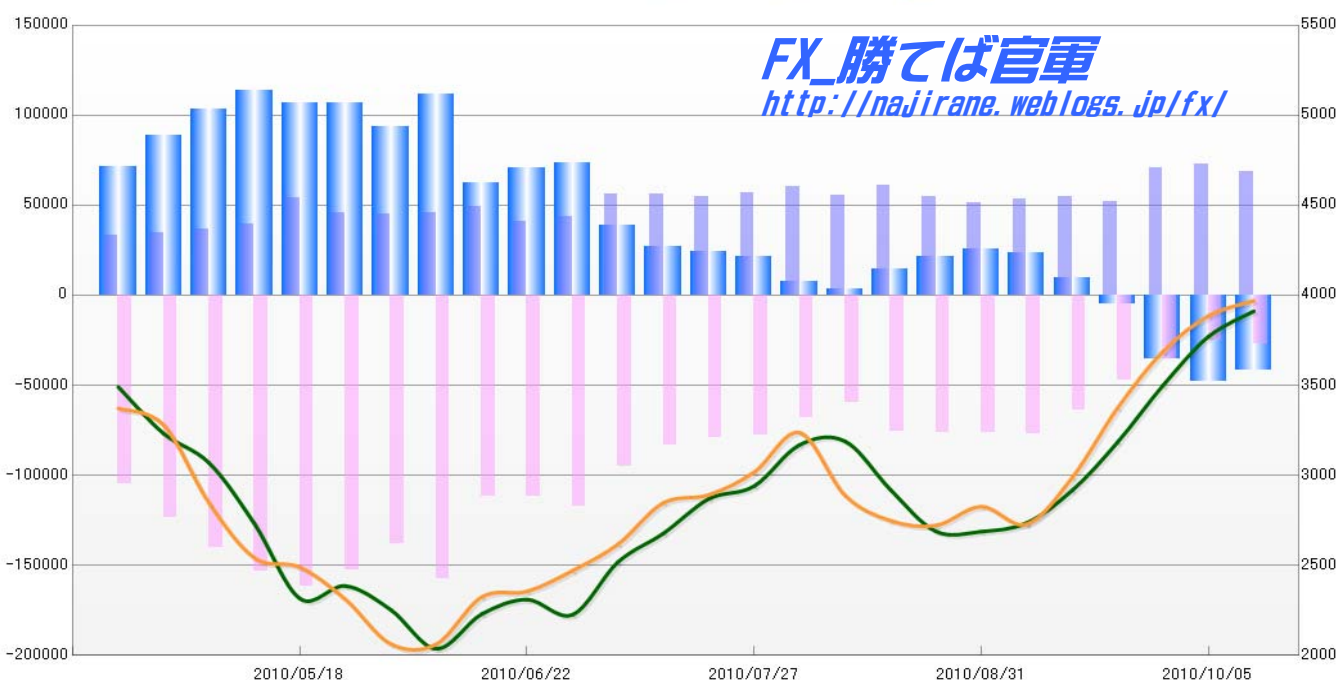
(過去26週)

2010/10/15 公表値

| Report Date | Non Commercial Positions |        |        |        |        |         | 火曜締めユーロドルレート |        |       | 週末締めユーロドルレート |        |       |
|-------------|--------------------------|--------|--------|--------|--------|---------|--------------|--------|-------|--------------|--------|-------|
|             | Long                     | 増減     | Short  | 増減     | 売り越し   | 増減      | Close        | HLCC/4 | 前週比   | Close        | HLCC/4 | 前週比   |
| 2010/10/12  | 68718                    | -5.8%  | 27207  | 10.0%  | -41511 | -14.0%  | 1.3924       | 1.3912 | 1.0%  | 1.3976       | 1.3970 | 0.6%  |
| 2010/10/05  | 72979                    | 3.3%   | 24736  | -29.9% | -48243 | 36.5%   | 1.3832       | 1.3770 | 2.0%  | 1.3940       | 1.3886 | 1.4%  |
| 2010/09/28  | 70638                    | 35.1%  | 35308  | -25.2% | -35330 | 593.2%  | 1.3579       | 1.3500 | 2.4%  | 1.3789       | 1.3688 | 2.3%  |
| 2010/09/21  | 52300                    | -4.1%  | 47203  | -26.5% | -5097  | -152.9% | 1.3251       | 1.3184 | 2.1%  | 1.3488       | 1.3374 | 3.0%  |
| 2010/09/14  | 54543                    | 2.6%   | 64187  | -16.5% | 9644   | -59.3%  | 1.2995       | 1.2916 | 1.4%  | 1.3045       | 1.2988 | 2.0%  |
| 2010/09/07  | 53156                    | 4.0%   | 76855  | 0.2%   | 23699  | -7.3%   | 1.2682       | 1.2736 | 0.4%  | 1.2677       | 1.2729 | -0.8% |
| 2010/08/31  | 51099                    | -6.4%  | 76668  | 0.6%   | 25569  | 18.4%   | 1.2685       | 1.2688 | 0.0%  | 1.2893       | 1.2827 | 0.8%  |
| 2010/08/24  | 54591                    | -11.0% | 76194  | 0.3%   | 21603  | 47.7%   | 1.2624       | 1.2689 | -1.8% | 1.2762       | 1.2722 | -0.2% |
| 2010/08/17  | 61324                    | 9.9%   | 75951  | 27.6%  | 14627  | 292.0%  | 1.2879       | 1.2920 | -2.0% | 1.2705       | 1.2749 | -1.1% |
| 2010/08/10  | 55797                    | -7.6%  | 59528  | -12.1% | 3731   | -48.9%  | 1.3177       | 1.3190 | 0.2%  | 1.2750       | 1.2889 | -2.6% |
| 2010/08/03  | 60410                    | 6.7%   | 67707  | -13.2% | 7297   | -65.8%  | 1.3226       | 1.3169 | 1.8%  | 1.3282       | 1.3237 | 1.7%  |
| 2010/07/27  | 56622                    | 2.9%   | 77961  | -1.6%  | 21339  | -12.0%  | 1.2993       | 1.2940 | 0.6%  | 1.3045       | 1.3018 | 1.0%  |
| 2010/07/20  | 55008                    | -2.1%  | 79259  | -4.8%  | 24251  | -10.3%  | 1.2884       | 1.2869 | 1.5%  | 1.2904       | 1.2892 | 0.3%  |
| 2010/07/13  | 56187                    | -0.2%  | 83237  | -12.6% | 27050  | -30.5%  | 1.2726       | 1.2677 | 1.3%  | 1.2930       | 1.2847 | 1.8%  |
| 2010/07/06  | 56316                    | 29.9%  | 95225  | -18.6% | 38909  | -47.2%  | 1.2623       | 1.2518 | 2.4%  | 1.2634       | 1.2617 | 1.2%  |
| 2010/06/29  | 43357                    | 5.7%   | 117027 | 4.5%   | 73670  | 3.8%    | 1.2179       | 1.2226 | -0.7% | 1.2560       | 1.2471 | 0.9%  |
| 2010/06/22  | 41013                    | -17.2% | 111987 | 0.1%   | 70974  | 13.8%   | 1.2266       | 1.2310 | 0.7%  | 1.2374       | 1.2356 | 0.3%  |
| 2010/06/15  | 49526                    | 7.8%   | 111886 | -29.1% | 62360  | -44.3%  | 1.2323       | 1.2229 | 1.6%  | 1.2384       | 1.2324 | 2.2%  |
| 2010/06/08  | 45938                    | 2.1%   | 157883 | 14.1%  | 111945 | 20.0%   | 1.1972       | 1.2036 | -1.8% | 1.2110       | 1.2062 | 0.0%  |
| 2010/06/01  | 45006                    | -1.4%  | 138331 | -9.2%  | 93325  | -12.6%  | 1.2225       | 1.2253 | -1.1% | 1.1973       | 1.2063 | -2.0% |
| 2010/05/25  | 45630                    | -16.1% | 152366 | -5.7%  | 106736 | -0.4%   | 1.2365       | 1.2386 | 0.6%  | 1.2267       | 1.2311 | -1.4% |
| 2010/05/18  | 54411                    | 37.5%  | 161554 | 5.3%   | 107143 | -5.9%   | 1.2180       | 1.2315 | -3.3% | 1.2570       | 1.2489 | -0.4% |
| 2010/05/11  | 39584                    | 7.9%   | 153474 | 9.6%   | 113890 | 10.1%   | 1.2653       | 1.2730 | -2.6% | 1.2360       | 1.2541 | -2.4% |
| 2010/05/04  | 36675                    | 6.4%   | 140077 | 13.4%  | 103402 | 16.2%   | 1.2980       | 1.3069 | -1.2% | 1.2759       | 1.2845 | -3.3% |
| 2010/04/27  | 34462                    | 2.5%   | 123475 | 17.6%  | 89013  | 24.6%   | 1.3163       | 1.3232 | -1.9% | 1.3295       | 1.3279 | -0.7% |
| 2010/04/20  | 33614                    |        | 105038 |        | 71424  |         | 1.3436       | 1.3491 |       | 1.3383       | 1.3372 |       |

**EURO FX - CHICAGO MERCANTILE EXCHANGE  
FUTURES ONLY POSITIONS**

— 金曜締め週Pivot — 火曜締め週Pivot Short枚数 Long枚数 売り越し枚数



|                  | 2010/10/05   |        |         | 2010/10/12 |         |         |
|------------------|--------------|--------|---------|------------|---------|---------|
|                  | Long         | Short  | 売り越し    | Long       | Short   | 売り越し    |
| JPY              | 66866        | 17660  | -49206  | 66463      | 18178   | -48285  |
|                  | 前週比 枚数増減 (枚) |        |         | -403       | 518     | 921     |
|                  | 前週比 枚数増減 (%) |        |         | 99.40%     | 102.93% | 98.13%  |
| EUR              | 72979        | 24736  | -48243  | 68718      | 27207   | -41511  |
|                  | 前週比 枚数増減 (枚) |        |         | -4261      | 2471    | 6732    |
|                  | 前週比 枚数増減 (%) |        |         | 94.16%     | 109.99% | 86.05%  |
| GBP              | 37064        | 27661  | -9403   | 39870      | 31804   | -8066   |
|                  | 前週比 枚数増減 (枚) |        |         | 2806       | 4143    | 1337    |
|                  | 前週比 枚数増減 (%) |        |         | 107.57%    | 114.98% | 85.78%  |
| AUD              | 81871        | 12835  | -69036  | 79697      | 12006   | -67691  |
|                  | 前週比 枚数増減 (枚) |        |         | -2174      | -829    | 1345    |
|                  | 前週比 枚数増減 (%) |        |         | 97.34%     | 93.54%  | 98.05%  |
| CAD              | 62909        | 20231  | -42678  | 63283      | 19497   | -43786  |
|                  | 前週比 枚数増減 (枚) |        |         | 374        | -734    | -1108   |
|                  | 前週比 枚数増減 (%) |        |         | 100.59%    | 96.37%  | 102.60% |
| CHF              | 31693        | 9094   | -22599  | 31504      | 11557   | -19947  |
|                  | 前週比 枚数増減 (枚) |        |         | -189       | 2463    | 2652    |
|                  | 前週比 枚数増減 (%) |        |         | 99.40%     | 127.08% | 88.26%  |
| MXN              | 106169       | 20405  | -85764  | 108857     | 22639   | -86218  |
|                  | 前週比 枚数増減 (枚) |        |         | 2688       | 2234    | -454    |
|                  | 前週比 枚数増減 (%) |        |         | 102.53%    | 110.95% | 100.53% |
| NZD              | 21339        | 5005   | -16334  | 21276      | 4703    | -16573  |
|                  | 前週比 枚数増減 (枚) |        |         | -63        | -302    | -239    |
|                  | 前週比 枚数増減 (%) |        |         | 99.70%     | 93.97%  | 101.46% |
| Total            | 480890       | 137627 | -343263 | 479668     | 147591  | -332077 |
|                  | 前週比 枚数増減 (枚) |        |         | -1222      | 9964    | 11186   |
|                  | 前週比 枚数増減 (%) |        |         | 99.75%     | 107.24% | 96.74%  |
| Total<br>(MXN除く) | 788745       | 237189 | -257499 | 784016     | 254365  | -245859 |
|                  | 前週比 枚数増減 (枚) |        |         | -4729      | 17176   | 11640   |
|                  | 前週比 枚数増減 (%) |        |         | 99.40%     | 107.24% | 95.48%  |