

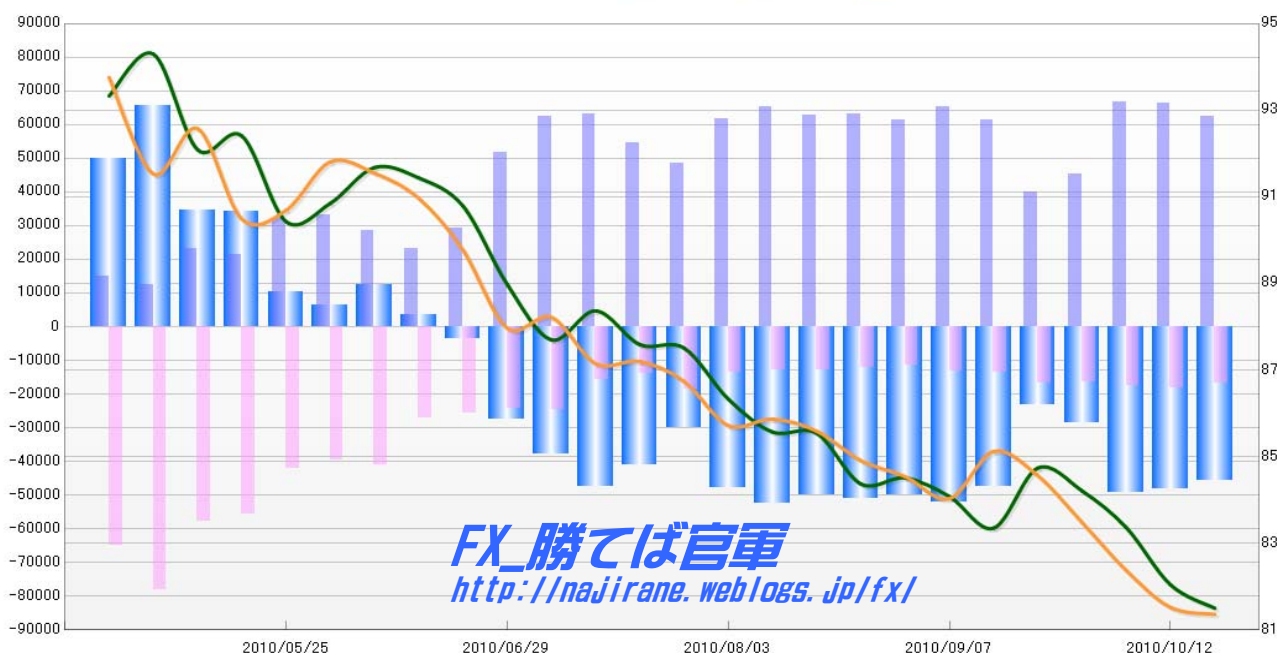
**JAPANESE YEN - CHICAGO MERCANTILE EXCHANGE
FUTURES ONLY POSITIONS**

Code-097741
(過去26週) 2010/10/22 公表値

Report_Date	Non Commercial Positions						火曜締めドル円			週末締めドル円レート		
	Long	増減	Short	増減	売り越し	増減	Close	HLCC/4	前週比	Close	HLCC/4	前週比
2010/10/19	62554	-5.9%	16698	-8.1%	-45856	-5.0%	81.56	81.50	-0.7%	81.35	81.36	-0.2%
2010/10/12	66463	-0.6%	18178	2.9%	-48285	-1.9%	81.76	82.04	-1.6%	81.43	81.52	-1.0%
2010/10/05	66866	48.1%	17660	7.2%	-49206	71.7%	83.21	83.36	-1.0%	81.90	82.37	-1.3%
2010/09/28	45136	13.0%	16470	-2.2%	-28666	24.1%	83.88	84.21	-0.6%	83.19	83.48	-1.3%
2010/09/21	39948	-34.7%	16848	24.1%	-23100	-51.5%	85.09	84.74	1.7%	84.18	84.56	-0.6%
2010/09/14	61215	-6.5%	13573	2.4%	-47642	-8.7%	83.05	83.35	-0.9%	85.84	85.12	1.3%
2010/09/07	65440	6.9%	13257	17.2%	-52183	4.6%	83.80	84.08	-0.5%	84.16	84.03	-0.6%
2010/08/31	61219	-3.0%	11315	-5.8%	-49904	-2.3%	84.16	84.51	0.2%	84.29	84.54	-0.4%
2010/08/24	63086	0.5%	12017	-5.9%	-51069	2.2%	84.00	84.37	-1.4%	85.19	84.91	-0.8%
2010/08/17	62745	-3.9%	12776	-0.5%	-49969	-4.8%	85.53	85.54	0.0%	85.61	85.59	-0.3%
2010/08/10	65314	5.8%	12836	-6.5%	-52478	9.3%	85.40	85.57	-0.9%	86.19	85.87	0.2%
2010/08/03	61723	27.3%	13725	-26.1%	-47998	60.4%	85.78	86.33	-1.3%	85.49	85.72	-1.2%
2010/07/27	48488	-11.4%	18567	34.3%	-29921	-26.9%	87.88	87.51	-0.1%	86.45	86.74	-0.5%
2010/07/20	54733	-13.4%	13822	-12.8%	-40911	-13.6%	87.50	87.59	-0.9%	87.44	87.20	0.1%
2010/07/13	63205	1.2%	15846	-35.5%	-47359	24.9%	88.67	88.37	0.8%	86.59	87.15	-1.2%
2010/07/06	62476	20.8%	24550	1.1%	-37926	38.3%	87.55	87.70	-1.4%	88.58	88.22	0.3%
2010/06/29	51721	76.8%	24294	-5.2%	-27427	655.6%	88.54	88.98	-2.0%	87.74	87.97	-2.0%
2010/06/22	29257	25.5%	25627	-5.0%	-3630	-198.6%	90.54	90.79	-0.7%	89.21	89.77	-1.3%
2010/06/15	23304	-18.3%	26984	-34.3%	3680	-70.7%	91.41	91.44	-0.3%	90.67	90.97	-0.6%
2010/06/08	28519	-14.1%	41066	3.4%	12547	93.5%	91.51	91.68	0.9%	91.64	91.55	-0.3%
2010/06/01	33215	3.8%	39699	-6.0%	6484	-36.7%	91.00	90.85	0.5%	91.91	91.81	1.2%
2010/05/25	31994	49.6%	42232	-24.2%	10238	-70.1%	90.30	90.43	-2.1%	91.05	90.69	0.2%
2010/05/18	21393	-8.0%	55682	-3.9%	34289	-1.1%	92.12	92.41	0.3%	90.00	90.49	-2.3%
2010/05/11	23265	87.2%	57934	-25.8%	34669	-47.2%	92.68	92.09	-2.3%	92.46	92.58	1.2%
2010/05/04	12430	-17.2%	78042	20.4%	65612	31.8%	94.62	94.30	1.0%	91.56	91.53	-2.4%
2010/04/27	15018		64795		49777		93.12	93.33		93.81	93.76	

**JAPANESE YEN - CHICAGO MERCANTILE EXCHANGE
FUTURES ONLY POSITIONS**

— 金曜締め週Pivot — 火曜締め週Pivot — Short枚数 — Long枚数 — 売り越し枚数



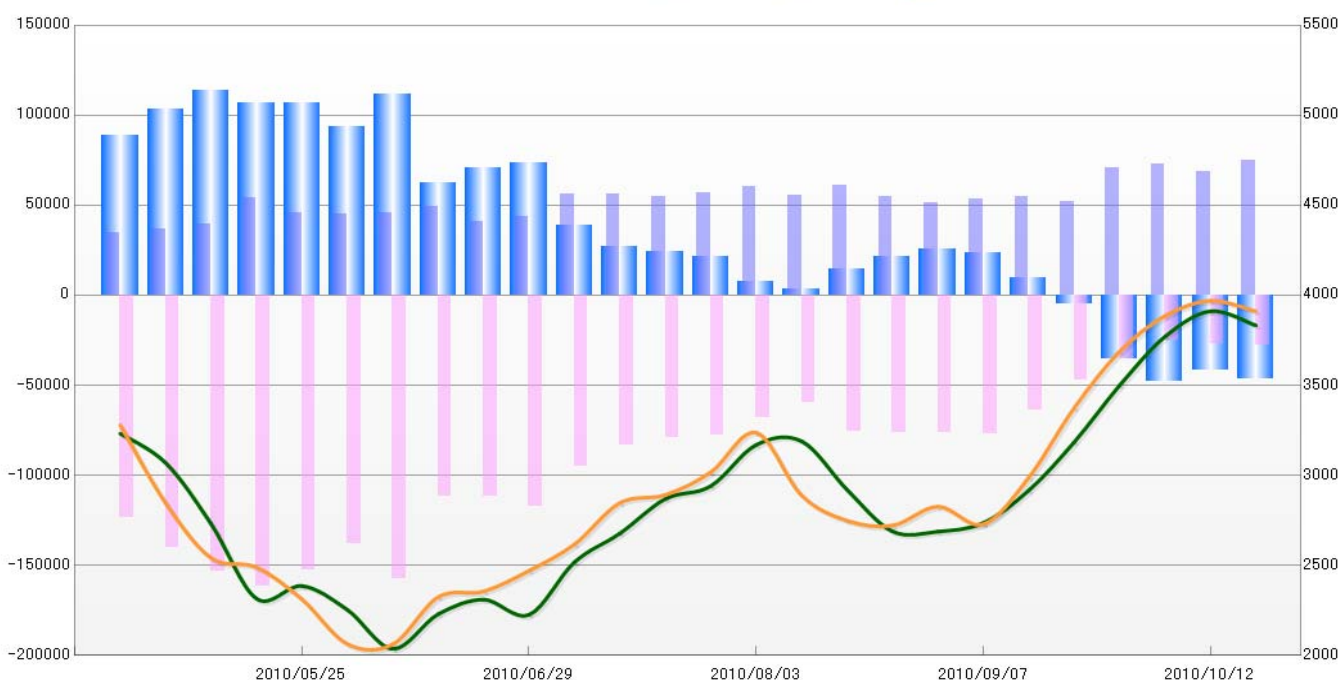
**EURO FX - CHICAGO MERCANTILE EXCHANGE
FUTURES ONLY POSITIONS**

Code-099741
(過去26週) 2010/10/22 公表値

Report_Date	Non Commercial Positions						火曜締めユーロドルレート			週末締めユーロドルレート		
	Long	増減	Short	増減	売り越し	増減	Close	HLCC/4	前週比	Close	HLCC/4	前週比
2010/10/19	74855	8.9%	28107	3.3%	-46748	12.6%	1.3732	1.3833	-0.6%	1.3949	1.3911	-0.4%
2010/10/12	68718	-5.8%	27207	10.0%	-41511	-14.0%	1.3924	1.3912	1.0%	1.3976	1.3970	0.6%
2010/10/05	72979	3.3%	24736	-29.9%	-48243	36.5%	1.3832	1.3770	2.0%	1.3940	1.3886	1.4%
2010/09/28	70638	35.1%	35308	-25.2%	-35330	593.2%	1.3579	1.3500	2.4%	1.3789	1.3688	2.3%
2010/09/21	52300	-4.1%	47203	-26.5%	-5097	-152.9%	1.3251	1.3184	2.1%	1.3488	1.3374	3.0%
2010/09/14	54543	2.6%	64187	-16.5%	9644	-59.3%	1.2995	1.2916	1.4%	1.3045	1.2988	2.0%
2010/09/07	53156	4.0%	76855	0.2%	23699	-7.3%	1.2682	1.2736	0.4%	1.2677	1.2729	-0.8%
2010/08/31	51099	-6.4%	76668	0.6%	25569	18.4%	1.2685	1.2688	0.0%	1.2893	1.2827	0.8%
2010/08/24	54591	-11.0%	76194	0.3%	21603	47.7%	1.2624	1.2689	-1.8%	1.2762	1.2722	-0.2%
2010/08/17	61324	9.9%	75951	27.6%	14627	292.0%	1.2879	1.2920	-2.0%	1.2705	1.2749	-1.1%
2010/08/10	55797	-7.6%	59528	-12.1%	3731	-48.9%	1.3177	1.3190	0.2%	1.2750	1.2889	-2.6%
2010/08/03	60410	6.7%	67707	-13.2%	7297	-65.8%	1.3226	1.3169	1.8%	1.3282	1.3237	1.7%
2010/07/27	56622	2.9%	77961	-1.6%	21339	-12.0%	1.2993	1.2940	0.6%	1.3045	1.3018	1.0%
2010/07/20	55008	-2.1%	79259	-4.8%	24251	-10.3%	1.2884	1.2869	1.5%	1.2904	1.2892	0.3%
2010/07/13	56187	-0.2%	83237	-12.6%	27050	-30.5%	1.2726	1.2677	1.3%	1.2930	1.2847	1.8%
2010/07/06	56316	29.9%	95225	-18.6%	38909	-47.2%	1.2623	1.2518	2.4%	1.2634	1.2617	1.2%
2010/06/29	43357	5.7%	117027	4.5%	73670	3.8%	1.2179	1.2226	-0.7%	1.2560	1.2471	0.9%
2010/06/22	41013	-17.2%	111987	0.1%	70974	13.8%	1.2266	1.2310	0.7%	1.2374	1.2356	0.3%
2010/06/15	49526	7.8%	111886	-29.1%	62360	-44.3%	1.2323	1.2229	1.6%	1.2384	1.2324	2.2%
2010/06/08	45938	2.1%	157883	14.1%	111945	20.0%	1.1972	1.2036	-1.8%	1.2110	1.2062	0.0%
2010/06/01	45006	-1.4%	138331	-9.2%	93325	-12.6%	1.2225	1.2253	-1.1%	1.1973	1.2063	-2.0%
2010/05/25	45630	-16.1%	152366	-5.7%	106736	-0.4%	1.2365	1.2386	0.6%	1.2267	1.2311	-1.4%
2010/05/18	54411	37.5%	161554	5.3%	107143	-5.9%	1.2180	1.2315	-3.3%	1.2570	1.2489	-0.4%
2010/05/11	39584	7.9%	153474	9.6%	113890	10.1%	1.2653	1.2730	-2.6%	1.2360	1.2541	-2.4%
2010/05/04	36675	6.4%	140077	13.4%	103402	16.2%	1.2980	1.3069	-1.2%	1.2759	1.2845	-3.3%
2010/04/27	34462		123475		89013		1.3163	1.3232		1.3295	1.3279	

**EURO FX - CHICAGO MERCANTILE EXCHANGE
FUTURES ONLY POSITIONS**

— 金曜締め週Pivot — 火曜締め週Pivot Short枚数 Long枚数 売り越し枚数



	2010/10/12			2010/10/19		
	Long	Short	売り越し	Long	Short	売り越し
JPY	66463	18178	-48285	62554	16698	-45856
	前週比 枚数増減 (枚)			-3909	-1480	2429
	前週比 枚数増減 (%)			94.12%	91.86%	94.97%
EUR	68718	27207	-41511	74855	28107	-46748
	前週比 枚数増減 (枚)			6137	900	-5237
	前週比 枚数増減 (%)			108.93%	103.31%	112.62%
GBP	39870	31804	-8066	34708	28912	-5796
	前週比 枚数増減 (枚)			-5162	-2892	2270
	前週比 枚数増減 (%)			87.05%	90.91%	71.86%
AUD	79697	12006	-67691	71661	12480	-59181
	前週比 枚数増減 (枚)			-8036	474	8510
	前週比 枚数増減 (%)			89.92%	103.95%	87.43%
CAD	63283	19497	-43786	47852	17112	-30740
	前週比 枚数増減 (枚)			-15431	-2385	13046
	前週比 枚数増減 (%)			75.62%	87.77%	70.21%
CHF	31504	11557	-19947	24908	13673	-11235
	前週比 枚数増減 (枚)			-6596	2116	8712
	前週比 枚数増減 (%)			79.06%	118.31%	56.32%
MXN	108857	22639	-86218	104557	22432	-82125
	前週比 枚数増減 (枚)			-4300	-207	4093
	前週比 枚数増減 (%)			96.05%	99.09%	95.25%
NZD	21276	4703	-16573	21477	6146	-15331
	前週比 枚数増減 (枚)			201	1443	1242
	前週比 枚数増減 (%)			100.94%	130.68%	92.51%
Total	479668	147591	-332077	442572	145560	-297012
	前週比 枚数増減 (枚)			-37096	-2031	35065
	前週比 枚数増減 (%)			92.27%	98.62%	89.44%
Total (MXN除く)	784016	254365	-245859	718033	251990	-214887
	前週比 枚数増減 (枚)			-65983	-2375	30972
	前週比 枚数増減 (%)			91.58%	99.07%	87.40%