

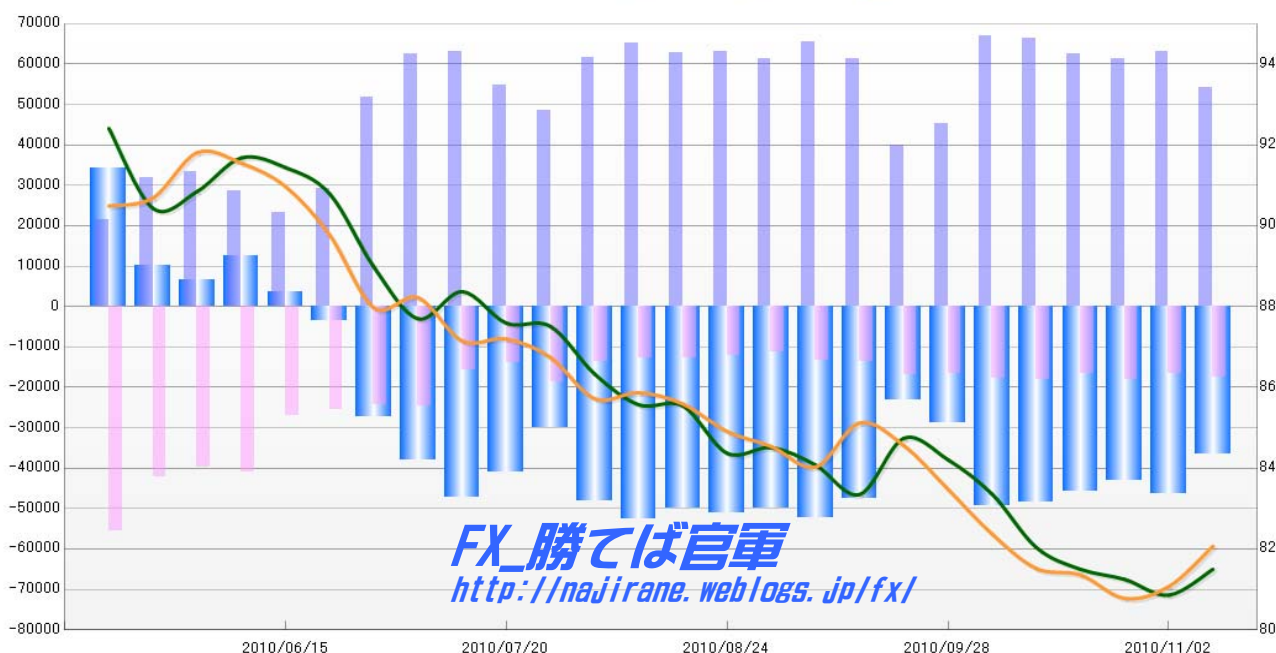
**JAPANESE YEN - CHICAGO MERCANTILE EXCHANGE  
FUTURES ONLY POSITIONS**

Code-097741  
(過去26週) 2010/11/12 公表値

Report_Date	Non Commercial Positions						火曜締めドル円			週末締めドル円レート		
	Long	増減	Short	増減	売り越し	増減	Close	HLCC/4	前週比	Close	HLCC/4	前週比
2010/11/09	54256	-14.0%	17602	6.0%	-36654	-21.1%	81.77	81.50	0.8%	82.50	82.07	1.2%
2010/11/02	63061	2.9%	16606	-8.6%	-46455	7.7%	80.62	80.86	-0.5%	81.25	81.07	0.4%
2010/10/26	61305	-2.0%	18176	8.9%	-43129	-5.9%	81.40	81.25	-0.3%	80.39	80.78	-0.7%
2010/10/19	62554	-5.9%	16698	-8.1%	-45856	-5.0%	81.56	81.50	-0.7%	81.35	81.36	-0.2%
2010/10/12	66463	-0.6%	18178	2.9%	-48285	-1.9%	81.76	82.04	-1.6%	81.43	81.52	-1.0%
2010/10/05	66866	48.1%	17660	7.2%	-49206	71.7%	83.21	83.36	-1.0%	81.90	82.37	-1.3%
2010/09/28	45136	13.0%	16470	-2.2%	-28666	24.1%	83.88	84.21	-0.6%	83.19	83.48	-1.3%
2010/09/21	39948	-34.7%	16848	24.1%	-23100	-51.5%	85.09	84.74	1.7%	84.18	84.56	-0.6%
2010/09/14	61215	-6.5%	13573	2.4%	-47642	-8.7%	83.05	83.35	-0.9%	85.84	85.12	1.3%
2010/09/07	65440	6.9%	13257	17.2%	-52183	4.6%	83.80	84.08	-0.5%	84.16	84.03	-0.6%
2010/08/31	61219	-3.0%	11315	-5.8%	-49904	-2.3%	84.16	84.51	0.2%	84.29	84.54	-0.4%
2010/08/24	63086	0.5%	12017	-5.9%	-51069	2.2%	84.00	84.37	-1.4%	85.19	84.91	-0.8%
2010/08/17	62745	-3.9%	12776	-0.5%	-49969	-4.8%	85.53	85.54	0.0%	85.61	85.59	-0.3%
2010/08/10	65314	5.8%	12836	-6.5%	-52478	9.3%	85.40	85.57	-0.9%	86.19	85.87	0.2%
2010/08/03	61723	27.3%	13725	-26.1%	-47998	60.4%	85.78	86.33	-1.3%	85.49	85.72	-1.2%
2010/07/27	48488	-11.4%	18567	34.3%	-29921	-26.9%	87.88	87.51	-0.1%	86.45	86.74	-0.5%
2010/07/20	54733	-13.4%	13822	-12.8%	-40911	-13.6%	87.50	87.59	-0.9%	87.44	87.20	0.1%
2010/07/13	63205	1.2%	15846	-35.5%	-47359	24.9%	88.67	88.37	0.8%	86.59	87.15	-1.2%
2010/07/06	62476	20.8%	24550	1.1%	-37926	38.3%	87.55	87.70	-1.4%	88.58	88.22	0.3%
2010/06/29	51721	76.8%	24294	-5.2%	-27427	655.6%	88.54	88.98	-2.0%	87.74	87.97	-2.0%
2010/06/22	29257	25.5%	25627	-5.0%	-3630	-198.6%	90.54	90.79	-0.7%	89.21	89.77	-1.3%
2010/06/15	23304	-18.3%	26984	-34.3%	3680	-70.7%	91.41	91.44	-0.3%	90.67	90.97	-0.6%
2010/06/08	28519	-14.1%	41066	3.4%	12547	93.5%	91.51	91.68	0.9%	91.64	91.55	-0.3%
2010/06/01	33215	3.8%	39699	-6.0%	6484	-36.7%	91.00	90.85	0.5%	91.91	91.81	1.2%
2010/05/25	31994	49.6%	42232	-24.2%	10238	-70.1%	90.30	90.43	-2.1%	91.05	90.69	0.2%
2010/05/18	21393		55682		34289		92.12	92.41		90.00	90.49	

**JAPANESE YEN - CHICAGO MERCANTILE EXCHANGE  
FUTURES ONLY POSITIONS**

— 金曜締め週Pivot — 火曜締め週Pivot — Short枚数 — Long枚数 — 売り越し枚数



**EURO FX - CHICAGO MERCANTILE EXCHANGE  
FUTURES ONLY POSITIONS**

Code-099741

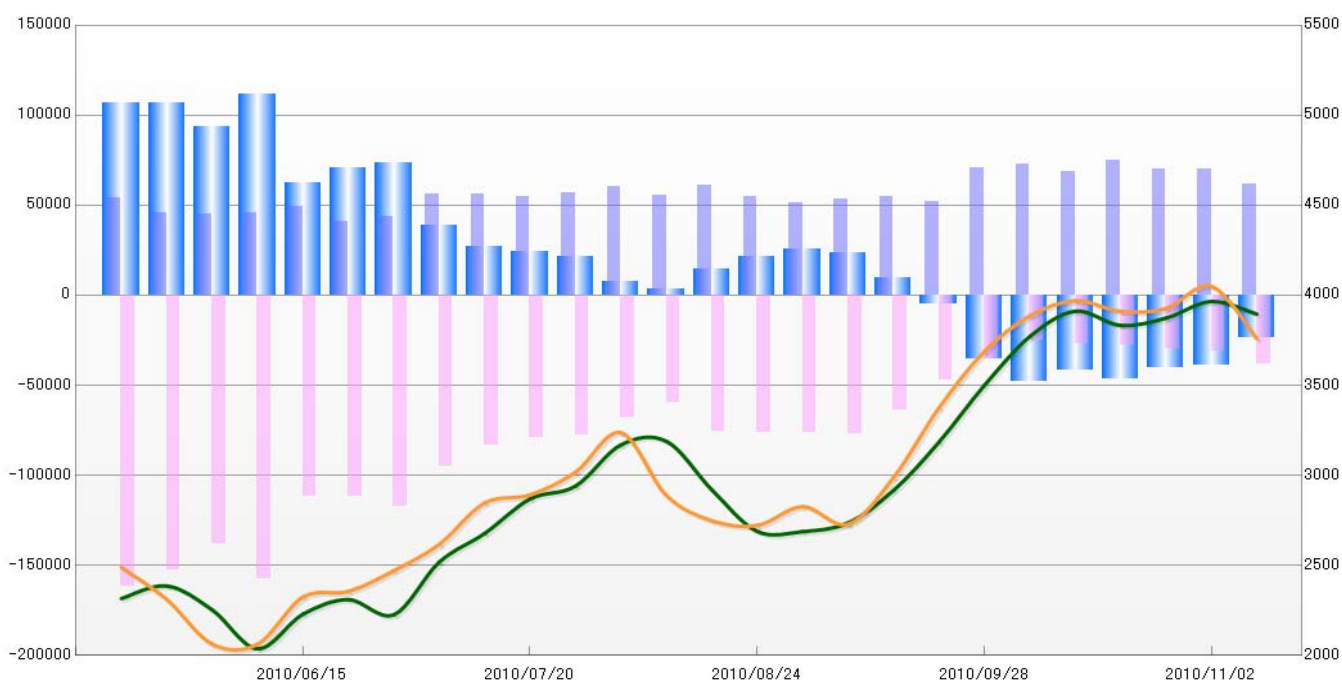
(過去26週)

2010/11/12 公表値

Report_Date	Non Commercial Positions						火曜締めユーロドルレート			週末締めユーロドルレート		
	Long	増減	Short	増減	売り越し	増減	Close	HLCC/4	前週比	Close	HLCC/4	前週比
2010/11/09	61477	-12.4%	38194	21.0%	-23283	-39.7%	1.3777	1.3896	-0.5%	1.3691	1.3759	-2.1%
2010/11/02	70185	0.1%	31575	6.7%	-38610	-4.7%	1.4037	1.3966	0.7%	1.4031	1.4051	0.9%
2010/10/26	70109	-6.3%	29604	5.3%	-40505	-13.4%	1.3859	1.3874	0.3%	1.3947	1.3927	0.1%
2010/10/19	74855	8.9%	28107	3.3%	-46748	12.6%	1.3732	1.3833	-0.6%	1.3949	1.3911	-0.4%
2010/10/12	68718	-5.8%	27207	10.0%	-41511	-14.0%	1.3924	1.3912	1.0%	1.3976	1.3970	0.6%
2010/10/05	72979	3.3%	24736	-29.9%	-48243	36.5%	1.3832	1.3770	2.0%	1.3940	1.3886	1.4%
2010/09/28	70638	35.1%	35308	-25.2%	-35330	593.2%	1.3579	1.3500	2.4%	1.3789	1.3688	2.3%
2010/09/21	52300	-4.1%	47203	-26.5%	-5097	-152.9%	1.3251	1.3184	2.1%	1.3488	1.3374	3.0%
2010/09/14	54543	2.6%	64187	-16.5%	9644	-59.3%	1.2995	1.2916	1.4%	1.3045	1.2988	2.0%
2010/09/07	53156	4.0%	76855	0.2%	23699	-7.3%	1.2682	1.2736	0.4%	1.2677	1.2729	-0.8%
2010/08/31	51099	-6.4%	76668	0.6%	25569	18.4%	1.2685	1.2688	0.0%	1.2893	1.2827	0.8%
2010/08/24	54591	-11.0%	76194	0.3%	21603	47.7%	1.2624	1.2689	-1.8%	1.2762	1.2722	-0.2%
2010/08/17	61324	9.9%	75951	27.6%	14627	292.0%	1.2879	1.2920	-2.0%	1.2705	1.2749	-1.1%
2010/08/10	55797	-7.6%	59528	-12.1%	3731	-48.9%	1.3177	1.3190	0.2%	1.2750	1.2889	-2.6%
2010/08/03	60410	6.7%	67707	-13.2%	7297	-65.8%	1.3226	1.3169	1.8%	1.3282	1.3237	1.7%
2010/07/27	56622	2.9%	77961	-1.6%	21339	-12.0%	1.2993	1.2940	0.6%	1.3045	1.3018	1.0%
2010/07/20	55008	-2.1%	79259	-4.8%	24251	-10.3%	1.2884	1.2869	1.5%	1.2904	1.2892	0.3%
2010/07/13	56187	-0.2%	83237	-12.6%	27050	-30.5%	1.2726	1.2677	1.3%	1.2930	1.2847	1.8%
2010/07/06	56316	29.9%	95225	-18.6%	38909	-47.2%	1.2623	1.2518	2.4%	1.2634	1.2617	1.2%
2010/06/29	43357	5.7%	117027	4.5%	73670	3.8%	1.2179	1.2226	-0.7%	1.2560	1.2471	0.9%
2010/06/22	41013	-17.2%	111987	0.1%	70974	13.8%	1.2266	1.2310	0.7%	1.2374	1.2356	0.3%
2010/06/15	49526	7.8%	111886	-29.1%	62360	-44.3%	1.2323	1.2229	1.6%	1.2384	1.2324	2.2%
2010/06/08	45938	2.1%	157883	14.1%	111945	20.0%	1.1972	1.2036	-1.8%	1.2110	1.2062	0.0%
2010/06/01	45006	-1.4%	138331	-9.2%	93325	-12.6%	1.2225	1.2253	-1.1%	1.1973	1.2063	-2.0%
2010/05/25	45630	-16.1%	152366	-5.7%	106736	-0.4%	1.2365	1.2386	0.6%	1.2267	1.2311	-1.4%
2010/05/18	54411		161554		107143		1.2180	1.2315		1.2570	1.2489	

**EURO FX - CHICAGO MERCANTILE EXCHANGE  
FUTURES ONLY POSITIONS**

— 金曜締め週Pivot — 火曜締め週Pivot Short枚数 Long枚数 売り越し枚数



	2010/10/12			2010/10/19			2010/10/26			2010/11/02			2010/11/09		
	Long	Short	売り越し	Long	Short	売り越し	Long	Short	売り越し	Long	Short	売り越し	Long	Short	売り越し
JPY	66463	18178	-48285	62554	16698	-45856	61305	18176	-43129	63061	16606	-46455	54256	17602	-36654
	前週比 枚数増減 (枚)			-3909	-1480	2429	-1249	1478	2727	1756	-1570	-3326	-8805	996	9801
	前週比 枚数増減 (%)			94.12%	91.86%	94.97%	98.00%	108.85%	94.05%	102.86%	91.36%	107.71%	86.04%	106.00%	78.90%
EUR	68718	27207	-41511	74855	28107	-46748	70109	29604	-40505	70185	31575	-38610	61477	38194	-23283
	前週比 枚数増減 (枚)			6137	900	-5237	-4746	1497	6243	76	1971	1895	-8708	6619	15327
	前週比 枚数増減 (%)			108.93%	103.31%	112.62%	93.66%	105.33%	86.65%	100.11%	106.66%	95.32%	87.59%	120.96%	60.30%
GBP	39870	31804	-8066	34708	28912	-5796	33001	27912	-5089	39900	24718	-15182	41915	20649	-21266
	前週比 枚数増減 (枚)			-5162	-2892	2270	-1707	-1000	707	6899	-3194	-10093	2015	-4069	-6084
	前週比 枚数増減 (%)			87.05%	90.91%	71.86%	95.08%	96.54%	87.80%	120.91%	88.56%	298.33%	105.05%	83.54%	140.07%
AUD	79697	12006	-67691	71661	12480	-59181	67433	12318	-55115	66821	15641	-51180	62983	15367	-47616
	前週比 枚数増減 (枚)			-8036	474	8510	-4228	-162	4066	-612	3323	3935	-3838	-274	3564
	前週比 枚数増減 (%)			89.92%	103.95%	87.43%	94.10%	98.70%	93.13%	99.09%	126.98%	92.86%	94.26%	98.25%	93.04%
CAD	63283	19497	-43786	47852	17112	-30740	37802	17927	-19875	41890	18525	-23365	62533	25195	-37338
	前週比 枚数増減 (枚)			-15431	-2385	13046	-10050	815	10865	4088	598	-3490	20643	6670	-13973
	前週比 枚数増減 (%)			75.62%	87.77%	70.21%	79.00%	104.76%	64.66%	110.81%	103.34%	117.56%	149.28%	136.01%	159.80%
CHF	31504	11557	-19947	24908	13673	-11235	24600	12081	-12519	23363	10898	-12465	24911	12296	-12615
	前週比 枚数増減 (枚)			-6596	2116	8712	-308	-1592	-1284	-1237	-1183	54	1548	1398	-150
	前週比 枚数増減 (%)			79.06%	118.31%	56.32%	98.76%	88.36%	111.43%	94.97%	90.21%	99.57%	106.63%	112.83%	101.20%
MXN	108857	22639	-86218	104557	22432	-82125	103670	23527	-80143	104522	22250	-82272	114547	25801	-88746
	前週比 枚数増減 (枚)			-4300	-207	4093	-887	1095	1982	852	-1277	-2129	10025	3551	-6474
	前週比 枚数増減 (%)			96.05%	99.09%	95.25%	99.15%	104.88%	97.59%	100.82%	94.57%	102.66%	109.59%	115.96%	107.87%
NZD	21276	4703	-16573	21477	6146	-15331	21577	5706	-15871	23393	4245	-19148	26965	4715	-22250
	前週比 枚数増減 (枚)			201	1443	1242	100	-440	-540	1816	-1461	-3277	3572	470	-3102
	前週比 枚数増減 (%)			100.94%	130.68%	92.51%	100.47%	92.84%	103.52%	108.42%	74.40%	120.65%	115.27%	111.07%	116.20%
Total	479668	147591	-332077	442572	145560	-297012	419497	147251	-272246	433135	144458	-288677	449587	159819	-289768
	前週比 枚数増減 (枚)			-37096	-2031	35065	-23075	1691	24766	13638	-2793	-16431	16452	15361	-1091
	前週比 枚数増減 (%)			92.27%	98.62%	89.44%	94.79%	101.16%	91.66%	103.25%	98.10%	106.04%	103.80%	110.63%	100.38%
Total (MXN除く)	370811	124952	-245859	338015	123128	-214887	315827	123724	-192103	328613	122208	-206405	335040	134018	-201022
	前週比 枚数増減 (枚)			-32796	-1824	30972	-22188	596	22784	12786	-1516	-14302	6427	11810	5383
	前週比 枚数増減 (%)			91.16%	98.54%	87.40%	93.44%	100.48%	89.40%	104.05%	98.77%	107.44%	101.96%	109.66%	97.39%

### 直近5週 CFTC IMM主要7通貨の構成

