

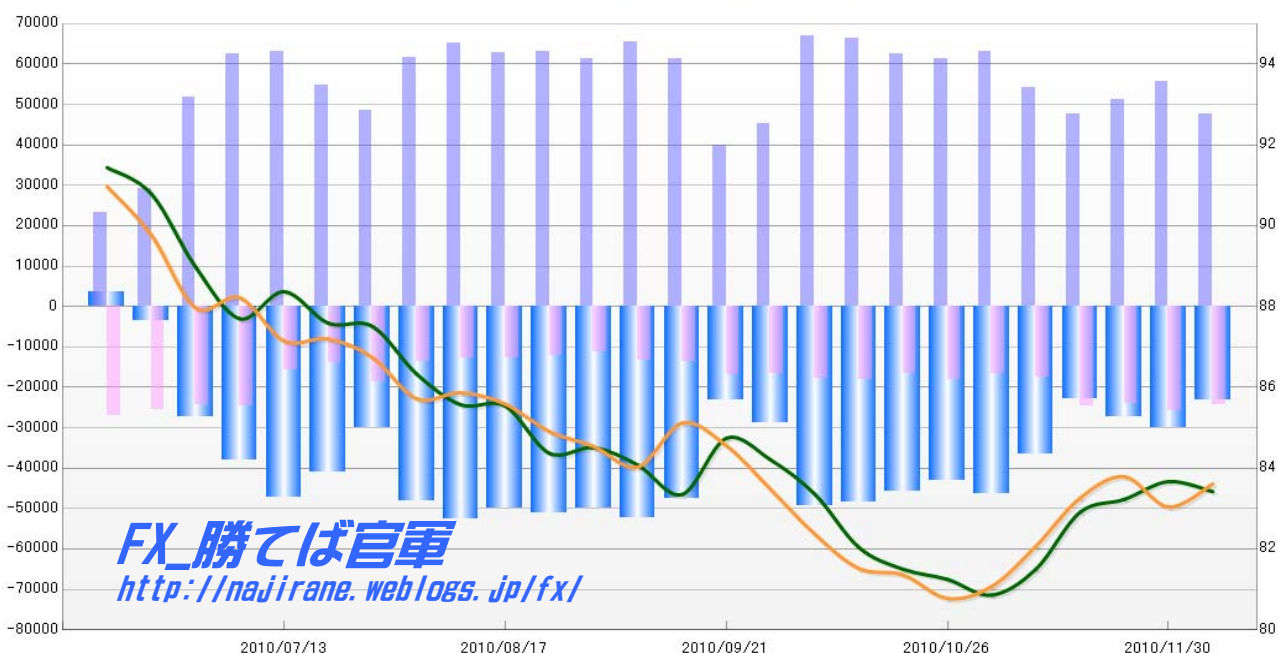
**JAPANESE YEN - CHICAGO MERCANTILE EXCHANGE
FUTURES ONLY POSITIONS**

Code-097741
(過去26週) 2010/12/10 公表値

Report_Date	Non Commercial Positions						火曜締めドル円			週末締めドル円レート		
	Long	増減	Short	増減	売り越し	増減	Close	HLCC/4	前週比	Close	HLCC/4	前週比
2010/12/07	47661	-14.6%	24373	-5.5%	-23288	-22.4%	83.48	83.42	-0.3%	83.91	83.61	0.7%
2010/11/30	55791	9.0%	25785	7.6%	-30006	10.3%	83.67	83.67	0.5%	82.62	83.04	-0.9%
2010/11/23	51161	7.5%	23969	-3.1%	-27192	19.0%	83.16	83.23	0.4%	84.10	83.79	0.6%
2010/11/16	47595	-12.3%	24737	40.5%	-22858	-37.6%	83.26	82.91	1.7%	83.45	83.26	1.4%
2010/11/09	54256	-14.0%	17602	6.0%	-36654	-21.1%	81.77	81.50	0.8%	82.50	82.07	1.2%
2010/11/02	63061	2.9%	16606	-8.6%	-46455	7.7%	80.62	80.86	-0.5%	81.25	81.07	0.4%
2010/10/26	61305	-2.0%	18176	8.9%	-43129	-5.9%	81.40	81.25	-0.3%	80.39	80.78	-0.7%
2010/10/19	62554	-5.9%	16698	-8.1%	-45856	-5.0%	81.56	81.50	-0.7%	81.35	81.36	-0.2%
2010/10/12	66463	-0.6%	18178	2.9%	-48285	-1.9%	81.76	82.04	-1.6%	81.43	81.52	-1.0%
2010/10/05	66866	48.1%	17660	7.2%	-49206	71.7%	83.21	83.36	-1.0%	81.90	82.37	-1.3%
2010/09/28	45136	13.0%	16470	-2.2%	-28666	24.1%	83.88	84.21	-0.6%	83.19	83.48	-1.3%
2010/09/21	39948	-34.7%	16848	24.1%	-23100	-51.5%	85.09	84.74	1.7%	84.18	84.56	-0.6%
2010/09/14	61215	-6.5%	13573	2.4%	-47642	-8.7%	83.05	83.35	-0.9%	85.84	85.12	1.3%
2010/09/07	65440	6.9%	13257	17.2%	-52183	4.6%	83.80	84.08	-0.5%	84.16	84.03	-0.6%
2010/08/31	61219	-3.0%	11315	-5.8%	-49904	-2.3%	84.16	84.51	0.2%	84.29	84.54	-0.4%
2010/08/24	63086	0.5%	12017	-5.9%	-51069	2.2%	84.00	84.37	-1.4%	85.19	84.91	-0.8%
2010/08/17	62745	-3.9%	12776	-0.5%	-49969	-4.8%	85.53	85.54	0.0%	85.61	85.59	-0.3%
2010/08/10	65314	5.8%	12836	-6.5%	-52478	9.3%	85.40	85.57	-0.9%	86.19	85.87	0.2%
2010/08/03	61723	27.3%	13725	-26.1%	-47998	60.4%	85.78	86.33	-1.3%	85.49	85.72	-1.2%
2010/07/27	48488	-11.4%	18567	34.3%	-29921	-26.9%	87.88	87.51	-0.1%	86.45	86.74	-0.5%
2010/07/20	54733	-13.4%	13822	-12.8%	-40911	-13.6%	87.50	87.59	-0.9%	87.44	87.20	0.1%
2010/07/13	63205	1.2%	15846	-35.5%	-47359	24.9%	88.67	88.37	0.8%	86.59	87.15	-1.2%
2010/07/06	62476	20.8%	24550	1.1%	-37926	38.3%	87.55	87.70	-1.4%	88.58	88.22	0.3%
2010/06/29	51721	76.8%	24294	-5.2%	-27427	655.6%	88.54	88.98	-2.0%	87.74	87.97	-2.0%
2010/06/22	29257	25.5%	25627	-5.0%	-3630	-198.6%	90.54	90.79	-0.7%	89.21	89.77	-1.3%
2010/06/15	23304		26984		3680		91.41	91.44		90.67	90.97	

**JAPANESE YEN - CHICAGO MERCANTILE EXCHANGE
FUTURES ONLY POSITIONS**

— 金曜締め週Pivot — 火曜締め週Pivot — Short枚数 — Long枚数 — 売り越し枚数



**EURO FX - CHICAGO MERCANTILE EXCHANGE
FUTURES ONLY POSITIONS**

Code-099741

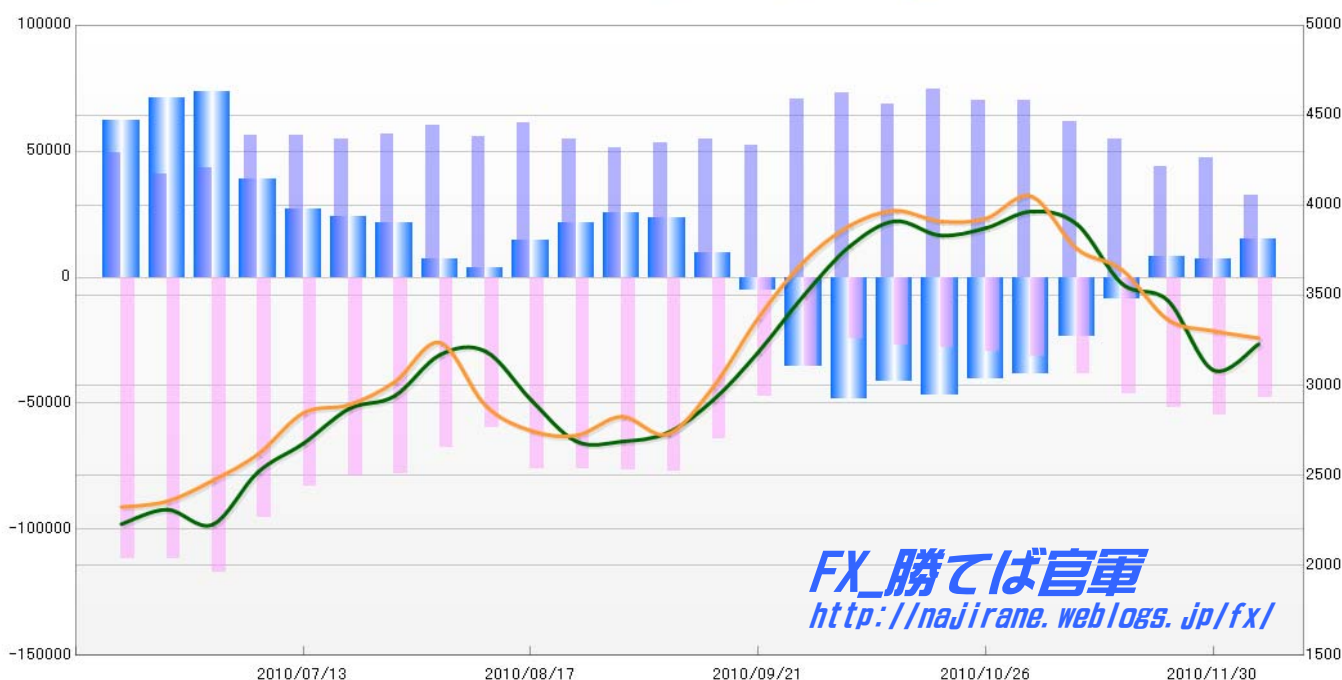
(過去26週)

2010/12/10 公表値

Report_Date	Non Commercial Positions						火曜締めユーロドルレート			週末締めユーロドルレート		
	Long	増減	Short	増減	売り越し	増減	Close	HLCC/4	前週比	Close	HLCC/4	前週比
2010/12/07	32322	-31.6%	47612	-12.7%	15290	111.0%	1.3263	1.3229	1.1%	1.3233	1.3263	-0.3%
2010/11/30	47264	8.2%	54512	4.9%	7248	-12.6%	1.2977	1.3085	-2.9%	1.3414	1.3303	-0.5%
2010/11/23	43670	-20.2%	51963	12.7%	8293	-196.4%	1.3371	1.3472	-0.7%	1.3240	1.3366	-2.0%
2010/11/16	54708	-11.0%	46102	20.7%	-8606	-63.0%	1.3492	1.3564	-2.4%	1.3684	1.3641	-0.9%
2010/11/09	61477	-12.4%	38194	21.0%	-23283	-39.7%	1.3777	1.3896	-0.5%	1.3691	1.3759	-2.1%
2010/11/02	70185	0.1%	31575	6.7%	-38610	-4.7%	1.4037	1.3966	0.7%	1.4031	1.4051	0.9%
2010/10/26	70109	-6.3%	29604	5.3%	-40505	-13.4%	1.3859	1.3874	0.3%	1.3947	1.3927	0.1%
2010/10/19	74855	8.9%	28107	3.3%	-46748	12.6%	1.3732	1.3833	-0.6%	1.3949	1.3911	-0.4%
2010/10/12	68718	-5.8%	27207	10.0%	-41511	-14.0%	1.3924	1.3912	1.0%	1.3976	1.3970	0.6%
2010/10/05	72979	3.3%	24736	-29.9%	-48243	36.5%	1.3832	1.3770	2.0%	1.3940	1.3886	1.4%
2010/09/28	70638	35.1%	35308	-25.2%	-35330	593.2%	1.3579	1.3500	2.4%	1.3789	1.3688	2.3%
2010/09/21	52300	-4.1%	47203	-26.5%	-5097	-152.9%	1.3251	1.3184	2.1%	1.3488	1.3374	3.0%
2010/09/14	54543	2.6%	64187	-16.5%	9644	-59.3%	1.2995	1.2916	1.4%	1.3045	1.2988	2.0%
2010/09/07	53156	4.0%	76855	0.2%	23699	-7.3%	1.2682	1.2736	0.4%	1.2677	1.2729	-0.8%
2010/08/31	51099	-6.4%	76668	0.6%	25569	18.4%	1.2685	1.2688	0.0%	1.2893	1.2827	0.8%
2010/08/24	54591	-11.0%	76194	0.3%	21603	47.7%	1.2624	1.2689	-1.8%	1.2762	1.2722	-0.2%
2010/08/17	61324	9.9%	75951	27.6%	14627	292.0%	1.2879	1.2920	-2.0%	1.2705	1.2749	-1.1%
2010/08/10	55797	-7.6%	59528	-12.1%	3731	-48.9%	1.3177	1.3190	0.2%	1.2750	1.2889	-2.6%
2010/08/03	60410	6.7%	67707	-13.2%	7297	-65.8%	1.3226	1.3169	1.8%	1.3282	1.3237	1.7%
2010/07/27	56622	2.9%	77961	-1.6%	21339	-12.0%	1.2993	1.2940	0.6%	1.3045	1.3018	1.0%
2010/07/20	55008	-2.1%	79259	-4.8%	24251	-10.3%	1.2884	1.2869	1.5%	1.2904	1.2892	0.3%
2010/07/13	56187	-0.2%	83237	-12.6%	27050	-30.5%	1.2726	1.2677	1.3%	1.2930	1.2847	1.8%
2010/07/06	56316	29.9%	95225	-18.6%	38909	-47.2%	1.2623	1.2518	2.4%	1.2634	1.2617	1.2%
2010/06/29	43357	5.7%	117027	4.5%	73670	3.8%	1.2179	1.2226	-0.7%	1.2560	1.2471	0.9%
2010/06/22	41013	-17.2%	111987	0.1%	70974	13.8%	1.2266	1.2310	0.7%	1.2374	1.2356	0.3%
2010/06/15	49526		111886		62360		1.2323	1.2229		1.2384	1.2324	

**EURO FX - CHICAGO MERCANTILE EXCHANGE
FUTURES ONLY POSITIONS**

— 金曜締めの週Pivot — 火曜締めの週Pivot — Short枚数 — Long枚数 — 売り越し枚数



	2010/11/09			2010/11/16			2010/11/23			2010/11/30			2010/12/07		
	Long	Short	売り越し	Long	Short	売り越し	Long	Short	売り越し	Long	Short	売り越し	Long	Short	売り越し
JPY	54256	17602	-36654	47595	24737	-22858	51161	23969	-27192	55791	25785	-30006	47661	24373	-23288
	前週比 枚数増減 (枚)			-6661	7135	13796	3566	-768	-4334	4630	1816	-2814	-8130	-1412	6718
	前週比 枚数増減 (%)			87.72%	140.54%	62.36%	107.49%	96.90%	118.96%	109.05%	107.58%	110.35%	85.43%	94.52%	77.61%
EUR	61477	38194	-23283	54708	46102	-8606	43670	51963	8293	47264	54512	7248	32322	47612	15290
	前週比 枚数増減 (枚)			-6769	7908	14677	-11038	5861	16899	3594	2549	-1045	-14942	-6900	8042
	前週比 枚数増減 (%)			88.99%	120.70%	36.96%	79.82%	112.71%	-96.36%	108.23%	104.91%	87.40%	68.39%	87.34%	210.95%
GBP	41915	20649	-21266	45677	21906	-23771	35839	25642	-10197	24409	29273	4864	14242	27162	12920
	前週比 枚数増減 (枚)			3762	1257	-2505	-9838	3736	13574	-11430	3631	15061	-10167	-2111	8056
	前週比 枚数増減 (%)			108.98%	106.09%	111.78%	78.46%	117.05%	42.90%	68.11%	114.16%	-47.70%	58.35%	92.79%	265.63%
AUD	62983	15367	-47616	52462	16260	-36202	46935	18464	-28471	44794	18151	-26643	53550	10198	-43352
	前週比 枚数増減 (枚)			-10521	893	11414	-5527	2204	7731	-2141	-313	1828	8756	-7953	-16709
	前週比 枚数増減 (%)			83.30%	105.81%	76.03%	89.46%	113.55%	78.64%	95.44%	98.30%	93.58%	119.55%	56.18%	162.71%
CAD	62533	25195	-37338	58390	19949	-38441	36797	14298	-22499	30999	11844	-19155	47003	13281	-33722
	前週比 枚数増減 (枚)			-4143	-5246	-1103	-21593	-5651	15942	-5798	-2454	3344	16004	1437	-14567
	前週比 枚数増減 (%)			93.37%	79.18%	102.95%	63.02%	71.67%	58.53%	84.24%	82.84%	85.14%	151.63%	112.13%	176.05%
CHF	24911	12296	-12615	18005	10202	-7803	14709	6198	-8511	16240	8416	-7824	18014	9027	-8987
	前週比 枚数増減 (枚)			-6906	-2094	4812	-3296	-4004	-708	1531	2218	687	1774	611	-1163
	前週比 枚数増減 (%)			72.28%	82.97%	61.85%	81.69%	60.75%	109.07%	110.41%	135.79%	91.93%	110.92%	107.26%	114.86%
MXN	114547	25801	-88746	115539	22322	-93217	111116	23870	-87246	97199	18293	-78906	78102	18620	-59482
	前週比 枚数増減 (枚)			992	-3479	-4471	-4423	1548	5971	-13917	-5577	8340	-19097	327	19424
	前週比 枚数増減 (%)			100.87%	86.52%	105.04%	96.17%	106.93%	93.59%	87.48%	76.64%	90.44%	80.35%	101.79%	75.38%
NZD	26965	4715	-22250	28915	5470	-23445	26095	5026	-21069	22982	4537	-18445	22024	3763	-18261
	前週比 枚数増減 (枚)			1950	755	-1195	-2820	-444	2376	-3113	-489	2624	-958	-774	184
	前週比 枚数増減 (%)			107.23%	116.01%	105.37%	90.25%	91.88%	89.87%	88.07%	90.27%	87.55%	95.83%	82.94%	99.00%
Total	449587	159819	-289768	421291	166948	-254343	366322	169430	-196892	339678	170811	-168867	312918	154036	-158882
	前週比 枚数増減 (枚)			-28296	7129	35425	-54969	2482	57451	-26644	1381	28025	-26760	-16775	9985
	前週比 枚数増減 (%)			-6.29%	4.46%	-12.23%	-13.05%	1.49%	-22.59%	-7.27%	0.82%	-14.23%	-7.88%	-9.82%	-5.91%
Total (MXN除く)	335040	134018	-201022	305752	144626	-161126	255206	145560	-109646	242479	152518	-89961	234816	135416	-99400
	前週比 枚数増減 (枚)			-29288	10608	39896	-50546	934	51480	-12727	6958	19685	-7663	-17102	-9439
	前週比 枚数増減 (%)			-8.74%	7.92%	-19.85%	-16.53%	0.65%	-31.95%	-4.99%	4.78%	-17.95%	-3.16%	-11.21%	10.49%

直近5週 CFTC IMM主要7通貨の構成

