

**JAPANESE YEN - CHICAGO MERCANTILE EXCHANGE
FUTURES ONLY POSITIONS**

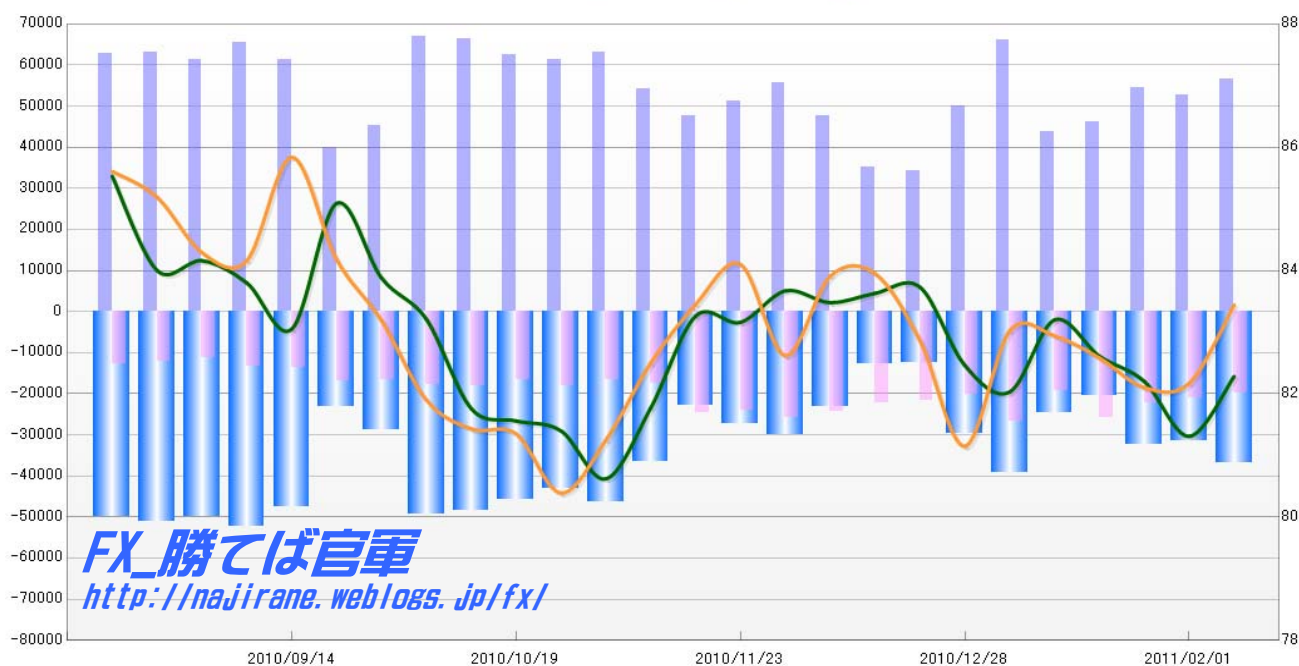
Code-097741

2011/02/11 公表値

Report_Date	Non Commercial Positions								火曜締めドル円		週末締めドル円レート	
	Long	増減	Short	増減	売り越し	増減	売買計	増減	Close	前週比	Close	前週比
2011/02/08	56607	7.5%	19876	-6.1%	-36731	16.7%	76483	3.6%	82.28	1.2%	83.44	1.5%
2011/02/01	52648	-3.4%	21167	-5.0%	-31481	-2.3%	73815	-3.9%	81.31	-1.1%	82.17	0.1%
2011/01/25	54495	17.8%	22277	-13.4%	-32218	56.9%	76772	6.6%	82.20	-0.5%	82.10	-0.6%
2011/01/18	46258	5.4%	25729	34.4%	-20529	-17.0%	71987	14.2%	82.61	-0.7%	82.58	-0.4%
2011/01/11	43884	-33.4%	19148	-28.7%	-24736	-36.7%	63032	-32.1%	83.20	1.4%	82.94	-0.1%
2011/01/04	65924	32.0%	26859	32.3%	-39065	31.8%	92783	32.1%	82.03	-0.5%	83.02	2.3%
2010/12/28	49941	45.8%	20300	-6.5%	-29641	136.6%	70241	25.5%	82.46	-1.5%	81.15	-2.1%
2010/12/21	34243	-2.2%	21714	-2.5%	-12529	-1.6%	55957	-2.3%	83.73	0.1%	82.86	-1.3%
2010/12/14	34996	-26.6%	22261	-8.7%	-12735	-45.3%	57257	-20.5%	83.63	0.2%	83.95	0.0%
2010/12/07	47661	-14.6%	24373	-5.5%	-23288	-22.4%	72034	-11.7%	83.48	-0.2%	83.91	1.6%
2010/11/30	55791	9.0%	25785	7.6%	-30006	10.3%	81576	8.6%	83.67	0.6%	82.62	-1.8%
2010/11/23	51161	7.5%	23969	-3.1%	-27192	19.0%	75130	3.9%	83.16	-0.1%	84.10	0.8%
2010/11/16	47595	-12.3%	24737	40.5%	-22858	-37.6%	72332	0.7%	83.26	1.8%	83.45	1.2%
2010/11/09	54256	-14.0%	17602	6.0%	-36654	-21.1%	71858	-9.8%	81.77	1.4%	82.50	1.5%
2010/11/02	63061	2.9%	16606	-8.6%	-46455	7.7%	79667	0.2%	80.62	-1.0%	81.25	1.1%
2010/10/26	61305	-2.0%	18176	8.9%	-43129	-5.9%	79481	0.3%	81.40	-0.2%	80.39	-1.2%
2010/10/19	62554	-5.9%	16698	-8.1%	-45856	-5.0%	79252	-6.4%	81.56	-0.2%	81.35	-0.1%
2010/10/12	66463	-0.6%	18178	2.9%	-48285	-1.9%	84641	0.1%	81.76	-1.7%	81.43	-0.6%
2010/10/05	66866	48.1%	17660	7.2%	-49206	71.7%	84526	37.2%	83.21	-0.8%	81.90	-1.6%
2010/09/28	45136	13.0%	16470	-2.2%	-28666	24.1%	61606	8.5%	83.88	-1.4%	83.19	-1.2%
2010/09/21	39948	-34.7%	16848	24.1%	-23100	-51.5%	56796	-24.1%	85.09	2.5%	84.18	-1.9%
2010/09/14	61215	-6.5%	13573	2.4%	-47642	-8.7%	74788	-5.0%	83.05	-0.9%	85.84	2.0%
2010/09/07	65440	6.9%	13257	17.2%	-52183	4.6%	78697	8.5%	83.80	-0.4%	84.16	-0.2%
2010/08/31	61219	-3.0%	11315	-5.8%	-49904	-2.3%	72534	-3.4%	84.16	0.2%	84.29	-1.1%
2010/08/24	63086	0.5%	12017	-5.9%	-51069	2.2%	75103	-0.6%	84.00	-1.8%	85.19	-0.5%
2010/08/17	62745		12776		-49969		75521		85.53		85.61	

**JAPANESE YEN - CHICAGO MERCANTILE EXCHANGE
FUTURES ONLY POSITIONS**

— 金曜終値 — 火曜終値 — Short枚数 — Long枚数 — 売り越し枚数



FX_勝てば官軍
<http://najirane.weblogs.jp/fx/>

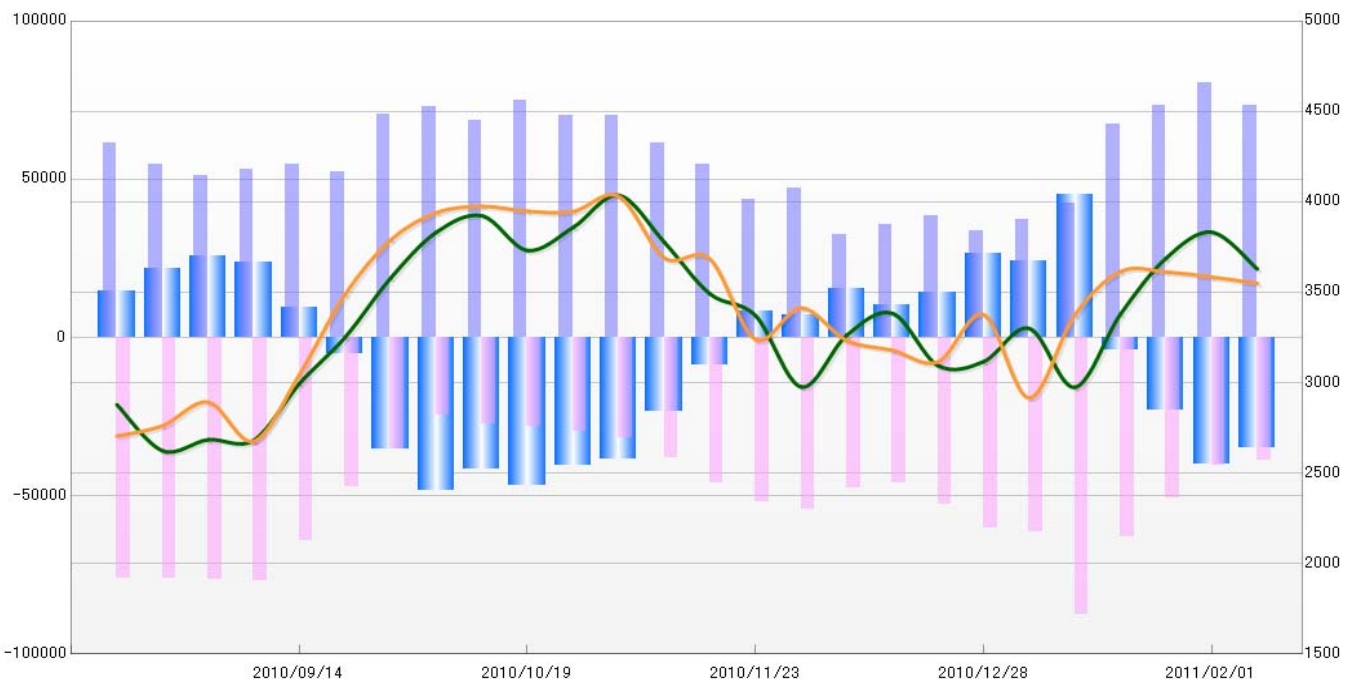
**EURO FX - CHICAGO MERCANTILE EXCHANGE
FUTURES ONLY POSITIONS**

Code-099741
2011/02/11 公表値

Report_Date	Non Commercial Positions								曜締めユーロドルレ-		末締めユーロドルレ-	
	Long	増減	Short	増減	売り越し	増減	売買計	増減	Close	前週比	Close	前週比
2011/02/08	73502	-8.6%	38768	-4.2%	-34734	-13.0%	112270	-7.1%	1.3629	-1.5%	1.3550	-0.3%
2011/02/01	80381	9.4%	40447	-20.0%	-39934	74.4%	120828	-2.6%	1.3833	1.1%	1.3585	-0.2%
2011/01/25	73488	9.2%	50587	-20.0%	-22901	457.3%	124075	-4.9%	1.3689	2.3%	1.3613	0.0%
2011/01/18	67309	58.9%	63200	-27.8%	-4109	-109.1%	130509	0.5%	1.3379	3.1%	1.3615	1.8%
2011/01/11	42359	14.2%	87541	42.8%	45182	86.7%	129900	32.0%	1.2975	-2.5%	1.3375	3.6%
2011/01/04	37102	9.7%	61303	1.6%	24201	-8.6%	98405	4.5%	1.3301	1.4%	1.2916	-3.4%
2010/12/28	33833	-12.4%	60312	14.5%	26479	87.9%	94145	3.1%	1.3117	0.2%	1.3377	2.0%
2010/12/21	38604	8.2%	52697	14.6%	14093	36.8%	91301	11.8%	1.3095	-2.2%	1.3115	-0.5%
2010/12/14	35689	10.4%	45993	-3.4%	10304	-32.6%	81682	2.2%	1.3384	0.9%	1.3180	-0.4%
2010/12/07	32322	-31.6%	47612	-12.7%	15290	111.0%	79934	-21.5%	1.3263	2.2%	1.3233	-1.3%
2010/11/30	47264	8.2%	54512	4.9%	7248	-12.6%	101776	6.4%	1.2977	-2.9%	1.3414	1.3%
2010/11/23	43670	-20.2%	51963	12.7%	8293	-196.4%	95633	-5.1%	1.3371	-0.9%	1.3240	-3.2%
2010/11/16	54708	-11.0%	46102	20.7%	-8606	-63.0%	100810	1.1%	1.3492	-2.1%	1.3684	-0.1%
2010/11/09	61477	-12.4%	38194	21.0%	-23283	-39.7%	99671	-2.1%	1.3777	-1.9%	1.3691	-2.4%
2010/11/02	70185	0.1%	31575	6.7%	-38610	-4.7%	101760	2.1%	1.4037	1.3%	1.4031	0.6%
2010/10/26	70109	-6.3%	29604	5.3%	-40505	-13.4%	99713	-3.2%	1.3859	0.9%	1.3947	0.0%
2010/10/19	74855	8.9%	28107	3.3%	-46748	12.6%	102962	7.3%	1.3732	-1.4%	1.3949	-0.2%
2010/10/12	68718	-5.8%	27207	10.0%	-41511	-14.0%	95925	-1.8%	1.3924	0.7%	1.3976	0.3%
2010/10/05	72979	3.3%	24736	-29.9%	-48243	36.5%	97715	-7.8%	1.3832	1.9%	1.3940	1.1%
2010/09/28	70638	35.1%	35308	-25.2%	-35330	593.2%	105946	6.5%	1.3579	2.5%	1.3789	2.2%
2010/09/21	52300	-4.1%	47203	-26.5%	-5097	-152.9%	99503	-16.2%	1.3251	2.0%	1.3488	3.4%
2010/09/14	54543	2.6%	64187	-16.5%	9644	-59.3%	118730	-8.7%	1.2995	2.5%	1.3045	2.9%
2010/09/07	53156	4.0%	76855	0.2%	23699	-7.3%	130011	1.8%	1.2682	0.0%	1.2677	-1.7%
2010/08/31	51099	-6.4%	76668	0.6%	25569	18.4%	127767	-2.3%	1.2685	0.5%	1.2893	1.0%
2010/08/24	54591	-11.0%	76194	0.3%	21603	47.7%	130785	-4.7%	1.2624	-2.0%	1.2762	0.4%
2010/08/17	61324		75951		14627		137275		1.2879		1.2705	

**EURO FX - CHICAGO MERCANTILE EXCHANGE
FUTURES ONLY POSITIONS**

— 金曜締め週Pivot — 火曜締め週Pivot Short枚数 Long枚数 売り越し枚数



	2011/01/11			2011/01/18			2011/01/25			2011/02/01			2011/02/08		
	Long	Short	売り越し	Long	Short	売り越し	Long	Short	売り越し	Long	Short	売り越し	Long	Short	売り越し
JPY	43884	19148	-24736	46258	25729	-20529	54495	22277	-32218	52648	21167	-31481	56607	19876	-36731
	前週比 枚数増減 (枚)			2374	6581	4207	8237	-3452	-11689	-1847	-1110	737	3959	-1291	-5250
	前週比 枚数増減 (%)			105.41%	134.37%	82.99%	117.81%	86.58%	156.94%	96.61%	95.02%	97.71%	107.52%	93.90%	116.68%
EUR	42359	87541	45182	67309	63200	-4109	73488	50587	-22901	80381	40447	-39934	73502	38768	-34734
	前週比 枚数増減 (枚)			24950	-24341	-49291	6179	-12613	-18792	6893	-10140	-17033	-6879	-1679	5200
	前週比 枚数増減 (%)			158.90%	72.19%	-9.09%	109.18%	80.04%	557.34%	109.38%	79.96%	174.38%	91.44%	95.85%	86.98%
GBP	21014	26104	5090	31415	25621	-5794	36028	28140	-7888	46923	24264	-22659	49204	24729	-24475
	前週比 枚数増減 (枚)			10401	-483	-10884	4613	2519	-2094	10895	-3876	-14771	2281	465	-1816
	前週比 枚数増減 (%)			149.50%	98.15%	-113.83%	114.68%	109.83%	136.14%	130.24%	86.23%	287.26%	104.86%	101.92%	108.01%
AUD	64837	11340	-53497	63811	10303	-53508	59185	13727	-45458	71144	11067	-60077	85741	13762	-71979
	前週比 枚数増減 (枚)			-1026	-1037	-11	-4626	3424	8050	11959	-2660	-14619	14597	2695	-11902
	前週比 枚数増減 (%)			98.42%	90.86%	100.02%	92.75%	133.23%	84.96%	120.21%	80.62%	132.16%	120.52%	124.35%	119.81%
CAD	70872	23115	-47757	67614	23559	-44055	54075	22356	-31719	55186	21372	-33814	72899	33109	-39790
	前週比 枚数増減 (枚)			-3258	444	3702	-13539	-1203	12336	1111	-984	-2095	17713	11737	-5976
	前週比 枚数増減 (%)			95.40%	101.92%	92.25%	79.98%	94.89%	72.00%	102.05%	95.60%	106.60%	132.10%	154.92%	117.67%
CHF	20497	9679	-10818	19711	12719	-6992	17675	11081	-6594	22079	11638	-10441	22686	14505	-8181
	前週比 枚数増減 (枚)			-786	3040	3826	-2036	-1638	398	4404	557	-3847	607	2867	2260
	前週比 枚数増減 (%)			96.17%	131.41%	64.63%	89.67%	87.12%	94.31%	124.92%	105.03%	158.34%	102.75%	124.63%	78.35%
MXN	101710	18138	-83572	108866	18664	-90202	114979	19734	-95245	123543	20426	-103117	122615	18803	-103812
	前週比 枚数増減 (枚)			7156	526	-6630	6113	1070	-5043	8564	692	-7872	-928	-1623	-695
	前週比 枚数増減 (%)			107.04%	102.90%	107.93%	105.62%	105.73%	105.59%	107.45%	103.51%	108.27%	99.25%	92.05%	100.67%
NZD	20943	11323	-9620	21224	9977	-11247	18507	9880	-8627	20041	9771	-10270	20804	9947	-10857
	前週比 枚数増減 (枚)			281	-1346	-1627	-2717	-97	2620	1534	-109	-1643	763	176	-587
	前週比 枚数増減 (%)			101.34%	88.11%	116.91%	87.20%	99.03%	76.70%	108.29%	98.90%	119.04%	103.81%	101.80%	105.72%
Total	386116	206388	-179728	426208	189772	-236436	428432	177782	-250650	471945	160152	-311793	504058	173499	-330559
	前週比 枚数増減 (枚)			40092	-16616	-56708	2224	-11990	-14214	43513	-17630	-61143	32113	13347	-18766
	前週比 枚数増減 (%)			10.38%	-8.05%	31.55%	0.52%	-6.32%	6.01%	10.16%	-9.92%	24.39%	6.80%	8.33%	6.02%
Total (MXN除く)	284406	188250	-96156	317342	171108	-146234	313453	158048	-155405	348402	139726	-208676	381443	154696	-226747
	前週比 枚数増減 (枚)			32936	-17142	-50078	-3889	-13060	-9171	34949	-18322	-53271	33041	14970	-18071
	前週比 枚数増減 (%)			11.58%	-9.11%	52.08%	-1.23%	-7.63%	6.27%	11.15%	-11.59%	34.28%	9.48%	10.71%	8.66%

直近5週 CFTC IMM主要7通貨の構成

