

**JAPANESE YEN - CHICAGO MERCANTILE EXCHANGE
FUTURES ONLY POSITIONS**

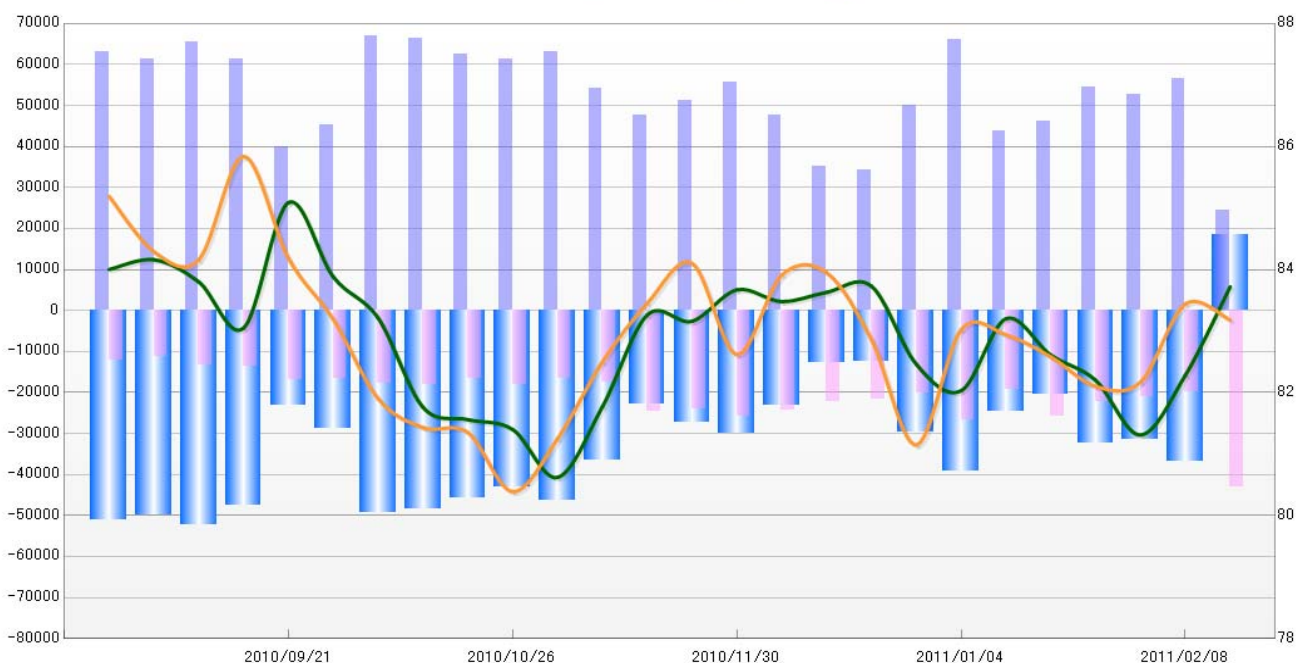
Code-097741

2011/02/18 公表値

Report_Date	Non Commercial Positions								火曜締めドル円		週末締めドル円レート	
	Long	増減	Short	増減	売り越し	増減	売買計	増減	Close	前週比	Close	前週比
2011/02/15	24389	-56.9%	42937	116.0%	18548	-150.5%	67326	-12.0%	83.72	1.8%	83.18	-0.3%
2011/02/08	56607	7.5%	19876	-6.1%	-36731	16.7%	76483	3.6%	82.28	1.2%	83.44	1.5%
2011/02/01	52648	-3.4%	21167	-5.0%	-31481	-2.3%	73815	-3.9%	81.31	-1.1%	82.17	0.1%
2011/01/25	54495	17.8%	22277	-13.4%	-32218	56.9%	76772	6.6%	82.20	-0.5%	82.10	-0.6%
2011/01/18	46258	5.4%	25729	34.4%	-20529	-17.0%	71987	14.2%	82.61	-0.7%	82.58	-0.4%
2011/01/11	43884	-33.4%	19148	-28.7%	-24736	-36.7%	63032	-32.1%	83.20	1.4%	82.94	-0.1%
2011/01/04	65924	32.0%	26859	32.3%	-39065	31.8%	92783	32.1%	82.03	-0.5%	83.02	2.3%
2010/12/28	49941	45.8%	20300	-6.5%	-29641	136.6%	70241	25.5%	82.46	-1.5%	81.15	-2.1%
2010/12/21	34243	-2.2%	21714	-2.5%	-12529	-1.6%	55957	-2.3%	83.73	0.1%	82.86	-1.3%
2010/12/14	34996	-26.6%	22261	-8.7%	-12735	-45.3%	57257	-20.5%	83.63	0.2%	83.95	0.0%
2010/12/07	47661	-14.6%	24373	-5.5%	-23288	-22.4%	72034	-11.7%	83.48	-0.2%	83.91	1.6%
2010/11/30	55791	9.0%	25785	7.6%	-30006	10.3%	81576	8.6%	83.67	0.6%	82.62	-1.8%
2010/11/23	51161	7.5%	23969	-3.1%	-27192	19.0%	75130	3.9%	83.16	-0.1%	84.10	0.8%
2010/11/16	47595	-12.3%	24737	40.5%	-22858	-37.6%	72332	0.7%	83.26	1.8%	83.45	1.2%
2010/11/09	54256	-14.0%	17602	6.0%	-36654	-21.1%	71858	-9.8%	81.77	1.4%	82.50	1.5%
2010/11/02	63061	2.9%	16606	-8.6%	-46455	7.7%	79667	0.2%	80.62	-1.0%	81.25	1.1%
2010/10/26	61305	-2.0%	18176	8.9%	-43129	-5.9%	79481	0.3%	81.40	-0.2%	80.39	-1.2%
2010/10/19	62554	-5.9%	16698	-8.1%	-45856	-5.0%	79252	-6.4%	81.56	-0.2%	81.35	-0.1%
2010/10/12	66463	-0.6%	18178	2.9%	-48285	-1.9%	84641	0.1%	81.76	-1.7%	81.43	-0.6%
2010/10/05	66866	48.1%	17660	7.2%	-49206	71.7%	84526	37.2%	83.21	-0.8%	81.90	-1.6%
2010/09/28	45136	13.0%	16470	-2.2%	-28666	24.1%	61606	8.5%	83.88	-1.4%	83.19	-1.2%
2010/09/21	39948	-34.7%	16848	24.1%	-23100	-51.5%	56796	-24.1%	85.09	2.5%	84.18	-1.9%
2010/09/14	61215	-6.5%	13573	2.4%	-47642	-8.7%	74788	-5.0%	83.05	-0.9%	85.84	2.0%
2010/09/07	65440	6.9%	13257	17.2%	-52183	4.6%	78697	8.5%	83.80	-0.4%	84.16	-0.2%
2010/08/31	61219	-3.0%	11315	-5.8%	-49904	-2.3%	72534	-3.4%	84.16	0.2%	84.29	-1.1%
2010/08/24	63086		12017		-51069		75103		84.00		85.19	

**JAPANESE YEN - CHICAGO MERCANTILE EXCHANGE
FUTURES ONLY POSITIONS**

— 金曜終値 — 火曜終値 — Short枚数 — Long枚数 — 売り越し枚数



**EURO FX - CHICAGO MERCANTILE EXCHANGE
FUTURES ONLY POSITIONS**

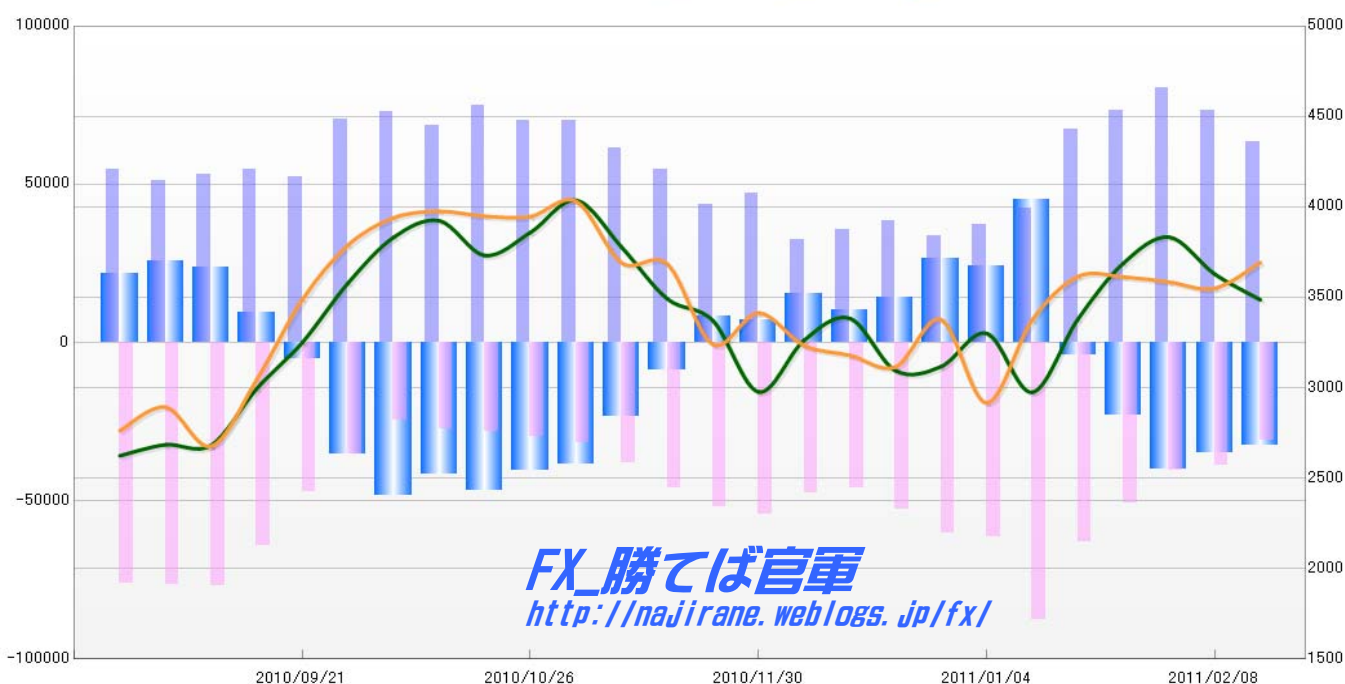
Code-099741

2011/02/18 公表値

Report_Date	Non Commercial Positions								曜締めユーロドルレ-		末締めユーロドルレ-	
	Long	増減	Short	増減	売り越し	増減	売買計	増減	Close	前週比	Close	前週比
2011/02/15	63395	-13.8%	30931	-20.2%	-32464	-6.5%	94326	-16.0%	1.3487	-1.0%	1.3693	1.1%
2011/02/08	73502	-8.6%	38768	-4.2%	-34734	-13.0%	112270	-7.1%	1.3629	-1.5%	1.3550	-0.3%
2011/02/01	80381	9.4%	40447	-20.0%	-39934	74.4%	120828	-2.6%	1.3833	1.1%	1.3585	-0.2%
2011/01/25	73488	9.2%	50587	-20.0%	-22901	457.3%	124075	-4.9%	1.3689	2.3%	1.3613	0.0%
2011/01/18	67309	58.9%	63200	-27.8%	-4109	-109.1%	130509	0.5%	1.3379	3.1%	1.3615	1.8%
2011/01/11	42359	14.2%	87541	42.8%	45182	86.7%	129900	32.0%	1.2975	-2.5%	1.3375	3.6%
2011/01/04	37102	9.7%	61303	1.6%	24201	-8.6%	98405	4.5%	1.3301	1.4%	1.2916	-3.4%
2010/12/28	33833	-12.4%	60312	14.5%	26479	87.9%	94145	3.1%	1.3117	0.2%	1.3377	2.0%
2010/12/21	38604	8.2%	52697	14.6%	14093	36.8%	91301	11.8%	1.3095	-2.2%	1.3115	-0.5%
2010/12/14	35689	10.4%	45993	-3.4%	10304	-32.6%	81682	2.2%	1.3384	0.9%	1.3180	-0.4%
2010/12/07	32322	-31.6%	47612	-12.7%	15290	111.0%	79934	-21.5%	1.3263	2.2%	1.3233	-1.3%
2010/11/30	47264	8.2%	54512	4.9%	7248	-12.6%	101776	6.4%	1.2977	-2.9%	1.3414	1.3%
2010/11/23	43670	-20.2%	51963	12.7%	8293	-196.4%	95633	-5.1%	1.3371	-0.9%	1.3240	-3.2%
2010/11/16	54708	-11.0%	46102	20.7%	-8606	-63.0%	100810	1.1%	1.3492	-2.1%	1.3684	-0.1%
2010/11/09	61477	-12.4%	38194	21.0%	-23283	-39.7%	99671	-2.1%	1.3777	-1.9%	1.3691	-2.4%
2010/11/02	70185	0.1%	31575	6.7%	-38610	-4.7%	101760	2.1%	1.4037	1.3%	1.4031	0.6%
2010/10/26	70109	-6.3%	29604	5.3%	-40505	-13.4%	99713	-3.2%	1.3859	0.9%	1.3947	0.0%
2010/10/19	74855	8.9%	28107	3.3%	-46748	12.6%	102962	7.3%	1.3732	-1.4%	1.3949	-0.2%
2010/10/12	68718	-5.8%	27207	10.0%	-41511	-14.0%	95925	-1.8%	1.3924	0.7%	1.3976	0.3%
2010/10/05	72979	3.3%	24736	-29.9%	-48243	36.5%	97715	-7.8%	1.3832	1.9%	1.3940	1.1%
2010/09/28	70638	35.1%	35308	-25.2%	-35330	593.2%	105946	6.5%	1.3579	2.5%	1.3789	2.2%
2010/09/21	52300	-4.1%	47203	-26.5%	-5097	-152.9%	99503	-16.2%	1.3251	2.0%	1.3488	3.4%
2010/09/14	54543	2.6%	64187	-16.5%	9644	-59.3%	118730	-8.7%	1.2995	2.5%	1.3045	2.9%
2010/09/07	53156	4.0%	76855	0.2%	23699	-7.3%	130011	1.8%	1.2682	0.0%	1.2677	-1.7%
2010/08/31	51099	-6.4%	76668	0.6%	25569	18.4%	127767	-2.3%	1.2685	0.5%	1.2893	1.0%
2010/08/24	54591		76194		21603		130785		1.2624		1.2762	

**EURO FX - CHICAGO MERCANTILE EXCHANGE
FUTURES ONLY POSITIONS**

— 金曜締め週Pivot — 火曜締め週Pivot — Short枚数 — Long枚数 — 売り越し枚数



	2011/01/18			2011/01/25			2011/02/01			2011/02/08			2011/02/15		
	Long	Short	売り越し	Long	Short	売り越し	Long	Short	売り越し	Long	Short	売り越し	Long	Short	売り越し
JPY	46258	25729	-20529	54495	22277	-32218	52648	21167	-31481	56607	19876	-36731	24389	42937	18548
	前週比 枚数増減 (枚)			8237	-3452	-11689	-1847	-1110	737	3959	-1291	-5250	-32218	23061	55279
	前週比 枚数増減 (%)			17.81%	-13.42%	56.94%	-3.39%	-4.98%	-2.29%	7.52%	-6.10%	16.68%	-56.92%	116.02%	-150.50%
EUR	67309	63200	-4109	73488	50587	-22901	80381	40447	-39934	73502	38768	-34734	63395	30931	-32464
	前週比 枚数増減 (枚)			6179	-12613	-18792	6893	-10140	-17033	-6879	-1679	5200	-10107	-7837	2270
	前週比 枚数増減 (%)			9.18%	-19.96%	457.34%	9.38%	-20.04%	74.38%	-8.56%	-4.15%	-13.02%	-13.75%	-20.22%	-6.54%
GBP	31415	25621	-5794	36028	28140	-7888	46923	24264	-22659	49204	24729	-24475	68885	16313	-52572
	前週比 枚数増減 (枚)			4613	2519	-2094	10895	-3876	-14771	2281	465	-1816	19681	-8416	-28097
	前週比 枚数増減 (%)			14.68%	9.83%	36.14%	30.24%	-13.77%	187.26%	4.86%	1.92%	8.01%	40.00%	-34.03%	114.80%
AUD	63811	10303	-53508	59185	13727	-45458	71144	11067	-60077	85741	13762	-71979	70847	5333	-65514
	前週比 枚数増減 (枚)			-4626	3424	8050	11959	-2660	-14619	14597	2695	-11902	-14894	-8429	6465
	前週比 枚数増減 (%)			-7.25%	33.23%	-15.04%	20.21%	-19.38%	32.16%	20.52%	24.35%	19.81%	-17.37%	-61.25%	-8.98%
CAD	67614	23559	-44055	54075	22356	-31719	55186	21372	-33814	72899	33109	-39790	77018	4928	-72090
	前週比 枚数増減 (枚)			-13539	-1203	12336	1111	-984	-2095	17713	11737	-5976	4119	-28181	-32300
	前週比 枚数増減 (%)			-20.02%	-5.11%	-28.00%	2.05%	-4.40%	6.60%	32.10%	54.92%	17.67%	5.65%	-85.12%	81.18%
CHF	19711	12719	-6992	17675	11081	-6594	22079	11638	-10441	22686	14505	-8181	17467	6949	-10518
	前週比 枚数増減 (枚)			-2036	-1638	398	4404	557	-3847	607	2867	2260	-5219	-7556	-2337
	前週比 枚数増減 (%)			-10.33%	-12.88%	-5.69%	24.92%	5.03%	58.34%	2.75%	24.63%	-21.65%	-23.01%	-52.09%	28.57%
MXN	108866	18664	-90202	114979	19734	-95245	123543	20426	-103117	122615	18803	-103812	116892	7796	-109096
	前週比 枚数増減 (枚)			6113	1070	-5043	8564	692	-7872	-928	-1623	-695	-5723	-11007	-5284
	前週比 枚数増減 (%)			5.62%	5.73%	5.59%	7.45%	3.51%	8.27%	-0.75%	-7.95%	0.67%	-4.67%	-58.54%	5.09%
NZD	21224	9977	-11247	18507	9880	-8627	20041	9771	-10270	20804	9947	-10857	18018	8208	-9810
	前週比 枚数増減 (枚)			-2717	-97	2620	1534	-109	-1643	763	176	-587	-2786	-1739	1047
	前週比 枚数増減 (%)			-12.80%	-0.97%	-23.30%	8.29%	-1.10%	19.04%	3.81%	1.80%	5.72%	-13.39%	-17.48%	-9.64%
Total	426208	189772	-236436	428432	177782	-250650	471945	160152	-311793	504058	173499	-330559	456911	123395	-333516
	前週比 枚数増減 (枚)			2224	-11990	-14214	43513	-17630	-61143	32113	13347	-18766	-47147	-50104	-2957
	前週比 枚数増減 (%)			0.52%	-6.32%	6.01%	10.16%	-9.92%	24.39%	6.80%	8.33%	6.02%	-9.35%	-28.88%	0.89%
Total (MXN除く)	317342	171108	-146234	313453	158048	-155405	348402	139726	-208676	381443	154696	-226747	340019	115599	-224420
	前週比 枚数増減 (枚)			-3889	-13060	-9171	34949	-18322	-53271	33041	14970	-18071	-41424	-39097	2327
	前週比 枚数増減 (%)			-1.23%	-7.63%	6.27%	11.15%	-11.59%	34.28%	9.48%	10.71%	8.66%	-10.86%	-25.27%	-1.03%

直近5週 CFTC IMM主要7通貨の構成

