

**JAPANESE YEN - CHICAGO MERCANTILE EXCHANGE
FUTURES ONLY POSITIONS**

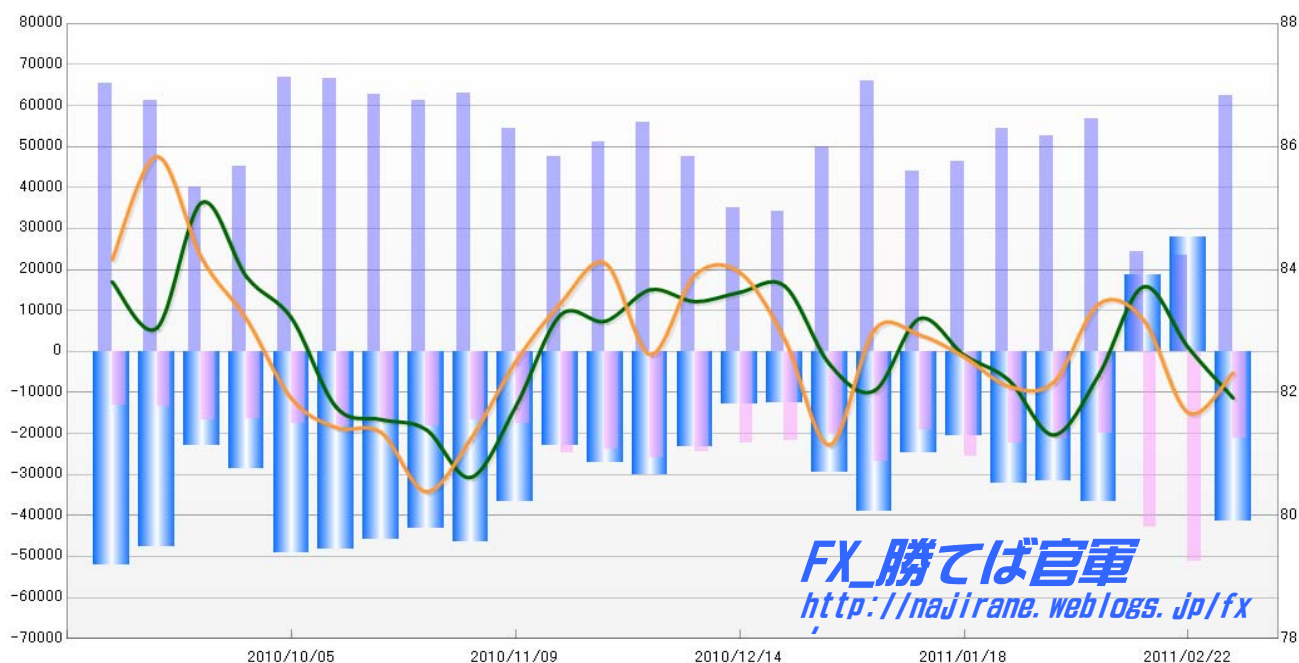
Code-097741

2011/03/04 公表値

Report_Date	Non Commercial Positions								火曜締めドル円		週末締めドル円レート	
	Long	増減	Short	増減	売り越し	増減	売買計	増減	Close	前週比	Close	前週比
2011/03/01	62396	166.0%	21122	-58.7%	-41274	-248.8%	83518	11.9%	81.91	-1.0%	82.32	0.8%
2011/02/22	23457	-3.8%	51203	19.3%	27746	49.6%	74660	10.9%	82.73	-1.2%	81.67	-1.8%
2011/02/15	24389	-56.9%	42937	116.0%	18548	-150.5%	67326	-12.0%	83.72	1.8%	83.18	-0.3%
2011/02/08	56607	7.5%	19876	-6.1%	-36731	16.7%	76483	3.6%	82.28	1.2%	83.44	1.5%
2011/02/01	52648	-3.4%	21167	-5.0%	-31481	-2.3%	73815	-3.9%	81.31	-1.1%	82.17	0.1%
2011/01/25	54495	17.8%	22277	-13.4%	-32218	56.9%	76772	6.6%	82.20	-0.5%	82.10	-0.6%
2011/01/18	46258	5.4%	25729	34.4%	-20529	-17.0%	71987	14.2%	82.61	-0.7%	82.58	-0.4%
2011/01/11	43884	-33.4%	19148	-28.7%	-24736	-36.7%	63032	-32.1%	83.20	1.4%	82.94	-0.1%
2011/01/04	65924	32.0%	26859	32.3%	-39065	31.8%	92783	32.1%	82.03	-0.5%	83.02	2.3%
2010/12/28	49941	45.8%	20300	-6.5%	-29641	136.6%	70241	25.5%	82.46	-1.5%	81.15	-2.1%
2010/12/21	34243	-2.2%	21714	-2.5%	-12529	-1.6%	55957	-2.3%	83.73	0.1%	82.86	-1.3%
2010/12/14	34996	-26.6%	22261	-8.7%	-12735	-45.3%	57257	-20.5%	83.63	0.2%	83.95	0.0%
2010/12/07	47661	-14.6%	24373	-5.5%	-23288	-22.4%	72034	-11.7%	83.48	-0.2%	83.91	1.6%
2010/11/30	55791	9.0%	25785	7.6%	-30006	10.3%	81576	8.6%	83.67	0.6%	82.62	-1.8%
2010/11/23	51161	7.5%	23969	-3.1%	-27192	19.0%	75130	3.9%	83.16	-0.1%	84.10	0.8%
2010/11/16	47595	-12.3%	24737	40.5%	-22858	-37.6%	72332	0.7%	83.26	1.8%	83.45	1.2%
2010/11/09	54256	-14.0%	17602	6.0%	-36654	-21.1%	71858	-9.8%	81.77	1.4%	82.50	1.5%
2010/11/02	63061	2.9%	16606	-8.6%	-46455	7.7%	79667	0.2%	80.62	-1.0%	81.25	1.1%
2010/10/26	61305	-2.0%	18176	8.9%	-43129	-5.9%	79481	0.3%	81.40	-0.2%	80.39	-1.2%
2010/10/19	62554	-5.9%	16698	-8.1%	-45856	-5.0%	79252	-6.4%	81.56	-0.2%	81.35	-0.1%
2010/10/12	66463	-0.6%	18178	2.9%	-48285	-1.9%	84641	0.1%	81.76	-1.7%	81.43	-0.6%
2010/10/05	66866	48.1%	17660	7.2%	-49206	71.7%	84526	37.2%	83.21	-0.8%	81.90	-1.6%
2010/09/28	45136	13.0%	16470	-2.2%	-28666	24.1%	61606	8.5%	83.88	-1.4%	83.19	-1.2%
2010/09/21	39948	-34.7%	16848	24.1%	-23100	-51.5%	56796	-24.1%	85.09	2.5%	84.18	-1.9%
2010/09/14	61215	-6.5%	13573	2.4%	-47642	-8.7%	74788	-5.0%	83.05	-0.9%	85.84	2.0%
2010/09/07	65440		13257		-52183		78697		83.80		84.16	

**JAPANESE YEN - CHICAGO MERCANTILE EXCHANGE
FUTURES ONLY POSITIONS**

— 金曜終値 — 火曜終値 — Short枚数 — Long枚数 — 売り越し枚数



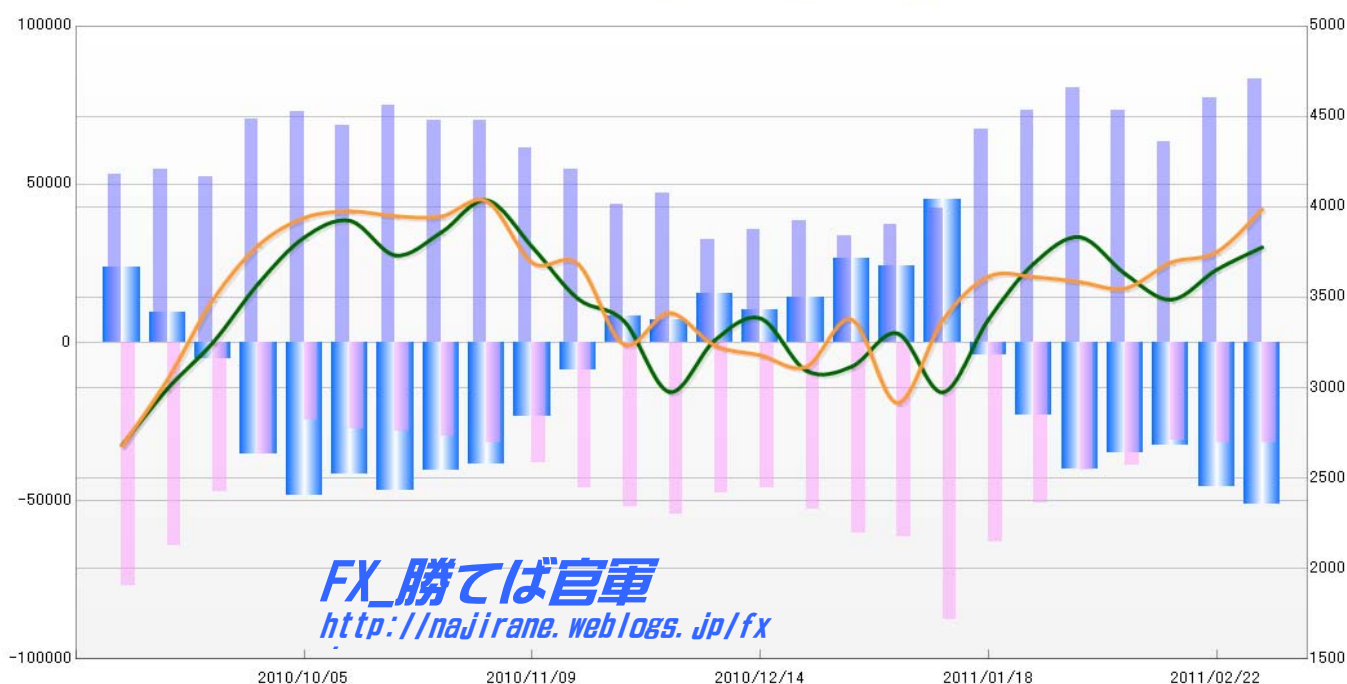
**EURO FX - CHICAGO MERCANTILE EXCHANGE
FUTURES ONLY POSITIONS**

Code-099741
2011/03/04 公表値

Report_Date	Non Commercial Positions								曜締めユーロドルレ-		末締めユーロドルレ-	
	Long	増減	Short	増減	売り越し	増減	売買計	増減	Close	前週比	Close	前週比
2011/03/01	83104	7.3%	31796	-0.2%	-51308	12.5%	114900	5.1%	1.3777	0.9%	1.3987	1.7%
2011/02/22	77454	22.2%	31856	3.0%	-45598	40.5%	109310	15.9%	1.3653	1.2%	1.3750	0.4%
2011/02/15	63395	-13.8%	30931	-20.2%	-32464	-6.5%	94326	-16.0%	1.3487	-1.0%	1.3693	1.1%
2011/02/08	73502	-8.6%	38768	-4.2%	-34734	-13.0%	112270	-7.1%	1.3629	-1.5%	1.3550	-0.3%
2011/02/01	80381	9.4%	40447	-20.0%	-39934	74.4%	120828	-2.6%	1.3833	1.1%	1.3585	-0.2%
2011/01/25	73488	9.2%	50587	-20.0%	-22901	457.3%	124075	-4.9%	1.3689	2.3%	1.3613	0.0%
2011/01/18	67309	58.9%	63200	-27.8%	-4109	-109.1%	130509	0.5%	1.3379	3.1%	1.3615	1.8%
2011/01/11	42359	14.2%	87541	42.8%	45182	86.7%	129900	32.0%	1.2975	-2.5%	1.3375	3.6%
2011/01/04	37102	9.7%	61303	1.6%	24201	-8.6%	98405	4.5%	1.3301	1.4%	1.2916	-3.4%
2010/12/28	33833	-12.4%	60312	14.5%	26479	87.9%	94145	3.1%	1.3117	0.2%	1.3377	2.0%
2010/12/21	38604	8.2%	52697	14.6%	14093	36.8%	91301	11.8%	1.3095	-2.2%	1.3115	-0.5%
2010/12/14	35689	10.4%	45993	-3.4%	10304	-32.6%	81682	2.2%	1.3384	0.9%	1.3180	-0.4%
2010/12/07	32322	-31.6%	47612	-12.7%	15290	111.0%	79934	-21.5%	1.3263	2.2%	1.3233	-1.3%
2010/11/30	47264	8.2%	54512	4.9%	7248	-12.6%	101776	6.4%	1.2977	-2.9%	1.3414	1.3%
2010/11/23	43670	-20.2%	51963	12.7%	8293	-196.4%	95633	-5.1%	1.3371	-0.9%	1.3240	-3.2%
2010/11/16	54708	-11.0%	46102	20.7%	-8606	-63.0%	100810	1.1%	1.3492	-2.1%	1.3684	-0.1%
2010/11/09	61477	-12.4%	38194	21.0%	-23283	-39.7%	99671	-2.1%	1.3777	-1.9%	1.3691	-2.4%
2010/11/02	70185	0.1%	31575	6.7%	-38610	-4.7%	101760	2.1%	1.4037	1.3%	1.4031	0.6%
2010/10/26	70109	-6.3%	29604	5.3%	-40505	-13.4%	99713	-3.2%	1.3859	0.9%	1.3947	0.0%
2010/10/19	74855	8.9%	28107	3.3%	-46748	12.6%	102962	7.3%	1.3732	-1.4%	1.3949	-0.2%
2010/10/12	68718	-5.8%	27207	10.0%	-41511	-14.0%	95925	-1.8%	1.3924	0.7%	1.3976	0.3%
2010/10/05	72979	3.3%	24736	-29.9%	-48243	36.5%	97715	-7.8%	1.3832	1.9%	1.3940	1.1%
2010/09/28	70638	35.1%	35308	-25.2%	-35330	593.2%	105946	6.5%	1.3579	2.5%	1.3789	2.2%
2010/09/21	52300	-4.1%	47203	-26.5%	-5097	-152.9%	99503	-16.2%	1.3251	2.0%	1.3488	3.4%
2010/09/14	54543	2.6%	64187	-16.5%	9644	-59.3%	118730	-8.7%	1.2995	2.5%	1.3045	2.9%
2010/09/07	53156		76855		23699		130011		1.2682		1.2677	

**EURO FX - CHICAGO MERCANTILE EXCHANGE
FUTURES ONLY POSITIONS**

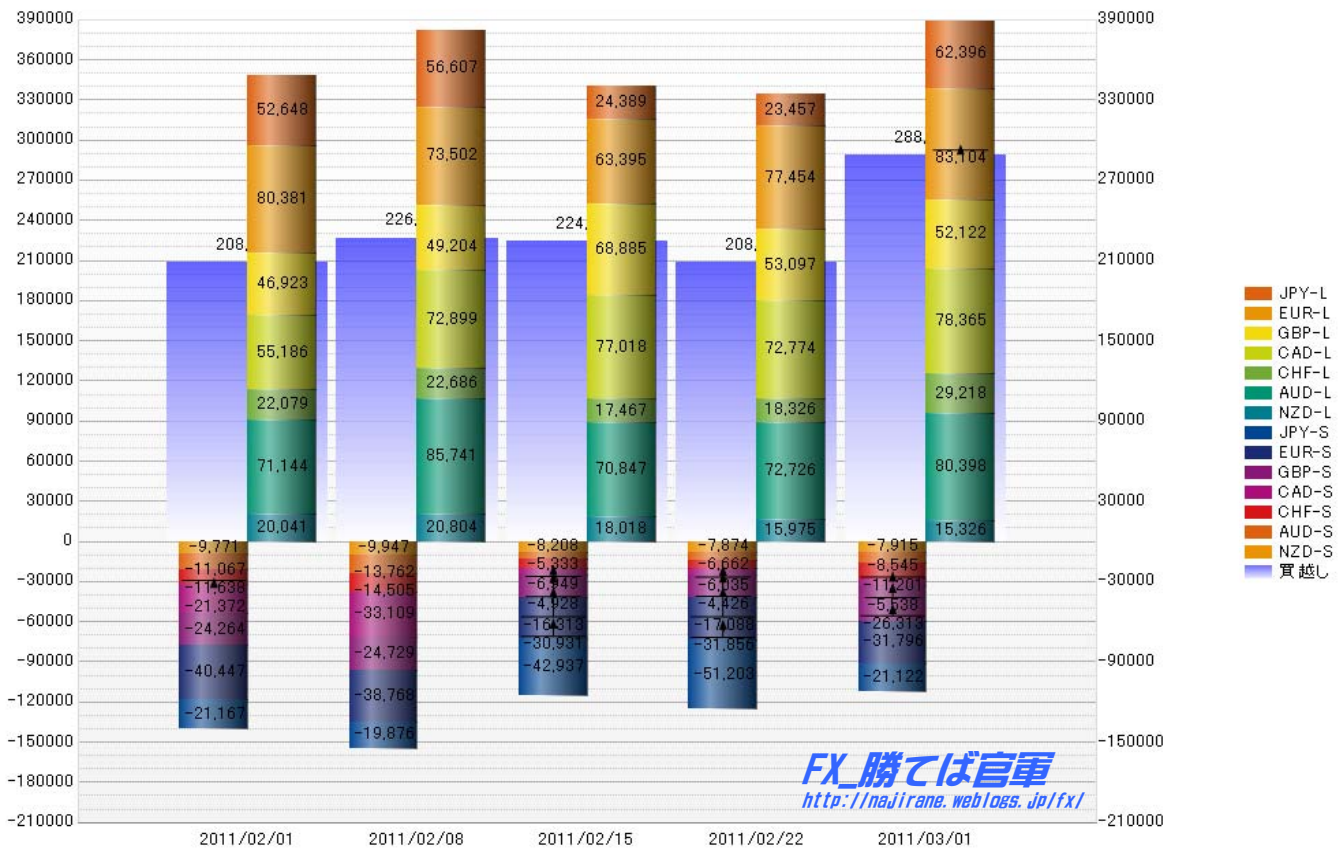
— 金曜締め週終値 — 火曜締め週終値 — Short枚数 — Long枚数 — 売り越し枚数



FX_勝てば官軍
<http://najirane.weblogs.jp/fx>

	2011/02/01			2011/02/08			2011/02/15			2011/02/22			2011/03/01		
	Long	Short	売り越し	Long	Short	売り越し	Long	Short	売り越し	Long	Short	売り越し	Long	Short	売り越し
JPY	52648	21167	-31481	56607	19876	-36731	24389	42937	18548	23457	51203	27746	62396	21122	-41274
	前週比 枚数増減 (枚)			3959	-1291	-5250	-32218	23061	55279	-932	8266	9198	38939	-30081	-69020
	前週比 枚数増減 (%)			7.52%	-6.10%	16.68%	-56.92%	116.02%	-150.50%	-3.82%	19.25%	49.59%	166.00%	-58.75%	-248.76%
EUR	80381	40447	-39934	73502	38768	-34734	63395	30931	-32464	77454	31856	-45598	83104	31796	-51308
	前週比 枚数増減 (枚)			-6879	-1679	5200	-10107	-7837	2270	14059	925	-13134	5650	-60	-5710
	前週比 枚数増減 (%)			-8.56%	-4.15%	-13.02%	-13.75%	-20.22%	-6.54%	22.18%	2.99%	40.46%	7.29%	-0.19%	12.52%
GBP	46923	24264	-22659	49204	24729	-24475	68885	16313	-52572	53097	17088	-36009	52122	26313	-25809
	前週比 枚数増減 (枚)			2281	465	-1816	19681	-8416	-28097	-15788	775	16563	-975	9225	10200
	前週比 枚数増減 (%)			4.86%	1.92%	8.01%	40.00%	-34.03%	114.80%	-22.92%	4.75%	-31.51%	-1.84%	53.99%	-28.33%
AUD	71144	11067	-60077	85741	13762	-71979	70847	5333	-65514	72726	6662	-66064	80398	8545	-71853
	前週比 枚数増減 (枚)			14597	2695	-11902	-14894	-8429	6465	1879	1329	-550	7672	1883	-5789
	前週比 枚数増減 (%)			20.52%	24.35%	19.81%	-17.37%	-61.25%	-8.98%	2.65%	24.92%	0.84%	10.55%	28.26%	8.76%
CAD	55186	21372	-33814	72899	33109	-39790	77018	4928	-72090	72774	4426	-68348	78365	5538	-72827
	前週比 枚数増減 (枚)			17713	11737	-5976	4119	-28181	-32300	-4244	-502	3742	5591	1112	-4479
	前週比 枚数増減 (%)			32.10%	54.92%	17.67%	5.65%	-85.12%	81.18%	-5.51%	-10.19%	-5.19%	7.68%	25.12%	6.55%
CHF	22079	11638	-10441	22686	14505	-8181	17467	6949	-10518	18326	6035	-12291	29218	11201	-18017
	前週比 枚数増減 (枚)			607	2867	2260	-5219	-7556	-2337	859	-914	-1773	10892	5166	-5726
	前週比 枚数増減 (%)			2.75%	24.63%	-21.65%	-23.01%	-52.09%	28.57%	4.92%	-13.15%	16.86%	59.43%	85.60%	46.59%
MXN	123543	20426	-103117	122615	18803	-103812	116892	7796	-109096	118448	4172	-114276	101537	4335	-97202
	前週比 枚数増減 (枚)			-928	-1623	-695	-5723	-11007	-5284	1556	-3624	-5180	-16911	163	17074
	前週比 枚数増減 (%)			-0.75%	-7.95%	0.67%	-4.67%	-58.54%	5.09%	1.33%	-46.49%	4.75%	-14.28%	3.91%	-14.94%
NZD	20041	9771	-10270	20804	9947	-10857	18018	8208	-9810	15975	7874	-8101	15326	7915	-7411
	前週比 枚数増減 (枚)			763	176	-587	-2786	-1739	1047	-2043	-334	1709	-649	41	690
	前週比 枚数増減 (%)			3.81%	1.80%	5.72%	-13.39%	-17.48%	-9.64%	-11.34%	-4.07%	-17.42%	-4.06%	0.52%	-8.52%
Total	471945	160152	-311793	504058	173499	-330559	456911	123395	-333516	452257	129316	-322941	502466	116765	-385701
	前週比 枚数増減 (枚)			32113	13347	-18766	-47147	-50104	-2957	-4654	5921	10575	50209	-12551	-62760
	前週比 枚数増減 (%)			6.80%	8.33%	6.02%	-9.35%	-28.88%	0.89%	-1.02%	4.80%	-3.17%	11.10%	-9.71%	19.43%
Total (MXN除く)	348402	139726	-208676	381443	154696	-226747	340019	115599	-224420	333809	125144	-208665	400929	112430	-288499
	前週比 枚数増減 (枚)			33041	14970	-18071	-41424	-39097	2327	-6210	9545	15755	67120	-12714	-79834
	前週比 枚数増減 (%)			9.48%	10.71%	8.66%	-10.86%	-25.27%	-1.03%	-1.83%	8.26%	-7.02%	20.11%	-10.16%	38.26%

直近5週 CFTC IMM主要7通貨の構成



Date	投機筋集計				実需筋集計				投機筋+実需筋合計				ドル円終値	
	円買い	円売り	売り越し	売買計	円買い	円売り	売り越し	売買計	円買い	円売り	売り越し	売買計	火曜締め	金曜締め
2011/03/01	62396	21122	-41274	83518	47763	79625	31862	127388	110159	100747	-9412	210906	81.91	82.32
2011/02/22	23457	51203	27746	74660	78336	37856	-40480	116192	101793	89059	-12734	190852	82.73	81.67
2011/02/15	24389	42937	18548	67326	71070	37558	-33512	108628	95459	80495	-14964	175954	83.72	83.18
2011/02/08	56607	19876	-36731	76483	34434	63374	28940	97808	91041	83250	-7791	174291	82.28	83.44
2011/02/01	52648	21167	-31481	73815	36222	61666	25444	97888	88870	82833	-6037	171703	81.31	82.17
2011/01/25	54495	22277	-32218	76772	36405	63818	27413	100223	90900	86095	-4805	176995	82.2	82.1
2011/01/18	46258	25729	-20529	71987	38744	53151	14407	91895	85002	78880	-6122	163882	82.61	82.58
2011/01/11	43884	19148	-24736	63032	39826	57651	17825	97477	83710	76799	-6911	160509	83.2	82.94
2011/01/04	65924	26859	-39065	92783	35714	74487	38773	110201	101638	101346	-292	202984	82.03	83.02
2010/12/28	49941	20300	-29641	70241	35204	59053	23849	94257	85145	79353	-5792	164498	82.46	81.15
2010/12/21	34243	21714	-12529	55957	36574	38943	2369	75517	70817	60657	-10160	131474	83.73	82.86
2010/12/14	34996	22261	-12735	57257	41019	43890	2871	84909	76015	66151	-9864	142166	83.63	83.95
2010/12/07	47661	24373	-23288	72034	55384	74207	18823	129591	103045	98580	-4465	201625	83.48	83.91
2010/11/30	55791	25785	-30006	81576	51521	75586	24065	127107	107312	101371	-5941	208683	83.67	82.62