

# 過去5日及び過去4週の4本値と各種ピボット

# 2013/06/10 ~ 2013/06/14

USD/JPY					Demark								Pivot					Fibonacci Zone										
					当日のOHLCLから計算される翌日の																							
日足	Open	High	Low	Close	値幅/日	引け形態	真の高値	真の安値	予想高値	予想安値	予想高値	予想安値	StopLoss	Support	Pivot	Resistance	StopLoss	3-days AVG	Support Zone 2	Support Zone 1	BP	Resistance Zone 1	Resistance Zone 2					
													LBOP	S2	S1	PP	R1	R2	HBOP									
2013/06/10	97.85	99.27	97.71	98.99	157p	陰線引け	-	-	-	-	-	-	96.47	97.09	98.04	98.66	99.60	100.22	101.17				96.49 ~ 97.09	97.69 ~ 97.87	98.66	99.44 ~ 99.62	100.22 ~ 100.82	
2013/06/11	98.99	98.99	95.60	96.03	338p	陰線引け	98.99	95.60	97.51	94.13	97.51	94.13	91.38	93.49	94.76	96.87	98.14	100.25	101.52				92.20 ~ 93.49	94.78 ~ 95.18	96.87	98.56 ~ 98.96	100.25 ~ 101.54	
2013/06/12	96.03	97.01	95.14	95.85	187p	陰線引け	97.01	95.14	96.43	94.56	96.43	94.56	93.11	94.13	94.99	96.00	96.86	97.87	98.73	97.18	Bear			93.41 ~ 94.13	94.84 ~ 95.06	96.00	96.93 ~ 97.16	97.87 ~ 98.59
2013/06/13	95.85	95.96	93.80	95.60	216p	陰線引け	95.96	93.80	95.78	93.62	95.78	93.62	92.12	92.96	94.28	95.12	96.44	97.28	98.60	96.00	Bear			92.13 ~ 92.96	93.78 ~ 94.04	95.12	96.20 ~ 96.45	97.28 ~ 98.10
2013/06/14	95.62	95.73	93.99	94.04	175p	陰線引け	95.73	93.99	94.89	93.62	94.89	93.62	91.70	92.84	93.44	94.59	95.19	96.33	96.93	95.23	Bear			92.17 ~ 92.84	93.51 ~ 93.71	94.59	95.40 ~ 95.66	96.33 ~ 97.00
週足	Open	High	Low	Close	値幅/週	引け形態	真の高値	真の安値	予想高値	予想安値	予想高値	予想安値	LBOP	S2	S1	PP	R1	R2	HBOP	3-days AVG	Support Zone 2	Support Zone 1	BP	Resistance Zone 1	Resistance Zone 2			
2013/05/20 ~ 2013/05/24	102.58	103.73	100.68	101.09	305p	陰線引け	-	-	-	-	-	-	96.88	98.78	99.93	101.83	102.99	104.88	106.04				97.61 ~ 98.78	99.94 ~ 100.30	101.83	103.36 ~ 103.72	104.88 ~ 106.05	
2013/05/27 ~ 2013/05/31	101.24	102.52	100.22	100.45	230p	陰線引け	102.52	100.45	101.48	99.41	101.48	99.41	97.30	98.76	99.60	101.06	101.91	103.36	104.21				97.88 ~ 98.76	99.64 ~ 99.91	101.06	102.21 ~ 102.48	103.36 ~ 104.24	
2013/06/03 ~ 2013/06/07	100.55	100.72	95.00	97.51	571p	陰線引け	100.72	95.00	99.11	93.40	99.11	93.40	89.06	92.03	94.77	97.74	100.48	103.46	106.20	100.21	Bear			89.85 ~ 92.03	94.21 ~ 94.89	97.74	100.60 ~ 101.28	103.46 ~ 105.64
2013/06/10 ~ 2013/06/14	97.85	99.27	93.80	94.04	548p	陰線引け	99.27	93.80	96.66	91.18	96.66	91.18	86.65	90.22	92.13	95.70	97.61	101.18	103.09	98.17	Bear			88.13 ~ 90.22	92.32 ~ 92.96	95.70	98.44 ~ 99.09	101.18 ~ 103.27

EUR/JPY					Demark								Pivot					Fibonacci Zone										
					当日のOHLCLから計算される翌日の																							
日足	Open	High	Low	Close	値幅/日	引け形態	真の高値	真の安値	予想高値	予想安値	予想高値	予想安値	StopLoss	Support	Pivot	Resistance	StopLoss	3-days AVG	Support Zone 2	Support Zone 1	BP	Resistance Zone 1	Resistance Zone 2					
													LBOP	S2	S1	PP	R1	R2	HBOP									
2013/06/10	129.05	131.27	128.95	131.20	233p	陰線引け	-	-	-	-	-	-	127.34	128.14	129.67	130.47	132.00	132.80	134.33				127.25 ~ 128.14	129.03 ~ 129.31	130.47	131.64 ~ 131.91	132.80 ~ 133.69	
2013/06/11	131.20	131.21	127.10	127.83	411p	陰線引け	131.21	127.10	129.52	125.41	129.52	125.41	122.11	124.60	126.22	128.71	130.32	132.82	134.43				123.03 ~ 124.60	126.17 ~ 126.66	128.71	130.76 ~ 131.25	132.82 ~ 134.39	
2013/06/12	127.83	129.33	127.02	127.82	231p	陰線引け	129.33	127.02	128.57	126.27	128.57	126.27	124.48	125.75	126.79	128.06	129.09	130.36	131.40	129.08	Bear			124.87 ~ 125.75	126.63 ~ 126.90	128.06	129.21 ~ 129.48	130.36 ~ 131.24
2013/06/13	127.82	128.09	124.97	127.83	312p	陰線引け	128.09	124.97	129.52	126.40	129.52	126.40	122.72	123.85	125.84	126.97	128.96	130.08	132.08	127.91	Bear			122.66 ~ 123.85	125.04 ~ 125.41	126.97	128.52 ~ 128.89	130.08 ~ 131.27
2013/06/14	127.84	127.94	125.18	125.50	276p	陰線引け	127.94	125.18	126.72	123.96	126.72	123.96	121.71	123.45	124.47	126.21	127.23	128.96	129.99	127.08	Bear			122.39 ~ 123.45	124.50 ~ 124.83	126.21	127.58 ~ 127.91	128.96 ~ 130.02
週足	Open	High	Low	Close	値幅/週	引け形態	真の高値	真の安値	予想高値	予想安値	予想高値	予想安値	LBOP	S2	S1	PP	R1	R2	HBOP	3-days AVG	Support Zone 2	Support Zone 1	BP	Resistance Zone 1	Resistance Zone 2			
2013/05/20 ~ 2013/05/24	131.79	133.80	129.98	130.76	382p	陰線引け	-	-	-	-	-	-	125.41	127.69	129.22	131.51	133.04	135.33	136.86				126.23 ~ 127.69	129.15 ~ 129.60	131.51	133.42 ~ 133.87	135.33 ~ 136.79	
2013/05/27 ~ 2013/05/31	130.96	132.13	130.20	130.55	192p	陰線引け	132.13	130.20	131.34	129.19	131.34	129.19	127.87	129.03	129.79	130.96	131.71	132.88	133.64				128.30 ~ 129.03	129.77 ~ 130.00	130.96	131.92 ~ 132.15	132.88 ~ 133.62	
2013/06/03 ~ 2013/06/07	130.62	131.38	126.16	128.77	522p	陰線引け	131.38	126.16	130.08	124.86	130.08	124.86	120.95	123.55	126.16	128.77	131.38	133.99	136.60	130.41	Bear			121.56 ~ 123.55	125.55 ~ 126.16	128.77	131.38 ~ 131.99	133.99 ~ 135.98
2013/06/10 ~ 2013/06/14	129.05	131.27	124.97	125.50	630p	陰線引け	131.27	124.97	128.39	122.09	128.39	122.09	116.92	120.95	123.22	127.25	129.52	133.55	135.82	128.99	Bear			118.54 ~ 120.95	123.36 ~ 124.10	127.25	130.40 ~ 131.14	133.55 ~ 135.95

EUR/USD					Demark								Pivot					Fibonacci Zone										
					当日のOHLCLから計算される翌日の																							
日足	Open	High	Low	Close	値幅/日	引け形態	真の高値	真の安値	予想高値	予想安値	予想高値	予想安値	StopLoss	Support	Pivot	Resistance	StopLoss	3-days AVG	Support Zone 2	Support Zone 1	BP	Resistance Zone 1	Resistance Zone 2					
													LBOP	S2	S1	PP	R1	R2	HBOP									
2013/06/10	1.3198	1.3268	1.3177	1.3254	91p	陰線引け	-	-	-	-	-	-	1.3107	1.3142	1.3198	1.3233	1.3289	1.3324	1.3381				1.3107 ~ 1.3142	1.3177 ~ 1.3187	1.3233	1.3279 ~ 1.3289	1.3324 ~ 1.3359	
2013/06/11	1.3255	1.3317	1.3233	1.3311	82p	陰線引け	1.3317	1.3233	1.3356	1.3272	1.3356	1.3272	1.3173	1.3203	1.3257	1.3287	1.3341	1.3371	1.3425				1.3171 ~ 1.3203	1.3235 ~ 1.3245	1.3287	1.3329 ~ 1.3339	1.3371 ~ 1.3403	
2013/06/12	1.3311	1.3358	1.3266	1.3336	94p	陰線引け	1.3358	1.3266	1.3393	1.3301	1.3393	1.3301	1.3189	1.3228	1.3282	1.3320	1.3374	1.3413	1.3467	1.3280	Bull			1.3192 ~ 1.3228	1.3263 ~ 1.3274	1.3320	1.3366 ~ 1.3377	1.3413 ~ 1.3448
2013/06/13	1.3336	1.3389	1.3279	1.3372	110p	陰線引け	1.3389	1.3279	1.3435	1.3325	1.3435	1.3325	1.3194	1.3236	1.3304	1.3346	1.3414	1.3457	1.3524	1.3318	Bull			1.3194 ~ 1.3236	1.3278 ~ 1.3291	1.3346	1.3402 ~ 1.3415	1.3457 ~ 1.3499
2013/06/14	1.3372	1.3372	1.3295	1.3345	78p	陰線引け	1.3372	1.3295	1.3359	1.3281	1.3359	1.3281	1.3225	1.3260	1.3302	1.3337	1.3380	1.3415	1.3458	1.3335	Bull			1.3230 ~ 1.3260	1.3298 ~ 1.3298	1.3337	1.3402 ~ 1.3415	1.3458 ~ 1.3499
週足	Open	High	Low	Close	値幅/週	引け形態	真の高値	真の安値	予想高値	予想安値	予想高値	予想安値	LBOP	S2	S1	PP	R1	R2	HBOP	3-days AVG	Support Zone 2	Support Zone 1	BP	Resistance Zone 1	Resistance Zone 2			
2013/05/20 ~ 2013/05/24	1.2845	1.2997	1.2819	1.2935	178p	陰線引け	-	-	-	-	-	-	1.2659	1.2739	1.2837	1.2917	1.3015	1.3095	1.3193				1.2671 ~ 1.2739	1.2807 ~ 1.2828	1.2917	1.3006 ~ 1.3027	1.3095 ~ 1.3163	
2013/05/27 ~ 2013/05/31	1.2936	1.3061	1.2838	1.2966	223p	陰線引け	1.3061	1.2838	1.3149	1.2908	1.3149	1.2917	1.2646	1.2742	1.2869	1.2965	1.3092	1.3188	1.3315				1.2657 ~ 1.2742	1.2827 ~ 1.2853	1.2965	1.3076 ~ 1.3103	1.3188 ~ 1.3273	
2013/06/03 ~ 2013/06/07	1.2988	1.3306	1.2955	1.3218	350p	陰線引け	1.3306	1.2955	1.3437	1.3087	1.3437	1.3087	1.2663	1.2809	1.3014	1.3160	1.3364	1.3510	1.3714	1.3014	Bull			1.2676 ~ 1.2809	1.2943 ~ 1.2984	1.3160	1.3335 ~ 1.3376	1.3510 ~ 1.3644
2013/06/10 ~ 2013/06/14	1.3198	1.3389	1.3177	1.3345	212p	陰線引け	1.3389	1.3177	1.3473	1.3261	1.3473	1.3261	1.3006	1.3091	1.3218	1.3304	1.3430	1.3516	1.3642	1.3143	Bull			1.3010 ~ 1.3091	1.3172 ~ 1.3198	1.3304	1.3410 ~ 1.3435	1.3516 ~ 1.3597

GBP/JPY					Demark								Pivot					Fibonacci Zone						
					当日のOHLCLから計算される翌日の																			
日足	Open	High	Low	Close	値幅/日	引け形態	真の高値	真の安値	予想高値	予想安値	予想高値	予想安値	StopLoss	Support	Pivot	Resistance	StopLoss	3-days AVG	Support Zone 2	Support Zone 1	BP	Resistance Zone 1	Resistance Zone 2	
													LBOP	S2	S1	PP	R1	R2	HBOP					
2013/06/10																								

# IMM扱い8通貨/ダウ/日経/金/オイル/主要クロス円の過去5日及び過去5週の4本値

AUDUSD 5					CADUSD 5					CHFUSD 5				
Date	Open	High	Low	Close	Date	Open	High	Low	Close	Date	Open	High	Low	Close
2013/06/14	0.9652	0.9655	0.9567	0.9569	2013/06/14	0.9849	0.9865	0.9818	0.9833	2013/06/14	1.0847	1.0875	1.0788	1.0857
2013/06/13	0.9476	0.9663	0.9429	0.9652	2013/06/13	0.9798	0.9856	0.9780	0.9849	2013/06/13	1.0865	1.0953	1.0802	1.0847
2013/06/12	0.9437	0.9563	0.9416	0.9476	2013/06/12	0.9816	0.9848	0.9788	0.9797	2013/06/12	1.0816	1.0902	1.0769	1.0865
2013/06/11	0.9461	0.9466	0.9326	0.9437	2013/06/11	0.9812	0.9829	0.9756	0.9816	2013/06/11	1.0710	1.0842	1.0696	1.0816
2013/06/10	0.9398	0.9480	0.9398	0.9460	2013/06/10	0.9786	0.9835	0.9786	0.9812	2013/06/10	1.0684	1.0732	1.0619	1.0711

CNYUSD 10					EURUSD 5					GBPUSD 5				
Date	Open	High	Low	Close	Date	Open	High	Low	Close	Date	Open	High	Low	Close
2013/06/14	0.1629	0.1631	0.1629	0.1631	2013/06/14	1.3372	1.3372	1.3295	1.3345	2013/06/14	1.5717	1.5718	1.5616	1.5704
2013/06/13	0.1628	0.1629	0.1626	0.1629	2013/06/13	1.3336	1.3389	1.3279	1.3372	2013/06/13	1.5676	1.5737	1.5645	1.5716
2013/06/07	0.1632	0.1633	0.1628	0.1629	2013/06/12	1.3311	1.3358	1.3266	1.3336	2013/06/12	1.5645	1.5698	1.5632	1.5676
2013/06/06	0.1631	0.1632	0.1630	0.1630	2013/06/11	1.3255	1.3317	1.3233	1.3311	2013/06/11	1.5570	1.5651	1.5521	1.5645
2013/06/05	0.1632	0.1632	0.1631	0.1632	2013/06/10	1.3198	1.3268	1.3177	1.3254	2013/06/10	1.5531	1.5585	1.5495	1.5571

JPYUSD 5					MXNUSD 5					NZDUSD 5				
Date	Open	High	Low	Close	Date	Open	High	Low	Close	Date	Open	High	Low	Close
2013/06/14	1.0460	1.0639	1.0446	1.0634	2013/06/14	0.0792	0.0793	0.0786	0.0788	2013/06/14	0.8096	0.8136	0.8038	0.8058
2013/06/13	1.0433	1.0662	1.0422	1.0460	2013/06/13	0.0779	0.0788	0.0778	0.0788	2013/06/13	0.7950	0.8110	0.7895	0.8096
2013/06/12	1.0414	1.0511	1.0308	1.0433	2013/06/12	0.0783	0.0786	0.0774	0.0776	2013/06/12	0.7875	0.8023	0.7864	0.7951
2013/06/11	1.0103	1.0459	1.0103	1.0414	2013/06/11	0.0770	0.0782	0.0764	0.0780	2013/06/11	0.7898	0.7910	0.7760	0.7875
2013/06/10	1.0228	1.0234	1.0074	1.0103	2013/06/10	0.0783	0.0783	0.0775	0.0776	2013/06/10	0.7829	0.7922	0.7829	0.7898

Nikkei 225 - Japonia (NIKKEI) 5					(ドル建て終値)			出来高(*10000)		
Date	Open	High	Low	Close						
2013/06/14	12668.90	12900.65	12629.31	12686.52	133.35	278,200	376,850			
2013/06/13	13038.02	13050.11	12415.85	12445.38	132.10	240,880	326,460			
2013/06/12	13087.66	13332.72	12994.08	13289.32	137.20	205,510	299,390			
2013/06/11	13504.77	13584.31	13296.31	13317.62	135.66	260,160	354,490			
2013/06/10	13141.85	13514.20	13141.37	13514.20	137.37	241,390	325,190			
2013/06/14	13141.85	13584.31	12415.85	12686.52	(←週4本値)	(225銘柄計)	(東証一部合計)			

XAUUSD 5					
Date	Open	High	Low	Close	5
2013/06/14	1385.89	1392.10	1378.53	1390.32	0
2013/06/13	1388.25	1394.74	1374.57	1385.90	0
2013/06/12	1377.67	1394.45	1373.85	1388.75	0
2013/06/11	1385.50	1386.84	1365.97	1378.15	0
2013/06/10	1385.58	1388.75	1376.02	1386.35	0
2013/06/14	1385.58	1394.74	1365.97	1390.32	(週4本値)

Dow Jones Industrial - USA (DJIA) 5					
Date	Open	High	Low	Close	出来高(*1000)
2013/06/14	15178.08	15205.92	15044.80	15070.18	107,430
2013/06/13	14992.54	15202.27	14953.45	15176.08	104,480
2013/06/12	15130.39	15241.28	14981.21	14995.23	105,750
2013/06/11	15231.38	15251.07	15086.09	15122.02	101,600
2013/06/10	15247.81	15300.64	15211.25	15238.59	94,240
2013/06/14	15247.81	15300.64	14953.45	15070.18	(週4本値)

Historical Data by **Stooq**  
 Historical Data by **MarketNewsline**  
 (ダウと日経)  
 Arrangement by **FX\_勝てば官軍?**

Crude Light Oil 5						
Date	Open	High	Low	Close	Volume	5
2013/06/14	96.68	98.25	96.42	97.84	0	
2013/06/13	95.75	96.88	95.05	96.69	0	
2013/06/12	94.88	96.44	94.47	95.78	0	
2013/06/11	95.79	95.90	94.07	94.92	582901	
2013/06/10	96.11	96.24	95.27	95.78	593163	
2013/06/14	96.11	98.25	94.07	97.84	(週4本値)	

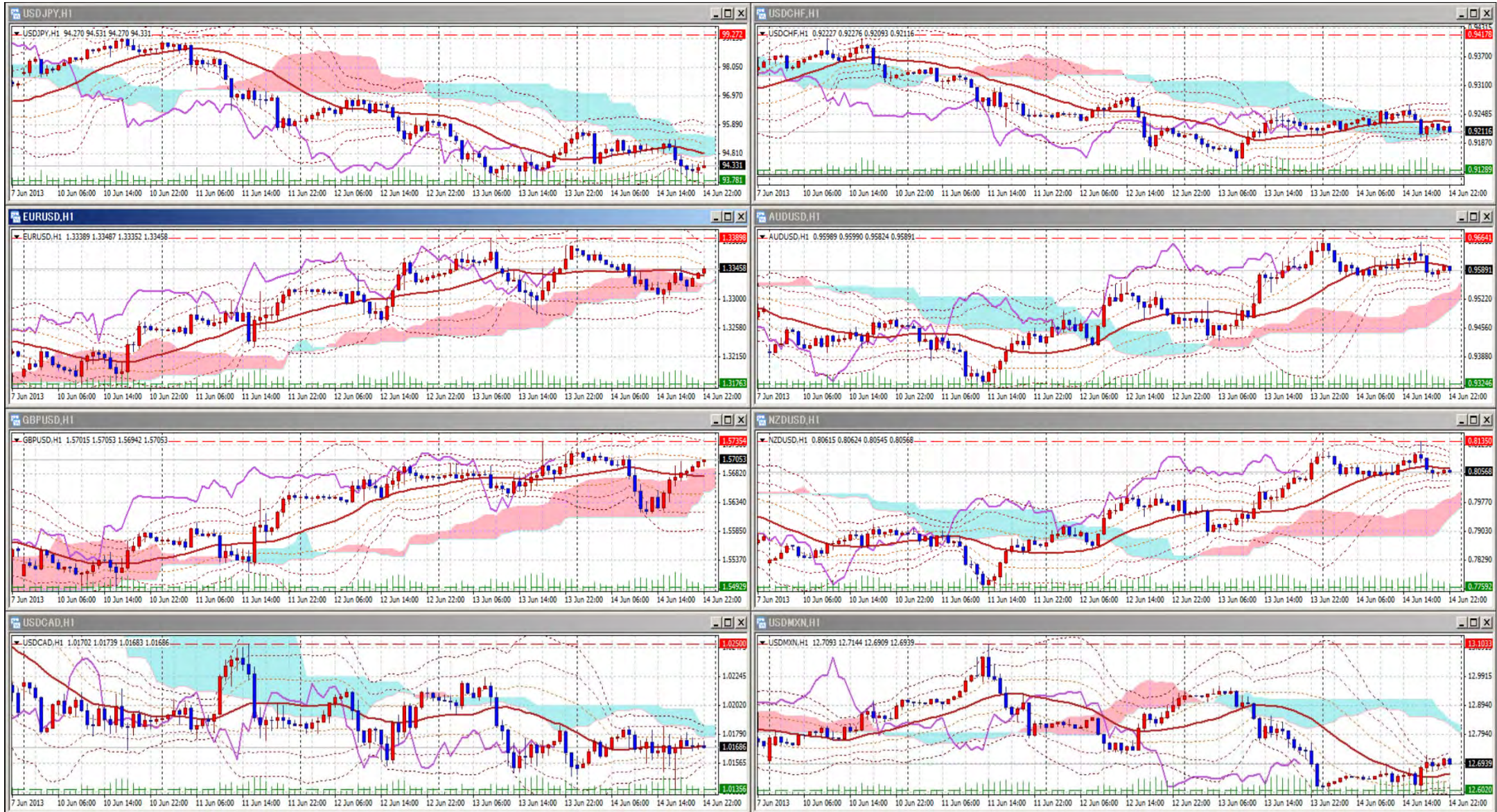
USDJPY 5					EURJPY 5					GBPJPY 5				
日付	始値	高値	安値	終値	日付	始値	高値	安値	終値	日付	始値	高値	安値	終値
2013/06/14	95.62	95.73	93.99	94.04	2013/06/14	127.84	127.94	125.18	125.50	2013/06/14	150.26	150.38	147.43	147.68
2013/06/13	95.85	95.96	93.80	95.60	2013/06/13	127.82	128.09	124.97	127.83	2013/06/13	150.25	150.54	147.12	150.24
2013/06/12	96.03	97.01	95.14	95.85	2013/06/12	127.83	129.33	127.02	127.82	2013/06/12	150.24	152.00	149.30	150.24
2013/06/11	98.99	98.99	95.60	96.03	2013/06/11	131.20	131.21	127.10	127.83	2013/06/11	154.12	154.14	149.38	150.24
2013/06/10	97.85	99.27	97.71	98.99	2013/06/10	129.05	131.27	128.95	131.20	2013/06/10	151.93	154.20	151.87	154.13

USDJPY Weekly 28					EURJPY Weekly 28					GBPJPY Weekly 28				
日付	始値	高値	安値	終値	日付	始値	高値	安値	終値	日付	始値	高値	安値	終値
2013/06/14	97.85	99.27	93.80	94.04	2013/06/14	129.05	131.27	124.97	125.50	2013/06/14	151.93	154.20	147.12	147.68
2013/06/07	100.55	100.72	95.00	97.51	2013/06/07	130.62	131.38	126.16	128.77	2013/06/07	152.79	153.79	148.24	151.80
2013/05/31	101.24	102.52	100.22	100.45	2013/05/31	130.96	132.13	130.20	130.55	2013/05/31	153.16	154.57	152.24	152.61
2013/05/24	102.58	103.73	100.68	101.09	2013/05/24	131.79	133.80	129.98	130.76	2013/05/24	155.84	156.54	151.80	152.91
2013/05/17	101.77	103.30	101.26	103.28	2013/05/17	132.08	132.74	131.17	132.47	2013/05/17	156.28	156.75	154.98	156.63



# 先週のIMM取り扱い対ドル8通貨チャート

2013/06/10 ~ 2013/06/14



Pivot Maker Ver 3.0 by FX\_勝てば官軍?

<http://fx.najirane.com>