

過去5日及び過去4週の4本値と各種ピボット

2013/09/09 ~ 2013/09/13

USD/JPY					Demark								Pivot					Fibonacci Zone									
日足	Open	High	Low	Close	値幅/日	引け形態	真の高値	真の安値	予想高値	予想安値	予想高値	予想安値	StopLoss	Support	Pivot	Resistance	StopLoss	3-days AVG	Support Zone 2	Support Zone 1	BP	Resistance Zone 1	Resistance Zone 2				
													LBOP	S2	S1	PP	R1	R2	HBOP								
2013/09/09	99.76	100.10	99.34	99.62	76p	除線引け	-	-	-	-	-	-	98.51	98.92	99.27	99.68	100.03	100.44	100.79				98.63 ~ 98.92	99.21 ~ 99.30	99.68	100.06 ~ 100.15	100.44 ~ 100.74
2013/09/10	99.62	100.46	99.47	100.39	98p	除線引け	100.46	99.47	100.91	99.93	100.91	99.93	98.77	99.12	99.75	100.10	100.74	101.09	101.72				98.75 ~ 99.12	99.50 ~ 99.61	100.10	100.60 ~ 100.71	101.09 ~ 101.46
2013/09/11	100.39	100.60	99.79	99.97	81p	除線引け	100.60	99.79	100.28	99.48	100.28	99.48	98.83	99.31	99.64	100.12	100.45	100.93	101.25	99.97	Bull		99.01 ~ 99.31	99.62 ~ 99.72	100.12	100.52 ~ 100.62	100.93 ~ 101.23
2013/09/12	99.96	99.99	99.01	99.49	97p	除線引け	99.99	99.01	99.74	98.77	99.74	98.77	98.04	98.52	99.01	99.50	99.98	100.47	100.95	99.91	Bear		98.15 ~ 98.52	98.90 ~ 99.01	99.50	99.98 ~ 100.10	100.47 ~ 100.84
2013/09/13	99.49	99.97	99.19	99.24	78p	除線引け	99.97	99.19	99.61	98.83	99.61	98.83	98.19	98.69	98.97	99.47	99.74	100.24	100.52	99.69	Bear		98.39 ~ 98.69	98.99 ~ 99.08	99.47	99.96 ~ 99.95	100.24 ~ 100.54
週足	Open	High	Low	Close	値幅/週	引け形態	真の高値	真の安値	予想高値	予想安値	予想高値	予想安値	LBOP	S2	S1	PP	R1	R2	HBOP	3-days AVG	Support Zone 2	Support Zone 1	BP	Resistance Zone 1	Resistance Zone 2		
2013/08/19 ~ 2013/08/23	97.63	99.15	96.91	98.67	224p	除線引け	-	-	-	-	-	-	95.10	96.00	97.33	98.24	99.57	100.48	101.81				95.15 ~ 96.00	96.86 ~ 97.12	98.24	99.36 ~ 99.63	100.48 ~ 101.34
2013/08/26 ~ 2013/08/30	98.61	98.84	96.81	98.17	204p	除線引け	98.84	96.91	98.51	96.58	98.51	96.47	95.00	95.90	97.04	97.94	99.07	99.98	101.11				95.13 ~ 95.90	96.68 ~ 96.92	97.94	98.96 ~ 99.20	99.98 ~ 100.75
2013/09/02 ~ 2013/09/06	98.35	100.22	98.27	99.06	195p	除線引け	100.22	98.17	100.66	98.61	100.61	98.67	96.20	97.24	98.15	99.18	100.09	101.13	102.04	98.45	Bull		96.49 ~ 97.24	97.98 ~ 98.21	99.18	100.16 ~ 100.39	101.13 ~ 101.87
2013/09/09 ~ 2013/09/13	99.76	100.60	99.01	99.24	159p	除線引け	100.60	99.01	99.92	98.33	99.92	98.33	97.05	98.03	98.64	99.62	100.22	101.20	101.81	98.91	Bull		97.42 ~ 98.03	98.64 ~ 98.82	99.62	100.41 ~ 100.60	101.20 ~ 101.81

EUR/JPY					Demark								Pivot					Fibonacci Zone									
日足	Open	High	Low	Close	値幅/日	引け形態	真の高値	真の安値	予想高値	予想安値	予想高値	予想安値	StopLoss	Support	Pivot	Resistance	StopLoss	3-days AVG	Support Zone 2	Support Zone 1	BP	Resistance Zone 1	Resistance Zone 2				
													LBOP	S2	S1	PP	R1	R2	HBOP								
2013/09/09	131.40	132.20	130.96	132.02	123p	除線引け	-	-	-	-	-	-	130.03	130.49	131.26	131.73	132.49	132.96	133.72				130.02 ~ 130.49	130.97 ~ 131.11	131.73	132.34 ~ 132.49	132.96 ~ 133.43
2013/09/10	132.03	133.28	131.92	133.16	137p	除線引け	133.28	131.92	133.90	132.54	133.90	132.54	130.93	131.42	132.29	132.79	133.66	134.15	135.02				130.90 ~ 131.42	131.94 ~ 132.10	132.79	133.47 ~ 133.63	134.15 ~ 134.67
2013/09/11	133.16	133.36	132.77	133.07	58p	除線引け	133.36	132.77	133.21	132.63	133.21	132.63	132.19	132.48	132.77	133.07	133.36	133.65	133.94	132.53	Bull		132.26 ~ 132.48	132.71 ~ 132.77	133.07	133.36 ~ 133.43	133.65 ~ 133.87
2013/09/12	133.07	133.09	131.72	132.32	138p	除線引け	133.09	131.72	132.71	131.33	132.71	131.33	130.28	131.00	131.66	132.38	133.03	133.75	134.41	132.74	Bear		130.47 ~ 131.00	131.52 ~ 131.69	132.38	133.06 ~ 133.23	133.75 ~ 134.28
2013/09/13	132.31	132.63	131.66	132.01	98p	除線引け	132.63	131.66	132.32	131.34	132.32	131.34	130.59	131.12	131.57	132.10	132.54	133.07	133.52	132.51	Bear		130.75 ~ 131.12	131.49 ~ 131.61	132.10	132.59 ~ 132.70	133.07 ~ 133.45
週足	Open	High	Low	Close	値幅/週	引け形態	真の高値	真の安値	予想高値	予想安値	予想高値	予想安値	LBOP	S2	S1	PP	R1	R2	HBOP	3-days AVG	Support Zone 2	Support Zone 1	BP	Resistance Zone 1	Resistance Zone 2		
2013/08/19 ~ 2013/08/23	130.18	132.42	129.29	132.06	313p	除線引け	-	-	-	-	-	-	126.97	128.13	130.09	131.26	133.22	134.38	136.35				126.93 ~ 128.13	129.32 ~ 129.69	131.26	132.82 ~ 133.19	133.38 ~ 135.58
2013/08/26 ~ 2013/08/30	131.96	132.30	129.31	129.74	300p	除線引け	132.30	129.29	131.02	128.01	131.02	128.03	125.60	127.46	128.60	130.45	131.59	133.45	134.59				126.31 ~ 127.46	128.60 ~ 128.95	130.45	131.95 ~ 132.30	133.45 ~ 134.59
2013/09/02 ~ 2013/09/06	129.93	132.13	129.77	130.51	236p	除線引け	132.13	129.74	132.51	130.12	132.50	130.14	127.12	128.45	129.48	130.80	131.83	133.16	134.19	130.84	Bear		127.55 ~ 128.45	129.35 ~ 129.63	130.80	131.98 ~ 132.26	133.16 ~ 134.06
2013/09/09 ~ 2013/09/13	131.40	133.36	130.96	132.01	239p	除線引け	133.36	130.51	134.11	131.26	133.88	131.49	128.47	129.72	130.86	132.11	133.26	134.50	135.65	131.12	Bull		128.80 ~ 129.72	130.63 ~ 130.91	132.11	133.31 ~ 133.59	134.50 ~ 135.42

EUR/USD					Demark								Pivot					Fibonacci Zone									
日足	Open	High	Low	Close	値幅/日	引け形態	真の高値	真の安値	予想高値	予想安値	予想高値	予想安値	StopLoss	Support	Pivot	Resistance	StopLoss	3-days AVG	Support Zone 2	Support Zone 1	BP	Resistance Zone 1	Resistance Zone 2				
													LBOP	S2	S1	PP	R1	R2	HBOP								
2013/09/09	1.3172	1.3280	1.3165	1.3253	116p	除線引け	-	-	-	-	-	-	1.3070	1.3117	1.3185	1.3233	1.3301	1.3348	1.3416				1.3073 ~ 1.3117	1.3161 ~ 1.3175	1.3233	1.3290 ~ 1.3304	1.3348 ~ 1.3392
2013/09/10	1.3253	1.3276	1.3230	1.3265	46p	除線引け	1.3276	1.3230	1.3293	1.3248	1.3293	1.3248	1.3193	1.3211	1.3238	1.3257	1.3284	1.3303	1.3330				1.3194 ~ 1.3211	1.3229 ~ 1.3234	1.3257	1.3280 ~ 1.3285	1.3303 ~ 1.3320
2013/09/11	1.3264	1.3324	1.3243	1.3311	81p	除線引け	1.3324	1.3243	1.3358	1.3277	1.3358	1.3277	1.3180	1.3212	1.3261	1.3293	1.3342	1.3374	1.3423	1.3261	Bull		1.3181 ~ 1.3212	1.3243 ~ 1.3252	1.3293	1.3333 ~ 1.3343	1.3374 ~ 1.3405
2013/09/12	1.3311	1.3324	1.3255	1.3299	69p	除線引け	1.3324	1.3255	1.3312	1.3243	1.3312	1.3243	1.3193	1.3224	1.3262	1.3293	1.3331	1.3362	1.3400	1.3281	Bull		1.3198 ~ 1.3224	1.3250 ~ 1.3258	1.3293	1.3327 ~ 1.3336	1.3362 ~ 1.3388
2013/09/13	1.3299	1.3321	1.3254	1.3302	67p	除線引け	1.3321	1.3254	1.3345	1.3278	1.3345	1.3278	1.3197	1.3225	1.3264	1.3292	1.3331	1.3359	1.3397	1.3293	Bear		1.3200 ~ 1.3225	1.3251 ~ 1.3259	1.3292	1.3326 ~ 1.3334	1.3359 ~ 1.3385
週足	Open	High	Low	Close	値幅/週	引け形態	真の高値	真の安値	予想高値	予想安値	予想高値	予想安値	LBOP	S2	S1	PP	R1	R2	HBOP	3-days AVG	Support Zone 2	Support Zone 1	BP	Resistance Zone 1	Resistance Zone 2		
2013/08/19 ~ 2013/08/23	1.3334	1.3451	1.3298	1.3384	153p	除線引け	-	-	-	-	-	-	1.3151	1.3225	1.3305	1.3378	1.3458	1.3531	1.3611				1.3166 ~ 1.3225	1.3283 ~ 1.3301	1.3378	1.3455 ~ 1.3473	1.3531 ~ 1.3590
2013/08/26 ~ 2013/08/30	1.3384	1.3398	1.3174	1.3216	224p	除線引け	1.3398	1.3216	1.3307	1.3125	1.3307	1.3083	1.2903	1.3039	1.3127	1.3263	1.3351	1.3487	1.3575				1.2953 ~ 1.3039	1.3124 ~ 1.3151	1.3263	1.3375 ~ 1.3401	1.3487 ~ 1.3572
2013/09/02 ~ 2013/09/06	1.3213	1.3226	1.3105	1.3175	122p	除線引け	1.3226	1.3105	1.3201	1.3079	1.3201	1.3079	1.2989	1.3047	1.3111	1.3169	1.3232	1.3290	1.3354	1.3270	Bear		1.3001 ~ 1.3047	1.3093 ~ 1.3108	1.3169	1.3229 ~ 1.3244	1.3290 ~ 1.3337
2013/09/09 ~ 2013/09/13	1.3172	1.3324	1.3165	1.3302	160p	除線引け	1.3324	1.3165	1.3393	1.3233	1.3393	1.3233	1.3043	1.3104	1.3203	1.3264	1.3363	1.3423	1.3522	1.3232	Bull		1.3043 ~ 1.3104	1.3165 ~ 1.3184	1.3264	1.3343 ~ 1.3362	1.3423 ~ 1.3484

GBP/JPY					Demark								Pivot					Fibonacci Zone								
日足	Open	High	Low	Close	値幅/日	引け形態	真の高値	真の安値	予想高値	予想安値	予想高値	予想安値	StopLoss	Support	Pivot	Resistance	StopLoss	3-days AVG	Support Zone 2	Support Zone 1	BP	Resistance Zone 1	Resistance Zone 2			
													LBOP	S2	S1	PP	R1	R2	HBOP							
2013/09/09	155.88	156.63	155.50	156.32	113p	除線引け	-	-	-	-	-	-	154.54	155.02	155.67	156.15	156.80	157.28	157.93				154.59 ~ 155.02	155.45 ~ 155.59	156.15	156.71 ~ 1

IMM扱い8通貨/ダウ/日経/金/オイル/主要クロス円の過去5日及び過去5週の4本値

AUDUSD					CADUSD					CHFUSD				
Date	Open	High	Low	Close	Date	Open	High	Low	Close	Date	Open	High	Low	Close
2013/09/13	0.9262	0.9270	0.9224	0.9248	2013/09/13	0.9685	0.9689	0.9662	0.9665	2013/09/13	1.0750	1.0775	1.0706	1.0761
2013/09/12	0.9322	0.9353	0.9225	0.9262	2013/09/12	0.9696	0.9704	0.9676	0.9685	2013/09/12	1.0747	1.0785	1.0714	1.0750
2013/09/11	0.9308	0.9338	0.9277	0.9322	2013/09/11	0.9663	0.9699	0.9648	0.9697	2013/09/11	1.0698	1.0771	1.0673	1.0747
2013/09/10	0.9226	0.9319	0.9216	0.9308	2013/09/10	0.9644	0.9681	0.9635	0.9663	2013/09/10	1.0729	1.0734	1.0678	1.0697
2013/09/09	0.9198	0.9241	0.9167	0.9226	2013/09/09	0.9614	0.9654	0.9599	0.9644	2013/09/09	1.0660	1.0752	1.0648	1.0728

CNYUSD					EURUSD					GBPUSD				
Date	Open	High	Low	Close	Date	Open	High	Low	Close	Date	Open	High	Low	Close
2013/09/13	0.1637	0.1637	0.1636	0.1636	2013/09/13	1.3299	1.3321	1.3254	1.3302	2013/09/13	1.5806	1.5884	1.5776	1.5873
2013/09/12	0.1637	0.1637	0.1637	0.1637	2013/09/12	1.3311	1.3324	1.3255	1.3299	2013/09/12	1.5822	1.5838	1.5774	1.5806
2013/09/11	0.1636	0.1637	0.1636	0.1637	2013/09/11	1.3264	1.3324	1.3243	1.3311	2013/09/11	1.5731	1.5828	1.5718	1.5821
2013/09/10	0.1637	0.1637	0.1636	0.1636	2013/09/10	1.3253	1.3276	1.3230	1.3265	2013/09/10	1.5693	1.5744	1.5685	1.5732
2013/09/09	0.1636	0.1637	0.1636	0.1637	2013/09/09	1.3172	1.3280	1.3165	1.3253	2013/09/09	1.5627	1.5732	1.5624	1.5693

JPYUSD					MXNUSD					NZDUSD				
Date	Open	High	Low	Close	Date	Open	High	Low	Close	Date	Open	High	Low	Close
2013/09/13	1.0051	1.0081	1.0003	1.0077	2013/09/13	0.0763	0.0768	0.0762	0.0767	2013/09/13	0.8135	0.8169	0.8095	0.8136
2013/09/12	1.0003	1.0100	1.0002	1.0051	2013/09/12	0.0763	0.0767	0.0762	0.0764	2013/09/12	0.8122	0.8157	0.8110	0.8135
2013/09/11	0.9962	1.0020	0.9940	1.0003	2013/09/11	0.0765	0.0768	0.0762	0.0767	2013/09/11	0.8064	0.8135	0.8037	0.8123
2013/09/10	1.0039	1.0052	0.9955	0.9962	2013/09/10	0.0764	0.0766	0.0760	0.0764	2013/09/10	0.8016	0.8075	0.8006	0.8064
2013/09/09	1.0025	1.0067	0.9990	1.0039	2013/09/09	0.0759	0.0763	0.0757	0.0763	2013/09/09	0.8001	0.8031	0.7961	0.8016

Nikkei 225 - Japonia (NIKKEI)					(ドル建て終値)			出来高(*10000)		
Date	Open	High	Low	Close						
2013/09/13	14316.70	14439.93	14233.12	14404.67	144.49	180,670	366,160			
2013/09/12	14397.90	14455.37	14321.57	14387.27	144.52	118,410	259,540			
2013/09/11	14511.74	14561.46	14422.72	14425.07	143.83	170,000	344,320			
2013/09/10	14318.72	14441.81	14296.78	14423.36	144.15	209,900	423,080			
2013/09/09	14141.67	14251.46	14117.68	14205.23	142.68	173,550	293,760			
2013/09/13	14141.67	14561.46	14117.68	14404.67	(←週4本値)	(225銘柄計)	(東証一部合計)			

XAUUSD					
Date	Open	High	Low	Close	5
2013/09/13	1325.03	1330.73	1304.75	1323.42	0
2013/09/12	1364.04	1365.62	1320.63	1321.51	0
2013/09/11	1365.24	1368.26	1356.50	1364.99	0
2013/09/10	1386.36	1387.16	1357.91	1363.50	0
2013/09/09	1388.01	1391.86	1381.91	1386.82	0
2013/09/13	1388.01	1391.86	1304.75	1323.42	(週4本値)

Dow Jones Industrial - USA (DJIA)					
Date	Open	High	Low	Close	出来高(*1000)
2013/09/13	15312.86	15380.97	15312.86	15357.78	90,890
2013/09/12	15327.14	15345.32	15283.26	15300.64	99,760
2013/09/11	15194.13	15326.60	15194.13	15326.60	102,090
2013/09/10	15067.23	15192.13	15067.23	15191.06	103,200
2013/09/09	14927.19	15088.41	14927.19	15063.12	90,660
2013/09/13	14927.19	15380.97	14927.19	15357.78	(週4本値)

Historical Data by **Stooq**
 Historical Data by **MarketNewsline**
 Arrangement by **FX_勝てば官軍?**

Crude Light Oil					
Date	Open	High	Low	Close	Volume
2013/09/13	108.62	108.73	107.24	108.53	0
2013/09/12	107.77	109.15	107.31	108.72	0
2013/09/11	107.33	108.06	106.58	107.73	0
2013/09/10	108.90	108.94	106.44	107.22	672581
2013/09/09	109.92	110.44	108.79	108.94	606889
2013/09/13	109.92	110.44	106.44	108.53	(週4本値)

USDJPY					EURJPY					GBPJPY				
日付	始値	高値	安値	終値	日付	始値	高値	安値	終値	日付	始値	高値	安値	終値
2013/09/13	99.49	99.97	99.19	99.24	2013/09/13	132.31	132.63	131.66	132.01	2013/09/13	157.26	157.95	157.18	157.53
2013/09/12	99.96	99.99	99.01	99.49	2013/09/12	133.07	133.09	131.72	132.32	2013/09/12	158.16	158.20	156.69	157.25
2013/09/11	100.39	100.60	99.79	99.97	2013/09/11	133.16	133.36	132.77	133.07	2013/09/11	157.92	158.53	157.50	158.16
2013/09/10	99.62	100.46	99.47	100.39	2013/09/10	132.03	133.28	131.92	133.16	2013/09/10	156.32	158.04	156.16	157.92
2013/09/09	99.76	100.10	99.34	99.62	2013/09/09	131.40	132.20	130.96	132.02	2013/09/09	155.88	156.63	155.50	156.32

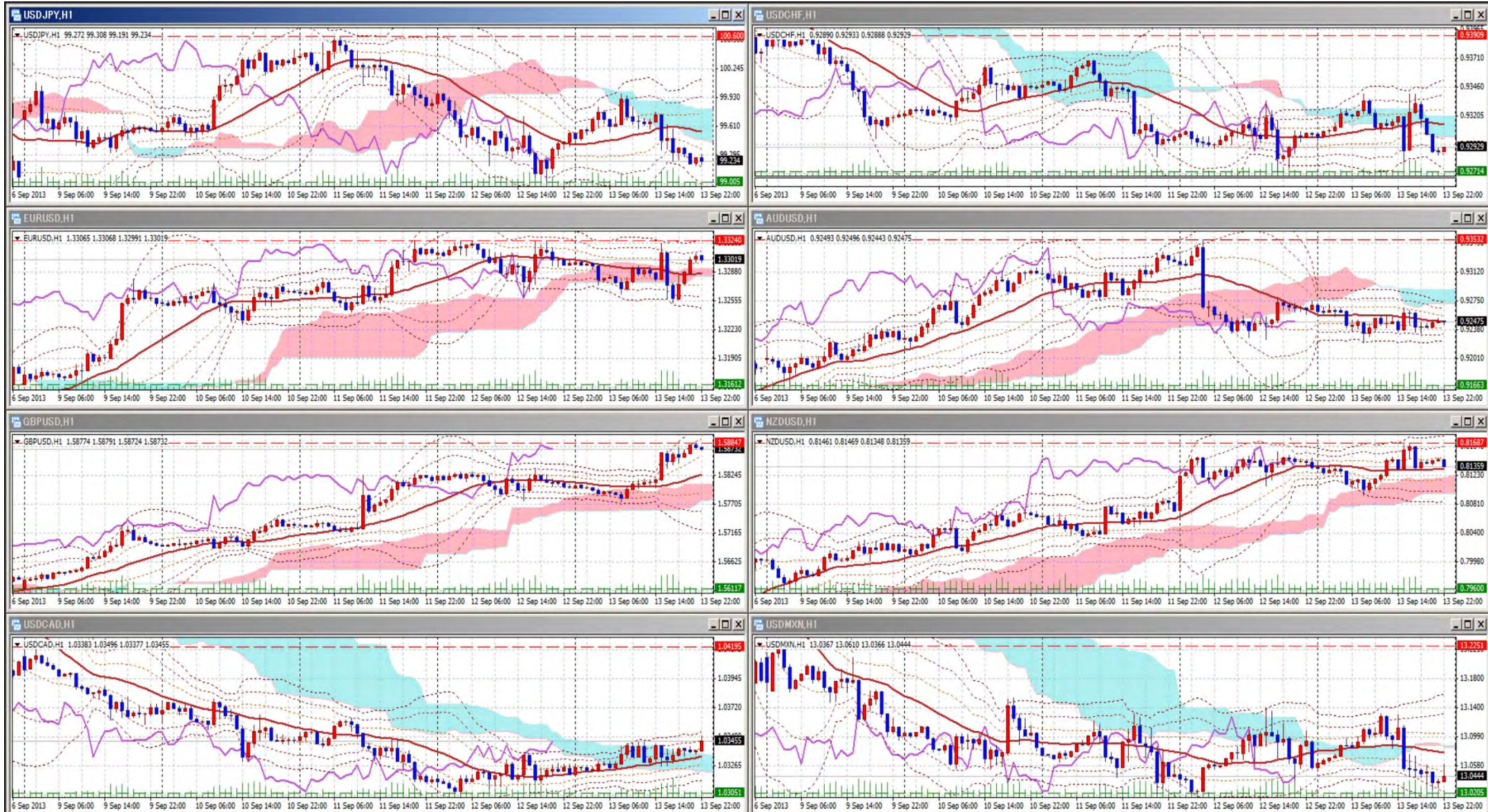
USDJPY Weekly					EURJPY Weekly					GBPJPY Weekly				
日付	始値	高値	安値	終値	日付	始値	高値	安値	終値	日付	始値	高値	安値	終値
2013/09/13	99.76	100.60	99.01	99.24	2013/09/13	131.40	133.36	130.96	132.01	2013/09/13	155.88	158.53	155.50	157.53
2013/09/06	98.35	100.22	98.27	99.06	2013/09/06	129.93	132.13	129.77	130.51	2013/09/06	152.62	156.42	152.37	154.83
2013/08/30	98.61	98.84	96.81	98.17	2013/08/30	131.96	132.30	129.31	129.74	2013/08/30	153.58	153.96	150.47	152.12
2013/08/23	97.63	99.15	96.91	98.67	2013/08/23	130.18	132.42	129.29	132.06	2013/08/23	152.58	154.66	151.73	153.73
2013/08/16	96.31	98.65	95.92	97.53	2013/08/16	128.44	130.71	127.97	130.04	2013/08/16	149.28	153.21	148.86	152.41

先週のIMM取り扱い対ドル8通貨チャート

※ 赤点線は週最高値/青天線は週最低値、BB中心線はSMA21

2013/09/09 ~ 2013/09/13

Chart by FXDD Malta on MetaTrader4



Pivot Maker Ver 3.0 by FX_勝てば官軍?

<http://fx.najirane.com>