

過去5日及び過去4週の4本値と各種ピボット

2013/10/07 ~ 2013/10/11

USD/JPY					Demark								Pivot					Fibonacci Zone											
					当日のOHLCLから計算される翌日の																								
日足	Open	High	Low	Close	値幅/日	引け形態	真の高値	真の安値	予想高値	予想安値	予想高値	予想安値	StopLoss	Support	Pivot	Resistance	StopLoss	3-days AVG	Support Zone 2	Support Zone 1	BP	Resistance Zone 1	Resistance Zone 2						
													LBOP	S2	S1	PP	R1	R2	HBOP										
2013/10/07	97.28	97.32	96.56	96.69	76p	陰線引け	-	-	-	-	-	-	95.63	96.09	96.39	96.86	97.15	97.62	97.92				95.80 ~ 96.09	96.38 ~ 96.48	96.86	97.24 ~ 97.33	97.62 ~ 97.91		
2013/10/08	96.70	97.25	96.59	96.88	65p	陽線引け	97.25	96.59	97.39	96.74	97.39	96.74	95.92	96.26	96.57	96.91	97.22	97.56	97.87				96.01 ~ 96.26	96.50 ~ 96.58	96.91	97.23 ~ 97.31	97.56 ~ 97.81		
2013/10/09	96.88	97.64	96.82	97.37	81p	陽線引け	97.64	96.82	97.91	97.09	97.91	97.09	96.10	96.46	96.91	97.28	97.73	98.09	98.54	97.01	Bull			96.15 ~ 96.46	96.77 ~ 96.87	97.28	97.68 ~ 97.78	98.09 ~ 98.40	
2013/10/10	97.37	98.33	97.35	98.27	98p	陽線引け	98.33	97.35	98.79	97.81	98.79	97.81	96.66	97.00	97.64	97.98	98.62	98.97	99.60	97.39	Bull			96.63 ~ 97.00	97.38 ~ 97.49	97.98	98.47 ~ 98.59	98.97 ~ 99.34	
2013/10/11	98.28	98.57	97.92	98.55	65p	陰線引け	98.57	97.92	98.88	98.23	98.88	98.23	97.47	97.69	98.12	98.34	98.77	99.00	99.42	97.87	Bull			97.44 ~ 97.69	97.94 ~ 98.02	98.34	98.67 ~ 98.75	99.00 ~ 99.25	
週足	Open	High	Low	Close	値幅/週	引け形態	真の高値	真の安値	予想高値	予想安値	予想高値	予想安値	LBOP	S2	S1	PP	R1	R2	HBOP	3-days AVG	Support Zone 2	Support Zone 1	BP	Resistance Zone 1	Resistance Zone 2				
2013/09/16 ~ 2013/09/20	98.81	99.66	97.76	99.33	190p	陽線引け	-	-	-	-	-	-	96.27	97.01	98.17	98.92	100.07	100.82	101.98					96.29 ~ 97.01	97.74 ~ 97.96	98.92	99.87 ~ 100.09	100.82 ~ 101.54	
2013/09/23 ~ 2013/09/27	99.26	99.35	98.09	98.23	126p	陰線引け	99.35	97.76	98.79	97.20	98.79	97.53	96.50	97.30	97.76	98.56	99.03	99.82	100.29					96.81 ~ 97.30	97.78 ~ 97.93	98.56	99.19 ~ 99.34	99.82 ~ 100.30	
2013/09/30 ~ 2013/10/04	97.78	98.72	96.93	97.45	179p	陰線引け	98.72	96.93	98.08	96.30	98.08	96.30	94.89	95.91	96.68	97.70	98.47	99.49	100.26	98.39	Bear				95.23 ~ 95.91	96.59 ~ 96.80	97.70	98.59 ~ 98.80	99.49 ~ 100.17
2013/10/07 ~ 2013/10/11	97.28	98.57	96.56	98.55	201p	陽線引け	98.57	96.56	99.56	97.55	99.56	97.55	95.21	95.88	97.21	97.89	99.22	99.90	101.23	98.05	Bear				95.12 ~ 95.88	96.65 ~ 96.89	97.89	98.90 ~ 99.13	99.90 ~ 100.67

EUR/JPY					Demark								Pivot					Fibonacci Zone											
					当日のOHLCLから計算される翌日の																								
日足	Open	High	Low	Close	値幅/日	引け形態	真の高値	真の安値	予想高値	予想安値	予想高値	予想安値	StopLoss	Support	Pivot	Resistance	StopLoss	3-days AVG	Support Zone 2	Support Zone 1	BP	Resistance Zone 1	Resistance Zone 2						
													LBOP	S2	S1	PP	R1	R2	HBOP										
2013/10/07	131.93	132.04	131.10	131.27	94p	陰線引け	-	-	-	-	-	-	129.95	130.52	130.90	131.47	131.84	132.41	132.79					130.16 ~ 130.52	130.88 ~ 131.00	131.47	131.94 ~ 132.05	132.41 ~ 132.77	
2013/10/08	131.27	132.03	131.16	131.50	86p	陽線引け	132.03	131.16	132.19	131.33	132.19	131.33	130.23	130.70	131.10	131.56	131.96	132.42	132.82					130.37 ~ 130.70	131.03 ~ 131.13	131.56	131.99 ~ 132.09	132.42 ~ 132.75	
2013/10/09	131.50	132.17	131.23	131.67	94p	陽線引け	132.17	131.23	132.39	131.45	132.39	131.45	130.28	130.75	131.21	131.69	132.15	132.62	133.08	131.57	Bull				130.40 ~ 130.75	131.11 ~ 131.22	131.69	132.16 ~ 132.27	132.62 ~ 132.98
2013/10/10	131.66	132.96	131.65	132.92	131p	陽線引け	132.96	131.65	133.59	132.28	133.59	132.28	130.75	131.20	132.06	132.51	133.37	133.82	134.68	131.92	Bull				130.70 ~ 131.20	131.70 ~ 131.85	132.51	133.16 ~ 133.32	133.82 ~ 134.32
2013/10/11	132.93	133.59	132.44	133.54	114p	陽線引け	133.59	132.44	134.13	132.99	134.13	132.99	131.65	132.05	132.79	133.19	133.93	134.33	135.08	132.46	Bull				131.61 ~ 132.05	132.48 ~ 132.62	133.19	133.76 ~ 133.89	134.33 ~ 134.77
週足	Open	High	Low	Close	値幅/週	引け形態	真の高値	真の安値	予想高値	予想安値	予想高値	予想安値	LBOP	S2	S1	PP	R1	R2	HBOP	3-days AVG	Support Zone 2	Support Zone 1	BP	Resistance Zone 1	Resistance Zone 2				
2013/09/16 ~ 2013/09/20	132.11	134.94	131.86	134.30	308p	陽線引け	-	-	-	-	-	-	129.38	130.62	132.46	133.70	135.54	136.78	138.62					129.44 ~ 130.62	131.80 ~ 132.16	133.70	135.24 ~ 135.60	136.78 ~ 137.96	
2013/09/23 ~ 2013/09/27	134.32	134.42	132.62	132.82	179p	陰線引け	134.42	132.62	133.62	131.06	133.62	131.82	130.36	131.49	132.15	133.29	133.95	135.08	135.74					130.81 ~ 131.49	132.18 ~ 132.39	133.29	134.18 ~ 134.40	135.08 ~ 135.77	
2013/09/30 ~ 2013/10/04	131.80	133.46	131.43	132.08	204p	陽線引け	133.46	131.43	133.79	131.75	133.79	131.75	129.14	130.28	131.18	132.32	133.22	134.36	135.26	133.10	Bear				129.50 ~ 130.28	131.06 ~ 131.30	132.32	133.34 ~ 133.58	134.36 ~ 135.14
2013/10/07 ~ 2013/10/11	131.93	133.59	131.10	133.54	249p	陽線引け	133.59	131.10	134.81	132.32	134.81	132.32	129.40	130.25	131.89	132.74	134.38	135.23	136.87	132.78	Bear				129.30 ~ 130.25	131.20 ~ 131.49	132.74	133.98 ~ 134.28	135.23 ~ 136.18

EUR/USD					Demark								Pivot					Fibonacci Zone											
					当日のOHLCLから計算される翌日の																								
日足	Open	High	Low	Close	値幅/日	引け形態	真の高値	真の安値	予想高値	予想安値	予想高値	予想安値	StopLoss	Support	Pivot	Resistance	StopLoss	3-days AVG	Support Zone 2	Support Zone 1	BP	Resistance Zone 1	Resistance Zone 2						
													LBOP	S2	S1	PP	R1	R2	HBOP										
2013/10/07	1.3562	1.3591	1.3542	1.3577	48p	陰線引け	-	-	-	-	-	-	1.3501	1.3522	1.3549	1.3570	1.3597	1.3618	1.3646					1.3503 ~ 1.3522	1.3540 ~ 1.3546	1.3570	1.3594 ~ 1.3600	1.3618 ~ 1.3637	
2013/10/08	1.3577	1.3607	1.3557	1.3573	50p	陰線引け	1.3607	1.3557	1.3590	1.3540	1.3590	1.3540	1.3501	1.3529	1.3551	1.3579	1.3601	1.3629	1.3651					1.3510 ~ 1.3529	1.3548 ~ 1.3554	1.3579	1.3604 ~ 1.3610	1.3629 ~ 1.3648	
2013/10/09	1.3573	1.3604	1.3486	1.3522	118p	陰線引け	1.3604	1.3486	1.3563	1.3445	1.3563	1.3445	1.3352	1.3419	1.3471	1.3538	1.3589	1.3656	1.3708	1.3562	Bear				1.3374 ~ 1.3419	1.3464 ~ 1.3478	1.3538	1.3597 ~ 1.3611	1.3656 ~ 1.3701
2013/10/10	1.3522	1.3544	1.3487	1.3525	57p	陰線引け	1.3544	1.3487	1.3563	1.3506	1.3563	1.3506	1.3436	1.3461	1.3493	1.3519	1.3551	1.3576	1.3608	1.3545	Bull				1.3439 ~ 1.3461	1.3483 ~ 1.3490	1.3519	1.3547 ~ 1.3554	1.3576 ~ 1.3598
2013/10/11	1.3526	1.3581	1.3519	1.3551	62p	陽線引け	1.3581	1.3519	1.3597	1.3535	1.3597	1.3535	1.3458	1.3489	1.3520	1.3550	1.3582	1.3612	1.3643	1.3536	Bull				1.3465 ~ 1.3489	1.3512 ~ 1.3520	1.3550	1.3581 ~ 1.3589	1.3612 ~ 1.3636
週足	Open	High	Low	Close	値幅/週	引け形態	真の高値	真の安値	予想高値	予想安値	予想高値	予想安値	LBOP	S2	S1	PP	R1	R2	HBOP	3-days AVG	Support Zone 2	Support Zone 1	BP	Resistance Zone 1	Resistance Zone 2				
2013/09/16 ~ 2013/09/20	1.3369	1.3568	1.3325	1.3520	243p	陽線引け	-	-	-	-	-	-	1.3131	1.3228	1.3374	1.3471	1.3617	1.3714	1.3860					1.3135 ~ 1.3228	1.3321 ~ 1.3350	1.3471	1.3593 ~ 1.3621	1.3714 ~ 1.3807	
2013/09/23 ~ 2013/09/27	1.3531	1.3564	1.3461	1.3521	103p	陰線引け	1.3564	1.3461	1.3543	1.3304	1.3543	1.3440	1.3364	1.3413	1.3467	1.3516	1.3570	1.3618	1.3672					1.3374 ~ 1.3413	1.3452 ~ 1.3464	1.3516	1.3567 ~ 1.3579	1.3618 ~ 1.3657	
2013/09/30 ~ 2013/10/04	1.3481	1.3645	1.3478	1.3553	167p	陽線引け	1.3645	1.3478	1.3683	1.3515	1.3683	1.3515	1.3305	1.3391	1.3472	1.3559	1.3639	1.3726	1.3806	1.3515	Bull				1.3328 ~ 1.3391	1.3455 ~ 1.3475	1.3559	1.3642 ~ 1.3662	1.3726 ~ 1.3789
2013/10/07 ~ 2013/10/11	1.3562	1.3607	1.3486	1.3551	121p	陽線引け	1.3607	1.3486	1.3579	1.3458	1.3579	1.3458	1.3368	1.3427	1.3489	1.3548	1.3610	1.3669	1.3730	1.3541	Bull				1.3381 ~ 1.3427	1.3473 ~ 1.3487	1.3548	1.3608 ~ 1.3622	1.3669 ~ 1.3715

GBP/JPY					Demark								Pivot					Fibonacci Zone					
					当日のOHLCLから計算される翌日の																		
日足	Open	High	Low	Close	値幅/日	引け形態	真の高値	真の安値	予想高値	予想安値	予想高値	予想安値	StopLoss	Support	Pivot	Resistance	StopLoss	3-days AVG	Support Zone 2	Support Zone 1	BP	Resistance Zone 1	Resistance Zone 2
													LBOP	S2	S1	PP	R1	R2	HBOP				

IMM扱い通貨/ダウ/日経/金/オイル/主要クロス円の過去5日及び過去5週の4本値

AUDUSD 5					CADUSD 5					CHFUSD 5				
Date	Open	High	Low	Close	Date	Open	High	Low	Close	Date	Open	High	Low	Close
2013/10/11	0.9461	0.9484	0.9435	0.9468	2013/10/11	0.9618	0.9671	0.9605	0.9659	2013/10/11	1.0977	1.1026	1.0952	1.0973
2013/10/10	0.9448	0.9470	0.9389	0.9461	2013/10/10	0.9624	0.9642	0.9598	0.9618	2013/10/10	1.0990	1.1011	1.0953	1.0977
2013/10/09	0.9420	0.9464	0.9413	0.9447	2013/10/09	0.9645	0.9660	0.9609	0.9624	2013/10/09	1.1063	1.1093	1.0957	1.0990
2013/10/08	0.9424	0.9484	0.9411	0.9420	2013/10/08	0.9697	0.9702	0.9641	0.9645	2013/10/08	1.1072	1.1084	1.1031	1.1063
2013/10/07	0.9431	0.9449	0.9388	0.9423	2013/10/07	0.9713	0.9713	0.9678	0.9697	2013/10/07	1.1032	1.1092	1.1031	1.1070

CNYUSD 12					EURUSD 5					GBPUSD 5				
Date	Open	High	Low	Close	Date	Open	High	Low	Close	Date	Open	High	Low	Close
2013/10/11	0.1638	0.1638	0.1637	0.1638	2013/10/11	1.3526	1.3581	1.3519	1.3551	2013/10/11	1.5971	1.6001	1.5924	1.5957
2013/10/10	0.1636	0.1637	0.1635	0.1637	2013/10/10	1.3522	1.3544	1.3487	1.3525	2013/10/10	1.5952	1.5978	1.5914	1.5971
2013/10/09	0.1636	0.1636	0.1636	0.1636	2013/10/09	1.3573	1.3604	1.3486	1.3522	2013/10/09	1.6082	1.6121	1.5916	1.5951
2013/10/08	0.1637	0.1637	0.1636	0.1637	2013/10/08	1.3577	1.3607	1.3557	1.3573	2013/10/08	1.6088	1.6124	1.6018	1.6081
2013/09/30	0.1635	0.1635	0.1634	0.1635	2013/10/07	1.3562	1.3591	1.3542	1.3577	2013/10/07	1.6025	1.6099	1.6024	1.6088

JPYUSD 5					MXNUSD 5					NZDUSD 5				
Date	Open	High	Low	Close	Date	Open	High	Low	Close	Date	Open	High	Low	Close
2013/10/11	1.0175	1.0213	1.0146	1.0148	2013/10/11	0.0766	0.0771	0.0762	0.0770	2013/10/11	0.8287	0.8353	0.8266	0.8320
2013/10/10	1.0271	1.0272	1.0172	1.0176	2013/10/10	0.0762	0.0766	0.0761	0.0765	2013/10/10	0.8300	0.8308	0.8231	0.8287
2013/10/09	1.0322	1.0328	1.0242	1.0270	2013/10/09	0.0759	0.0760	0.0756	0.0758	2013/10/09	0.8284	0.8319	0.8272	0.8300
2013/10/08	1.0343	1.0353	1.0283	1.0322	2013/10/08	0.0763	0.0766	0.0758	0.0758	2013/10/08	0.8297	0.8332	0.8269	0.8283
2013/10/07	1.0279	1.0356	1.0275	1.0343	2013/10/07	0.0760	0.0765	0.0759	0.0763	2013/10/07	0.8318	0.8336	0.8270	0.8297

Nikkei 225 - Japonia (NIKKEI) 5					(ドル建て終値)		出来高(*10000)	
Date	Open	High	Low	Close				
2013/10/11	14376.89	14447.87	14320.30	14404.74	146.57	169,920	247,730	
2013/10/10	14097.62	14200.31	14077.03	14194.71	145.27	143,210	225,100	
2013/10/09	13789.89	14037.84	13751.85	14037.84	144.26	162,100	241,790	
2013/10/08	13794.74	13929.64	13748.94	13894.61	143.13	163,680	264,680	
2013/10/07	14057.79	14073.23	13841.93	13853.32	142.94	146,100	233,150	
2013/10/11	14057.79	14447.87	13748.94	14404.74	(←週4本値)	(225銘柄計)	(東証一部合計)	

XAUUSD 5					
Date	Open	High	Low	Close	5
2013/10/11	1286.83	1294.36	1261.70	1270.16	0
2013/10/10	1305.36	1311.47	1282.44	1287.39	0
2013/10/09	1320.44	1321.65	1294.83	1305.47	0
2013/10/08	1321.68	1329.56	1316.04	1319.13	0
2013/10/07	1314.72	1328.41	1308.64	1323.03	0
2013/10/11	1314.72	1329.56	1261.70	1270.16	(週4本値)

Dow Jones Industrial - USA (DJIA) 5					
Date	Open	High	Low	Close	出来高(*1000)
2013/10/11	15126.52	15236.66	15100.13	15198.90	85,720
2013/10/10	14806.39	15126.07	14806.39	15126.07	106,520
2013/10/09	14778.19	14852.50	14719.43	14802.98	103,070
2013/10/08	14938.04	14938.04	14773.47	14776.53	102,690
2013/10/07	15069.30	15069.30	14920.83	14936.24	79,620
2013/10/11	15069.30	15236.66	14719.43	15198.90	(週4本値)

Historical Data by **Stooq**
 Historical Data by **MarketNewsline**
 Arrangement by **FX_勝てば官軍?**

Crude Light Oil 5					
Date	Open	High	Low	Close	Volume
2013/10/11	102.88	102.91	100.68	101.82	0
2013/10/10	101.48	103.57	101.23	102.95	0
2013/10/09	103.49	103.75	101.22	101.47	0
2013/10/08	103.17	104.04	102.86	103.56	493672
2013/10/07	103.37	103.72	101.89	103.18	687107
2013/10/11	103.37	104.04	100.68	101.82	(週4本値)

USDJPY 5					EURJPY 5					GBPJPY 5				
日付	始値	高値	安値	終値	日付	始値	高値	安値	終値	日付	始値	高値	安値	終値
2013/10/11	98.28	98.57	97.92	98.55	2013/10/11	132.93	133.59	132.44	133.54	2013/10/11	156.96	157.51	156.43	157.25
2013/10/10	97.37	98.33	97.35	98.27	2013/10/10	131.66	132.96	131.65	132.92	2013/10/10	155.30	157.00	155.27	156.95
2013/10/09	96.88	97.64	96.82	97.37	2013/10/09	131.50	132.17	131.23	131.67	2013/10/09	155.80	156.55	154.73	155.31
2013/10/08	96.70	97.25	96.59	96.88	2013/10/08	131.27	132.03	131.16	131.50	2013/10/08	155.55	156.65	155.41	155.80
2013/10/07	97.28	97.32	96.56	96.69	2013/10/07	131.93	132.04	131.10	131.27	2013/10/07	155.90	156.17	155.37	155.55

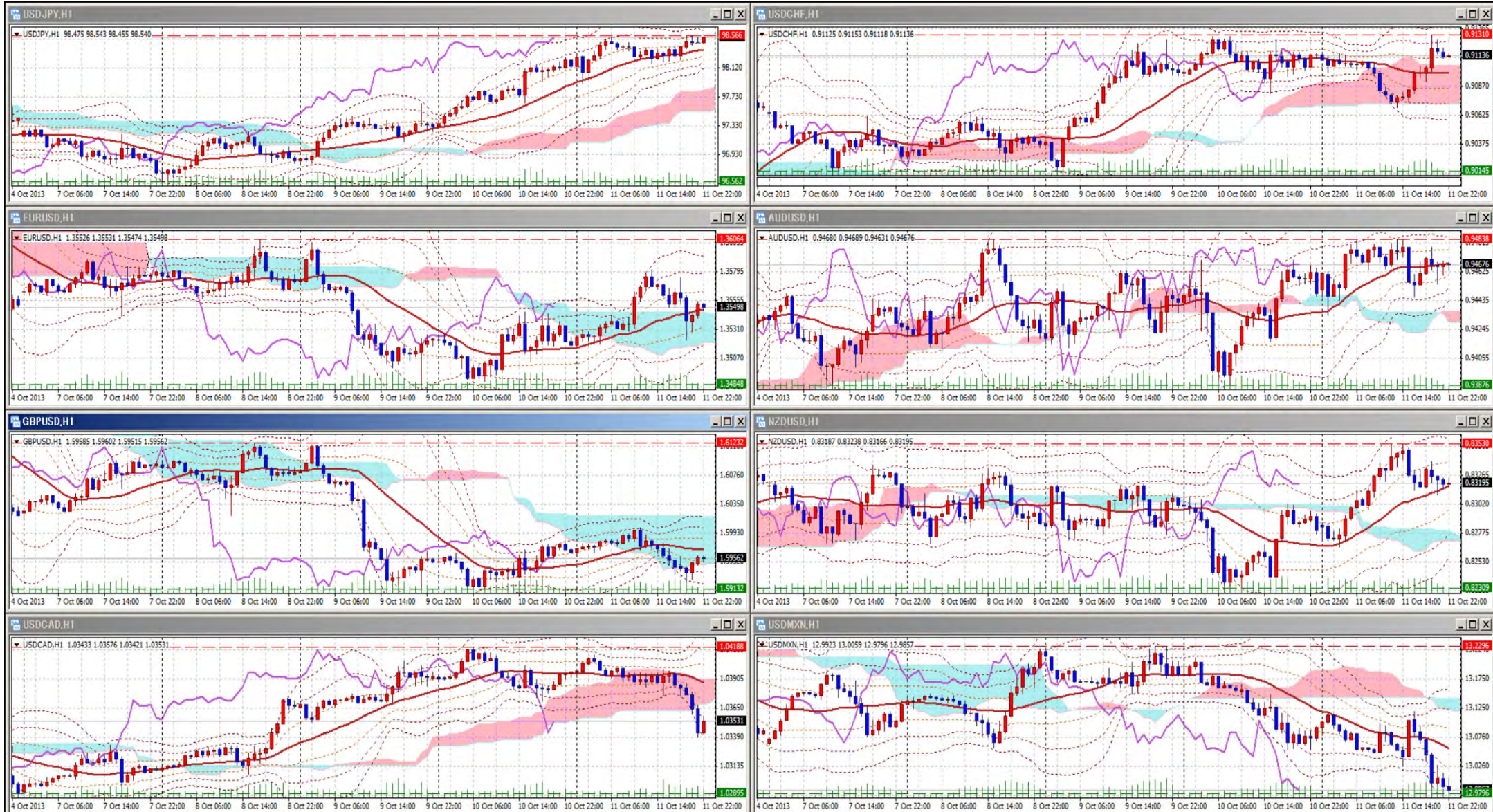
USDJPY Weekly 28					EURJPY Weekly 28					GBPJPY Weekly 28				
日付	始値	高値	安値	終値	日付	始値	高値	安値	終値	日付	始値	高値	安値	終値
2013/10/11	97.28	98.57	96.56	98.55	2013/10/11	131.93	133.59	131.10	133.54	2013/10/11	155.90	157.51	154.73	157.25
2013/10/04	97.78	98.72	96.93	97.45	2013/10/04	131.80	133.46	131.43	132.08	2013/10/04	157.83	159.89	155.72	156.10
2013/09/27	99.26	99.35	98.09	98.23	2013/09/27	134.32	134.42	132.62	132.82	2013/09/27	158.79	159.26	157.35	158.57
2013/09/20	98.81	99.66	97.76	99.33	2013/09/20	132.11	134.94	131.86	134.30	2013/09/20	157.49	159.96	157.31	159.08
2013/09/13	99.76	100.60	99.01	99.24	2013/09/13	131.40	133.36	130.96	132.01	2013/09/13	155.88	158.53	155.50	157.53

先週のIMM取り扱い対ドル8通貨チャート

※ 赤点線は週最高値/青点線は週最低安値、BB中心線はSMA21

2013/10/07 ~ 2013/10/11

Chart by FXDD Malta on MetaTrader4



Pivot Maker Ver 3.0 by FX_勝てば官軍?

<http://fx.najirane.com>