



# IMM扱い8通貨/ダウ/日経/金/オイル/主要クロス円の過去5日及び過去5週の4本値

| AUDUSD     |        |        |        |        | CADUSD     |        |        |        |        | CHFUSD     |        |        |        |        |
|------------|--------|--------|--------|--------|------------|--------|--------|--------|--------|------------|--------|--------|--------|--------|
| Date       | Open   | High   | Low    | Close  | Date       | Open   | High   | Low    | Close  | Date       | Open   | High   | Low    | Close  |
| 2014/07/25 | 0.9415 | 0.9424 | 0.9393 | 0.9396 | 2014/07/25 | 0.9309 | 0.9314 | 0.9242 | 0.9248 | 2014/07/25 | 1.1081 | 1.1090 | 1.1049 | 1.1055 |
| 2014/07/24 | 0.9443 | 0.9470 | 0.9411 | 0.9415 | 2014/07/24 | 0.9324 | 0.9331 | 0.9301 | 0.9309 | 2014/07/24 | 1.1084 | 1.1102 | 1.1066 | 1.1081 |
| 2014/07/23 | 0.9394 | 0.9461 | 0.9381 | 0.9443 | 2014/07/23 | 0.9314 | 0.9338 | 0.9307 | 0.9324 | 2014/07/23 | 1.1083 | 1.1092 | 1.1073 | 1.1084 |
| 2014/07/22 | 0.9371 | 0.9422 | 0.9361 | 0.9394 | 2014/07/22 | 0.9313 | 0.9320 | 0.9295 | 0.9314 | 2014/07/22 | 1.1136 | 1.1139 | 1.1079 | 1.1083 |
| 2014/07/21 | 0.9397 | 0.9399 | 0.9367 | 0.9371 | 2014/07/21 | 0.9315 | 0.9324 | 0.9301 | 0.9313 | 2014/07/21 | 1.1140 | 1.1148 | 1.1125 | 1.1136 |

| CNYUSD     |        |        |        |        | EURUSD     |        |        |        |        | GBPUSD     |        |        |        |        |
|------------|--------|--------|--------|--------|------------|--------|--------|--------|--------|------------|--------|--------|--------|--------|
| Date       | Open   | High   | Low    | Close  | Date       | Open   | High   | Low    | Close  | Date       | Open   | High   | Low    | Close  |
| 2014/07/25 | 0.1615 | 0.1615 | 0.1614 | 0.1615 | 2014/07/25 | 1.3463 | 1.3475 | 1.3421 | 1.3431 | 2014/07/25 | 1.6986 | 1.6998 | 1.6961 | 1.6976 |
| 2014/07/24 | 0.1615 | 0.1616 | 0.1615 | 0.1615 | 2014/07/24 | 1.3462 | 1.3485 | 1.3438 | 1.3463 | 2014/07/24 | 1.7040 | 1.7053 | 1.6966 | 1.6986 |
| 2014/07/23 | 0.1612 | 0.1614 | 0.1612 | 0.1614 | 2014/07/23 | 1.3466 | 1.3474 | 1.3454 | 1.3462 | 2014/07/23 | 1.7064 | 1.7095 | 1.7024 | 1.7040 |
| 2014/07/22 | 0.1611 | 0.1612 | 0.1611 | 0.1612 | 2014/07/22 | 1.3523 | 1.3529 | 1.3459 | 1.3466 | 2014/07/22 | 1.7072 | 1.7082 | 1.7041 | 1.7064 |
| 2014/07/21 | 0.1611 | 0.1612 | 0.1611 | 0.1611 | 2014/07/21 | 1.3529 | 1.3549 | 1.3513 | 1.3523 | 2014/07/21 | 1.7081 | 1.7099 | 1.7056 | 1.7073 |

| JPYUSD     |        |        |        |        | MXNUSD     |        |        |        |        | NZDUSD     |        |        |        |        |
|------------|--------|--------|--------|--------|------------|--------|--------|--------|--------|------------|--------|--------|--------|--------|
| Date       | Open   | High   | Low    | Close  | Date       | Open   | High   | Low    | Close  | Date       | Open   | High   | Low    | Close  |
| 2014/07/25 | 0.9823 | 0.9831 | 0.9810 | 0.9820 | 2014/07/25 | 0.0771 | 0.0773 | 0.0771 | 0.0773 | 2014/07/25 | 0.8564 | 0.8585 | 0.8538 | 0.8553 |
| 2014/07/24 | 0.9848 | 0.9861 | 0.9818 | 0.9823 | 2014/07/24 | 0.0773 | 0.0774 | 0.0771 | 0.0772 | 2014/07/24 | 0.8619 | 0.8623 | 0.8560 | 0.8564 |
| 2014/07/23 | 0.9855 | 0.9870 | 0.9848 | 0.9848 | 2014/07/23 | 0.0774 | 0.0774 | 0.0773 | 0.0773 | 2014/07/23 | 0.8668 | 0.8707 | 0.8608 | 0.8619 |
| 2014/07/22 | 0.9861 | 0.9869 | 0.9843 | 0.9855 | 2014/07/22 | 0.0772 | 0.0774 | 0.0771 | 0.0773 | 2014/07/22 | 0.8685 | 0.8696 | 0.8652 | 0.8668 |
| 2014/07/21 | 0.9867 | 0.9882 | 0.9860 | 0.9861 | 2014/07/21 | 0.0772 | 0.0772 | 0.0770 | 0.0771 | 2014/07/21 | 0.8696 | 0.8719 | 0.8682 | 0.8687 |

| Nikkei 225 - Japonia (NIKKEI) |          |          |          |          | 5営業日以内に休場日あり |                   |
|-------------------------------|----------|----------|----------|----------|--------------|-------------------|
| Date                          | Open     | High     | Low      | Close    | (ドル建て終値)     | 出来高               |
| 2014/07/25                    | 15342.46 | 15457.87 | 15341.69 | 15457.87 | 151.73       | 1198991872        |
| 2014/07/24                    | 15350.28 | 15383.11 | 15232.14 | 15284.42 | 150.67       | 1219706368        |
| 2014/07/23                    | 15367.16 | 15376.20 | 15317.37 | 15328.56 | 151.20       | 1001086912        |
| 2014/07/22                    | 15296.42 | 15392.02 | 15287.93 | 15343.28 | 151.17       | 1154270336        |
| 2014/07/18                    | 15174.08 | 15220.50 | 15110.45 | 15215.71 | 150.03       | 922091776         |
| 週4本値                          | 15174.08 | 15457.87 | 15110.45 | 15457.87 | 151.73       | (225銘柄計) (東証一部合計) |

| XAUUSD     |         |         |         |         |   |
|------------|---------|---------|---------|---------|---|
| Date       | Open    | High    | Low     | Close   | 5 |
| 2014/07/25 | 1292.02 | 1308.36 | 1290.72 | 1307.01 | 0 |
| 2014/07/24 | 1304.03 | 1304.99 | 1287.46 | 1293.42 | 0 |
| 2014/07/23 | 1307.38 | 1310.99 | 1303.12 | 1304.54 | 0 |
| 2014/07/22 | 1311.32 | 1315.65 | 1301.98 | 1306.28 | 0 |
| 2014/07/21 | 1311.77 | 1318.28 | 1307.22 | 1312.41 | 0 |
| 週4本値       | 1311.77 | 1318.28 | 1287.46 | 1307.01 |   |

| Dow Jones Industrial - USA (DJIA) |          |          |          |          | 5        |
|-----------------------------------|----------|----------|----------|----------|----------|
| Date                              | Open     | High     | Low      | Close    | 出来高      |
| 2014/07/25                        | 17079.50 | 17082.33 | 16915.65 | 16960.57 | 67289449 |
| 2014/07/24                        | 17092.02 | 17119.83 | 17061.07 | 17083.80 | 66387656 |
| 2014/07/23                        | 17117.01 | 17121.05 | 17058.05 | 17086.63 | 73441302 |
| 2014/07/22                        | 17054.97 | 17133.43 | 17040.13 | 17113.54 | 77958670 |
| 2014/07/21                        | 17095.11 | 17095.11 | 16974.34 | 17051.73 | 67564332 |
| 週4本値                              | 17095.11 | 17133.43 | 16915.65 | 16960.57 | 67289449 |

Historical Data by **Stooq**  
 Historical Data by **MarketNewsline**  
 (ダウと日経)  
 Arrangement by **FX\_勝てば官軍?**

| Crude Light Oil |        |        |        |        |        |
|-----------------|--------|--------|--------|--------|--------|
| Date            | Open   | High   | Low    | Close  | Volume |
| 2014/07/25      | 102.03 | 102.50 | 101.01 | 101.97 | 0      |
| 2014/07/24      | 103.22 | 103.30 | 101.89 | 102.02 | 0      |
| 2014/07/23      | 102.00 | 103.33 | 101.80 | 103.28 | 0      |
| 2014/07/22      | 102.75 | 103.38 | 101.92 | 101.92 | 486834 |
| 2014/07/21      | 101.95 | 102.94 | 101.48 | 102.81 | 695021 |
| 週4本値            | 101.95 | 103.38 | 101.01 | 101.97 |        |

| USDJPY     |        |        |        |        | EURJPY     |        |        |        |        | GBPJPY     |        |        |        |        |
|------------|--------|--------|--------|--------|------------|--------|--------|--------|--------|------------|--------|--------|--------|--------|
| 日付         | 始値     | 高値     | 安値     | 終値     | 日付         | 始値     | 高値     | 安値     | 終値     | 日付         | 始値     | 高値     | 安値     | 終値     |
| 2014/07/25 | 101.81 | 101.94 | 101.72 | 101.83 | 2014/07/25 | 137.05 | 137.25 | 136.65 | 136.77 | 2014/07/25 | 172.92 | 173.16 | 172.63 | 172.87 |
| 2014/07/24 | 101.54 | 101.85 | 101.42 | 101.80 | 2014/07/24 | 136.70 | 137.18 | 136.36 | 137.05 | 2014/07/24 | 173.03 | 173.06 | 172.63 | 172.92 |
| 2014/07/23 | 101.47 | 101.55 | 101.31 | 101.54 | 2014/07/23 | 136.64 | 136.75 | 136.40 | 136.70 | 2014/07/23 | 173.15 | 173.32 | 172.60 | 173.03 |
| 2014/07/22 | 101.41 | 101.60 | 101.33 | 101.47 | 2014/07/22 | 137.14 | 137.34 | 136.58 | 136.64 | 2014/07/22 | 173.13 | 173.46 | 172.97 | 173.15 |
| 2014/07/21 | 101.35 | 101.42 | 101.20 | 101.41 | 2014/07/21 | 137.11 | 137.15 | 136.88 | 137.14 | 2014/07/21 | 173.11 | 173.23 | 172.79 | 173.14 |

| USDJPY Weekly |        |        |        |        | EURJPY Weekly |        |        |        |        | GBPJPY Weekly |        |        |        |        |
|---------------|--------|--------|--------|--------|---------------|--------|--------|--------|--------|---------------|--------|--------|--------|--------|
| 日付            | 始値     | 高値     | 安値     | 終値     | 日付            | 始値     | 高値     | 安値     | 終値     | 日付            | 始値     | 高値     | 安値     | 終値     |
| 2014/07/25    | 101.35 | 101.94 | 101.20 | 101.83 | 2014/07/25    | 137.11 | 137.34 | 136.36 | 136.77 | 2014/07/25    | 173.11 | 173.46 | 172.60 | 172.87 |
| 2014/07/18    | 101.33 | 101.79 | 101.08 | 101.35 | 2014/07/18    | 137.87 | 138.44 | 136.70 | 137.07 | 2014/07/18    | 173.49 | 174.54 | 172.67 | 173.16 |
| 2014/07/11    | 102.06 | 102.20 | 101.06 | 101.32 | 2014/07/11    | 138.73 | 138.82 | 137.50 | 137.87 | 2014/07/11    | 175.17 | 175.25 | 172.95 | 173.44 |
| 2014/07/04    | 101.43 | 102.26 | 101.24 | 102.06 | 2014/07/04    | 138.39 | 139.27 | 138.10 | 138.73 | 2014/07/04    | 172.76 | 175.35 | 172.37 | 175.08 |
| 2014/06/27    | 102.07 | 102.16 | 101.31 | 101.41 | 2014/06/27    | 138.74 | 138.91 | 137.91 | 138.39 | 2014/06/27    | 173.71 | 173.81 | 172.45 | 172.78 |

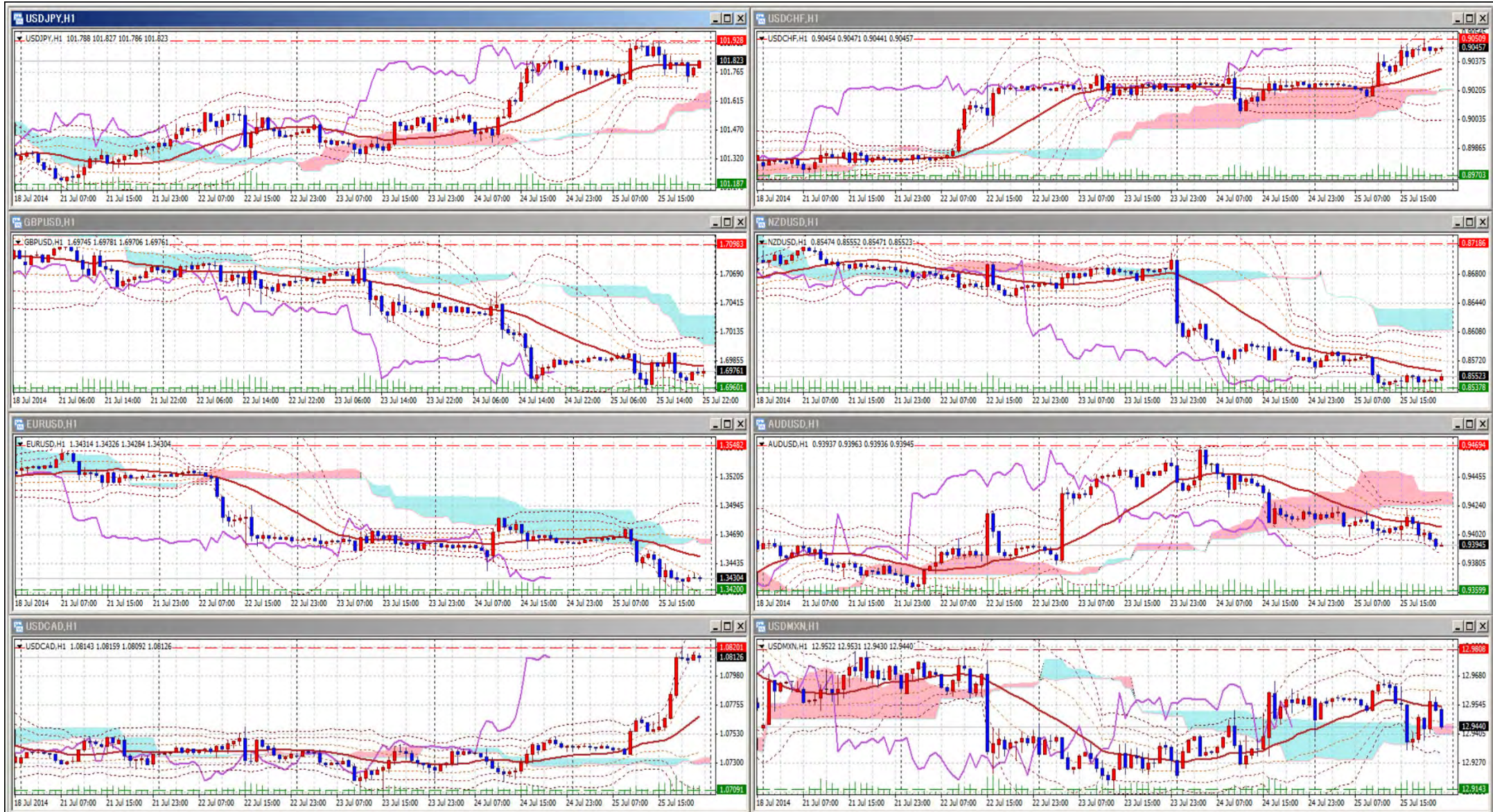


# 先週のIMM取り扱い対ドル8通貨チャート

※ 赤点線は週最高値/青天線は週最低値、BB中心線はSMA21

2014/07/21 ~ 2014/07/25

Chart by FXDD Malta on MetaTrader4



Pivot Maker Ver 3.0 by FX\_勝てば官軍?

<http://fx.najirane.com>