

JAPANESE YEN - CHICAGO MERCANTILE EXCHANGE
2015/08/25 ~ 2016/02/16

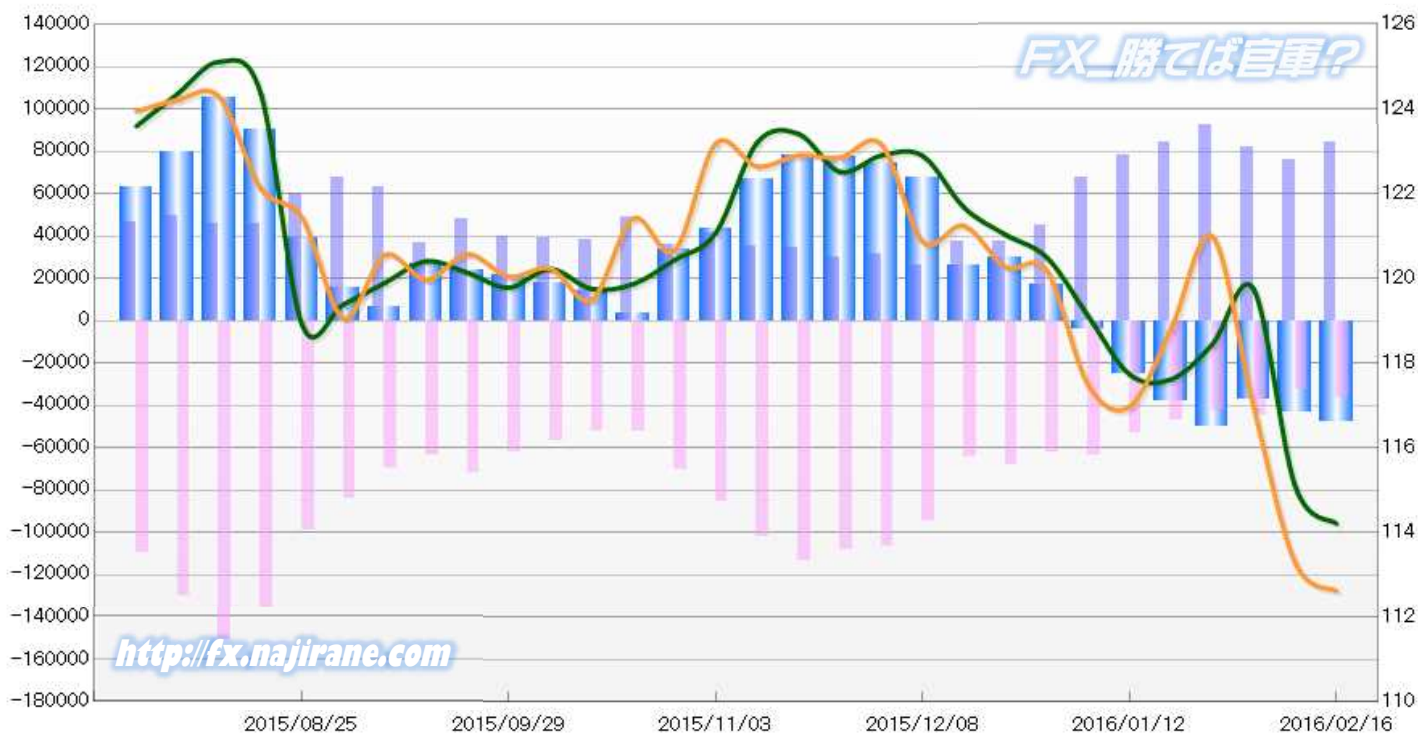
Code-097741

2016/02/19 NYクローズ時公表値

Report_Date	Non Commercial Positions												火曜日	金曜日
	Long	増減	増減(%)	Short	増減	増減(%)	売り越し	増減	増減(%)	売買計	増減	増減(%)	引け値	引け値
2016/02/16	84518	8707	11.5%	36617	4038	12.4%	-47901	4669	10.8%	121135	12745	11.8%	114.22	112.63
2016/02/09	75811	-6297	-7.7%	32579	-12284	-27.4%	-43232	5987	16.1%	108390	-18581	-14.6%	115.11	113.30
2016/02/02	82108	-10520	-11.4%	44863	2261	5.3%	-37245	-12781	-25.5%	126971	-8259	-6.1%	119.75	116.97
2016/01/26	92628	8143	9.6%	42602	-4230	-9.0%	-50026	12373	32.9%	135230	3913	3.0%	118.45	121.00
2016/01/19	84485	6100	7.8%	46832	-6287	-11.8%	-37653	12387	49.0%	131317	-187	-0.1%	117.62	118.81
2016/01/12	78385	10914	16.2%	53119	-10249	-16.2%	-25266	21163	515.8%	131504	665	0.5%	117.74	116.98
2016/01/05	67471	22463	49.9%	63368	1134	1.8%	-4103	-21329	-123.8%	130839	23597	22.0%	119.12	117.49
2015/12/29	45008	7331	19.5%	62234	-5810	-8.5%	17226	-13141	-43.3%	107242	1521	1.4%	120.50	120.19
2015/12/22	37677	376	1.0%	68044	4163	6.5%	30367	3787	14.2%	105721	4539	4.5%	121.04	120.28
2015/12/15	37301	10901	41.3%	63881	-30569	-32.4%	26580	-41470	-60.9%	101182	-19668	-16.3%	121.68	121.25
2015/12/08	26400	-4828	-15.5%	94450	-11679	-11.0%	68050	-6851	-9.1%	120850	-16507	-12.0%	122.90	120.87
2015/12/01	31228	951	3.1%	106129	-1484	-1.4%	74901	-2435	-3.1%	137357	-533	-0.4%	122.91	123.17
2015/11/24	30277	-4198	-12.2%	107613	-5473	-4.8%	77336	-1275	-1.6%	137890	-9671	-6.6%	122.52	122.86
2015/11/17	34475	-606	-1.7%	113086	11117	10.9%	78611	11723	17.5%	147561	10511	7.7%	123.42	122.91
2015/11/10	35081	-6408	-15.4%	101969	16693	19.6%	66888	23101	52.8%	137050	10285	8.1%	123.21	122.65
2015/11/03	41489	5052	13.9%	85276	14928	21.2%	43787	9876	29.1%	126765	19980	18.7%	121.08	123.19
2015/10/27	36437	-12310	-25.3%	70348	17962	34.3%	33911	30272	831.9%	106785	5652	5.6%	120.44	120.66
2015/10/20	48747	10743	28.3%	52386	550	1.1%	3639	-10193	-73.7%	101133	11293	12.6%	119.87	121.42
2015/10/13	38004	-1046	-2.7%	51836	-4813	-8.5%	13832	-3767	-21.4%	89840	-5859	-6.1%	119.76	119.50
2015/10/06	39050	-703	-1.8%	56649	-5156	-8.3%	17599	-4453	-20.2%	95699	-5859	-5.8%	120.23	120.24
2015/09/29	39753	-8529	-17.7%	61805	-10155	-14.1%	22052	-1626	-6.9%	101558	-18684	-15.5%	119.79	120.05
2015/09/22	48282	11833	32.5%	71960	8697	13.7%	23678	-3136	-11.7%	120242	20530	20.6%	120.14	120.58
2015/09/15	36449	-26672	-42.3%	63263	-6520	-9.3%	26814	20152	302.5%	99712	-33192	-25.0%	120.41	119.97
2015/09/08	63121	-4902	-7.2%	69783	-13795	-16.5%	6662	-8893	-57.2%	132904	-18697	-12.3%	119.90	120.56
2015/09/01	68023	8101	13.5%	83578	-15403	-15.6%	15555	-23504	-60.2%	151601	-7302	-4.6%	119.39	119.07
2015/08/25	59922			98981			39059			158903			118.92	121.44

JAPANESE YEN - CHICAGO MERCANTILE EXCHANGE
FUTURES ONLY POSITIONS

— 金曜終値 — 火曜終値 — Short枚数 — Long枚数 — 売り越し枚数(マイナスの場合は買越しと読替)



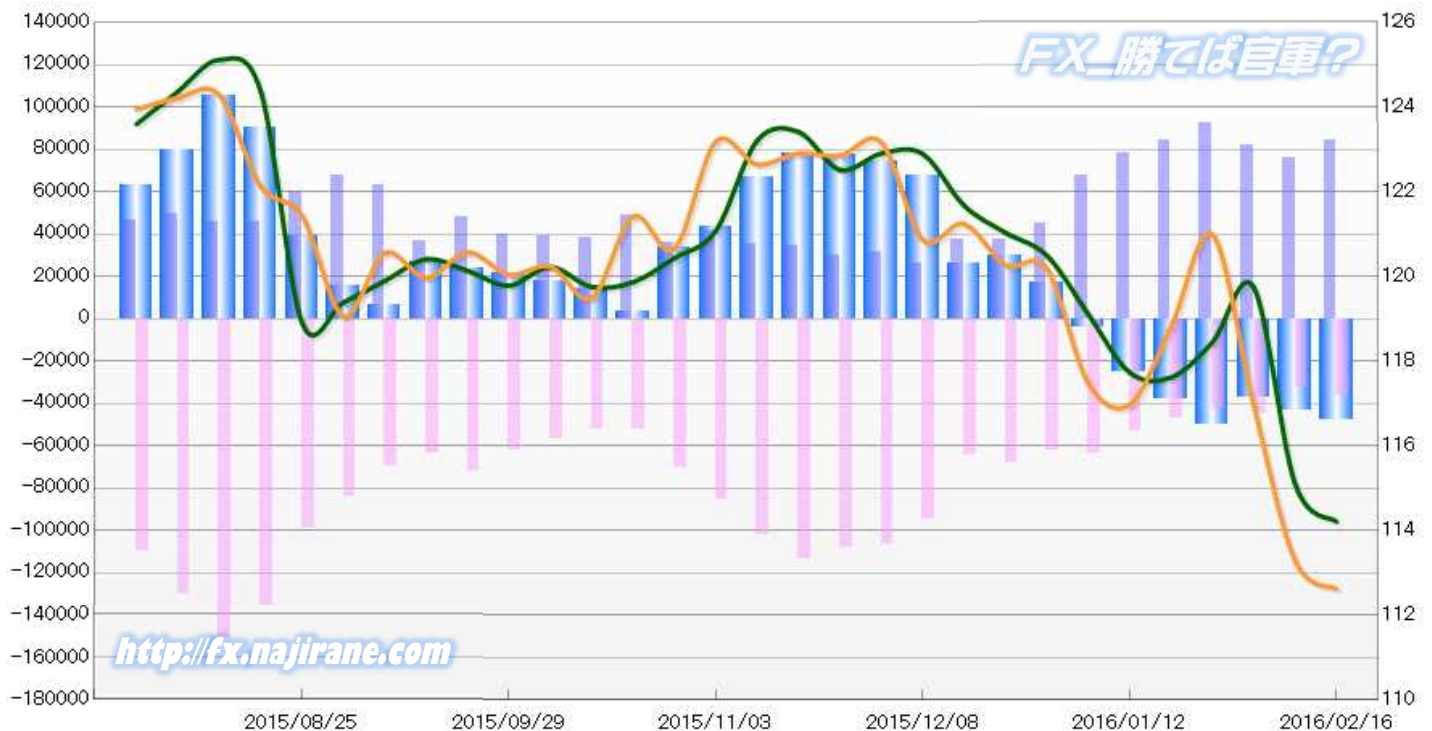
JAPANESE YEN - CHICAGO MERCANTILE EXCHANGE
2015/08/25 ~ 2016/02/16

Code-097741
2016/02/19 NYクローズ時公表値

Report_Date	Non Commercial Positions												火曜日	金曜日
	Long	増減	増減(%)	Short	増減	増減(%)	売り越し	増減	増減(%)	売買計	増減	増減(%)	引け値	引け値
2016/02/16	84518	8707	11.5%	36617	4038	12.4%	-47901	4669	10.8%	121135	12745	11.8%	114.22	112.63
2016/02/09	75811	-6297	-7.7%	32579	-12284	-27.4%	-43232	5987	16.1%	108390	-18581	-14.6%	115.11	113.30
2016/02/02	82108	-10520	-11.4%	44863	2261	5.3%	-37245	-12781	-25.5%	126971	-8259	-6.1%	119.75	116.97
2016/01/26	92628	8143	9.6%	42602	-4230	-9.0%	-50026	12373	32.9%	135230	3913	3.0%	118.45	121.00
2016/01/19	84485	6100	7.8%	46832	-6287	-11.8%	-37653	12387	49.0%	131317	-187	-0.1%	117.62	118.81
2016/01/12	78385	10914	16.2%	53119	-10249	-16.2%	-25266	21163	515.8%	131504	665	0.5%	117.74	116.98
2016/01/05	67471	22463	49.9%	63368	1134	1.8%	-4103	-21329	-123.8%	130839	23597	22.0%	119.12	117.49
2015/12/29	45008	7331	19.5%	62234	-5810	-8.5%	17226	-13141	-43.3%	107242	1521	1.4%	120.50	120.19
2015/12/22	37677	376	1.0%	68044	4163	6.5%	30367	3787	14.2%	105721	4539	4.5%	121.04	120.28
2015/12/15	37301	10901	41.3%	63881	-30569	-32.4%	26580	-41470	-60.9%	101182	-19668	-16.3%	121.68	121.25
2015/12/08	26400	-4828	-15.5%	94450	-11679	-11.0%	68050	-6851	-9.1%	120850	-16507	-12.0%	122.90	120.87
2015/12/01	31228	951	3.1%	106129	-1484	-1.4%	74901	-2435	-3.1%	137357	-533	-0.4%	122.91	123.17
2015/11/24	30277	-4198	-12.2%	107613	-5473	-4.8%	77336	-1275	-1.6%	137890	-9671	-6.6%	122.52	122.86
2015/11/17	34475	-606	-1.7%	113086	11117	10.9%	78611	11723	17.5%	147561	10511	7.7%	123.42	122.91
2015/11/10	35081	-6408	-15.4%	101969	16693	19.6%	66888	23101	52.8%	137050	10285	8.1%	123.21	122.65
2015/11/03	41489	5052	13.9%	85276	14928	21.2%	43787	9876	29.1%	126765	19980	18.7%	121.08	123.19
2015/10/27	36437	-12310	-25.3%	70348	17962	34.3%	33911	30272	831.9%	106785	5652	5.6%	120.44	120.66
2015/10/20	48747	10743	28.3%	52386	550	1.1%	3639	-10193	-73.7%	101133	11293	12.6%	119.87	121.42
2015/10/13	38004	-1046	-2.7%	51836	-4813	-8.5%	13832	-3767	-21.4%	89840	-5859	-6.1%	119.76	119.50
2015/10/06	39050	-703	-1.8%	56649	-5156	-8.3%	17599	-4453	-20.2%	95699	-5859	-5.8%	120.23	120.24
2015/09/29	39753	-8529	-17.7%	61805	-10155	-14.1%	22052	-1626	-6.9%	101558	-18684	-15.5%	119.79	120.05
2015/09/22	48282	11833	32.5%	71960	8697	13.7%	23678	-3136	-11.7%	120242	20530	20.6%	120.14	120.58
2015/09/15	36449	-26672	-42.3%	63263	-6520	-9.3%	26814	20152	302.5%	99712	-33192	-25.0%	120.41	119.97
2015/09/08	63121	-4902	-7.2%	69783	-13795	-16.5%	6662	-8893	-57.2%	132904	-18697	-12.3%	119.90	120.56
2015/09/01	68023	8101	13.5%	83578	-15403	-15.6%	15555	-23504	-60.2%	151601	-7302	-4.6%	119.39	119.07
2015/08/25	59922			98981			39059			158903			118.92	121.44

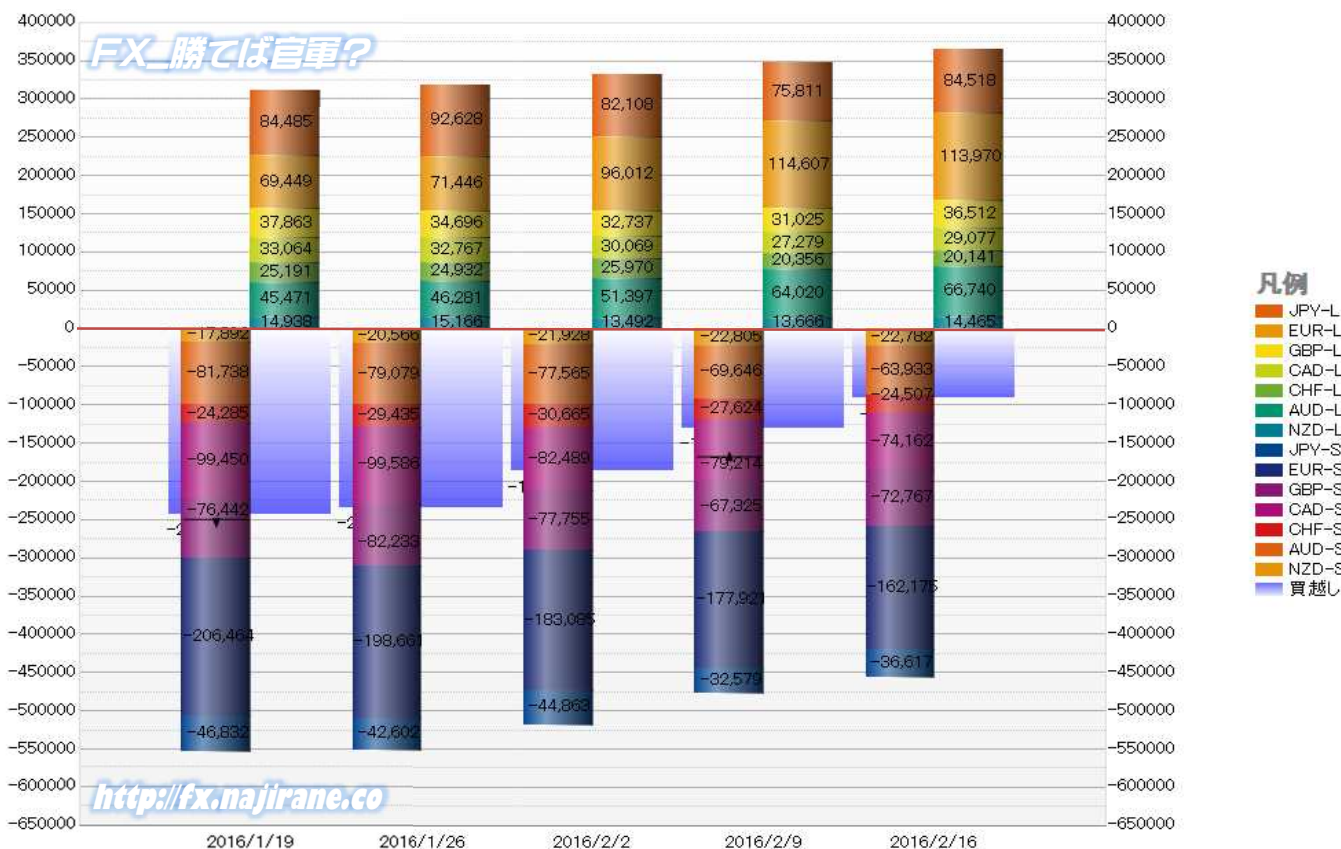
JAPANESE YEN - CHICAGO MERCANTILE EXCHANGE
FUTURES ONLY POSITIONS

— 金曜終値 — 火曜終値 — Short枚数 — Long枚数 — 売り越し枚数(マイナスの場合は買越しと読替え)



	2016/01/19			2016/01/26			2016/02/02			2016/02/09			2016/02/16		
	Long	Short	売り越し	Long	Short	売り越し	Long	Short	売り越し	Long	Short	売り越し	Long	Short	売り越し
JPY	84485	46832	-37653	92628	42602	-50026	82108	44863	-37245	75811	32579	-43232	84518	36617	-47901
	前週比 枚数増減 (枚)			8143	-4230	-12373	-10520	2261	12781	-6297	-12284	-5987	8707	4038	-4669
	前週比 枚数増減 (%)			9.64%	-9.03%	32.86%	-11.36%	5.31%	-25.55%	-7.67%	-27.38%	16.07%	11.49%	12.39%	10.80%
EUR	69449	206464	137015	71446	198661	127215	96012	183085	87073	114607	177921	63314	113970	162175	48205
	前週比 枚数増減 (枚)			1997	-7803	-9800	24566	-15576	-40142	18595	-5164	-23759	-637	-15746	-15109
	前週比 枚数増減 (%)			2.88%	-3.78%	-7.15%	34.38%	-7.84%	-31.55%	19.37%	-2.82%	-27.29%	-0.56%	-8.85%	-23.86%
GBP	37863	76442	38579	34696	82233	47537	32737	77755	45018	31025	67325	36300	36512	72767	36255
	前週比 枚数増減 (枚)			-3167	5791	8958	-1959	-4478	-2519	-1712	-10430	-8718	5487	5442	-45
	前週比 枚数増減 (%)			-8.36%	7.58%	23.22%	-5.65%	-5.45%	-5.30%	-5.23%	-13.41%	-19.37%	17.69%	8.08%	-0.12%
AUD	45471	81738	36267	46281	79079	32798	51397	77565	26168	64020	69646	5626	66740	63933	-2807
	前週比 枚数増減 (枚)			810	-2659	-3469	5116	-1514	-6630	12623	-7919	-20542	2720	-5713	-8433
	前週比 枚数増減 (%)			1.78%	-3.25%	-9.57%	11.05%	-1.91%	-20.21%	24.56%	-10.21%	-78.50%	4.25%	-8.20%	-149.89%
CAD	33064	99450	66386	32767	99586	66819	30069	82489	52420	27279	79214	51935	29077	74162	45085
	前週比 枚数増減 (枚)			-297	136	433	-2698	-17097	-14399	-2790	-3275	-485	1798	-5052	-6850
	前週比 枚数増減 (%)			-0.90%	0.14%	0.65%	-8.23%	-17.17%	-21.55%	-9.28%	-3.97%	-0.93%	6.59%	-6.38%	-13.19%
CHF	25191	24285	-906	24932	29435	4503	25970	30665	4695	20356	27624	7268	20141	24507	4366
	前週比 枚数増減 (枚)			-259	5150	5409	1038	1230	192	-5614	-3041	2573	-215	-3117	-2902
	前週比 枚数増減 (%)			-1.03%	21.21%	-597.02%	4.16%	4.18%	4.26%	-21.62%	-9.92%	54.80%	-1.06%	-11.28%	-39.93%
NZD	14938	17892	2954	15166	20566	5400	13492	21928	8436	13666	22805	9139	14465	22782	8317
	前週比 枚数増減 (枚)			228	2674	2446	-1674	1362	3036	174	877	703	799	-23	-822
	前週比 枚数増減 (%)			1.53%	14.95%	82.80%	-11.04%	6.62%	56.22%	1.29%	4.00%	8.33%	5.85%	-0.10%	-8.99%
MXN	30361	106364	76003	28487	105094	76607	24958	103552	78594	41732	88254	46522	21445	98830	77385
	前週比 枚数増減 (枚)			-1874	-1270	604	-3529	-1542	1987	16774	-15298	-32072	-20287	10576	30863
	前週比 枚数増減 (%)			-6.17%	-1.19%	0.79%	-12.39%	-1.47%	2.59%	67.21%	-14.77%	-40.81%	-48.61%	11.98%	66.34%
Total All 8	340822	659467	318645	346403	657256	310853	356743	621902	265159	388496	565368	176872	386868	555773	168905
	前週比 枚数増減 (枚)			5581	-2211	-7792	10340	-35354	-45694	31753	-56534	-88287	-1628	-9595	-7967
	前週比 枚数増減 (%)			1.64%	-0.34%	-2.45%	2.98%	-5.38%	-14.70%	8.90%	-9.09%	-33.30%	-0.42%	-1.70%	-4.50%
Total 7 (MXN除く)	310461	553103	242642	317916	552162	234246	331785	518350	186565	346764	477114	130350	365423	456943	91520
	前週比 枚数増減 (枚)			7455	-941	-8396	13869	-33812	-47681	14979	-41236	-56215	18659	-20171	-38830
	前週比 枚数増減 (%)			2.4%	-0.2%	-3.5%	4.4%	-6.1%	-20.4%	4.5%	-8.0%	-30.1%	5.4%	-4.2%	-29.8%

直近5週 CFTC IMM主要7通貨の構成

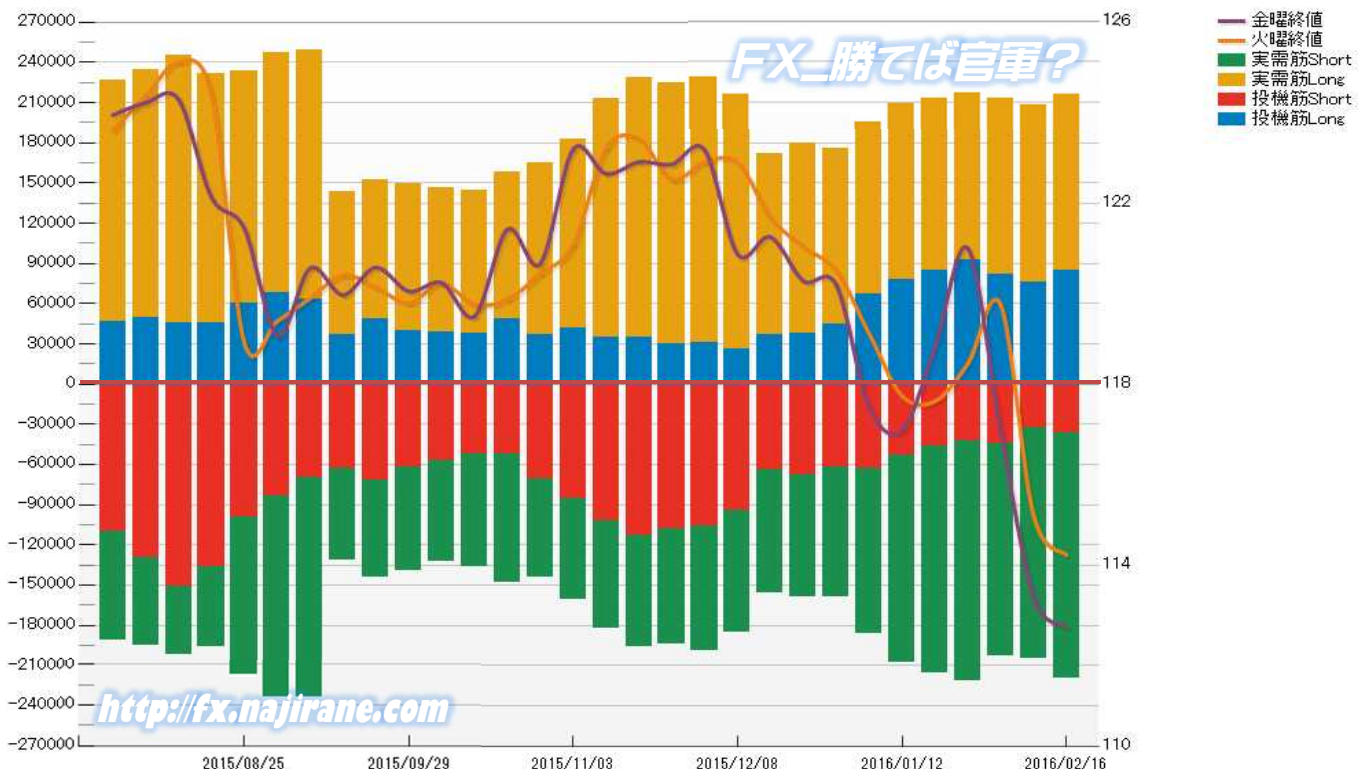


JAPANESE YEN - CHICAGO MERCANTILE EXCHANGE
FUTURES ONLY POSITIONS

Code-097741
2016/02/19 公表値

Date	投機筋集計				実需筋集計				投機筋+実需筋合計				ドル円終値	
	円買い	円売り	売り越し	売買計	円買い	円売り	売り越し	売買計	円買い	円売り	売り越し	売買計	火曜締め	金曜締め
2016/02/16	84518	36617	-47901	121135	131826	183285	51459	315111	216344	219902	3558	436246	114.22	112.63
2016/02/09	75811	32579	-43232	108390	131862	172663	40801	304525	207673	205242	-2431	412915	115.11	113.30
2016/02/02	82108	44863	-37245	126971	130736	157826	27090	288562	212844	202689	-10155	415533	119.75	116.97
2016/01/26	92628	42602	-50026	135230	124038	178679	54641	302717	216666	221281	4615	437947	118.45	121.00
2016/01/19	84485	46832	-37653	131317	128081	168498	40417	296579	212566	215330	2764	427896	117.62	118.81
2016/01/12	78385	53119	-25266	131504	130859	154704	23845	285563	209244	207823	-1421	417067	117.74	116.98
2016/01/05	67471	63368	-4103	130839	127747	123204	-4543	250951	195218	186572	-8646	381790	119.12	117.49
2015/12/29	45008	62234	17226	107242	131111	96331	-34780	227442	176119	158565	-17554	334684	120.50	120.19
2015/12/22	37677	68044	30367	105721	141911	90973	-50938	232884	179588	159017	-20571	338605	121.04	120.28
2015/12/15	37301	63881	26580	101182	134622	92036	-42586	226658	171923	155917	-16006	327840	121.68	121.25
2015/12/08	26400	94450	68050	120850	189782	91225	-98557	281007	216182	185675	-30507	401857	122.90	120.87
2015/12/01	31228	106129	74901	137357	197457	92536	-104921	289993	228685	198665	-30020	427350	122.91	123.17
2015/11/24	30277	107613	77336	137890	194629	86696	-107933	281325	224906	194309	-30597	419215	122.52	122.86
2015/11/17	34475	113086	78611	147561	194025	82801	-111224	276826	228500	195887	-32613	424387	123.42	122.91
2015/11/10	35081	101969	66888	137050	177813	80127	-97686	257940	212894	182096	-30798	394990	123.21	122.65
2015/11/03	41489	85276	43787	126765	140770	75643	-65127	216413	182259	160919	-21340	343178	121.08	123.19
2015/10/27	36437	70348	33911	106785	128969	73765	-55204	202734	165406	144113	-21293	309519	120.44	120.66
2015/10/20	48747	52386	3639	101133	109001	95934	-13067	204935	157748	148320	-9428	306068	119.87	121.42
2015/10/13	38004	51836	13832	89840	106019	84263	-21756	190282	144023	136099	-7924	280122	119.76	119.50
2015/10/06	39050	56649	17599	95699	107023	76265	-30758	183288	146073	132914	-13159	278987	120.23	120.24
2015/09/29	39753	61805	22052	101558	109614	77076	-32538	186690	149367	138881	-10486	288248	119.79	120.05
2015/09/22	48282	71960	23678	120242	103792	72205	-31587	175997	152074	144165	-7909	296239	120.14	120.58
2015/09/15	36449	63263	26814	99712	107374	67815	-39559	175189	143823	131078	-12745	274901	120.41	119.97
2015/09/08	63121	69783	6662	132904	185864	164852	-21012	350716	248985	234635	-14350	483620	119.90	120.56
2015/09/01	68023	83578	15555	151601	179349	150846	-28503	330195	247372	234424	-12948	481796	119.39	119.07
2015/08/25	59922	98981	39059	158903	173759	119045	-54714	292804	233681	218026	-15655	451707	118.92	121.44
2015/08/18	45935	136065	90130	182000	185657	60438	-125219	246095	231592	196503	-35089	428095	124.38	122.13
2015/08/11	45768	150994	105226	196762	199520	51445	-148075	250965	245288	202439	-42849	447727	125.12	124.29
2015/08/04	49906	129622	79716	179528	185079	65098	-119981	250177	234985	194720	-40265	429705	124.37	124.22
2015/07/28	46270	109808	63538	156078	180620	81388	-99232	262008	226890	191196	-35694	418086	123.60	123.95

JAPANESE YEN - CHICAGO MERCANTILE EXCHANGE
FUTURES ONLY POSITIONS Code-097741

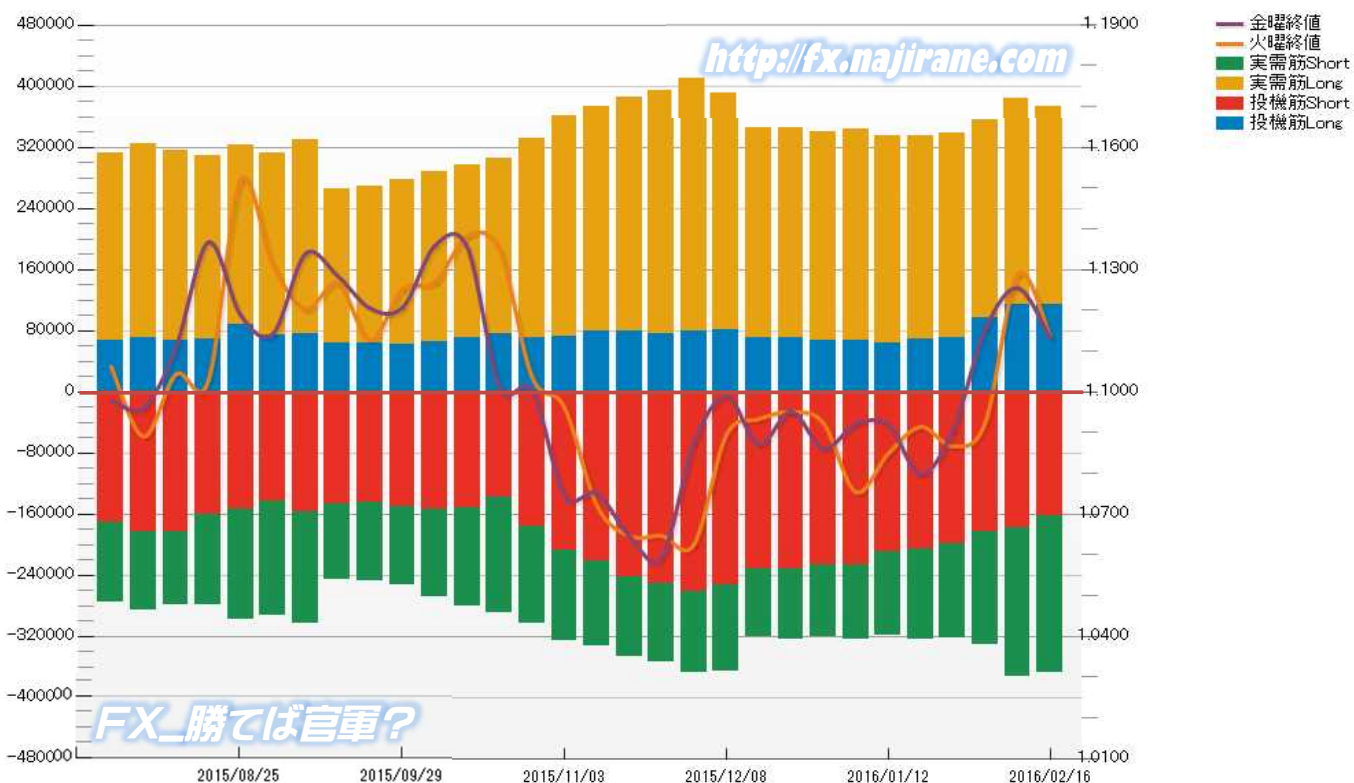


EURO FX - CHICAGO MERCANTILE EXCHANGE
FUTURES ONLY POSITIONS

Code-099741
2016/02/19 公表値

Date	投機筋集計				実需筋集計				投機筋+実需筋合計				ユーロドル終値	
	EUR買い	EUR売り	売り越し	売買計	EUR買い	EUR売り	売り越し	売買計	EUR買い	EUR売り	売り越し	売買計	火曜締め	金曜締め
2016/02/16	113970	162175	48205	276145	258996	205232	-53764	464228	372966	367407	-5559	740373	1.1137	1.1132
2016/02/09	114607	177921	63314	292528	268586	194562	-74024	463148	383193	372483	-10710	755676	1.1288	1.1255
2016/02/02	96012	183085	87073	279097	259869	147872	-111997	407741	355881	330957	-24924	686838	1.0925	1.1153
2016/01/26	71446	198661	127215	270107	267012	124194	-142818	391206	338458	322855	-15603	661313	1.0866	1.0907
2016/01/19	69449	206464	137015	275913	265334	117867	-147467	383201	334783	324331	-10452	659114	1.0914	1.0798
2016/01/12	63162	209613	146451	272775	271543	109792	-161751	381335	334705	319405	-15300	654110	1.0848	1.0919
2016/01/05	66857	227500	160643	294357	276815	97443	-179372	374258	343672	324943	-18729	668615	1.0754	1.0921
2015/12/29	66973	227523	160550	294496	273701	93279	-180422	366980	340674	320802	-19872	661476	1.0923	1.0861
2015/12/22	70509	231556	161047	302065	275354	93283	-182071	368637	345863	324839	-21024	670702	1.0951	1.0952
2015/12/15	71295	231256	159961	302551	275052	89741	-185311	364793	346347	320997	-25350	667344	1.0933	1.0870
2015/12/08	80378	252709	172331	333087	309680	112572	-197108	422252	390058	365281	-24777	755339	1.0894	1.0990
2015/12/01	78782	261627	182845	340409	330854	106332	-224522	437186	409636	367959	-41677	777595	1.0625	1.0874
2015/11/24	76296	251780	175484	328076	318441	102519	-215922	420960	394737	354299	-40438	749036	1.0646	1.0593
2015/11/17	78898	243075	164177	321973	307454	103302	-204152	410756	386352	346377	-39975	732729	1.0646	1.0646
2015/11/10	78994	221933	142939	300927	294780	110225	-184555	405005	373774	332158	-41616	705932	1.0721	1.0751
2015/11/03	72883	207217	134334	280100	288232	119288	-168944	407520	361115	326505	-34610	687620	1.0962	1.0745
2015/10/27	70351	176285	105934	246636	261683	127233	-134450	388916	332034	303518	-28516	635552	1.1037	1.1003
2015/10/20	76291	138857	62566	215148	229622	150293	-79329	379915	305913	289150	-16763	595063	1.1347	1.1010
2015/10/13	71132	151708	80576	222840	226415	129400	-97015	355815	297547	281108	-16439	578655	1.1382	1.1354
2015/10/06	65410	154220	88810	219630	222477	113970	-108507	336447	287887	268190	-19697	556077	1.1269	1.1359
2015/09/29	61932	149592	87660	211524	215338	103272	-112066	318610	277270	252864	-24406	530134	1.1252	1.1207
2015/09/22	63526	144559	81033	208085	204828	102714	-102114	307542	268354	247273	-21081	515627	1.1126	1.1205
2015/09/15	63416	147618	84202	211034	201476	99066	-102410	300542	264892	246684	-18208	511576	1.1266	1.1284
2015/09/08	75715	156956	81241	232671	254844	146399	-108445	401243	330559	303355	-27204	633914	1.1203	1.1339
2015/09/01	74910	142767	67857	217677	238443	150100	-88343	388543	313353	292867	-20486	606220	1.1311	1.1143
2015/08/25	87807	153885	66078	241692	235992	144841	-91151	380833	323799	298726	-25073	622525	1.1520	1.1188
2015/08/18	68473	161205	92732	229678	240738	118412	-122326	359150	309211	279617	-29594	588828	1.1027	1.1367
2015/08/11	67373	182583	115210	249956	248825	96502	-152323	345327	316198	279085	-37113	595283	1.1043	1.1109
2015/08/04	70620	184014	113394	254634	254646	102623	-152023	357269	325266	286637	-38629	611903	1.0890	1.0960
2015/07/28	67842	171850	104008	239692	244469	103550	-140919	348019	312311	275400	-36911	587711	1.1062	1.0980

EURO FX - CHICAGO MERCANTILE EXCHANGE
FUTURES ONLY POSITIONS Code-099741



FX_勝てば官軍?

CME Daily Volume

シカゴ・マーカンタイル取引所 取扱高日次データ

FX_勝てば官軍?

<http://fx.najirane.com>

JPN Yen	取扱高			当日含む前5営業日計			参考レート	
	CALL	PUT	FUTURE	CALL	PUT	FUTURE	Open	Close
2016/2/18 (木)	3076	2380	124126	38375	30742	1091453	114.11	113.33
2016/2/17 (水)	4932	2154	159236	50191	34022	1283307	114.23	114.11
2016/2/16 (火)	10564	4277	244153	51825	38804	1396394	114.46	114.22
2016/2/12 (金)	7549	4951	230126	50684	39420	1378630	112.56	113.30
2016/2/11 (木)	12254	16980	333812	56495	42986	1334244	113.52	112.56
2016/2/10 (水)	14892	5660	315980	57600	38411	1229811	115.11	113.52
2016/2/9 (火)	6566	6936	272323	70421	40959	1246667	115.49	115.11
2016/2/8 (月)	9423	4893	226389	73133	36516	1125099	116.94	115.49
2016/2/5 (金)	13360	8517	185740	68133	35008	1027973	116.87	116.97
2016/2/4 (木)	13359	12405	229379	64671	37052	1173370	118.06	116.88

EU Euro	取扱高			当日含む前5営業日計			参考レート	
	CALL	PUT	FUTURE	CALL	PUT	FUTURE	Open	Close
2016/2/18 (木)	10174	12530	180568	51864	79916	1167571	1.1129	1.1109
2016/2/17 (水)	5727	15199	171684	55504	87593	1254489	1.1137	1.1129
2016/2/16 (火)	12634	16926	254411	80850	94767	1365730	1.1164	1.1137
2016/2/12 (金)	10454	20258	219859	83898	102721	1328280	1.1314	1.1255
2016/2/11 (木)	12875	15003	341049	101618	119390	1388919	1.1278	1.1314
2016/2/10 (水)	13814	20207	267486	140634	156988	1355271	1.1288	1.1279
2016/2/9 (火)	31073	22373	282925	186230	197039	1430049	1.1200	1.1288
2016/2/8 (月)	15682	24880	216961	167709	192504	1300398	1.1146	1.1200
2016/2/5 (金)	28174	36927	280498	159399	175285	1248091	1.1201	1.1153
2016/2/4 (木)	51891	52601	307401	150930	162367	1244644	1.1082	1.1201

CAN Dollar	取扱高			当日含む前5営業日計			参考レート	
	CALL	PUT	FUTURE	CALL	PUT	FUTURE	Open	Close
2016/2/18 (木)	1275	2086	57874	11344	21438	388390	0.7305	0.7283
2016/2/17 (水)	5425	8077	74803	13028	23429	419908	0.7211	0.7305
2016/2/16 (火)	890	2411	85248	9918	19067	415595	0.7228	0.7211
2016/2/12 (金)	2009	2026	73677	11204	18762	389717	0.7186	0.7215
2016/2/11 (木)	1745	6838	96788	12912	22175	401516	0.7179	0.7187
2016/2/10 (水)	2959	4077	89392	16472	20721	397671	0.7207	0.7179
2016/2/9 (火)	2315	3715	70490	26533	21440	430393	0.7177	0.7207
2016/2/8 (月)	2176	2106	59370	26957	20092	432099	0.7198	0.7177
2016/2/5 (金)	3717	5439	85476	28808	19461	458683	0.7270	0.7192
2016/2/4 (木)	5305	5384	92943	26984	15983	468887	0.7252	0.7270

AUS Dollar	取扱高			当日含む前5営業日計			参考レート	
	CALL	PUT	FUTURE	CALL	PUT	FUTURE	Open	Close
2016/2/18 (木)	1111	1856	69353	7830	10795	499135	0.7174	0.7153
2016/2/17 (水)	1208	1749	87358	8219	11911	531317	0.7114	0.7173
2016/2/16 (火)	1919	3061	131712	10003	13538	561689	0.7137	0.7113
2016/2/12 (金)	1356	1581	76403	10323	14206	503695	0.7124	0.7100
2016/2/11 (木)	2236	2548	134309	13432	19293	533354	0.7102	0.7124
2016/2/10 (水)	1500	2972	101535	14470	21027	490183	0.7074	0.7101
2016/2/9 (火)	2992	3376	117730	16285	21339	520072	0.7084	0.7074
2016/2/8 (月)	2239	3729	73718	14294	20481	494642	0.7077	0.7084
2016/2/5 (金)	4465	6668	106062	15120	19432	498618	0.7193	0.7073
2016/2/4 (木)	3274	4282	91138	12678	14741	514918	0.7159	0.7193

NZL Dollar	取扱高			当日含む前5営業日計			参考レート	
	CALL	PUT	FUTURE	CALL	PUT	FUTURE	Open	Close
2016/2/18 (木)	0	0	14701	0	0	85422	0.6630	0.6640
2016/2/17 (水)	0	0	23759	0	0	89356	0.6579	0.6629
2016/2/16 (火)	0	0	12901	0	0	92351	0.6640	0.6579
2016/2/12 (金)	0	0	22622	0	0	79547	0.6731	0.6626
2016/2/11 (木)	0	0	15373	0	0	88149	0.6682	0.6732
2016/2/10 (水)	0	0	17696	0	0	84081	0.6637	0.6683
2016/2/9 (火)	0	0	10955	0	0	99583	0.6619	0.6637
2016/2/8 (月)	0	0	21503	0	0	101491	0.6620	0.6619
2016/2/5 (金)	0	0	18554	0	0	107878	0.6717	0.6634
2016/2/4 (木)	0	0	30875	0	0	110948	0.6662	0.6717

CHE Franc	取扱高			当日含む前5営業日計			参考レート	
	CALL	PUT	FUTURE	CALL	PUT	FUTURE	Open	Close
2016/2/18 (木)	58	66	15894	759	207	131956	1.0075	1.0067
2016/2/17 (水)	146	7	19363	1172	673	151597	1.0114	1.0075
2016/2/16 (火)	164	104	29234	1738	966	176619	1.0134	1.0114
2016/2/12 (金)	40	21	25740	2298	1052	178961	1.0280	1.0241
2016/2/11 (木)	351	9	41725	2369	1268	188494	1.0270	1.0283
2016/2/10 (水)	471	532	35535	2131	1481	188935	1.0272	1.0270
2016/2/9 (火)	712	300	44385	2163	1095	195768	1.0131	1.0272
2016/2/8 (月)	724	190	31576	1497	816	173781	1.0079	1.0131
2016/2/5 (金)	111	237	35273	988	644	167790	1.0062	1.0080
2016/2/4 (木)	113	222	42166	1030	571	170321	0.9940	1.0063

MEX Peso	取扱高			当日含む前5営業日計			参考レート	
	CALL	PUT	FUTURE	CALL	PUT	FUTURE	Open	Close
2016/2/18 (木)	100	30	99276	631	583	492124	5.4974	5.4604
2016/2/17 (水)	383	448	155827	531	553	447236	5.3229	5.4454
2016/2/16 (火)	40	73	67497	181	179	342871	5.3220	5.3018
2016/2/12 (金)	48	32	93978	175	142	321694	5.2311	5.2911
2016/2/11 (木)	60	0	75546	145	136	268666	5.2657	5.2065
2016/2/10 (水)	0	0	54388	160	191	295352	5.3528	5.2951
2016/2/9 (火)	33	74	51462	181	237	305765	5.3618	5.3143
2016/2/8 (月)	34	36	46320	282	165	292099	5.4025	5.3506
2016/2/5 (金)	18	26	40950	273	129	282333	0.0548	0.0542
2016/2/4 (木)	75	55	102232	292	132	294259	5.5326	5.4842

過去5日及び過去4週の4本値と各種ピボット

2016/02/15 ~ 2016/02/19

USD/JPY										Demark				Pivot				Fibonacci Zone												
当日のOHLCLから計算される翌日の										TD Range Projection				TD pivot points																
日足	Open	High	Low	Close	値幅/日	引け形態	真の高値	真の安値	予想高値	予想安値	予想高値	予想安値	StopLoss	Support	Pivot	Resistance	StopLoss	3-days AVG	Support Zone 2	Support Zone 1	BP	Resistance Zone 1	Resistance Zone 2							
													LBOp	S2	S1	PP	R1	R2	HBOP											
2016/02/15	113.54	114.73	113.28	114.46	145p	陰線引け	-	-	-	-	112.12	112.70	113.58	114.15	115.03	115.61	116.48			112.15	~ 112.70	113.26	~ 113.43	114.15	114.88	~ 115.05	115.61	~ 116.16		
2016/02/16	114.46	114.88	113.61	114.22	127p	陰線引け	114.88	113.61	114.55	113.28	114.55	113.28	112.32	112.96	113.59	114.24	114.87	115.51	116.14		112.48	~ 112.96	113.45	~ 113.60	114.24	114.87	~ 115.02	115.51	~ 115.99	
2016/02/17	114.23	114.50	113.38	114.11	113p	陰線引け	114.50	113.38	114.30	113.18	114.30	113.18	112.36	112.87	113.49	114.00	114.61	115.12	115.74	114.13	Bear	112.44	~ 112.87	113.30	~ 113.43	114.00	114.56	~ 114.69	115.12	~ 115.55
2016/02/18	114.11	114.32	113.14	113.33	117p	陰線引け	114.32	113.14	113.82	112.65	113.82	112.65	111.70	112.42	112.88	113.60	114.05	114.77	115.22	113.94	Bear	111.98	~ 112.42	112.87	~ 113.01	113.60	114.18	~ 114.32	114.77	~ 115.22
2016/02/19	113.32	113.38	112.31	112.63	107p	陰線引け	113.38	112.31	113.01	111.94	113.01	111.94	111.11	111.71	112.17	112.78	113.24	113.84	114.30	113.46	Bear	111.30	~ 111.71	112.12	~ 112.24	112.78	113.31	~ 113.43	113.84	~ 114.25
週足	Open	High	Low	Close	値幅/週	引け形態	真の高値	真の安値	予想高値	予想安値	予想高値	予想安値	LBOp	S2	S1	PP	R1	R2	HBOP	3-days AVG	Support Zone 2	Support Zone 1	BP	Resistance Zone 1	Resistance Zone 2					
2016/01/25 ~ 2016/01/29	118.74	121.69	117.67	121.07	401p	陰線引け	-	-	-	-	114.59	116.13	118.60	120.14	122.61	124.16	126.63			114.60	~ 116.13	117.66	~ 118.14	120.14	122.15	~ 122.62	124.16	~ 125.69		
2016/02/01 ~ 2016/02/05	121.39	121.49	116.35	116.97	513p	陰線引け	121.49	116.97	119.23	114.72	119.23	114.10	109.92	113.14	115.06	118.27	120.19	123.40	125.32		111.18	~ 113.14	115.10	~ 115.70	118.27	120.84	~ 121.44	123.40	~ 125.36	
2016/02/08 ~ 2016/02/12	116.94	117.53	110.99	113.30	653p	陰線引け	117.53	110.99	115.41	108.88	115.41	108.88	103.82	107.41	110.35	113.94	116.88	120.47	123.42	117.45	Bear	104.91	~ 107.41	109.90	~ 110.67	113.94	117.21	~ 117.98	120.47	~ 122.97
2016/02/15 ~ 2016/02/19	113.54	114.88	112.31	112.63	256p	陰線引け	114.88	112.31	113.76	111.19	113.76	111.19	109.11	110.71	111.67	113.27	114.24	115.84	116.80	115.16	Bear	109.73	~ 110.71	111.69	~ 111.99	113.27	114.56	~ 114.86	115.84	~ 116.82

EUR/JPY										Demark				Pivot				Fibonacci Zone												
当日のOHLCLから計算される翌日の										TD Range Projection				TD pivot points																
日足	Open	High	Low	Close	値幅/日	引け形態	真の高値	真の安値	予想高値	予想安値	予想高値	予想安値	StopLoss	Support	Pivot	Resistance	StopLoss	3-days AVG	Support Zone 2	Support Zone 1	BP	Resistance Zone 1	Resistance Zone 2							
													LBOp	S2	S1	PP	R1	R2	HBOP											
2016/02/15	127.61	127.96	126.26	127.77	70p	陰線引け	-	-	-	-	126.66	126.96	127.37	127.66	128.07	128.37	128.77			126.69	~ 126.96	127.23	~ 127.31	127.66	128.01	~ 128.10	128.37	~ 128.63		
2016/02/16	127.77	128.17	126.63	127.22	153p	陰線引け	128.17	126.63	127.69	126.16	127.69	126.16	124.98	125.81	126.51	127.34	128.04	128.87	129.57		125.22	~ 125.81	126.39	~ 126.57	127.34	128.10	~ 128.28	128.87	~ 129.45	
2016/02/17	127.22	127.40	126.66	126.99	74p	陰線引け	127.40	126.66	127.19	126.46	127.19	126.46	125.89	126.28	126.63	127.02	127.37	127.76	128.11	127.34	Bear	126.00	~ 126.28	126.56	~ 126.65	127.02	127.39	~ 127.47	127.76	~ 128.04
2016/02/18	126.99	127.17	125.60	125.90	157p	陰線引け	127.17	125.60	126.53	124.97	126.53	124.97	123.71	124.66	125.28	126.22	126.85	127.79	128.41	126.86	Bear	124.06	~ 124.66	125.25	~ 125.44	126.22	127.01	~ 127.19	127.79	~ 128.39
2016/02/19	125.90	125.96	125.02	125.38	94p	陰線引け	125.96	125.02	125.67	124.73	125.67	124.73	124.01	124.51	124.95	125.45	125.89	126.39	126.83	126.83	Bear	124.15	~ 124.51	124.87	~ 124.98	125.45	125.92	~ 126.04	126.39	~ 126.75
週足	Open	High	Low	Close	値幅/週	引け形態	真の高値	真の安値	予想高値	予想安値	予想高値	予想安値	LBOp	S2	S1	PP	R1	R2	HBOP	3-days AVG	Support Zone 2	Support Zone 1	BP	Resistance Zone 1	Resistance Zone 2					
2016/01/25 ~ 2016/01/29	128.15	132.31	127.82	131.16	449p	陰線引け	-	-	-	-	124.07	125.94	128.55	130.43	133.04	134.91	137.52			124.23	~ 125.94	127.66	~ 128.19	130.43	132.67	~ 133.20	134.91	~ 136.63		
2016/02/01 ~ 2016/02/05	131.46	132.03	130.08	130.46	195p	陰線引け	132.03	127.82	131.25	127.04	131.25	129.30	127.74	128.91	129.69	130.86	131.63	132.80	133.58		128.17	~ 128.91	129.65	~ 129.88	130.86	131.83	~ 132.06	132.80	~ 133.55	
2016/02/08 ~ 2016/02/12	130.34	130.90	125.79	127.52	511p	陰線引け	130.90	125.79	129.21	124.10	129.21	124.10	120.13	122.96	125.24	128.07	130.35	133.18	135.46	129.79	Bear	121.01	~ 122.96	124.91	~ 125.52	128.07	130.62	~ 131.23	133.18	~ 135.13
2016/02/15 ~ 2016/02/19	127.61	128.17	125.02	125.38	315p	陰線引け	128.17	125.02	126.77	123.63	126.77	123.63	121.07	123.04	124.21	126.19	127.36	129.33	130.50	128.37	Bear	121.84	~ 123.04	124.24	~ 124.62	126.19	127.76	~ 128.13	129.33	~ 130.53

EUR/USD										Demark				Pivot				Fibonacci Zone												
当日のOHLCLから計算される翌日の										TD Range Projection				TD pivot points																
日足	Open	High	Low	Close	値幅/日	引け形態	真の高値	真の安値	予想高値	予想安値	予想高値	予想安値	StopLoss	Support	Pivot	Resistance	StopLoss	3-days AVG	Support Zone 2	Support Zone 1	BP	Resistance Zone 1	Resistance Zone 2							
													LBOp	S2	S1	PP	R1	R2	HBOP											
2016/02/15	1.1239	1.1242	1.1128	1.1164	114p	陰線引け	-	-	-	-	1.1000	1.1064	1.1114	1.1178	1.1228	1.1292	1.1341			1.1021	~ 1.1064	1.1108	~ 1.1121	1.1178	1.1235	~ 1.1248	1.1292	~ 1.1335		
2016/02/16	1.1164	1.1193	1.1125	1.1137	68p	陰線引け	1.1193	1.1125	1.1165	1.1097	1.1165	1.1097	1.1042	1.1083	1.1110	1.1152	1.1179	1.1220	1.1247		1.1057	~ 1.1083	1.1109	~ 1.1117	1.1152	1.1186	~ 1.1194	1.1220	~ 1.1246	
2016/02/17	1.1137	1.1179	1.1106	1.1129	73p	陰線引け	1.1179	1.1106	1.1154	1.1081	1.1154	1.1081	1.1024	1.1065	1.1097	1.1138	1.1170	1.1211	1.1243	1.1156	Bear	1.1037	~ 1.1065	1.1093	~ 1.1102	1.1138	1.1174	~ 1.1183	1.1211	~ 1.1239
2016/02/18	1.1129	1.1150	1.1072	1.1109	78p	陰線引け	1.1150	1.1072	1.1130	1.1051	1.1130	1.1051	1.0993	1.1032	1.1071	1.1110	1.1149	1.1188	1.1227	1.1133	Bear	1.1002	~ 1.1032	1.1062	~ 1.1071	1.1110	1.1149	~ 1.1159	1.1188	~ 1.1218
2016/02/19	1.1109	1.1140	1.1067	1.1132	73p	陰線引け	1.1140	1.1067	1.1122	1.1099	1.1122	1.1099	1.1013	1.1040	1.1086	1.1113	1.1158	1.1185	1.1231	1.1120	Bear	1.1012	~ 1.1040	1.1068	~ 1.1076	1.1113	1.1149	~ 1.1158	1.1185	~ 1.1213
週足	Open	High	Low	Close	値幅/週	引け形態	真の高値	真の安値	予想高値	予想安値	予想高値	予想安値	LBOp	S2	S1	PP	R1	R2	HBOP	3-days AVG	Support Zone 2	Support Zone 1	BP	Resistance Zone 1	Resistance Zone 2					
2016/01/25 ~ 2016/01/29	1.0793	1.0968	1.0790	1.0833	178p	陰線引け	-	-	-	-	1.0581	1.0686	1.0759	1.0864	1.0937	1.1041	1.1115			1.0618	~ 1.0686	1.0754	~ 1.0775	1.0864	1.0952	~ 1.0973	1.1041	~ 1.1109		
2016/02/01 ~ 2016/02/05	1.0830	1.1245	1.0815	1.1153	431p	陰線引け	1.1245	1.0790	1.1427	1.0972	1.1415	1.0984	1.0466	1.0640	1.0897	1.1071	1.1328	1.1502	1.1758		1.0476	~ 1.0640	1.0805	~ 1.0856	1.1071	1.1287	~ 1.1337	1.1502	~ 1.1666	
2016/02/08 ~ 2016/02/12	1.1146	1.1375	1.1087	1.1255	288p	陰線引け	1.1375	1.1087	1.1459	1.1171	1.1459	1.1171	1.0814	1.0951	1.1103	1.1239	1.1391	1.1528	1.1680	1.1058	Bull	1.0840	~ 1.0951	1.1061	~ 1.1095	1.1239	1.1383	~ 1.1417	1.1528	~ 1.1638
2016/02/15 ~ 2016/02/19	1.1239	1.1242	1.1067	1.1132	175p	陰線引け	1.1255	1.1067	1.1193	1.1005	1.1187	1.1012	1.0877	1.0972	1.1052	1.1147	1.1227	1.1322	1.1402	1.1152	Bear	1.0905	~ 1.0972	1.1039	~ 1.1059	1.1147	1.1234	~ 1.1255	1.1322	~ 1.1389

IMM扱い8通貨/ダウ/日経/金/オイル/主要クロス円の過去5日及び過去5週の4本値

AUDUSD 5					CADUSD 5					CHFUSD 5				
Date	Open	High	Low	Close	Date	Open	High	Low	Close	Date	Open	High	Low	Close
2016/02/19	0.7152	0.7157	0.7070	0.7149	2016/02/19	0.7283	0.7285	0.7222	0.7261	2016/02/19	1.0070	1.0112	1.0033	1.0099
2016/02/18	0.7174	0.7182	0.7133	0.7153	2016/02/18	0.7305	0.7324	0.7272	0.7283	2016/02/18	1.0075	1.0096	1.0032	1.0067
2016/02/17	0.7114	0.7187	0.7084	0.7173	2016/02/17	0.7211	0.7317	0.7195	0.7305	2016/02/17	1.0114	1.0149	1.0059	1.0075
2016/02/16	0.7137	0.7182	0.7082	0.7113	2016/02/16	0.7228	0.7295	0.7188	0.7211	2016/02/16	1.0134	1.0155	1.0105	1.0114
2016/02/15	0.7107	0.7172	0.7106	0.7137	2016/02/15	0.7216	0.7247	0.7215	0.7228	2016/02/15	1.0228	1.0233	1.0113	1.0134

CNYUSD 5					EURUSD 5					GBPUSD 5				
Date	Open	High	Low	Close	Date	Open	High	Low	Close	Date	Open	High	Low	Close
2016/02/19	0.1533	0.1533	0.1532	0.1532	2016/02/19	1.1109	1.1140	1.1067	1.1132	2016/02/19	1.4331	1.4374	1.4248	1.4367
2016/02/18	0.1532	0.1535	0.1531	0.1533	2016/02/18	1.1129	1.1150	1.1072	1.1109	2016/02/18	1.4288	1.4394	1.4257	1.4331
2016/02/17	0.1534	0.1534	0.1531	0.1532	2016/02/17	1.1137	1.1179	1.1106	1.1129	2016/02/17	1.4305	1.4339	1.4236	1.4288
2016/02/16	0.1538	0.1539	0.1534	0.1534	2016/02/16	1.1164	1.1193	1.1125	1.1137	2016/02/16	1.4437	1.4516	1.4279	1.4305
2016/02/15	0.1535	0.1542	0.1531	0.1537	2016/02/15	1.1239	1.1242	1.1128	1.1164	2016/02/15	1.4504	1.4536	1.4414	1.4439

JPYUSD 5					MXNUSD 5					NZDUSD 5				
Date	Open	High	Low	Close	Date	Open	High	Low	Close	Date	Open	High	Low	Close
2016/02/19	0.8824	0.8904	0.8820	0.8878	2016/02/19	0.0546	0.0550	0.0545	0.0549	2016/02/19	0.6640	0.6645	0.6566	0.6636
2016/02/18	0.8764	0.8838	0.8748	0.8824	2016/02/18	0.0550	0.0553	0.0546	0.0546	2016/02/18	0.6630	0.6668	0.6606	0.6640
2016/02/17	0.8754	0.8820	0.8733	0.8764	2016/02/17	0.0532	0.0554	0.0532	0.0545	2016/02/17	0.6579	0.6650	0.6554	0.6629
2016/02/16	0.8737	0.8802	0.8705	0.8755	2016/02/16	0.0532	0.0534	0.0529	0.0530	2016/02/16	0.6640	0.6676	0.6546	0.6579
2016/02/15	0.8808	0.8828	0.8716	0.8737	2016/02/15	0.0531	0.0532	0.0529	0.0532	2016/02/15	0.6626	0.6677	0.6624	0.6638

Nikkei 225 - Japonia (NIKKEI) 5					出来高	
Date	Open	High	Low	Close	(ドル建て終値)	出来高
2016/02/19	16050.40	16050.46	15799.35	15967.17	141.36	1617082752 2291460200
2016/02/18	16138.08	16337.59	16118.80	16196.80	142.15	1877781248 2628207800
2016/02/17	16035.35	16214.46	15632.12	15836.36	139.55	2040959616 2840083100
2016/02/16	15849.47	16341.56	15809.58	16054.43	140.23	2248919552 3158647800
2016/02/15	15248.38	16155.10	15243.88	16022.58	140.86	2322380544 3280188500
週4本値	15248.38	16341.56	15243.88	15967.17	141.36	(N225銘柄計) (東証一部全体計)

XAUUSD 5					
Date	Open	High	Low	Close	Volume
2016/02/19	1230.75	1234.75	1220.08	1229.46	0
2016/02/18	1207.99	1240.02	1201.04	1230.90	0
2016/02/17	1197.76	1213.86	1195.97	1209.41	0
2016/02/16	1207.65	1217.23	1191.19	1200.80	0
2016/02/15	1232.78	1232.80	1202.20	1209.36	0
週4本値	1232.78	1240.02	1191.19	1229.46	

Dow Jones Industrial - USA (DJIA)					5営業日以内に休業日あり	
Date	Open	High	Low	Close	出来高	出来高
2016/02/19	16410.96	16410.96	16278.00	16391.99	134344283	134344283
2016/02/18	16483.76	16511.84	16390.43	16413.43	104951345	104951345
2016/02/17	16217.98	16486.12	16217.98	16453.83	124084889	124084889
2016/02/16	16012.39	16196.41	16012.39	16196.41	142030809	142030809
2016/02/12	15691.62	15974.04	15691.62	15973.84	132550833	132550833
週4本値	15691.62	16511.84	15691.62	16391.99	134344283	134344283

Historical Data by **Stooq**
 Historical Data by **MarketNewsline**
 Arrangement by **FX_勝てば官軍?**

Crude Light Oil 5						
Date	Open	High	Low	Close	Volume	Volume
2016/02/19	32.75	32.98	31.36	31.95	0	0
2016/02/18	31.29	31.95	30.27	30.64	0	0
2016/02/17	29.14	31.46	28.74	31.44	0	0
2016/02/16	30.39	31.43	28.71	29.13	1579521	1579521
2016/02/15	29.18	30.15	28.97	29.77	1566873	1566873
週4本値	29.18	32.98	28.71	31.95		

USDJPY 5					EURJPY 5					GBPJPY 5				
日付	始値	高値	安値	終値	日付	始値	高値	安値	終値	日付	始値	高値	安値	終値
2016/02/19	113.32	113.38	112.31	112.63	2016/02/19	125.90	125.96	125.02	125.38	2016/02/19	162.41	162.51	160.74	161.82
2016/02/18	114.11	114.32	113.14	113.33	2016/02/18	126.99	127.17	125.60	125.90	2016/02/18	163.03	163.97	162.05	162.42
2016/02/17	114.23	114.50	113.38	114.11	2016/02/17	127.22	127.40	126.66	126.99	2016/02/17	163.41	163.88	161.59	163.03
2016/02/16	114.46	114.88	113.61	114.22	2016/02/16	127.77	128.17	126.63	127.22	2016/02/16	165.24	166.09	162.45	163.40
2016/02/15	113.54	114.73	113.28	114.46	2016/02/15	127.61	127.96	127.26	127.77	2016/02/15	164.67	165.76	164.38	165.26

USDJPY Weekly 28					EURJPY Weekly 28					GBPJPY Weekly 28				
日付	始値	高値	安値	終値	日付	始値	高値	安値	終値	日付	始値	高値	安値	終値
2016/02/19	113.54	114.88	112.31	112.63	2016/02/19	127.61	128.17	125.02	125.38	2016/02/19	164.67	166.09	160.74	161.82
2016/02/12	116.94	117.53	110.99	113.30	2016/02/12	130.34	130.90	125.79	127.52	2016/02/12	169.59	170.64	159.83	164.38
2016/02/05	121.39	121.49	116.35	116.97	2016/02/05	131.46	132.03	130.08	130.46	2016/02/05	172.82	175.03	169.00	169.61
2016/01/29	118.74	121.69	117.67	121.07	2016/01/29	128.15	132.31	127.82	131.16	2016/01/29	169.41	174.18	166.98	172.51
2016/01/22	116.91	118.87	115.98	118.81	2016/01/22	127.57	128.56	126.18	128.28	2016/01/22	166.70	170.36	164.00	169.64

先週のIMM取り扱い対ドル8通貨チャート

※ 赤点線は週最高値/青点線は週最低値、BB中心線はSMA21

2016/02/15 ~ 2016/02/19

Chart by OANDA Japan MetaTrader4

