

JAPANESE YEN - CHICAGO MERCANTILE EXCHANGE

Code-097741

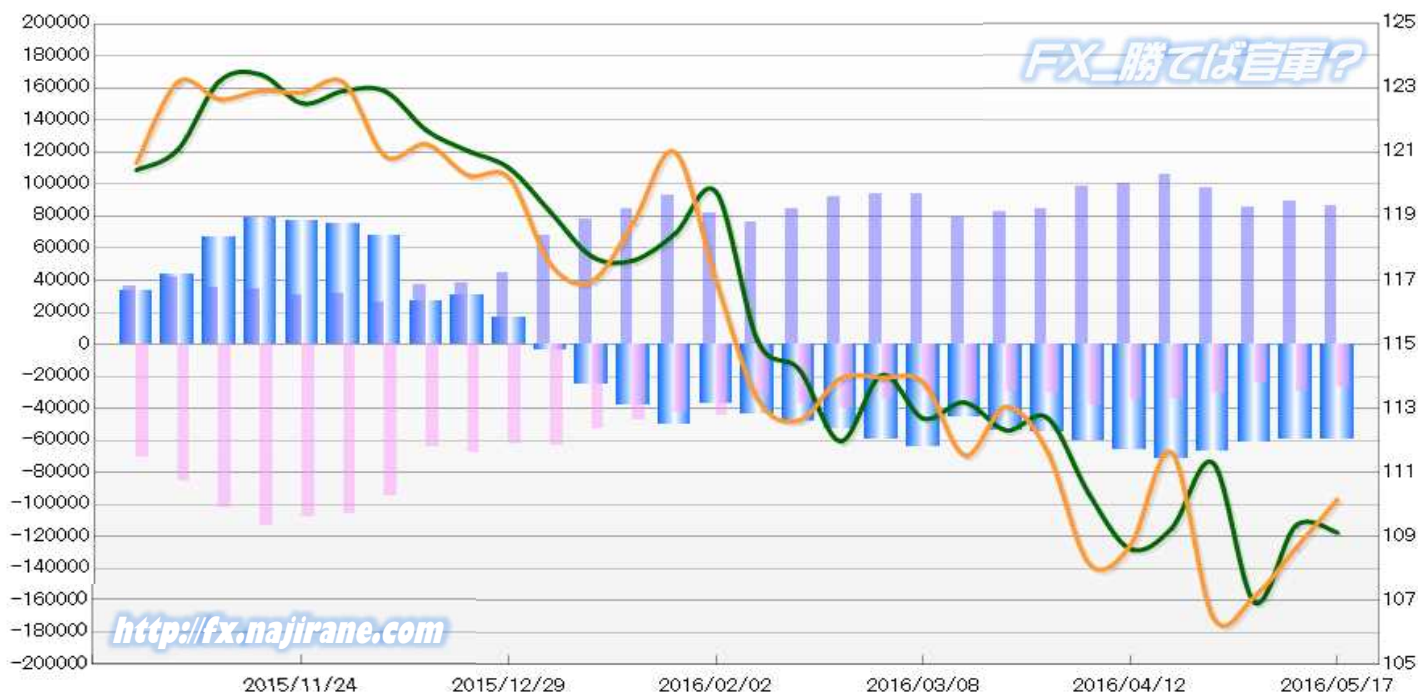
2015/11/24 ~ 2016/05/17

2016/05/20 NYクロース時公表値

Report_Date	Non Commercial Positions												火曜日 引け値	金曜日 引け値
	Long	増減	増減(%)	Short	増減	増減(%)	売り越し	増減	増減(%)	売買計	増減	増減(%)		
2016/05/17	86165	-2732	-3.1%	27246	-2604	-8.7%	-58919	-128	-0.2%	113411	-5336	-4.5%	109.13	110.16
2016/05/10	88897	3270	3.8%	29850	5744	23.8%	-59047	-2474	-4.0%	118747	9014	8.2%	109.35	108.65
2016/05/03	85627	-11843	-12.2%	24106	-6866	-22.2%	-61521	-4977	-7.5%	109733	-18709	-14.6%	106.95	107.14
2016/04/26	97470	-8240	-7.8%	30972	-2868	-8.5%	-66498	-5372	-7.5%	128442	-11108	-8.0%	111.30	106.48
2016/04/19	105710	5590	5.6%	33840	-90	-0.3%	-71870	5680	8.6%	139550	5500	4.1%	109.27	111.62
2016/04/12	100120	1990	2.0%	33930	-4127	-10.8%	-66190	6117	10.2%	134050	-2137	-1.6%	108.62	108.73
2016/04/05	98130	13260	15.6%	38057	7574	24.8%	-60073	5686	10.5%	136187	20834	18.1%	110.34	108.17
2016/03/29	84870	2058	2.5%	30483	1017	3.5%	-54387	1041	2.0%	115353	3075	2.7%	112.71	111.65
2016/03/22	82812	3386	4.3%	29466	-4471	-13.2%	-53346	7857	17.3%	112278	-1085	-1.0%	112.32	113.06
2016/03/15	79426	-14441	-15.4%	33937	4403	14.9%	-45489	-18844	-29.3%	113363	-10038	-8.1%	113.19	111.54
2016/03/08	93867	-203	-0.2%	29534	-4911	-14.3%	-64333	4708	7.9%	123401	-5114	-4.0%	112.69	113.81
2016/03/01	94070	1694	1.8%	34445	-5197	-13.1%	-59625	6891	13.1%	128515	-3503	-2.7%	114.05	113.96
2016/02/23	92376	7858	9.3%	39642	3025	8.3%	-52734	4833	10.1%	132018	10883	9.0%	111.98	113.94
2016/02/16	84518	8707	11.5%	36617	4038	12.4%	-47901	4669	10.8%	121135	12745	11.8%	114.22	112.63
2016/02/09	75811	-6297	-7.7%	32579	-12284	-27.4%	-43232	5987	16.1%	108390	-18581	-14.6%	115.11	113.30
2016/02/02	82108	-10520	-11.4%	44863	2261	5.3%	-37245	-12781	-25.5%	126971	-8259	-6.1%	119.75	116.97
2016/01/26	92628	8143	9.6%	42602	-4230	-9.0%	-50026	12373	32.9%	135230	3913	3.0%	118.45	121.00
2016/01/19	84485	6100	7.8%	46832	-6287	-11.8%	-37653	12387	49.0%	131317	-187	-0.1%	117.62	118.81
2016/01/12	78385	10914	16.2%	53119	-10249	-16.2%	-25266	21163	515.8%	131504	665	0.5%	117.74	116.98
2016/01/05	67471	22463	49.9%	63368	1134	1.8%	-4103	-21329	-123.8%	130839	23597	22.0%	119.12	117.49
2015/12/29	45008	7331	19.5%	62234	-5810	-8.5%	17226	-13141	-43.3%	107242	1521	1.4%	120.50	120.19
2015/12/22	37677	376	1.0%	68044	4163	6.5%	30367	3787	14.2%	105721	4539	4.5%	121.04	120.28
2015/12/15	37301	10901	41.3%	63881	-30569	-32.4%	26580	-41470	-60.9%	101182	-19668	-16.3%	121.68	121.25
2015/12/08	26400	-4828	-15.5%	94450	-11679	-11.0%	68050	-6851	-9.1%	120850	-16507	-12.0%	122.90	120.87
2015/12/01	31228	951	3.1%	106129	-1484	-1.4%	74901	-2435	-3.1%	137357	-533	-0.4%	122.91	123.17
2015/11/24	30277			107613			77336			137890			122.52	122.86

JAPANESE YEN - CHICAGO MERCANTILE EXCHANGE
FUTURES ONLY POSITIONS

— 金曜終値 — 火曜終値 — Short枚数 — Long枚数 ■ 売り越し枚数(マイナスの場合は買越しと読替え)



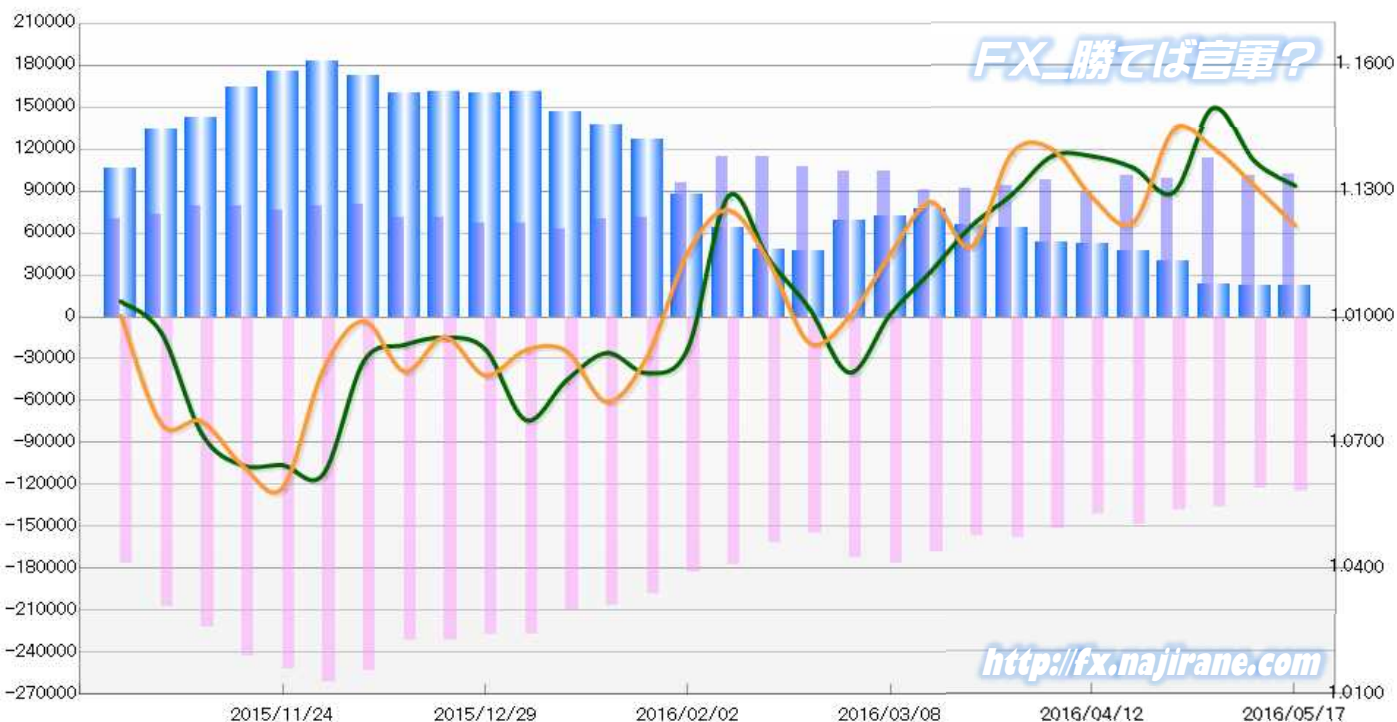
EURO FX - CHICAGO MERCANTILE EXCHANGE
2015/11/24 ~ 2016/05/17

Code-099741
2016/05/20 NYクローズ時公表値

Report_Date	Non Commercial Positions												火曜日 引け値	金曜日 引け値
	Long	増減		Short	増減		売り越し	増減		売買計	増減			
2016/05/17	101723	446	0.4%	124310	1161	0.9%	22587	715	3.3%	226033	1607	0.7%	1.1313	1.1218
2016/05/10	101277	-11757	-10.4%	123149	-13504	-9.9%	21872	-1747	-7.4%	224426	-25261	-10.1%	1.1371	1.1312
2016/05/03	113034	13962	14.1%	136653	-2086	-1.5%	23619	-16048	-40.5%	249687	11876	5.0%	1.1497	1.1401
2016/04/26	99072	-2139	-2.1%	138739	-9389	-6.3%	39667	-7250	-15.5%	237811	-11528	-4.6%	1.1297	1.1446
2016/04/19	101211	11995	13.4%	148128	6861	4.9%	46917	-5134	-9.9%	249339	18856	8.2%	1.1356	1.1225
2016/04/12	89216	-8798	-9.0%	141267	-10234	-6.8%	52051	-1436	-2.7%	230483	-19032	-7.6%	1.1383	1.1284
2016/04/05	98014	4288	4.6%	151501	-6036	-3.8%	53487	-10324	-16.2%	249515	-1748	-0.7%	1.1384	1.1400
2016/03/29	93726	2392	2.6%	157537	150	0.1%	63811	-2242	-3.4%	251263	2542	1.0%	1.1292	1.1391
2016/03/22	91334	981	1.1%	157387	-10521	-6.3%	66053	-11502	-14.8%	248721	-9540	-3.7%	1.1217	1.1168
2016/03/15	90353	-13812	-13.3%	167908	-8164	-4.6%	77555	5648	7.9%	258261	-21976	-7.8%	1.1108	1.1274
2016/03/08	104165	200	0.2%	176072	3566	2.1%	71907	3366	4.9%	280237	3766	1.4%	1.1006	1.1150
2016/03/01	103965	-3601	-3.3%	172506	18083	11.7%	68541	21684	46.3%	276471	14482	5.5%	1.0867	1.1002
2016/02/23	107566	-6404	-5.6%	154423	-7752	-4.8%	46857	-1348	-2.8%	261989	-14156	-5.1%	1.1020	1.0938
2016/02/16	113970	-637	-0.6%	162175	-15746	-8.8%	48205	-15109	-23.9%	276145	-16383	-5.6%	1.1137	1.1132
2016/02/09	114607	18595	19.4%	177921	-5164	-2.8%	63314	-23759	-27.3%	292528	13431	4.8%	1.1288	1.1255
2016/02/02	96012	24566	34.4%	183085	-15576	-7.8%	87073	-40142	-31.6%	279097	8990	3.3%	1.0925	1.1153
2016/01/26	71446	1997	2.9%	198661	-7803	-3.8%	127215	-9800	-7.2%	270107	-5806	-2.1%	1.0866	1.0907
2016/01/19	69449	6287	10.0%	206464	-3149	-1.5%	137015	-9436	-6.4%	275913	3138	1.2%	1.0914	1.0798
2016/01/12	63162	-3695	-5.5%	209613	-17887	-7.9%	146451	-14192	-8.8%	272775	-21582	-7.3%	1.0848	1.0919
2016/01/05	66857	-116	-0.2%	227500	-23	0.0%	160643	93	0.1%	294357	-139	0.0%	1.0754	1.0921
2015/12/29	66973	-3536	-5.0%	227523	-4033	-1.7%	160550	-497	-0.3%	294496	-7569	-2.5%	1.0923	1.0861
2015/12/22	70509	-786	-1.1%	231556	300	0.1%	161047	1086	0.7%	302065	-486	-0.2%	1.0951	1.0952
2015/12/15	71295	-9083	-11.3%	231256	-21453	-8.5%	159961	-12370	-7.2%	302551	-30536	-9.2%	1.0933	1.0870
2015/12/08	80378	1596	2.0%	252709	-8918	-3.4%	172331	-10514	-5.8%	333087	-7322	-2.2%	1.0894	1.0990
2015/12/01	78782	2486	3.3%	261627	9847	3.9%	182845	7361	4.2%	340409	12333	3.8%	1.0625	1.0874
2015/11/24	76296			251780			175484			328076			1.0646	1.0593

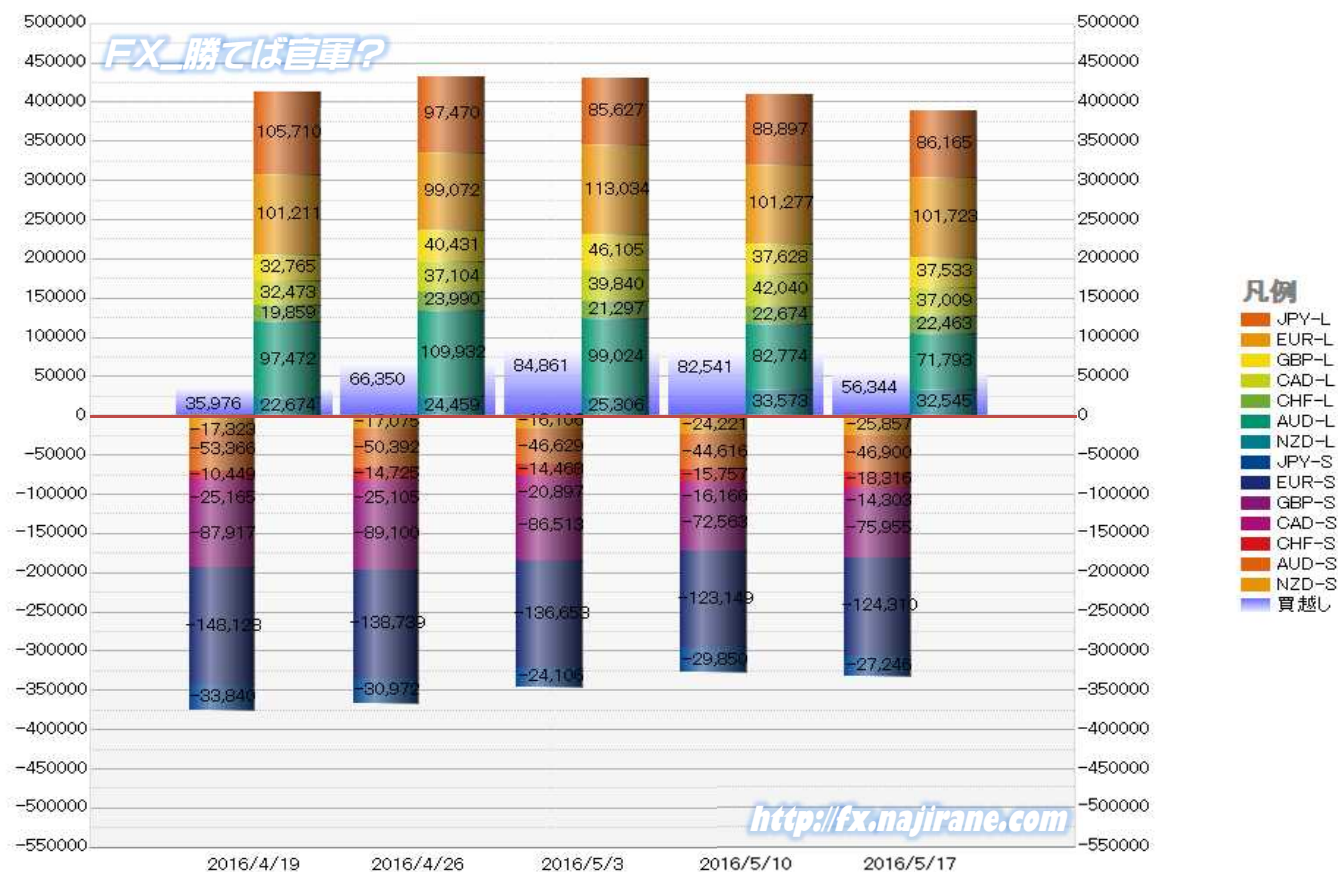
EURO FX - CHICAGO MERCANTILE EXCHANGE
FUTURES ONLY POSITIONS

— 金曜締め週終値 — 火曜締め週終値 — Short枚数 — Long枚数 — 売り越し枚数(マイナスの場合は買越しと読替え)



	2016/04/19			2016/04/26			2016/05/03			2016/05/10			2016/05/17		
	Long	Short	売り越し	Long	Short	売り越し	Long	Short	売り越し	Long	Short	売り越し	Long	Short	売り越し
JPY	105710	33840	-71870	97470	30972	-66498	85627	24106	-61521	88897	29850	-59047	86165	27246	-58919
	前週比 枚数増減 (枚)			-8240	-2868	-5372	-11843	-6866	-4977	3270	5744	-2474	-2732	-2604	-128
	前週比 枚数増減 (%)			-7.79%	-8.48%	-7.47%	-12.15%	-22.17%	-7.48%	3.82%	23.83%	-4.02%	-3.07%	-8.72%	-0.22%
EUR	101211	148128	46917	99072	138739	39667	113034	136653	23619	101277	123149	21872	101723	124310	22587
	前週比 枚数増減 (枚)			-2139	-9389	-7250	13962	-2086	-16048	-11757	-13504	-1747	446	1161	715
	前週比 枚数増減 (%)			-2.11%	-6.34%	-15.45%	14.09%	-1.50%	-40.46%	-10.40%	-9.88%	-7.40%	0.44%	0.94%	3.27%
GBP	32765	87917	55152	40431	89100	48669	46105	86513	40408	37628	72563	34935	37533	75955	38422
	前週比 枚数増減 (枚)			7666	1183	-6483	5674	-2587	-8261	-8477	-13950	-5473	-95	3392	3487
	前週比 枚数増減 (%)			23.40%	1.35%	-11.75%	14.03%	-2.90%	-16.97%	-18.39%	-16.12%	-13.54%	-0.25%	4.67%	9.98%
AUD	97472	53366	-44106	109932	50392	-59540	99024	46629	-52395	82774	44616	-38158	71793	46900	-24893
	前週比 枚数増減 (枚)			12460	-2974	15434	-10908	-3763	-7145	-16250	-2013	-14237	-10981	2284	-13265
	前週比 枚数増減 (%)			12.78%	-5.57%	34.99%	-9.92%	-7.47%	-12.00%	-16.41%	-4.32%	-27.17%	-13.27%	5.12%	-34.76%
CAD	32473	25165	-7308	37104	25105	-11999	39840	20897	-18943	42040	16166	-25874	37009	14303	-22706
	前週比 枚数増減 (枚)			4631	-60	4691	2736	-4208	6944	2200	-4731	6931	-5031	-1863	-3168
	前週比 枚数増減 (%)			14.26%	-0.24%	64.19%	7.37%	-16.76%	57.87%	5.52%	-22.64%	36.59%	-11.97%	-11.52%	-12.24%
CHF	19859	10449	-9410	23990	14725	-9265	21297	14468	-6829	22674	15757	-6917	22463	18316	-4147
	前週比 枚数増減 (枚)			4131	4276	-145	-2693	-257	-2436	1377	1289	88	-211	2559	-2770
	前週比 枚数増減 (%)			20.80%	40.92%	-1.54%	-11.23%	-1.75%	-26.29%	6.47%	8.91%	1.29%	-0.93%	16.24%	-40.05%
NZD	22674	17323	-5351	24459	17075	-7384	25306	16106	-9200	33573	24221	-9352	32545	25857	-6688
	前週比 枚数増減 (枚)			1785	-248	2033	847	-969	1816	8267	8115	152	-1028	1636	-2664
	前週比 枚数増減 (%)			7.87%	-1.43%	37.99%	3.46%	-5.67%	24.59%	32.67%	50.38%	1.65%	-3.06%	6.75%	-28.49%
MXN	43925	58334	14409	34602	53917	19315	35753	48173	12420	16149	61369	45220	25219	70910	45691
	前週比 枚数増減 (枚)			-9323	-4417	4906	1151	-5744	-6895	-19604	13196	32800	9070	9541	471
	前週比 枚数増減 (%)			-21.22%	-7.57%	34.05%	3.33%	-10.65%	-35.70%	-54.83%	27.39%	264.09%	56.16%	15.55%	1.04%
Total All 8	456089	434522	-21567	467060	420025	-47035	465986	393545	-72441	425012	387691	-37321	414450	403797	-10653
	前週比 枚数増減 (枚)			10971	-14497	25468	-1074	-26480	25406	-40974	-5854	-35120	-10562	16106	-26668
	前週比 枚数増減 (%)			2.41%	-3.34%	118.09%	-0.23%	-6.30%	54.02%	-8.79%	-1.49%	-48.48%	-2.49%	4.15%	-71.46%
Total 7 (MXN除く)	412164	376188	-35976	432458	366108	-66350	430233	345372	-84861	408863	326322	-82541	389231	332887	-56344
	前週比 枚数増減 (枚)			20294	-10080	30374	-2225	-20736	18511	-21370	-19050	-2320	-19632	6565	-26197
	前週比 枚数増減 (%)			4.9%	-2.7%	84.4%	-0.5%	-5.7%	27.9%	-5.0%	-5.5%	-2.7%	-4.8%	2.0%	-31.7%

直近5週 CFTC IMM主要7通貨の構成

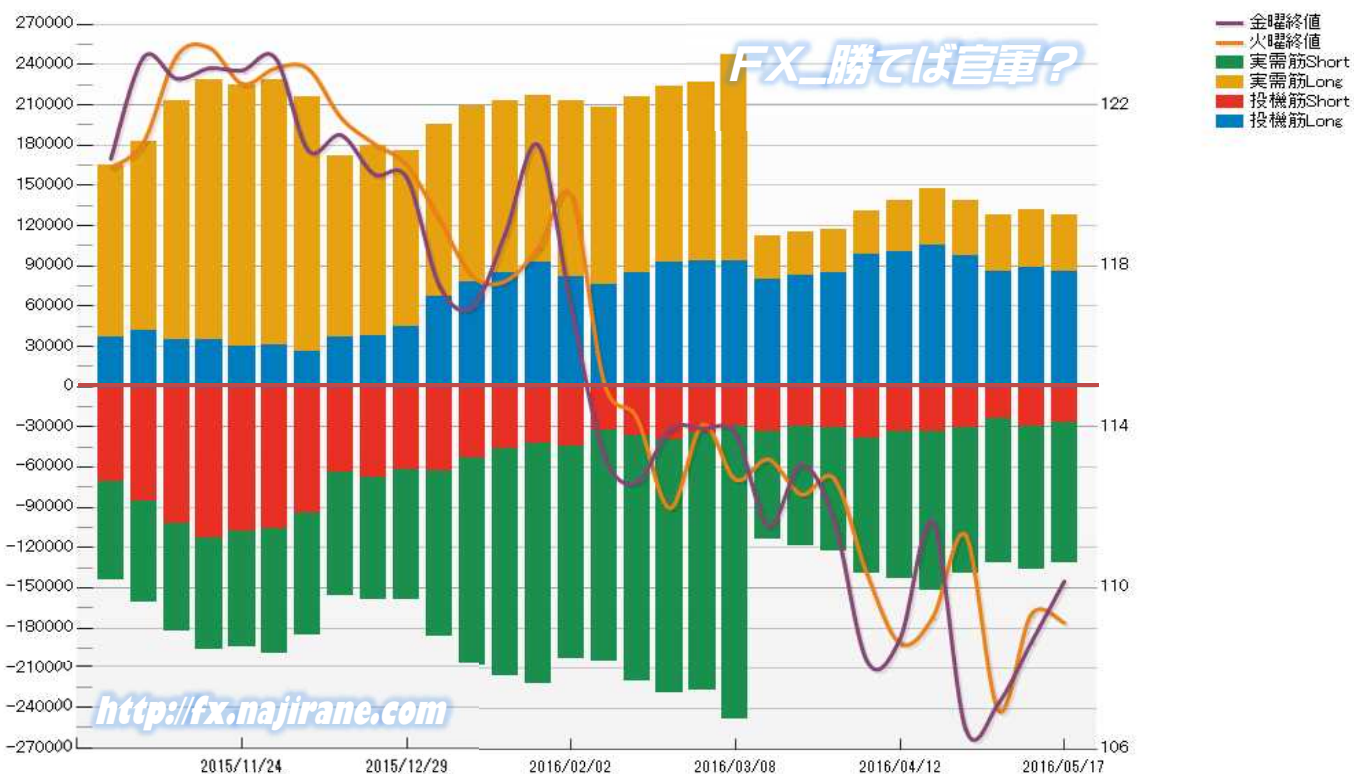


JAPANESE YEN - CHICAGO MERCANTILE EXCHANGE
FUTURES ONLY POSITIONS

Code-097741
2016/05/20 公表値

Date	投機筋集計				実需筋集計				投機筋+実需筋合計				ドル円終値	
	円買い	円売り	売り越し	売買計	円買い	円売り	売り越し	売買計	円買い	円売り	売り越し	売買計	火曜締め	金曜締め
2016/05/17	86165	27246	-58919	113411	41969	104408	62439	146377	128134	131654	3520	259788	109.13	110.16
2016/05/10	88897	29850	-59047	118747	43309	106603	63294	149912	132206	136453	4247	268659	109.35	108.65
2016/05/03	85627	24106	-61521	109733	41904	107399	65495	149303	127531	131505	3974	259036	106.95	107.14
2016/04/26	97470	30972	-66498	128442	40734	108419	67685	149153	138204	139391	1187	277595	111.30	106.48
2016/04/19	105710	33840	-71870	139550	41258	118087	76829	159345	146968	151927	4959	298895	109.27	111.62
2016/04/12	100120	33930	-66190	134050	38652	109410	70758	148062	138772	143340	4568	282112	108.62	108.73
2016/04/05	98130	38057	-60073	136187	32451	101508	69057	133959	130581	139565	8984	270146	110.34	108.17
2016/03/29	84870	30483	-54387	115353	32118	92081	59963	124199	116988	122564	5576	239552	112.71	111.65
2016/03/22	82812	29466	-53346	112278	32265	89776	57511	122041	115077	119242	4165	234319	112.32	113.06
2016/03/15	79426	33937	-45489	113363	32762	79738	46976	112500	112188	113675	1487	225863	113.19	111.54
2016/03/08	93867	29534	-64333	123401	153269	218579	65310	371848	247136	248113	977	495249	112.69	113.81
2016/03/01	94070	34445	-59625	128515	132993	191615	58622	324608	227063	226060	-1003	453123	114.05	113.96
2016/02/23	92376	39642	-52734	132018	131150	188392	57242	319542	223526	228034	4508	451560	111.98	113.94
2016/02/16	84518	36617	-47901	121135	131826	183285	51459	315111	216344	219902	3558	436246	114.22	112.63
2016/02/09	75811	32579	-43232	108390	131862	172663	40801	304525	207673	205242	-2431	412915	115.11	113.30
2016/02/02	82108	44863	-37245	126971	130736	157826	27090	288562	212844	202689	-10155	415533	119.75	116.97
2016/01/26	92628	42602	-50026	135230	124038	178679	54641	302717	216666	221281	4615	437947	118.45	121.00
2016/01/19	84485	46832	-37653	131317	128081	168498	40417	296579	212566	215330	2764	427896	117.62	118.81
2016/01/12	78385	53119	-25266	131504	130859	154704	23845	285563	209244	207823	-1421	417067	117.74	116.98
2016/01/05	67471	63368	-4103	130839	127747	123204	-4543	250951	195218	186572	-8646	381790	119.12	117.49
2015/12/29	45008	62234	17226	107242	131111	96331	-34780	227442	176119	158565	-17554	334684	120.50	120.19
2015/12/22	37677	68044	30367	105721	141911	90973	-50938	232884	179588	159017	-20571	338605	121.04	120.28
2015/12/15	37301	63881	26580	101182	134622	92036	-42586	226658	171923	155917	-16006	327840	121.68	121.25
2015/12/08	26400	94450	68050	120850	189782	91225	-98557	281007	216182	185675	-30507	401857	122.90	120.87
2015/12/01	31228	106129	74901	137357	197457	92536	-104921	289993	228685	198665	-30020	427350	122.91	123.17
2015/11/24	30277	107613	77336	137890	194629	86696	-107933	281325	224906	194309	-30597	419215	122.52	122.86
2015/11/17	34475	113086	78611	147561	194025	82801	-111224	276826	228500	195887	-32613	424387	123.42	122.91
2015/11/10	35081	101969	66888	137050	177813	80127	-97686	257940	212894	182096	-30798	394990	123.21	122.65
2015/11/03	41489	85276	43787	126765	140770	75643	-65127	216413	182259	160919	-21340	343178	121.08	123.19
2015/10/27	36437	70348	33911	106785	128969	73765	-55204	202734	165406	144113	-21293	309519	120.44	120.66

JAPANESE YEN - CHICAGO MERCANTILE EXCHANGE
FUTURES ONLY POSITIONS Code-097741

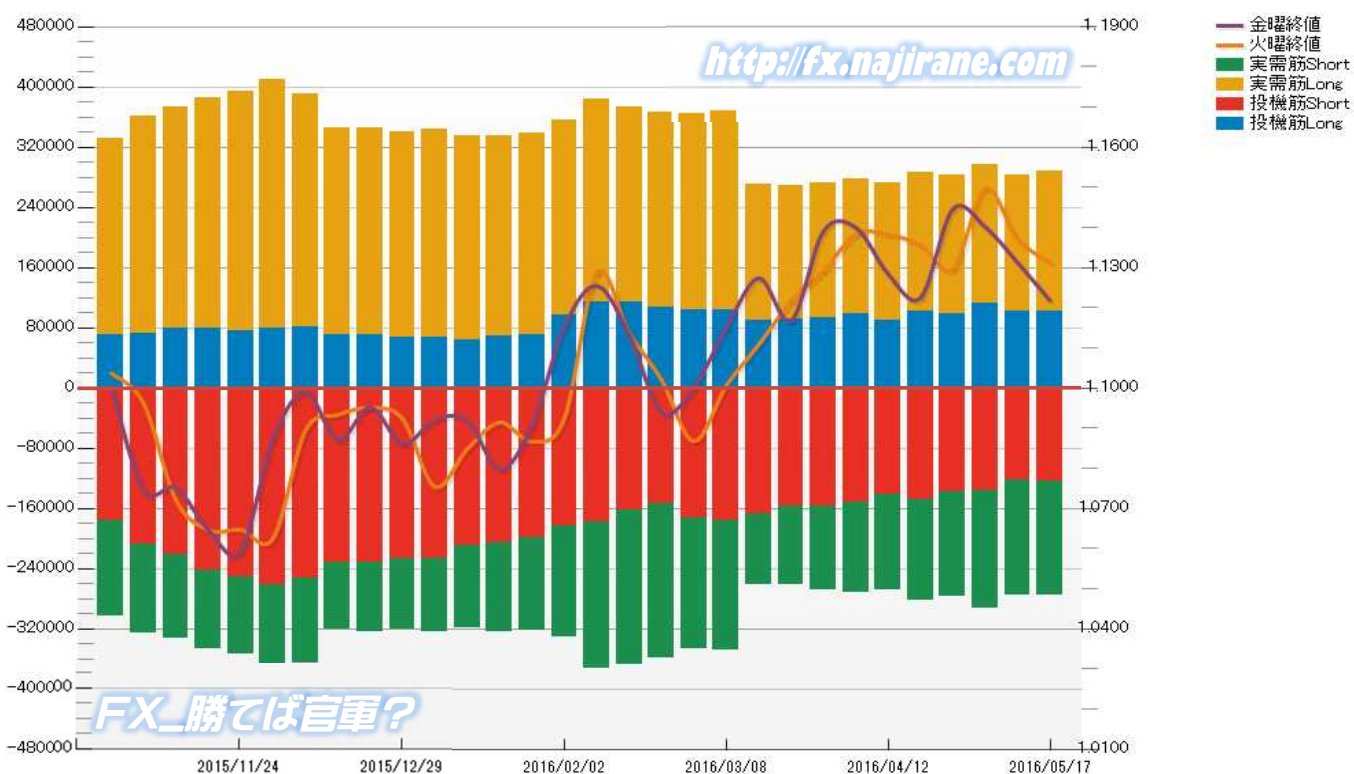


EURO FX - CHICAGO MERCANTILE EXCHANGE
FUTURES ONLY POSITIONS

Code-099741
2016/05/20 公表値

Date	投机筋集計				実需筋集計				投机筋+実需筋合計				ユーロドル終値	
	EUR買い	EUR売り	売り越し	売買計	EUR買い	EUR売り	売り越し	売買計	EUR買い	EUR売り	売り越し	売買計	火曜締め	金曜締め
2016/05/17	101723	124310	22587	226033	186065	151949	-34116	338014	287788	276259	-11529	564047	1.1313	1.1218
2016/05/10	101277	123149	21872	224426	181863	152379	-29484	334242	283140	275528	-7612	558668	1.1371	1.1312
2016/05/03	113034	136653	23619	249687	184524	156966	-27558	341490	297558	293619	-3939	591177	1.1497	1.1401
2016/04/26	99072	138739	39667	237811	182996	138270	-44726	321266	282068	277009	-5059	559077	1.1297	1.1446
2016/04/19	101211	148128	46917	249339	185459	133519	-51940	318978	286670	281647	-5023	568317	1.1356	1.1225
2016/04/12	89216	141267	52051	230483	182596	126793	-55803	309389	271812	268060	-3752	539872	1.1383	1.1284
2016/04/05	98014	151501	53487	249515	180268	120531	-59737	300799	278282	272032	-6250	550314	1.1384	1.1400
2016/03/29	93726	157537	63811	251263	178491	111140	-67351	289631	272217	268677	-3540	540894	1.1292	1.1391
2016/03/22	91334	157387	66053	248721	176950	103926	-73024	280876	268284	261313	-6971	529597	1.1217	1.1168
2016/03/15	90353	167908	77555	258261	180672	92859	-87813	273531	271025	260767	-10258	531792	1.1108	1.1274
2016/03/08	104165	176072	71907	280237	263377	173378	-89999	436755	367542	349450	-18092	716992	1.1006	1.1150
2016/03/01	103965	172506	68541	276471	260901	174403	-86498	435304	364866	346909	-17957	711775	1.0867	1.1002
2016/02/23	107566	154423	46857	261989	258954	205427	-53527	464381	366520	359850	-6670	726370	1.1020	1.0938
2016/02/16	113970	162175	48205	276145	258996	205232	-53764	464228	372966	367407	-5559	740373	1.1137	1.1132
2016/02/09	114607	177921	63314	292528	268586	194562	-74024	463148	383193	372483	-10710	755676	1.1288	1.1255
2016/02/02	96012	183085	87073	279097	259869	147872	-111997	407741	355881	330957	-24924	686838	1.0925	1.1153
2016/01/26	71446	198661	127215	270107	267012	124194	-142818	391206	338458	322855	-15603	661313	1.0866	1.0907
2016/01/19	69449	206464	137015	275913	265334	117867	-147467	383201	334783	324331	-10452	659114	1.0914	1.0798
2016/01/12	63162	209613	146451	272775	271543	109792	-161751	381335	334705	319405	-15300	654110	1.0848	1.0919
2016/01/05	66857	227500	160643	294357	276815	97443	-179372	374258	343672	324943	-18729	668615	1.0754	1.0921
2015/12/29	66973	227523	160550	294496	273701	93279	-180422	366980	340674	320802	-19872	661476	1.0923	1.0861
2015/12/22	70509	231556	161047	302065	275354	93283	-182071	368637	345863	324839	-21024	670702	1.0951	1.0952
2015/12/15	71295	231256	159961	302551	275052	89741	-185311	364793	346347	320997	-25350	667344	1.0933	1.0870
2015/12/08	80378	252709	172331	333087	309680	112572	-197108	422252	390058	365281	-24777	755339	1.0894	1.0990
2015/12/01	78782	261627	182845	340409	330854	106332	-224522	437186	409636	367959	-41677	777595	1.0625	1.0874
2015/11/24	76296	251780	175484	328076	318441	102519	-215922	420960	394737	354299	-40438	749036	1.0646	1.0593
2015/11/17	78898	243075	164177	321973	307454	103302	-204152	410756	386352	346377	-39975	732729	1.0646	1.0646
2015/11/10	78994	221933	142939	300927	294780	110225	-184555	405005	373774	332158	-41616	705932	1.0721	1.0751
2015/11/03	72883	207217	134334	280100	288232	119288	-168944	407520	361115	326505	-34610	687620	1.0962	1.0745
2015/10/27	70351	176285	105934	246636	261683	127233	-134450	388916	332034	303518	-28516	635552	1.1037	1.1003

EURO FX - CHICAGO MERCANTILE EXCHANGE
FUTURES ONLY POSITIONS Code-099741



FX_勝てば官軍?

CME Daily Volume

シカゴ・マーカントイル取引所 取扱高日次データ

FX_勝てば官軍?

<http://fx.najirane.com>

EU Euro		取扱高			当日含む前5営業日計			参考レート	
Date	CALL	PUT	FUTURE	CALL	PUT	FUTURE	Open	Close	
2016/5/19 (木)	8177	15440	168193	52582	61128	741118	1.1218	1.1199	
2016/5/18 (水)	13512	15472	181895	50809	53558	703171	1.1312	1.1218	
2016/5/17 (火)	5929	7648	128544	41048	46655	639633	1.1316	1.1313	
2016/5/16 (月)	5213	5029	85481	38290	48507	637213	1.1304	1.1315	
2016/5/13 (金)	19751	17539	177005	40485	50683	670783	1.1375	1.1312	
2016/5/12 (木)	6404	7870	130246	35856	60191	682745	1.1427	1.1375	
2016/5/11 (水)	3751	8569	118357	47534	72778	724392	1.1371	1.1425	
2016/5/10 (火)	3171	9500	126124	52414	75094	797684	1.1382	1.1371	
2016/5/9 (月)	7408	7205	119051	70290	86979	902616	1.1397	1.1382	
2016/5/6 (金)	15122	27047	188967	83693	102882	932114	1.1404	1.1401	

AUS Dollar		取扱高			当日含む前5営業日計			参考レート	
Date	CALL	PUT	FUTURE	CALL	PUT	FUTURE	Open	Close	
2016/5/19 (木)	2732	2797	115280	10782	14139	521608	0.7224	0.7223	
2016/5/18 (水)	3264	2624	128404	9776	13459	504647	0.7325	0.7224	
2016/5/17 (火)	1325	2210	104422	8301	12646	467523	0.7291	0.7325	
2016/5/16 (月)	937	2067	70237	8895	12527	458570	0.7257	0.7291	
2016/5/13 (金)	2524	4441	103265	10378	12692	475691	0.7322	0.7268	
2016/5/12 (木)	1726	2117	98319	11349	15315	497622	0.7377	0.7320	
2016/5/11 (水)	1789	1811	91280	12893	23957	489294	0.7372	0.7376	
2016/5/10 (火)	1919	2091	95469	14905	26145	511270	0.7314	0.7372	
2016/5/9 (月)	2420	2232	87358	16786	31495	587813	0.7364	0.7314	
2016/5/6 (金)	3495	7064	125196	16427	32817	572448	0.7465	0.7367	

CHE Franc		取扱高			当日含む前5営業日計			参考レート	
Date	CALL	PUT	FUTURE	CALL	PUT	FUTURE	Open	Close	
2016/5/19 (木)	8	57	23366	375	783	97016	1.0125	1.0094	
2016/5/18 (水)	329	268	23330	399	749	89915	1.0200	1.0125	
2016/5/17 (火)	20	271	18582	162	481	80303	1.0229	1.0200	
2016/5/16 (月)	2	98	10012	386	570	78996	1.0248	1.0229	
2016/5/13 (金)	16	89	21726	502	554	84174	1.0301	1.0257	
2016/5/12 (木)	32	23	16265	693	596	83526	1.0299	1.0301	
2016/5/11 (水)	92	0	13718	835	996	88970	1.0245	1.0299	
2016/5/10 (火)	244	360	17275	762	1289	93048	1.0295	1.0245	
2016/5/9 (月)	118	82	15190	970	1246	106418	1.0281	1.0295	
2016/5/6 (金)	207	131	21078	890	1553	107751	1.0330	1.0288	

JPN Yen		取扱高			当日含む前5営業日計			参考レート	
Date	CALL	PUT	FUTURE	CALL	PUT	FUTURE	Open	Close	
2016/5/19 (木)	2867	3393	100392	28885	23570	514642	110.19	109.96	
2016/5/18 (水)	7706	9707	129744	29207	24268	511263	109.13	110.19	
2016/5/17 (火)	8457	3153	104925	24320	17411	465807	109.07	109.13	
2016/5/16 (月)	4277	3946	65540	20003	22220	461194	108.67	109.06	
2016/5/13 (金)	5578	3371	114041	18785	22877	497855	109.04	108.65	
2016/5/12 (木)	3189	4091	97013	27009	27443	502128	108.46	109.04	
2016/5/11 (水)	2819	2850	84288	33268	27777	478686	109.35	108.47	
2016/5/10 (火)	4140	7962	100312	32991	31101	500255	108.49	109.35	
2016/5/9 (月)	3059	4603	102201	33512	36026	509448	107.21	108.49	
2016/5/6 (金)	13802	7937	118314	33804	35735	510817	107.27	107.14	

CAN Dollar		取扱高			当日含む前5営業日計			参考レート	
Date	CALL	PUT	FUTURE	CALL	PUT	FUTURE	Open	Close	
2016/5/19 (木)	3685	3931	83708	12165	11183	320211	0.7675	0.7634	
2016/5/18 (水)	4070	3414	80261	10288	9385	303752	0.7748	0.7675	
2016/5/17 (火)	2615	2448	59532	8872	7788	287782	0.7755	0.7748	
2016/5/16 (月)	891	832	39006	8528	8597	287240	0.7724	0.7755	
2016/5/13 (金)	904	558	57704	9671	9760	315709	0.7787	0.7729	
2016/5/12 (木)	1808	2133	67249	14032	12981	344606	0.7781	0.7787	
2016/5/11 (水)	2654	1817	64291	16167	14907	353317	0.7745	0.7780	
2016/5/10 (火)	2271	3257	58990	17858	18321	398664	0.7716	0.7745	
2016/5/9 (月)	2034	1995	67475	17881	18694	436673	0.7735	0.7716	
2016/5/6 (金)	5265	3779	86601	16621	18371	424680	0.7773	0.7742	

NZL Dollar		取扱高			当日含む前5営業日計			参考レート	
Date	CALL	PUT	FUTURE	CALL	PUT	FUTURE	Open	Close	
2016/5/19 (木)	0	0	25435	0	0	100612	0.6738	0.6739	
2016/5/18 (水)	0	0	19481	0	0	92864	0.6810	0.6738	
2016/5/17 (火)	0	0	12262	0	0	88215	0.6785	0.6810	
2016/5/16 (月)	0	0	20137	0	0	91553	0.6766	0.6785	
2016/5/13 (金)	0	0	15549	0	0	99429	0.6818	0.6772	
2016/5/12 (木)	0	0	20786	0	0	103699	0.6818	0.6818	
2016/5/11 (水)	0	0	22819	0	0	103786	0.6797	0.6817	
2016/5/10 (火)	0	0	20138	0	0	109951	0.6765	0.6797	
2016/5/9 (月)	0	0	24407	0	0	118577	0.6829	0.6766	
2016/5/6 (金)	0	0	15636	0	0	112106	0.6882	0.6842	

MEX Peso		取扱高			当日含む前5営業日計			参考レート	
Date	CALL	PUT	FUTURE	CALL	PUT	FUTURE	Open	Close	
2016/5/19 (木)	18	1	49689	140	404	237093	5.4155	5.4205	
2016/5/18 (水)	83	207	49844	122	403	238373	5.4326	5.4177	
2016/5/17 (火)	14	37	52564	61	203	237553	5.4618	5.4674	
2016/5/16 (月)	25	8	41871	97	211	238088	5.5074	5.4859	
2016/5/13 (金)	0	151	43125	167	229	261976	5.5388	5.5010	
2016/5/12 (木)	0	0	50969	262	146	297768	5.5811	5.5639	
2016/5/11 (水)	22	7	49024	296	182	300360	5.5273	5.5650	
2016/5/10 (火)	50	45	53099	325	295	359809	5.5199	5.5641	
2016/5/9 (月)	95	26	65759	330	330	387019	5.6038	5.4981	
2016/5/6 (金)	95	68	78917	235	314	355911	5.5780	5.5954	

過去5日及び過去4週の4本値と各種ピボット

2016/05/16 ~ 2016/05/20

USD/JPY											Demark				Pivot				Fibonacci Zone												
当日のOHLCLから計算される翌日の											TD Range Projection				TD pivot points																
日足	Open	High	Low	Close	値幅/日	引け形態	真の高値	真の安値	予想高値	予想安値	予想高値	予想安値	StopLoss	Support	Pivot	Resistance	StopLoss	3-days AVG	Support Zone 2	Support Zone 1	BP	Resistance Zone 1	Resistance Zone 2								
													LBOp	S2	S1	PP	R1	R2	HBOP												
2016/05/16	108.67	109.09	108.47	109.06	62p	陽線引け	-	-					108.03	108.25	108.66	108.88	109.28	109.50	109.91												
2016/05/17	109.07	109.65	108.85	109.13	80p	陽線引け	109.65	108.85	109.79	108.99	109.79	108.99	107.97	108.41	108.77	109.21	109.57	110.01	110.37												
2016/05/18	109.13	110.26	108.73	110.19	152p	陽線引け	110.26	108.73	110.98	109.46	110.98	109.46	107.67	108.20	109.19	109.72	110.72	111.25	112.24	109.27	Bull	107.62	~ 108.20	108.78	~ 108.96	109.72	110.49	~ 110.67	111.25	~ 111.83	
2016/05/19	110.19	110.38	109.70	109.96	68p	陰線引け	110.38	109.70	110.17	109.49	110.17	109.49	108.97	109.33	109.65	110.02	110.33	110.70	111.01	109.65	Bull	109.07	~ 109.33	109.59	~ 109.67	110.02	110.36	~ 110.44	110.70	~ 110.96	
2016/05/20	109.96	110.59	109.85	110.16	74p	陽線引け	110.59	109.85	110.74	110.00	110.74	110.00	109.07	109.46	109.81	110.20	110.55	110.93	111.28	109.98	Bull	109.18	~ 109.46	109.74	~ 109.83	110.20	110.57	~ 110.65	110.93	~ 111.22	
週足	Open	High	Low	Close	値幅/週	引け形態	真の高値	真の安値	予想高値	予想安値	予想高値	予想安値	LBOp	S2	S1	PP	R1	R2	HBOP	3-days AVG	Support Zone 2	Support Zone 1	BP	Resistance Zone 1	Resistance Zone 2						
2016/04/25 ~ 2016/04/29	111.79	111.88	106.28	106.48	560p	陰線引け	-	-					98.94	102.61	104.54	108.21	110.15	113.81	115.75												
2016/05/02 ~ 2016/05/06	106.33	107.48	105.55	107.14	193p	陽線引け	107.48	106.28	107.91	106.71	108.28	106.35	104.04	104.80	104.50	106.72	107.90	108.65	109.83												
2016/05/09 ~ 2016/05/13	107.21	109.53	107.17	108.65	236p	陽線引け	109.53	107.14	110.28	107.89	110.27	107.91	105.00	106.09	107.37	108.45	109.73	110.81	112.09	107.80	Bull	105.18	~ 106.09	106.99	~ 107.27	108.45	109.63	~ 109.91	110.81	~ 111.72	
2016/05/16 ~ 2016/05/20	108.67	110.59	108.47	110.16	212p	陽線引け	110.59	108.47	111.43	109.31	111.43	109.31	106.77	107.62	108.89	109.74	111.01	111.86	113.12	108.30	Bull	106.81	~ 107.62	108.43	~ 108.68	109.74	110.80	~ 111.05	111.86	~ 112.67	

EUR/JPY											Demark				Pivot				Fibonacci Zone												
当日のOHLCLから計算される翌日の											TD Range Projection				TD pivot points																
日足	Open	High	Low	Close	値幅/日	引け形態	真の高値	真の安値	予想高値	予想安値	予想高値	予想安値	StopLoss	Support	Pivot	Resistance	StopLoss	3-days AVG	Support Zone 2	Support Zone 1	BP	Resistance Zone 1	Resistance Zone 2								
													LBOp	S2	S1	PP	R1	R2	HBOP												
2016/05/16	122.84	123.51	122.62	123.41	89p	陽線引け	-	-					121.96	122.29	122.85	123.18	123.74	124.07	124.63												
2016/05/17	123.41	124.18	123.25	123.45	93p	陽線引け	124.18	123.25	124.28	123.35	124.28	123.35	122.14	122.70	123.07	123.63	124.01	124.56	124.94												
2016/05/18	123.45	123.91	122.97	123.60	95p	陽線引け	123.91	122.97	124.23	123.28	124.23	123.28	122.13	122.55	123.07	123.49	124.02	124.44	124.97	123.43	Bull	122.18	~ 122.55	122.91	~ 123.02	123.49	123.97	~ 124.08	124.44	~ 124.80	
2016/05/19	123.60	123.78	122.95	123.14	83p	陰線引け	123.78	122.95	123.46	122.63	123.46	122.63	121.96	122.46	122.80	123.29	123.63	124.12	124.46	123.47	Bull	122.14	~ 122.46	122.77	~ 122.87	123.29	123.70	~ 123.80	124.12	~ 124.44	
2016/05/20	123.13	124.05	123.06	123.57	99p	陽線引け	124.05	123.06	124.30	123.31	124.30	123.31	122.08	122.57	123.07	123.56	124.06	124.55	125.05	123.45	Bull	122.19	~ 122.57	122.95	~ 123.06	123.56	124.05	~ 124.17	124.55	~ 124.92	
週足	Open	High	Low	Close	値幅/週	引け形態	真の高値	真の安値	予想高値	予想安値	予想高値	予想安値	LBOp	S2	S1	PP	R1	R2	HBOP	3-days AVG	Support Zone 2	Support Zone 1	BP	Resistance Zone 1	Resistance Zone 2						
2016/04/25 ~ 2016/04/29	125.47	126.46	121.68	121.88	479p	陰線引け	-	-					115.43	118.55	120.21	123.34	125.00	128.12	129.78												
2016/05/02 ~ 2016/05/06	121.87	123.52	121.50	122.16	202p	陽線引け	123.52	121.50	123.76	121.92	123.84	121.83	119.24	120.37	121.26	122.39	123.28	124.41	125.30												
2016/05/09 ~ 2016/05/13	122.19	124.65	122.14	122.90	250p	陽線引け	124.65	122.14	125.03	122.52	125.03	122.52	119.31	120.73	121.81	123.23	124.32	125.73	126.82	122.99	Bull	119.77	~ 120.73	121.68	~ 121.98	123.23	124.48	~ 124.78	125.73	~ 126.69	
2016/05/16 ~ 2016/05/20	122.84	124.18	122.62	123.57	156p	陽線引け	124.18	122.62	124.65	123.09	124.65	123.09	121.17	121.90	122.73	123.46	124.29	125.02	125.85	123.03	Bull	121.30	~ 121.90	122.49	~ 122.68	123.46	124.24	~ 124.42	125.02	~ 125.61	

EUR/USD											Demark				Pivot				Fibonacci Zone											
当日のOHLCLから計算される翌日の											TD Range Projection				TD pivot points															
日足	Open	High	Low	Close	値幅/日	引け形態	真の高値	真の安値	予想高値	予想安値	予想高値	予想安値	StopLoss	Support	Pivot	Resistance	StopLoss	3-days AVG	Support Zone 2	Support Zone 1	BP	Resistance Zone 1	Resistance Zone 2							
													LBOp	S2	S1	PP	R1	R2	HBOP											
2016/05/16	1.1304	1.1342	1.1303	1.1315	40p	陽線引け	-	-					1.1258	1.1280	1.1298	1.1320	1.1338	1.1360	1.1378											
2016/05/17	1.1316	1.1346	1.1302	1.1313	44p	陽線引け	1.1346	1.1302	1.1329	1.1286	1.1329	1.1286	1.1251	1.1277	1.1295	1.1320	1.1338	1.1364	1.1382											
2016/05/18	1.1312	1.1316	1.1214	1.1218	102p	陽線引け	1.1316	1.1214	1.1267	1.1165	1.1267	1.1165	1.1080	1.1147	1.1182	1.1249	1.1285	1.1352	1.1387	1.1297	Bear	1.1108	~ 1.1147	1.1186	~ 1.1198	1.1249	1.1300	~ 1.1312	1.1352	~ 1.1391
2016/05/19	1.1218	1.1230	1.1180	1.1199	50p	陽線引け	1.1230	1.1180	1.1214	1.1165	1.1214	1.1165	1.1126	1.1153	1.1176	1.1203	1.1226	1.1253	1.1275	1.1258	Bear	1.1134	~ 1.1153	1.1172	~ 1.1178	1.1203	1.1228	~ 1.1234	1.1253	~ 1.1272
2016/05/20	1.1198	1.1237	1.1197	1.1218	41p	陽線引け	1.1237	1.1197	1.1248	1.1207	1.1248	1.1207	1.1156	1.1176	1.1197	1.1217	1.1238	1.1258	1.1278	1.1223	Bear	1.1161	~ 1.1176	1.1192	~ 1.1197	1.1217	1.1237	~ 1.1242	1.1258	~ 1.1273
週足	Open	High	Low	Close	値幅/週	引け形態	真の高値	真の安値	予想高値	予想安値	予想高値	予想安値	LBOp	S2	S1	PP	R1	R2	HBOP	3-days AVG	Support Zone 2	Support Zone 1	BP	Resistance Zone 1	Resistance Zone 2					
2016/04/25 ~ 2016/04/29	1.1223	1.1459	1.1223	1.1446	236p	陽線引け	-	-					1.1058	1.1140	1.1293	1.1376	1.1529	1.1612	1.1765											
2016/05/02 ~ 2016/05/06	1.1461	1.1615	1.1386	1.1401	229p	陽線引け	1.1615	1.1386	1.1508	1.1116	1.1508	1.1116	1.1091	1.1239	1.1320	1.1467	1.1548	1.1696	1.1777											
2016/05/09 ~ 2016/05/13	1.1397	1.1447	1.1283	1.1312	164p	陽線引け	1.1447	1.1283	1.1379	1.1216	1.1379	1.1216	1.1084	1.1184	1.1248	1.1347	1.1411	1.1511	1.1575	1.1397	Bear	1.1121	~ 1.1184	1.1246	~ 1.1265	1.1347	1.1429	~ 1.1448	1.1511	~ 1.1573
2016/05/16 ~ 2016/05/20	1.1304	1.1346	1.1180	1.1218	166p	陽線引け	1.1346	1.1180	1.1282	1.1116	1.1282	1.1116	1.0984	1.1082	1.1150	1.1248	1.1316	1.1414	1.1482	1.1354	Bear	1.1019	~ 1.1082	1.1145	~ 1.1165	1.1248	1.1331	~ 1.1351	1.1414	~ 1.1477

GBP/JPY											Demark				Pivot				Fibonacci Zone						
当日のOHLCLから計算される翌日の											TD Range Projection				TD pivot points										
日足	Open	High	Low	Close	値幅/日	引け形態	真の高値	真の安値	予想高値	予想安値	予想高値	予想安値	StopLoss	Support	Pivot	Resistance	StopLoss	3-days AVG	Support Zone 2	Support Zone 1	BP	Resistance Zone 1	Resistance Zone 2		
													LBOp	S2	S1	PP	R1	R2	HBOP						
2016/05/16	155.98	157.20	155.68	157.17	151p	陽線引け	-	-					154.66	155.17	156.17	156.68	157.69	158.20	159.20						
2016/05/17	157.17	158.98	157.02	157.82	197p	陽線引け	158.98	157.02	159.38	157.42	159.38	157.42	154.93	155.97	156.90	157.94	158.86	159.90	160.						

IMM扱い8通貨/ダウ/日経/金/オイル/主要クロス円の過去5日及び過去5週の4本値

AUDUSD 5					CADUSD 5					CHFUSD 5				
Date	Open	High	Low	Close	Date	Open	High	Low	Close	Date	Open	High	Low	Close
2016/05/20	0.7223	0.7249	0.7212	0.7224	2016/05/20	0.7634	0.7647	0.7598	0.7622	2016/05/20	1.0093	1.0105	1.0074	1.0092
2016/05/19	0.7224	0.7241	0.7177	0.7223	2016/05/19	0.7675	0.7686	0.7603	0.7634	2016/05/19	1.0125	1.0139	1.0078	1.0094
2016/05/18	0.7325	0.7326	0.7216	0.7224	2016/05/18	0.7748	0.7755	0.7671	0.7675	2016/05/18	1.0200	1.0205	1.0121	1.0125
2016/05/17	0.7291	0.7366	0.7283	0.7325	2016/05/17	0.7755	0.7789	0.7719	0.7748	2016/05/17	1.0229	1.0255	1.0195	1.0200
2016/05/16	0.7257	0.7309	0.7249	0.7291	2016/05/16	0.7724	0.7766	0.7714	0.7755	2016/05/16	1.0248	1.0259	1.0220	1.0229

CNYUSD 5					EURUSD 5					GBPUSD 5				
Date	Open	High	Low	Close	Date	Open	High	Low	Close	Date	Open	High	Low	Close
2016/05/20	0.1523	0.1526	0.1523	0.1523	2016/05/20	1.1198	1.1237	1.1197	1.1218	2016/05/20	1.4601	1.4613	1.4486	1.4490
2016/05/19	0.1520	0.1524	0.1520	0.1524	2016/05/19	1.1218	1.1230	1.1180	1.1199	2016/05/19	1.4597	1.4663	1.4562	1.4603
2016/05/18	0.1527	0.1528	0.1525	0.1525	2016/05/18	1.1312	1.1316	1.1214	1.1218	2016/05/18	1.4462	1.4635	1.4404	1.4598
2016/05/17	0.1527	0.1530	0.1527	0.1527	2016/05/17	1.1316	1.1346	1.1302	1.1313	2016/05/17	1.4411	1.4524	1.4404	1.4462
2016/05/16	0.1525	0.1528	0.1524	0.1527	2016/05/16	1.1304	1.1342	1.1303	1.1315	2016/05/16	1.4354	1.4415	1.4333	1.4411

JPYUSD 5					MXNUSD 5					NZDUSD 5				
Date	Open	High	Low	Close	Date	Open	High	Low	Close	Date	Open	High	Low	Close
2016/05/20	0.9095	0.9103	0.9043	0.9078	2016/05/20	0.0543	0.0546	0.0542	0.0545	2016/05/20	0.6738	0.6782	0.6737	0.6769
2016/05/19	0.9076	0.9116	0.9059	0.9094	2016/05/19	0.0542	0.0543	0.0538	0.0542	2016/05/19	0.6738	0.6765	0.6711	0.6739
2016/05/18	0.9164	0.9197	0.9070	0.9076	2016/05/18	0.0543	0.0546	0.0541	0.0542	2016/05/18	0.6810	0.6811	0.6727	0.6738
2016/05/17	0.9169	0.9187	0.9120	0.9164	2016/05/17	0.0546	0.0548	0.0544	0.0547	2016/05/17	0.6785	0.6843	0.6779	0.6810
2016/05/16	0.9202	0.9219	0.9166	0.9169	2016/05/16	0.0551	0.0553	0.0548	0.0549	2016/05/16	0.6766	0.6809	0.6747	0.6785

Nikkei 225 - Japonia (NIKKEI) 5					(ドル建て終値)		出来高	
Date	Open	High	Low	Close				
2016/05/20	16594.99	16770.87	16548.34	16736.35	151.78	1263469952	1887271100	
2016/05/19	16807.46	16841.04	16590.16	16646.66	151.22	1415542144	2018777400	
2016/05/18	16611.40	16795.47	16513.17	16644.69	152.10	1650558336	2341974300	
2016/05/17	16618.95	16655.89	16509.31	16652.80	152.22	1176465408	1784450100	
2016/05/16	16391.92	16632.62	16391.92	16466.40	151.39	1251209344	1952089300	
週4本値	16391.92	16841.04	16391.92	16736.35	151.78	(N225銘柄計)	(東証一部全体計)	

XAUUSD 5					
Date	Open	High	Low	Close	Volume
2016/05/20	1255.29	1260.23	1249.19	1252.70	0
2016/05/19	1258.62	1261.47	1244.42	1255.41	0
2016/05/18	1279.51	1281.82	1255.32	1258.75	0
2016/05/17	1273.58	1282.37	1269.49	1279.10	0
2016/05/16	1271.87	1288.87	1271.31	1274.28	0
週4本値	1271.87	1288.87	1244.42	1252.70	

Dow Jones Industrial - USA (DJIA) 5					出来高	
Date	Open	High	Low	Close		
2016/05/20	17437.32	17571.75	17437.32	17500.94	111997733	
2016/05/19	17514.16	17514.16	17331.07	17435.40	95531591	
2016/05/18	17501.28	17636.22	17418.21	17526.62	79115798	
2016/05/17	17701.46	17701.46	17469.92	17529.98	103255446	
2016/05/16	17531.76	17755.80	17531.76	17710.71	88438989	
週4本値	17531.76	17755.80	17331.07	17500.94	111997733	

Historical Data by **Stooq**
 Historical Data by **MarketNewsline**
 (ダウと日経)
 Arrangement by **FX_勝てば官軍?**

Crude Light Oil 5						
Date	Open	High	Low	Close	Volume	
2016/05/20	48.72	49.28	47.97	48.45	0	
2016/05/19	47.89	48.77	46.75	48.77	0	
2016/05/18	48.45	48.94	47.79	47.88	0	
2016/05/17	47.86	48.64	47.54	48.60	1034136	
2016/05/16	46.21	47.98	46.17	47.96	1155647	
週4本値	46.21	49.28	46.17	48.45		

USDJPY 5					EURJPY 5					GBPJPY 5				
日付	始値	高値	安値	終値	日付	始値	高値	安値	終値	日付	始値	高値	安値	終値
2016/05/20	109.96	110.59	109.85	110.16	2016/05/20	123.13	124.05	123.06	123.57	2016/05/20	160.55	161.06	159.53	159.61
2016/05/19	110.19	110.38	109.70	109.96	2016/05/19	123.60	123.78	122.95	123.14	2016/05/19	160.84	161.63	160.17	160.58
2016/05/18	109.13	110.26	108.73	110.19	2016/05/18	123.45	123.91	122.97	123.60	2016/05/18	157.82	160.90	157.04	160.85
2016/05/17	109.07	109.65	108.85	109.13	2016/05/17	123.41	124.18	123.25	123.45	2016/05/17	157.17	158.98	157.02	157.82
2016/05/16	108.67	109.09	108.47	109.06	2016/05/16	122.84	123.51	122.62	123.41	2016/05/16	155.98	157.20	155.68	157.17

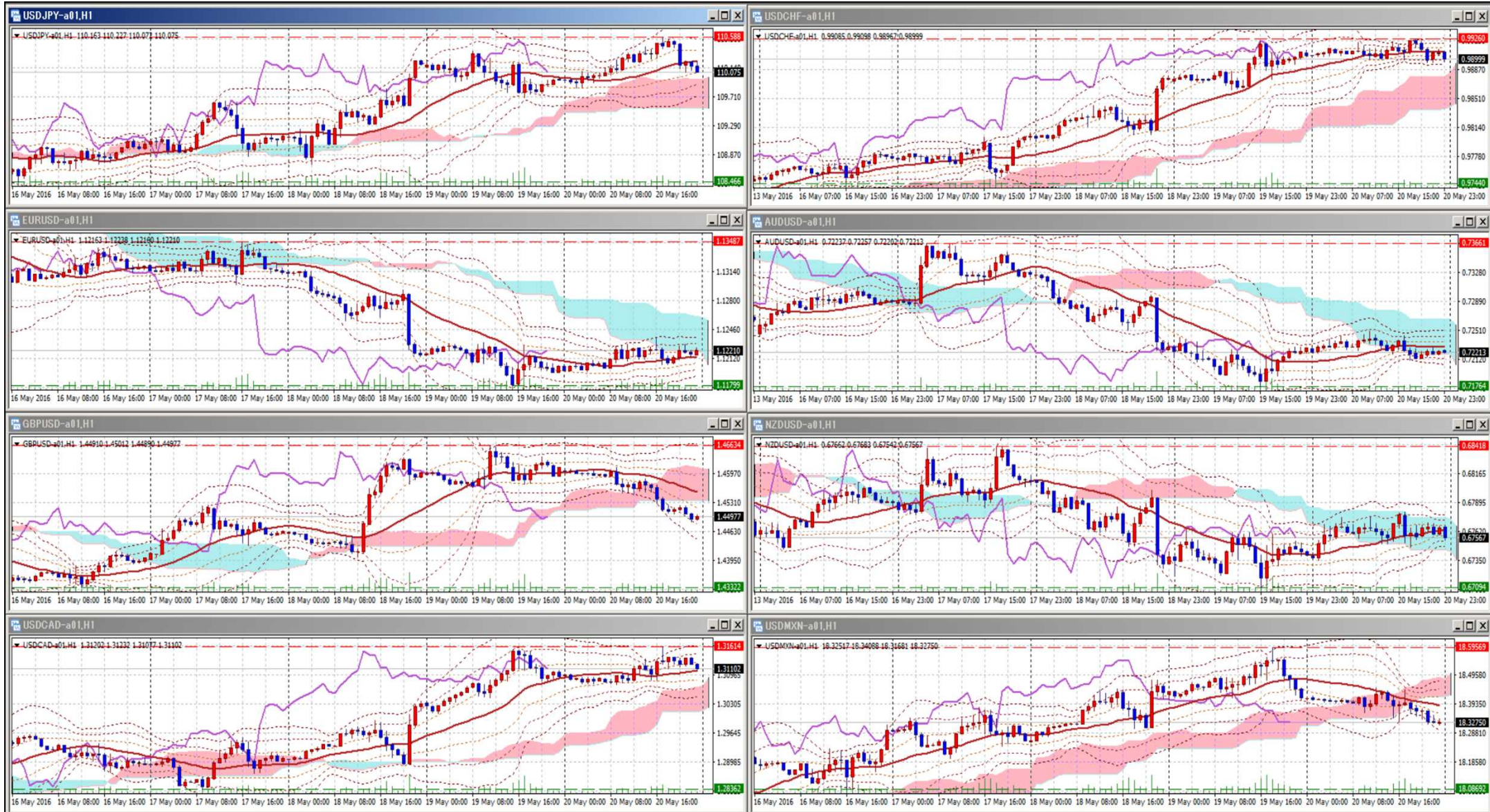
USDJPY Weekly 28					EURJPY Weekly 28					GBPJPY Weekly 28				
日付	始値	高値	安値	終値	日付	始値	高値	安値	終値	日付	始値	高値	安値	終値
2016/05/20	108.67	110.59	108.47	110.16	2016/05/20	122.84	124.18	122.62	123.57	2016/05/20	155.98	161.63	155.68	159.61
2016/05/13	107.21	109.53	107.17	108.65	2016/05/13	122.19	124.65	122.14	122.90	2016/05/13	154.61	158.47	154.44	156.10
2016/05/06	106.33	107.48	105.55	107.14	2016/05/06	121.87	123.52	121.50	122.16	2016/05/06	155.19	156.66	153.66	154.59
2016/04/29	111.79	111.88	106.28	106.48	2016/04/29	125.47	126.46	121.68	121.88	2016/04/29	161.63	162.82	155.32	155.56
2016/04/22	108.17	111.81	107.84	111.62	2016/04/22	122.19	125.51	121.72	123.30	2016/04/22	153.51	161.18	152.53	160.87

先週のIMM取り扱い対ドル8通貨チャート

※ 赤点線は週最高値/青点線は週最低値、BB中心線はSMA21

2016/05/16 ~ 2016/05/20

Chart by OANDA Japan MetaTrader4



Pivot Maker Ver 3.0 by FX_勝てば官軍?

<http://fx.najirane.com>