

JAPANESE YEN - CHICAGO MERCANTILE EXCHANGE

Code-097741

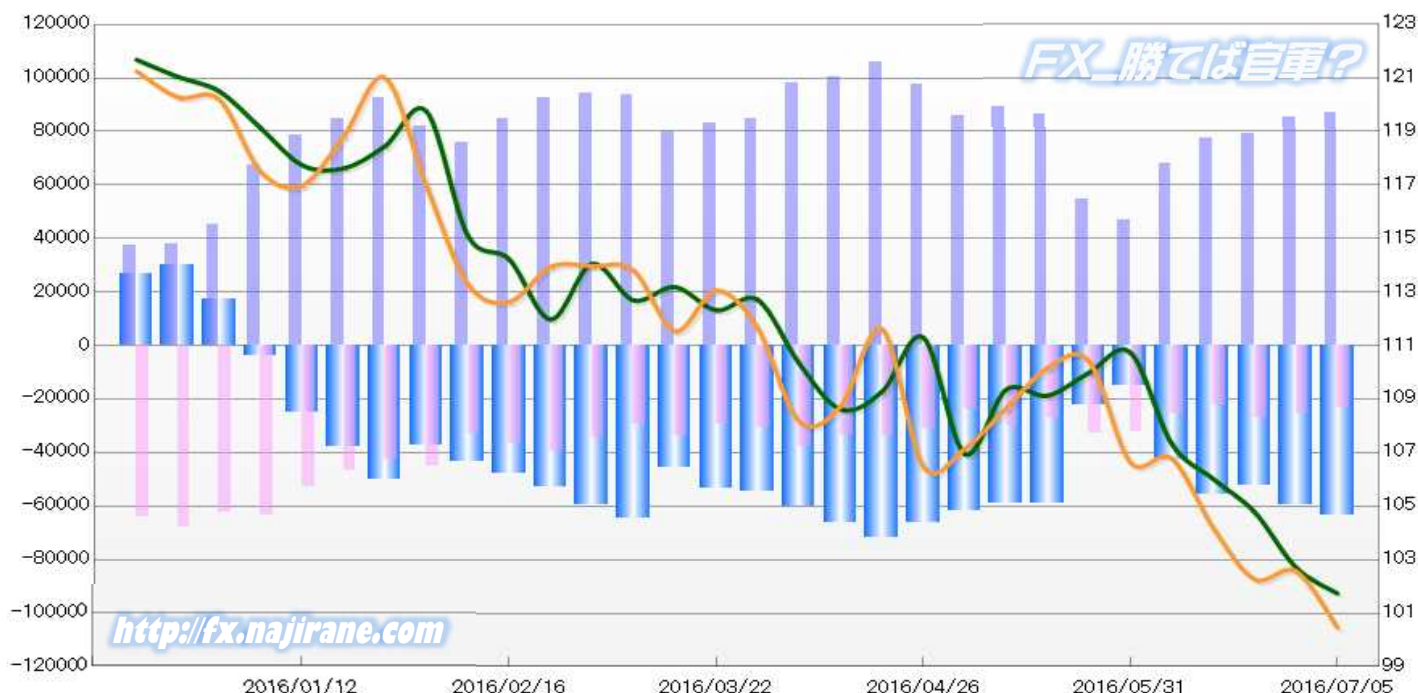
2016/01/12 ~ 2016/07/05

2016/07/08 NYクローズ時公表値

Report_Date	Non Commercial Positions												火曜日 引け値	金曜日 引け値
	Long	増減	増減(%)	Short	増減	増減(%)	売り越し	増減	増減(%)	売買計	増減	増減(%)		
2016/07/05	87037	1544	1.8%	23469	-2274	-8.8%	-63568	3818	6.4%	110506	-730	-0.7%	101.74	100.47
2016/06/28	85493	6095	7.7%	25743	-1359	-5.0%	-59750	7454	14.3%	111236	4736	4.4%	102.71	102.57
2016/06/21	79398	1695	2.2%	27102	5089	23.1%	-52296	-3394	-6.1%	106500	6784	6.8%	104.78	102.27
2016/06/14	77703	9466	13.9%	22013	-3371	-13.3%	-55690	12837	30.0%	99716	6095	6.5%	106.02	104.19
2016/06/07	68237	21273	45.3%	25384	-6743	-21.0%	-42853	28016	188.8%	93621	14530	18.4%	107.33	106.78
2016/05/31	46964	-7828	-14.3%	32127	-606	-1.9%	-14837	-7222	-32.7%	79091	-8434	-9.6%	110.74	106.64
2016/05/24	54792	-31373	-36.4%	32733	5487	20.1%	-22059	-36860	-62.6%	87525	-25886	-22.8%	109.98	110.42
2016/05/17	86165	-2732	-3.1%	27246	-2604	-8.7%	-58919	-128	-0.2%	113411	-5336	-4.5%	109.13	110.16
2016/05/10	88897	3270	3.8%	29850	5744	23.8%	-59047	-2474	-4.0%	118747	9014	8.2%	109.35	108.65
2016/05/03	85627	-11843	-12.2%	24106	-6866	-22.2%	-61521	-4977	-7.5%	109733	-18709	-14.6%	106.95	107.14
2016/04/26	97470	-8240	-7.8%	30972	-2868	-8.5%	-66498	-5372	-7.5%	128442	-11108	-8.0%	111.30	106.48
2016/04/19	105710	5590	5.6%	33840	-90	-0.3%	-71870	5680	8.6%	139550	5500	4.1%	109.27	111.62
2016/04/12	100120	1990	2.0%	33930	-4127	-10.8%	-66190	6117	10.2%	134050	-2137	-1.6%	108.62	108.73
2016/04/05	98130	13260	15.6%	38057	7574	24.8%	-60073	5686	10.5%	136187	20834	18.1%	110.34	108.17
2016/03/29	84870	2058	2.5%	30483	1017	3.5%	-54387	1041	2.0%	115353	3075	2.7%	112.71	111.65
2016/03/22	82812	3386	4.3%	29466	-4471	-13.2%	-53346	7857	17.3%	112278	-1085	-1.0%	112.32	113.06
2016/03/15	79426	-14441	-15.4%	33937	4403	14.9%	-45489	-18844	-29.3%	113363	-10038	-8.1%	113.19	111.54
2016/03/08	93867	-203	-0.2%	29534	-4911	-14.3%	-64333	4708	7.9%	123401	-5114	-4.0%	112.69	113.81
2016/03/01	94070	1694	1.8%	34445	-5197	-13.1%	-59625	6891	13.1%	128515	-3503	-2.7%	114.05	113.96
2016/02/23	92376	7858	9.3%	39642	3025	8.3%	-52734	4833	10.1%	132018	10883	9.0%	111.98	113.94
2016/02/16	84518	8707	11.5%	36617	4038	12.4%	-47901	4669	10.8%	121135	12745	11.8%	114.22	112.63
2016/02/09	75811	-6297	-7.7%	32579	-12284	-27.4%	-43232	5987	16.1%	108390	-18581	-14.6%	115.11	113.30
2016/02/02	82108	-10520	-11.4%	44863	2261	5.3%	-37245	-12781	-25.5%	126971	-8259	-6.1%	119.75	116.97
2016/01/26	92628	8143	9.6%	42602	-4230	-9.0%	-50026	12373	32.9%	135230	3913	3.0%	118.45	121.00
2016/01/19	84485	6100	7.8%	46832	-6287	-11.8%	-37653	12387	49.0%	131317	-187	-0.1%	117.62	118.81
2016/01/12	78385			53119			-25266			131504			117.74	116.98

JAPANESE YEN - CHICAGO MERCANTILE EXCHANGE
FUTURES ONLY POSITIONS

— 金曜終値 — 火曜終値 — Short枚数 — Long枚数 ■ 売り越し枚数(マイナスの場合は買越しと読替え)



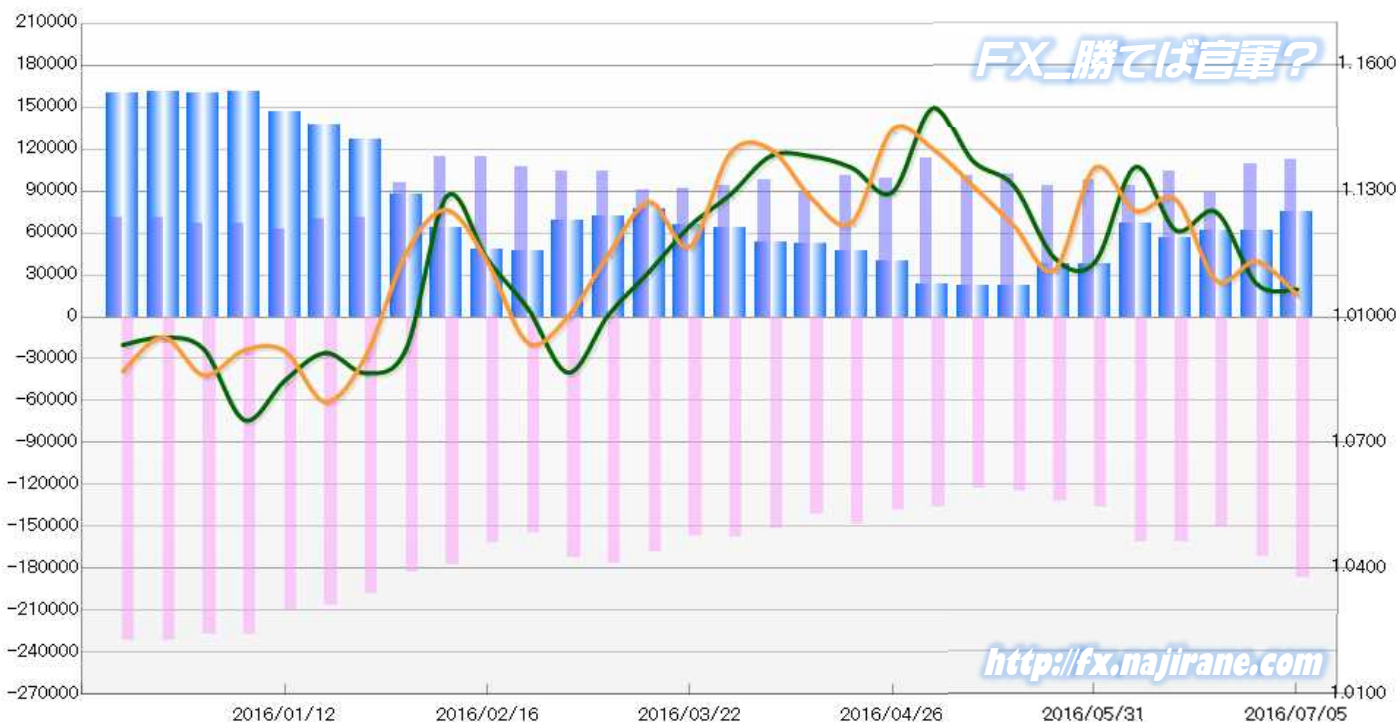
EURO FX - CHICAGO MERCANTILE EXCHANGE
2016/01/12 ~ 2016/07/05

Code-099741
2016/07/08 NYクローズ時公表値

Report_Date	Non Commercial Positions												火曜日 引け値	金曜日 引け値
	Long	増減		Short	増減		売り越し	増減		売買計	増減			
2016/07/05	112011	2431	2.2%	187338	15824	9.2%	75327	13393	21.6%	299349	18255	6.5%	1.1066	1.1052
2016/06/28	109580	20941	23.6%	171514	21529	14.4%	61934	588	1.0%	281094	42470	17.8%	1.1078	1.1132
2016/06/21	88639	-15871	-15.2%	149985	-11014	-6.8%	61346	4857	8.6%	238624	-26885	-10.1%	1.1250	1.1087
2016/06/14	104510	11018	11.8%	160999	395	0.2%	56489	-10623	-15.8%	265509	11413	4.5%	1.1207	1.1280
2016/06/07	93492	-4726	-4.8%	160604	24732	18.2%	67112	29458	78.2%	254096	20006	8.5%	1.1357	1.1253
2016/05/31	98218	4263	4.5%	135872	4022	3.1%	37654	-241	-0.6%	234090	8285	3.7%	1.1130	1.1356
2016/05/24	93955	-7768	-7.6%	131850	7540	6.1%	37895	15308	67.8%	225805	-228	-0.1%	1.1141	1.1111
2016/05/17	101723	446	0.4%	124310	1161	0.9%	22587	715	3.3%	226033	1607	0.7%	1.1313	1.1218
2016/05/10	101277	-11757	-10.4%	123149	-13504	-9.9%	21872	-1747	-7.4%	224426	-25261	-10.1%	1.1371	1.1312
2016/05/03	113034	13962	14.1%	136653	-2086	-1.5%	23619	-16048	-40.5%	249687	11876	5.0%	1.1497	1.1401
2016/04/26	99072	-2139	-2.1%	138739	-9389	-6.3%	39667	-7250	-15.5%	237811	-11528	-4.6%	1.1297	1.1446
2016/04/19	101211	11995	13.4%	148128	6861	4.9%	46917	-5134	-9.9%	249339	18856	8.2%	1.1356	1.1225
2016/04/12	89216	-8798	-9.0%	141267	-10234	-6.8%	52051	-1436	-2.7%	230483	-19032	-7.6%	1.1383	1.1284
2016/04/05	98014	4288	4.6%	151501	-6036	-3.8%	53487	-10324	-16.2%	249515	-1748	-0.7%	1.1384	1.1400
2016/03/29	93726	2392	2.6%	157537	150	0.1%	63811	-2242	-3.4%	251263	2542	1.0%	1.1292	1.1391
2016/03/22	91334	981	1.1%	157387	-10521	-6.3%	66053	-11502	-14.8%	248721	-9540	-3.7%	1.1217	1.1168
2016/03/15	90353	-13812	-13.3%	167908	-8164	-4.6%	77555	5648	7.9%	258261	-21976	-7.8%	1.1108	1.1274
2016/03/08	104165	200	0.2%	176072	3566	2.1%	71907	3366	4.9%	280237	3766	1.4%	1.1006	1.1150
2016/03/01	103965	-3601	-3.3%	172506	18083	11.7%	68541	21684	46.3%	276471	14482	5.5%	1.0867	1.1002
2016/02/23	107566	-6404	-5.6%	154423	-7752	-4.8%	46857	-1348	-2.8%	261989	-14156	-5.1%	1.1020	1.0938
2016/02/16	113970	-637	-0.6%	162175	-15746	-8.8%	48205	-15109	-23.9%	276145	-16383	-5.6%	1.1137	1.1132
2016/02/09	114607	18595	19.4%	177921	-5164	-2.8%	63314	-23759	-27.3%	292528	13431	4.8%	1.1288	1.1255
2016/02/02	96012	24566	34.4%	183085	-15576	-7.8%	87073	-40142	-31.6%	279097	8990	3.3%	1.0925	1.1153
2016/01/26	71446	1997	2.9%	198661	-7803	-3.8%	127215	-9800	-7.2%	270107	-5806	-2.1%	1.0866	1.0907
2016/01/19	69449	6287	10.0%	206464	-3149	-1.5%	137015	-9436	-6.4%	275913	3138	1.2%	1.0914	1.0798
2016/01/12	63162			209613			146451			272775			1.0848	1.0919

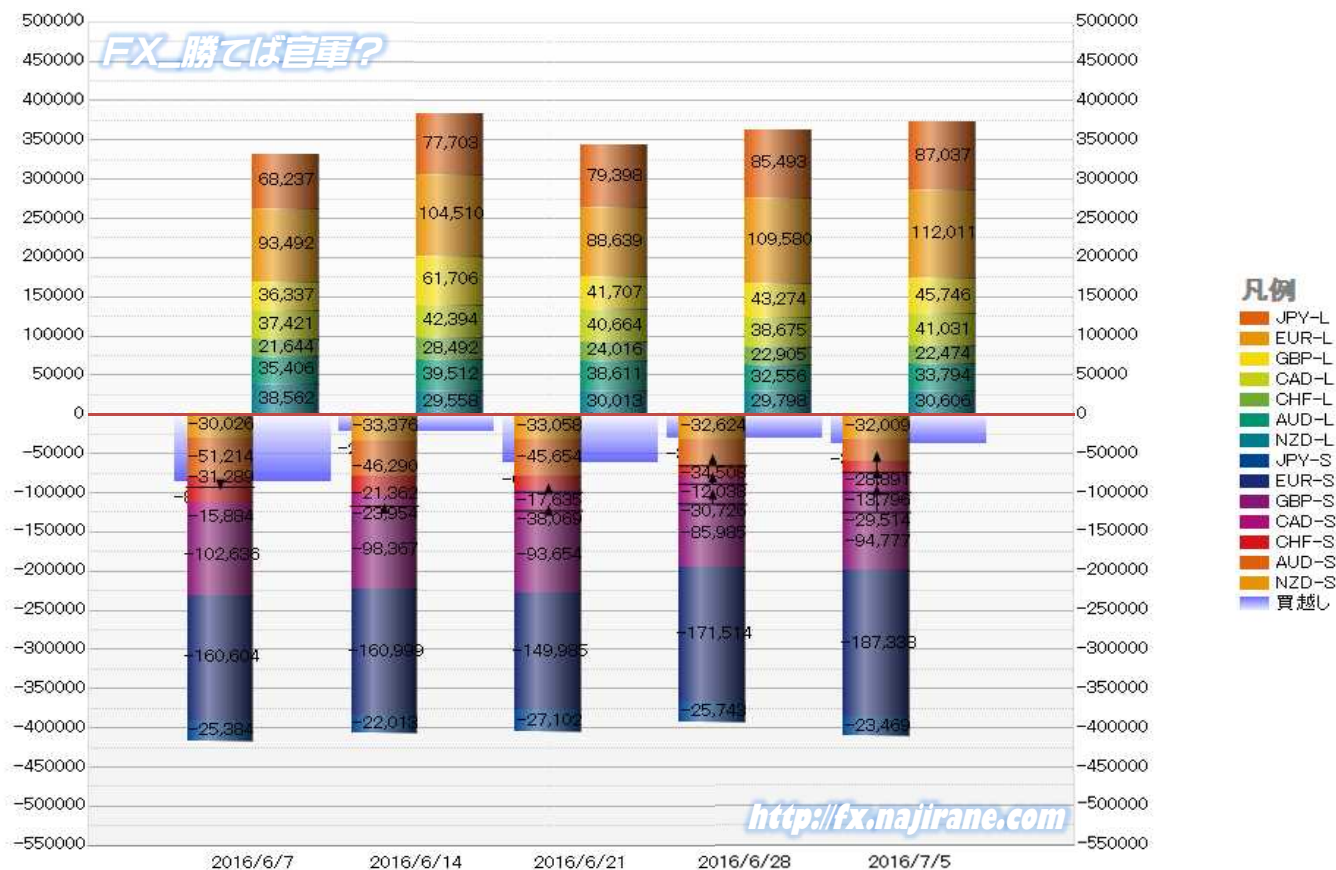
EURO FX - CHICAGO MERCANTILE EXCHANGE
FUTURES ONLY POSITIONS

— 金曜締め週終値 — 火曜締め週終値 — Short枚数 — Long枚数 — 売り越し枚数(マイナスの場合は買越しと読替え)



	2016/06/07			2016/06/14			2016/06/21			2016/06/28			2016/07/05		
	Long	Short	売り越し	Long	Short	売り越し	Long	Short	売り越し	Long	Short	売り越し	Long	Short	売り越し
JPY	68237	25384	-42853	77703	22013	-55690	79398	27102	-52296	85493	25743	-59750	87037	23469	-63568
	前週比 枚数増減 (枚)			9466	-3371	12837	1695	5089	-3394	6095	-1359	7454	1544	-2274	3818
	前週比 枚数増減 (%)			13.87%	-13.28%	29.96%	2.18%	23.12%	-6.09%	7.68%	-5.01%	14.25%	1.81%	-8.83%	6.39%
EUR	93492	160604	67112	104510	160999	56489	88639	149985	61346	109580	171514	61934	112011	187338	75327
	前週比 枚数増減 (枚)			11018	395	-10623	-15871	-11014	4857	20941	21529	588	2431	15824	13393
	前週比 枚数増減 (%)			11.78%	0.25%	-15.83%	-15.19%	-6.84%	8.60%	23.63%	14.35%	0.96%	2.22%	9.23%	21.62%
GBP	36337	102636	66299	61706	98367	36661	41707	93654	51947	43274	85985	42711	45746	94777	49031
	前週比 枚数増減 (枚)			25369	-4269	-29638	-19999	-4713	15286	1567	-7669	-9236	2472	8792	6320
	前週比 枚数増減 (%)			69.82%	-4.16%	-44.70%	-32.41%	-4.79%	41.70%	3.76%	-8.19%	-17.78%	5.71%	10.23%	14.80%
AUD	35406	51214	15808	39512	46290	6778	38611	45654	7043	32556	34508	1952	33794	28891	-4903
	前週比 枚数増減 (枚)			4106	-4924	-9030	-901	-636	265	-6055	-11146	-5091	1238	-5617	2951
	前週比 枚数増減 (%)			11.60%	-9.61%	-57.12%	-2.28%	-1.37%	3.91%	-15.68%	-24.41%	-72.28%	3.80%	-16.28%	-351.18%
CAD	37421	15884	-21537	42394	23954	-18440	40664	38069	-2595	38675	30726	-7949	41031	29514	-11517
	前週比 枚数増減 (枚)			4973	8070	-3097	-1730	14115	-15845	-1989	-7343	5354	2356	-1212	3568
	前週比 枚数増減 (%)			13.29%	50.81%	-14.38%	-4.08%	58.93%	-85.93%	-4.89%	-19.29%	206.32%	6.09%	-3.94%	44.89%
CHF	21644	31289	9645	28492	21362	-7130	24016	17635	-6381	22905	12038	-10867	22474	13796	-8678
	前週比 枚数増減 (枚)			6848	-9927	-2515	-4476	-3727	-749	-1111	-5597	4486	-431	1758	-2189
	前週比 枚数増減 (%)			31.64%	-31.73%	-173.92%	-15.71%	-17.45%	-10.50%	-4.63%	-31.74%	70.30%	-1.88%	14.60%	-20.14%
NZD	38562	30026	-8536	29558	33376	3818	30013	33058	3045	29798	32624	2826	30606	32009	1403
	前週比 枚数増減 (枚)			-9004	3350	-4718	455	-318	-773	-215	-434	-219	808	-615	-1423
	前週比 枚数増減 (%)			-23.35%	11.16%	-144.73%	1.54%	-0.95%	-20.25%	-0.72%	-1.31%	-7.19%	2.71%	-1.89%	-50.35%
MXN	22389	81698	59309	16894	82513	65619	13509	82389	68880	13390	78717	65327	24238	69095	44857
	前週比 枚数増減 (枚)			-5495	815	6310	-3385	-124	3261	-119	-3672	-3553	10848	-9622	-20470
	前週比 枚数増減 (%)			-24.54%	1.00%	10.64%	-20.04%	-0.15%	4.97%	-0.88%	-4.46%	-5.16%	81.02%	-12.22%	-31.33%
Total All 8	353488	498735	145247	400769	488874	88105	356557	487546	130989	375671	471855	96184	396937	478889	81952
	前週比 枚数増減 (枚)			47281	-9861	-57142	-44212	-1328	42884	19114	-15691	-34805	21266	7034	-14232
	前週比 枚数増減 (%)			13.38%	-1.98%	-39.34%	-11.03%	-0.27%	48.67%	5.36%	-3.22%	-26.57%	5.66%	1.49%	-14.80%
Total 7 (MXN除)	331099	417037	85938	383875	406361	22486	343048	405157	62109	362281	393138	30857	372699	409794	37095
	前週比 枚数増減 (枚)			52776	-10676	-63452	-40827	-1204	39623	19233	-12019	-31252	10418	16656	6238
	前週比 枚数増減 (%)			15.9%	-2.6%	-73.8%	-10.6%	-0.3%	176.2%	5.6%	-3.0%	-50.3%	2.9%	4.2%	20.2%

直近5週 CFTC IMM主要7通貨の構成

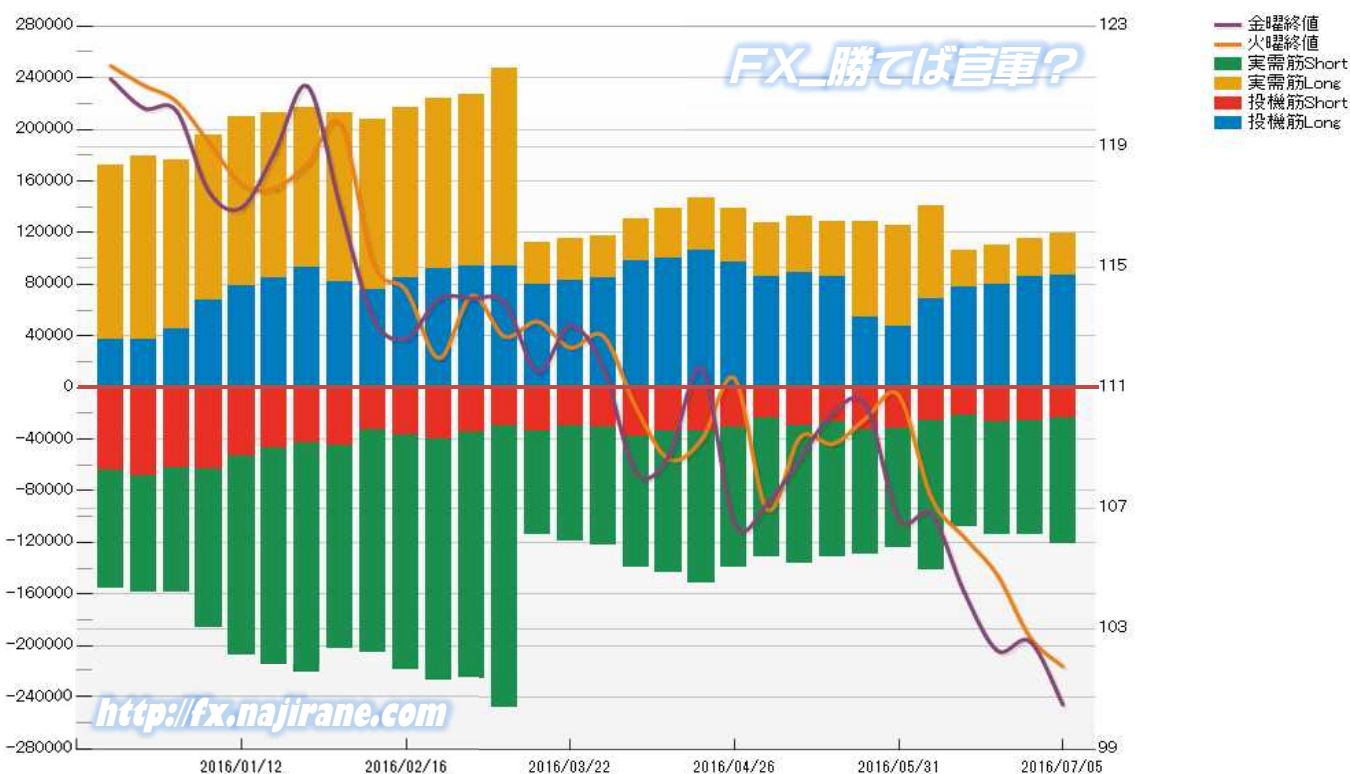


JAPANESE YEN - CHICAGO MERCANTILE EXCHANGE
FUTURES ONLY POSITIONS

Code-097741
2016/07/08 公表値

Date	投機筋集計				実需筋集計				投機筋+実需筋合計				ドル円終値	
	円買い	円売り	売り越し	売買計	円買い	円売り	売り越し	売買計	円買い	円売り	売り越し	売買計	火曜締め	金曜締め
2016/07/05	87037	23469	-63568	110506	32637	97652	65015	130289	119674	121121	1447	240795	101.74	100.47
2016/06/28	85493	25743	-59750	111236	30249	88316	58067	118565	115742	114059	-1683	229801	102.71	102.57
2016/06/21	79398	27102	-52296	106500	30450	86992	56542	117442	109848	114094	4246	223942	104.78	102.27
2016/06/14	77703	22013	-55690	99716	28678	86062	57384	114740	106381	108075	1694	214456	106.02	104.19
2016/06/07	68237	25384	-42853	93621	72616	116477	43861	189093	140853	141861	1008	282714	107.33	106.78
2016/05/31	46964	32127	-14837	79091	78749	92275	13526	171024	125713	124402	-1311	250115	110.74	106.64
2016/05/24	54792	32733	-22059	87525	73603	96638	23035	170241	128395	129371	976	257766	109.98	110.42
2016/05/17	86165	27246	-58919	113411	41969	104408	62439	146377	128134	131654	3520	259788	109.13	110.16
2016/05/10	88897	29850	-59047	118747	43309	106603	63294	149912	132206	136453	4247	268659	109.35	108.65
2016/05/03	85627	24106	-61521	109733	41904	107399	65495	149303	127531	131505	3974	259036	106.95	107.14
2016/04/26	97470	30972	-66498	128442	40734	108419	67685	149153	138204	139391	1187	277595	111.30	106.48
2016/04/19	105710	33840	-71870	139550	41258	118087	76829	159345	146968	151927	4959	298895	109.27	111.62
2016/04/12	100120	33930	-66190	134050	38652	109410	70758	148062	138772	143340	4568	282112	108.62	108.73
2016/04/05	98130	38057	-60073	136187	32451	101508	69057	133959	130581	139565	8984	270146	110.34	108.17
2016/03/29	84870	30483	-54387	115353	32118	92081	59963	124199	116988	122564	5576	239552	112.71	111.65
2016/03/22	82812	29466	-53346	112278	32265	89776	57511	122041	115077	119242	4165	234319	112.32	113.06
2016/03/15	79426	33937	-45489	113363	32762	79738	46976	112500	112188	113675	1487	225863	113.19	111.54
2016/03/08	93867	29534	-64333	123401	153269	218579	65310	371848	247136	248113	977	495249	112.69	113.81
2016/03/01	94070	34445	-59625	128515	132993	191615	58622	324608	227063	226060	-1003	453123	114.05	113.96
2016/02/23	92376	39642	-52734	132018	131150	188392	57242	319542	223526	228034	4508	451560	111.98	113.94
2016/02/16	84518	36617	-47901	121135	131826	183285	51459	315111	216344	219902	3558	436246	114.22	112.63
2016/02/09	75811	32579	-43232	108390	131862	172663	40801	304525	207673	205242	-2431	412915	115.11	113.30
2016/02/02	82108	44863	-37245	126971	130736	157826	27090	288562	212844	202689	-10155	415533	119.75	116.97
2016/01/26	92628	42602	-50026	135230	124038	178679	54641	302717	216666	221281	4615	437947	118.45	121.00
2016/01/19	84485	46832	-37653	131317	128081	168498	40417	296579	212566	215330	2764	427896	117.62	118.81
2016/01/12	78385	53119	-25266	131504	130859	154704	23845	285563	209244	207823	-1421	417067	117.74	116.98
2016/01/05	67471	63368	-4103	130839	127747	123204	-4543	250951	195218	186572	-8646	381790	119.12	117.49
2015/12/29	45008	62234	17226	107242	131111	96331	-34780	227442	176119	158565	-17554	334684	120.50	120.19
2015/12/22	37677	68044	30367	105721	141911	90973	-50938	232884	179588	159017	-20571	338605	121.04	120.28
2015/12/15	37301	63881	26580	101182	134622	92036	-42586	226658	171923	155917	-16006	327840	121.68	121.25

JAPANESE YEN - CHICAGO MERCANTILE EXCHANGE
FUTURES ONLY POSITIONS Code-097741

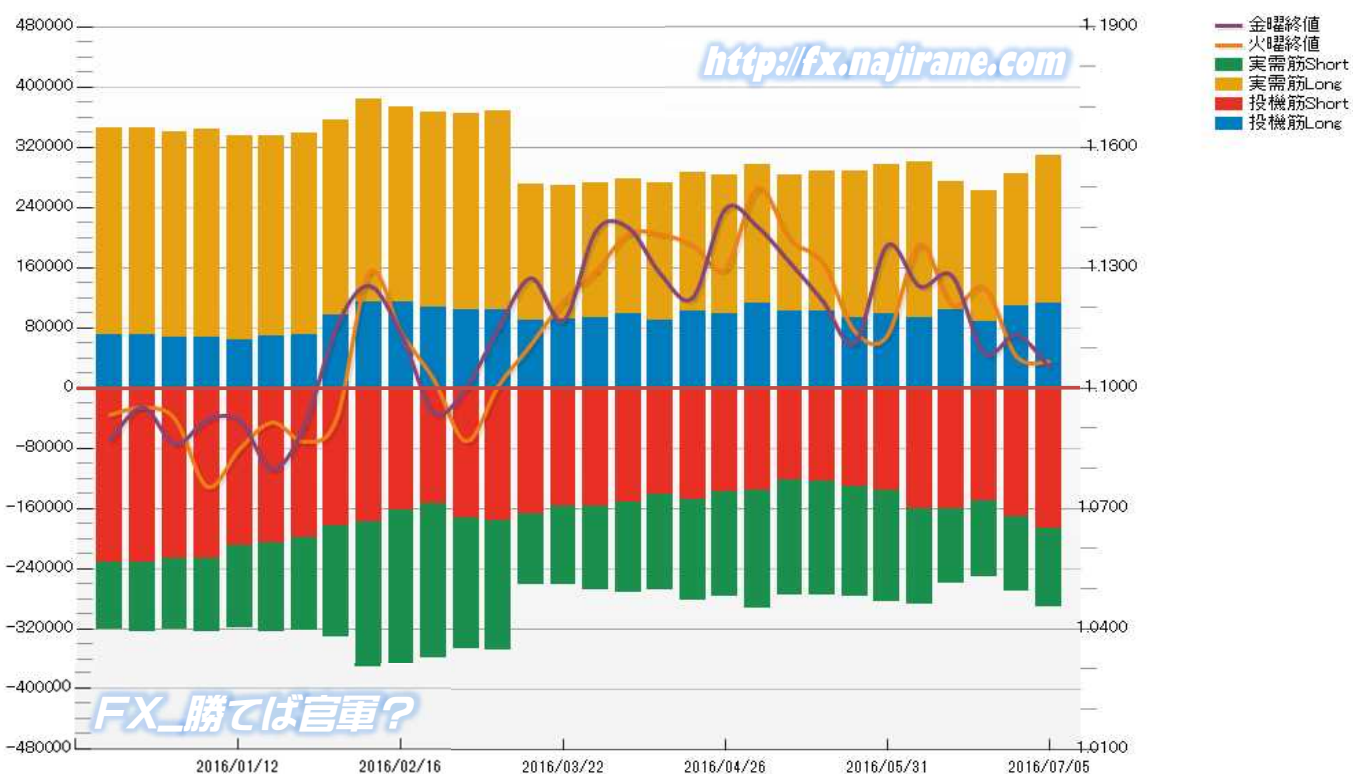


**EURO FX - CHICAGO MERCANTILE EXCHANGE
FUTURES ONLY POSITIONS**

**Code-099741
2016/07/08 公表値**

Date	投機筋集計				実需筋集計				投機筋+実需筋合計				ユーロドル終値	
	EUR買い	EUR売り	売り越し	売買計	EUR買い	EUR売り	売り越し	売買計	EUR買い	EUR売り	売り越し	売買計	火曜締め	金曜締め
2016/07/05	112011	187338	75327	299349	197845	104095	-93750	301940	309856	291433	-18423	601289	1.1066	1.1052
2016/06/28	109580	171514	61934	281094	175747	99094	-76653	274841	285327	270608	-14719	555935	1.1078	1.1132
2016/06/21	88639	149985	61346	238624	174231	100833	-73398	275064	262870	250818	-12052	513688	1.1250	1.1087
2016/06/14	104510	160999	56489	265509	168953	98248	-70705	267201	273463	259247	-14216	532710	1.1207	1.1280
2016/06/07	93492	160604	67112	254096	207448	127910	-79538	335358	300940	288514	-12426	589454	1.1357	1.1253
2016/05/31	98218	135872	37654	234090	198726	148012	-50714	346738	296944	283884	-13060	580828	1.1130	1.1356
2016/05/24	93955	131850	37895	225805	193758	145257	-48501	339015	287713	277107	-10606	564820	1.1141	1.1111
2016/05/17	101723	124310	22587	226033	186065	151949	-34116	338014	287788	276259	-11529	564047	1.1313	1.1218
2016/05/10	101277	123149	21872	224426	181863	152379	-29484	334242	283140	275528	-7612	558668	1.1371	1.1312
2016/05/03	113034	136653	23619	249687	184524	156966	-27558	341490	297558	293619	-3939	591177	1.1497	1.1401
2016/04/26	99072	138739	39667	237811	182996	138270	-44726	321266	282068	277009	-5059	559077	1.1297	1.1446
2016/04/19	101211	148128	46917	249339	185459	133519	-51940	318978	286670	281647	-5023	568317	1.1356	1.1225
2016/04/12	89216	141267	52051	230483	182596	126793	-55803	309389	271812	268060	-3752	539872	1.1383	1.1284
2016/04/05	98014	151501	53487	249515	180268	120531	-59737	300799	278282	272032	-6250	550314	1.1384	1.1400
2016/03/29	93726	157537	63811	251263	178491	111140	-67351	289631	272217	268677	-3540	540894	1.1292	1.1391
2016/03/22	91334	157387	66053	248721	176950	103926	-73024	280876	268284	261313	-6971	529597	1.1217	1.1168
2016/03/15	90353	167908	77555	258261	180672	92859	-87813	273531	271025	260767	-10258	531792	1.1108	1.1274
2016/03/08	104165	176072	71907	280237	263377	173378	-89999	436755	367542	349450	-18092	716992	1.1006	1.1150
2016/03/01	103965	172506	68541	276471	260901	174403	-86498	435304	364866	346909	-17957	711775	1.0867	1.1002
2016/02/23	107566	154423	46857	261989	258954	205427	-53527	464381	366520	359850	-6670	726370	1.1020	1.0938
2016/02/16	113970	162175	48205	276145	258996	205232	-53764	464228	372966	367407	-5559	740373	1.1137	1.1132
2016/02/09	114607	177921	63314	292528	268586	194562	-74024	463148	383193	372483	-10710	755676	1.1288	1.1255
2016/02/02	96012	183085	87073	279097	259869	147872	-111997	407741	355881	330957	-24924	686838	1.0925	1.1153
2016/01/26	71446	198661	127215	270107	267012	124194	-142818	391206	338458	322855	-15603	661313	1.0866	1.0907
2016/01/19	69449	206464	137015	275913	265334	117867	-147467	383201	334783	324331	-10452	659114	1.0914	1.0798
2016/01/12	63162	209613	146451	272775	271543	109792	-161751	381335	334705	319405	-15300	654110	1.0848	1.0919
2016/01/05	66857	227500	160643	294357	276815	97443	-179372	374258	343672	324943	-18729	668615	1.0754	1.0921
2015/12/29	66973	227523	160550	294496	273701	93279	-180422	366980	340674	320802	-19872	661476	1.0923	1.0861
2015/12/22	70509	231556	161047	302065	275354	93283	-182071	368637	345863	324839	-21024	670702	1.0951	1.0952
2015/12/15	71295	231256	159961	302551	275052	89741	-185311	364793	346347	320997	-25350	667344	1.0933	1.0870

**EURO FX - CHICAGO MERCANTILE EXCHANGE
FUTURES ONLY POSITIONS Code-099741**



FX_勝てば官軍?

CME Daily Volume

シカゴ・マーカントイル取引所 取扱高日次データ

FX_勝てば官軍?

<http://fx.najirane.com>

EU Euro		取扱高			当日含む前5営業日計			参考レート	
Date	CALL	PUT	FUTURE	CALL	PUT	FUTURE	Open	Close	
2016/7/7 (木)	11850	17010	106520	51803	72763	784371	1.1095	1.1063	
2016/7/6 (水)	9105	16624	143951	51472	68662	833735	1.1067	1.1095	
2016/7/5 (火)	11082	12522	183109	55838	69643	839886	1.1149	1.1066	
2016/7/1 (金)	9172	10760	130421	65152	77594	875648	1.1103	1.1132	
2016/6/30 (木)	10594	15847	220370	72384	92109	1133536	1.1127	1.1103	
2016/6/29 (水)	11519	12909	155884	69706	92341	1072977	1.1078	1.1127	
2016/6/28 (火)	13471	17605	150102	63776	89985	1045156	1.1022	1.1078	
2016/6/27 (月)	20396	20473	218871	56750	79793	1041103	1.1038	1.1021	
2016/6/24 (金)	16404	25275	388309	44059	80834	964594	1.1418	1.1087	
2016/6/23 (木)	7916	16079	159811	39450	75562	724543	1.1333	1.1418	

AUS Dollar		取扱高			当日含む前5営業日計			参考レート	
Date	CALL	PUT	FUTURE	CALL	PUT	FUTURE	Open	Close	
2016/7/7 (木)	1508	3485	98138	10213	16038	529290	0.7516	0.7481	
2016/7/6 (水)	911	1160	112806	10308	14735	526812	0.7460	0.7516	
2016/7/5 (火)	3645	4201	127260	10890	15160	504314	0.7533	0.7460	
2016/7/1 (金)	1564	3744	67973	9589	14353	494488	0.7443	0.7493	
2016/6/30 (木)	2585	3448	123113	10156	14154	639342	0.7444	0.7443	
2016/6/29 (水)	1603	2182	95660	8596	17208	608019	0.7389	0.7444	
2016/6/28 (火)	1493	1585	90308	7479	15341	586590	0.7340	0.7389	
2016/6/27 (月)	2344	3394	117434	6746	14811	585936	0.7425	0.7339	
2016/6/24 (金)	2131	3545	212827	5991	13055	548585	0.7625	0.7465	
2016/6/23 (木)	1025	6502	91790	5988	12562	413000	0.7520	0.7625	

CHE Franc		取扱高			当日含む前5営業日計			参考レート	
Date	CALL	PUT	FUTURE	CALL	PUT	FUTURE	Open	Close	
2016/7/7 (木)	338	117	11189	907	474	83547	1.0253	1.0214	
2016/7/6 (水)	71	1	15877	742	472	86449	1.0232	1.0252	
2016/7/5 (火)	142	176	19685	816	831	85579	1.0295	1.0232	
2016/7/1 (金)	171	85	13091	737	695	91033	1.0242	1.0268	
2016/6/30 (木)	185	95	23705	646	704	114703	1.0210	1.0242	
2016/6/29 (水)	173	115	14091	813	614	115005	1.0202	1.0210	
2016/6/28 (火)	145	360	15007	653	562	122465	1.0227	1.0202	
2016/6/27 (月)	63	40	25139	672	319	131446	1.0277	1.0230	
2016/6/24 (金)	80	94	36761	615	300	126334	1.0381	1.0267	
2016/6/23 (木)	352	5	24007	605	378	111876	1.0429	1.0381	

JPN Yen		取扱高			当日含む前5営業日計			参考レート	
Date	CALL	PUT	FUTURE	CALL	PUT	FUTURE	Open	Close	
2016/7/7 (木)	7169	5247	88230	26195	22828	530331	101.39	100.77	
2016/7/6 (水)	6534	5986	136569	22996	22779	529916	101.73	101.39	
2016/7/5 (火)	7405	3726	110986	20026	22726	497250	102.54	101.74	
2016/7/1 (金)	2903	2476	81227	19836	24069	532186	103.29	102.57	
2016/6/30 (木)	2184	5393	113319	21572	27462	742591	102.90	103.30	
2016/6/29 (水)	3970	5198	87815	21636	32780	762220	102.71	102.90	
2016/6/28 (火)	3564	5933	103903	22849	30864	749845	101.91	102.71	
2016/6/27 (月)	7215	5069	145922	26350	36778	766733	101.85	101.91	
2016/6/24 (金)	4639	5869	291632	29553	38220	734185	106.58	102.27	
2016/6/23 (木)	2248	10711	132948	27660	34824	572431	104.81	106.59	

CAN Dollar		取扱高			当日含む前5営業日計			参考レート	
Date	CALL	PUT	FUTURE	CALL	PUT	FUTURE	Open	Close	
2016/7/7 (木)	1699	2762	63135	8320	11078	308578	0.7712	0.7691	
2016/7/6 (水)	1647	2340	63310	7251	9501	296650	0.7701	0.7713	
2016/7/5 (火)	1563	2520	71552	6566	8387	287596	0.7782	0.7700	
2016/7/1 (金)	1915	1238	40118	7306	9886	278233	0.7723	0.7746	
2016/6/30 (木)	1496	2218	70463	7773	10901	336799	0.7725	0.7722	
2016/6/29 (水)	630	1185	51207	7029	9337	330258	0.7676	0.7726	
2016/6/28 (火)	962	1226	54256	7276	9334	334138	0.7644	0.7677	
2016/6/27 (月)	2303	4019	62189	6967	9064	323785	0.7672	0.7644	
2016/6/24 (金)	2382	2253	98684	6073	5934	312577	0.7849	0.7693	
2016/6/23 (木)	752	654	63922	6132	4846	270141	0.7803	0.7849	

NZL Dollar		取扱高			当日含む前5営業日計			参考レート	
Date	CALL	PUT	FUTURE	CALL	PUT	FUTURE	Open	Close	
2016/7/7 (木)	0	0	25156	0	0	112131	0.7126	0.7221	
2016/7/6 (水)	0	0	27218	0	0	104364	0.7150	0.7126	
2016/7/5 (火)	0	0	14864	0	0	94311	0.7228	0.7150	
2016/7/1 (金)	0	0	20427	0	0	88981	0.7130	0.7161	
2016/6/30 (木)	0	0	16699	0	0	104078	0.7108	0.7130	
2016/6/29 (水)	0	0	15103	0	0	103627	0.7055	0.7110	
2016/6/28 (火)	0	0	21888	0	0	105545	0.6996	0.7055	
2016/6/27 (月)	0	0	29961	0	0	109492	0.7075	0.6996	
2016/6/24 (金)	0	0	19976	0	0	104797	0.7247	0.7118	
2016/6/23 (木)	0	0	18617	0	0	88059	0.7176	0.7247	

MEX Peso		取扱高			当日含む前5営業日計			参考レート	
Date	CALL	PUT	FUTURE	CALL	PUT	FUTURE	Open	Close	
2016/7/7 (木)	15	0	37281	260	253	266374	5.3610	5.3084	
2016/7/6 (水)	70	72	54167	330	327	264092	5.3003	5.3259	
2016/7/5 (火)	12	0	52902	347	525	249926	5.3528	5.3143	
2016/7/1 (金)	32	22	57491	652	973	233113	5.4595	5.4462	
2016/6/30 (木)	131	159	64533	693	971	246188	5.4072	5.4642	
2016/6/29 (水)	85	74	34999	641	812	222913	5.3490	5.4018	
2016/6/28 (火)	87	270	40001	578	775	221903	5.2768	5.3156	
2016/6/27 (月)	317	448	36089	596	624	211065	5.2861	5.2144	
2016/6/24 (金)	73	20	70566	329	367	207469	5.2650	5.2760	
2016/6/23 (木)	79	0	41258	256	357	169491	5.4740	5.4807	

過去5日及び過去4週の4本値と各種ピボット

2016/07/04 ~ 2016/07/08

USD/JPY										Demark				Pivot				Fibonacci Zone								
当日のOHLCLから計算される翌日の										TD Range Projection				TD pivot points												
日足	Open	High	Low	Close	値幅/日	引け形態	真の高値	真の安値	予想高値	予想安値	予想高値	予想安値	StopLoss	Support	Pivot	Resistance	StopLoss	3-days AVG	Support Zone 2	Support Zone 1	BP	Resistance Zone 1	Resistance Zone 2			
													LBOP	S2	S1	PP	R1	R2	HBOP							
2016/07/04	102.66	102.81	102.43	102.54	38p	陰線引け	-	-	-	-	102.00	102.21	102.38	102.59	102.75	102.97	103.13			102.07 ~ 102.21	102.36 ~ 102.40	102.59	102.78 ~ 102.82	102.97 ~ 103.11		
2016/07/05	102.54	102.59	101.46	101.74	113p	陰線引け	102.59	101.46	102.16	101.03	102.16	101.03	100.13	100.79	101.27	101.93	102.40	103.06	103.53		100.36 ~ 100.79	101.23 ~ 101.36	101.93	102.49 ~ 102.63	103.06 ~ 103.49	
2016/07/06	101.73	101.74	100.21	101.39	153p	陰線引け	101.74	100.21	101.56	100.03	101.56	100.03	98.96	99.58	100.48	101.11	102.01	102.64	103.54	101.88	Bear	99.00 ~ 99.58	100.17 ~ 100.35	101.11	101.87 ~ 102.05	102.64 ~ 103.22
2016/07/07	101.39	101.40	100.60	100.77	80p	陰線引け	101.40	100.60	101.09	100.28	101.09	100.28	99.64	100.12	100.45	100.92	101.25	101.73	102.05	101.32	Bear	99.81 ~ 100.12	100.43 ~ 100.52	100.92	101.33 ~ 101.42	101.73 ~ 102.04
2016/07/08	100.77	101.27	100.00	100.47	127p	陰線引け	101.27	100.00	100.87	99.60	100.87	99.60	98.62	99.31	99.89	100.58	101.16	101.85	102.43	100.87	Bear	99.83 ~ 99.31	99.80 ~ 99.95	100.58	101.21 ~ 101.36	101.85 ~ 102.33
週足	Open	High	Low	Close	値幅/週	引け形態	真の高値	真の安値	予想高値	予想安値	予想高値	予想安値	LBOP	S2	S1	PP	R1	R2	HBOP	3-days AVG	Support Zone 2	Support Zone 1	BP	Resistance Zone 1	Resistance Zone 2	
2016/06/13 ~ 2016/06/17	106.82	106.84	103.55	104.19	329p	陰線引け	-	-	-	-	99.59	101.57	102.88	104.86	106.17	108.15	109.46				100.31 ~ 101.57	102.83 ~ 103.22	104.86	106.50 ~ 106.89	108.15 ~ 109.41	
2016/06/20 ~ 2016/06/24	104.73	106.81	99.10	102.27	771p	陰線引け	106.81	102.27	104.54	100.00	104.54	96.83	90.94	95.02	98.64	102.73	106.35	110.43	114.06		92.07 ~ 95.02	97.96 ~ 98.87	102.73	106.58 ~ 107.49	108.15 ~ 113.38	
2016/06/27 ~ 2016/07/01	101.85	103.39	101.43	102.57	196p	陰線引け	103.39	101.43	103.96	102.00	103.96	102.00	99.57	100.50	101.54	102.46	103.50	104.43	105.46	103.35	Bear	99.75 ~ 100.50	101.25 ~ 101.48	102.46	103.45 ~ 103.68	104.43 ~ 105.18
2016/07/04 ~ 2016/07/08	102.66	102.81	100.00	100.47	280p	陰線引け	102.81	100.00	101.64	98.83	101.64	98.83	96.58	98.29	99.38	101.09	102.18	103.90	104.99	102.09	Bear	97.22 ~ 98.29	99.36 ~ 99.69	101.09	102.49 ~ 102.82	103.90 ~ 104.97

EUR/JPY										Demark				Pivot				Fibonacci Zone								
当日のOHLCLから計算される翌日の										TD Range Projection				TD pivot points												
日足	Open	High	Low	Close	値幅/日	引け形態	真の高値	真の安値	予想高値	予想安値	予想高値	予想安値	StopLoss	Support	Pivot	Resistance	StopLoss	3-days AVG	Support Zone 2	Support Zone 1	BP	Resistance Zone 1	Resistance Zone 2			
													LBOP	S2	S1	PP	R1	R2	HBOP							
2016/07/04	114.31	114.51	113.97	114.32	55p	陰線引け	-	-	-	-	113.47	113.72	114.02	114.27	114.57	114.81	115.11				113.51 ~ 113.72	113.93 ~ 113.99	114.27	114.54 ~ 114.60	114.81 ~ 115.02	
2016/07/05	114.32	114.36	112.40	112.58	197p	陰線引け	114.36	112.40	113.47	111.50	113.47	111.50	109.90	111.15	111.86	113.11	113.83	115.08	115.80		110.39 ~ 111.15	111.90 ~ 112.13	113.11	114.10 ~ 114.33	115.08 ~ 115.83	
2016/07/06	112.58	112.61	110.84	112.49	177p	陰線引け	112.61	110.84	112.55	110.77	112.55	110.77	109.57	110.20	111.34	111.98	113.12	113.75	114.89	113.12	Bear	109.53 ~ 110.20	110.88 ~ 111.09	111.98	112.86 ~ 113.07	113.75 ~ 114.43
2016/07/07	112.49	112.52	111.22	111.48	130p	陰線引け	112.52	111.22	112.00	110.70	112.00	110.70	109.66	110.44	110.96	111.74	112.26	113.04	113.55	112.28	Bear	109.95 ~ 110.44	110.94 ~ 111.09	111.74	112.39 ~ 112.54	113.04 ~ 113.53
2016/07/08	111.48	111.85	110.87	111.04	98p	陰線引け	111.85	110.87	111.44	110.46	111.44	110.46	109.67	110.27	110.65	111.25	111.64	112.23	112.62	111.66	Bear	109.90 ~ 110.27	110.65 ~ 110.76	111.25	111.74 ~ 111.86	112.23 ~ 112.61
週足	Open	High	Low	Close	値幅/週	引け形態	真の高値	真の安値	予想高値	予想安値	予想高値	予想安値	LBOP	S2	S1	PP	R1	R2	HBOP	3-days AVG	Support Zone 2	Support Zone 1	BP	Resistance Zone 1	Resistance Zone 2	
2016/06/13 ~ 2016/06/17	120.15	120.33	115.51	117.52	482p	陰線引け	-	-	-	-	110.42	112.96	115.24	117.78	120.06	122.60	124.88				111.12 ~ 112.96	114.80 ~ 115.37	117.78	120.19 ~ 120.76	122.60 ~ 124.44	
2016/06/20 ~ 2016/06/24	118.54	121.90	109.36	113.38	1254p	陰線引け	121.90	109.36	117.64	109.12	117.64	105.10	95.32	102.34	107.86	114.88	120.40	127.42	132.94		97.55 ~ 102.34	107.13 ~ 108.61	114.88	121.15 ~ 122.63	127.42 ~ 132.21	
2016/06/27 ~ 2016/07/01	112.43	114.80	111.41	114.19	338p	陰線引け	114.80	111.41	116.18	112.80	116.18	112.80	108.75	110.08	112.13	113.47	115.52	116.85	118.90	115.38	Bear	108.79 ~ 110.08	111.37 ~ 111.77	113.47	115.16 ~ 115.56	116.85 ~ 118.14
2016/07/04 ~ 2016/07/08	114.31	114.51	110.84	111.04	368p	陰線引け	114.51	110.84	112.77	109.10	112.77	109.10	106.07	108.45	109.74	112.13	113.42	115.80	117.09	113.49	Bear	107.05 ~ 108.45	109.86 ~ 110.29	112.13	113.97 ~ 114.40	115.80 ~ 117.21

EUR/USD										Demark				Pivot				Fibonacci Zone								
当日のOHLCLから計算される翌日の										TD Range Projection				TD pivot points												
日足	Open	High	Low	Close	値幅/日	引け形態	真の高値	真の安値	予想高値	予想安値	予想高値	予想安値	StopLoss	Support	Pivot	Resistance	StopLoss	3-days AVG	Support Zone 2	Support Zone 1	BP	Resistance Zone 1	Resistance Zone 2			
													LBOP	S2	S1	PP	R1	R2	HBOP							
2016/07/04	1.1135	1.1164	1.1098	1.1149	66p	陰線引け	-	-	-	-	1.1044	1.1071	1.1110	1.1137	1.1176	1.1203	1.1242				1.1046 ~ 1.1071	1.1096 ~ 1.1104	1.1137	1.1170 ~ 1.1178	1.1203 ~ 1.1228	
2016/07/05	1.1149	1.1184	1.1063	1.1066	122p	陰線引け	1.1184	1.1063	1.1125	1.1003	1.1125	1.1003	1.0902	1.0982	1.1024	1.1104	1.1146	1.1226	1.1268		1.0936 ~ 1.0982	1.1029 ~ 1.1043	1.1104	1.1165 ~ 1.1180	1.1226 ~ 1.1273	
2016/07/06	1.1067	1.1112	1.1030	1.1095	82p	陰線引け	1.1112	1.1030	1.1144	1.1062	1.1144	1.1062	1.0965	1.0997	1.1046	1.1079	1.1128	1.1160	1.1209	1.1107	Bear	1.0966 ~ 1.0997	1.1028 ~ 1.1038	1.1079	1.1120 ~ 1.1129	1.1160 ~ 1.1192
2016/07/07	1.1095	1.1107	1.1053	1.1063	54p	陰線引け	1.1107	1.1053	1.1085	1.1030	1.1085	1.1030	1.0987	1.1020	1.1041	1.1074	1.1096	1.1129	1.1150	1.1086	Bear	1.0999 ~ 1.1020	1.1041 ~ 1.1047	1.1074	1.1101 ~ 1.1108	1.1129 ~ 1.1150
2016/07/08	1.1063	1.1120	1.1003	1.1052	117p	陰線引け	1.1120	1.1003	1.1086	1.0968	1.1086	1.0968	1.0879	1.0941	1.0996	1.1058	1.1114	1.1176	1.1231	1.1070	Bear	1.0896 ~ 1.0941	1.0986 ~ 1.0999	1.1058	1.1117 ~ 1.1131	1.1176 ~ 1.1220
週足	Open	High	Low	Close	値幅/週	引け形態	真の高値	真の安値	予想高値	予想安値	予想高値	予想安値	LBOP	S2	S1	PP	R1	R2	HBOP	3-days AVG	Support Zone 2	Support Zone 1	BP	Resistance Zone 1	Resistance Zone 2	
2016/06/13 ~ 2016/06/17	1.1249	1.1303	1.1131	1.1280	172p	陰線引け	-	-	-	-	1.1001	1.1066	1.1173	1.1238	1.1345	1.1410	1.1516				1.1001 ~ 1.1066	1.1132 ~ 1.1152	1.1238	1.1324 ~ 1.1344	1.1410 ~ 1.1475	
2016/06/20 ~ 2016/06/24	1.1318	1.1422	1.0905	1.1087	517p	陰線引け	1.1422	1.0905	1.1254	1.0919	1.1254	1.0737	1.0337	1.0621	1.0854	1.1138	1.1371	1.1655	1.1888		1.0423 ~ 1.0621	1.0818 ~ 1.0879	1.1138	1.1396 ~ 1.1457	1.1655 ~ 1.1852	
2016/06/27 ~ 2016/07/01	1.1038	1.1169	1.0971	1.1132	198p	陰線引け	1.1169	1.0971	1.1249	1.1052	1.1249	1.1052	1.0815	1.0893	1.1013	1.1091	1.1210	1.1288	1.1408	1.1155	Bear	1.0817 ~ 1.0893	1.0969 ~ 1.0992	1.1091	1.1190 ~ 1.1213	1.1288 ~ 1.1364
2016/07/04 ~ 2016/07/08	1.1135	1.1184	1.1003	1.1052	182p	陰線引け	1.1184	1.1003	1.1118	1.0936	1.1118	1.0936	1.0793	1.0898	1.0975	1.1080	1.1157	1.1261	1.1338	1.1103	Bear	1.0828 ~ 1.0898	1.0967 ~ 1.0989	1.1080	1.1170 ~ 1.1192	1.1261 ~ 1.1331

GBP/JPY										Demark				Pivot				Fibonacci Zone						
当日のOHLCLから計算される翌日の										TD Range Projection				TD pivot points										
日足	Open	High	Low	Close	値幅/日	引け形態	真の高値	真の安値	予想高値	予想安値	予想高値	予想安値	StopLoss	Support	Pivot	Resistance	StopLoss	3-days AVG	Support Zone 2	Support Zone 1	BP	Resistance Zone 1	Resistance Zone 2	
													LBOP	S2	S1	PP	R1	R2	HBOP					
2016/07/04	136.35	136.80	135.86	136.19	92p	陰線引け	-	-	-	-	134.84	135.35												

IMM扱い8通貨/ダウ/日経/金/オイル/主要クロス円の過去5日及び過去5週の4本値

AUDUSD 5					CADUSD 5					CHFUSD 5				
Date	Open	High	Low	Close	Date	Open	High	Low	Close	Date	Open	High	Low	Close
2016/07/08	0.7482	0.7571	0.7471	0.7565	2016/07/08	0.7691	0.7699	0.7640	0.7668	2016/07/08	1.0215	1.0243	1.0137	1.0164
2016/07/07	0.7516	0.7539	0.7468	0.7481	2016/07/07	0.7712	0.7765	0.7680	0.7691	2016/07/07	1.0253	1.0266	1.0212	1.0214
2016/07/06	0.7460	0.7529	0.7408	0.7516	2016/07/06	0.7700	0.7723	0.7659	0.7712	2016/07/06	1.0232	1.0266	1.0199	1.0252
2016/07/05	0.7533	0.7544	0.7454	0.7460	2016/07/05	0.7782	0.7784	0.7682	0.7700	2016/07/05	1.0295	1.0323	1.0231	1.0232
2016/07/04	0.7459	0.7545	0.7459	0.7532	2016/07/04	0.7742	0.7793	0.7741	0.7783	2016/07/04	1.0272	1.0307	1.0248	1.0295

CNYUSD 5					EURUSD 5					GBPUSD 5				
Date	Open	High	Low	Close	Date	Open	High	Low	Close	Date	Open	High	Low	Close
2016/07/08	0.1493	0.1494	0.1493	0.1493	2016/07/08	1.1063	1.1120	1.1003	1.1052	2016/07/08	1.2915	1.3019	1.2881	1.2945
2016/07/07	0.1493	0.1494	0.1492	0.1494	2016/07/07	1.1095	1.1107	1.1053	1.1063	2016/07/07	1.2927	1.3048	1.2877	1.2916
2016/07/06	0.1494	0.1494	0.1491	0.1492	2016/07/06	1.1067	1.1112	1.1030	1.1095	2016/07/06	1.3021	1.3028	1.2799	1.2927
2016/07/05	0.1498	0.1498	0.1495	0.1496	2016/07/05	1.1149	1.1184	1.1063	1.1066	2016/07/05	1.3283	1.3285	1.3000	1.3022
2016/07/04	0.1499	0.1499	0.1497	0.1497	2016/07/04	1.1135	1.1164	1.1098	1.1149	2016/07/04	1.3281	1.3339	1.3241	1.3282

JPYUSD 5					MXNUSD 5					NZDUSD 5				
Date	Open	High	Low	Close	Date	Open	High	Low	Close	Date	Open	High	Low	Close
2016/07/08	0.9923	0.9999	0.9876	0.9953	2016/07/08	0.0531	0.0542	0.0531	0.0540	2016/07/08	0.7221	0.7307	0.7215	0.7293
2016/07/07	0.9863	0.9941	0.9862	0.9924	2016/07/07	0.0536	0.0536	0.0528	0.0531	2016/07/07	0.7126	0.7235	0.7117	0.7221
2016/07/06	0.9830	0.9979	0.9830	0.9863	2016/07/06	0.0530	0.0534	0.0528	0.0533	2016/07/06	0.7150	0.7151	0.7080	0.7126
2016/07/05	0.9753	0.9857	0.9748	0.9829	2016/07/05	0.0535	0.0537	0.0531	0.0531	2016/07/05	0.7228	0.7235	0.7140	0.7150
2016/07/04	0.9741	0.9763	0.9727	0.9753	2016/07/04	0.0544	0.0546	0.0542	0.0543	2016/07/04	0.7175	0.7241	0.7169	0.7228

Nikkei 225 - Japonia (NIKKEI) 5						
Date	Open	High	Low	Close	(ドル建て終値)	出来高
2016/07/08	15326.84	15399.70	15106.52	15106.98	150.15	1294759936 1845242700
2016/07/07	15346.81	15418.90	15241.91	15276.24	151.25	1272944256 1832931800
2016/07/06	15434.46	15434.46	15167.98	15378.99	152.28	1584485888 2216782600
2016/07/05	15682.16	15702.04	15602.73	15669.33	154.03	1092102528 1578476100
2016/07/04	15554.04	15805.31	15553.92	15775.80	153.60	1085337600 1579507500
週4本値	15554.04	15805.31	15106.52	15106.98	150.15	(N225銘柄計)【東証一部全体計】

XAUUSD 5				
Date	Open	High	Low	Close
2016/07/08	1359.61	1370.44	1335.60	1366.65
2016/07/07	1363.91	1370.56	1351.24	1360.88
2016/07/06	1356.08	1375.42	1356.08	1364.00
2016/07/05	1348.11	1357.88	1338.51	1356.40
2016/07/04	1342.73	1357.54	1337.16	1350.93
週4本値	1342.73	1375.42	1335.60	1366.65

Dow Jones Industrial - USA (DJIA)					5営業日以内に休業日あり	
Date	Open	High	Low	Close	出来高	
2016/07/08	17971.22	18166.77	17971.22	18146.74	93462025	
2016/07/07	17924.24	17984.95	17816.65	17895.88	81574932	
2016/07/06	17807.47	17926.91	17713.45	17918.62	93002659	
2016/07/05	17904.45	17904.45	17785.28	17840.62	103671031	
2016/07/01	17924.24	18002.38	17916.91	17949.37	82158340	
週4本値	17924.24	18166.77	17713.45	18146.74	93462025	

Historical Data by **Stooq**
 Historical Data by **MarketNewsline** (ダウと日経)
 Arrangement by **FX_勝てば官軍?**

Crude Light Oil 5						
Date	Open	High	Low	Close	Volume	
2016/07/08	45.20	45.96	44.80	45.16	0	
2016/07/07	47.86	48.25	44.89	45.21	0	
2016/07/06	46.79	47.93	45.95	47.91	0	
2016/07/05	48.69	48.74	46.36	46.86	1042159	
2016/07/04	49.20	49.35	48.69	48.76	728691	
週4本値	49.20	49.35	44.80	45.16		

USDJPY 5					EURJPY 5					GBPJPY 5				
日付	始値	高値	安値	終値	日付	始値	高値	安値	終値	日付	始値	高値	安値	終値
2016/07/08	100.77	101.27	100.00	100.47	2016/07/08	111.48	111.85	110.87	111.04	2016/07/08	130.15	130.89	129.67	130.06
2016/07/07	101.39	101.40	100.60	100.77	2016/07/07	112.49	112.52	111.22	111.48	2016/07/07	131.07	131.96	129.59	130.15
2016/07/06	101.73	101.74	100.21	101.39	2016/07/06	112.58	112.61	110.84	112.49	2016/07/06	132.47	132.51	128.82	131.07
2016/07/05	102.54	102.59	101.46	101.74	2016/07/05	114.32	114.36	112.40	112.58	2016/07/05	136.20	136.26	132.04	132.48
2016/07/04	102.66	102.81	102.43	102.54	2016/07/04	114.31	114.51	113.97	114.32	2016/07/04	136.35	136.80	135.86	136.19

USDJPY Weekly 28					EURJPY Weekly 28					GBPJPY Weekly 28				
日付	始値	高値	安値	終値	日付	始値	高値	安値	終値	日付	始値	高値	安値	終値
2016/07/08	102.66	102.81	100.00	100.47	2016/07/08	114.31	114.51	110.84	111.04	2016/07/08	136.35	136.80	128.82	130.06
2016/07/01	101.85	103.39	101.43	102.57	2016/07/01	112.43	114.80	111.41	114.19	2016/07/01	136.64	139.00	133.37	136.21
2016/06/24	104.73	106.81	99.10	102.27	2016/06/24	118.54	121.90	109.36	113.38	2016/06/24	151.34	159.97	132.99	139.43
2016/06/17	106.82	106.84	103.55	104.19	2016/06/17	120.15	120.33	115.51	117.52	2016/06/17	152.11	152.38	145.41	149.65
2016/06/10	106.51	107.90	106.27	106.78	2016/06/10	121.06	122.70	119.92	120.16	2016/06/10	154.23	157.76	151.52	152.27

先週のIMM取り扱い対ドル8通貨チャート

※ 赤点線は週最高値/青天線は週最低値、BB中心線はSMA21

2016/07/04 ~ 2016/07/08

Chart by OANDA Japan MetaTrader4

