

JAPANESE YEN - CHICAGO MERCANTILE EXCHANGE

Code-097741

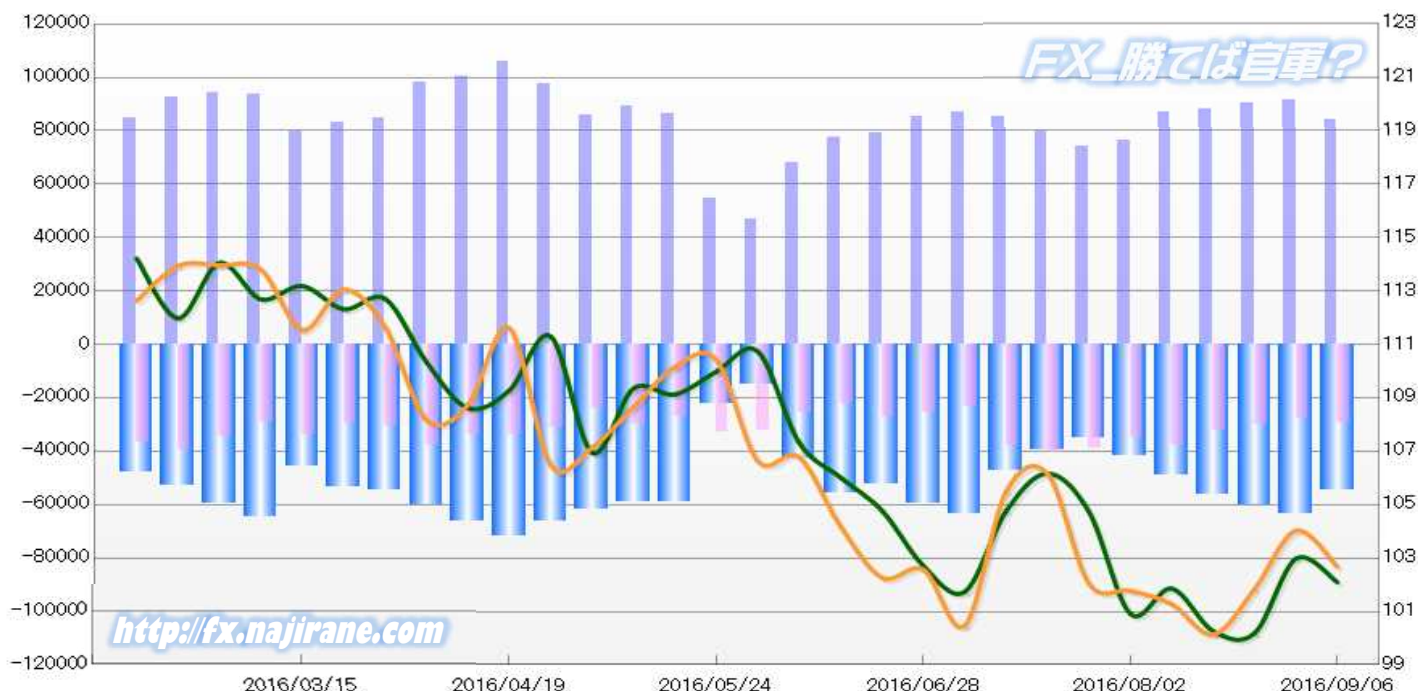
2016/03/15 ~ 2016/09/06

2016/09/09 NYクロース時公表値

Report_Date	Non Commercial Positions												火曜日 引け値	金曜日 引け値
	Long	増減	増減(%)	Short	増減	増減(%)	売り越し	増減	増減(%)	売買計	増減	増減(%)		
2016/09/06	83968	-7602	-8.3%	29479	1570	5.6%	-54489	-9172	-14.4%	113447	-6032	-5.0%	102.10	102.68
2016/08/30	91570	1183	1.3%	27909	-2162	-7.2%	-63661	3345	5.5%	119479	-979	-0.8%	102.98	104.03
2016/08/23	90387	2114	2.4%	30071	-2196	-6.8%	-60316	4310	7.7%	120458	-82	-0.1%	100.19	101.84
2016/08/16	88273	1554	1.8%	32267	-5621	-14.8%	-56006	7175	14.7%	120540	-4067	-3.3%	100.27	100.14
2016/08/09	86719	10144	13.2%	37888	3013	8.6%	-48831	7131	17.1%	124607	13157	11.8%	101.86	101.28
2016/08/02	76575	2501	3.4%	34875	-4241	-10.8%	-41700	6742	19.3%	111450	-1740	-1.5%	100.92	101.78
2016/07/26	74074	-5790	-7.2%	39116	-1395	-3.4%	-34958	-4395	-11.2%	113190	-7185	-6.0%	104.74	102.05
2016/07/19	79864	-5500	-6.4%	40511	2692	7.1%	-39353	-8192	-17.2%	120375	-2808	-2.3%	106.17	106.16
2016/07/12	85364	-1673	-1.9%	37819	14350	61.1%	-47545	-16023	-25.2%	123183	12677	11.5%	104.76	105.49
2016/07/05	87037	1544	1.8%	23469	-2274	-8.8%	-63568	3818	6.4%	110506	-730	-0.7%	101.74	100.47
2016/06/28	85493	6095	7.7%	25743	-1359	-5.0%	-59750	7454	14.3%	111236	4736	4.4%	102.71	102.57
2016/06/21	79398	1695	2.2%	27102	5089	23.1%	-52296	-3394	-6.1%	106500	6784	6.4%	104.78	102.27
2016/06/14	77703	9466	13.9%	22013	-3371	-13.3%	-55690	12837	30.0%	99716	6095	6.5%	106.02	104.19
2016/06/07	68237	21273	45.3%	25384	-6743	-21.0%	-42853	28016	188.8%	93621	14530	18.4%	107.33	106.78
2016/05/31	46964	-7828	-14.3%	32127	-606	-1.9%	-14837	-7222	-32.7%	79091	-8434	-9.6%	110.74	106.64
2016/05/24	54792	-31373	-36.4%	32733	5487	20.1%	-22059	-36860	-62.6%	87525	-25886	-22.8%	109.98	110.42
2016/05/17	86165	-2732	-3.1%	27246	-2604	-8.7%	-58919	-128	-0.2%	113411	-5336	-4.5%	109.13	110.16
2016/05/10	88897	3270	3.8%	29850	5744	23.8%	-59047	-2474	-4.0%	118747	9014	8.2%	109.35	108.65
2016/05/03	85627	-11843	-12.2%	24106	-6866	-22.2%	-61521	-4977	-7.5%	109733	-18709	-14.6%	106.95	107.14
2016/04/26	97470	-8240	-7.8%	30972	-2868	-8.5%	-66498	-5372	-7.5%	128442	-11108	-8.0%	111.30	106.48
2016/04/19	105710	5590	5.6%	33840	-90	-0.3%	-71870	5680	8.6%	139550	5500	4.1%	109.27	111.62
2016/04/12	100120	1990	2.0%	33930	-4127	-10.8%	-66190	6117	10.2%	134050	-2137	-1.6%	108.62	108.73
2016/04/05	98130	13260	15.6%	38057	7574	24.8%	-60073	5686	10.5%	136187	20834	18.1%	110.34	108.17
2016/03/29	84870	2058	2.5%	30483	1017	3.5%	-54387	1041	2.0%	115353	3075	2.7%	112.71	111.65
2016/03/22	82812	3386	4.3%	29466	-4471	-13.2%	-53346	7857	17.3%	112278	-1085	-1.0%	112.32	113.06
2016/03/15	79426			33937			-45489			113363			113.19	111.54

JAPANESE YEN - CHICAGO MERCANTILE EXCHANGE  
FUTURES ONLY POSITIONS

— 金曜終値 — 火曜終値 — Short枚数 — Long枚数 ■ 売り越し枚数(マイナスの場合は買越しと読替え)

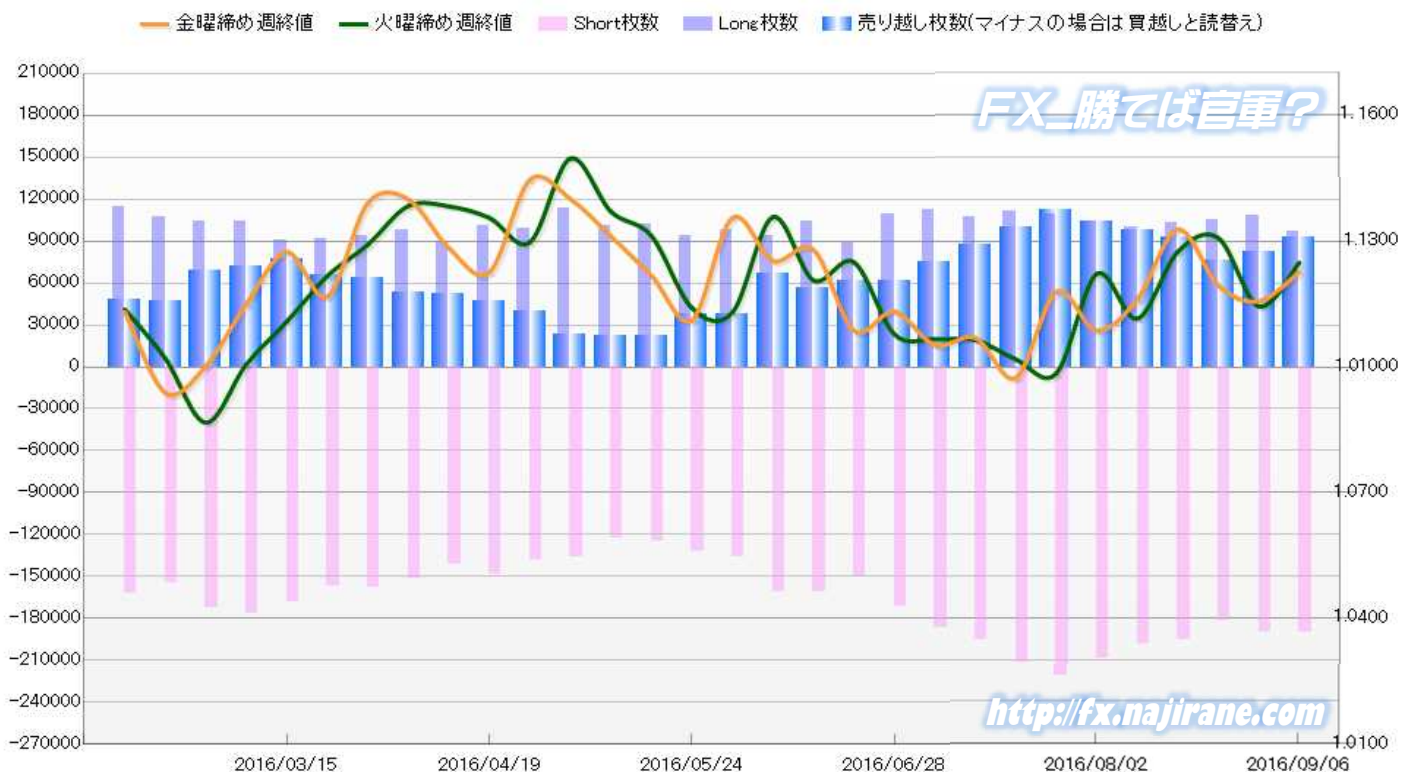


**EURO FX - CHICAGO MERCANTILE EXCHANGE**  
**2016/03/15 ~ 2016/09/06**

Code-099741  
**2016/09/09 NYクローズ時公表値**

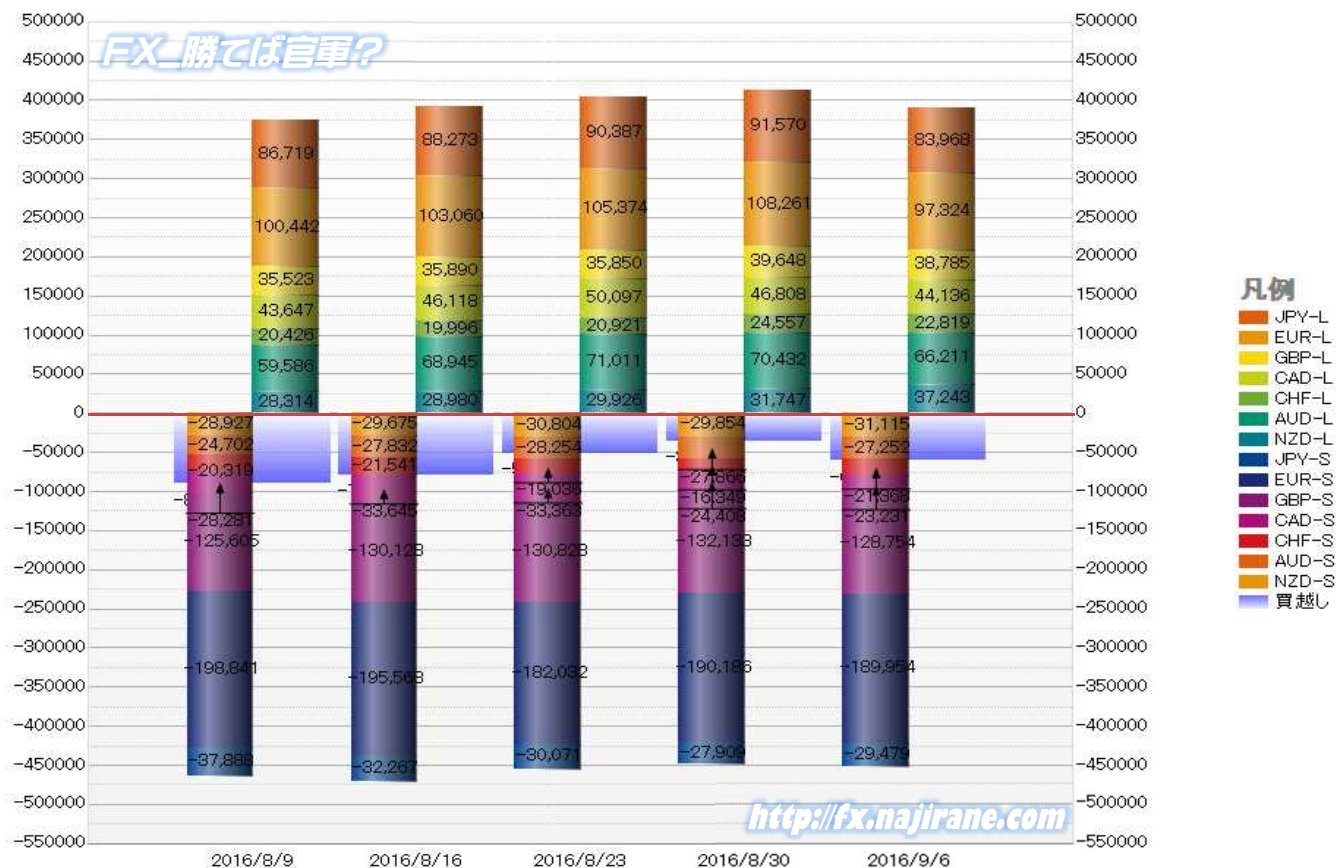
Report_Date	Non Commercial Positions												火曜日 引け値	金曜日 引け値
	Long	増減		Short	増減		売り越し	増減		売買計	増減			
2016/09/06	97324	-10937	-10.1%	189954	-232	-0.1%	92630	10705	13.1%	287278	-11169	-3.7%	1.1249	1.1226
2016/08/30	108261	2887	2.7%	190186	8154	4.5%	81925	5267	6.9%	298447	11041	3.8%	1.1144	1.1157
2016/08/23	105374	2314	2.2%	182032	-13536	-6.9%	76658	-15850	-17.1%	287406	-11222	-3.8%	1.1308	1.1195
2016/08/16	103060	2618	2.6%	195568	-3273	-1.6%	92508	-5891	-6.0%	298628	-655	-0.2%	1.1275	1.1328
2016/08/09	100442	-4074	-3.9%	198841	-9778	-4.7%	98399	-5704	-5.5%	299283	-13852	-4.4%	1.1115	1.1161
2016/08/02	104516	-4677	-4.3%	208619	-13174	-5.9%	104103	-8497	-7.5%	313135	-17851	-5.4%	1.1222	1.1087
2016/07/26	109193	-2385	-2.1%	221793	10324	4.9%	112600	12709	12.7%	330986	7939	2.5%	1.0985	1.1179
2016/07/19	111578	3943	3.7%	211469	16174	8.3%	99891	12231	14.0%	323047	20117	6.6%	1.1018	1.0974
2016/07/12	107635	-4376	-3.9%	195295	7957	4.2%	87660	12333	16.4%	302930	3581	1.2%	1.1065	1.1069
2016/07/05	112011	2431	2.2%	187338	15824	9.2%	75327	13393	21.6%	299349	18255	6.5%	1.1066	1.1052
2016/06/28	109580	20941	23.6%	171514	21529	14.4%	61934	588	1.0%	281094	42470	17.8%	1.1078	1.1132
2016/06/21	88639	-15871	-15.2%	149985	-11014	-6.8%	61346	4857	8.6%	238624	-26885	-10.1%	1.1250	1.1087
2016/06/14	104510	11018	11.8%	160999	395	0.2%	56489	-10623	-15.8%	265509	11413	4.5%	1.1207	1.1280
2016/06/07	93492	-4726	-4.8%	160604	24732	18.2%	67112	29458	78.2%	254096	20006	8.5%	1.1357	1.1253
2016/05/31	98218	4263	4.5%	135872	4022	3.1%	37654	-241	-0.6%	234090	8285	3.7%	1.1130	1.1356
2016/05/24	93955	-7768	-7.6%	131850	7540	6.1%	37895	15308	67.8%	225805	-228	-0.1%	1.1141	1.1111
2016/05/17	101723	446	0.4%	124310	1161	0.9%	22587	715	3.3%	226033	1607	0.7%	1.1313	1.1218
2016/05/10	101277	-11757	-10.4%	123149	-13504	-9.9%	21872	-1747	-7.4%	224426	-25261	-10.1%	1.1371	1.1312
2016/05/03	113034	13962	14.1%	136653	-2086	-1.5%	23619	-16048	-40.5%	249687	11876	5.0%	1.1497	1.1401
2016/04/26	99072	-2139	-2.1%	138739	-9389	-6.3%	39667	-7250	-15.5%	237811	-11528	-4.6%	1.1297	1.1446
2016/04/19	101211	11995	13.4%	148128	6861	4.9%	46917	-5134	-9.9%	249339	18856	8.2%	1.1356	1.1225
2016/04/12	89216	-8798	-9.0%	141267	-10234	-6.8%	52051	-1436	-2.7%	230483	-19032	-7.6%	1.1383	1.1284
2016/04/05	98014	4288	4.6%	151501	-6036	-3.8%	53487	-10324	-16.2%	249515	-1748	-0.7%	1.1384	1.1400
2016/03/29	93726	2392	2.6%	157537	150	0.1%	63811	-2242	-3.4%	251263	2542	1.0%	1.1292	1.1391
2016/03/22	91334	981	1.1%	157387	-10521	-6.3%	66053	-11502	-14.8%	248721	-9540	-3.7%	1.1217	1.1168
2016/03/15	90353			167908			77555			258261			1.1108	1.1274

**EURO FX - CHICAGO MERCANTILE EXCHANGE**  
**FUTURES ONLY POSITIONS**



	2016/08/09			2016/08/16			2016/08/23			2016/08/30			2016/09/06		
	Long	Short	売り越し	Long	Short	売り越し	Long	Short	売り越し	Long	Short	売り越し	Long	Short	売り越し
JPY	86719	37888	-48831	88273	32267	-56006	90387	30071	-60316	91570	27909	-63661	83968	29479	-54489
	前週比 枚数増減 (枚)			1554	-5621	7175	2114	-2196	4310	1183	-2162	3345	-7602	1570	-9172
	前週比 枚数増減 (%)			1.79%	-14.84%	14.69%	2.39%	-6.81%	7.70%	1.31%	-7.19%	5.55%	-8.30%	5.63%	-14.41%
EUR	100442	198841	98399	103060	195568	92508	105374	182032	76658	108261	190186	81925	97324	189954	92630
	前週比 枚数増減 (枚)			2618	-3273	-5891	2314	-13536	-15850	2887	8154	5267	-10937	-232	10705
	前週比 枚数増減 (%)			2.61%	-1.65%	-5.99%	2.25%	-6.92%	-17.13%	2.74%	4.48%	6.87%	-10.10%	-0.12%	13.07%
GBP	35523	125605	90082	35890	130128	94238	35850	130828	94978	39648	132133	92485	38785	128754	89969
	前週比 枚数増減 (枚)			367	4523	4156	-40	700	740	3798	1305	-2493	-863	-3379	-2516
	前週比 枚数増減 (%)			1.03%	3.60%	4.61%	-0.11%	0.54%	0.79%	10.59%	1.00%	-2.62%	-2.18%	-2.56%	-2.72%
AUD	59586	24702	-34884	68945	27832	-41113	71011	28254	-42757	70432	27866	-42566	66211	27252	-38959
	前週比 枚数増減 (枚)			9359	3130	6229	2066	422	1644	-579	-388	-191	-4221	-614	-3607
	前週比 枚数増減 (%)			15.71%	12.67%	17.86%	3.00%	1.52%	4.00%	-0.82%	-1.37%	-0.45%	-5.99%	-2.20%	-8.47%
CAD	43647	28281	-15366	46118	33645	-12473	50097	33363	-16734	46808	24408	-22400	44136	23231	-20905
	前週比 枚数増減 (枚)			2471	5364	-2893	3979	-282	4261	-3289	-8955	5666	-2672	-1177	-1495
	前週比 枚数増減 (%)			5.66%	18.97%	-18.83%	8.63%	-0.84%	34.16%	-6.57%	-26.84%	33.86%	-5.71%	-4.82%	-6.67%
CHF	20426	20319	-107	19996	21541	1545	20921	19036	-1885	24557	16349	-8208	22819	21368	-1451
	前週比 枚数増減 (枚)			-430	1222	1438	925	-2505	340	3636	-2687	6323	-1738	5019	-6757
	前週比 枚数増減 (%)			-2.11%	6.01%	1543.93%	4.63%	-11.63%	-222.01%	17.38%	-14.12%	335.44%	-7.08%	30.70%	-82.32%
NZD	28314	28927	613	28980	29675	695	29926	30804	878	31747	29854	-1893	37243	31115	-6128
	前週比 枚数増減 (枚)			666	748	82	946	1129	183	1821	-950	1015	5496	1261	4235
	前週比 枚数増減 (%)			2.35%	2.59%	13.38%	3.26%	3.80%	26.33%	6.09%	-3.08%	-315.60%	17.31%	4.22%	223.72%
MXN	19963	74325	54362	24542	70265	45723	26845	55386	28541	19848	53082	33234	16790	75189	58399
	前週比 枚数増減 (枚)			4579	-4060	-8639	2303	-14879	-17182	-6997	-2304	4693	-3058	22107	25165
	前週比 枚数増減 (%)			22.94%	-5.46%	-15.89%	9.38%	-21.18%	-37.58%	-26.06%	-4.16%	16.44%	-15.41%	41.65%	75.72%
Total All 8	394620	538888	144268	415804	540921	125117	430411	509774	79363	432871	501787	68916	407276	526342	119066
	前週比 枚数増減 (枚)			21184	2033	-19151	14607	-31147	-45754	2460	-7987	-10447	-25595	24555	50150
	前週比 枚数増減 (%)			5.37%	0.38%	-13.27%	3.51%	-5.76%	-36.57%	0.57%	-1.57%	-13.16%	-5.91%	4.89%	72.77%
Total 7 (MXN除)	374657	464563	89906	391262	470656	79394	403566	454388	50822	413023	448705	35682	390486	451153	60667
	前週比 枚数増減 (枚)			16605	6093	-10512	12304	-16268	-28572	9457	-5683	-15140	-22537	2448	24985
	前週比 枚数増減 (%)			4.4%	1.3%	-11.7%	3.1%	-3.5%	-36.0%	2.3%	-1.3%	-29.8%	-5.5%	0.5%	70.0%

### 直近5週 CFTC IMM主要7通貨の構成

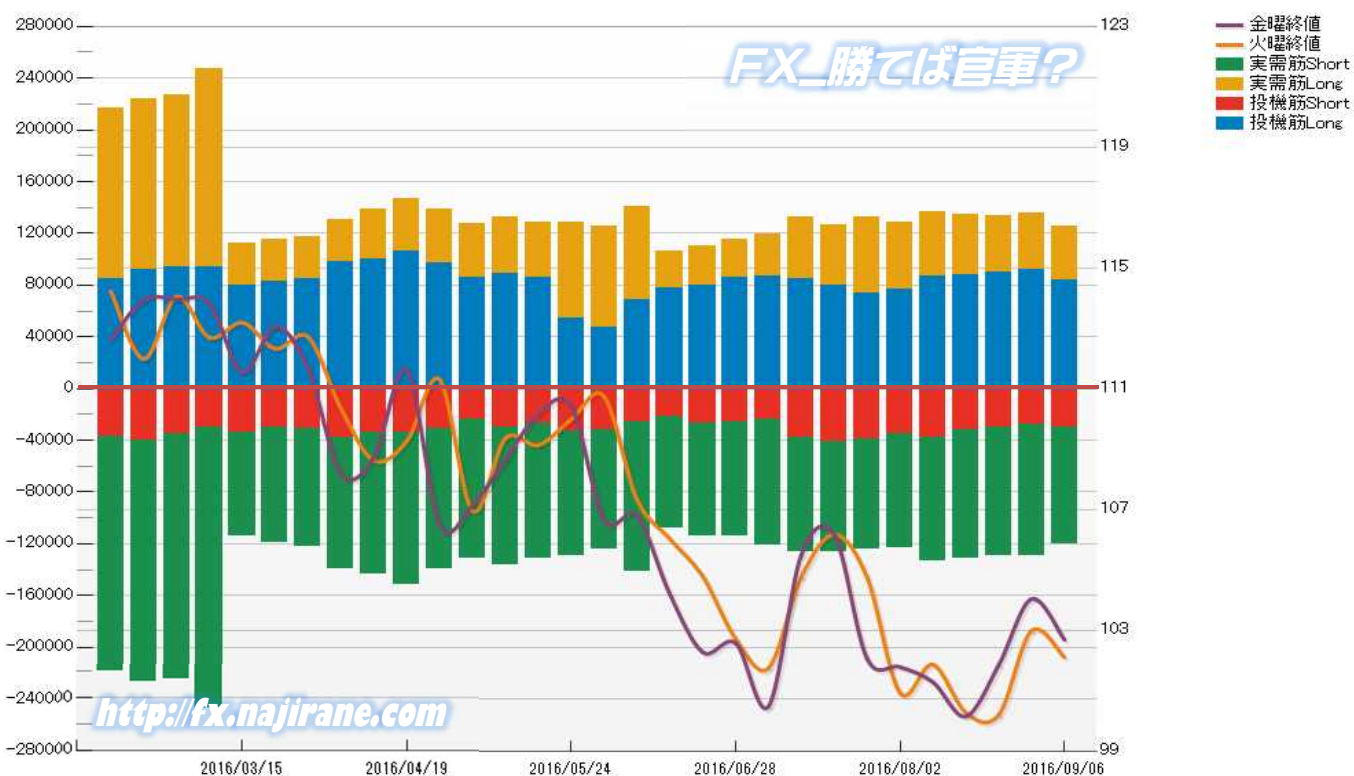


JAPANESE YEN - CHICAGO MERCANTILE EXCHANGE  
FUTURES ONLY POSITIONS

Code-097741  
2016/09/09 公表値

Date	投機筋集計				実需筋集計				投機筋+実需筋合計				ドル円終値	
	円買い	円売り	売り越し	売買計	円買い	円売り	売り越し	売買計	円買い	円売り	売り越し	売買計	火曜締め	金曜締め
2016/09/06	83968	29479	-54489	113447	41120	91024	49904	132144	125088	120503	-4585	245591	102.10	102.68
2016/08/30	91570	27909	-63661	119479	44366	101570	57204	145936	135936	129479	-6457	265415	102.98	104.03
2016/08/23	90387	30071	-60316	120458	43245	99482	56237	142727	133632	129553	-4079	263185	100.19	101.84
2016/08/16	88273	32267	-56006	120540	46280	99196	52916	145476	134553	131463	-3090	266016	100.27	100.14
2016/08/09	86719	37888	-48831	124607	49619	95343	45724	144962	136338	133231	-3107	269569	101.86	101.28
2016/08/02	76575	34875	-41700	111450	51707	88074	36367	139781	128282	122949	-5333	251231	100.92	101.78
2016/07/26	74074	39116	-34958	113190	58947	85458	26511	144405	133021	124574	-8447	257595	104.74	102.05
2016/07/19	79864	40511	-39353	120375	46993	85719	38726	132712	126857	126230	-627	253087	106.17	106.16
2016/07/12	85364	37819	-47545	123183	46842	88850	42008	135692	132206	126669	-5537	258875	104.76	105.49
2016/07/05	87037	23469	-63568	110506	32637	97652	65015	130289	119674	121121	1447	240795	101.74	100.47
2016/06/28	85493	25743	-59750	111236	30249	88316	58067	118565	115742	114059	-1683	229801	102.71	102.57
2016/06/21	79398	27102	-52296	106500	30450	86992	56542	117442	109848	114094	4246	223942	104.78	102.27
2016/06/14	77703	22013	-55690	99716	28678	86062	57384	114740	106381	108075	1694	214456	106.02	104.19
2016/06/07	68237	25384	-42853	93621	72616	116477	43861	189093	140853	141861	1008	282714	107.33	106.78
2016/05/31	46964	32127	-14837	79091	78749	92275	13526	171024	125713	124402	-1311	250115	110.74	106.64
2016/05/24	54792	32733	-22059	87525	73603	96638	23035	170241	128395	129371	976	257766	109.98	110.42
2016/05/17	86165	27246	-58919	113411	41969	104408	62439	146377	128134	131654	3520	259788	109.13	110.16
2016/05/10	88897	29850	-59047	118747	43309	106603	63294	149912	132206	136453	4247	268659	109.35	108.65
2016/05/03	85627	24106	-61521	109733	41904	107399	65495	149303	127531	131505	3974	259036	106.95	107.14
2016/04/26	97470	30972	-66498	128442	40734	108419	67685	149153	138204	139391	1187	277595	111.30	106.48
2016/04/19	105710	33840	-71870	139550	41258	118087	76829	159345	146968	151927	4959	298895	109.27	111.62
2016/04/12	100120	33930	-66190	134050	38652	109410	70758	148062	138772	143340	4568	282112	108.62	108.73
2016/04/05	98130	38057	-60073	136187	32451	101508	69057	133959	130581	139565	8984	270146	110.34	108.17
2016/03/29	84870	30483	-54387	115353	32118	92081	59963	124199	116988	122564	5576	239552	112.71	111.65
2016/03/22	82812	29466	-53346	112278	32265	89776	57511	122041	115077	119242	4165	234319	112.32	113.06
2016/03/15	79426	33937	-45489	113363	32762	79738	46976	112500	112188	113675	1487	225863	113.19	111.54
2016/03/08	93867	29534	-64333	123401	153269	218579	65310	371848	247136	248113	977	495249	112.69	113.81
2016/03/01	94070	34445	-59625	128515	132993	191615	58622	324608	227063	226060	-1003	453123	114.05	113.96
2016/02/23	92376	39642	-52734	132018	131150	188392	57242	319542	223526	228034	4508	451560	111.98	113.94
2016/02/16	84518	36617	-47901	121135	131826	183285	51459	315111	216344	219902	3558	436246	114.22	112.63

JAPANESE YEN - CHICAGO MERCANTILE EXCHANGE  
FUTURES ONLY POSITIONS Code-097741

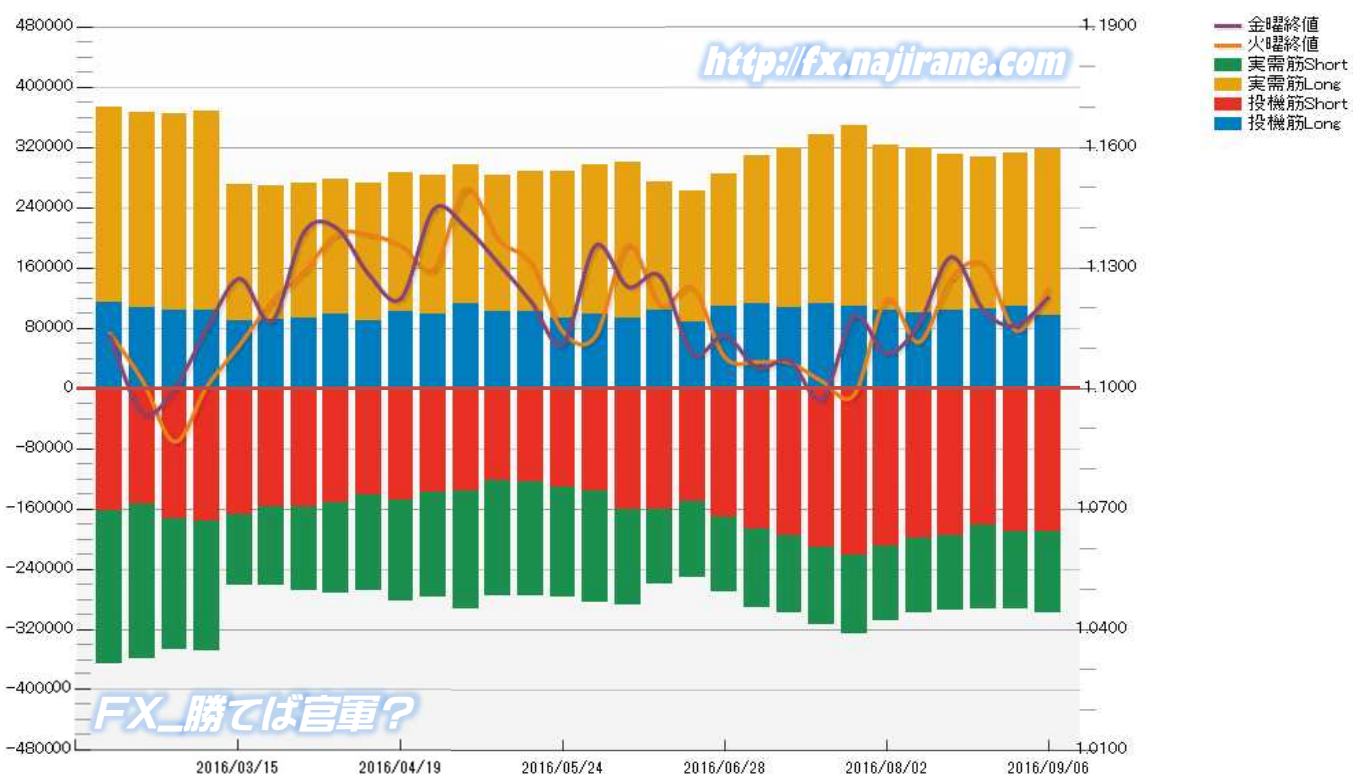


**EURO FX - CHICAGO MERCANTILE EXCHANGE  
FUTURES ONLY POSITIONS**

**Code-099741  
2016/09/09 公表値**

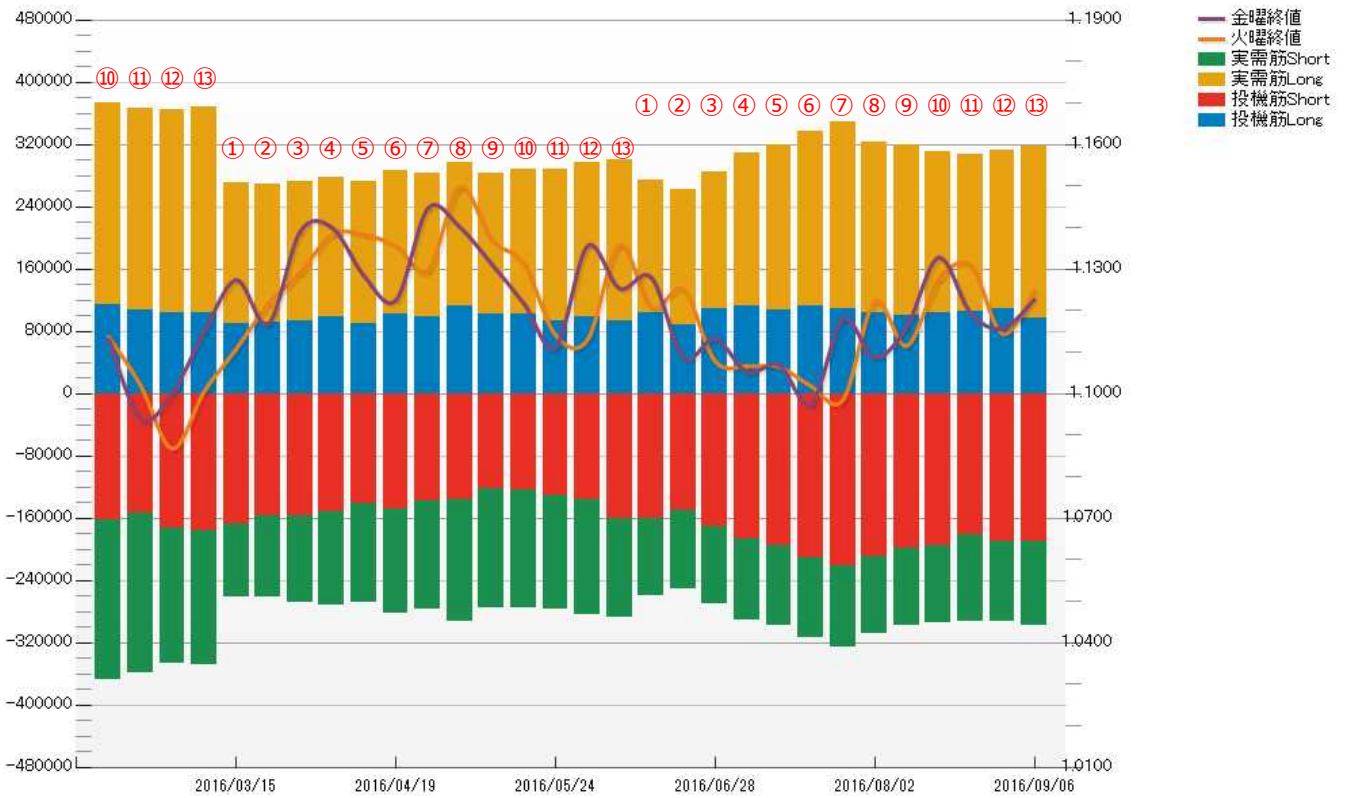
Date	投機筋集計				実需筋集計				投機筋+実需筋合計				ユーロドル終値	
	EUR買い	EUR売り	売り越し	売買計	EUR買い	EUR売り	売り越し	売買計	EUR買い	EUR売り	売り越し	売買計	火曜締め	金曜締め
2016/09/06	97324	189954	92630	287278	220781	107441	-113340	328222	318105	297395	-20710	615500	1.1249	1.1226
2016/08/30	108261	190186	81925	298447	204241	103433	-100808	307674	312502	293619	-18883	606121	1.1144	1.1157
2016/08/23	105374	182032	76658	287406	202180	111006	-91174	313186	307554	293038	-14516	600592	1.1308	1.1195
2016/08/16	103060	195568	92508	298628	208203	99798	-108405	308001	311263	295366	-15897	606629	1.1275	1.1328
2016/08/09	100442	198841	98399	299283	218984	99470	-119514	318454	319426	298311	-21115	617737	1.1115	1.1161
2016/08/02	104516	208619	104103	313135	218778	99452	-119326	318230	323294	308071	-15223	631365	1.1222	1.1087
2016/07/26	109193	221793	112600	330986	239073	103338	-135735	342411	348266	325131	-23135	673397	1.0985	1.1179
2016/07/19	111578	211469	99891	323047	225909	101654	-124255	327563	337487	313123	-24364	650610	1.1018	1.0974
2016/07/12	107635	195295	87660	302930	211520	103371	-108149	314891	319155	298666	-20489	617821	1.1065	1.1069
2016/07/05	112011	187338	75327	299349	197845	104095	-93750	301940	309856	291433	-18423	601289	1.1066	1.1052
2016/06/28	109580	171514	61934	281094	175747	99094	-76653	274841	285327	270608	-14719	555935	1.1078	1.1132
2016/06/21	88639	149985	61346	238624	174231	100833	-73398	275064	262870	250818	-12052	513688	1.1250	1.1087
2016/06/14	104510	160999	56489	265509	168953	98248	-70705	267201	273463	259247	-14216	532710	1.1207	1.1280
2016/06/07	93492	160604	67112	254096	207448	127910	-79538	335358	300940	288514	-12426	589454	1.1357	1.1253
2016/05/31	98218	135872	37654	234090	198726	148012	-50714	346738	296944	283884	-13060	580828	1.1130	1.1356
2016/05/24	93955	131850	37895	225805	193758	145257	-48501	339015	287713	277107	-10606	564820	1.1141	1.1111
2016/05/17	101723	124310	22587	226033	186065	151949	-34116	338014	287788	276259	-11529	564047	1.1313	1.1218
2016/05/10	101277	123149	21872	224426	181863	152379	-29484	334242	283140	275528	-7612	558668	1.1371	1.1312
2016/05/03	113034	136653	23619	249687	184524	156966	-27558	341490	297558	293619	-3939	591177	1.1497	1.1401
2016/04/26	99072	138739	39667	237811	182996	138270	-44726	321266	282068	277009	-5059	559077	1.1297	1.1446
2016/04/19	101211	148128	46917	249339	185459	133519	-51940	318978	286670	281647	-5023	568317	1.1356	1.1225
2016/04/12	89216	141267	52051	230483	182596	126793	-55803	309389	271812	268060	-3752	539872	1.1383	1.1284
2016/04/05	98014	151501	53487	249515	180268	120531	-59737	300799	278282	272032	-6250	550314	1.1384	1.1400
2016/03/29	93726	157537	63811	251263	178491	111140	-67351	289631	272217	268677	-3540	540894	1.1292	1.1391
2016/03/22	91334	157387	66053	248721	176950	103926	-73024	280876	268284	261313	-6971	529597	1.1217	1.1168
2016/03/15	90353	167908	77555	258261	180672	92859	-87813	273531	271025	260767	-10258	531792	1.1108	1.1274
2016/03/08	104165	176072	71907	280237	263377	173378	-89999	436755	367542	349450	-18092	716992	1.1006	1.1150
2016/03/01	103965	172506	68541	276471	260901	174403	-86498	435304	364866	346909	-17957	711775	1.0867	1.1002
2016/02/23	107566	154423	46857	261989	258954	205427	-53527	464381	366520	359850	-6670	726370	1.1020	1.0938
2016/02/16	113970	162175	48205	276145	258996	205232	-53764	464228	372966	367407	-5559	740373	1.1137	1.1132

**EURO FX - CHICAGO MERCANTILE EXCHANGE  
FUTURES ONLY POSITIONS Code-099741**

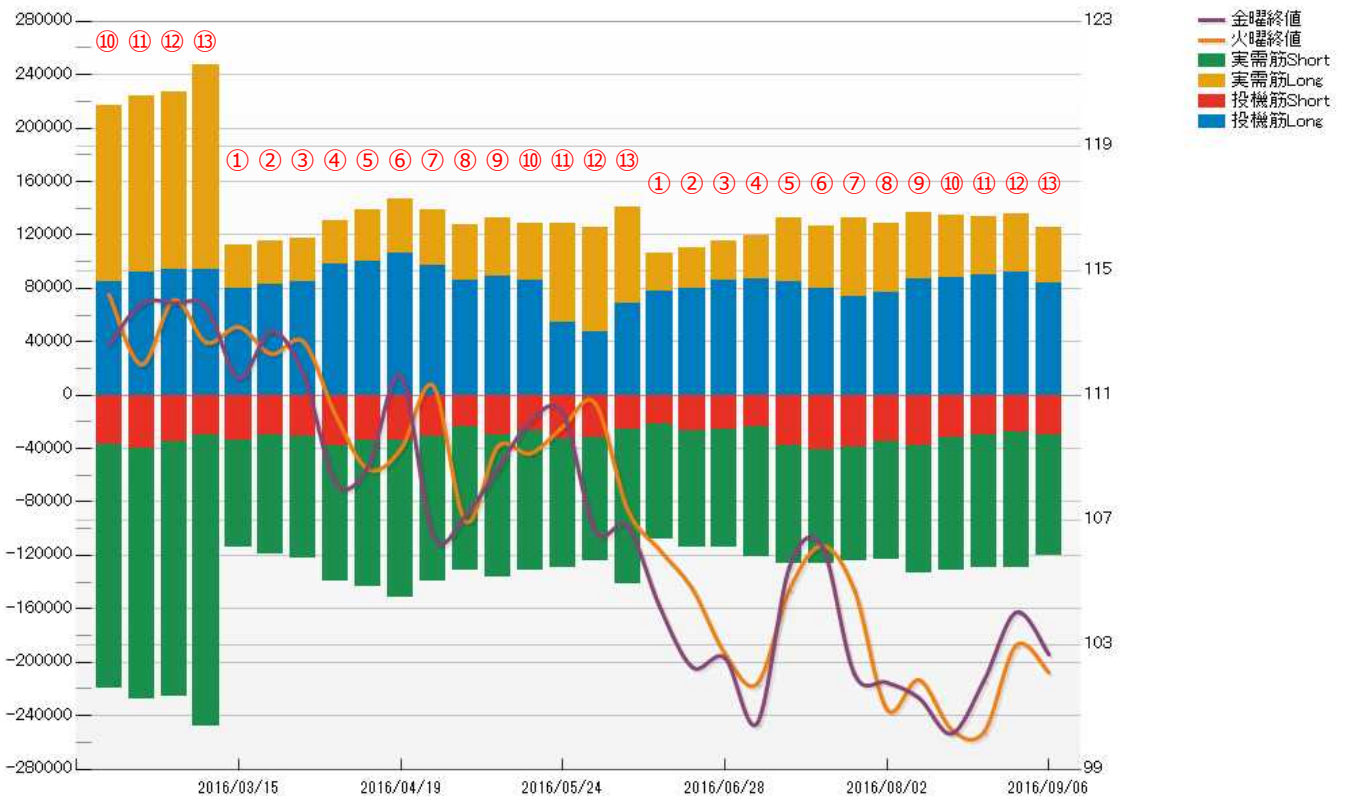


FX\_勝てば官軍?

EURO FX - CHICAGO MERCANTILE EXCHANGE  
FUTURES ONLY POSITIONS Code-099741



JAPANESE YEN - CHICAGO MERCANTILE EXCHANGE  
FUTURES ONLY POSITIONS Code-097741



# CME Daily Volume

シカゴ・マーカントイル取引所 取扱高日次データ

FX\_勝てば官軍?

<http://fx.najirane.com>

EU Euro	取扱高			当日含む前5営業日計			参考レート	
	CALL	PUT	FUTURE	CALL	PUT	FUTURE	Open	Close
2016/9/8 (木)	21901	20389	286241	60811	58167	1129186	1.1239	1.1265
2016/9/7 (水)	9443	8714	156550	48778	45861	995077	1.1249	1.1239
2016/9/6 (火)	12911	10061	302291	47263	43346	969656	1.1147	1.1249
2016/9/2 (金)	11215	12412	206477	42386	38629	784709	1.1197	1.1157
2016/9/1 (木)	5341	6591	177627	43737	40296	842590	1.1158	1.1196
2016/8/31 (水)	9868	8083	152132	42540	39426	769892	1.1144	1.1158
2016/8/30 (火)	7928	6199	131129	39369	38562	740296	1.1187	1.1144
2016/8/29 (月)	8034	5344	117344	38020	36626	718226	1.1186	1.1187
2016/8/26 (金)	12566	14079	264358	34534	36315	705613	1.1285	1.1195
2016/8/25 (木)	4144	5721	104929	27165	25090	565626	1.1263	1.1285

AUS Dollar	取扱高			当日含む前5営業日計			参考レート	
	CALL	PUT	FUTURE	CALL	PUT	FUTURE	Open	Close
2016/9/8 (木)	2183	4125	123737	11723	18619	601576	0.7676	0.7643
2016/9/7 (水)	1082	1678	94628	11268	15632	581836	0.7682	0.7675
2016/9/6 (火)	4111	3740	149690	12170	17540	589284	0.7585	0.7683
2016/9/2 (金)	1442	1301	121966	9128	15294	531181	0.7551	0.7568
2016/9/1 (木)	2905	7775	111555	9717	18191	567588	0.7515	0.7551
2016/8/31 (水)	1728	1138	103997	7861	11472	516607	0.7513	0.7515
2016/8/30 (火)	1984	3586	102076	7401	12146	481662	0.7576	0.7513
2016/8/29 (月)	1069	1494	91587	6914	10373	446845	0.7554	0.7576
2016/8/26 (金)	2031	4198	158373	7042	9498	421224	0.7618	0.7561
2016/8/25 (木)	1049	1056	60574	6310	8163	348754	0.7614	0.7618

CHE Franc	取扱高			当日含む前5営業日計			参考レート	
	CALL	PUT	FUTURE	CALL	PUT	FUTURE	Open	Close
2016/9/8 (木)	6	112	26859	919	658	138249	1.0313	1.0288
2016/9/7 (水)	209	150	26780	1053	683	132888	1.0308	1.0313
2016/9/6 (火)	163	249	31328	1121	544	127567	1.0205	1.0308
2016/9/2 (金)	107	59	21816	1005	654	112453	1.0205	1.0201
2016/9/1 (木)	434	88	31466	1010	691	139538	1.0167	1.0205
2016/8/31 (水)	140	137	21498	652	766	124735	1.0167	1.0167
2016/8/30 (火)	277	11	21459	588	807	122413	1.0222	1.0167
2016/8/29 (月)	47	359	16214	312	797	114589	1.0220	1.0221
2016/8/26 (金)	112	96	48901	492	471	115383	1.0334	1.0221
2016/8/25 (木)	76	163	16663	436	422	91767	1.0341	1.0334

JPN Yen	取扱高			当日含む前5営業日計			参考レート	
	CALL	PUT	FUTURE	CALL	PUT	FUTURE	Open	Close
2016/9/8 (木)	4489	10018	160560	37567	48356	839349	101.72	102.39
2016/9/7 (水)	6997	6271	135768	40154	42638	790874	102.10	101.72
2016/9/6 (火)	10687	13082	231034	38187	43083	784633	103.43	102.10
2016/9/2 (金)	9069	13786	178821	31252	33682	643263	103.23	104.03
2016/9/1 (木)	6325	5199	133166	27674	28781	641478	103.36	103.23
2016/8/31 (水)	7076	4300	112085	23454	26076	566401	102.98	103.36
2016/8/30 (火)	5030	6716	129527	18864	28518	532760	101.90	102.98
2016/8/29 (月)	3752	3681	89664	16223	25525	479859	101.94	101.90
2016/8/26 (金)	5491	8885	177036	14262	23805	474069	100.54	101.84
2016/8/25 (木)	2105	2494	58089	10873	18845	372099	100.46	100.54

CAN Dollar	取扱高			当日含む前5営業日計			参考レート	
	CALL	PUT	FUTURE	CALL	PUT	FUTURE	Open	Close
2016/9/8 (木)	3129	4165	76399	14260	16537	414274	0.7759	0.7735
2016/9/7 (水)	1273	2245	71028	14362	14133	411395	0.7783	0.7761
2016/9/6 (火)	3827	4791	108493	15534	14270	400017	0.7736	0.7783
2016/9/2 (金)	2074	1399	82495	12940	10565	337474	0.7636	0.7698
2016/9/1 (木)	3957	3937	75859	13253	11925	337967	0.7629	0.7637
2016/8/31 (水)	3231	1761	73520	10125	8916	299511	0.7634	0.7629
2016/8/30 (火)	2445	2382	59650	7859	8216	274315	0.7684	0.7636
2016/8/29 (月)	1233	1086	45950	6409	6782	264802	0.7689	0.7685
2016/8/26 (金)	2387	2759	82988	7107	7049	273000	0.7741	0.7692
2016/8/25 (木)	829	928	37403	6029	5330	248562	0.7735	0.7741

NZL Dollar	取扱高			当日含む前5営業日計			参考レート	
	CALL	PUT	FUTURE	CALL	PUT	FUTURE	Open	Close
2016/9/8 (木)	0	0	33298	0	0	178874	0.7451	0.7403
2016/9/7 (水)	0	0	44821	0	0	168016	0.7411	0.7452
2016/9/6 (火)	0	0	33111	0	0	154678	0.7305	0.7412
2016/9/2 (金)	0	0	34267	0	0	131397	0.7295	0.7292
2016/9/1 (木)	0	0	22519	0	0	134763	0.7246	0.7296
2016/8/31 (水)	0	0	19960	0	0	112899	0.7222	0.7246
2016/8/30 (火)	0	0	21540	0	0	112251	0.7255	0.7222
2016/8/29 (月)	0	0	36477	0	0	113128	0.7223	0.7255
2016/8/26 (金)	0	0	12403	0	0	109659	0.7300	0.7229
2016/8/25 (木)	0	0	21871	0	0	89373	0.7308	0.7300

MEX Peso	取扱高			当日含む前5営業日計			参考レート	
	CALL	PUT	FUTURE	CALL	PUT	FUTURE	Open	Close
2016/9/8 (木)	15	100	85599	135	366	399254	5.4538	5.3502
2016/9/7 (水)	2	2	54725	173	320	369167	5.4480	5.4277
2016/9/6 (火)	7	147	111496	189	323	374195	5.3982	5.4661
2016/9/2 (金)	4	81	74262	183	176	305339	5.3190	5.3800
2016/9/1 (木)	107	36	73172	217	97	320114	5.3189	5.3303
2016/8/31 (水)	53	54	55512	110	74	281669	5.3269	5.3182
2016/8/30 (火)	18	5	59753	72	27	275016	5.3591	5.3220
2016/8/29 (月)	1	0	42640	527	165	270517	5.3748	5.3749
2016/8/26 (金)	38	2	89037	547	169	262675	5.4380	5.3855
2016/8/25 (木)	0	13	34727	511	171	217182	5.4171	5.4357

# 過去5日及び過去4週の4本値と各種ピボット

2016/09/05 ~ 2016/09/09

USD/JPY										Demark										Pivot										Fibonacci Zone				
当日のOHLCLから計算される翌日の										TD Range Projection										TD pivot points														
日足	Open	High	Low	Close	値幅/日	引け形態	真の高値	真の安値	予想高値	予想安値	予想高値	予想安値	StopLoss	Support	Pivot	Resistance	StopLoss	3-days AVG	Support Zone 2	Support Zone 1	BP	Resistance Zone 1	Resistance Zone 2											
													LBOp	S2	S1	PP	R1	R2	HBOP															
2016/09/05	104.06	104.12	103.16	103.43	96p	陰線引け	-	-	-	-	-	-	102.06	102.61	103.02	103.57	103.98	104.53	104.94				102.24 ~ 102.61	102.97 ~ 103.09	103.57	104.05 ~ 104.16	104.53 ~ 104.90							
2016/09/06	103.43	103.81	101.94	102.10	187p	陰線引け	103.81	101.94	102.95	101.08	102.95	101.08	99.55	100.75	101.42	102.61	103.29	104.48	105.16				100.03 ~ 100.75	101.46 ~ 101.68	102.61	103.55 ~ 103.77	104.48 ~ 105.19							
2016/09/07	102.10	102.12	101.21	101.72	92p	陰線引け	102.12	101.21	101.92	101.00	101.92	101.00	100.33	100.77	101.24	101.68	102.16	102.60	103.08	102.62	Bear			100.42 ~ 100.77	101.12 ~ 101.22	101.68	102.14 ~ 102.25	102.60 ~ 102.95						
2016/09/08	101.72	102.60	101.42	102.39	118p	陽線引け	102.60	101.42	103.08	101.91	103.08	101.91	100.50	100.96	101.67	102.14	102.85	103.31	104.03	102.14	Bull			100.51 ~ 100.96	101.41 ~ 101.55	102.14	102.73 ~ 102.86	103.31 ~ 103.77						
2016/09/09	102.40	103.05	101.98	102.68	108p	陽線引け	103.05	101.98	103.41	102.33	103.41	102.33	101.02	101.50	102.09	102.57	103.17	103.65	104.24	102.13	Bull			101.09 ~ 101.50	101.91 ~ 102.03	102.57	103.11 ~ 103.24	103.65 ~ 104.06						
週足	Open	High	Low	Close	値幅/週	引け形態	真の高値	真の安値	予想高値	予想安値	予想高値	予想安値	LBOp	S2	S1	PP	R1	R2	HBOP	3-days AVG	Support Zone 2	Support Zone 1	BP	Resistance Zone 1	Resistance Zone 2									
2016/08/15 ~ 2016/08/19	101.24	101.45	99.55	100.14	191p	陰線引け	-	-	-	-	-	-	97.40	98.47	99.31	100.38	101.22	102.29	103.12				97.74 ~ 98.47	99.20 ~ 99.43	100.38	101.33 ~ 101.56	102.29 ~ 103.02							
2016/08/22 ~ 2016/08/26	100.66	101.94	99.95	101.84	200p	陽線引け	101.94	99.55	103.09	100.69	102.89	100.90	98.55	99.25	100.55	101.24	102.54	103.24	104.54				98.49 ~ 99.25	100.01 ~ 100.25	101.24	102.24 ~ 102.48	103.24 ~ 104.00							
2016/08/29 ~ 2016/09/02	101.94	104.32	101.76	104.03	257p	陽線引け	104.32	101.76	105.46	102.89	105.46	102.89	99.85	100.80	102.42	103.37	104.98	105.93	107.55	101.66	Bull			99.82 ~ 100.80	101.78 ~ 102.09	103.37	104.65 ~ 104.95	105.93 ~ 106.91						
2016/09/05 ~ 2016/09/09	104.06	104.12	101.21	102.68	291p	陰線引け	104.12	101.21	103.40	100.49	103.40	100.49	98.31	99.76	101.22	102.67	104.13	105.58	107.04	102.43	Bull			98.65 ~ 99.76	100.87 ~ 101.21	102.67	104.13 ~ 104.47	105.58 ~ 106.69						

EUR/JPY										Demark										Pivot										Fibonacci Zone				
当日のOHLCLから計算される翌日の										TD Range Projection										TD pivot points														
日足	Open	High	Low	Close	値幅/日	引け形態	真の高値	真の安値	予想高値	予想安値	予想高値	予想安値	StopLoss	Support	Pivot	Resistance	StopLoss	3-days AVG	Support Zone 2	Support Zone 1	BP	Resistance Zone 1	Resistance Zone 2											
													LBOp	S2	S1	PP	R1	R2	HBOP															
2016/09/05	116.08	116.16	115.13	115.30	102p	陰線引け	-	-	-	-	-	-	113.88	114.51	114.90	115.53	115.93	116.55	116.95				114.12 ~ 114.51	114.90 ~ 115.02	115.53	116.04 ~ 116.16	116.55 ~ 116.94							
2016/09/06	115.30	115.68	114.71	114.85	97p	陰線引け	115.68	114.71	115.26	114.29	115.26	114.29	113.50	114.11	114.48	115.08	115.45	116.05	116.42				113.74 ~ 114.11	114.48 ~ 114.59	115.08	115.57 ~ 115.68	116.05 ~ 116.42							
2016/09/07	114.85	114.89	113.82	114.32	107p	陰線引け	114.89	113.82	114.61	113.54	114.61	113.54	112.73	113.27	113.80	114.35	114.87	115.42	115.94	114.98	Bear			112.86 ~ 113.27	113.68 ~ 113.81	114.35	114.88 ~ 115.01	115.42 ~ 115.83						
2016/09/08	114.33	115.44	114.14	115.34	130p	陽線引け	115.44	114.14	116.04	114.74	116.04	114.74	113.21	113.68	114.51	114.97	115.81	116.27	117.11	114.80	Bull			113.18 ~ 113.68	114.17 ~ 114.33	114.97	115.62 ~ 115.78	116.27 ~ 116.77						
2016/09/09	115.35	115.95	115.03	115.28	92p	陰線引け	115.95	115.03	115.61	114.69	115.61	114.69	113.96	114.50	114.89	115.42	115.81	116.34	116.73	114.91	Bull			114.14 ~ 114.50	114.85 ~ 114.96	115.42	115.88 ~ 115.99	116.34 ~ 116.69						
週足	Open	High	Low	Close	値幅/週	引け形態	真の高値	真の安値	予想高値	予想安値	予想高値	予想安値	LBOp	S2	S1	PP	R1	R2	HBOP	3-days AVG	Support Zone 2	Support Zone 1	BP	Resistance Zone 1	Resistance Zone 2									
2016/08/15 ~ 2016/08/19	113.08	113.93	112.37	113.44	155p	陽線引け	-	-	-	-	-	-	111.01	111.69	112.57	113.25	114.12	114.80	115.67				111.10 ~ 111.69	112.29 ~ 112.47	113.25	114.02 ~ 114.21	114.80 ~ 115.39							
2016/08/22 ~ 2016/08/26	113.94	114.13	112.80	114.01	133p	陽線引け	114.13	112.37	114.95	113.19	114.73	113.41	111.84	112.32	113.16	113.65	114.49	114.97	115.82				111.81 ~ 112.32	112.83 ~ 112.98	113.65	114.31 ~ 114.47	114.97 ~ 115.48							
2016/08/29 ~ 2016/09/02	114.03	116.37	113.86	116.06	251p	陽線引け	116.37	113.86	117.47	114.96	117.47	114.96	111.99	112.92	114.49	115.43	117.00	117.93	119.50	114.11	Bull			111.97 ~ 112.92	113.88 ~ 114.18	115.43	116.68 ~ 116.98	117.93 ~ 118.89						
2016/09/05 ~ 2016/09/09	116.08	116.16	113.82	115.28	233p	陰線引け	116.16	113.82	115.72	113.38	115.72	113.38	111.68	112.75	114.01	115.08	116.35	117.42	118.68	114.72	Bull			111.86 ~ 112.75	113.64 ~ 113.92	115.08	116.25 ~ 116.53	117.42 ~ 118.31						

EUR/USD										Demark										Pivot										Fibonacci Zone				
当日のOHLCLから計算される翌日の										TD Range Projection										TD pivot points														
日足	Open	High	Low	Close	値幅/日	引け形態	真の高値	真の安値	予想高値	予想安値	予想高値	予想安値	StopLoss	Support	Pivot	Resistance	StopLoss	3-days AVG	Support Zone 2	Support Zone 1	BP	Resistance Zone 1	Resistance Zone 2											
													LBOp	S2	S1	PP	R1	R2	HBOP															
2016/09/05	1.1155	1.1183	1.1140	1.1147	42p	陰線引け	-	-	-	-	-	-	1.1089	1.1114	1.1131	1.1157	1.1173	1.1199	1.1216				1.1098 ~ 1.1114	1.1131 ~ 1.1136	1.1157	1.1178 ~ 1.1183	1.1199 ~ 1.1215							
2016/09/06	1.1147	1.1263	1.1141	1.1249	122p	陽線引け	1.1263	1.1141	1.1317	1.1195	1.1317	1.1195	1.1050	1.1095	1.1172	1.1218	1.1294	1.1340	1.1417				1.1049 ~ 1.1095	1.1142 ~ 1.1156	1.1218	1.1279 ~ 1.1293	1.1340 ~ 1.1387							
2016/09/07	1.1249	1.1270	1.1230	1.1239	40p	陰線引け	1.1270	1.1230	1.1255	1.1214	1.1255	1.1214	1.1182	1.1206	1.1223	1.1246	1.1263	1.1287	1.1303	1.1207	Bull			1.1190 ~ 1.1206	1.1221 ~ 1.1226	1.1246	1.1266 ~ 1.1271	1.1287 ~ 1.1302						
2016/09/08	1.1239	1.1326	1.1235	1.1265	91p	陽線引け	1.1326	1.1235	1.1341	1.1250	1.1341	1.1250	1.1133	1.1184	1.1225	1.1275	1.1316	1.1367	1.1407	1.1246	Bull			1.1149 ~ 1.1184	1.1219 ~ 1.1230	1.1275	1.1321 ~ 1.1332	1.1367 ~ 1.1401						
2016/09/09	1.1265	1.1285	1.1199	1.1226	86p	陰線引け	1.1285	1.1199	1.1256	1.1170	1.1256	1.1170	1.1103	1.1151	1.1189	1.1237	1.1274	1.1322	1.1360	1.1253	Bull			1.1119 ~ 1.1151	1.1184 ~ 1.1194	1.1237	1.1280 ~ 1.1290	1.1322 ~ 1.1355						
週足	Open	High	Low	Close	値幅/週	引け形態	真の高値	真の安値	予想高値	予想安値	予想高値	予想安値	LBOp	S2	S1	PP	R1	R2	HBOP	3-days AVG	Support Zone 2	Support Zone 1	BP	Resistance Zone 1	Resistance Zone 2									
2016/08/15 ~ 2016/08/19	1.1169	1.1366	1.1154	1.1328	212p	陽線引け	-	-	-	-	-	-	1.0988	1.1071	1.1199	1.1283	1.1411	1.1495	1.1623				1.0990 ~ 1.1071	1.1152 ~ 1.1177	1.1283	1.1389 ~ 1.1414	1.1495 ~ 1.1576							
2016/08/22 ~ 2016/08/26	1.1318	1.1355	1.1181	1.1195	174p	陰線引け	1.1355	1.1181	1.1275	1.1074	1.1275	1.1101	1.0959	1.1070	1.1132	1.1244	1.1306	1.1417	1.1479				1.1004 ~ 1.1070	1.1136 ~ 1.1157	1.1244	1.1330 ~ 1.1351	1.1417 ~ 1.1483							
2016/08/29 ~ 2016/09/02	1.1186	1.1252	1.1124	1.1157	128p	陰線引け	1.1252	1.1124	1.1204	1.1076	1.1204	1.1076	1.0975	1.1049	1.1103	1.1178	1.1231	1.1306	1.1359	1.1235	Bear			1.1000 ~ 1.1049	1.1098 ~ 1.1113	1.1178	1.1242 ~ 1.1257	1.1306 ~ 1.1355						
2016/09/05 ~ 2016/09/09	1.1155	1.1326	1.1140	1.1226	186p	陽線引け	1.1326	1.1140	1.1369	1.1183	1.1369	1.1183	1.0950	1.1045	1.1136	1.1231	1.1322	1.1417	1.1508	1.1217	Bull			1.0974 ~ 1.1045	1.1116 ~ 1.1138	1.1231	1.1324 ~ 1.1346	1.1417 ~ 1.1488						

GBP/JPY										Demark										Pivot										Fibonacci Zone				
当日のOHLCLから計算される翌日の										TD Range Projection										TD pivot points														
日足	Open	High	Low	Close	値幅/日	引け形態	真の高値	真の安値	予想高値	予想安値	予想高値	予想安値	StopLoss	Support	Pivot	Resistance	StopLoss	3-days AVG	Support Zone 2	Support Zone 1	BP	Resistance Zone 1	Resistance Zone 2											
													LBOp	S2	S1	PP	R1	R2	HBOP															
2016/09/05	138.41	138.43	137.34	137.66	109p	陰線引け	-	-	-	-	-	-	136.10	136.72	137.19	137.81	138.28	138.90	139.37				136.30 ~ 136.72	137.14 ~ 137.27	137.81	138.36 ~ 138.48	138.90 ~ 139.32							
2016/09/06	137.65	138.32	136.88	137.07	144p	陰線引け	138.32	136.88	137.69	136.25	137.69	136.25	135.08	135.98	136.52	137.42	137.96	138.86	139.41				135.43 ~ 135.98	136.53 ~ 136.70	137.42	138.14 ~ 138.31	138.86 ~ 139.41							
2016/09/07	137.07	137.13	135.42	135.64	171p	陰線引け	137.13	135.42	136.39	134.68	136.39	134.68	133.29	134.35	135.00	136.06	136.71	137.																



# IMM扱い8通貨/ダウ/日経/金/オイル/主要クロス円の過去5日及び過去5週の4本値

AUDUSD 5					CADUSD 5					CHFUSD 5				
Date	Open	High	Low	Close	Date	Open	High	Low	Close	Date	Open	High	Low	Close
2016/09/09	0.7643	0.7657	0.7544	0.7548	2016/09/09	0.7735	0.7745	0.7661	0.7674	2016/09/09	1.0288	1.0298	1.0222	1.0250
2016/09/08	0.7676	0.7732	0.7637	0.7643	2016/09/08	0.7759	0.7781	0.7728	0.7735	2016/09/08	1.0313	1.0363	1.0270	1.0288
2016/09/07	0.7682	0.7698	0.7652	0.7675	2016/09/07	0.7783	0.7798	0.7744	0.7760	2016/09/07	1.0308	1.0341	1.0299	1.0313
2016/09/06	0.7585	0.7688	0.7583	0.7683	2016/09/06	0.7736	0.7796	0.7732	0.7783	2016/09/06	1.0205	1.0316	1.0193	1.0308
2016/09/05	0.7573	0.7606	0.7563	0.7584	2016/09/05	0.7698	0.7748	0.7695	0.7736	2016/09/05	1.0199	1.0233	1.0189	1.0205

CNYUSD 5					EURUSD 5					GBPUSD 5				
Date	Open	High	Low	Close	Date	Open	High	Low	Close	Date	Open	High	Low	Close
2016/09/09	0.1497	0.1498	0.1494	0.1495	2016/09/09	1.1265	1.1285	1.1199	1.1226	2016/09/09	1.3298	1.3336	1.3240	1.3272
2016/09/08	0.1499	0.1500	0.1498	0.1499	2016/09/08	1.1239	1.1326	1.1235	1.1265	2016/09/08	1.3335	1.3376	1.3285	1.3298
2016/09/07	0.1499	0.1500	0.1497	0.1499	2016/09/07	1.1249	1.1270	1.1230	1.1239	2016/09/07	1.3425	1.3430	1.3320	1.3335
2016/09/06	0.1494	0.1495	0.1493	0.1495	2016/09/06	1.1147	1.1263	1.1141	1.1249	2016/09/06	1.3308	1.3445	1.3297	1.3425
2016/09/05	0.1493	0.1496	0.1493	0.1495	2016/09/05	1.1155	1.1183	1.1140	1.1147	2016/09/05	1.3298	1.3376	1.3290	1.3309

JPYUSD 5					MXNUSD 5					NZDUSD 5				
Date	Open	High	Low	Close	Date	Open	High	Low	Close	Date	Open	High	Low	Close
2016/09/09	0.9766	0.9806	0.9704	0.9739	2016/09/09	0.0535	0.0536	0.0529	0.0531	2016/09/09	0.7402	0.7413	0.7315	0.7329
2016/09/08	0.9831	0.9860	0.9747	0.9766	2016/09/08	0.0545	0.0547	0.0535	0.0535	2016/09/08	0.7451	0.7482	0.7384	0.7403
2016/09/07	0.9795	0.9881	0.9792	0.9831	2016/09/07	0.0545	0.0547	0.0543	0.0543	2016/09/07	0.7411	0.7485	0.7398	0.7452
2016/09/06	0.9668	0.9810	0.9633	0.9795	2016/09/06	0.0540	0.0548	0.0538	0.0547	2016/09/06	0.7305	0.7422	0.7302	0.7412
2016/09/05	0.9610	0.9694	0.9604	0.9668	2016/09/05	0.0540	0.0541	0.0538	0.0539	2016/09/05	0.7289	0.7344	0.7287	0.7305

Nikkei 225 - Japonia (NIKKEI) 5					(ドル建て終値)		出来高	
Date	Open	High	Low	Close				
2016/09/09	16994.37	17029.78	16902.09	16965.76	165.99	0	1764698300	
2016/09/08	16984.00	17001.84	16836.65	16958.77	166.93	1112661248	1672422500	
2016/09/07	16937.38	17024.26	16903.20	17012.44	167.54	1324775296	1915842100	
2016/09/06	17035.03	17097.59	17022.64	17081.98	165.30	1082843520	1542674100	
2016/09/05	17131.52	17156.36	17009.21	17037.63	164.84	1274213632	1750103300	
週4本値	17131.52	17156.36	16836.65	16965.76	165.99			

XAUUSD 5					
Date	Open	High	Low	Close	Volume
2016/09/09	1337.88	1339.36	1328.01	1329.23	0
2016/09/08	1344.93	1349.16	1335.65	1338.01	0
2016/09/07	1348.31	1352.40	1342.67	1346.31	0
2016/09/06	1326.15	1352.31	1324.72	1348.99	0
2016/09/05	1324.30	1328.34	1321.74	1327.18	0
週4本値	1324.30	1352.40	1321.74	1329.23	

Dow Jones Industrial - USA (DJIA)					5営業日以内に休業日あり	
Date	Open	High	Low	Close	出来高	
2016/09/09	18404.17	18404.17	18085.45	18085.45	120672714	
2016/09/08	18486.69	18506.24	18446.69	18479.91	79063230	
2016/09/07	18527.71	18536.89	18474.77	18526.14	67569967	
2016/09/06	18493.40	18551.54	18450.32	18538.12	83711547	
2016/09/05	18466.01	18544.76	18439.10	18491.96	74352868	
週4本値	18466.01	18551.54	18085.45	18085.45	120672714	

Historical Data by **Stooq**  
 Historical Data by **MarketNewsline** (ダウと日経)  
 Arrangement by **FX勝てば官軍?**

Crude Light Oil 5						
Date	Open	High	Low	Close	Volume	
2016/09/09	47.29	47.36	45.58	45.72	0	
2016/09/08	46.08	47.73	45.82	47.33	0	
2016/09/07	44.86	46.17	44.58	46.16	730800	
2016/09/06	45.08	45.62	43.87	44.89	1471667	
2016/09/05	44.17	46.53	44.07	45.17	924280	
週4本値	44.17	47.73	43.87	45.72		

USDJPY 5					EURJPY 5					GBPJPY 5				
日付	始値	高値	安値	終値	日付	始値	高値	安値	終値	日付	始値	高値	安値	終値
2016/09/09	102.40	103.05	101.98	102.68	2016/09/09	115.35	115.95	115.03	115.28	2016/09/09	136.17	137.12	135.74	136.28
2016/09/08	101.72	102.60	101.42	102.39	2016/09/08	114.33	115.44	114.14	115.34	2016/09/08	135.64	136.44	135.02	136.17
2016/09/07	102.10	102.12	101.21	101.72	2016/09/07	114.85	114.89	113.82	114.32	2016/09/07	137.07	137.13	135.42	135.64
2016/09/06	103.43	103.81	101.94	102.10	2016/09/06	115.30	115.68	114.71	114.85	2016/09/06	137.65	138.32	136.88	137.07
2016/09/05	104.06	104.12	103.16	103.43	2016/09/05	116.08	116.16	115.13	115.30	2016/09/05	138.41	138.43	137.34	137.66

USDJPY Weekly 28					EURJPY Weekly 28					GBPJPY Weekly 28				
日付	始値	高値	安値	終値	日付	始値	高値	安値	終値	日付	始値	高値	安値	終値
2016/09/09	104.06	104.12	101.21	102.68	2016/09/09	116.08	116.16	113.82	115.28	2016/09/09	138.41	138.43	135.02	136.28
2016/09/02	101.94	104.32	101.76	104.03	2016/09/02	114.03	116.37	113.86	116.06	2016/09/02	133.70	138.83	133.36	138.31
2016/08/26	100.66	101.94	99.95	101.84	2016/08/26	113.94	114.13	112.80	114.01	2016/08/26	131.58	133.88	131.16	133.76
2016/08/19	101.24	101.45	99.55	100.14	2016/08/19	113.08	113.93	112.37	113.44	2016/08/19	130.83	132.22	129.26	131.03
2016/08/12	101.93	102.65	100.85	101.28	2016/08/12	113.01	114.03	112.71	113.04	2016/08/12	133.32	134.03	130.40	130.74

# 先週のIMM取り扱い対ドル8通貨チャート

※ 赤点線は週最高値/青天線は週最低安値、BB中心線はSMA21

2016/09/05 ~ 2016/09/09

Chart by OANDA Japan MetaTrader4

