

JAPANESE YEN - CHICAGO MERCANTILE EXCHANGE

Code-097741

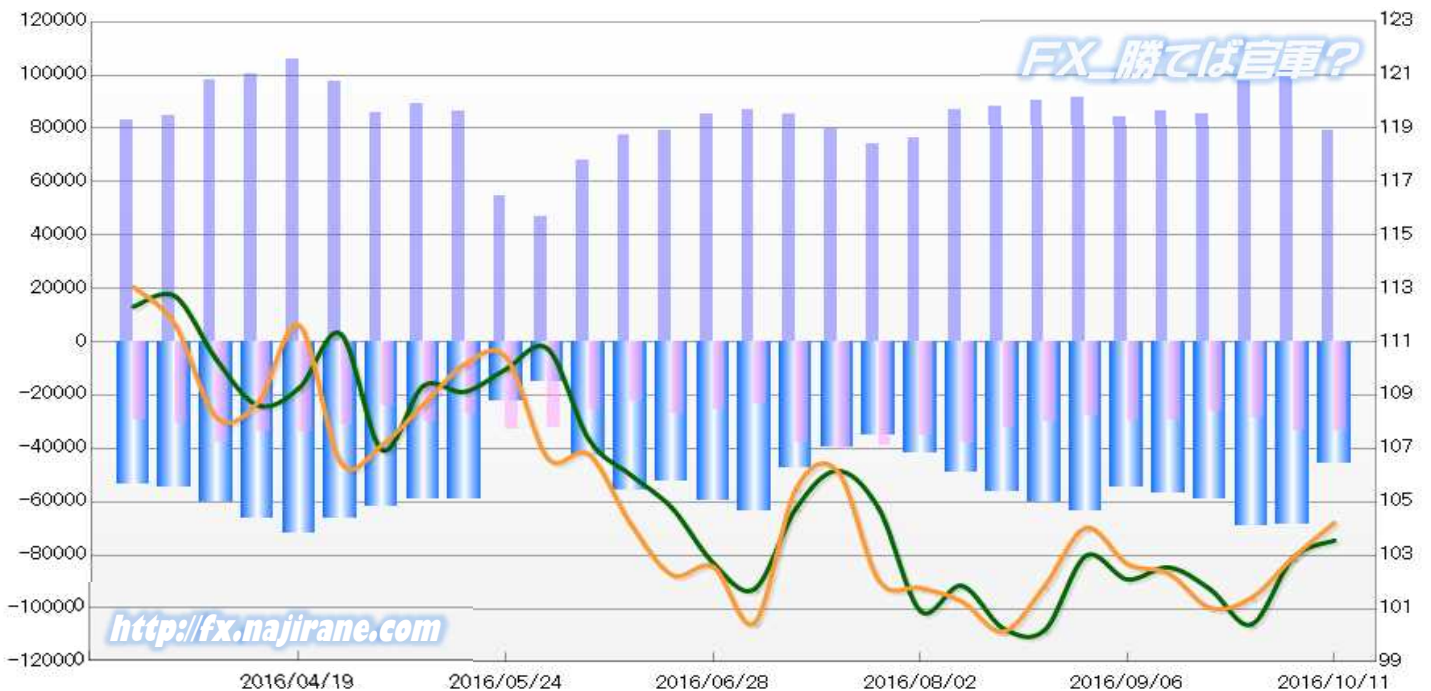
2016/04/19 ~ 2016/10/11

2016/10/14 NYクロース時公表値

Report_Date	Non Commercial Positions												火曜日 引け値	金曜日 引け値
	Long	増減	増減(%)	Short	増減	増減(%)	売り越し	増減	増減(%)	売買計	増減	増減(%)		
2016/10/11	79279	-22707	-22.3%	33370	79	0.2%	-45909	-22786	-33.2%	112649	-22628	-16.7%	103.56	104.22
2016/10/04	101986	4554	4.7%	33291	4751	16.6%	-68695	-197	-0.3%	135277	9305	7.4%	102.90	102.91
2016/09/27	97432	12315	14.5%	28540	2208	8.4%	-68892	10107	17.2%	125972	14523	13.0%	100.41	101.41
2016/09/20	85117	-1023	-1.2%	26332	-2962	-10.1%	-58785	1939	3.4%	111449	-3985	-3.5%	101.73	101.03
2016/09/13	86140	2172	2.6%	29294	-185	-0.6%	-56846	2357	4.3%	115434	1987	1.8%	102.55	102.32
2016/09/06	83968	-7602	-8.3%	29479	1570	5.6%	-54489	-9172	-14.4%	113447	-6032	-5.0%	102.10	102.68
2016/08/30	91570	1183	1.3%	27909	-2162	-7.2%	-63661	3345	5.5%	119479	-979	-0.8%	102.98	104.03
2016/08/23	90387	2114	2.4%	30071	-2196	-6.8%	-60316	4310	7.7%	120458	-82	-0.1%	100.19	101.84
2016/08/16	88273	1554	1.8%	32267	-5621	-14.8%	-56006	7175	14.7%	120540	-4067	-3.3%	100.27	100.14
2016/08/09	86719	10144	13.2%	37888	3013	8.6%	-48831	7131	17.1%	124607	13157	11.8%	101.86	101.28
2016/08/02	76575	2501	3.4%	34875	-4241	-10.8%	-41700	6742	19.3%	111450	-1740	-1.5%	100.92	101.78
2016/07/26	74074	-5790	-7.2%	39116	-1395	-3.4%	-34958	-4395	-11.2%	113190	-7185	-6.0%	104.74	102.05
2016/07/19	79864	-5500	-6.4%	40511	2692	7.1%	-39353	-8192	-17.2%	120375	-2808	-2.3%	106.17	106.16
2016/07/12	85364	-1673	-1.9%	37819	14350	61.1%	-47545	-16023	-25.2%	123183	12677	11.5%	104.76	105.49
2016/07/05	87037	1544	1.8%	23469	-2274	-8.8%	-63568	3818	6.4%	110506	-730	-0.7%	101.74	100.47
2016/06/28	85493	6095	7.7%	25743	-1359	-5.0%	-59750	7454	14.3%	111236	4736	4.4%	102.71	102.57
2016/06/21	79398	1695	2.2%	27102	5089	23.1%	-52296	-3394	-6.1%	106500	6784	6.8%	104.78	102.27
2016/06/14	77703	9466	13.9%	22013	-3371	-13.3%	-55690	12837	30.0%	99716	6095	6.5%	106.02	104.19
2016/06/07	68237	21273	45.3%	25384	-6743	-21.0%	-42853	28016	188.8%	93621	14530	18.4%	107.33	106.78
2016/05/31	46964	-7828	-14.3%	32127	-606	-1.9%	-14837	-7222	-32.7%	79091	-8434	-9.6%	110.74	106.64
2016/05/24	54792	-31373	-36.4%	32733	5487	20.1%	-22059	-36860	-62.6%	87525	-25886	-22.8%	109.98	110.42
2016/05/17	86165	-2732	-3.1%	27246	-2604	-8.7%	-58919	-128	-0.2%	113411	-5336	-4.5%	109.13	110.16
2016/05/10	88897	3270	3.8%	29850	5744	23.8%	-59047	-2474	-4.0%	118747	9014	8.2%	109.35	108.65
2016/05/03	85627	-11843	-12.2%	24106	-6866	-22.2%	-61521	-4977	-7.5%	109733	-18709	-14.6%	106.95	107.14
2016/04/26	97470	-8240	-7.8%	30972	-2868	-8.5%	-66498	-5372	-7.5%	128442	-11108	-8.0%	111.30	106.48
2016/04/19	105710			33840			-71870			139550			109.27	111.62

JAPANESE YEN - CHICAGO MERCANTILE EXCHANGE  
FUTURES ONLY POSITIONS

— 金曜終値 — 火曜終値 Short枚数 Long枚数 売り越し枚数(マイナスの場合は買越しと読替え)



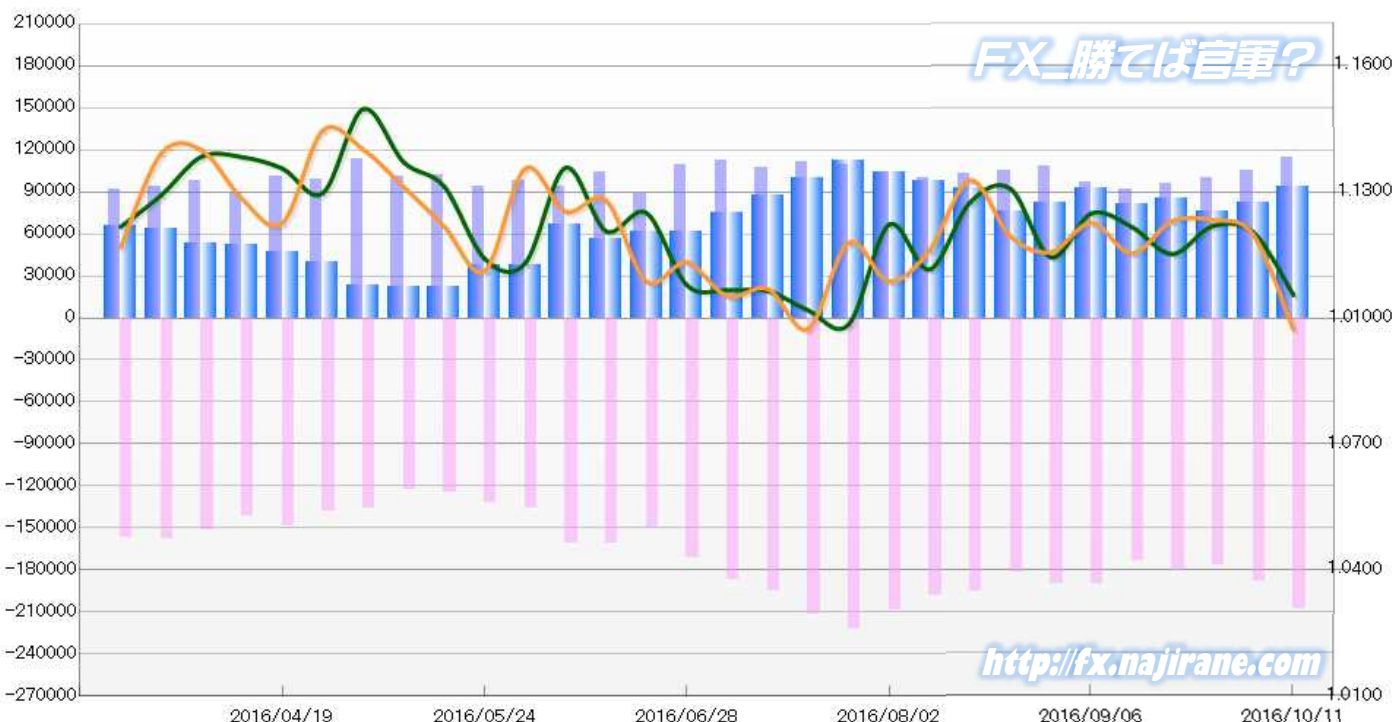
**EURO FX - CHICAGO MERCANTILE EXCHANGE**  
**2016/04/19 ~ 2016/10/11**

Code-099741  
**2016/10/14 NYクローズ時公表値**

Report_Date	Non Commercial Positions												火曜日 引け値	金曜日 引け値
	Long	増減		Short	増減		売り越し	増減		売買計	増減			
2016/10/11	114284	8650	8.2%	207756	20063	10.7%	93472	11413	13.9%	322040	28713	9.8%	1.1054	1.0972
2016/10/04	105634	5142	5.1%	187693	11171	6.3%	82059	6029	7.9%	293327	16313	5.9%	1.1204	1.1199
2016/09/27	100492	4794	5.0%	176522	-4201	-2.3%	76030	-8995	-10.6%	277014	593	0.2%	1.1219	1.1233
2016/09/20	95698	3915	4.3%	180723	7465	4.3%	85025	3550	4.4%	276421	11380	4.3%	1.1152	1.1230
2016/09/13	91783	-5541	-5.7%	173258	-16696	-8.8%	81475	-11155	-12.0%	265041	-22237	-7.7%	1.1217	1.1154
2016/09/06	97324	-10937	-10.1%	189954	-232	-0.1%	92630	10705	13.1%	287278	-11169	-3.7%	1.1249	1.1226
2016/08/30	108261	2887	2.7%	190186	8154	4.5%	81925	5267	6.9%	298447	11041	3.8%	1.1144	1.1157
2016/08/23	105374	2314	2.2%	182032	-13536	-6.9%	76658	-15850	-17.1%	287406	-11222	-3.8%	1.1308	1.1195
2016/08/16	103060	2618	2.6%	195568	-3273	-1.6%	92508	-5891	-6.0%	298628	-655	-0.2%	1.1275	1.1328
2016/08/09	100442	-4074	-3.9%	198841	-9778	-4.7%	98399	-5704	-5.5%	299283	-13852	-4.4%	1.1115	1.1161
2016/08/02	104516	-4677	-4.3%	208619	-13174	-5.9%	104103	-8497	-7.5%	313135	-17851	-5.4%	1.1222	1.1087
2016/07/26	109193	-2385	-2.1%	221793	10324	4.9%	112600	12709	12.7%	330986	7939	2.5%	1.0985	1.1179
2016/07/19	111578	3943	3.7%	211469	16174	8.3%	99891	12231	14.0%	323047	20117	6.6%	1.1018	1.0974
2016/07/12	107635	-4376	-3.9%	195295	7957	4.2%	87660	12333	16.4%	302930	3581	1.2%	1.1065	1.1069
2016/07/05	112011	2431	2.2%	187338	15824	9.2%	75327	13393	21.6%	299349	18255	6.5%	1.1066	1.1052
2016/06/28	109580	20941	23.6%	171514	21529	14.4%	61934	588	1.0%	281094	42470	17.8%	1.1078	1.1132
2016/06/21	88639	-15871	-15.2%	149985	-11014	-6.8%	61346	4857	8.6%	238624	-26885	-10.1%	1.1250	1.1087
2016/06/14	104510	11018	11.8%	160999	395	0.2%	56489	-10623	-15.8%	265509	11413	4.5%	1.1207	1.1280
2016/06/07	93492	-4726	-4.8%	160604	24732	18.2%	67112	29458	78.2%	254096	20006	8.5%	1.1357	1.1253
2016/05/31	98218	4263	4.5%	135872	4022	3.1%	37654	-241	-0.6%	234090	8285	3.7%	1.1130	1.1356
2016/05/24	93955	-7768	-7.6%	131850	7540	6.1%	37895	15308	67.8%	225805	-228	-0.1%	1.1141	1.1111
2016/05/17	101723	446	0.4%	124310	1161	0.9%	22587	715	3.3%	226033	1607	0.7%	1.1313	1.1218
2016/05/10	101277	-11757	-10.4%	123149	-13504	-9.9%	21872	-1747	-7.4%	224426	-25261	-10.1%	1.1371	1.1312
2016/05/03	113034	13962	14.1%	136653	-2086	-1.5%	23619	-16048	-40.5%	249687	11876	5.0%	1.1497	1.1401
2016/04/26	99072	-2139	-2.1%	138739	-9389	-6.3%	39667	-7250	-15.5%	237811	-11528	-4.6%	1.1297	1.1446
2016/04/19	101211			148128			46917			249339			1.1356	1.1225

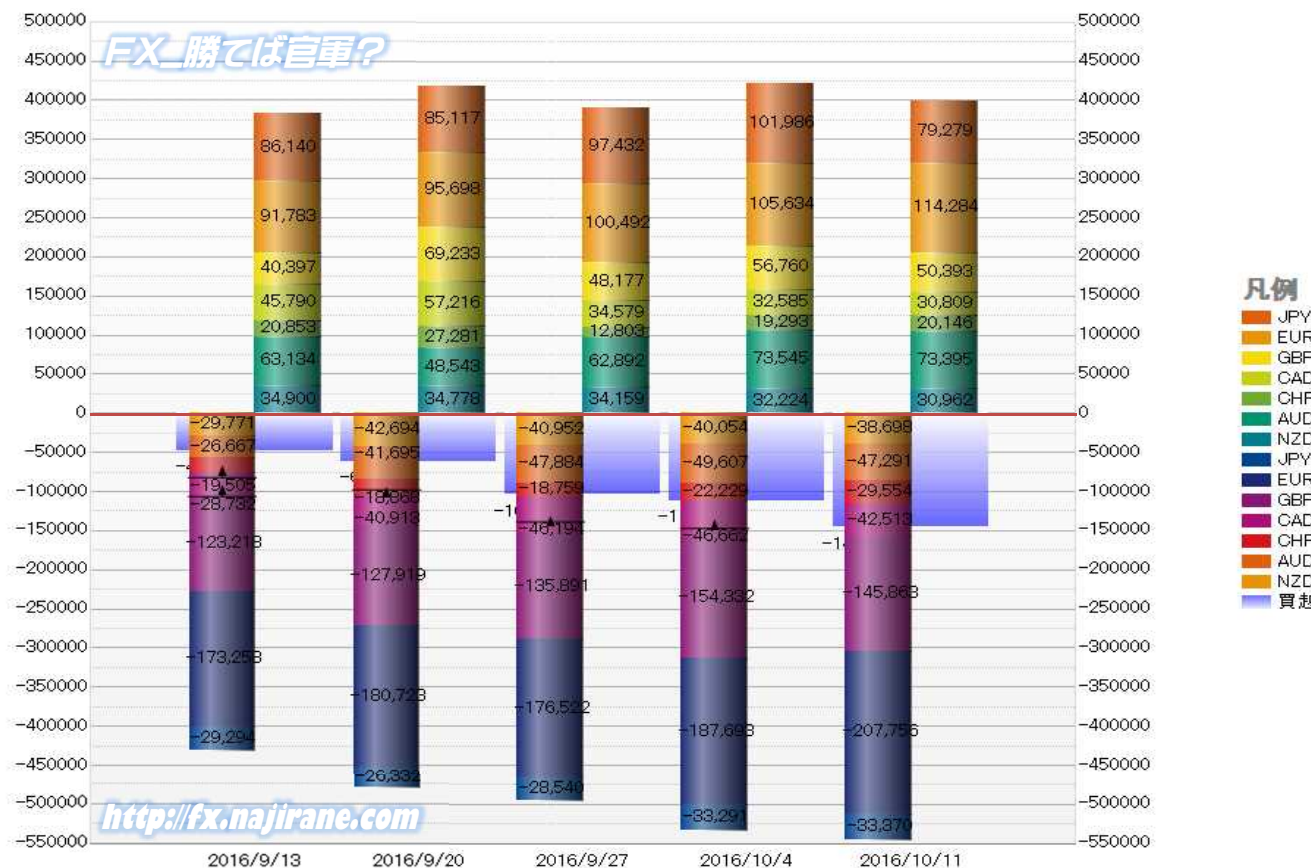
**EURO FX - CHICAGO MERCANTILE EXCHANGE**  
**FUTURES ONLY POSITIONS**

— 金曜締め週終値 — 火曜締め週終値 — Short枚数 — Long枚数 — 売り越し枚数(マイナスの場合は買越しと読替え)



	2016/09/13			2016/09/20			2016/09/27			2016/10/04			2016/10/11		
	Long	Short	売り越し	Long	Short	売り越し	Long	Short	売り越し	Long	Short	売り越し	Long	Short	売り越し
JPY	86140	29294	-56846	85117	26332	-58785	97432	28540	-68892	101986	33291	-68695	79279	33370	-45909
	前週比 枚数増減 (枚)			-1023	-2962	1939	12315	2208	10107	4554	4751	-197	-22707	79	-22786
	前週比 枚数増減 (%)			-1.19%	-10.11%	3.41%	14.47%	8.39%	17.19%	4.67%	16.65%	-0.29%	-22.26%	0.24%	-33.17%
EUR	91783	173258	81475	95698	180723	85025	100492	176522	76030	105634	187693	82059	114284	207756	93472
	前週比 枚数増減 (枚)			3915	7465	3550	4794	-4201	-8995	5142	11171	6029	8650	20063	11413
	前週比 枚数増減 (%)			4.27%	4.31%	4.36%	5.01%	-2.32%	-10.58%	5.12%	6.33%	7.93%	8.19%	10.69%	13.91%
GBP	40397	123218	82821	69233	127919	58686	48177	135891	87714	56760	154332	97572	50393	145863	95470
	前週比 枚数増減 (枚)			28836	4701	-24135	-21056	7972	29028	8583	18441	9858	-6367	-8469	-2102
	前週比 枚数増減 (%)			71.38%	3.82%	-29.14%	-30.41%	6.23%	49.46%	17.82%	13.57%	11.24%	-11.22%	-5.49%	-2.15%
AUD	63134	26667	-36467	48543	41695	-6848	62892	47884	-15008	73545	49607	-23938	73395	47291	-26104
	前週比 枚数増減 (枚)			-14591	15028	-29619	14349	6189	8160	10653	1723	8930	-150	-2316	2166
	前週比 枚数増減 (%)			-23.11%	56.35%	-81.22%	29.56%	14.84%	119.16%	16.94%	3.60%	59.50%	-0.20%	-4.67%	9.05%
CAD	45790	28732	-17058	57216	40913	-16303	34579	46194	11615	32585	46662	14077	30809	42513	11704
	前週比 枚数増減 (枚)			11426	12181	-755	-22637	5281	-4688	-1994	468	2462	-1776	-4149	-2373
	前週比 枚数増減 (%)			24.95%	42.40%	-4.43%	-39.56%	12.91%	-171.24%	-5.77%	1.01%	21.20%	-5.45%	-8.89%	-16.86%
CHF	20853	19505	-1348	27281	18868	-8413	12803	18759	5956	19293	22229	2936	20146	29554	9408
	前週比 枚数増減 (枚)			6428	-637	7065	-14478	-109	-2457	6490	3470	-3020	853	7325	6472
	前週比 枚数増減 (%)			30.83%	-3.27%	524.11%	-53.07%	-0.58%	-170.80%	50.69%	18.50%	-50.71%	4.42%	32.95%	220.44%
NZD	34900	29771	-5129	34778	42694	7916	34159	40952	6793	32224	40054	7830	30962	38698	7736
	前週比 枚数増減 (枚)			-122	12923	2787	-619	-1742	-1123	-1935	-898	1037	-1262	-1356	-94
	前週比 枚数増減 (%)			-0.35%	43.41%	254.34%	-1.78%	-4.08%	-14.19%	-5.66%	-2.19%	15.27%	-3.92%	-3.39%	-1.20%
MXN	19930	85677	65747	20526	109868	89342	24865	110738	85873	22358	108250	85892	38060	89852	51792
	前週比 枚数増減 (枚)			596	24191	23595	4339	870	-3469	-2507	-2488	19	15702	-18398	-34100
	前週比 枚数増減 (%)			2.99%	28.24%	35.89%	21.14%	0.79%	-3.88%	-10.08%	-2.25%	0.02%	70.23%	-17.00%	-39.70%
Total All 8	402927	516122	113195	438392	589012	150620	415399	605480	190081	444385	642118	197733	437328	634897	197569
	前週比 枚数増減 (枚)			35465	72890	37425	-22993	16468	39461	28986	36638	7652	-7057	-7221	-164
	前週比 枚数増減 (%)			8.80%	14.12%	33.06%	-5.24%	2.80%	26.20%	6.98%	6.05%	4.03%	-1.59%	-1.12%	-0.08%
Total 7 (MXN除く)	382997	430445	47448	417866	479144	61278	390534	494742	104208	422027	533868	111841	399268	545045	145777
	前週比 枚数増減 (枚)			34869	48699	13830	-27332	15598	42930	31493	39126	7633	-22759	11177	33936
	前週比 枚数増減 (%)			9.1%	11.3%	29.1%	-6.5%	3.3%	70.1%	8.1%	7.9%	7.3%	-5.4%	2.1%	30.3%

### 直近5週 CFTC IMM主要7通貨の構成

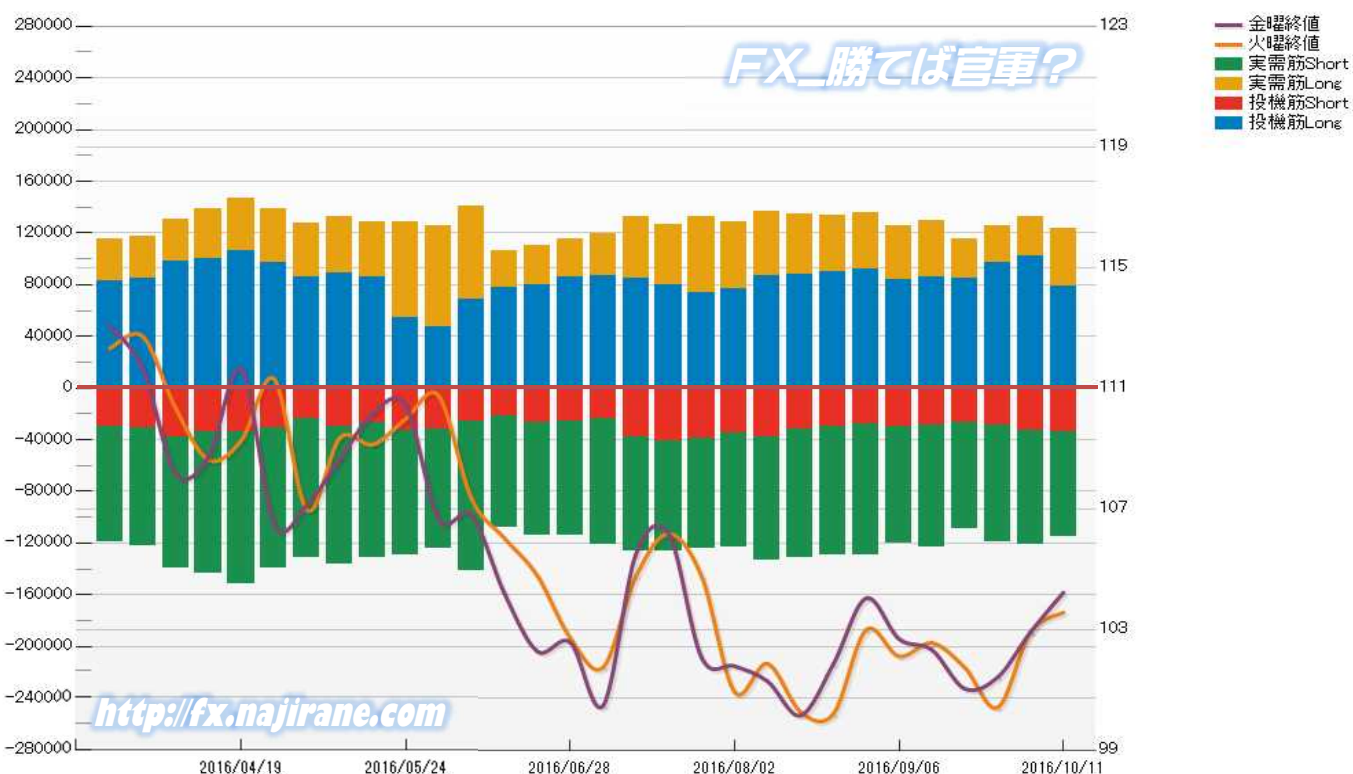


JAPANESE YEN - CHICAGO MERCANTILE EXCHANGE  
FUTURES ONLY POSITIONS

Code-097741  
2016/10/14 公表値

Date	投機筋集計				実需筋集計				投機筋+実需筋合計				ドル円終値	
	円買い	円売り	売り越し	売買計	円買い	円売り	売り越し	売買計	円買い	円売り	売り越し	売買計	火曜締め	金曜締め
2016/10/11	79279	33370	-45909	112649	43806	81544	37738	125350	123085	114914	-8171	237999	103.56	104.22
2016/10/04	101986	33291	-68695	135277	30627	87820	57193	118447	132613	121111	-11502	253724	102.90	102.91
2016/09/27	97432	28540	-68892	125972	28326	90589	62263	118915	125758	119129	-6629	244887	100.41	101.41
2016/09/20	85117	26332	-58785	111449	29715	83021	53306	112736	114832	109353	-5479	224185	101.73	101.03
2016/09/13	86140	29294	-56846	115434	43492	93700	50208	137192	129632	122994	-6638	252626	102.55	102.32
2016/09/06	83968	29479	-54489	113447	41120	91024	49904	132144	125088	120503	-4585	245591	102.10	102.68
2016/08/30	91570	27909	-63661	119479	44366	101570	57204	145936	135936	129479	-6457	265415	102.98	104.03
2016/08/23	90387	30071	-60316	120458	43245	99482	56237	142727	133632	129553	-4079	263185	100.19	101.84
2016/08/16	88273	32267	-56006	120540	46280	99196	52916	145476	134553	131463	-3090	266016	100.27	100.14
2016/08/09	86719	37888	-48831	124607	49619	95343	45724	144962	136338	133231	-3107	269569	101.86	101.28
2016/08/02	76575	34875	-41700	111450	51707	88074	36367	139781	128282	122949	-5333	251231	100.92	101.78
2016/07/26	74074	39116	-34958	113190	58947	85458	26511	144405	133021	124574	-8447	257595	104.74	102.05
2016/07/19	79864	40511	-39353	120375	46993	85719	38726	132712	126857	126230	-627	253087	106.17	106.16
2016/07/12	85364	37819	-47545	123183	46842	88850	42008	135692	132206	126669	-5537	258875	104.76	105.49
2016/07/05	87037	23469	-63568	110506	32637	97652	65015	130289	119674	121121	1447	240795	101.74	100.47
2016/06/28	85493	25743	-59750	111236	30249	88316	58067	118565	115742	114059	-1683	229801	102.71	102.57
2016/06/21	79398	27102	-52296	106500	30450	86992	56542	117442	109848	114094	4246	223942	104.78	102.27
2016/06/14	77703	22013	-55690	99716	28678	86062	57384	114740	106381	108075	1694	214456	106.02	104.19
2016/06/07	68237	25384	-42853	93621	72616	116477	43861	189093	140853	141861	1008	282714	107.33	106.78
2016/05/31	46964	32127	-14837	79091	78749	92275	13526	171024	125713	124402	-1311	250115	110.74	106.64
2016/05/24	54792	32733	-22059	87525	73603	96638	23035	170241	128395	129371	976	257766	109.98	110.42
2016/05/17	86165	27246	-58919	113411	41969	104408	62439	146377	128134	131654	3520	259788	109.13	110.16
2016/05/10	88897	29850	-59047	118747	43309	106603	63294	149912	132206	136453	4247	268659	109.35	108.65
2016/05/03	85627	24106	-61521	109733	41904	107399	65495	149303	127531	131505	3974	259036	106.95	107.14
2016/04/26	97470	30972	-66498	128442	40734	108419	67685	149153	138204	139391	1187	277595	111.30	106.48
2016/04/19	105710	33840	-71870	139550	41258	118087	76829	159345	146968	151927	4959	298895	109.27	111.62
2016/04/12	100120	33930	-66190	134050	38652	109410	70758	148062	138772	143340	4568	282112	108.62	108.73
2016/04/05	98130	38057	-60073	136187	32451	101508	69057	133959	130581	139565	8984	270146	110.34	108.17
2016/03/29	84870	30483	-54387	115353	32118	92081	59963	124199	116988	122564	5576	239552	112.71	111.65
2016/03/22	82812	29466	-53346	112278	32265	89776	57511	122041	115077	119242	4165	234319	112.32	113.06

JAPANESE YEN - CHICAGO MERCANTILE EXCHANGE  
FUTURES ONLY POSITIONS Code-097741

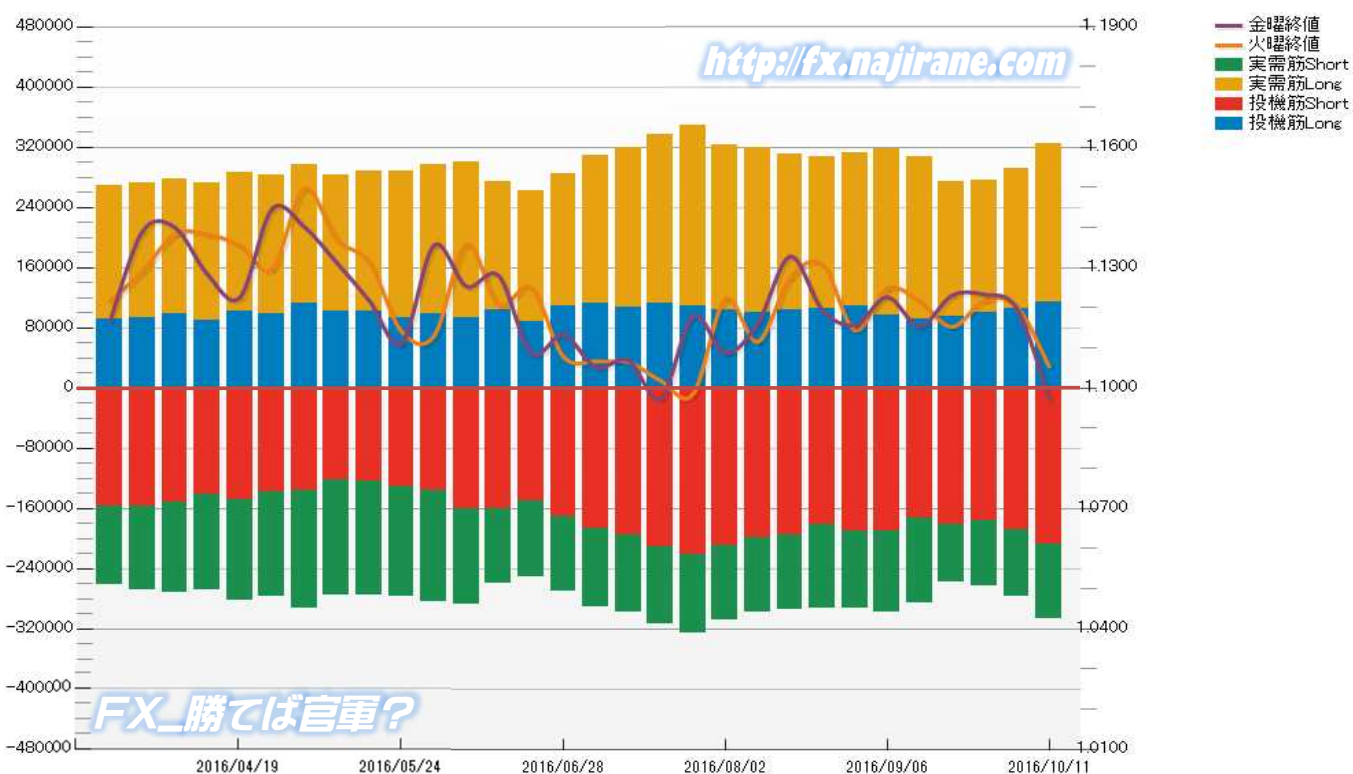


**EURO FX - CHICAGO MERCANTILE EXCHANGE  
FUTURES ONLY POSITIONS**

**Code-099741  
2016/10/14 公表値**

Date	投機筋集計				実需筋集計				投機筋+実需筋合計				ユーロドル終値	
	EUR買い	EUR売り	売り越し	売買計	EUR買い	EUR売り	売り越し	売買計	EUR買い	EUR売り	売り越し	売買計	火曜締め	金曜締め
2016/10/11	114284	207756	93472	322040	209879	99131	-110748	309010	324163	306887	-17276	631050	1.1054	1.0972
2016/10/04	105634	187693	82059	293327	186827	89483	-97344	276310	292461	277176	-15285	569637	1.1204	1.1199
2016/09/27	100492	176522	76030	277014	174828	86986	-87842	261814	275320	263508	-11812	538828	1.1219	1.1233
2016/09/20	95698	180723	85025	276421	177910	77967	-99943	255877	273608	258690	-14918	532298	1.1152	1.1230
2016/09/13	91783	173258	81475	265041	216048	112825	-103223	328873	307831	286083	-21748	593914	1.1217	1.1154
2016/09/06	97324	189954	92630	287278	220781	107441	-113340	328222	318105	297395	-20710	615500	1.1249	1.1226
2016/08/30	108261	190186	81925	298447	204241	103433	-100808	307674	312502	293619	-18883	606121	1.1144	1.1157
2016/08/23	105374	182032	76658	287406	202180	111006	-91174	313186	307554	293038	-14516	600592	1.1308	1.1195
2016/08/16	103060	195568	92508	298628	208203	99798	-108405	308001	311263	295366	-15897	606629	1.1275	1.1328
2016/08/09	100442	198841	98399	299283	218984	99470	-119514	318454	319426	298311	-21115	617737	1.1115	1.1161
2016/08/02	104516	208619	104103	313135	218778	99452	-119326	318230	323294	308071	-15223	631365	1.1222	1.1087
2016/07/26	109193	221793	112600	330986	239073	103338	-135735	342411	348266	325131	-23135	673397	1.0985	1.1179
2016/07/19	111578	211469	99891	323047	225909	101654	-124255	327563	337487	313123	-24364	650610	1.1018	1.0974
2016/07/12	107635	195295	87660	302930	211520	103371	-108149	314891	319155	298666	-20489	617821	1.1065	1.1069
2016/07/05	112011	187338	75327	299349	197845	104095	-93750	301940	309856	291433	-18423	601289	1.1066	1.1052
2016/06/28	109580	171514	61934	281094	175747	99094	-76653	274841	285327	270608	-14719	555935	1.1078	1.1132
2016/06/21	88639	149985	61346	238624	174231	100833	-73398	275064	262870	250818	-12052	513688	1.1250	1.1087
2016/06/14	104510	160999	56489	265509	168953	98248	-70705	267201	273463	259247	-14216	532710	1.1207	1.1280
2016/06/07	93492	160604	67112	254096	207448	127910	-79538	335358	300940	288514	-12426	589454	1.1357	1.1253
2016/05/31	98218	135872	37654	234090	198726	148012	-50714	346738	296944	283884	-13060	580828	1.1130	1.1356
2016/05/24	93955	131850	37895	225805	193758	145257	-48501	339015	287713	277107	-10606	564820	1.1141	1.1111
2016/05/17	101723	124310	22587	226033	186065	151949	-34116	338014	287788	276259	-11529	564047	1.1313	1.1218
2016/05/10	101277	123149	21872	224426	181863	152379	-29484	334242	283140	275528	-7612	558668	1.1371	1.1312
2016/05/03	113034	136653	23619	249687	184524	156966	-27558	341490	297558	293619	-3939	591177	1.1497	1.1401
2016/04/26	99072	138739	39667	237811	182996	138270	-44726	321266	282068	277009	-5059	559077	1.1297	1.1446
2016/04/19	101211	148128	46917	249339	185459	133519	-51940	318978	286670	281647	-5023	568317	1.1356	1.1225
2016/04/12	89216	141267	52051	230483	182596	126793	-55803	309389	271812	268060	-3752	539872	1.1383	1.1284
2016/04/05	98014	151501	53487	249515	180268	120531	-59737	300799	278282	272032	-6250	550314	1.1384	1.1400
2016/03/29	93726	157537	63811	251263	178491	111140	-67351	289631	272217	268677	-3540	540894	1.1292	1.1391
2016/03/22	91334	157387	66053	248721	176950	103926	-73024	280876	268284	261313	-6971	529597	1.1217	1.1168

**EURO FX - CHICAGO MERCANTILE EXCHANGE  
FUTURES ONLY POSITIONS Code-099741**



# CME Daily Volume

シカゴ・マーカントイル取引所 取扱高日次データ

FX\_勝てば官軍?

<http://fx.najirane.com>

EU Euro		取扱高			当日含む前5営業日計			参考レート	
Date	CALL	PUT	FUTURE	CALL	PUT	FUTURE	Open	Close	
2016/10/13 (木)	9142	7047	185429	51640	72450	896497	1.1009	1.1055	
2016/10/12 (水)	12124	13113	190787	53905	86939	872192	1.1054	1.1009	
2016/10/11 (火)	11830	19825	185973	45714	79452	831314	1.1139	1.1054	
2016/10/10 (月)	3732	4635	89030	46565	76532	903064	1.1191	1.1138	
2016/10/7 (金)	14812	27830	245278	48073	76582	921360	1.1148	1.1199	
2016/10/6 (木)	11407	21536	161124	47327	68164	930777	1.1207	1.1148	
2016/10/5 (水)	3933	5626	149909	47304	70765	926210	1.1204	1.1208	
2016/10/4 (火)	12681	16905	257723	48915	70182	929746	1.1212	1.1204	
2016/10/3 (月)	5240	4685	107326	45865	61979	838203	1.1241	1.1211	
2016/9/30 (金)	14066	19412	254695	51596	63429	853795	1.1220	1.1233	

AUS Dollar		取扱高			当日含む前5営業日計			参考レート	
Date	CALL	PUT	FUTURE	CALL	PUT	FUTURE	Open	Close	
2016/10/13 (木)	1688	1984	111122	8952	12966	472458	0.7566	0.7566	
2016/10/12 (水)	1555	4820	93697	9094	14624	451939	0.7536	0.7566	
2016/10/11 (火)	3373	2756	94101	9487	13960	457536	0.7608	0.7536	
2016/10/10 (月)	616	791	57670	8473	16968	464804	0.7595	0.7607	
2016/10/7 (金)	1720	2615	115868	9156	17725	469758	0.7583	0.7588	
2016/10/6 (木)	1830	3642	90603	8813	17525	453329	0.7613	0.7584	
2016/10/5 (水)	1948	4156	99294	10491	20214	455300	0.7613	0.7613	
2016/10/4 (火)	2359	5764	101369	10061	22092	433194	0.7679	0.7613	
2016/10/3 (月)	1299	1548	62624	9171	19335	424241	0.7661	0.7677	
2016/9/30 (金)	1377	2415	99439	8576	18934	419860	0.7633	0.7655	

CHE Franc		取扱高			当日含む前5営業日計			参考レート	
Date	CALL	PUT	FUTURE	CALL	PUT	FUTURE	Open	Close	
2016/10/13 (木)	77	0	65	330	0	679	1.0095	1.0138	
2016/10/12 (水)	1	0	15	291	0	649	1.0117	1.0096	
2016/10/11 (火)	25	0	270	291	0	656	1.0176	1.0116	
2016/10/10 (月)	214	0	292	322	0	429	1.0224	1.0175	
2016/10/7 (金)	13	0	37	332	0	172	1.0195	1.0232	
2016/10/6 (木)	38	0	35	345	0	269	1.0262	1.0194	
2016/10/5 (水)	1	0	22	449	0	360	1.0215	1.0262	
2016/10/4 (火)	56	0	43	478	0	531	1.0272	1.0214	
2016/10/3 (月)	224	0	35	442	0	513	1.0305	1.0272	
2016/9/30 (金)	26	0	134	526	0	480	1.0354	1.0294	

JPN Yen		取扱高			当日含む前5営業日計			参考レート	
Date	CALL	PUT	FUTURE	CALL	PUT	FUTURE	Open	Close	
2016/10/13 (木)	5091	6075	135059	21510	29448	614516	104.24	103.66	
2016/10/12 (水)	3495	6346	116988	26753	35754	594678	103.56	104.23	
2016/10/11 (火)	3957	3485	122311	28375	36420	608957	103.64	103.56	
2016/10/10 (月)	1025	2718	66718	32537	47655	644144	103.13	103.65	
2016/10/7 (金)	7942	10824	173440	36489	47264	660575	103.99	102.91	
2016/10/6 (木)	10334	12381	115221	32558	43403	632020	103.53	103.99	
2016/10/5 (水)	5117	7012	131267	28980	37796	669195	102.90	103.53	
2016/10/4 (火)	8119	14720	157498	25775	34662	631383	101.64	102.90	
2016/10/3 (月)	4977	2327	83149	23014	24881	602983	101.33	101.64	
2016/9/30 (金)	4011	6963	144885	21772	28428	613951	101.10	101.41	

CAN Dollar		取扱高			当日含む前5営業日計			参考レート	
Date	CALL	PUT	FUTURE	CALL	PUT	FUTURE	Open	Close	
2016/10/13 (木)	3353	820	71016	12837	10886	373271	0.7536	0.7579	
2016/10/12 (水)	2293	1864	64944	11916	12728	365324	0.7544	0.7536	
2016/10/11 (火)	1124	1259	68749	11024	12329	361292	0.7595	0.7544	
2016/10/10 (月)	1308	1517	62244	12555	13861	350577	0.7541	0.7596	
2016/10/7 (金)	4759	5426	106318	12124	13881	342290	0.7567	0.7530	
2016/10/6 (木)	2432	2662	63069	9182	11228	307599	0.7585	0.7566	
2016/10/5 (水)	1401	1465	60912	8471	11225	331303	0.7582	0.7585	
2016/10/4 (火)	2655	2791	58034	10475	12778	355880	0.7624	0.7582	
2016/10/3 (月)	877	1537	53957	10156	12300	376263	0.7623	0.7623	
2016/9/30 (金)	1817	2773	71627	11575	13782	382707	0.7605	0.7623	

NZL Dollar		取扱高			当日含む前5営業日計			参考レート	
Date	CALL	PUT	FUTURE	CALL	PUT	FUTURE	Open	Close	
2016/10/13 (木)	0	0	22921	0	0	123493	0.7049	0.7088	
2016/10/12 (水)	0	0	27991	0	0	118298	0.7055	0.7048	
2016/10/11 (火)	0	0	12577	0	0	124162	0.7142	0.7055	
2016/10/10 (月)	0	0	31928	0	0	127778	0.7161	0.7142	
2016/10/7 (金)	0	0	22881	0	0	132398	0.7166	0.7160	
2016/10/6 (木)	0	0	28785	0	0	120982	0.7168	0.7167	
2016/10/5 (水)	0	0	31607	0	0	121520	0.7188	0.7168	
2016/10/4 (火)	0	0	17197	0	0	116997	0.7277	0.7188	
2016/10/3 (月)	0	0	20512	0	0	109002	0.7287	0.7276	
2016/9/30 (金)	0	0	23419	0	0	109488	0.7255	0.7282	

MEX Peso		取扱高			当日含む前5営業日計			参考レート	
Date	CALL	PUT	FUTURE	CALL	PUT	FUTURE	Open	Close	
2016/10/13 (木)	37	42	45747	763	545	254572	5.2650	5.2764	
2016/10/12 (水)	0	9	37218	885	536	250182	5.2865	5.2844	
2016/10/11 (火)	263	63	43823	959	639	271411	5.2837	5.2882	
2016/10/10 (月)	353	377	58963	784	611	278931	5.2791	5.2855	
2016/10/7 (金)	110	54	68821	501	351	253982	5.1694	5.1917	
2016/10/6 (木)	159	33	41357	1671	453	231733	5.1933	5.1937	
2016/10/5 (水)	74	112	58447	1570	489	253533	5.1647	5.1995	
2016/10/4 (火)	88	35	51343	1537	440	256653	5.1569	5.1775	
2016/10/3 (月)	70	117	34014	1620	954	284653	5.1959	5.1847	
2016/9/30 (金)	1280	156	46572	1818	948	290713	5.1117	5.1599	

過去5日及び過去4週の4本値と各種ピボット

2016/10/10 ~ 2016/10/14

Table with columns: USD/JPY, Demark, Pivot, StopLoss, Support, Resistance, StopLoss, 3-days AVG, Fibonacci Zone. Rows include daily data from 2016/10/10 to 2016/10/14 and weekly data for 2016/09/23, 2016/09/30, 2016/10/03, and 2016/10/10.

Table with columns: EUR/JPY, Demark, Pivot, StopLoss, Support, Resistance, StopLoss, 3-days AVG, Fibonacci Zone. Rows include daily data from 2016/10/10 to 2016/10/14 and weekly data for 2016/09/23, 2016/09/30, 2016/10/03, and 2016/10/10.

Table with columns: EUR/USD, Demark, Pivot, StopLoss, Support, Resistance, StopLoss, 3-days AVG, Fibonacci Zone. Rows include daily data from 2016/10/10 to 2016/10/14 and weekly data for 2016/09/23, 2016/09/30, 2016/10/03, and 2016/10/10.

Table with columns: GBP/JPY, Demark, Pivot, StopLoss, Support, Resistance, StopLoss, 3-days AVG, Fibonacci Zone. Rows include daily data from 2016/10/10 to 2016/10/14 and weekly data for 2016/09/23, 2016/09/30, 2016/10/03, and 2016/10/10.

Table with columns: GBP/USD, Demark, Pivot, StopLoss, Support, Resistance, StopLoss, 3-days AVG, Fibonacci Zone. Rows include daily data from 2016/10/10 to 2016/10/14 and weekly data for 2016/09/23, 2016/09/30, 2016/10/03, and 2016/10/10.

# IMM扱い8通貨/ダウ/日経/金/オイル/主要クロス円の過去5日及び過去5週の4本値

AUDUSD 5					CADUSD 5					CHFUSD 5				
Date	Open	High	Low	Close	Date	Open	High	Low	Close	Date	Open	High	Low	Close
2016/10/14	0.7566	0.7648	0.7557	0.7607	2016/10/14	0.7579	0.7631	0.7564	0.7608	2016/10/14	1.0138	1.0146	1.0096	1.0097
2016/10/13	0.7566	0.7581	0.7507	0.7566	2016/10/13	0.7536	0.7584	0.7515	0.7579	2016/10/13	1.0095	1.0143	1.0091	1.0138
2016/10/12	0.7536	0.7592	0.7536	0.7566	2016/10/12	0.7544	0.7570	0.7526	0.7536	2016/10/12	1.0117	1.0127	1.0091	1.0096
2016/10/11	0.7608	0.7611	0.7534	0.7536	2016/10/11	0.7595	0.7596	0.7536	0.7544	2016/10/11	1.0176	1.0182	1.0108	1.0116
2016/10/10	0.7595	0.7628	0.7580	0.7607	2016/10/10	0.7541	0.7610	0.7531	0.7596	2016/10/10	1.0224	1.0233	1.0163	1.0175

CNYUSD 5					EURUSD 5					GBPUSD 5				
Date	Open	High	Low	Close	Date	Open	High	Low	Close	Date	Open	High	Low	Close
2016/10/14	0.1485	0.1486	0.1484	0.1485	2016/10/14	1.1055	1.1058	1.0971	1.0972	2016/10/14	1.2249	1.2262	1.2169	1.2173
2016/10/13	0.1486	0.1486	0.1484	0.1484	2016/10/13	1.1009	1.1059	1.0986	1.1055	2016/10/13	1.2196	1.2272	1.2134	1.2250
2016/10/12	0.1486	0.1488	0.1486	0.1488	2016/10/12	1.1054	1.1068	1.1005	1.1009	2016/10/12	1.2116	1.2325	1.2116	1.2198
2016/10/11	0.1488	0.1489	0.1487	0.1487	2016/10/11	1.1139	1.1143	1.1050	1.1054	2016/10/11	1.2363	1.2366	1.2091	1.2116
2016/10/10	0.1491	0.1492	0.1490	0.1490	2016/10/10	1.1191	1.1200	1.1132	1.1138	2016/10/10	1.2434	1.2444	1.2345	1.2365

JPYUSD 5					MXNUSD 5					NZDUSD 5				
Date	Open	High	Low	Close	Date	Open	High	Low	Close	Date	Open	High	Low	Close
2016/10/14	0.9647	0.9651	0.9572	0.9595	2016/10/14	0.0529	0.0530	0.0525	0.0527	2016/10/14	0.7088	0.7133	0.7078	0.7082
2016/10/13	0.9593	0.9677	0.9557	0.9647	2016/10/13	0.0526	0.0529	0.0524	0.0528	2016/10/13	0.7049	0.7102	0.7035	0.7088
2016/10/12	0.9657	0.9682	0.9571	0.9594	2016/10/12	0.0529	0.0530	0.0526	0.0528	2016/10/12	0.7055	0.7095	0.7044	0.7048
2016/10/11	0.9648	0.9690	0.9609	0.9656	2016/10/11	0.0528	0.0531	0.0526	0.0529	2016/10/11	0.7142	0.7142	0.7048	0.7055
2016/10/10	0.9697	0.9726	0.9635	0.9648	2016/10/10	0.0528	0.0531	0.0526	0.0529	2016/10/10	0.7161	0.7178	0.7123	0.7142

Nikkei 225 - Japonia (NIKKEI)					5営業日内に休場日あり	
Date	Open	High	Low	Close	(ドル建て終値)	出来高
2016/10/14	16751.04	16866.56	16727.78	16856.37	161.78	0 1626161400
2016/10/13	16923.82	16974.25	16739.73	16774.24	161.51	1110596352 1659515700
2016/10/12	16850.73	16951.54	16839.41	16840.00	162.66	1162963840 1715620800
2016/10/11	16936.31	17074.46	16931.12	17024.76	163.83	1115804160 1665165000
2016/10/07	16883.12	16895.13	16820.21	16860.09	162.37	1003112512 1512292400
週4本値	16883.12	17074.46	16727.78	16856.37	161.78	(N225銘柄計)【東証一部全体計】

XAUUSD 5					
Date	Open	High	Low	Close	Volume
2016/10/14	1258.26	1259.08	1246.54	1251.72	0
2016/10/13	1256.16	1262.03	1253.05	1257.85	0
2016/10/12	1252.85	1258.57	1249.58	1255.01	0
2016/10/11	1259.61	1261.94	1252.67	1252.70	0
2016/10/10	1256.61	1264.74	1256.49	1259.31	0
週4本値	1256.61	1264.74	1246.54	1251.72	

Dow Jones Industrial - USA (DJIA)					
Date	Open	High	Low	Close	出来高
2016/10/14	18177.35	18261.11	18138.38	18138.38	87051703
2016/10/13	18088.32	18137.70	17959.95	18098.94	83156719
2016/10/12	18132.63	18193.96	18082.09	18144.20	72231546
2016/10/11	18308.43	18312.33	18061.96	18128.66	88614060
2016/10/10	18282.95	18399.96	18282.95	18329.04	72106841
週4本値	18282.95	18399.96	17959.95	18138.38	87051703

Historical Data by **Stooq**  
 Historical Data by **MarketNewsline**  
 Arrangement by **FX\_勝てば官軍?**

Crude Light Oil 5						
Date	Open	High	Low	Close	Volume	
2016/10/14	50.69	51.12	49.93	50.32	0	
2016/10/13	50.02	50.58	49.39	50.53	0	
2016/10/12	50.89	51.14	49.94	50.05	835076	
2016/10/11	51.15	51.48	50.41	50.87	1692255	
2016/10/10	49.61	51.58	49.16	51.17	1523014	
週4本値	49.61	51.58	49.16	50.32		

USDJPY 5					EURJPY 5					GBPJPY 5				
日付	始値	高値	安値	終値	日付	始値	高値	安値	終値	日付	始値	高値	安値	終値
2016/10/14	103.67	104.47	103.61	104.22	2016/10/14	114.60	115.05	114.22	114.36	2016/10/14	126.98	127.93	126.69	126.87
2016/10/13	104.24	104.63	103.34	103.66	2016/10/13	114.76	115.14	113.92	114.60	2016/10/13	127.13	127.48	125.93	126.99
2016/10/12	103.56	104.48	103.28	104.23	2016/10/12	114.47	115.17	114.04	114.75	2016/10/12	125.49	127.71	125.49	127.14
2016/10/11	103.64	104.07	103.19	103.56	2016/10/11	115.44	115.79	114.04	114.48	2016/10/11	128.14	128.37	124.85	125.48
2016/10/10	103.13	103.79	102.82	103.65	2016/10/10	115.41	115.73	115.08	115.44	2016/10/10	128.23	128.61	127.49	128.16

USDJPY Weekly 28					EURJPY Weekly 28					GBPJPY Weekly 28				
日付	始値	高値	安値	終値	日付	始値	高値	安値	終値	日付	始値	高値	安値	終値
2016/10/14	103.13	104.63	102.82	104.22	2016/10/14	115.41	115.79	113.92	114.36	2016/10/14	128.23	128.61	124.85	126.87
2016/10/07	101.33	104.16	101.21	102.91	2016/10/07	113.90	116.29	113.64	115.25	2016/10/07	131.16	132.23	123.29	128.02
2016/09/30	101.02	101.84	100.10	101.41	2016/09/30	113.43	114.19	112.25	113.91	2016/09/30	130.99	132.44	129.66	131.45
2016/09/23	102.26	102.78	100.10	101.03	2016/09/23	114.06	114.38	112.08	113.47	2016/09/23	132.99	133.48	130.41	130.98
2016/09/16	102.57	103.35	101.44	102.32	2016/09/16	115.24	116.09	113.94	114.13	2016/09/16	136.12	136.63	133.09	133.10



# 先週のIMM取り扱い対ドル8通貨チャート

※ 赤点線は週最高値/青天線は週最低値、BB中心線はSMA21

2016/10/10 ~ 2016/10/14

Chart by OANDA Japan MetaTrader4

