

JAPANESE YEN - CHICAGO MERCANTILE EXCHANGE

Code-097741

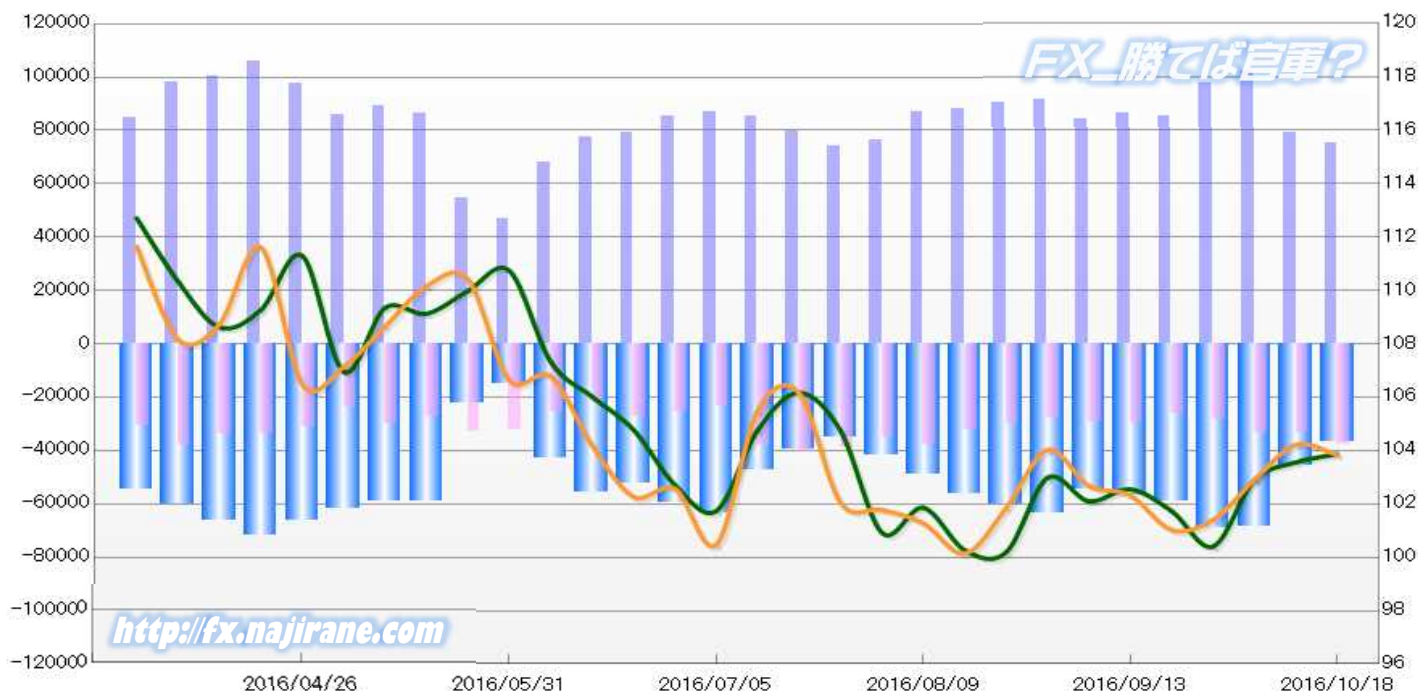
2016/04/26 ~ 2016/10/18

2016/10/21 NYクロース時公表値

Report_Date	Non Commercial Positions												火曜日 引け値	金曜日 引け値
	Long	増減	増減(%)	Short	増減	増減(%)	売り越し	増減	増減(%)	売買計	増減	増減(%)		
2016/10/18	74966	-4313	-5.4%	37975	4605	13.8%	-36991	-8918	-19.4%	112941	292	0.3%	103.87	103.83
2016/10/11	79279	-22707	-22.3%	33370	79	0.2%	-45909	-22786	-33.2%	112649	-22628	-16.7%	103.56	104.22
2016/10/04	101986	4554	4.7%	33291	4751	16.6%	-68695	-197	-0.3%	135277	9305	7.4%	102.90	102.91
2016/09/27	97432	12315	14.5%	28540	2208	8.4%	-68892	10107	17.2%	125972	14523	13.0%	100.41	101.41
2016/09/20	85117	-1023	-1.2%	26332	-2962	-10.1%	-58785	1939	3.4%	111449	-3985	-3.5%	101.73	101.03
2016/09/13	86140	2172	2.6%	29294	-185	-0.6%	-56846	2357	4.3%	115434	1987	1.8%	102.55	102.32
2016/09/06	83968	-7602	-8.3%	29479	1570	5.6%	-54489	-9172	-14.4%	113447	-6032	-5.0%	102.10	102.68
2016/08/30	91570	1183	1.3%	27909	-2162	-7.2%	-63661	3345	5.5%	119479	-979	-0.8%	102.98	104.03
2016/08/23	90387	2114	2.4%	30071	-2196	-6.8%	-60316	4310	7.7%	120458	-82	-0.1%	100.19	101.84
2016/08/16	88273	1554	1.8%	32267	-5621	-14.8%	-56006	7175	14.7%	120540	-4067	-3.3%	100.27	100.14
2016/08/09	86719	10144	13.2%	37888	3013	8.6%	-48831	7131	17.1%	124607	13157	11.8%	101.86	101.28
2016/08/02	76575	2501	3.4%	34875	-4241	-10.8%	-41700	6742	19.3%	111450	-1740	-1.5%	100.92	101.78
2016/07/26	74074	-5790	-7.2%	39116	-1395	-3.4%	-34958	-4395	-11.2%	113190	-7185	-6.0%	104.74	102.05
2016/07/19	79864	-5500	-6.4%	40511	2692	7.1%	-39353	-8192	-17.2%	120375	-2808	-2.3%	106.17	106.16
2016/07/12	85364	-1673	-1.9%	37819	14350	61.1%	-47545	-16023	-25.2%	123183	12677	11.5%	104.76	105.49
2016/07/05	87037	1544	1.8%	23469	-2274	-8.8%	-63568	3818	6.4%	110506	-730	-0.7%	101.74	100.47
2016/06/28	85493	6095	7.7%	25743	-1359	-5.0%	-59750	7454	14.3%	111236	4736	4.4%	102.71	102.57
2016/06/21	79398	1695	2.2%	27102	5089	23.1%	-52296	-3394	-6.1%	106500	6784	6.8%	104.78	102.27
2016/06/14	77703	9466	13.9%	22013	-3371	-13.3%	-55690	12837	30.0%	99716	6095	6.5%	106.02	104.19
2016/06/07	68237	21273	45.3%	25384	-6743	-21.0%	-42853	28016	188.8%	93621	14530	18.4%	107.33	106.78
2016/05/31	46964	-7828	-14.3%	32127	-606	-1.9%	-14837	-7222	-32.7%	79091	-8434	-9.6%	110.74	106.64
2016/05/24	54792	-31373	-36.4%	32733	5487	20.1%	-22059	-36860	-62.6%	87525	-25886	-22.8%	109.98	110.42
2016/05/17	86165	-2732	-3.1%	27246	-2604	-8.7%	-58919	-128	-0.2%	113411	-5336	-4.5%	109.13	110.16
2016/05/10	88897	3270	3.8%	29850	5744	23.8%	-59047	-2474	-4.0%	118747	9014	8.2%	109.35	108.65
2016/05/03	85627	-11843	-12.2%	24106	-6866	-22.2%	-61521	-4977	-7.5%	109733	-18709	-14.6%	106.95	107.14
2016/04/26	97470			30972			-66498			128442			111.30	106.48

JAPANESE YEN - CHICAGO MERCANTILE EXCHANGE
FUTURES ONLY POSITIONS

— 金曜終値 — 火曜終値 — Short枚数 — Long枚数 ■ 売り越し枚数(マイナスの場合は買越しと読替え)



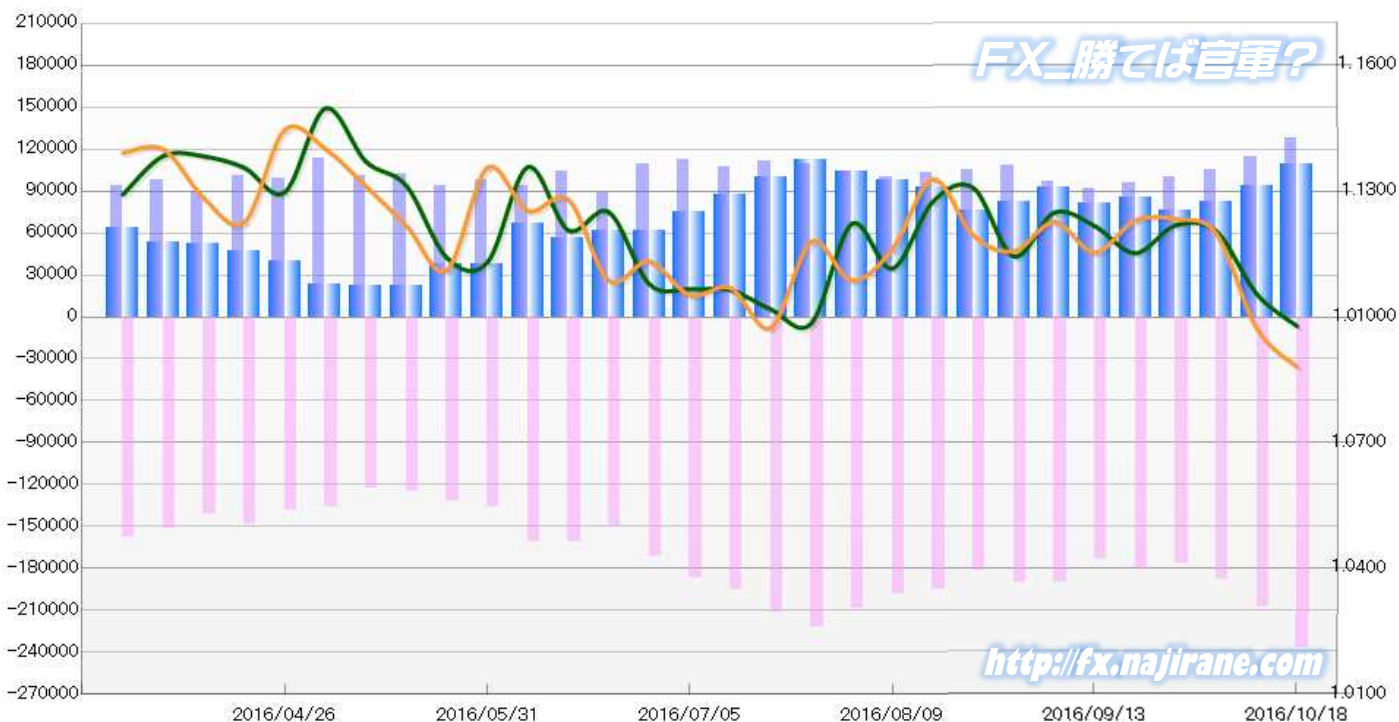
EURO FX - CHICAGO MERCANTILE EXCHANGE
2016/04/26 ~ 2016/10/18

Code-099741
2016/10/21 NYクローズ時公表値

Report_Date	Non Commercial Positions												火曜日 引け値	金曜日 引け値
	Long	増減		Short	増減		売り越し	増減		売買計	増減			
2016/10/18	128181	13897	12.2%	237449	29693	14.3%	109268	15796	16.9%	365630	43590	13.5%	1.0978	1.0880
2016/10/11	114284	8650	8.2%	207756	20063	10.7%	93472	11413	13.9%	322040	28713	9.8%	1.1054	1.0972
2016/10/04	105634	5142	5.1%	187693	11171	6.3%	82059	6029	7.9%	293327	16313	5.9%	1.1204	1.1199
2016/09/27	100492	4794	5.0%	176522	-4201	-2.3%	76030	-8995	-10.6%	277014	593	0.2%	1.1219	1.1233
2016/09/20	95698	3915	4.3%	180723	7465	4.3%	85025	3550	4.4%	276421	11380	4.3%	1.1152	1.1230
2016/09/13	91783	-5541	-5.7%	173258	-16696	-8.8%	81475	-11155	-12.0%	265041	-22237	-7.7%	1.1217	1.1154
2016/09/06	97324	-10937	-10.1%	189954	-232	-0.1%	92630	10705	13.1%	287278	-11169	-3.7%	1.1249	1.1226
2016/08/30	108261	2887	2.7%	190186	8154	4.5%	81925	5267	6.9%	298447	11041	3.8%	1.1144	1.1157
2016/08/23	105374	2314	2.2%	182032	-13536	-6.9%	76658	-15850	-17.1%	287406	-11222	-3.8%	1.1308	1.1195
2016/08/16	103060	2618	2.6%	195568	-3273	-1.6%	92508	-5891	-6.0%	298628	-655	-0.2%	1.1275	1.1328
2016/08/09	100442	-4074	-3.9%	198841	-9778	-4.7%	98399	-5704	-5.5%	299283	-13852	-4.4%	1.1115	1.1161
2016/08/02	104516	-4677	-4.3%	208619	-13174	-5.9%	104103	-8497	-7.5%	313135	-17851	-5.4%	1.1222	1.1087
2016/07/26	109193	-2385	-2.1%	221793	10324	4.9%	112600	12709	12.7%	330986	7939	2.5%	1.0985	1.1179
2016/07/19	111578	3943	3.7%	211469	16174	8.3%	99891	12231	14.0%	323047	20117	6.6%	1.1018	1.0974
2016/07/12	107635	-4376	-3.9%	195295	7957	4.2%	87660	12333	16.4%	302930	3581	1.2%	1.1065	1.1069
2016/07/05	112011	2431	2.2%	187338	15824	9.2%	75327	13393	21.6%	299349	18255	6.5%	1.1066	1.1052
2016/06/28	109580	20941	23.6%	171514	21529	14.4%	61934	588	1.0%	281094	42470	17.8%	1.1078	1.1132
2016/06/21	88639	-15871	-15.2%	149985	-11014	-6.8%	61346	4857	8.6%	238624	-26885	-10.1%	1.1250	1.1087
2016/06/14	104510	11018	11.8%	160999	395	0.2%	56489	-10623	-15.8%	265509	11413	4.5%	1.1207	1.1280
2016/06/07	93492	-4726	-4.8%	160604	24732	18.2%	67112	29458	78.2%	254096	20006	8.5%	1.1357	1.1253
2016/05/31	98218	4263	4.5%	135872	4022	3.1%	37654	-241	-0.6%	234090	8285	3.7%	1.1130	1.1356
2016/05/24	93955	-7768	-7.6%	131850	7540	6.1%	37895	15308	67.8%	225805	-228	-0.1%	1.1141	1.1111
2016/05/17	101723	446	0.4%	124310	1161	0.9%	22587	715	3.3%	226033	1607	0.7%	1.1313	1.1218
2016/05/10	101277	-11757	-10.4%	123149	-13504	-9.9%	21872	-1747	-7.4%	224426	-25261	-10.1%	1.1371	1.1312
2016/05/03	113034	13962	14.1%	136653	-2086	-1.5%	23619	-16048	-40.5%	249687	11876	5.0%	1.1497	1.1401
2016/04/26	99072			138739			39667			237811			1.1297	1.1446

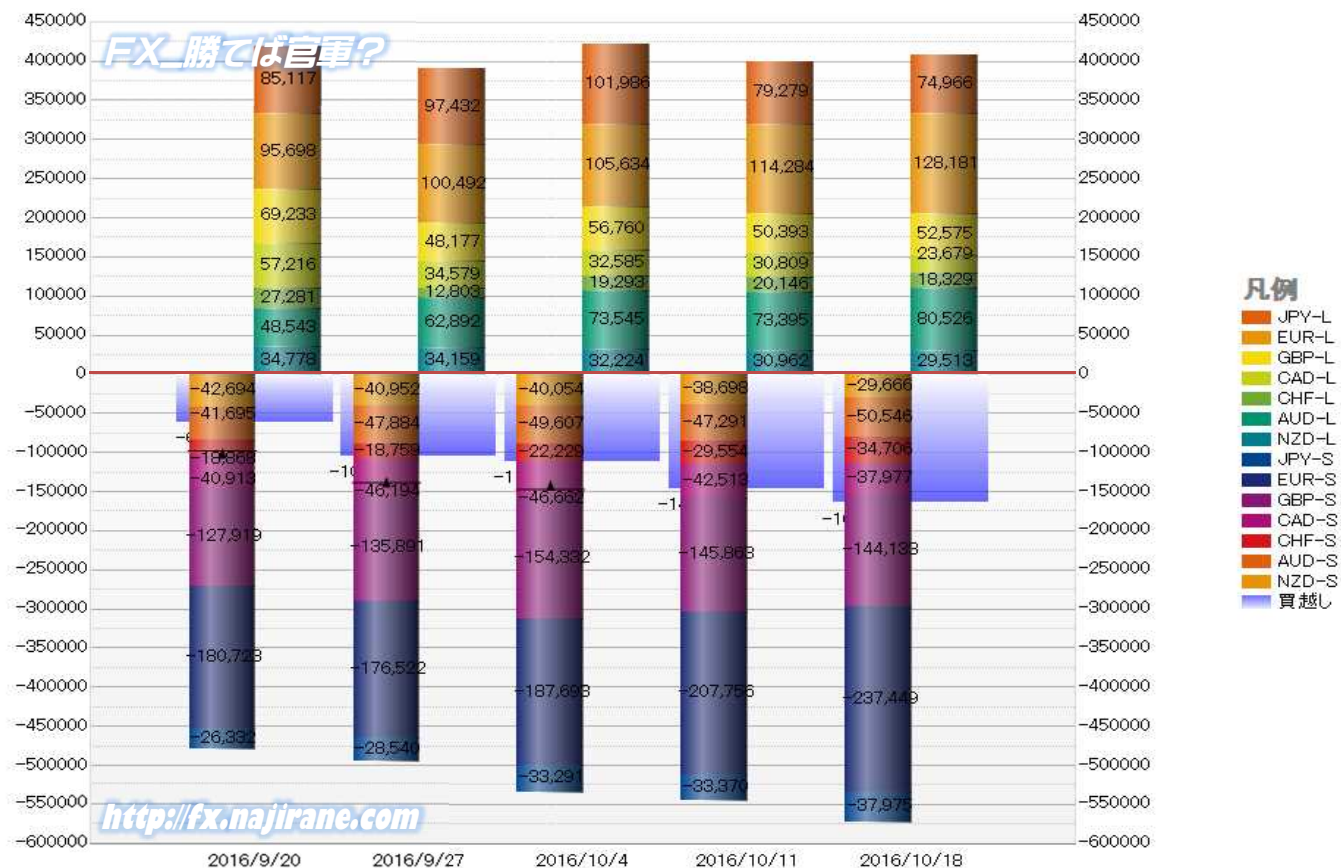
EURO FX - CHICAGO MERCANTILE EXCHANGE
FUTURES ONLY POSITIONS

— 金曜締め週終値 — 火曜締め週終値 — Short枚数 — Long枚数 — 売り越し枚数(マイナスの場合は買越しと読替え)



	2016/09/20			2016/09/27			2016/10/04			2016/10/11			2016/10/18		
	Long	Short	売り越し	Long	Short	売り越し	Long	Short	売り越し	Long	Short	売り越し	Long	Short	売り越し
JPY	85117	26332	-58785	97432	28540	-68892	101986	33291	-68695	79279	33370	-45909	74966	37975	-36991
	前週比 枚数増減 (枚)			12315	2208	10107	4554	4751	-197	-22707	79	-22786	-4313	4605	-8918
	前週比 枚数増減 (%)			14.47%	8.39%	17.19%	4.67%	16.65%	-0.29%	-22.26%	0.24%	-33.17%	-5.44%	13.80%	-19.43%
EUR	95698	180723	85025	100492	176522	76030	105634	187693	82059	114284	207756	93472	128181	237449	109268
	前週比 枚数増減 (枚)			4794	-4201	-8995	5142	11171	6029	8650	20063	11413	13897	29693	15796
	前週比 枚数増減 (%)			5.01%	-2.32%	-10.58%	5.12%	6.33%	7.93%	8.19%	10.69%	13.91%	12.16%	14.29%	16.90%
GBP	69233	127919	58686	48177	135891	87714	56760	154332	97572	50393	145863	95470	52575	144133	91558
	前週比 枚数増減 (枚)			-21056	7972	29028	8583	18441	9858	-6367	-8469	-2102	2182	-1730	-3912
	前週比 枚数増減 (%)			-30.41%	6.23%	49.46%	17.82%	13.57%	11.24%	-11.22%	-5.49%	-2.15%	4.33%	-1.19%	-4.10%
AUD	48543	41695	-6848	62892	47884	-15008	73545	49607	-23938	73395	47291	-26104	80526	50546	-29980
	前週比 枚数増減 (枚)			14349	6189	8160	10653	1723	8930	-150	-2316	2166	7131	3255	3876
	前週比 枚数増減 (%)			29.56%	14.84%	119.16%	16.94%	3.60%	59.50%	-0.20%	-4.67%	9.05%	9.72%	6.88%	14.85%
CAD	57216	40913	-16303	34579	46194	11615	32585	46662	14077	30809	42513	11704	23679	37977	14298
	前週比 枚数増減 (枚)			-22637	5281	-4688	-1994	468	2462	-1776	-4149	-2373	-7130	-4536	2594
	前週比 枚数増減 (%)			-39.56%	12.91%	-171.24%	-5.77%	1.01%	21.20%	-5.45%	-8.89%	-16.86%	-23.14%	-10.67%	22.16%
CHF	27281	18868	-8413	12803	18759	5956	19293	22229	2936	20146	29554	9408	18329	34706	16377
	前週比 枚数増減 (枚)			-14478	-109	-2457	6490	3470	-3020	853	7325	6472	-1817	5152	6969
	前週比 枚数増減 (%)			-53.07%	-0.58%	-170.80%	50.69%	18.50%	-50.71%	4.42%	32.95%	220.44%	-9.02%	17.43%	74.08%
NZD	34778	42694	7916	34159	40952	6793	32224	40054	7830	30962	38698	7736	29513	29666	153
	前週比 枚数増減 (枚)			-619	-1742	-1123	-1935	-898	1037	-1262	-1356	-94	-1449	-9032	-7583
	前週比 枚数増減 (%)			-1.78%	-4.08%	-14.19%	-5.66%	-2.19%	15.27%	-3.92%	-3.39%	-1.20%	-4.68%	-23.34%	-98.02%
MXN	20526	109868	89342	24865	110738	85873	22358	108250	85892	38060	89852	51792	33364	64083	30719
	前週比 枚数増減 (枚)			4339	870	-3469	-2507	-2488	19	15702	-18398	-34100	-4696	-25769	-21073
	前週比 枚数増減 (%)			21.14%	0.79%	-3.88%	-10.08%	-2.25%	0.02%	70.23%	-17.00%	-39.70%	-12.34%	-28.68%	-40.69%
Total All 8	438392	589012	150620	415399	605480	190081	444385	642118	197733	437328	634897	197569	441133	636535	195402
	前週比 枚数増減 (枚)			-22993	16468	39461	28986	36638	7652	-7057	-7221	-164	3805	1638	-2167
	前週比 枚数増減 (%)			-5.24%	2.80%	26.20%	6.98%	6.05%	4.03%	-1.59%	-1.12%	-0.08%	0.87%	0.26%	-1.10%
Total 7 (MXN除く)	417866	479144	61278	390534	494742	104208	422027	533868	111841	399268	545045	145777	407769	572452	164683
	前週比 枚数増減 (枚)			-27332	15598	42930	31493	39126	7633	-22759	11177	33936	8501	27407	18906
	前週比 枚数増減 (%)			-6.5%	3.3%	70.1%	8.1%	7.9%	7.3%	-5.4%	2.1%	30.3%	2.1%	5.0%	13.0%

直近5週 CFTC IMM主要7通貨の構成

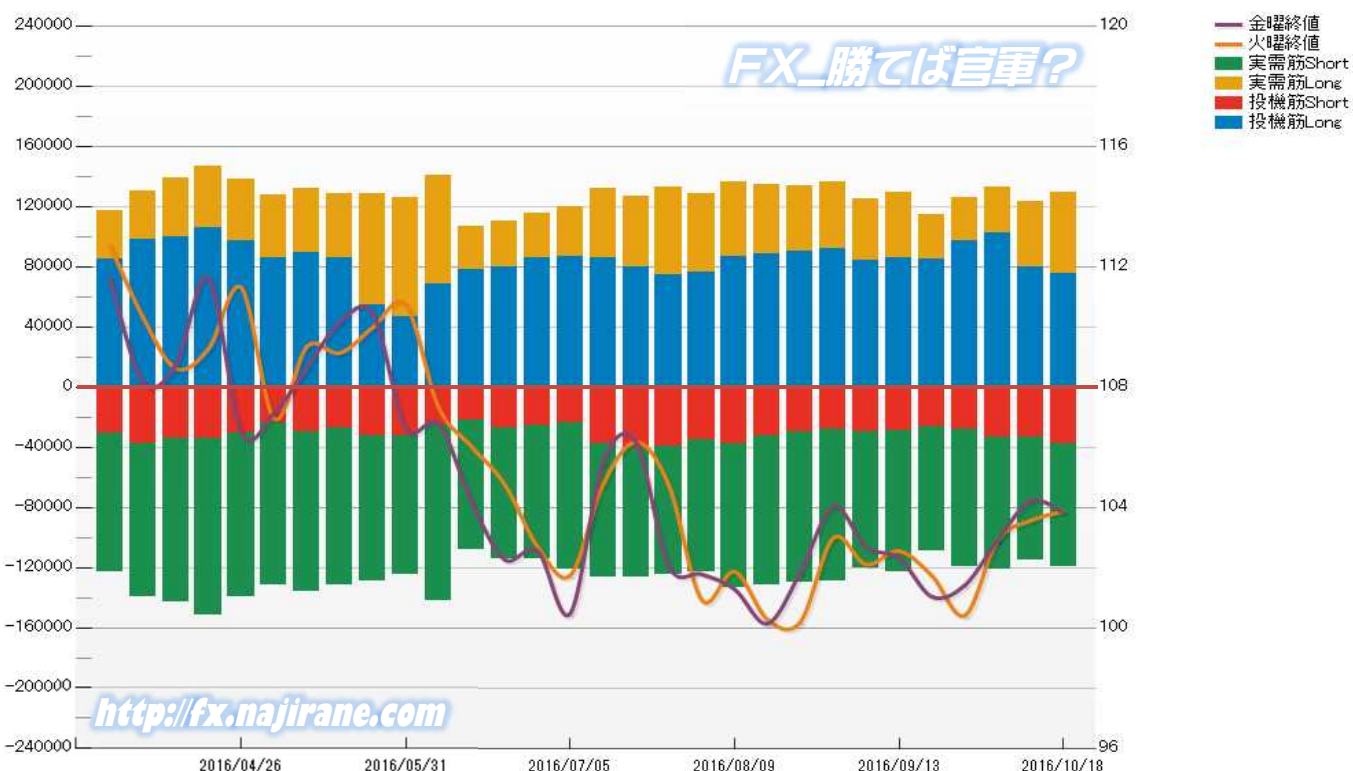


JAPANESE YEN - CHICAGO MERCANTILE EXCHANGE
FUTURES ONLY POSITIONS

Code-097741
2016/10/21 公表値

Date	投機筋集計				実需筋集計				投機筋+実需筋合計				ドル円終値	
	円買い	円売り	売り越し	売買計	円買い	円売り	売り越し	売買計	円買い	円売り	売り越し	売買計	火曜締め	金曜締め
2016/10/18	74966	37975	-36991	112941	54359	81884	27525	136243	129325	119859	-9466	249184	103.87	103.83
2016/10/11	79279	33370	-45909	112649	43806	81544	37738	125350	123085	114914	-8171	237999	103.56	104.22
2016/10/04	101986	33291	-68695	135277	30627	87820	57193	118447	132613	121111	-11502	253724	102.90	102.91
2016/09/27	97432	28540	-68892	125972	28326	90589	62263	118915	125758	119129	-6629	244887	100.41	101.41
2016/09/20	85117	26332	-58785	111449	29715	83021	53306	112736	114832	109353	-5479	224185	101.73	101.03
2016/09/13	86140	29294	-56846	115434	43492	93700	50208	137192	129632	122994	-6638	252626	102.55	102.32
2016/09/06	83968	29479	-54489	113447	41120	91024	49904	132144	125088	120503	-4585	245591	102.10	102.68
2016/08/30	91570	27909	-63661	119479	44366	101570	57204	145936	135936	129479	-6457	265415	102.98	104.03
2016/08/23	90387	30071	-60316	120458	43245	99482	56237	142727	133632	129553	-4079	263185	100.19	101.84
2016/08/16	88273	32267	-56006	120540	46280	99196	52916	145476	134553	131463	-3090	266016	100.27	100.14
2016/08/09	86719	37888	-48831	124607	49619	95343	45724	144962	136338	133231	-3107	269569	101.86	101.28
2016/08/02	76575	34875	-41700	111450	51707	88074	36367	139781	128282	122949	-5333	251231	100.92	101.78
2016/07/26	74074	39116	-34958	113190	58947	85458	26511	144405	133021	124574	-8447	257595	104.74	102.05
2016/07/19	79864	40511	-39353	120375	46993	85719	38726	132712	126857	126230	-627	253087	106.17	106.16
2016/07/12	85364	37819	-47545	123183	46842	88850	42008	135692	132206	126669	-5537	258875	104.76	105.49
2016/07/05	87037	23469	-63568	110506	32637	97652	65015	130289	119674	121121	1447	240795	101.74	100.47
2016/06/28	85493	25743	-59750	111236	30249	88316	58067	118565	115742	114059	-1683	229801	102.71	102.57
2016/06/21	79398	27102	-52296	106500	30450	86992	56542	117442	109848	114094	4246	223942	104.78	102.27
2016/06/14	77703	22013	-55690	99716	28678	86062	57384	114740	106381	108075	1694	214456	106.02	104.19
2016/06/07	68237	25384	-42853	93621	72616	116477	43861	189093	140853	141861	1008	282714	107.33	106.78
2016/05/31	46964	32127	-14837	79091	78749	92275	13526	171024	125713	124402	-1311	250115	110.74	106.64
2016/05/24	54792	32733	-22059	87525	73603	96638	23035	170241	128395	129371	976	257766	109.98	110.42
2016/05/17	86165	27246	-58919	113411	41969	104408	62439	146377	128134	131654	3520	259788	109.13	110.16
2016/05/10	88897	29850	-59047	118747	43309	106603	63294	149912	132206	136453	4247	268659	109.35	108.65
2016/05/03	85627	24106	-61521	109733	41904	107399	65495	149303	127531	131505	3974	259036	106.95	107.14
2016/04/26	97470	30972	-66498	128442	40734	108419	67685	149153	138204	139391	1187	277595	111.30	106.48
2016/04/19	105710	33840	-71870	139550	41258	118087	76829	159345	146968	151927	4959	298895	109.27	111.62
2016/04/12	100120	33930	-66190	134050	38652	109410	70758	148062	138772	143340	4568	282112	108.62	108.73
2016/04/05	98130	38057	-60073	136187	32451	101508	69057	133959	130581	139565	8984	270146	110.34	108.17
2016/03/29	84870	30483	-54387	115353	32118	92081	59963	124199	116988	122564	5576	239552	112.71	111.65

JAPANESE YEN - CHICAGO MERCANTILE EXCHANGE
FUTURES ONLY POSITIONS Code-097741

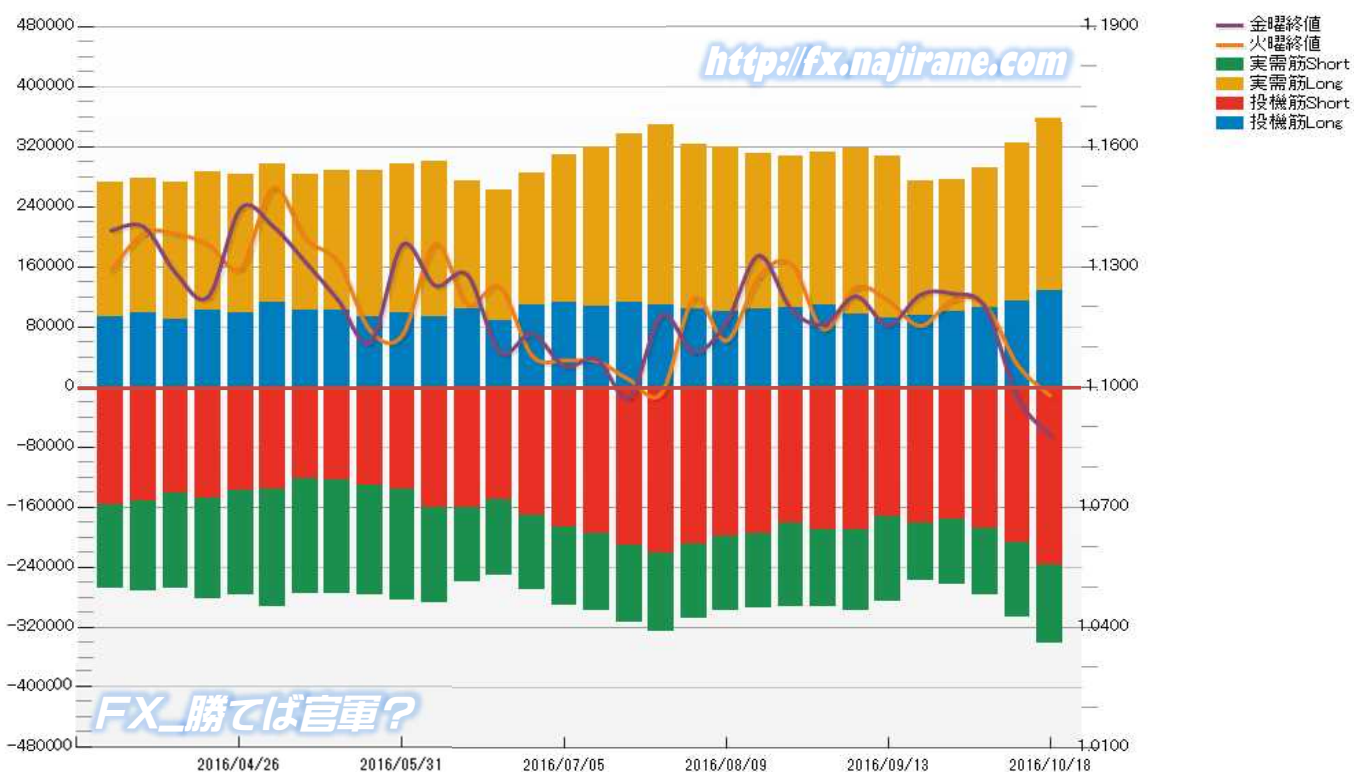


**EURO FX - CHICAGO MERCANTILE EXCHANGE
FUTURES ONLY POSITIONS**

**Code-099741
2016/10/21 公表値**

Date	投機筋集計				実需筋集計				投機筋+実需筋合計				ユーロドル終値	
	EUR買い	EUR売り	売り越し	売買計	EUR買い	EUR売り	売り越し	売買計	EUR買い	EUR売り	売り越し	売買計	火曜締め	金曜締め
2016/10/18	128181	237449	109268	365630	230197	104790	-125407	334987	358378	342239	-16139	700617	1.0978	1.0880
2016/10/11	114284	207756	93472	322040	209879	99131	-110748	309010	324163	306887	-17276	631050	1.1054	1.0972
2016/10/04	105634	187693	82059	293327	186827	89483	-97344	276310	292461	277176	-15285	569637	1.1204	1.1199
2016/09/27	100492	176522	76030	277014	174828	86986	-87842	261814	275320	263508	-11812	538828	1.1219	1.1233
2016/09/20	95698	180723	85025	276421	177910	77967	-99943	255877	273608	258690	-14918	532298	1.1152	1.1230
2016/09/13	91783	173258	81475	265041	216048	112825	-103223	328873	307831	286083	-21748	593914	1.1217	1.1154
2016/09/06	97324	189954	92630	287278	220781	107441	-113340	328222	318105	297395	-20710	615500	1.1249	1.1226
2016/08/30	108261	190186	81925	298447	204241	103433	-100808	307674	312502	293619	-18883	606121	1.1144	1.1157
2016/08/23	105374	182032	76658	287406	202180	111006	-91174	313186	307554	293038	-14516	600592	1.1308	1.1195
2016/08/16	103060	195568	92508	298628	208203	99798	-108405	308001	311263	295366	-15897	606629	1.1275	1.1328
2016/08/09	100442	198841	98399	299283	218984	99470	-119514	318454	319426	298311	-21115	617737	1.1115	1.1161
2016/08/02	104516	208619	104103	313135	218778	99452	-119326	318230	323294	308071	-15223	631365	1.1222	1.1087
2016/07/26	109193	221793	112600	330986	239073	103338	-135735	342411	348266	325131	-23135	673397	1.0985	1.1179
2016/07/19	111578	211469	99891	323047	225909	101654	-124255	327563	337487	313123	-24364	650610	1.1018	1.0974
2016/07/12	107635	195295	87660	302930	211520	103371	-108149	314891	319155	298666	-20489	617821	1.1065	1.1069
2016/07/05	112011	187338	75327	299349	197845	104095	-93750	301940	309856	291433	-18423	601289	1.1066	1.1052
2016/06/28	109580	171514	61934	281094	175747	99094	-76653	274841	285327	270608	-14719	555935	1.1078	1.1132
2016/06/21	88639	149985	61346	238624	174231	100833	-73398	275064	262870	250818	-12052	513688	1.1250	1.1087
2016/06/14	104510	160999	56489	265509	168953	98248	-70705	267201	273463	259247	-14216	532710	1.1207	1.1280
2016/06/07	93492	160604	67112	254096	207448	127910	-79538	335358	300940	288514	-12426	589454	1.1357	1.1253
2016/05/31	98218	135872	37654	234090	198726	148012	-50714	346738	296944	283884	-13060	580828	1.1130	1.1356
2016/05/24	93955	131850	37895	225805	193758	145257	-48501	339015	287713	277107	-10606	564820	1.1141	1.1111
2016/05/17	101723	124310	22587	226033	186065	151949	-34116	338014	287788	276259	-11529	564047	1.1313	1.1218
2016/05/10	101277	123149	21872	224426	181863	152379	-29484	334242	283140	275528	-7612	558668	1.1371	1.1312
2016/05/03	113034	136653	23619	249687	184524	156966	-27558	341490	297558	293619	-3939	591177	1.1497	1.1401
2016/04/26	99072	138739	39667	237811	182996	138270	-44726	321266	282068	277009	-5059	559077	1.1297	1.1446
2016/04/19	101211	148128	46917	249339	185459	133519	-51940	318978	286670	281647	-5023	568317	1.1356	1.1225
2016/04/12	89216	141267	52051	230483	182596	126793	-55803	309389	271812	268060	-3752	539872	1.1383	1.1284
2016/04/05	98014	151501	53487	249515	180268	120531	-59737	300799	278282	272032	-6250	550314	1.1384	1.1400
2016/03/29	93726	157537	63811	251263	178491	111140	-67351	289631	272217	268677	-3540	540894	1.1292	1.1391

**EURO FX - CHICAGO MERCANTILE EXCHANGE
FUTURES ONLY POSITIONS Code-099741**



CME Daily Volume

シカゴ・マーカントイル取引所 取扱高日次データ

FX_勝てば官軍?

<http://fx.najirane.com>

EU Euro	取扱高			当日含む前5営業日計			参考レート	
	CALL	PUT	FUTURE	CALL	PUT	FUTURE	Open	Close
2016/10/20 (木)	17758	16699	206218	41241	44693	733522	1.0974	1.0925
2016/10/19 (水)	6515	8149	118933	32625	35041	712733	1.0979	1.0974
2016/10/18 (火)	6031	6958	131860	38234	40005	784587	1.0999	1.0978
2016/10/17 (月)	2989	3298	110580	44033	52872	838700	1.0970	1.1000
2016/10/14 (金)	7948	9589	165931	44776	54209	817150	1.1055	1.0972
2016/10/13 (木)	9142	7047	185429	51640	72450	896497	1.1009	1.1055
2016/10/12 (水)	12124	13113	190787	53905	86939	872192	1.1054	1.1009
2016/10/11 (火)	11830	19825	185973	45714	79452	831314	1.1139	1.1054
2016/10/10 (月)	3732	4635	89030	46565	76532	903064	1.1191	1.1138
2016/10/7 (金)	14812	27830	245278	48073	76582	921360	1.1148	1.1199

AUS Dollar	取扱高			当日含む前5営業日計			参考レート	
	CALL	PUT	FUTURE	CALL	PUT	FUTURE	Open	Close
2016/10/20 (木)	1653	2024	113915	8510	10025	473743	0.7719	0.7626
2016/10/19 (水)	2295	1717	92207	8545	9985	470950	0.7673	0.7719
2016/10/18 (火)	863	1854	87341	7805	13088	472440	0.7633	0.7672
2016/10/17 (月)	764	1521	63374	10315	13990	479200	0.7618	0.7634
2016/10/14 (金)	2935	2909	116906	10167	13260	473496	0.7566	0.7607
2016/10/13 (木)	1688	1984	111122	8952	12966	472458	0.7566	0.7566
2016/10/12 (水)	1555	4820	93697	9094	14624	451939	0.7536	0.7566
2016/10/11 (火)	3373	2756	94101	9487	13960	457536	0.7608	0.7536
2016/10/10 (月)	616	791	57670	8473	16968	464804	0.7595	0.7607
2016/10/7 (金)	1720	2615	115868	9156	17725	469758	0.7583	0.7588

CHE Franc	取扱高			当日含む前5営業日計			参考レート	
	CALL	PUT	FUTURE	CALL	PUT	FUTURE	Open	Close
2016/10/20 (木)	377	0	78	586	0	391	1.0112	1.0071
2016/10/19 (水)	0	0	160	286	0	378	1.0100	1.0112
2016/10/18 (火)	45	0	2	287	0	233	1.0110	1.0101
2016/10/17 (月)	152	0	150	267	0	501	1.0099	1.0112
2016/10/14 (金)	12	0	1	329	0	643	1.0138	1.0097
2016/10/13 (木)	77	0	65	330	0	679	1.0095	1.0138
2016/10/12 (水)	1	0	15	291	0	649	1.0117	1.0096
2016/10/11 (火)	25	0	270	291	0	656	1.0176	1.0116
2016/10/10 (月)	214	0	292	322	0	429	1.0224	1.0175
2016/10/7 (金)	13	0	37	332	0	172	1.0195	1.0232

JPN Yen	取扱高			当日含む前5営業日計			参考レート	
	CALL	PUT	FUTURE	CALL	PUT	FUTURE	Open	Close
2016/10/20 (木)	3230	9589	96205	14634	21744	490006	103.39	103.97
2016/10/19 (水)	3289	2756	83913	16495	18230	528860	103.89	103.39
2016/10/18 (火)	2487	1954	86602	16701	21820	561935	103.91	103.87
2016/10/17 (月)	2814	3756	99156	18171	23351	597644	104.35	103.90
2016/10/14 (金)	2814	3689	124130	16382	22313	565206	103.67	104.22
2016/10/13 (木)	5091	6075	135059	21510	29448	614516	104.24	103.66
2016/10/12 (水)	3495	6346	116988	26753	35754	594678	103.56	104.23
2016/10/11 (火)	3957	3485	122311	28375	36420	608957	103.64	103.56
2016/10/10 (月)	1025	2718	66718	32537	47655	644144	103.13	103.65
2016/10/7 (金)	7942	10824	173440	36489	47264	660575	103.99	102.91

CAN Dollar	取扱高			当日含む前5営業日計			参考レート	
	CALL	PUT	FUTURE	CALL	PUT	FUTURE	Open	Close
2016/10/20 (木)	1919	1681	71441	7237	6638	371543	0.7620	0.7558
2016/10/19 (水)	1570	1769	102199	8671	5777	371118	0.7629	0.7620
2016/10/18 (火)	860	728	65597	9394	5872	333863	0.7617	0.7627
2016/10/17 (月)	1604	1131	52229	9658	6403	337015	0.7612	0.7617
2016/10/14 (金)	1284	1329	80077	9362	6789	347030	0.7579	0.7608
2016/10/13 (木)	3353	820	71016	12837	10886	373271	0.7536	0.7579
2016/10/12 (水)	2293	1864	64944	11916	12728	365324	0.7544	0.7536
2016/10/11 (火)	1124	1259	68749	11024	12329	361292	0.7595	0.7544
2016/10/10 (月)	1308	1517	62244	12555	13861	350577	0.7541	0.7596
2016/10/7 (金)	4759	5426	106318	12124	13881	342290	0.7567	0.7530

NZL Dollar	取扱高			当日含む前5営業日計			参考レート	
	CALL	PUT	FUTURE	CALL	PUT	FUTURE	Open	Close
2016/10/20 (木)	0	0	23738	0	0	113573	0.7229	0.7189
2016/10/19 (水)	0	0	25671	0	0	117102	0.7196	0.7229
2016/10/18 (火)	0	0	17204	0	0	116285	0.7172	0.7196
2016/10/17 (月)	0	0	22413	0	0	118605	0.7093	0.7172
2016/10/14 (金)	0	0	28076	0	0	113978	0.7088	0.7082
2016/10/13 (木)	0	0	22921	0	0	123493	0.7049	0.7088
2016/10/12 (水)	0	0	27991	0	0	118298	0.7055	0.7048
2016/10/11 (火)	0	0	12577	0	0	124162	0.7142	0.7055
2016/10/10 (月)	0	0	31928	0	0	127778	0.7161	0.7142
2016/10/7 (金)	0	0	22881	0	0	132398	0.7166	0.7160

MEX Peso	取扱高			当日含む前5営業日計			参考レート	
	CALL	PUT	FUTURE	CALL	PUT	FUTURE	Open	Close
2016/10/20 (木)	37	183	74717	603	421	265480	5.3978	5.3755
2016/10/19 (水)	70	35	59008	603	280	236510	5.3794	5.3917
2016/10/18 (火)	219	161	45539	533	254	214720	5.3373	5.3726
2016/10/17 (月)	90	38	34289	577	156	213004	5.2523	5.2995
2016/10/14 (金)	187	4	51927	840	495	237678	5.2868	5.2677
2016/10/13 (木)	37	42	45747	763	545	254572	5.2650	5.2764
2016/10/12 (水)	0	9	37218	885	536	250182	5.2865	5.2844
2016/10/11 (火)	263	63	43823	959	639	271411	5.2837	5.2882
2016/10/10 (月)	353	377	58963	784	611	278931	5.2791	5.2855
2016/10/7 (金)	110	54	68821	501	351	253982	5.1694	5.1917

過去5日及び過去4週の4本値と各種ピボット

2016/10/17 ~ 2016/10/21

USD/JPY										Demark						Pivot						Fibonacci Zone									
当日のOHLCLから計算される翌日の										TD Range Projection						TD pivot points															
日足	Open	High	Low	Close	値幅/日	引け形態	真の高値	真の安値	予想高値	予想安値	予想高値	予想安値	StopLoss	Support	Pivot	Resistance	StopLoss	3-days AVG	Support Zone 2	Support Zone 1	BP	Resistance Zone 1	Resistance Zone 2								
													LBOp	S2	S1	PP	R1	R2	HBOP												
2016/10/17	104.35	104.37	103.79	103.90	58p	陰線引け	-	-	-	-	-	-	103.09	103.44	103.67	104.02	104.25	104.60	104.82												
2016/10/18	103.91	104.20	103.68	103.87	52p	陰線引け	104.20	103.68	104.04	103.52	104.04	103.52	103.12	103.40	103.64	103.92	104.15	104.43	104.67												
2016/10/19	103.89	103.95	103.18	103.39	77p	陰線引け	103.95	103.18	103.67	102.90	103.67	102.90	102.29	102.73	103.06	103.51	103.84	104.28	104.61	103.81	Bear	102.44	~ 102.73	103.03	~ 103.12	103.51	103.89	~ 103.98	104.28	~ 104.57	
2016/10/20	103.39	104.11	103.35	103.97	76p	陰線引け	104.11	103.35	104.42	103.66	104.42	103.66	102.75	103.05	103.51	103.81	104.27	104.57	105.03	103.74	Bull	102.76	~ 103.05	103.34	~ 103.43	103.81	104.19	~ 104.28	104.57	~ 104.86	
2016/10/21	103.99	104.20	103.53	103.83	68p	陰線引け	104.20	103.53	104.02	103.34	104.02	103.34	102.82	103.17	103.50	103.85	104.18	104.53	104.86	103.72	Bull	102.92	~ 103.17	103.43	~ 103.51	103.85	104.19	~ 104.27	104.53	~ 104.79	
週足	Open	High	Low	Close	値幅/週	引け形態	真の高値	真の安値	予想高値	予想安値	予想高値	予想安値	LBOp	S2	S1	PP	R1	R2	HBOP	3-days AVG	Support Zone 2	Support Zone 1	BP	Resistance Zone 1	Resistance Zone 2						
2016/09/26 ~ 2016/09/30	101.02	101.84	100.10	101.41	174p	陰線引け	-	-	-	-	-	-	98.65	99.38	100.39	101.12	102.13	102.86	103.87												
2016/10/03 ~ 2016/10/07	101.33	104.16	101.21	102.91	295p	陰線引け	104.16	100.10	105.57	101.51	105.01	102.06	98.42	99.82	101.37	102.76	104.31	105.71	107.26												
2016/10/10 ~ 2016/10/14	103.13	104.63	102.82	104.22	182p	陰線引け	104.63	102.82	105.34	103.52	105.34	103.52	101.33	102.07	103.15	103.89	104.97	105.71	106.78	102.59	Bull	101.38	~ 102.07	102.77	~ 102.98	103.89	104.80	~ 105.01	105.71	~ 106.40	
2016/10/17 ~ 2016/10/21	104.35	104.37	103.18	103.83	119p	陰線引け	104.37	103.18	104.10	102.91	104.10	102.91	102.02	102.60	103.21	103.79	104.41	104.99	105.60	103.48	Bull	102.14	~ 102.60	103.05	~ 103.20	103.79	104.39	~ 104.53	104.99	~ 105.44	

EUR/JPY										Demark						Pivot						Fibonacci Zone									
当日のOHLCLから計算される翌日の										TD Range Projection						TD pivot points															
日足	Open	High	Low	Close	値幅/日	引け形態	真の高値	真の安値	予想高値	予想安値	予想高値	予想安値	StopLoss	Support	Pivot	Resistance	StopLoss	3-days AVG	Support Zone 2	Support Zone 1	BP	Resistance Zone 1	Resistance Zone 2								
													LBOp	S2	S1	PP	R1	R2	HBOP												
2016/10/17	114.46	114.58	114.04	114.28	54p	陰線引け	-	-	-	-	-	-	113.48	113.76	114.02	114.30	114.56	114.84	115.10												
2016/10/18	114.28	114.68	113.99	114.03	70p	陰線引け	114.68	113.99	114.36	113.66	114.36	113.66	113.09	113.54	113.78	114.23	114.48	114.93	115.18												
2016/10/19	114.06	114.16	113.13	113.47	103p	陰線引け	114.16	113.13	113.81	112.79	113.81	112.79	111.98	112.56	113.01	113.59	114.04	114.62	115.07	114.04	Bear	112.17	~ 112.56	112.95	~ 113.07	113.59	114.10	~ 114.22	114.62	~ 115.01	
2016/10/20	113.47	114.51	113.38	113.58	113p	陰線引け	114.51	113.38	114.61	113.48	114.61	113.48	112.00	112.69	113.14	113.82	114.27	114.96	115.40	113.88	Bear	112.26	~ 112.69	113.12	~ 113.26	113.82	114.39	~ 114.52	114.96	~ 115.39	
2016/10/21	113.61	113.84	112.61	112.97	123p	陰線引け	113.84	112.61	113.41	112.17	113.41	112.17	111.21	111.91	112.44	113.14	113.67	114.37	114.90	113.52	Bear	111.44	~ 111.91	112.38	~ 112.52	113.14	113.76	~ 113.90	114.37	~ 114.84	
週足	Open	High	Low	Close	値幅/週	引け形態	真の高値	真の安値	予想高値	予想安値	予想高値	予想安値	LBOp	S2	S1	PP	R1	R2	HBOP	3-days AVG	Support Zone 2	Support Zone 1	BP	Resistance Zone 1	Resistance Zone 2						
2016/09/26 ~ 2016/09/30	113.43	114.19	112.25	113.91	193p	陰線引け	-	-	-	-	-	-	110.78	111.52	112.71	113.45	114.65	115.38	116.58												
2016/10/03 ~ 2016/10/07	113.90	116.29	113.64	115.25	265p	陰線引け	116.29	112.25	117.78	113.75	117.09	114.44	111.18	112.41	113.83	115.06	116.48	117.71	119.13												
2016/10/10 ~ 2016/10/14	115.41	115.79	113.92	114.36	187p	陰線引け	115.79	113.92	115.07	113.20	115.07	113.20	111.72	112.82	113.59	114.69	115.46	116.56	117.33	114.40	Bull	112.10	~ 112.82	113.53	~ 113.75	114.69	115.63	~ 115.85	116.56	~ 117.28	
2016/10/17 ~ 2016/10/21	114.46	114.68	112.61	112.97	207p	陰線引け	114.68	112.61	113.82	111.75	113.82	111.75	110.09	111.35	112.16	113.42	114.23	115.49	116.30	114.39	Bear	110.56	~ 111.35	112.14	~ 112.39	113.42	114.46	~ 114.70	115.49	~ 116.28	

EUR/USD										Demark						Pivot						Fibonacci Zone									
当日のOHLCLから計算される翌日の										TD Range Projection						TD pivot points															
日足	Open	High	Low	Close	値幅/日	引け形態	真の高値	真の安値	予想高値	予想安値	予想高値	予想安値	StopLoss	Support	Pivot	Resistance	StopLoss	3-days AVG	Support Zone 2	Support Zone 1	BP	Resistance Zone 1	Resistance Zone 2								
													LBOp	S2	S1	PP	R1	R2	HBOP												
2016/10/17	1.0970	1.1008	1.0964	1.1000	44p	陰線引け	-	-	-	-	-	-	1.0929	1.0947	1.0973	1.0991	1.1017	1.1034	1.1061												
2016/10/18	1.0999	1.1026	1.0970	1.0978	56p	陰線引け	1.1026	1.0970	1.1002	1.0946	1.1002	1.0946	1.0901	1.0935	1.0957	1.0992	1.1013	1.1048	1.1069												
2016/10/19	1.0979	1.1005	1.0955	1.0974	50p	陰線引け	1.1005	1.0955	1.0990	1.0940	1.0990	1.0940	1.0902	1.0929	1.0951	1.0978	1.1001	1.1028	1.1051	1.0987	Bear	1.0910	~ 1.0929	1.0947	~ 1.0953	1.0978	1.1003	~ 1.1009	1.1028	~ 1.1047	
2016/10/20	1.0974	1.1039	1.0916	1.0925	123p	陰線引け	1.1039	1.0916	1.0982	1.0859	1.0982	1.0859	1.0758	1.0837	1.0881	1.0960	1.1004	1.1083	1.1127	1.0977	Bear	1.0790	~ 1.0837	1.0884	~ 1.0898	1.0960	1.1021	~ 1.1036	1.1083	~ 1.1130	
2016/10/21	1.0925	1.0930	1.0860	1.0880	70p	陰線引け	1.0930	1.0860	1.0905	1.0835	1.0905	1.0835	1.0780	1.0820	1.0850	1.0890	1.0920	1.0960	1.0990	1.0943	Bear	1.0793	~ 1.0820	1.0847	~ 1.0855	1.0890	1.0925	~ 1.0933	1.1063	~ 1.0987	
週足	Open	High	Low	Close	値幅/週	引け形態	真の高値	真の安値	予想高値	予想安値	予想高値	予想安値	LBOp	S2	S1	PP	R1	R2	HBOP	3-days AVG	Support Zone 2	Support Zone 1	BP	Resistance Zone 1	Resistance Zone 2						
2016/09/26 ~ 2016/09/30	1.1229	1.1279	1.1154	1.1233	126p	陰線引け	-	-	-	-	-	-	1.1039	1.1096	1.1165	1.1222	1.1290	1.1348	1.1416												
2016/10/03 ~ 2016/10/07	1.1241	1.1244	1.1105	1.1199	139p	陰線引け	1.1244	1.1105	1.1221	1.1131	1.1221	1.1082	1.0982	1.1043	1.1121	1.1182	1.1260	1.1321	1.1399												
2016/10/10 ~ 2016/10/14	1.1191	1.1200	1.0971	1.0972	229p	陰線引け	1.1200	1.0971	1.1086	1.0857	1.1086	1.0857	1.0667	1.0819	1.0896	1.1048	1.1125	1.1277	1.1354	1.1151	Bear	1.0731	~ 1.0819	1.0906	~ 1.0933	1.1048	1.1162	~ 1.1189	1.1277	~ 1.1364	
2016/10/17 ~ 2016/10/21	1.0970	1.1039	1.0860	1.0880	179p	陰線引け	1.1039	1.0860	1.0960	1.0780	1.0960	1.0780	1.0634	1.0747	1.0814	1.0926	1.0993	1.1106	1.1172	1.1052	Bear	1.0679	~ 1.0747	1.0816	~ 1.0837	1.0926	1.1016	~ 1.1037	1.1106	~ 1.1174	

GBP/JPY										Demark						Pivot						Fibonacci Zone								
当日のOHLCLから計算される翌日の										TD Range Projection						TD pivot points														
日足	Open	High	Low	Close	値幅/日	引け形態	真の高値	真の安値	予想高値	予想安値	予想高値	予想安値	StopLoss	Support	Pivot	Resistance	StopLoss	3-days AVG	Support Zone 2	Support Zone 1	BP	Resistance Zone 1	Resistance Zone 2							
													LBOp	S2	S1	PP	R1	R2	HBOP											
2016/10/17	127.00	127.02	126.30	126.60	72p	陰線引け	-	-	-	-	-	-	125.53	125.91	126.26	126.64	126.98	127.36	127.70											
2016/10/18	126.61	128.16	126.48	127.80	168p	陰線引け	128.16	126.48	128.82	127.14	128.82	127.14	125.11	125.80	126.80	127.48	128.48	129.16	130.16											
2016/10/19	127.81	127.90	126.62	127.05	127p	陰線引け	127.90	126.62	127.47	126.20	127.47	126.20	125.21	125.92	126.48	127.19	127.75	128.46	129.03	127.10	Bull	125.43	~ 125.92	126.40	~ 126.55	127.19	127.82	~ 127.97	128.46	~ 128.95
2016/10/20	127.05	127.59	126.63	127.38	96p	陰線引け	127.59	126.63	127.97	127.00	127.97	127.00	125.85	126.24	126.81	127.20	127.72	128.16	128.74	127.29	Bear	125.87	~ 126.24	126.60	~ 126.72	127.20	127.68	~ 127.79	128.16	~ 128.53
2016/10/21	127.41	127.68	126.13	126.91	155p	陰線引け	127.68	126.13	127.30	125.75	127.30	125.75	124.58	125.36	126.14	126.91	127.69	128.46	129.24	127.10	Bear	124.77	~ 125.36							

IMM扱い8通貨/ダウ/日経/金/オイル/主要クロス円の過去5日及び過去5週の4本値

AUDUSD					CADUSD					CHFUSD				
Date	Open	High	Low	Close	Date	Open	High	Low	Close	Date	Open	High	Low	Close
2016/10/21	0.7625	0.7651	0.7588	0.7600	2016/10/21	0.7558	0.7561	0.7488	0.7503	2016/10/21	1.0071	1.0077	1.0038	1.0065
2016/10/20	0.7719	0.7734	0.7620	0.7626	2016/10/20	0.7620	0.7622	0.7557	0.7557	2016/10/20	1.0112	1.0157	1.0067	1.0071
2016/10/19	0.7673	0.7729	0.7659	0.7719	2016/10/19	0.7629	0.7689	0.7609	0.7620	2016/10/19	1.0100	1.0126	1.0096	1.0112
2016/10/18	0.7633	0.7690	0.7625	0.7672	2016/10/18	0.7617	0.7660	0.7611	0.7627	2016/10/18	1.0110	1.0135	1.0087	1.0101
2016/10/17	0.7618	0.7642	0.7581	0.7634	2016/10/17	0.7612	0.7622	0.7585	0.7617	2016/10/17	1.0099	1.0130	1.0094	1.0112

CNYUSD					EURUSD					GBPUSD				
Date	Open	High	Low	Close	Date	Open	High	Low	Close	Date	Open	High	Low	Close
2016/10/21	0.1481	0.1481	0.1477	0.1477	2016/10/21	1.0925	1.0930	1.0860	1.0880	2016/10/21	1.2252	1.2260	1.2172	1.2223
2016/10/20	0.1483	0.1483	0.1482	0.1483	2016/10/20	1.0974	1.1039	1.0916	1.0925	2016/10/20	1.2288	1.2299	1.2211	1.2252
2016/10/19	0.1483	0.1484	0.1482	0.1483	2016/10/19	1.0979	1.1005	1.0955	1.0974	2016/10/19	1.2303	1.2330	1.2255	1.2288
2016/10/18	0.1482	0.1483	0.1482	0.1483	2016/10/18	1.0999	1.1026	1.0970	1.0978	2016/10/18	1.2185	1.2325	1.2183	1.2303
2016/10/17	0.1484	0.1484	0.1481	0.1482	2016/10/17	1.0970	1.1008	1.0964	1.1000	2016/10/17	1.2171	1.2202	1.2137	1.2185

JPYUSD					MXNUSD					NZDUSD				
Date	Open	High	Low	Close	Date	Open	High	Low	Close	Date	Open	High	Low	Close
2016/10/21	0.9617	0.9660	0.9597	0.9631	2016/10/21	0.0537	0.0538	0.0534	0.0537	2016/10/21	0.7188	0.7195	0.7144	0.7161
2016/10/20	0.9672	0.9676	0.9606	0.9618	2016/10/20	0.0540	0.0541	0.0536	0.0538	2016/10/20	0.7229	0.7264	0.7182	0.7189
2016/10/19	0.9626	0.9692	0.9620	0.9672	2016/10/19	0.0538	0.0540	0.0536	0.0539	2016/10/19	0.7196	0.7249	0.7192	0.7229
2016/10/18	0.9624	0.9645	0.9597	0.9627	2016/10/18	0.0534	0.0538	0.0533	0.0537	2016/10/18	0.7172	0.7218	0.7161	0.7196
2016/10/17	0.9584	0.9635	0.9581	0.9625	2016/10/17	0.0525	0.0530	0.0525	0.0530	2016/10/17	0.7093	0.7180	0.7078	0.7172

Nikkei 225 - Japonia (NIKKEI)						
Date	Open	High	Low	Close	(ドル建て終値)	出来高
2016/10/21	17283.75	17288.89	17151.98	17184.59	165.49	0 1827501400
2016/10/20	16999.36	17235.50	16992.14	17235.50	166.16	1123954048 1851086400
2016/10/19	16952.91	17016.66	16938.46	16998.91	164.21	1016683712 1561108600
2016/10/18	16862.31	16966.90	16844.17	16963.61	163.14	986431680 1531828100
2016/10/17	16871.84	16954.44	16821.49	16900.12	162.25	951278912 1527031900
週4本値	16871.84	17288.89	16821.49	17184.59	165.49	(N225銘柄計)【東証一部全体計】

XAUUSD					
Date	Open	High	Low	Close	Volume
2016/10/21	1265.80	1267.76	1261.03	1266.81	0
2016/10/20	1269.41	1274.06	1264.68	1265.48	0
2016/10/19	1262.48	1273.14	1260.17	1269.01	0
2016/10/18	1254.95	1264.54	1254.94	1262.49	0
2016/10/17	1251.46	1256.99	1250.18	1255.51	0
週4本値	1251.46	1274.06	1250.18	1266.81	

Dow Jones Industrial - USA (DJIA)					
Date	Open	High	Low	Close	出来高
2016/10/21	18152.63	18168.76	18049.77	18145.71	117821045
2016/10/20	18161.87	18249.05	18129.07	18162.35	88833880
2016/10/19	18178.21	18252.20	18169.25	18202.62	88043000
2016/10/18	18145.06	18225.80	18129.45	18161.94	74800254
2016/10/17	18135.85	18162.28	18063.02	18086.40	75964284
週4本値	18135.85	18252.20	18049.77	18145.71	117821045

Historical Data by **Stooq**
 Historical Data by **MarketNewsline**
 Arrangement by **FX_勝てば官軍?**

Crude Light Oil						
Date	Open	High	Low	Close	Volume	
2016/10/21	50.63	51.01	50.23	50.98	0	
2016/10/20	51.57	51.82	50.45	50.62	1204374	
2016/10/19	50.84	51.92	50.70	51.48	1204374	
2016/10/18	50.06	50.77	49.78	50.75	790741	
2016/10/17	50.16	50.58	49.51	50.07	940461	
週4本値	50.16	51.92	49.51	50.98		

USDJPY					EURJPY					GBPJPY				
日付	始値	高値	安値	終値	日付	始値	高値	安値	終値	日付	始値	高値	安値	終値
2016/10/21	103.99	104.20	103.53	103.83	2016/10/21	113.61	113.84	112.61	112.97	2016/10/21	127.41	127.68	126.13	126.91
2016/10/20	103.39	104.11	103.35	103.97	2016/10/20	113.47	114.51	113.38	113.58	2016/10/20	127.05	127.59	126.63	127.38
2016/10/19	103.89	103.95	103.18	103.39	2016/10/19	114.06	114.16	113.13	113.47	2016/10/19	127.81	127.90	126.62	127.05
2016/10/18	103.91	104.20	103.68	103.87	2016/10/18	114.28	114.68	113.99	114.03	2016/10/18	126.61	128.16	126.48	127.80
2016/10/17	104.35	104.37	103.79	103.90	2016/10/17	114.46	114.58	114.04	114.28	2016/10/17	127.00	127.02	126.30	126.60

USDJPY Weekly					EURJPY Weekly					GBPJPY Weekly				
日付	始値	高値	安値	終値	日付	始値	高値	安値	終値	日付	始値	高値	安値	終値
2016/10/21	104.35	104.37	103.18	103.83	2016/10/21	114.46	114.68	112.61	112.97	2016/10/21	127.00	128.16	126.13	126.91
2016/10/14	103.13	104.63	102.82	104.22	2016/10/14	115.41	115.79	113.92	114.36	2016/10/14	128.23	128.61	124.85	126.87
2016/10/07	101.33	104.16	101.21	102.91	2016/10/07	113.90	116.29	113.64	115.25	2016/10/07	131.16	132.23	123.29	128.02
2016/09/30	101.02	101.84	100.10	101.41	2016/09/30	113.43	114.19	112.25	113.91	2016/09/30	130.99	132.44	129.66	131.45
2016/09/23	102.26	102.78	100.10	101.03	2016/09/23	114.06	114.38	112.08	113.47	2016/09/23	132.99	133.48	130.41	130.98

先週のIMM取り扱い対ドル8通貨チャート

※ 赤点線は週最高値/青天線は週最低値、BB中心線はSMA21

2016/10/17 ~ 2016/10/21

Chart by OANDA Japan MetaTrader4

