

JAPANESE YEN - CHICAGO MERCANTILE EXCHANGE

Code-097741

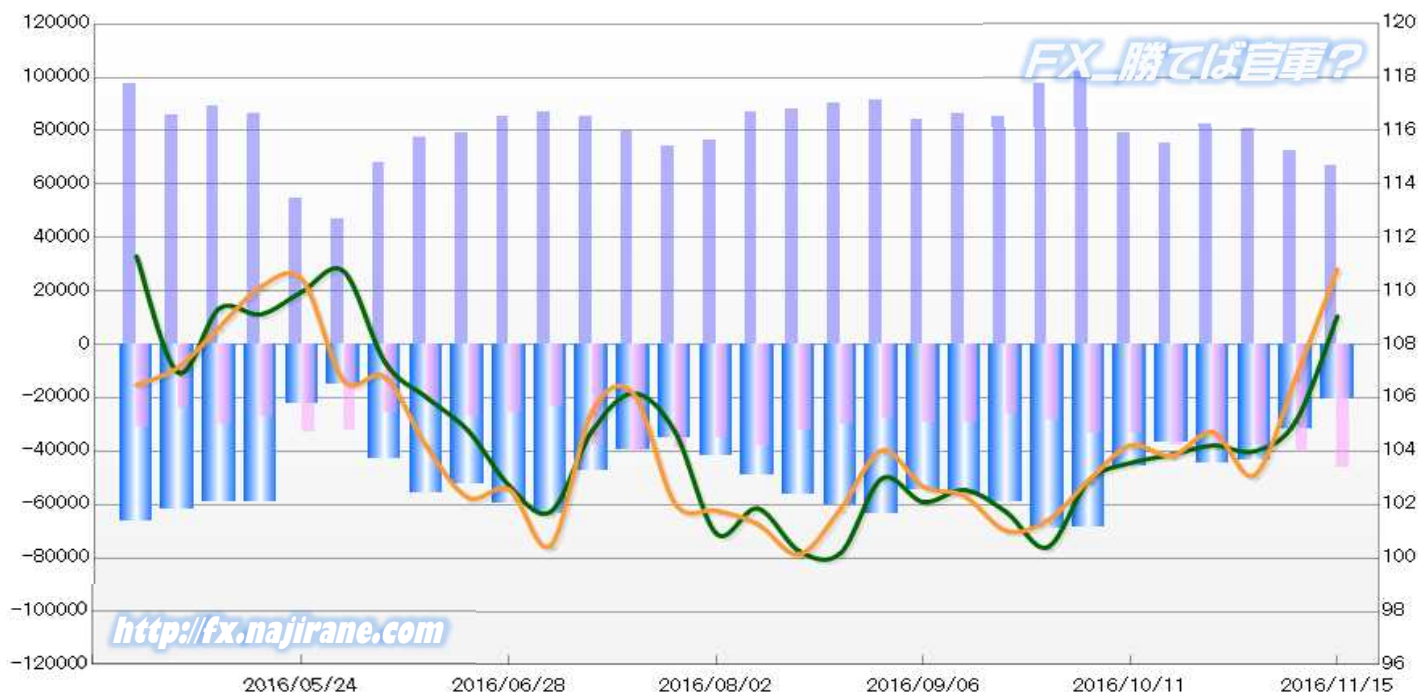
2016/05/24 ~ 2016/11/15

2016/11/18 NYクローズ時公表値

Report_Date	Non Commercial Positions												火曜日 引け値	金曜日 引け値
	Long	増減	増減(%)	Short	増減	増減(%)	売り越し	増減	増減(%)	売買計	増減	増減(%)		
2016/11/15	67085	-5534	-7.6%	46409	5746	14.1%	-20676	-11280	-35.3%	113494	212	0.2%	109.05	110.82
2016/11/08	72619	-8391	-10.4%	40663	2813	7.4%	-31956	-11204	-26.0%	113282	-5578	-4.7%	105.13	106.78
2016/11/01	81010	-1375	-1.7%	37850	60	0.2%	-43160	-1435	-3.2%	118860	-1315	-1.1%	104.00	103.11
2016/10/25	82385	7419	9.9%	37790	-185	-0.5%	-44595	7604	20.6%	120175	7234	6.4%	104.22	104.71
2016/10/18	74966	-4313	-5.4%	37975	4605	13.8%	-36991	-8918	-19.4%	112941	292	0.3%	103.87	103.83
2016/10/11	79279	-22707	-22.3%	33370	79	0.2%	-45909	-22786	-33.2%	112649	-22628	-16.7%	103.56	104.22
2016/10/04	101986	4554	4.7%	33291	4751	16.6%	-68695	-197	-0.3%	135277	9305	7.4%	102.90	102.91
2016/09/27	97432	12315	14.5%	28540	2208	8.4%	-68892	10107	17.2%	125972	14523	13.0%	100.41	101.41
2016/09/20	85117	-1023	-1.2%	26332	-2962	-10.1%	-58785	1939	3.4%	111449	-3985	-3.5%	101.73	101.03
2016/09/13	86140	2172	2.6%	29294	-185	-0.6%	-56846	2357	4.3%	115434	1987	1.8%	102.55	102.32
2016/09/06	83968	-7602	-8.3%	29479	1570	5.6%	-54489	-9172	-14.4%	113447	-6032	-5.0%	102.10	102.68
2016/08/30	91570	1183	1.3%	27909	-2162	-7.2%	-63661	3345	5.5%	119479	-979	-0.8%	102.98	104.03
2016/08/23	90387	2114	2.4%	30071	-2196	-6.8%	-60316	4310	7.7%	120458	-82	-0.1%	100.19	101.84
2016/08/16	88273	1554	1.8%	32267	-5621	-14.8%	-56006	7175	14.7%	120540	-4067	-3.3%	100.27	100.14
2016/08/09	86719	10144	13.2%	37888	3013	8.6%	-48831	7131	17.1%	124607	13157	11.8%	101.86	101.28
2016/08/02	76575	2501	3.4%	34875	-4241	-10.8%	-41700	6742	19.3%	111450	-1740	-1.5%	100.92	101.78
2016/07/26	74074	-5790	-7.2%	39116	-1395	-3.4%	-34958	-4395	-11.2%	113190	-7185	-6.0%	104.74	102.05
2016/07/19	79864	-5500	-6.4%	40511	2692	7.1%	-39353	-8192	-17.2%	120375	-2808	-2.3%	106.17	106.16
2016/07/12	85364	-1673	-1.9%	37819	14350	61.1%	-47545	-16023	-25.2%	123183	12677	11.5%	104.76	105.49
2016/07/05	87037	1544	1.8%	23469	-2274	-8.8%	-63568	3818	6.4%	110506	-730	-0.7%	101.74	100.47
2016/06/28	85493	6095	7.7%	25743	-1359	-5.0%	-59750	7454	14.3%	111236	4736	4.4%	102.71	102.57
2016/06/21	79398	1695	2.2%	27102	5089	23.1%	-52296	-3394	-6.1%	106500	6784	6.8%	104.78	102.27
2016/06/14	77703	9466	13.9%	22013	-3371	-13.3%	-55690	12837	30.0%	99716	6095	6.5%	106.02	104.19
2016/06/07	68237	21273	45.3%	25384	-6743	-21.0%	-42853	28016	188.8%	93621	14530	18.4%	107.33	106.78
2016/05/31	46964	-7828	-14.3%	32127	-606	-1.9%	-14837	-7222	-32.7%	79091	-8434	-9.6%	110.74	106.64
2016/05/24	54792			32733			-22059			87525			109.98	110.42

JAPANESE YEN - CHICAGO MERCANTILE EXCHANGE
FUTURES ONLY POSITIONS

— 金曜終値 — 火曜終値 — Short枚数 — Long枚数 ■ 売り越し枚数(マイナスの場合は買越しと読替え)

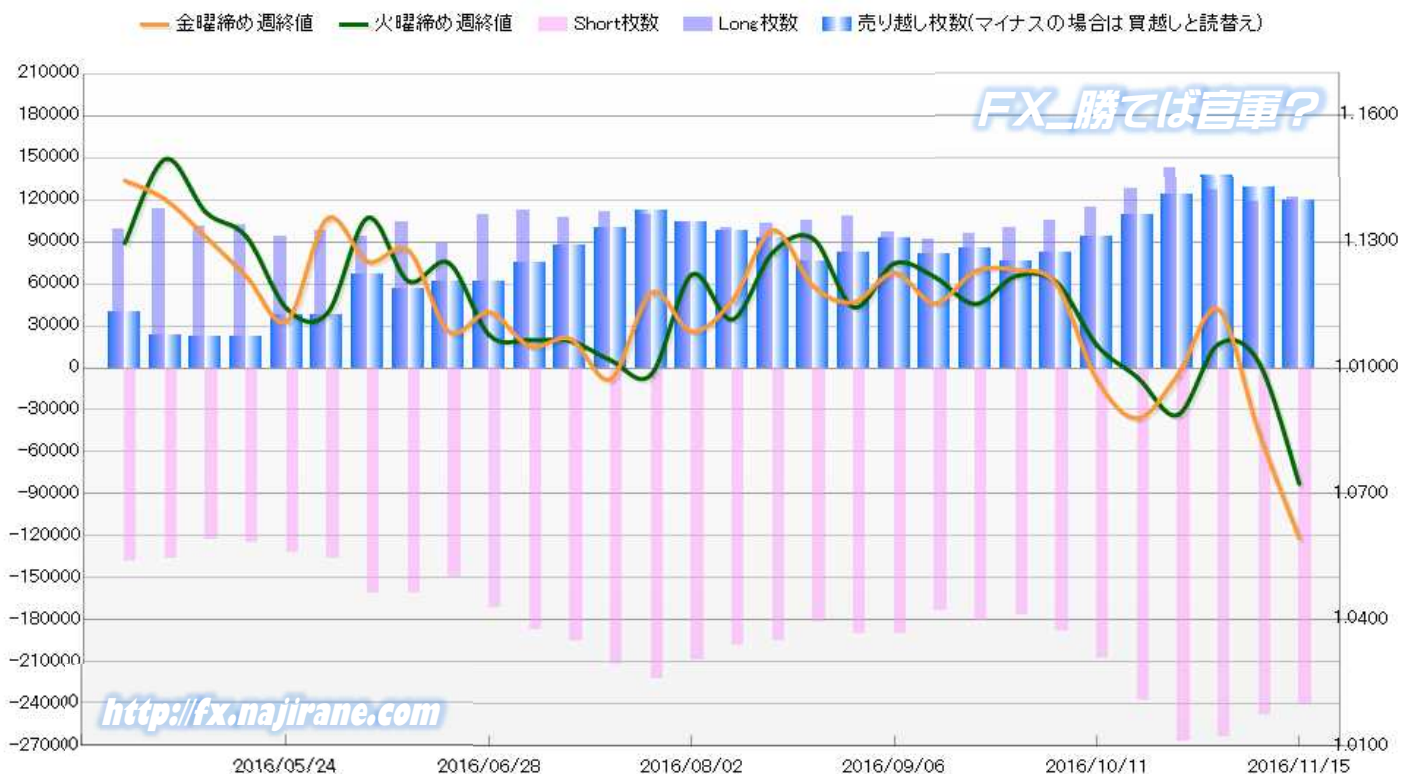


EURO FX - CHICAGO MERCANTILE EXCHANGE
2016/05/24 ~ 2016/11/15

Code-099741
2016/11/18 NYクローズ時公表値

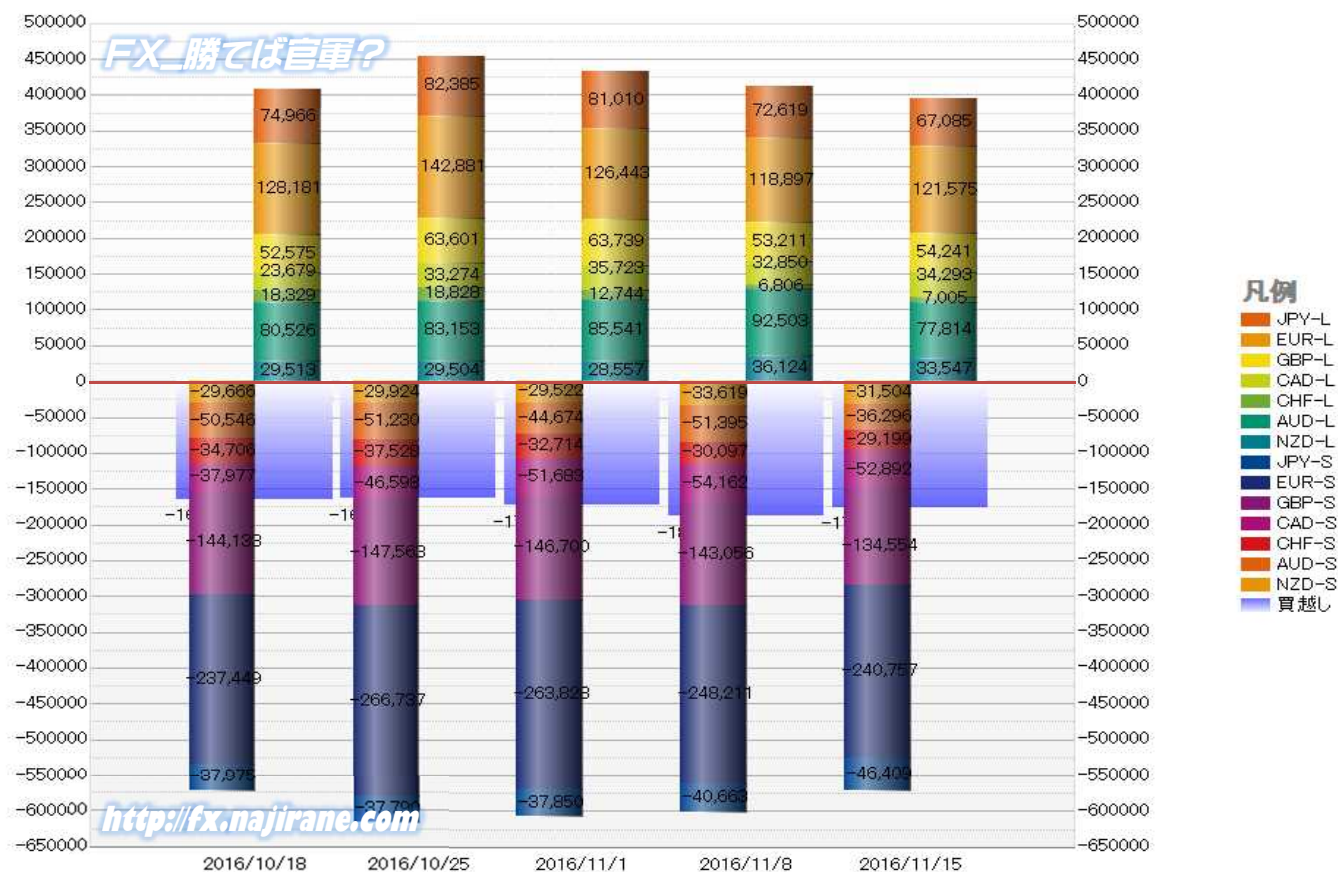
Report_Date	Non Commercial Positions												火曜日 引け値	金曜日 引け値
	Long	増減		Short	増減		売り越し	増減		売買計	増減			
2016/11/15	121575	2678	2.3%	240757	-7454	-3.0%	119182	-10132	-7.8%	362332	-4776	-1.3%	1.0724	1.0595
2016/11/08	118897	-7546	-6.0%	248211	-15617	-5.9%	129314	-8071	-5.9%	367108	-23163	-5.9%	1.1013	1.0847
2016/11/01	126443	-16438	-11.5%	263828	-2909	-1.1%	137385	13529	10.9%	390271	-19347	-4.7%	1.1056	1.1139
2016/10/25	142881	14700	11.5%	266737	29288	12.3%	123856	14588	13.4%	409618	43988	12.0%	1.0889	1.0984
2016/10/18	128181	13897	12.2%	237449	29693	14.3%	109268	15796	16.9%	365630	43590	13.5%	1.0978	1.0880
2016/10/11	114284	8650	8.2%	207756	20063	10.7%	93472	11413	13.9%	322040	28713	9.8%	1.1054	1.0972
2016/10/04	105634	5142	5.1%	187693	11171	6.3%	82059	6029	7.9%	293327	16313	5.9%	1.1204	1.1199
2016/09/27	100492	4794	5.0%	176522	-4201	-2.3%	76030	-8995	-10.6%	277014	593	0.2%	1.1219	1.1233
2016/09/20	95698	3915	4.3%	180723	7465	4.3%	85025	3550	4.4%	276421	11380	4.3%	1.1152	1.1230
2016/09/13	91783	-5541	-5.7%	173258	-16696	-8.8%	81475	-11155	-12.0%	265041	-22237	-7.7%	1.1217	1.1154
2016/09/06	97324	-10937	-10.1%	189954	-232	-0.1%	92630	10705	13.1%	287278	-11169	-3.7%	1.1249	1.1226
2016/08/30	108261	2887	2.7%	190186	8154	4.5%	81925	5267	6.9%	298447	11041	3.8%	1.1144	1.1157
2016/08/23	105374	2314	2.2%	182032	-13536	-6.9%	76658	-15850	-17.1%	287406	-11222	-3.8%	1.1308	1.1195
2016/08/16	103060	2618	2.6%	195568	-3273	-1.6%	92508	-5891	-6.0%	298628	-655	-0.2%	1.1275	1.1328
2016/08/09	100442	-4074	-3.9%	198841	-9778	-4.7%	98399	-5704	-5.5%	299283	-13852	-4.4%	1.1115	1.1161
2016/08/02	104516	-4677	-4.3%	208619	-13174	-5.9%	104103	-8497	-7.5%	313135	-17851	-5.4%	1.1222	1.1087
2016/07/26	109193	-2385	-2.1%	221793	10324	4.9%	112600	12709	12.7%	330986	7939	2.5%	1.0985	1.1179
2016/07/19	111578	3943	3.7%	211469	16174	8.3%	99891	12231	14.0%	323047	20117	6.6%	1.1018	1.0974
2016/07/12	107635	-4376	-3.9%	195295	7957	4.2%	87660	12333	16.4%	302930	3581	1.2%	1.1065	1.1069
2016/07/05	112011	2431	2.2%	187338	15824	9.2%	75327	13393	21.6%	299349	18255	6.5%	1.1066	1.1052
2016/06/28	109580	20941	23.6%	171514	21529	14.4%	61934	588	1.0%	281094	42470	17.8%	1.1078	1.1132
2016/06/21	88639	-15871	-15.2%	149985	-11014	-6.8%	61346	4857	8.6%	238624	-26885	-10.1%	1.1250	1.1087
2016/06/14	104510	11018	11.8%	160999	395	0.2%	56489	-10623	-15.8%	265509	11413	4.5%	1.1207	1.1280
2016/06/07	93492	-4726	-4.8%	160604	24732	18.2%	67112	29458	78.2%	254096	20006	8.5%	1.1357	1.1253
2016/05/31	98218	4263	4.5%	135872	4022	3.1%	37654	-241	-0.6%	234090	8285	3.7%	1.1130	1.1356
2016/05/24	93955			131850			37895			225805			1.1141	1.1111

EURO FX - CHICAGO MERCANTILE EXCHANGE
FUTURES ONLY POSITIONS



	2016/10/18			2016/10/25			2016/11/01			2016/11/08			2016/11/15		
	Long	Short	売り越し	Long	Short	売り越し	Long	Short	売り越し	Long	Short	売り越し	Long	Short	売り越し
JPY	74966	37975	-36991	82385	37790	-44595	81010	37850	-43160	72619	40663	-31956	67085	46409	-20676
	前週比 枚数増減 (枚)			7419	-185	7604	-1375	60	-1435	-8391	2813	-11204	-5534	5746	-11280
	前週比 枚数増減 (%)			9.90%	-0.49%	20.56%	-1.67%	0.16%	-3.22%	-10.36%	7.43%	-25.96%	-7.62%	14.13%	-35.30%
EUR	128181	237449	109268	142881	266737	123856	126443	263828	137385	118897	248211	129314	121575	240757	119182
	前週比 枚数増減 (枚)			14700	29288	14588	-16438	-2909	13529	-7546	-15617	-8071	2678	-7454	-10132
	前週比 枚数増減 (%)			11.47%	12.33%	13.35%	-11.50%	-1.09%	10.92%	-5.97%	-5.92%	-5.87%	2.25%	-3.00%	-7.84%
GBP	52575	144133	91558	63601	147563	83962	63739	146700	82961	53211	143056	89845	54241	134554	80313
	前週比 枚数増減 (枚)			11026	3430	-7596	138	-863	-1001	-10528	-3644	6884	1030	-8502	-9532
	前週比 枚数増減 (%)			20.97%	2.38%	-8.30%	0.22%	-0.58%	-1.19%	-16.52%	-2.48%	8.30%	1.94%	-5.94%	-10.61%
AUD	80526	50546	-29980	83153	51230	-31923	85541	44674	-40867	92503	51395	-41108	77814	36296	-41518
	前週比 枚数増減 (枚)			2627	684	1943	2388	-6556	8944	6962	6721	241	-14689	-15099	410
	前週比 枚数増減 (%)			3.26%	1.35%	6.48%	2.87%	-12.80%	28.02%	8.14%	15.04%	0.59%	-15.88%	-29.38%	1.00%
CAD	23679	37977	14298	33274	46598	13324	35723	51683	15960	32850	54162	21312	34293	52892	18599
	前週比 枚数増減 (枚)			9595	8621	-974	2449	5085	2636	-2873	2479	5352	1443	-1270	-2713
	前週比 枚数増減 (%)			40.52%	22.70%	-6.81%	7.36%	10.91%	19.78%	-8.04%	4.80%	33.53%	4.39%	-2.34%	-12.73%
CHF	18329	34706	16377	18828	37528	18700	12744	32714	19970	6806	30097	23291	7005	29199	22194
	前週比 枚数増減 (枚)			499	2822	2323	-6084	-4814	1270	-5938	-2617	3321	199	-898	-1097
	前週比 枚数増減 (%)			2.72%	8.13%	14.18%	-32.31%	-12.83%	6.79%	-46.59%	-8.00%	16.63%	2.92%	-2.98%	-4.71%
NZD	29513	29666	153	29504	29924	420	28557	29522	965	36124	33619	-2505	33547	31504	-2043
	前週比 枚数増減 (枚)			-9	258	267	-947	-402	545	7567	4097	1540	-2577	-2115	-462
	前週比 枚数増減 (%)			-0.03%	0.87%	174.51%	-3.21%	-1.34%	129.76%	26.50%	13.88%	-359.59%	-7.13%	-6.29%	-18.44%
MXN	33364	64083	30719	28677	54020	25343	30838	67310	36472	25298	58294	32996	22124	67277	45153
	前週比 枚数増減 (枚)			-4687	-10063	-5376	2161	13290	11129	-5540	-9016	-3476	-3174	8983	12157
	前週比 枚数増減 (%)			-14.05%	-15.70%	-17.50%	7.54%	24.60%	43.91%	-17.96%	-13.39%	-9.53%	-12.55%	15.41%	36.84%
Total All 8	441133	636535	195402	482303	671390	189087	464595	674281	209686	438308	659497	221189	417684	638888	221204
	前週比 枚数増減 (枚)			41170	34855	-6315	-17708	2891	20599	-26287	-14784	11503	-20624	-20609	15
	前週比 枚数増減 (%)			9.33%	5.48%	-3.23%	-3.67%	0.43%	10.89%	-5.66%	-2.19%	5.49%	-4.71%	-3.12%	0.01%
Total 7 (MXN除く)	407769	572452	164683	453626	617370	163744	433757	606971	173214	413010	601203	188193	395560	571611	176051
	前週比 枚数増減 (枚)			45857	44918	-939	-19869	-10399	9470	-20747	-5768	14979	-17450	-29592	-12142
	前週比 枚数増減 (%)			11.2%	7.8%	-0.6%	-4.4%	-1.7%	5.8%	-4.8%	-1.0%	8.6%	-4.2%	-4.9%	-6.5%

直近5週 CFTC IMM主要7通貨の構成

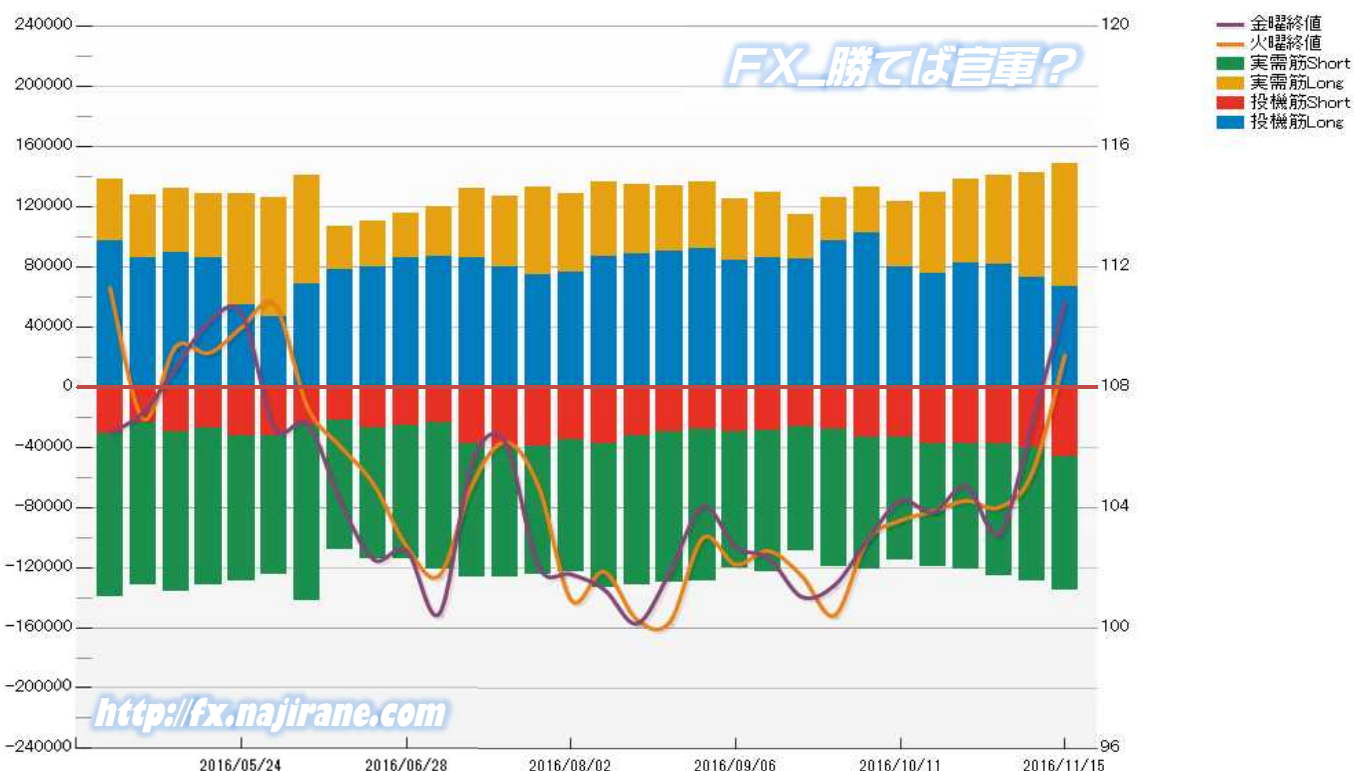


JAPANESE YEN - CHICAGO MERCANTILE EXCHANGE
FUTURES ONLY POSITIONS

Code-097741
2016/11/18 公表値

Date	投機筋集計				実需筋集計				投機筋+実需筋合計				ドル円終値	
	円買い	円売り	売り越し	売買計	円買い	円売り	売り越し	売買計	円買い	円売り	売り越し	売買計	火曜締め	金曜締め
2016/11/15	67085	46409	-20676	113494	81503	88408	6905	169911	148588	134817	-13771	283405	109.05	110.82
2016/11/08	72619	40663	-31956	113282	69838	88139	18301	157977	142457	128802	-13655	271259	105.13	106.78
2016/11/01	81010	37850	-43160	118860	59272	87511	28239	146783	140282	125361	-14921	265643	104.00	103.11
2016/10/25	82385	37790	-44595	120175	55555	83712	28157	139267	137940	121502	-16438	259442	104.22	104.71
2016/10/18	74966	37975	-36991	112941	54359	81884	27525	136243	129325	119859	-9466	249184	103.87	103.83
2016/10/11	79279	33370	-45909	112649	43806	81544	37738	125350	123085	114914	-8171	237999	103.56	104.22
2016/10/04	101986	33291	-68695	135277	30627	87820	57193	118447	132613	121111	-11502	253724	102.90	102.91
2016/09/27	97432	28540	-68892	125972	28326	90589	62263	118915	125758	119129	-6629	244887	100.41	101.41
2016/09/20	85117	26332	-58785	111449	29715	83021	53306	112736	114832	109353	-5479	224185	101.73	101.03
2016/09/13	86140	29294	-56846	115434	43492	93700	50208	137192	129632	122994	-6638	252626	102.55	102.32
2016/09/06	83968	29479	-54489	113447	41120	91024	49904	132144	125088	120503	-4585	245591	102.10	102.68
2016/08/30	91570	27909	-63661	119479	44366	101570	57204	145936	135936	129479	-6457	265415	102.98	104.03
2016/08/23	90387	30071	-60316	120458	43245	99482	56237	142727	133632	129553	-4079	263185	100.19	101.84
2016/08/16	88273	32267	-56006	120540	46280	99196	52916	145476	134553	131463	-3090	266016	100.27	100.14
2016/08/09	86719	37888	-48831	124607	49619	95343	45724	144962	136338	133231	-3107	269569	101.86	101.28
2016/08/02	76575	34875	-41700	111450	51707	88074	36367	139781	128282	122949	-5333	251231	100.92	101.78
2016/07/26	74074	39116	-34958	113190	58947	85458	26511	144405	133021	124574	-8447	257595	104.74	102.05
2016/07/19	79864	40511	-39353	120375	46993	85719	38726	132712	126857	126230	-627	253087	106.17	106.16
2016/07/12	85364	37819	-47545	123183	46842	88850	42008	135692	132206	126669	-5537	258875	104.76	105.49
2016/07/05	87037	23469	-63568	110506	32637	97652	65015	130289	119674	121121	1447	240795	101.74	100.47
2016/06/28	85493	25743	-59750	111236	30249	88316	58067	118565	115742	114059	-1683	229801	102.71	102.57
2016/06/21	79398	27102	-52296	106500	30450	86992	56542	117442	109848	114094	4246	223942	104.78	102.27
2016/06/14	77703	22013	-55690	99716	28678	86062	57384	114740	106381	108075	1694	214456	106.02	104.19
2016/06/07	68237	25384	-42853	93621	72616	116477	43861	189093	140853	141861	1008	282714	107.33	106.78
2016/05/31	46964	32127	-14837	79091	78749	92275	13526	171024	125713	124402	-1311	250115	110.74	106.64
2016/05/24	54792	32733	-22059	87525	73603	96638	23035	170241	128395	129371	976	257766	109.98	110.42
2016/05/17	86165	27246	-58919	113411	41969	104408	62439	146377	128134	131654	3520	259788	109.13	110.16
2016/05/10	88897	29850	-59047	118747	43309	106603	63294	149912	132206	136453	4247	268659	109.35	108.65
2016/05/03	85627	24106	-61521	109733	41904	107399	65495	149303	127531	131505	3974	259036	106.95	107.14
2016/04/26	97470	30972	-66498	128442	40734	108419	67685	149153	138204	139391	1187	277595	111.30	106.48

JAPANESE YEN - CHICAGO MERCANTILE EXCHANGE
FUTURES ONLY POSITIONS Code-097741

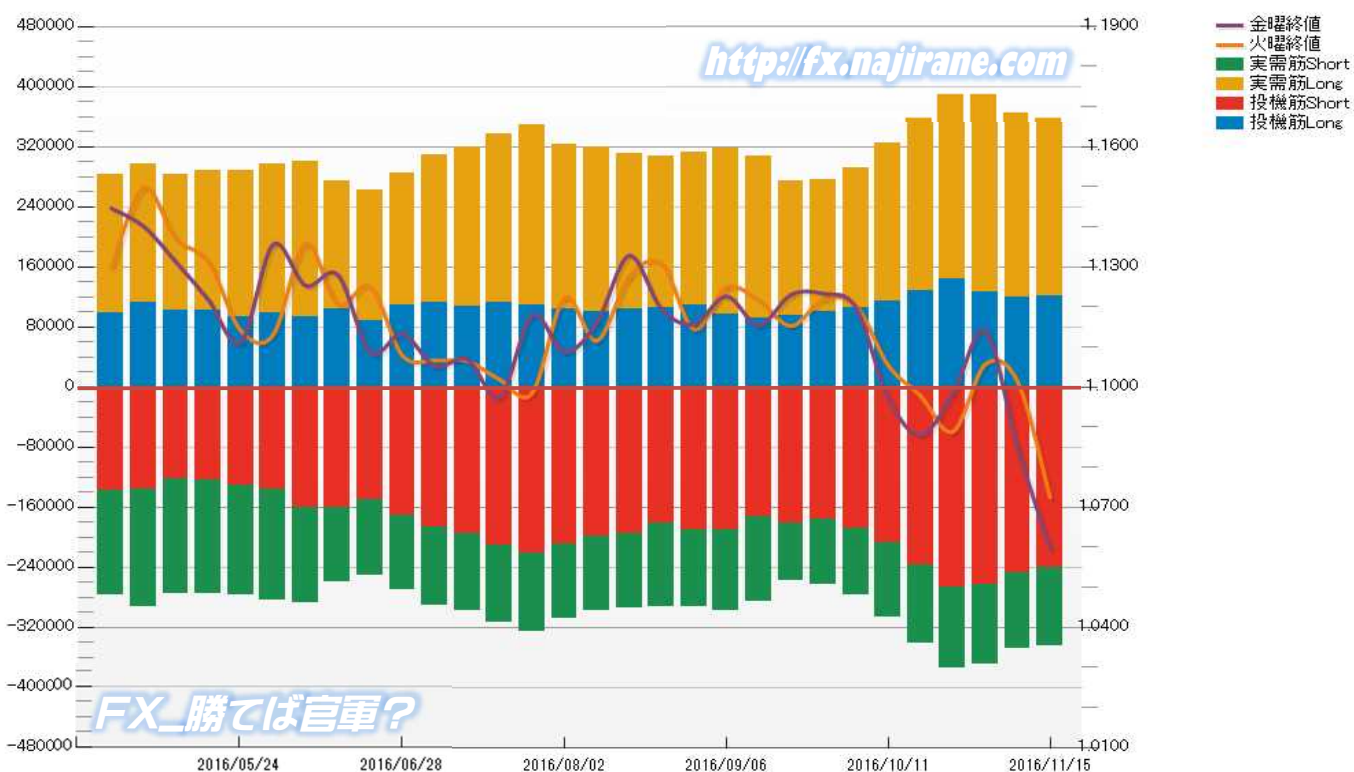


**EURO FX - CHICAGO MERCANTILE EXCHANGE
FUTURES ONLY POSITIONS**

**Code-099741
2016/11/18 公表値**

Date	投机筋集計				実需筋集計				投机筋+実需筋合計				ユーロドル終値	
	EUR買い	EUR売り	売り越し	売買計	EUR買い	EUR売り	売り越し	売買計	EUR買い	EUR売り	売り越し	売買計	火曜締め	金曜締め
2016/11/15	121575	240757	119182	362332	235596	104624	-130972	340220	357171	345381	-11790	702552	1.0724	1.0595
2016/11/08	118897	248211	129314	367108	245616	101035	-144581	346651	364513	349246	-15267	713759	1.1013	1.0847
2016/11/01	126443	263828	137385	390271	261922	105533	-156389	367455	388365	369361	-19004	757726	1.1056	1.1139
2016/10/25	142881	266737	123856	409618	246230	108147	-138083	354377	389111	374884	-14227	763995	1.0889	1.0984
2016/10/18	128181	237449	109268	365630	230197	104790	-125407	334987	358378	342239	-16139	700617	1.0978	1.0880
2016/10/11	114284	207756	93472	322040	209879	99131	-110748	309010	324163	306887	-17276	631050	1.1054	1.0972
2016/10/04	105634	187693	82059	293327	186827	89483	-97344	276310	292461	277176	-15285	569637	1.1204	1.1199
2016/09/27	100492	176522	76030	277014	174828	86986	-87842	261814	275320	263508	-11812	538828	1.1219	1.1233
2016/09/20	95698	180723	85025	276421	177910	77967	-99943	255877	273608	258690	-14918	532298	1.1152	1.1230
2016/09/13	91783	173258	81475	265041	216048	112825	-103223	328873	307831	286083	-21748	593914	1.1217	1.1154
2016/09/06	97324	189954	92630	287278	220781	107441	-113340	328222	318105	297395	-20710	615500	1.1249	1.1226
2016/08/30	108261	190186	81925	298447	204241	103433	-100808	307674	312502	293619	-18883	606121	1.1144	1.1157
2016/08/23	105374	182032	76658	287406	202180	111006	-91174	313186	307554	293038	-14516	600592	1.1308	1.1195
2016/08/16	103060	195568	92508	298628	208203	99798	-108405	308001	311263	295366	-15897	606629	1.1275	1.1328
2016/08/09	100442	198841	98399	299283	218984	99470	-119514	318454	319426	298311	-21115	617737	1.1115	1.1161
2016/08/02	104516	208619	104103	313135	218778	99452	-119326	318230	323294	308071	-15223	631365	1.1222	1.1087
2016/07/26	109193	221793	112600	330986	239073	103338	-135735	342411	348266	325131	-23135	673397	1.0985	1.1179
2016/07/19	111578	211469	99891	323047	225909	101654	-124255	327563	337487	313123	-24364	650610	1.1018	1.0974
2016/07/12	107635	195295	87660	302930	211520	103371	-108149	314891	319155	298666	-20489	617821	1.1065	1.1069
2016/07/05	112011	187338	75327	299349	197845	104095	-93750	301940	309856	291433	-18423	601289	1.1066	1.1052
2016/06/28	109580	171514	61934	281094	175747	99094	-76653	274841	285327	270608	-14719	555935	1.1078	1.1132
2016/06/21	88639	149985	61346	238624	174231	100833	-73398	275064	262870	250818	-12052	513688	1.1250	1.1087
2016/06/14	104510	160999	56489	265509	168953	98248	-70705	267201	273463	259247	-14216	532710	1.1207	1.1280
2016/06/07	93492	160604	67112	254096	207448	127910	-79538	335358	300940	288514	-12426	589454	1.1357	1.1253
2016/05/31	98218	135872	37654	234090	198726	148012	-50714	346738	296944	283884	-13060	580828	1.1130	1.1356
2016/05/24	93955	131850	37895	225805	193758	145257	-48501	339015	287713	277107	-10606	564820	1.1141	1.1111
2016/05/17	101723	124310	22587	226033	186065	151949	-34116	338014	287788	276259	-11529	564047	1.1313	1.1218
2016/05/10	101277	123149	21872	224426	181863	152379	-29484	334242	283140	275528	-7612	558668	1.1371	1.1312
2016/05/03	113034	136653	23619	249687	184524	156966	-27558	341490	297558	293619	-3939	591177	1.1497	1.1401
2016/04/26	99072	138739	39667	237811	182996	138270	-44726	321266	282068	277009	-5059	559077	1.1297	1.1446

**EURO FX - CHICAGO MERCANTILE EXCHANGE
FUTURES ONLY POSITIONS Code-099741**



CME Daily Volume

シカゴ・マーカントイル取引所 取扱高日次データ

FX_勝てば官軍?

<http://fx.najirane.com>

EU Euro	取扱高			当日含む前5営業日計			参考レート	
	CALL	PUT	FUTURE	CALL	PUT	FUTURE	Open	Close
2016/11/17 (木)	20527	27309	228323	73212	87968	1105327	1.0701	1.0626
2016/11/16 (水)	15152	15054	225398	64197	70651	1113889	1.0724	1.0701
2016/11/15 (火)	11585	15210	215208	71085	73468	1349079	1.0744	1.0724
2016/11/14 (月)	17189	18050	250433	69020	66458	1261044	1.0839	1.0744
2016/11/11 (金)	8759	12345	185965	65147	61345	1162103	1.0886	1.0847
2016/11/10 (木)	11512	9992	236885	77646	65261	1131795	1.0921	1.0886
2016/11/9 (水)	22040	17871	460588	92187	64696	1066518	1.1013	1.0920
2016/11/8 (火)	9520	8200	127173	92609	60888	812609	1.1043	1.1013
2016/11/7 (月)	13316	12937	151492	100400	65455	858124	1.1085	1.1043
2016/11/4 (金)	21258	16261	155657	94895	60620	829182	1.1107	1.1139

AUS Dollar	取扱高			当日含む前5営業日計			参考レート	
	CALL	PUT	FUTURE	CALL	PUT	FUTURE	Open	Close
2016/11/17 (木)	2735	1574	113639	9656	15361	571017	0.7492	0.7407
2016/11/16 (水)	2138	4146	122475	9267	16139	630355	0.7556	0.7493
2016/11/15 (火)	1859	1779	107346	11634	13503	767707	0.7563	0.7554
2016/11/14 (月)	1570	2472	99905	13743	12801	736867	0.7548	0.7562
2016/11/11 (金)	1354	5390	127652	14769	11068	710315	0.7612	0.7544
2016/11/10 (木)	2346	2352	172977	17464	8350	664002	0.7644	0.7612
2016/11/9 (水)	4505	1510	259827	16573	7554	565911	0.7741	0.7645
2016/11/8 (火)	3968	1077	76506	12899	7239	389679	0.7720	0.7741
2016/11/7 (月)	2596	739	73353	11246	8829	419210	0.7669	0.7720
2016/11/4 (金)	4049	2672	81339	9731	10789	405226	0.7681	0.7675

CHE Franc	取扱高			当日含む前5営業日計			参考レート	
	CALL	PUT	FUTURE	CALL	PUT	FUTURE	Open	Close
2016/11/17 (木)	99	0	200	435	0	1703	0.9983	0.9931
2016/11/16 (水)	25	0	177	428	0	1587	0.9987	0.9984
2016/11/15 (火)	166	0	462	535	0	1606	1.0027	0.9986
2016/11/14 (月)	50	0	602	404	0	1182	1.0112	1.0027
2016/11/11 (金)	95	0	262	450	0	696	1.0127	1.0119
2016/11/10 (木)	92	0	84	360	0	469	1.0163	1.0131
2016/11/9 (水)	132	0	196	927	0	454	1.0213	1.0160
2016/11/8 (火)	35	0	38	1116	0	368	1.0264	1.0213
2016/11/7 (月)	96	0	116	1494	0	541	1.0263	1.0264
2016/11/4 (金)	5	0	35	1405	0	427	1.0267	1.0328

JPN Yen	取扱高			当日含む前5営業日計			参考レート	
	CALL	PUT	FUTURE	CALL	PUT	FUTURE	Open	Close
2016/11/17 (木)	3358	10959	157311	21043	44844	800269	108.88	110.22
2016/11/16 (水)	4279	8941	139851	24215	42177	920728	109.04	108.88
2016/11/15 (火)	4760	11149	161311	28378	40360	1363737	108.29	109.05
2016/11/14 (月)	6418	10468	185367	28597	32868	1311305	106.83	108.29
2016/11/11 (金)	2228	3327	156429	25460	28679	1242363	106.79	106.78
2016/11/10 (木)	6530	8292	277770	27892	29807	1211739	105.66	106.79
2016/11/9 (水)	8442	7124	582860	46336	26443	1056997	105.12	105.66
2016/11/8 (火)	4979	3657	108879	51240	25999	622128	104.54	105.13
2016/11/7 (月)	3281	6279	116425	52113	27580	655972	103.86	104.53
2016/11/4 (金)	4660	4455	125805	50522	23281	627387	102.91	103.11

CAN Dollar	取扱高			当日含む前5営業日計			参考レート	
	CALL	PUT	FUTURE	CALL	PUT	FUTURE	Open	Close
2016/11/17 (木)	854	1046	66616	6618	7572	378236	0.7443	0.7394
2016/11/16 (水)	1196	1231	70716	7358	8102	400208	0.7432	0.7442
2016/11/15 (火)	1027	985	74861	7399	7678	476540	0.7382	0.7432
2016/11/14 (月)	1474	1439	77713	6813	7356	454813	0.7397	0.7382
2016/11/11 (金)	2067	2871	88330	6380	7354	433719	0.7424	0.7382
2016/11/10 (木)	1594	1576	88588	6670	7198	434507	0.7455	0.7424
2016/11/9 (水)	1237	807	147048	5901	6507	396794	0.7524	0.7455
2016/11/8 (火)	441	663	53134	5839	7671	321268	0.7479	0.7524
2016/11/7 (月)	1041	1437	56619	6836	8573	346618	0.7482	0.7479
2016/11/4 (金)	2357	2715	89118	6692	8452	347197	0.7465	0.7463

NZL Dollar	取扱高			当日含む前5営業日計			参考レート	
	CALL	PUT	FUTURE	CALL	PUT	FUTURE	Open	Close
2016/11/17 (木)	0	0	27837	0	0	135266	0.7084	0.7023
2016/11/16 (水)	0	0	25074	0	0	141764	0.7099	0.7084
2016/11/15 (火)	0	0	31811	0	0	162909	0.7118	0.7099
2016/11/14 (月)	0	0	23261	0	0	158023	0.7131	0.7118
2016/11/11 (金)	0	0	33781	0	0	147250	0.7214	0.7121
2016/11/10 (木)	0	0	48982	0	0	146557	0.7288	0.7215
2016/11/9 (水)	0	0	20188	0	0	140054	0.7363	0.7287
2016/11/8 (火)	0	0	21038	0	0	122954	0.7345	0.7363
2016/11/7 (月)	0	0	22568	0	0	131599	0.7327	0.7345
2016/11/4 (金)	0	0	27278	0	0	125703	0.7329	0.7328

MEX Peso	取扱高			当日含む前5営業日計			参考レート	
	CALL	PUT	FUTURE	CALL	PUT	FUTURE	Open	Close
2016/11/17 (木)	168	472	52353	654	1443	362671	4.9485	4.9036
2016/11/16 (水)	7	64	50212	632	1284	418602	4.9036	4.9328
2016/11/15 (火)	189	107	55510	958	2700	590438	4.8973	4.9451
2016/11/14 (月)	213	193	80185	949	2898	607034	4.7684	4.8422
2016/11/11 (金)	77	607	124411	847	3176	589846	4.7835	4.8180
2016/11/10 (木)	146	313	108284	967	2592	538537	5.0088	4.8473
2016/11/9 (水)	333	1480	222048	1295	2379	495607	5.0295	5.0529
2016/11/8 (火)	180	305	72106	1126	1481	346278	5.3713	5.4241
2016/11/7 (月)	111	471	62997	1477	1737	356518	5.3549	5.3643
2016/11/4 (金)	197	23	73102	1414	1345	338922	5.1960	5.2567

過去5日及び過去4週の4本値と各種ピボット

2016/11/14 ~ 2016/11/18

USD/JPY										Demark						Pivot					Fibonacci Zone				
当日のOHLCLから計算される翌日の										TD Range Projection						TD pivot points									
日足	Open	High	Low	Close	値幅/日	引け形態	真の高値	真の安値	予想高値	予想安値	予想高値	予想安値	StopLoss	Support	Pivot	Resistance	StopLoss	3-days AVG	Support Zone 2	Support Zone 1	BP	Resistance Zone 1	Resistance Zone 2		
													LBOP	S2	S1	PP	R1	R2	HBOP						
2016/11/14	106.83	108.54	106.74	108.29	180p	陽線引け	-	-	-	-	-	-	105.38	106.06	107.18	107.86	108.98	109.66	110.78						
2016/11/15	108.29	109.34	107.78	109.05	156p	陽線引け	109.34	107.78	109.97	108.41	109.97	108.41	106.55	107.16	108.10	108.72	109.66	110.28	111.22						
2016/11/16	109.04	109.76	108.80	108.88	95p	陰線引け	109.76	108.80	109.32	108.36	109.32	108.36	107.58	108.19	108.54	109.15	109.49	110.10	110.44	108.57	Bull	107.83	~ 108.19	108.56	~ 108.67
2016/11/17	108.88	110.34	108.56	110.22	178p	陽線引け	110.34	108.56	111.17	109.39	111.17	109.39	107.30	107.93	109.08	109.71	110.85	111.48	112.63	109.19	Bull	107.25	~ 107.93	108.61	~ 108.82
2016/11/18	110.21	110.92	109.81	110.82	111p	陽線引け	110.92	109.81	111.43	110.31	111.43	110.31	109.00	109.40	110.11	110.52	111.23	111.63	112.34	109.79	Bull	108.98	~ 109.40	109.83	~ 109.96
週足	Open	High	Low	Close	値幅/週	引け形態	真の高値	真の安値	予想高値	予想安値	予想高値	予想安値	LBOP	S2	S1	PP	R1	R2	HBOP	3-days AVG	Support Zone 2	Support Zone 1	BP	Resistance Zone 1	Resistance Zone 2
2016/10/24 ~ 2016/10/28	103.85	105.53	103.72	104.71	180p	陽線引け	-	-	-	-	-	-	101.98	102.85	103.78	104.66	105.59	106.46	107.39						
2016/10/31 ~ 2016/11/04	104.62	105.23	102.55	103.11	268p	陰線引け	105.23	103.11	104.17	102.04	104.17	102.04	99.35	100.95	102.03	103.63	104.71	106.31	107.39						
2016/11/07 ~ 2016/11/11	103.86	106.95	101.17	106.78	578p	陽線引け	106.95	101.17	109.75	103.97	109.75	103.97	97.20	99.18	102.98	104.96	108.76	110.75	114.54	104.42	Bull	96.98	~ 99.18	101.39	~ 102.07
2016/11/14 ~ 2016/11/18	106.83	110.92	106.74	110.82	418p	陽線引け	110.92	106.74	112.96	108.78	112.96	108.78	103.89	105.32	108.07	109.49	112.25	113.67	116.42	106.03	Bull	103.72	~ 105.32	106.91	~ 107.41

EUR/JPY										Demark						Pivot					Fibonacci Zone				
当日のOHLCLから計算される翌日の										TD Range Projection						TD pivot points									
日足	Open	High	Low	Close	値幅/日	引け形態	真の高値	真の安値	予想高値	予想安値	予想高値	予想安値	StopLoss	Support	Pivot	Resistance	StopLoss	3-days AVG	Support Zone 2	Support Zone 1	BP	Resistance Zone 1	Resistance Zone 2		
													LBOP	S2	S1	PP	R1	R2	HBOP						
2016/11/14	115.78	116.51	115.55	116.35	96p	陽線引け	-	-	-	-	-	-	114.80	115.18	115.76	116.14	116.72	117.10	117.68						
2016/11/15	116.35	117.22	116.09	116.94	113p	陽線引け	117.22	116.09	117.65	116.51	117.65	116.51	115.14	115.62	116.28	116.75	117.41	117.88	118.55						
2016/11/16	116.94	117.48	116.43	116.51	106p	陰線引け	117.48	116.43	117.00	115.94	117.00	115.94	115.07	115.75	116.13	116.81	117.19	117.86	118.24	116.56	Bull	115.35	~ 115.75	116.15	~ 116.28
2016/11/17	116.51	117.23	116.26	117.12	96p	陽線引け	117.23	116.26	117.66	116.69	117.66	116.69	115.55	115.91	116.51	116.87	117.48	117.83	118.44	116.81	Bull	115.54	~ 115.91	116.27	~ 116.39
2016/11/18	117.12	117.47	116.77	117.41	70p	陽線引け	117.47	116.77	117.79	117.09	117.79	117.09	116.26	116.51	116.96	117.22	117.67	117.92	118.37	116.96	Bull	116.24	~ 116.51	116.78	~ 116.86
週足	Open	High	Low	Close	値幅/週	引け形態	真の高値	真の安値	予想高値	予想安値	予想高値	予想安値	LBOP	S2	S1	PP	R1	R2	HBOP	3-days AVG	Support Zone 2	Support Zone 1	BP	Resistance Zone 1	Resistance Zone 2
2016/10/24 ~ 2016/10/28	113.00	115.33	112.84	115.02	249p	陽線引け	-	-	-	-	-	-	110.97	111.91	113.46	114.39	115.95	116.88	118.44						
2016/10/31 ~ 2016/11/04	114.85	115.68	114.02	114.85	166p	陰線引け	115.68	114.02	116.68	113.85	116.68	113.85	114.44	112.37	113.19	114.02	114.85	115.68	116.51	117.34					
2016/11/07 ~ 2016/11/11	115.13	116.57	113.68	115.83	289p	陽線引け	116.57	113.68	117.65	114.75	117.65	114.75	111.25	112.46	114.15	115.36	117.04	118.25	119.93	114.87	Bull	111.36	~ 112.46	113.57	~ 113.91
2016/11/14 ~ 2016/11/18	115.78	117.48	115.55	117.41	193p	陽線引け	117.48	115.55	118.41	116.48	118.41	116.48	114.22	114.89	116.15	116.82	118.08	118.75	120.01	115.67	Bull	114.15	~ 114.89	115.62	~ 115.85

EUR/USD										Demark						Pivot					Fibonacci Zone				
当日のOHLCLから計算される翌日の										TD Range Projection						TD pivot points									
日足	Open	High	Low	Close	値幅/日	引け形態	真の高値	真の安値	予想高値	予想安値	予想高値	予想安値	StopLoss	Support	Pivot	Resistance	StopLoss	3-days AVG	Support Zone 2	Support Zone 1	BP	Resistance Zone 1	Resistance Zone 2		
													LBOP	S2	S1	PP	R1	R2	HBOP						
2016/11/14	1.0839	1.0840	1.0709	1.0744	131p	陰線引け	-	-	-	-	-	-	1.0558	1.0634	1.0689	1.0764	1.0819	1.0895	1.0950						
2016/11/15	1.0744	1.0817	1.0714	1.0724	102p	陽線引け	1.0817	1.0714	1.0770	1.0668	1.0770	1.0668	1.0585	1.0649	1.0687	1.0752	1.0789	1.0854	1.0891						
2016/11/16	1.0724	1.0760	1.0667	1.0701	93p	陰線引け	1.0760	1.0667	1.0730	1.0637	1.0730	1.0637	1.0565	1.0616	1.0658	1.0709	1.0751	1.0802	1.0844	1.0742	Bear	1.0580	~ 1.0616	1.0651	~ 1.0662
2016/11/17	1.0701	1.0745	1.0620	1.0626	125p	陰線引け	1.0745	1.0620	1.0686	1.0561	1.0686	1.0561	1.0458	1.0539	1.0583	1.0664	1.0707	1.0788	1.0832	1.0708	Bear	1.0491	~ 1.0539	1.0587	~ 1.0601
2016/11/18	1.0627	1.0643	1.0570	1.0595	73p	陰線引け	1.0643	1.0570	1.0619	1.0546	1.0619	1.0546	1.0489	1.0529	1.0562	1.0602	1.0635	1.0675	1.0738	1.0658	Bear	1.0501	~ 1.0529	1.0557	~ 1.0566
週足	Open	High	Low	Close	値幅/週	引け形態	真の高値	真の安値	予想高値	予想安値	予想高値	予想安値	LBOP	S2	S1	PP	R1	R2	HBOP	3-days AVG	Support Zone 2	Support Zone 1	BP	Resistance Zone 1	Resistance Zone 2
2016/10/24 ~ 2016/10/28	1.0881	1.0991	1.0851	1.0984	140p	陽線引け	-	-	-	-	-	-	1.0753	1.0802	1.0893	1.0942	1.1033	1.1082	1.1173						
2016/10/31 ~ 2016/11/04	1.0978	1.1141	1.0936	1.1139	205p	陽線引け	1.1141	1.0936	1.1285	1.0995	1.1285	1.0995	1.1038	1.0799	1.0867	1.1003	1.1072	1.1208	1.1277	1.1413					
2016/11/07 ~ 2016/11/11	1.1085	1.1296	1.0831	1.0847	466p	陰線引け	1.1296	1.0831	1.1072	1.0606	1.1072	1.0606	1.0221	1.0526	1.0687	1.0991	1.1152	1.1457	1.1618	1.1002	Bear	1.0348	~ 1.0526	1.0704	~ 1.0759
2016/11/14 ~ 2016/11/18	1.0839	1.0840	1.0570	1.0595	270p	陰線引け	1.0847	1.0570	1.0721	1.0443	1.0721	1.0443	1.0226	1.0398	1.0496	1.0668	1.0767	1.0938	1.1037	1.0911	Bear	1.0295	~ 1.0398	1.0501	~ 1.0533

GBP/JPY										Demark						Pivot					Fibonacci Zone				
当日のOHLCLから計算される翌日の										TD Range Projection						TD pivot points									
日足	Open	High	Low	Close	値幅/日	引け形態	真の高値	真の安値	予想高値	予想安値	予想高値	予想安値	StopLoss	Support	Pivot	Resistance	StopLoss	3-days AVG	Support Zone 2	Support Zone 1	BP	Resistance Zone 1	Resistance Zone 2		
													LBOP	S2	S1	PP	R1	R2	HBOP						
2016/11/14	134.33	135.63	134.22	135.38	141p	陽線引け	-	-	-	-	-	-	133.11	133.66	134.52	135.07	135.93	136.49	137.35						
2016/11/15	135.38	136.56	134.20	135.77	236p	陽線引け	136.56	134.20	137.34	134.98	137.34	134.98	132.09	133.15	134.46	135.51	136.82	137.87	139.18						
2016/11/16	135.74	136.76	135.38	135.47	139p	陰線引け	136.76	135.38	136.12	134.73	136.12	134.73	133.59	134.48	134.98	135.87	136.36	137.26	137.75	135.48	Bull	133.95	~ 134.48	135.01	~ 135.18
2016/11/17	135.47	137.05	135.00	136.87	206p	陽線引け	137.05	135.00	137.99	135.93	137.99	135.93	133.50	134.25	135.56	136.30	137.61	138.36	139.67	135.89	Bull	133.46	~ 134.25	135.03	~ 135.28
2016/11/18	136.86	137.59	135.43	136.93	216p	陽線引け	137.59	135.43	138.34	136.18	138.34	136.18	133.55	134.49	135.71	136.65	137.87	138.81	140.03	136.28	Bull	133.67	~ 134.49	135.32	~ 135.57
週足	Open	High	Low	Close	値幅/週	引け形態																			

IMM扱い8通貨/ダウ/日経/金/オイル/主要クロス円の過去5日及び過去5週の4本値

AUDUSD 5					CADUSD 5					CHFUSD 5				
Date	Open	High	Low	Close	Date	Open	High	Low	Close	Date	Open	High	Low	Close
2016/11/18	0.7406	0.7417	0.7331	0.7338	2016/11/18	0.7394	0.7411	0.7372	0.7401	2016/11/18	0.9931	0.9939	0.9878	0.9901
2016/11/17	0.7492	0.7501	0.7397	0.7407	2016/11/17	0.7443	0.7463	0.7392	0.7394	2016/11/17	0.9983	1.0005	0.9926	0.9931
2016/11/16	0.7556	0.7571	0.7461	0.7493	2016/11/16	0.7432	0.7460	0.7404	0.7443	2016/11/16	0.9987	1.0016	0.9943	0.9984
2016/11/15	0.7563	0.7581	0.7512	0.7554	2016/11/15	0.7382	0.7438	0.7378	0.7432	2016/11/15	1.0027	1.0071	0.9975	0.9986
2016/11/14	0.7548	0.7565	0.7524	0.7562	2016/11/14	0.7397	0.7399	0.7359	0.7382	2016/11/14	1.0112	1.0116	0.9998	1.0027

CNYUSD 5					EURUSD 5					GBPUSD 5				
Date	Open	High	Low	Close	Date	Open	High	Low	Close	Date	Open	High	Low	Close
2016/11/18	0.1448	0.1449	0.1447	0.1448	2016/11/18	1.0627	1.0643	1.0570	1.0595	2016/11/18	1.2418	1.2436	1.2302	1.2356
2016/11/17	0.1453	0.1454	0.1452	0.1453	2016/11/17	1.0701	1.0745	1.0620	1.0626	2016/11/17	1.2442	1.2505	1.2409	1.2418
2016/11/16	0.1454	0.1455	0.1453	0.1453	2016/11/16	1.0724	1.0760	1.0667	1.0701	2016/11/16	1.2449	1.2502	1.2413	1.2442
2016/11/15	0.1459	0.1460	0.1455	0.1457	2016/11/15	1.0744	1.0817	1.0714	1.0724	2016/11/15	1.2501	1.2529	1.2381	1.2450
2016/11/14	0.1465	0.1466	0.1459	0.1460	2016/11/14	1.0839	1.0840	1.0709	1.0744	2016/11/14	1.2575	1.2594	1.2445	1.2501

JPYUSD 5					MXNUSD 5					NZDUSD 5				
Date	Open	High	Low	Close	Date	Open	High	Low	Close	Date	Open	High	Low	Close
2016/11/18	0.9074	0.9107	0.9016	0.9023	2016/11/18	0.0487	0.0492	0.0484	0.0485	2016/11/18	0.7023	0.7060	0.7001	0.7014
2016/11/17	0.9185	0.9211	0.9063	0.9073	2016/11/17	0.0495	0.0496	0.0489	0.0490	2016/11/17	0.7084	0.7110	0.7014	0.7023
2016/11/16	0.9171	0.9191	0.9111	0.9185	2016/11/16	0.0490	0.0495	0.0487	0.0493	2016/11/16	0.7099	0.7114	0.7036	0.7084
2016/11/15	0.9234	0.9278	0.9146	0.9171	2016/11/15	0.0490	0.0495	0.0487	0.0495	2016/11/15	0.7118	0.7144	0.7071	0.7099
2016/11/14	0.9361	0.9369	0.9213	0.9234	2016/11/14	0.0477	0.0485	0.0475	0.0484	2016/11/14	0.7131	0.7131	0.7070	0.7118

Nikkei 225 - Japonia (NIKKEI) 5					
Date	Open	High	Low	Close	(ドル建て終値)
2016/11/18	18024.21	18043.72	17967.41	17967.41	162.32
2016/11/17	17766.61	17884.06	17764.08	17862.63	163.86
2016/11/16	17832.51	17886.44	17807.47	17862.21	163.23
2016/11/15	17690.22	17727.58	17605.77	17668.15	163.41
2016/11/14	17467.49	17697.33	17455.78	17672.62	164.21
週4本値	17467.49	18043.72	17455.78	17967.41	162.32

XAUUSD 5					
Date	Open	High	Low	Close	出来高
2016/11/18	1216.16	1217.62	1203.01	1207.87	0
2016/11/17	1224.67	1231.18	1211.18	1216.08	0
2016/11/16	1227.63	1232.86	1221.33	1225.05	0
2016/11/15	1221.46	1231.25	1218.95	1228.45	0
2016/11/14	1227.78	1231.10	1211.42	1221.03	0
週4本値	1227.78	1232.86	1203.01	1207.87	

Dow Jones Industrial - USA (DJIA) 5					
Date	Open	High	Low	Close	出来高
2016/11/18	18905.33	18915.74	18853.83	18867.93	109880725
2016/11/17	18866.22	18904.03	18845.27	18903.82	89936070
2016/11/16	18909.85	18909.85	18825.89	18868.14	87315034
2016/11/15	18858.21	18925.26	18806.06	18923.06	100659335
2016/11/14	18876.77	18934.05	18815.75	18868.69	112252186
週4本値	18876.77	18934.05	18806.06	18867.93	109880725

Historical Data by **Stooq**
 Historical Data by **MarketNewsline**
 (ダウと日経)
 Arrangement by **FX_勝てば官軍?**

Crude Light Oil 5						
Date	Open	High	Low	Close	Volume	
2016/11/18	45.00	45.77	44.56	45.59	0	
2016/11/17	45.37	46.55	44.88	44.94	0	
2016/11/16	45.73	46.34	45.05	45.31	0	
2016/11/15	43.73	46.05	43.57	45.79	1475141	
2016/11/14	43.27	43.79	42.22	43.73	1467358	
週4本値	43.27	46.55	42.22	45.59		

USDJPY 5					EURJPY 5					GBPJPY 5				
日付	始値	高値	安値	終値	日付	始値	高値	安値	終値	日付	始値	高値	安値	終値
2016/11/18	110.21	110.92	109.81	110.82	2016/11/18	117.12	117.47	116.77	117.41	2016/11/18	136.86	137.59	135.43	136.93
2016/11/17	108.88	110.34	108.56	110.22	2016/11/17	116.51	117.23	116.26	117.12	2016/11/17	135.47	137.05	135.00	136.87
2016/11/16	109.04	109.76	108.80	108.88	2016/11/16	116.94	117.48	116.43	116.51	2016/11/16	135.74	136.76	135.38	135.47
2016/11/15	108.29	109.34	107.78	109.05	2016/11/15	116.35	117.22	116.09	116.94	2016/11/15	135.38	136.56	134.20	135.77
2016/11/14	106.83	108.54	106.74	108.29	2016/11/14	115.78	116.51	115.55	116.35	2016/11/14	134.33	135.63	134.22	135.38

USDJPY Weekly 28					EURJPY Weekly 28					GBPJPY Weekly 28				
日付	始値	高値	安値	終値	日付	始値	高値	安値	終値	日付	始値	高値	安値	終値
2016/11/18	106.83	110.92	106.74	110.82	2016/11/18	115.78	117.48	115.55	117.41	2016/11/18	134.33	137.59	134.20	136.93
2016/11/11	103.86	106.95	101.17	106.78	2016/11/11	115.13	116.57	113.68	115.83	2016/11/11	129.53	134.91	126.66	134.51
2016/11/04	104.62	105.23	102.55	103.11	2016/11/04	114.85	115.68	114.02	114.85	2016/11/04	127.56	129.45	126.50	129.10
2016/10/28	103.85	105.53	103.72	104.71	2016/10/28	113.00	115.33	112.84	115.02	2016/10/28	126.94	128.42	126.61	127.66
2016/10/21	104.35	104.37	103.18	103.83	2016/10/21	114.46	114.68	112.61	112.97	2016/10/21	127.00	128.16	126.13	126.91

先週のIMM取り扱い対ドル8通貨チャート

※ 赤点線は週最高値/青天線は週最低値、BB中心線はSMA21

2016/11/14 ~ 2016/11/18

Chart by OANDA Japan MetaTrader4

