

JAPANESE YEN - CHICAGO MERCANTILE EXCHANGE

Code-097741

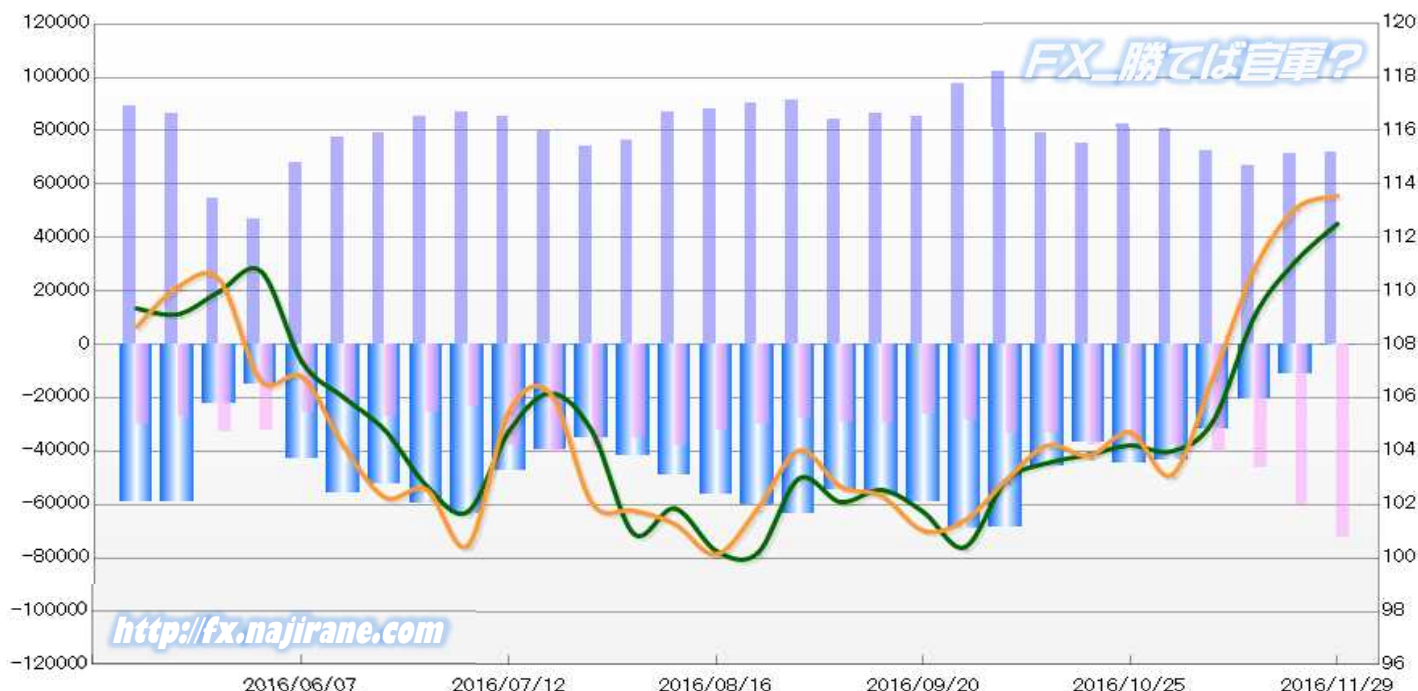
2016/06/07 ~ 2016/11/29

2016/12/02 NYクロース時公表値

Report_Date	Non Commercial Positions											火曜日 引け値	金曜日 引け値	
	Long	増減	増減(%)	Short	増減	増減(%)	売り越し	増減	増減(%)	売買計	増減			増減(%)
2016/11/29	72124	941	1.3%	72393	12110	20.1%	269	-11169	-102.5%	144517	13051	9.9%	112.52	113.56
2016/11/22	71183	4098	6.1%	60283	13874	29.9%	-10900	-9776	-47.3%	131466	17972	15.8%	111.12	113.09
2016/11/15	67085	-5534	-7.6%	46409	5746	14.1%	-20676	-11280	-35.3%	113494	212	0.2%	109.05	110.82
2016/11/08	72619	-8391	-10.4%	40663	2813	7.4%	-31956	-11204	-26.0%	113282	-5578	-4.7%	105.13	106.78
2016/11/01	81010	-1375	-1.7%	37850	60	0.2%	-43160	-1435	-3.2%	118860	-1315	-1.1%	104.00	103.11
2016/10/25	82385	7419	9.9%	37790	-185	-0.5%	-44595	7604	20.6%	120175	7234	6.4%	104.22	104.71
2016/10/18	74966	-4313	-5.4%	37975	4605	13.8%	-36991	-8918	-19.4%	112941	292	0.3%	103.87	103.83
2016/10/11	79279	-22707	-22.3%	33370	79	0.2%	-45909	-22786	-33.2%	112649	-22628	-16.7%	103.56	104.22
2016/10/04	101986	4554	4.7%	33291	4751	16.6%	-68695	-197	-0.3%	135277	9305	7.4%	102.90	102.91
2016/09/27	97432	12315	14.5%	28540	2208	8.4%	-68892	10107	17.2%	125972	14523	13.0%	100.41	101.41
2016/09/20	85117	-1023	-1.2%	26332	-2962	-10.1%	-58785	1939	3.4%	111449	-3985	-3.5%	101.73	101.03
2016/09/13	86140	2172	2.6%	29294	-185	-0.6%	-56846	2357	4.3%	115434	1987	1.8%	102.55	102.32
2016/09/06	83968	-7602	-8.3%	29479	1570	5.6%	-54489	-9172	-14.4%	113447	-6032	-5.0%	102.10	102.68
2016/08/30	91570	1183	1.3%	27909	-2162	-7.2%	-63661	3345	5.5%	119479	-979	-0.8%	102.98	104.03
2016/08/23	90387	2114	2.4%	30071	-2196	-6.8%	-60316	4310	7.7%	120458	-82	-0.1%	100.19	101.84
2016/08/16	88273	1554	1.8%	32267	-5621	-14.8%	-56006	7175	14.7%	120540	-4067	-3.3%	100.27	100.14
2016/08/09	86719	10144	13.2%	37888	3013	8.6%	-48831	7131	17.1%	124607	13157	11.8%	101.86	101.28
2016/08/02	76575	2501	3.4%	34875	-4241	-10.8%	-41700	6742	19.3%	111450	-1740	-1.5%	100.92	101.78
2016/07/26	74074	-5790	-7.2%	39116	-1395	-3.4%	-34958	-4395	-11.2%	113190	-7185	-6.0%	104.74	102.05
2016/07/19	79864	-5500	-6.4%	40511	2692	7.1%	-39353	-8192	-17.2%	120375	-2808	-2.3%	106.17	106.16
2016/07/12	85364	-1673	-1.9%	37819	14350	61.1%	-47545	-16023	-25.2%	123183	12677	11.5%	104.76	105.49
2016/07/05	87037	1544	1.8%	23469	-2274	-8.8%	-63568	3818	6.4%	110506	-730	-0.7%	101.74	100.47
2016/06/28	85493	6095	7.7%	25743	-1359	-5.0%	-59750	7454	14.3%	111236	4736	4.4%	102.71	102.57
2016/06/21	79398	1695	2.2%	27102	5089	23.1%	-52296	-3394	-6.1%	106500	6784	6.8%	104.78	102.27
2016/06/14	77703	9466	13.9%	22013	-3371	-13.3%	-55690	12837	30.0%	99716	6095	6.5%	106.02	104.19
2016/06/07	68237			25384			-42853			93621			107.33	106.78

JAPANESE YEN - CHICAGO MERCANTILE EXCHANGE  
FUTURES ONLY POSITIONS

— 金曜終値 — 火曜終値 — Short枚数 — Long枚数 ■ 売り越し枚数(マイナスの場合は買越しと読替え)



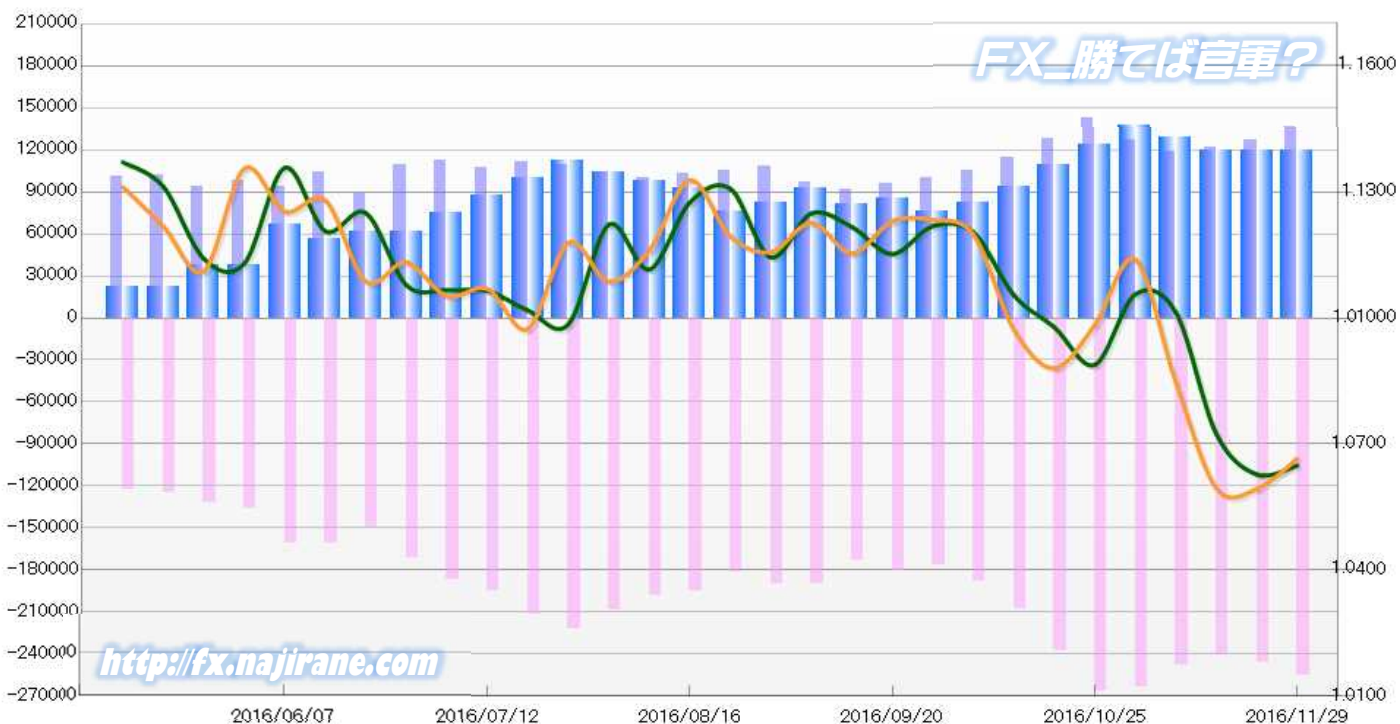
**EURO FX - CHICAGO MERCANTILE EXCHANGE**  
**2016/06/07 ~ 2016/11/29**

Code-099741  
 2016/12/02 NYクローズ時公表値

Report_Date	Non Commercial Positions												火曜日 引け値	金曜日 引け値
	Long	増減		Short	増減		売り越し	増減		売買計	増減			
2016/11/29	136108	8986	7.1%	255348	8878	3.6%	119240	-108	-0.1%	391456	17864	4.8%	1.0649	1.0665
2016/11/22	127122	5547	4.6%	246470	5713	2.4%	119348	166	0.1%	373592	11260	3.1%	1.0628	1.0593
2016/11/15	121575	2678	2.3%	240757	-7454	-3.0%	119182	-10132	-7.8%	362332	-4776	-1.3%	1.0724	1.0595
2016/11/08	118897	-7546	-6.0%	248211	-15617	-5.9%	129314	-8071	-5.9%	367108	-23163	-5.9%	1.1013	1.0847
2016/11/01	126443	-16438	-11.5%	263828	-2909	-1.1%	137385	13529	10.9%	390271	-19347	-4.7%	1.1056	1.1139
2016/10/25	142881	14700	11.5%	266737	29288	12.3%	123856	14588	13.4%	409618	43988	12.0%	1.0889	1.0984
2016/10/18	128181	13897	12.2%	237449	29693	14.3%	109268	15796	16.9%	365630	43590	13.5%	1.0978	1.0880
2016/10/11	114284	8650	8.2%	207756	20063	10.7%	93472	11413	13.9%	322040	28713	9.8%	1.1054	1.0972
2016/10/04	105634	5142	5.1%	187693	11171	6.3%	82059	6029	7.9%	293327	16313	5.9%	1.1204	1.1199
2016/09/27	100492	4794	5.0%	176522	-4201	-2.3%	76030	-8995	-10.6%	277014	593	0.2%	1.1219	1.1233
2016/09/20	95698	3915	4.3%	180723	7465	4.3%	85025	3550	4.4%	276421	11380	4.3%	1.1152	1.1230
2016/09/13	91783	-5541	-5.7%	173258	-16696	-8.8%	81475	-11155	-12.0%	265041	-22237	-7.7%	1.1217	1.1154
2016/09/06	97324	-10937	-10.1%	189954	-232	-0.1%	92630	10705	13.1%	287278	-11169	-3.7%	1.1249	1.1226
2016/08/30	108261	2887	2.7%	190186	8154	4.5%	81925	5267	6.9%	298447	11041	3.8%	1.1144	1.1157
2016/08/23	105374	2314	2.2%	182032	-13536	-6.9%	76658	-15850	-17.1%	287406	-11222	-3.8%	1.1308	1.1195
2016/08/16	103060	2618	2.6%	195568	-3273	-1.6%	92508	-5891	-6.0%	298628	-655	-0.2%	1.1275	1.1328
2016/08/09	100442	-4074	-3.9%	198841	-9778	-4.7%	98399	-5704	-5.5%	299283	-13852	-4.4%	1.1115	1.1161
2016/08/02	104516	-4677	-4.3%	208619	-13174	-5.9%	104103	-8497	-7.5%	313135	-17851	-5.4%	1.1222	1.1087
2016/07/26	109193	-2385	-2.1%	221793	10324	4.9%	112600	12709	12.7%	330986	7939	2.5%	1.0985	1.1179
2016/07/19	111578	3943	3.7%	211469	16174	8.3%	99891	12231	14.0%	323047	20117	6.6%	1.1018	1.0974
2016/07/12	107635	-4376	-3.9%	195295	7957	4.2%	87660	12333	16.4%	302930	3581	1.2%	1.1065	1.1069
2016/07/05	112011	2431	2.2%	187338	15824	9.2%	75327	13393	21.6%	299349	18255	6.5%	1.1066	1.1052
2016/06/28	109580	20941	23.6%	171514	21529	14.4%	61934	588	1.0%	281094	42470	17.8%	1.1078	1.1132
2016/06/21	88639	-15871	-15.2%	149985	-11014	-6.8%	61346	4857	8.6%	238624	-26885	-10.1%	1.1250	1.1087
2016/06/14	104510	11018	11.8%	160999	395	0.2%	56489	-10623	-15.8%	265509	11413	4.5%	1.1207	1.1280
2016/06/07	93492			160604			67112			254096			1.1357	1.1253

**EURO FX - CHICAGO MERCANTILE EXCHANGE**  
**FUTURES ONLY POSITIONS**

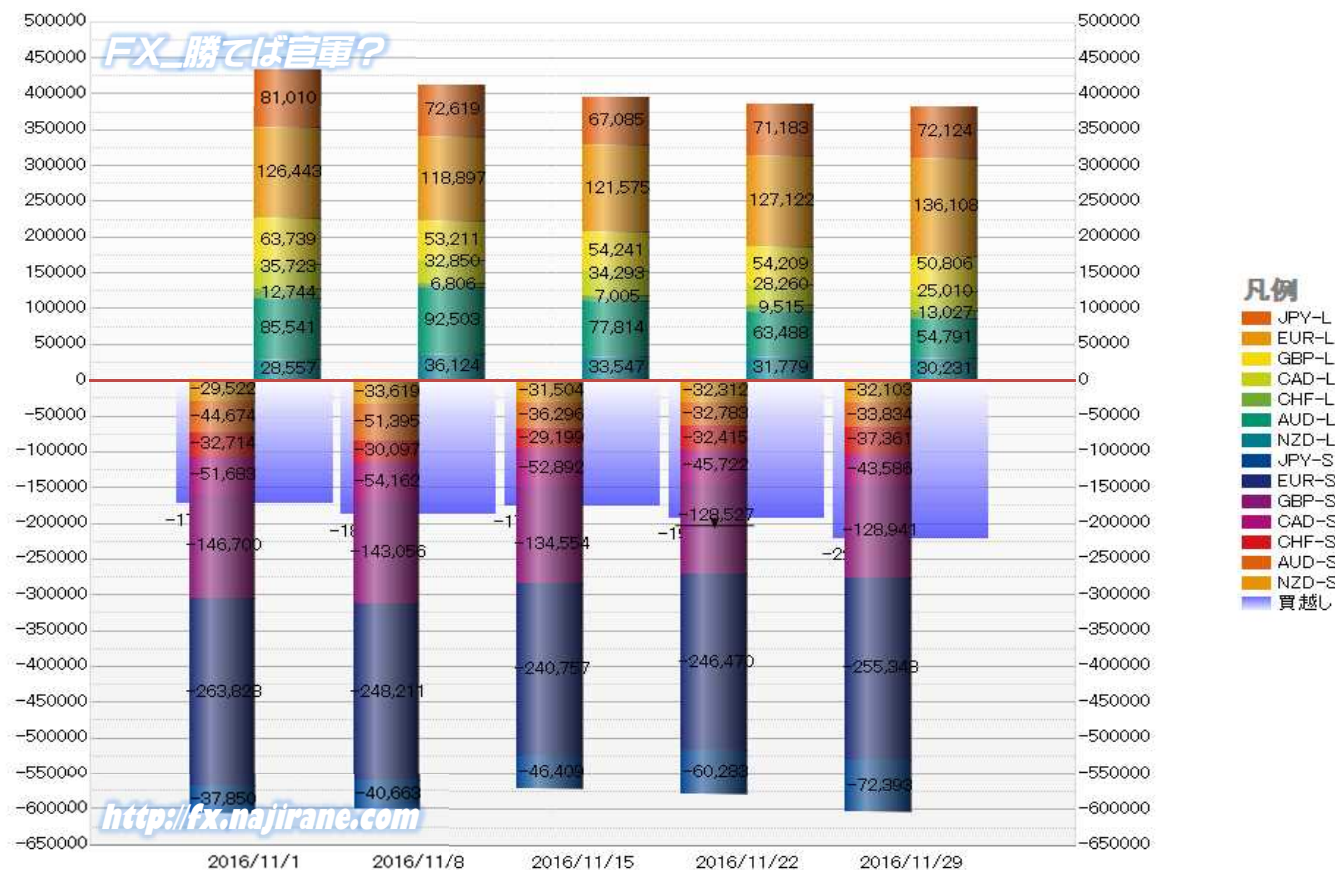
— 金曜締め週終値 — 火曜締め週終値 — Short枚数 — Long枚数 — 売り越し枚数(マイナスの場合は買越しと読替え)



<http://fx.najirane.com>

	2016/11/01			2016/11/08			2016/11/15			2016/11/22			2016/11/29		
	Long	Short	売り越し	Long	Short	売り越し	Long	Short	売り越し	Long	Short	売り越し	Long	Short	売り越し
JPY	81010	37850	-43160	72619	40663	-31956	67085	46409	-20676	71183	60283	-10900	72124	72393	269
	前週比 枚数増減 (枚)			-8391	2813	-11204	-5534	5746	-11280	4098	13874	-9776	941	12110	-10631
	前週比 枚数増減 (%)			-10.36%	7.43%	-25.96%	-7.62%	14.13%	-35.30%	6.11%	29.90%	-47.28%	1.32%	20.09%	-102.47%
EUR	126443	263828	137385	118897	248211	129314	121575	240757	119182	127122	246470	119348	136108	255348	119240
	前週比 枚数増減 (枚)			-7546	-15617	-8071	2678	-7454	-10132	5547	5713	166	8986	8878	-108
	前週比 枚数増減 (%)			-5.97%	-5.92%	-5.87%	2.25%	-3.00%	-7.84%	4.56%	2.37%	0.14%	7.07%	3.60%	-0.09%
GBP	63739	146700	82961	53211	143056	89845	54241	134554	80313	54209	128527	74318	50806	128941	78135
	前週比 枚数増減 (枚)			-10528	-3644	6884	1030	-8502	-9532	-32	-6027	-5995	-3403	414	3817
	前週比 枚数増減 (%)			-16.52%	-2.48%	8.30%	1.94%	-5.94%	-10.61%	-0.06%	-4.48%	-7.46%	-6.28%	0.32%	5.14%
AUD	85541	44674	-40867	92503	51395	-41108	77814	36296	-41518	63488	32783	-30705	54791	33834	-20957
	前週比 枚数増減 (枚)			6962	6721	241	-14689	-15099	410	-14326	-3513	-10813	-8697	1051	-9748
	前週比 枚数増減 (%)			8.14%	15.04%	0.59%	-15.88%	-29.38%	1.00%	-18.41%	-9.68%	-26.04%	-13.70%	3.21%	-31.75%
CAD	35723	51683	15960	32850	54162	21312	34293	52892	18599	28260	45722	17462	25010	43586	18576
	前週比 枚数増減 (枚)			-2873	2479	5352	1443	-1270	-2713	-6033	-7170	-1137	-3250	-2136	1114
	前週比 枚数増減 (%)			-8.04%	4.80%	33.53%	4.39%	-2.34%	-12.73%	-17.59%	-13.56%	-6.11%	-11.50%	-4.67%	6.38%
CHF	12744	32714	19970	6806	30097	23291	7005	29199	22194	9515	32415	22900	13027	37361	24334
	前週比 枚数増減 (枚)			-5938	-2617	3321	199	-898	-1097	2510	3216	706	3512	4946	1434
	前週比 枚数増減 (%)			-46.59%	-8.00%	16.63%	2.92%	-2.98%	-4.71%	35.83%	11.01%	3.18%	36.91%	15.26%	6.26%
NZD	28557	29522	965	36124	33619	-2505	33547	31504	-2043	31779	32312	533	30231	32103	1872
	前週比 枚数増減 (枚)			7567	4097	1540	-2577	-2115	-462	-1768	808	-1510	-1548	-209	1339
	前週比 枚数増減 (%)			26.50%	13.88%	-359.59%	-7.13%	-6.29%	-18.44%	-5.27%	2.56%	-126.09%	-4.87%	-0.65%	251.22%
MXN	30838	67310	36472	25298	58294	32996	22124	67277	45153	19884	68198	48314	19314	73814	54500
	前週比 枚数増減 (枚)			-5540	-9016	-3476	-3174	8983	12157	-2240	921	3161	-570	5616	6186
	前週比 枚数増減 (%)			-17.96%	-13.39%	-9.53%	-12.55%	15.41%	36.84%	-10.12%	1.37%	7.00%	-2.87%	8.23%	12.80%
Total All 8	464595	674281	209686	438308	659497	221189	417684	638888	221204	405440	646710	241270	401411	677380	275969
	前週比 枚数増減 (枚)			-26287	-14784	11503	-20624	-20609	15	-12244	7822	20066	-4029	30670	34699
	前週比 枚数増減 (%)			-5.66%	-2.19%	5.49%	-4.71%	-3.12%	0.01%	-2.93%	1.22%	9.07%	-0.99%	4.74%	14.38%
Total 7 (MXN除)	433757	606971	173214	413010	601203	188193	395560	571611	176051	385556	578512	192956	382097	603566	221469
	前週比 枚数増減 (枚)			-20747	-5768	14979	-17450	-29592	-12142	-10004	6901	16905	-3459	25054	28513
	前週比 枚数増減 (%)			-4.8%	-1.0%	8.6%	-4.2%	-4.9%	-6.5%	-2.5%	1.2%	9.6%	-0.9%	4.3%	14.8%

### 直近5週 CFTC IMM主要7通貨の構成



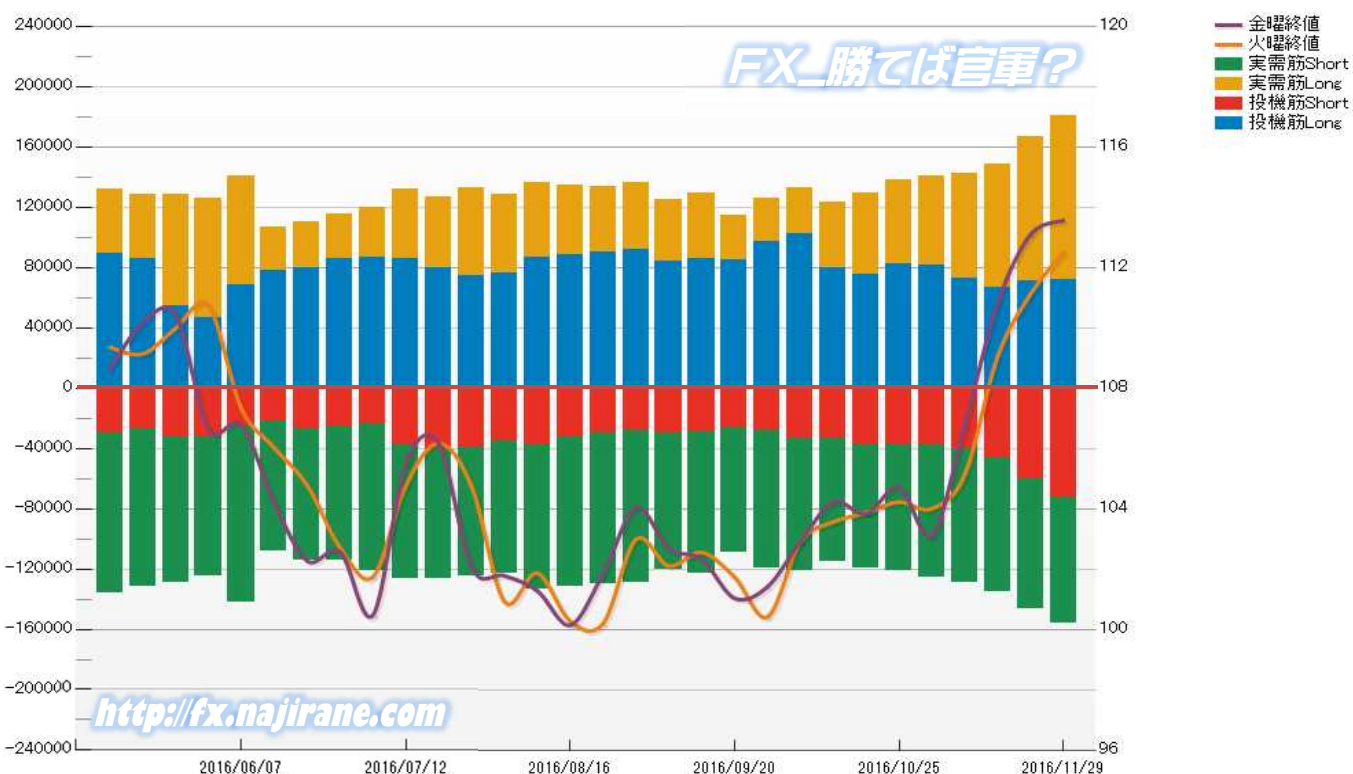


JAPANESE YEN - CHICAGO MERCANTILE EXCHANGE  
FUTURES ONLY POSITIONS

Code-097741  
2016/12/02 公表値

Date	投機筋集計				実需筋集計				投機筋+実需筋合計				ドル円終値	
	円買い	円売り	売り越し	売買計	円買い	円売り	売り越し	売買計	円買い	円売り	売り越し	売買計	火曜締め	金曜締め
2016/11/29	72124	72393	269	144517	108163	83995	-24168	192158	180287	156388	-23899	336675	112.52	113.56
2016/11/22	71183	60283	-10900	131466	95166	86202	-8964	181368	166349	146485	-19864	312834	111.12	113.09
2016/11/15	67085	46409	-20676	113494	81503	88408	6905	169911	148588	134817	-13771	283405	109.05	110.82
2016/11/08	72619	40663	-31956	113282	69838	88139	18301	157977	142457	128802	-13655	271259	105.13	106.78
2016/11/01	81010	37850	-43160	118860	59272	87511	28239	146783	140282	125361	-14921	265643	104.00	103.11
2016/10/25	82385	37790	-44595	120175	55555	83712	28157	139267	137940	121502	-16438	259442	104.22	104.71
2016/10/18	74966	37975	-36991	112941	54359	81884	27525	136243	129325	119859	-9466	249184	103.87	103.83
2016/10/11	79279	33370	-45909	112649	43806	81544	37738	125350	123085	114914	-8171	237999	103.56	104.22
2016/10/04	101986	33291	-68695	135277	30627	87820	57193	118447	132613	121111	-11502	253724	102.90	102.91
2016/09/27	97432	28540	-68892	125972	28326	90589	62263	118915	125758	119129	-6629	244887	100.41	101.41
2016/09/20	85117	26332	-58785	111449	29715	83021	53306	112736	114832	109353	-5479	224185	101.73	101.03
2016/09/13	86140	29294	-56846	115434	43492	93700	50208	137192	129632	122994	-6638	252626	102.55	102.32
2016/09/06	83968	29479	-54489	113447	41120	91024	49904	132144	125088	120503	-4585	245591	102.10	102.68
2016/08/30	91570	27909	-63661	119479	44366	101570	57204	145936	135936	129479	-6457	265415	102.98	104.03
2016/08/23	90387	30071	-60316	120458	43245	99482	56237	142727	133632	129553	-4079	263185	100.19	101.84
2016/08/16	88273	32267	-56006	120540	46280	99196	52916	145476	134553	131463	-3090	266016	100.27	100.14
2016/08/09	86719	37888	-48831	124607	49619	95343	45724	144962	136338	133231	-3107	269569	101.86	101.28
2016/08/02	76575	34875	-41700	111450	51707	88074	36367	139781	128282	122949	-5333	251231	100.92	101.78
2016/07/26	74074	39116	-34958	113190	58947	85458	26511	144405	133021	124574	-8447	257595	104.74	102.05
2016/07/19	79864	40511	-39353	120375	46993	85719	38726	132712	126857	126230	-627	253087	106.17	106.16
2016/07/12	85364	37819	-47545	123183	46842	88850	42008	135692	132206	126669	-5537	258875	104.76	105.49
2016/07/05	87037	23469	-63568	110506	32637	97652	65015	130289	119674	121121	1447	240795	101.74	100.47
2016/06/28	85493	25743	-59750	111236	30249	88316	58067	118565	115742	114059	-1683	229801	102.71	102.57
2016/06/21	79398	27102	-52296	106500	30450	86992	56542	117442	109848	114094	4246	223942	104.78	102.27
2016/06/14	77703	22013	-55690	99716	28678	86062	57384	114740	106381	108075	1694	214456	106.02	104.19
2016/06/07	68237	25384	-42853	93621	72616	116477	43861	189093	140853	141861	1008	282714	107.33	106.78
2016/05/31	46964	32127	-14837	79091	78749	92275	13526	171024	125713	124402	-1311	250115	110.74	106.64
2016/05/24	54792	32733	-22059	87525	73603	96638	23035	170241	128395	129371	976	257766	109.98	110.42
2016/05/17	86165	27246	-58919	113411	41969	104408	62439	146377	128134	131654	3520	259788	109.13	110.16
2016/05/10	88897	29850	-59047	118747	43309	106603	63294	149912	132206	136453	4247	268659	109.35	108.65

JAPANESE YEN - CHICAGO MERCANTILE EXCHANGE  
FUTURES ONLY POSITIONS Code-097741

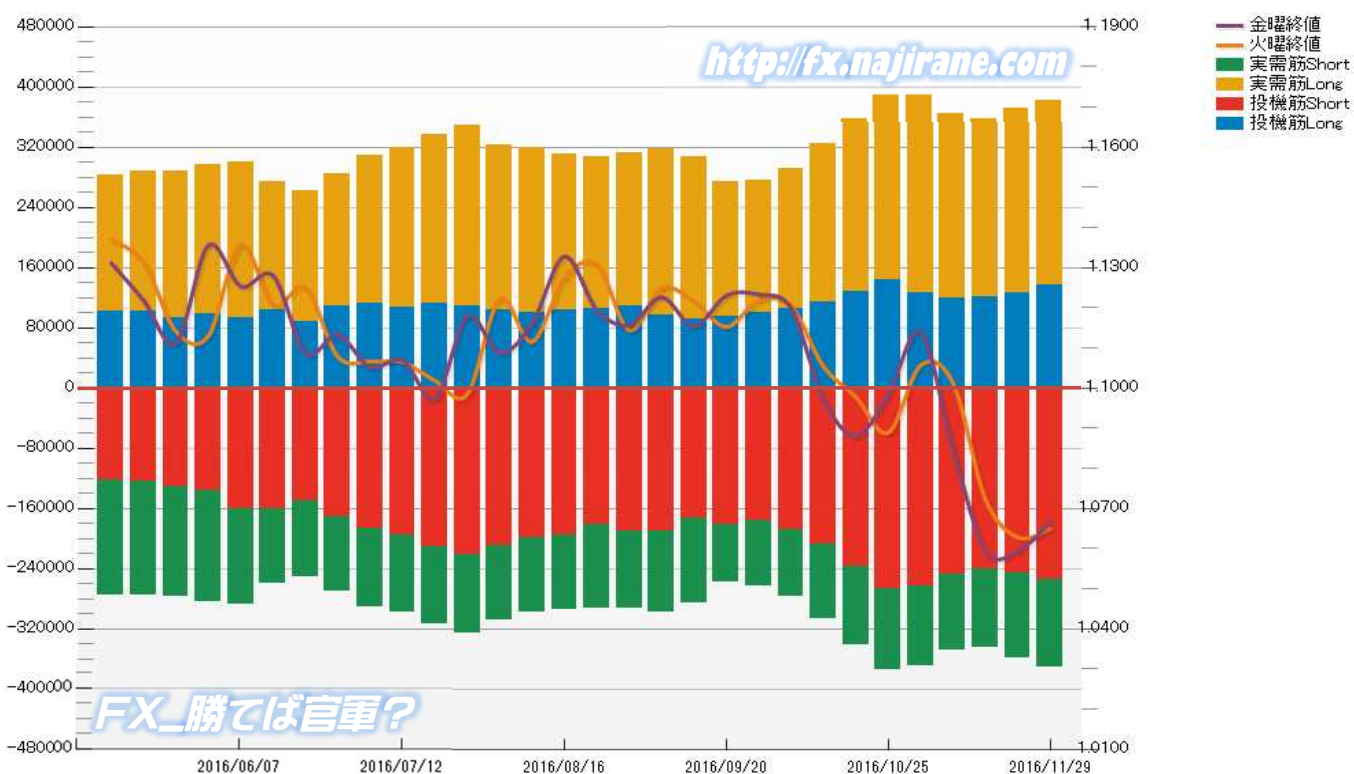


EURO FX - CHICAGO MERCANTILE EXCHANGE  
FUTURES ONLY POSITIONS

Code-099741  
2016/12/02 公表値

Date	投機筋集計				実需筋集計				投機筋+実需筋合計				ユーロドル終値	
	EUR買い	EUR売り	売り越し	売買計	EUR買い	EUR売り	売り越し	売買計	EUR買い	EUR売り	売り越し	売買計	火曜締め	金曜締め
2016/11/29	136108	255348	119240	391456	245355	116561	-128794	361916	381463	371909	-9554	753372	1.0649	1.0665
2016/11/22	127122	246470	119348	373592	243796	111726	-132070	355522	370918	358196	-12722	729114	1.0628	1.0593
2016/11/15	121575	240757	119182	362332	235596	104624	-130972	340220	357171	345381	-11790	702552	1.0724	1.0595
2016/11/08	118897	248211	129314	367108	245616	101035	-144581	346651	364513	349246	-15267	713759	1.1013	1.0847
2016/11/01	126443	263828	137385	390271	261922	105533	-156389	367455	388365	369361	-19004	757726	1.1056	1.1139
2016/10/25	142881	266737	123856	409618	246230	108147	-138083	354377	389111	374884	-14227	763995	1.0889	1.0984
2016/10/18	128181	237449	109268	365630	230197	104790	-125407	334987	358378	342239	-16139	700617	1.0978	1.0880
2016/10/11	114284	207756	93472	322040	209879	99131	-110748	309010	324163	306887	-17276	631050	1.1054	1.0972
2016/10/04	105634	187693	82059	293327	186827	89483	-97344	276310	292461	277176	-15285	569637	1.1204	1.1199
2016/09/27	100492	176522	76030	277014	174828	86986	-87842	261814	275320	263508	-11812	538828	1.1219	1.1233
2016/09/20	95698	180723	85025	276421	177910	77967	-99943	255877	273608	258690	-14918	532298	1.1152	1.1230
2016/09/13	91783	173258	81475	265041	216048	112825	-103223	328873	307831	286083	-21748	593914	1.1217	1.1154
2016/09/06	97324	189954	92630	287278	220781	107441	-113340	328222	318105	297395	-20710	615500	1.1249	1.1226
2016/08/30	108261	190186	81925	298447	204241	103433	-100808	307674	312502	293619	-18883	606121	1.1144	1.1157
2016/08/23	105374	182032	76658	287406	202180	111006	-91174	313186	307554	293038	-14516	600592	1.1308	1.1195
2016/08/16	103060	195568	92508	298628	208203	99798	-108405	308001	311263	295366	-15897	606629	1.1275	1.1328
2016/08/09	100442	198841	98399	299283	218984	99470	-119514	318454	319426	298311	-21115	617737	1.1115	1.1161
2016/08/02	104516	208619	104103	313135	218778	99452	-119326	318230	323294	308071	-15223	631365	1.1222	1.1087
2016/07/26	109193	221793	112600	330986	239073	103338	-135735	342411	348266	325131	-23135	673397	1.0985	1.1179
2016/07/19	111578	211469	99891	323047	225909	101654	-124255	327563	337487	313123	-24364	650610	1.1018	1.0974
2016/07/12	107635	195295	87660	302930	211520	103371	-108149	314891	319155	298666	-20489	617821	1.1065	1.1069
2016/07/05	112011	187338	75327	299349	197845	104095	-93750	301940	309856	291433	-18423	601289	1.1066	1.1052
2016/06/28	109580	171514	61934	281094	175747	99094	-76653	274841	285327	270608	-14719	555935	1.1078	1.1132
2016/06/21	88639	149985	61346	238624	174231	100833	-73398	275064	262870	250818	-12052	513688	1.1250	1.1087
2016/06/14	104510	160999	56489	265509	168953	98248	-70705	267201	273463	259247	-14216	532710	1.1207	1.1280
2016/06/07	93492	160604	67112	254096	207448	127910	-79538	335358	300940	288514	-12426	589454	1.1357	1.1253
2016/05/31	98218	135872	37654	234090	198726	148012	-50714	346738	296944	283884	-13060	580828	1.1130	1.1356
2016/05/24	93955	131850	37895	225805	193758	145257	-48501	339015	287713	277107	-10606	564820	1.1141	1.1111
2016/05/17	101723	124310	22587	226033	186065	151949	-34116	338014	287788	276259	-11529	564047	1.1313	1.1218
2016/05/10	101277	123149	21872	224426	181863	152379	-29484	334242	283140	275528	-7612	558668	1.1371	1.1312

EURO FX - CHICAGO MERCANTILE EXCHANGE  
FUTURES ONLY POSITIONS Code-099741



# CME Daily Volume

シカゴ・マーカントイル取引所 取扱高日次データ

FX\_勝てば官軍?

<http://fx.najirane.com>

EU Euro	取扱高			当日含む前5営業日計			参考レート	
	CALL	PUT	FUTURE	CALL	PUT	FUTURE	Open	Close
2016/12/1 (木)	10979	12982	235621	54970	64204	1168283	1.0596	1.0659
2016/11/30 (水)	15895	18622	271669	56964	66579	1175782	1.0649	1.0596
2016/11/29 (火)	13311	9521	198882	48400	55667	1081002	1.0611	1.0649
2016/11/28 (月)	6613	10269	212658	41002	55491	1064804	1.0599	1.0613
2016/11/25 (金)	8172	12810	249453	48495	64888	1100115	1.0557	1.0593
2016/11/23 (水)	12973	15357	243120	60850	79387	1078985	1.0628	1.0552
2016/11/22 (火)	7331	7710	176889	63029	79084	1061263	1.0632	1.0628
2016/11/21 (月)	5913	9345	182684	67283	86584	1099582	1.0588	1.0632
2016/11/18 (金)	14106	19666	247969	78559	95289	1167331	1.0627	1.0595
2016/11/17 (木)	20527	27309	228323	73212	87968	1105327	1.0701	1.0626

AUS Dollar	取扱高			当日含む前5営業日計			参考レート	
	CALL	PUT	FUTURE	CALL	PUT	FUTURE	Open	Close
2016/12/1 (木)	1717	1125	98348	7323	7659	501549	0.7388	0.7416
2016/11/30 (水)	2616	2140	120061	7807	7667	496101	0.7487	0.7388
2016/11/29 (火)	1173	546	85196	6657	6636	472427	0.7488	0.7487
2016/11/28 (月)	930	2210	85934	8435	7876	493544	0.7440	0.7489
2016/11/25 (金)	887	1638	112010	10162	9278	512328	0.7405	0.7439
2016/11/23 (水)	2201	1133	92900	12010	9214	513957	0.7403	0.7382
2016/11/22 (火)	1466	1109	96387	11947	12227	543532	0.7368	0.7403
2016/11/21 (月)	2951	1786	106313	12340	12897	554491	0.7331	0.7368
2016/11/18 (金)	2657	3612	104718	10959	13583	548083	0.7406	0.7338
2016/11/17 (木)	2735	1574	113639	9656	15361	571017	0.7492	0.7407

CHE Franc	取扱高			当日含む前5営業日計			参考レート	
	CALL	PUT	FUTURE	CALL	PUT	FUTURE	Open	Close
2016/12/1 (木)	9	0	4	215	0	291	0.9834	0.9894
2016/11/30 (水)	125	0	38	497	0	464	0.9884	0.9834
2016/11/29 (火)	60	0	31	382	0	507	0.9868	0.9884
2016/11/28 (月)	0	0	155	535	0	1066	0.9865	0.9870
2016/11/25 (金)	21	0	63	646	0	956	0.9834	0.9862
2016/11/23 (水)	291	0	177	724	0	1093	0.9891	0.9831
2016/11/22 (火)	10	0	81	458	0	1093	0.9918	0.9891
2016/11/21 (月)	213	0	590	614	0	1474	0.9896	0.9917
2016/11/18 (金)	111	0	45	451	0	1486	0.9931	0.9901
2016/11/17 (木)	99	0	200	435	0	1703	0.9983	0.9931

JPN Yen	取扱高			当日含む前5営業日計			参考レート	
	CALL	PUT	FUTURE	CALL	PUT	FUTURE	Open	Close
2016/12/1 (木)	3158	3524	176340	21989	21357	994973	114.38	114.18
2016/11/30 (水)	4433	9330	216179	27030	25571	983510	112.52	114.38
2016/11/29 (火)	3783	2669	174711	28114	21529	916078	111.83	112.52
2016/11/28 (月)	3909	1646	198745	27788	22306	891695	112.88	111.83
2016/11/25 (金)	6706	4188	228998	28904	28871	863479	113.31	113.09
2016/11/23 (水)	8199	7738	164877	25556	35642	791792	111.12	112.48
2016/11/22 (火)	5517	5288	148747	21636	36845	766766	110.81	111.12
2016/11/21 (月)	3457	3446	150328	20879	42706	779330	110.91	110.80
2016/11/18 (金)	5025	8211	170529	23840	49728	814369	110.21	110.82
2016/11/17 (木)	3358	10959	157311	21043	44844	800269	108.88	110.22

CAN Dollar	取扱高			当日含む前5営業日計			参考レート	
	CALL	PUT	FUTURE	CALL	PUT	FUTURE	Open	Close
2016/12/1 (木)	2944	2126	91022	7608	6707	415374	0.7446	0.7511
2016/11/30 (水)	1501	1568	109006	5147	5665	386266	0.7444	0.7446
2016/11/29 (火)	1501	1614	75090	4682	4741	348410	0.7461	0.7444
2016/11/28 (月)	894	961	78880	3780	3989	344394	0.7398	0.7460
2016/11/25 (金)	768	438	61376	3401	3859	334966	0.7413	0.7396
2016/11/23 (水)	483	1084	61914	3487	4467	340206	0.7442	0.7408
2016/11/22 (火)	1036	644	71150	4200	4614	349008	0.7450	0.7442
2016/11/21 (月)	599	862	71074	4191	4955	352719	0.7405	0.7451
2016/11/18 (金)	515	831	69452	5066	5532	359358	0.7395	0.7401
2016/11/17 (木)	854	1046	66616	6618	7572	378236	0.7443	0.7394

NZL Dollar	取扱高			当日含む前5営業日計			参考レート	
	CALL	PUT	FUTURE	CALL	PUT	FUTURE	Open	Close
2016/12/1 (木)	0	0	29602	0	0	129125	0.7087	0.7088
2016/11/30 (水)	0	0	23757	0	0	124404	0.7130	0.7087
2016/11/29 (火)	0	0	18424	0	0	113450	0.7081	0.7130
2016/11/28 (月)	0	0	29352	0	0	111665	0.7042	0.7080
2016/11/25 (金)	0	0	23269	0	0	126109	0.7003	0.7043
2016/11/23 (水)	0	0	18648	0	0	124040	0.7062	0.7005
2016/11/22 (火)	0	0	21972	0	0	128608	0.7071	0.7062
2016/11/21 (月)	0	0	32868	0	0	135034	0.6999	0.7071
2016/11/18 (金)	0	0	27283	0	0	144873	0.7023	0.7014
2016/11/17 (木)	0	0	27837	0	0	135266	0.7084	0.7023

MEX Peso	取扱高			当日含む前5営業日計			参考レート	
	CALL	PUT	FUTURE	CALL	PUT	FUTURE	Open	Close
2016/12/1 (木)	1	17	72745	36	694	230428	4.8627	4.8117
2016/11/30 (水)	1	133	43697	37	806	199494	4.8612	4.8599
2016/11/29 (火)	27	201	41556	37	776	194487	4.8418	4.8462
2016/11/28 (月)	5	337	37238	20	579	180275	4.8640	4.8429
2016/11/25 (金)	2	6	35192	28	268	196443	4.8306	4.8381
2016/11/23 (水)	2	129	41811	194	734	213604	4.8624	4.8265
2016/11/22 (火)	1	103	38690	199	669	222005	4.9143	4.8631
2016/11/21 (月)	10	4	27344	387	673	238825	4.8791	4.8919
2016/11/18 (金)	13	26	53406	590	862	291666	4.8718	4.8477
2016/11/17 (木)	168	472	52353	654	1443	362671	4.9485	4.9036

# 過去5日及び過去4週の4本値と各種ピボット

2016/11/28 ~ 2016/12/02

USD/JPY										Demark				Pivot				Fibonacci Zone												
当日のOHLCLから計算される翌日の										TD Range Projection				TD pivot points																
日足	Open	High	Low	Close	値幅/日	引け形態	真の高値	真の安値	予想高値	予想安値	予想高値	予想安値	StopLoss	Support	Pivot	Resistance	StopLoss	3-days AVG	Support Zone 2	Support Zone 1	BP	Resistance Zone 1	Resistance Zone 2							
													LBOP	S2	S1	PP	R1	R2	HBOP											
2016/11/28	112.88	112.97	111.36	111.83	161p	陰線引け	-	-					109.53	110.44	111.14	112.06	112.75	113.67	114.36											
2016/11/29	111.83	113.34	111.63	112.52	171p	陽線引け	113.34	111.63	113.78	112.07	113.78	112.07	109.94	110.78	111.65	112.49	113.36	114.20	115.07											
2016/11/30	112.52	114.54	112.07	114.38	247p	陽線引け	114.54	112.07	115.69	113.22	115.69	113.22	110.32	111.20	112.79	113.66	115.25	116.13	117.72	112.74	Bull	110.25	~ 111.20	112.14	~ 112.43	113.66	114.89	~ 115.18	116.13	~ 117.07
2016/12/01	114.38	114.83	113.85	114.18	98p	陰線引け	114.83	113.85	114.50	113.53	114.50	113.53	112.77	113.31	113.75	114.29	114.72	115.26	115.70	113.48	Bull	112.94	~ 113.31	113.68	~ 113.80	114.29	114.77	~ 114.89	115.26	~ 115.64
2016/12/02	114.18	114.19	113.33	113.56	86p	陰線引け	114.19	113.33	113.88	113.02	113.88	113.02	112.34	112.84	113.20	113.70	114.06	114.55	114.92	113.88	Bear	112.51	~ 112.84	113.17	~ 113.27	113.70	114.12	~ 114.23	114.55	~ 114.88
週足	Open	High	Low	Close	値幅/週	引け形態	真の高値	真の安値	予想高値	予想安値	予想高値	予想安値	LBOP	S2	S1	PP	R1	R2	HBOP	3-days AVG	Support Zone 2	Support Zone 1	BP	Resistance Zone 1	Resistance Zone 2					
2016/11/07 ~ 2016/11/11	103.86	106.95	101.17	106.78	578p	陽線引け	-	-					97.20	99.18	102.98	104.96	108.76	110.75	114.54											
2016/11/14 ~ 2016/11/18	106.83	110.92	106.74	110.82	418p	陽線引け	110.92	101.17	115.75	105.99	112.96	108.78	103.89	105.32	108.07	109.49	112.25	113.67	116.42											
2016/11/21 ~ 2016/11/25	110.91	113.90	110.28	113.09	362p	陽線引け	113.90	110.28	115.30	111.68	115.30	111.68	107.32	108.80	110.94	112.42	114.57	116.04	118.19	108.96	Bull	107.41	~ 108.80	110.18	~ 110.61	112.42	114.23	~ 114.66	116.04	~ 117.43
2016/11/28 ~ 2016/12/02	112.88	114.83	111.36	113.56	347p	陽線引け	114.83	111.36	115.93	112.46	115.93	112.46	108.21	109.79	111.67	113.25	115.14	116.72	118.60	111.72	Bull	108.46	~ 109.79	111.11	~ 111.52	113.25	114.98	~ 115.39	116.72	~ 118.04

EUR/JPY										Demark				Pivot				Fibonacci Zone												
当日のOHLCLから計算される翌日の										TD Range Projection				TD pivot points																
日足	Open	High	Low	Close	値幅/日	引け形態	真の高値	真の安値	予想高値	予想安値	予想高値	予想安値	StopLoss	Support	Pivot	Resistance	StopLoss	3-days AVG	Support Zone 2	Support Zone 1	BP	Resistance Zone 1	Resistance Zone 2							
													LBOP	S2	S1	PP	R1	R2	HBOP											
2016/11/28	119.64	119.71	118.66	118.69	104p	陰線引け	-	-					117.29	117.97	118.33	119.02	119.37	120.06	120.42											
2016/11/29	118.66	119.98	118.55	119.81	143p	陽線引け	119.98	118.55	120.61	119.18	120.61	119.18	117.49	118.02	118.92	119.45	120.34	120.87	121.77											
2016/11/30	119.82	121.31	119.46	121.20	184p	陽線引け	121.31	119.46	122.18	120.33	122.18	120.33	118.16	118.81	120.01	120.66	121.85	122.50	123.69	119.71	Bull	118.11	~ 118.81	119.52	~ 119.74	120.66	121.58	~ 121.80	122.50	~ 123.21
2016/12/01	121.20	121.80	120.86	121.70	95p	陰線引け	121.80	120.86	122.23	121.28	122.23	121.28	120.16	120.51	121.11	121.45	122.05	122.40	123.00	120.52	Bull	120.15	~ 120.51	120.87	~ 120.98	121.45	121.93	~ 122.04	122.40	~ 122.76
2016/12/02	121.71	121.89	120.88	121.12	101p	陰線引け	121.89	120.88	121.50	120.49	121.50	120.49	119.69	120.29	120.71	121.30	121.71	122.30	122.72	121.14	Bull	119.90	~ 120.29	120.67	~ 120.79	121.30	121.80	~ 121.92	122.30	~ 122.69
週足	Open	High	Low	Close	値幅/週	引け形態	真の高値	真の安値	予想高値	予想安値	予想高値	予想安値	LBOP	S2	S1	PP	R1	R2	HBOP	3-days AVG	Support Zone 2	Support Zone 1	BP	Resistance Zone 1	Resistance Zone 2					
2016/11/07 ~ 2016/11/11	115.13	116.57	113.68	115.83	289p	陽線引け	-	-					111.25	112.46	114.15	115.36	117.04	118.25	119.93											
2016/11/14 ~ 2016/11/18	115.78	117.48	115.55	117.41	193p	陽線引け	117.48	115.55	119.35	115.54	118.41	116.48	114.22	114.89	116.15	116.82	118.08	118.75	120.01											
2016/11/21 ~ 2016/11/25	117.43	120.16	117.31	119.79	285p	陽線引け	120.16	117.31	121.40	118.55	121.40	118.55	115.17	116.24	118.02	119.09	120.86	121.94	123.71	117.09	Bull	115.15	~ 116.24	117.33	~ 117.66	119.09	120.51	~ 120.85	121.94	~ 123.03
2016/11/28 ~ 2016/12/02	119.64	121.89	118.55	121.12	334p	陽線引け	121.89	118.55	123.17	119.83	123.17	119.83	115.81	117.18	119.15	120.52	122.49	123.86	125.82	118.81	Bull	115.91	~ 117.18	118.46	~ 118.85	120.52	122.19	~ 122.58	123.86	~ 125.13

EUR/USD										Demark				Pivot				Fibonacci Zone												
当日のOHLCLから計算される翌日の										TD Range Projection				TD pivot points																
日足	Open	High	Low	Close	値幅/日	引け形態	真の高値	真の安値	予想高値	予想安値	予想高値	予想安値	StopLoss	Support	Pivot	Resistance	StopLoss	3-days AVG	Support Zone 2	Support Zone 1	BP	Resistance Zone 1	Resistance Zone 2							
													LBOP	S2	S1	PP	R1	R2	HBOP											
2016/11/28	1.0599	1.0686	1.0564	1.0613	122p	陽線引け	-	-					1.0435	1.0499	1.0556	1.0621	1.0678	1.0742	1.0799											
2016/11/29	1.0611	1.0660	1.0565	1.0649	95p	陽線引け	1.0660	1.0565	1.0702	1.0607	1.0702	1.0607	1.0494	1.0530	1.0589	1.0625	1.0684	1.0720	1.0779											
2016/11/30	1.0649	1.0667	1.0553	1.0596	114p	陰線引け	1.0667	1.0553	1.0632	1.0518	1.0632	1.0518	1.0431	1.0492	1.0544	1.0605	1.0658	1.0719	1.0771	1.0617	Bear	1.0448	~ 1.0492	1.0535	~ 1.0549	1.0605	1.0662	~ 1.0676	1.0719	~ 1.0762
2016/12/01	1.0596	1.0668	1.0585	1.0659	84p	陽線引け	1.0668	1.0585	1.0705	1.0622	1.0705	1.0622	1.0523	1.0554	1.0606	1.0637	1.0690	1.0721	1.0774	1.0622	Bull	1.0522	~ 1.0554	1.0586	~ 1.0596	1.0637	1.0679	~ 1.0689	1.0721	~ 1.0753
2016/12/02	1.0659	1.0690	1.0625	1.0665	64p	陽線引け	1.0690	1.0625	1.0710	1.0645	1.0710	1.0645	1.0566	1.0596	1.0630	1.0660	1.0695	1.0725	1.0759	1.0634	Bull	1.0571	~ 1.0596	1.0620	~ 1.0628	1.0660	1.0692	~ 1.0700	1.0725	~ 1.0749
週足	Open	High	Low	Close	値幅/週	引け形態	真の高値	真の安値	予想高値	予想安値	予想高値	予想安値	LBOP	S2	S1	PP	R1	R2	HBOP	3-days AVG	Support Zone 2	Support Zone 1	BP	Resistance Zone 1	Resistance Zone 2					
2016/11/07 ~ 2016/11/11	1.1085	1.1296	1.0831	1.0847	466p	陰線引け	-	-					1.0221	1.0526	1.0687	1.0991	1.1152	1.1457	1.1618											
2016/11/14 ~ 2016/11/18	1.0839	1.0840	1.0570	1.0595	270p	陰線引け	1.0847	1.0595	1.0721	1.0468	1.0717	1.0447	1.0226	1.0398	1.0496	1.0668	1.0767	1.0938	1.1037											
2016/11/21 ~ 2016/11/25	1.0588	1.0658	1.0519	1.0593	139p	陽線引け	1.0658	1.0519	1.0695	1.0556	1.0695	1.0556	1.0383	1.0451	1.0522	1.0590	1.0661	1.0729	1.0800	1.0750	Bear	1.0398	~ 1.0451	1.0504	~ 1.0521	1.0590	1.0659	~ 1.0676	1.0729	~ 1.0782
2016/11/28 ~ 2016/12/02	1.0599	1.0690	1.0553	1.0665	137p	陽線引け	1.0690	1.0553	1.0746	1.0609	1.0746	1.0609	1.0446	1.0499	1.0582	1.0636	1.0719	1.0773	1.0856	1.0631	Bull	1.0447	~ 1.0499	1.0552	~ 1.0568	1.0636	1.0704	~ 1.0720	1.0773	~ 1.0825

GBP/JPY										Demark				Pivot				Fibonacci Zone						
当日のOHLCLから計算される翌日の										TD Range Projection				TD pivot points										
日足	Open	High	Low	Close	値幅/日	引け形態	真の高値	真の安値	予想高値	予想安値	予想高値	予想安値	StopLoss	Support	Pivot	Resistance	StopLoss	3-days AVG	Support Zone 2	Support Zone 1	BP	Resistance Zone 1	Resistance Zone 2	
													LBOP	S2	S1	PP	R1	R2	HBOP					
2016/11/28	140.75	140.85	138.84	138.85	201p	陰線引け	-	-					136.16	137.50	138.18	139.51	140.19	141.53	142.20					
2016/11/29	138.82	141.36	138.52	140.55	284p	陽線引け	141.36	138.52	142.38	139.53	142.38	139.53	136.08	137.30	138.92	140.14	141.77	142.99	144.61					
2016/11/30	140.54	143.26	139.99	143.11	327p	陽線引け	143.26	139.99	144.82															



# IMM扱い8通貨/ダウ/日経/金/オイル/主要クロス円の過去5日及び過去5週の4本値

AUDUSD					CADUSD					CHFUSD				
Date	Open	High	Low	Close	Date	Open	High	Low	Close	Date	Open	High	Low	Close
2016/12/02	0.7416	0.7469	0.7401	0.7451	2016/12/02	0.7511	0.7544	0.7508	0.7526	2016/12/02	0.9894	0.9923	0.9879	0.9894
2016/12/01	0.7388	0.7421	0.7371	0.7416	2016/12/01	0.7446	0.7518	0.7442	0.7511	2016/12/01	0.9834	0.9901	0.9829	0.9894
2016/11/30	0.7487	0.7497	0.7374	0.7388	2016/11/30	0.7444	0.7487	0.7427	0.7446	2016/11/30	0.9884	0.9893	0.9799	0.9834
2016/11/29	0.7488	0.7497	0.7433	0.7487	2016/11/29	0.7461	0.7462	0.7418	0.7444	2016/11/29	0.9868	0.9890	0.9827	0.9884
2016/11/28	0.7440	0.7494	0.7434	0.7489	2016/11/28	0.7397	0.7464	0.7387	0.7460	2016/11/28	0.9865	0.9921	0.9835	0.9870

CNYUSD					EURUSD					GBPUSD				
Date	Open	High	Low	Close	Date	Open	High	Low	Close	Date	Open	High	Low	Close
2016/12/02	0.1454	0.1456	0.1451	0.1454	2016/12/02	1.0659	1.0690	1.0625	1.0665	2016/12/02	1.2594	1.2728	1.2570	1.2728
2016/12/01	0.1445	0.1450	0.1445	0.1449	2016/12/01	1.0596	1.0668	1.0585	1.0659	2016/12/01	1.2512	1.2696	1.2507	1.2594
2016/11/30	0.1447	0.1450	0.1447	0.1450	2016/11/30	1.0649	1.0667	1.0553	1.0596	2016/11/30	1.2491	1.2523	1.2420	1.2512
2016/11/29	0.1444	0.1447	0.1443	0.1445	2016/11/29	1.0611	1.0660	1.0565	1.0649	2016/11/29	1.2414	1.2526	1.2389	1.2491
2016/11/28	0.1440	0.1445	0.1440	0.1442	2016/11/28	1.0599	1.0686	1.0564	1.0613	2016/11/28	1.2470	1.2532	1.2386	1.2416

JPYUSD					MXNUSD					NZDUSD				
Date	Open	High	Low	Close	Date	Open	High	Low	Close	Date	Open	High	Low	Close
2016/12/02	0.8758	0.8824	0.8757	0.8806	2016/12/02	0.0480	0.0486	0.0479	0.0484	2016/12/02	0.7088	0.7149	0.7086	0.7137
2016/12/01	0.8743	0.8783	0.8709	0.8758	2016/12/01	0.0486	0.0487	0.0480	0.0481	2016/12/01	0.7087	0.7105	0.7044	0.7088
2016/11/30	0.8888	0.8923	0.8731	0.8743	2016/11/30	0.0486	0.0489	0.0485	0.0486	2016/11/30	0.7130	0.7170	0.7071	0.7087
2016/11/29	0.8943	0.8959	0.8823	0.8888	2016/11/29	0.0484	0.0486	0.0483	0.0485	2016/11/29	0.7081	0.7133	0.7066	0.7130
2016/11/28	0.8859	0.8980	0.8852	0.8942	2016/11/28	0.0486	0.0488	0.0484	0.0484	2016/11/28	0.7042	0.7102	0.7034	0.7080

Nikkei 225 - Japonia (NIKKEI)					出来高	
Date	Open	High	Low	Close	(ドル建て終値)	出来高
2016/12/02	18435.55	18469.68	18315.38	18426.08	161.73	0 2833400800
2016/12/01	18535.24	18746.28	18469.27	18513.12	162.18	1879848832 2821416700
2016/11/30	18356.03	18370.31	18280.66	18308.48	162.42	1646889344 2671166200
2016/11/29	18263.63	18327.51	18258.82	18307.04	163.00	1256381952 1956011100
2016/11/28	18302.58	18374.93	18222.82	18356.89	163.94	1450266112 2185698300
週4本値	18302.58	18746.28	18222.82	18426.08	161.73	(N225銘柄計) (東証一部全体計)

XAUUSD					
Date	Open	High	Low	Close	Volume
2016/12/02	1172.51	1178.03	1166.97	1175.78	0
2016/12/01	1173.53	1176.82	1160.92	1171.61	0
2016/11/30	1187.75	1195.00	1170.88	1173.32	0
2016/11/29	1194.04	1195.05	1181.13	1188.31	0
2016/11/28	1185.14	1197.69	1183.00	1193.82	0
週4本値	1185.14	1197.69	1160.92	1175.78	

Dow Jones Industrial - USA (DJIA)					
Date	Open	High	Low	Close	出来高
2016/12/02	19161.25	19196.14	19141.18	19170.42	84921158
2016/12/01	19149.20	19214.30	19138.79	19191.93	108800978
2016/11/30	19135.64	19225.29	19123.38	19123.58	164573915
2016/11/29	19064.07	19144.40	19062.22	19121.60	81510739
2016/11/28	19122.14	19138.72	19072.25	19097.90	88459343
週4本値	19122.14	19225.29	19062.22	19170.42	84921158

Historical Data by **Stooq**  
 Historical Data by **MarketNewsline** (ダウと日経)  
 Arrangement by **FX\_勝てば官軍?**

Crude Light Oil						
Date	Open	High	Low	Close	Volume	
2016/12/02	51.06	51.72	50.19	51.69	0	
2016/12/01	49.07	51.77	49.05	50.91	0	
2016/11/30	45.34	49.87	45.26	49.01	0	
2016/11/29	46.92	46.98	44.88	45.26	1222871	
2016/11/28	45.56	47.63	45.16	46.91	1161013	
週4本値	45.56	51.77	44.88	51.69		

USDJPY					EURJPY					GBPJPY				
日付	始値	高値	安値	終値	日付	始値	高値	安値	終値	日付	始値	高値	安値	終値
2016/12/02	114.18	114.19	113.33	113.56	2016/12/02	121.71	121.89	120.88	121.12	2016/12/02	143.79	144.66	142.93	144.54
2016/12/01	114.38	114.83	113.85	114.18	2016/12/01	121.20	121.80	120.86	121.70	2016/12/01	143.11	145.20	142.66	143.79
2016/11/30	112.52	114.54	112.07	114.38	2016/11/30	119.82	121.31	119.46	121.20	2016/11/30	140.54	143.26	139.99	143.11
2016/11/29	111.83	113.34	111.63	112.52	2016/11/29	118.66	119.98	118.55	119.81	2016/11/29	138.82	141.36	138.52	140.55
2016/11/28	112.88	112.97	111.36	111.83	2016/11/28	119.64	119.71	118.66	118.69	2016/11/28	140.75	140.85	138.84	138.85

USDJPY Weekly					EURJPY Weekly					GBPJPY Weekly				
日付	始値	高値	安値	終値	日付	始値	高値	安値	終値	日付	始値	高値	安値	終値
2016/12/02	112.88	114.83	111.36	113.56	2016/12/02	119.64	121.89	118.55	121.12	2016/12/02	140.75	145.20	138.52	144.54
2016/11/25	110.91	113.90	110.28	113.09	2016/11/25	117.43	120.16	117.31	119.79	2016/11/25	136.98	141.75	136.30	140.93
2016/11/18	106.83	110.92	106.74	110.82	2016/11/18	115.78	117.48	115.55	117.41	2016/11/18	134.33	137.59	134.20	136.93
2016/11/11	103.86	106.95	101.17	106.78	2016/11/11	115.13	116.57	113.68	115.83	2016/11/11	129.53	134.91	126.66	134.51
2016/11/04	104.62	105.23	102.55	103.11	2016/11/04	114.85	115.68	114.02	114.85	2016/11/04	127.56	129.45	126.50	129.10



# 先週のIMM取り扱い対ドル8通貨チャート

※ 赤点線は週最高値/青点線は週最低値、BB中心線はSMA21

2016/11/28 ~ 2016/12/02

Chart by OANDA Japan MetaTrader4

