

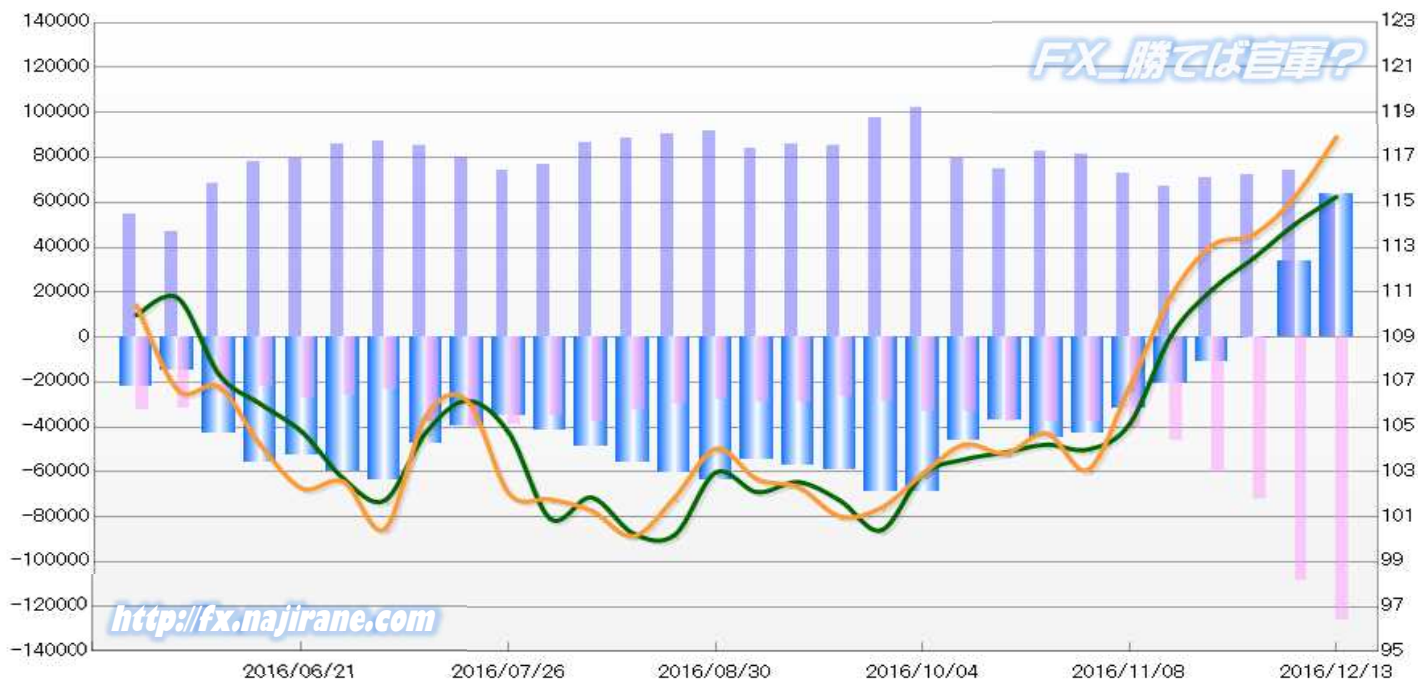
JAPANESE YEN - CHICAGO MERCANTILE EXCHANGE
2016/06/21 ~ 2016/12/13

Code-097741
 2016/12/16 NYクロース時公表値

Report_Date	Non Commercial Positions												火曜日 引け値	金曜日 引け値
	Long	増減	増減(%)	Short	増減	増減(%)	売り越し	増減	増減(%)	売買計	増減	増減(%)		
2016/12/13	62432	-11935	-16.0%	125861	17557	16.2%	63429	29492	86.9%	188293	5622	3.1%	115.25	117.91
2016/12/06	74367	2243	3.1%	108304	35911	49.6%	33937	33668	12516.0%	182671	38154	26.4%	114.03	115.25
2016/11/29	72124	941	1.3%	72393	12110	20.1%	269	-11169	-102.5%	144517	13051	9.9%	112.52	113.56
2016/11/22	71183	4098	6.1%	60283	13874	29.9%	-10900	-9776	-47.3%	131466	17972	15.8%	111.12	113.09
2016/11/15	67085	-5534	-7.6%	46409	5746	14.1%	-20676	-11280	-35.3%	113494	212	0.2%	109.05	110.82
2016/11/08	72619	-8391	-10.4%	40663	2813	7.4%	-31956	-11204	-26.0%	113282	-5578	-4.7%	105.13	106.78
2016/11/01	81010	-1375	-1.7%	37850	60	0.2%	-43160	-1435	-3.2%	118860	-1315	-1.1%	104.00	103.11
2016/10/25	82385	7419	9.9%	37790	-185	-0.5%	-44595	7604	20.6%	120175	7234	6.4%	104.22	104.71
2016/10/18	74966	-4313	-5.4%	37975	4605	13.8%	-36991	-8918	-19.4%	112941	292	0.3%	103.87	103.83
2016/10/11	79279	-22707	-22.3%	33370	79	0.2%	-45909	-22786	-33.2%	112649	-22628	-16.7%	103.56	104.22
2016/10/04	101986	4554	4.7%	33291	4751	16.6%	-68695	-197	-0.3%	135277	9305	7.4%	102.90	102.91
2016/09/27	97432	12315	14.5%	28540	2208	8.4%	-68892	10107	17.2%	125972	14523	13.0%	100.41	101.41
2016/09/20	85117	-1023	-1.2%	26332	-2962	-10.1%	-58785	1939	3.4%	111449	-3985	-3.5%	101.73	101.03
2016/09/13	86140	2172	2.6%	29294	-185	-0.6%	-56846	2357	4.3%	115434	1987	1.8%	102.55	102.32
2016/09/06	83968	-7602	-8.3%	29479	1570	5.6%	-54489	-9172	-14.4%	113447	-6032	-5.0%	102.10	102.68
2016/08/30	91570	1183	1.3%	27909	-2162	-7.2%	-63661	3345	5.5%	119479	-979	-0.8%	102.98	104.03
2016/08/23	90387	2114	2.4%	30071	-2196	-6.8%	-60316	4310	7.7%	120458	-82	-0.1%	100.19	101.84
2016/08/16	88273	1554	1.8%	32267	-5621	-14.8%	-56006	7175	14.7%	120540	-4067	-3.3%	100.27	100.14
2016/08/09	86719	10144	13.2%	37888	3013	8.6%	-48831	7131	17.1%	124607	13157	11.8%	101.86	101.28
2016/08/02	76575	2501	3.4%	34875	-4241	-10.8%	-41700	6742	19.3%	111450	-1740	-1.5%	100.92	101.78
2016/07/26	74074	-5790	-7.2%	39116	-1395	-3.4%	-34958	-4395	-11.2%	113190	-7185	-6.0%	104.74	102.05
2016/07/19	79864	-5500	-6.4%	40511	2692	7.1%	-39353	-8192	-17.2%	120375	-2808	-2.3%	106.17	106.16
2016/07/12	85364	-1673	-1.9%	37819	14350	61.1%	-47545	-16023	-25.2%	123183	12677	11.5%	104.76	105.49
2016/07/05	87037	1544	1.8%	23469	-2274	-8.8%	-63568	3818	6.4%	110506	-730	-0.7%	101.74	100.47
2016/06/28	85493	6095	7.7%	25743	-1359	-5.0%	-59750	7454	14.3%	111236	4736	4.4%	102.71	102.57
2016/06/21	79398			27102			-52296			106500			104.78	102.27

JAPANESE YEN - CHICAGO MERCANTILE EXCHANGE
FUTURES ONLY POSITIONS

— 金曜終値 — 火曜終値 — Short枚数 — Long枚数 — 売り越し枚数(マイナスの場合は買越しと読替え)



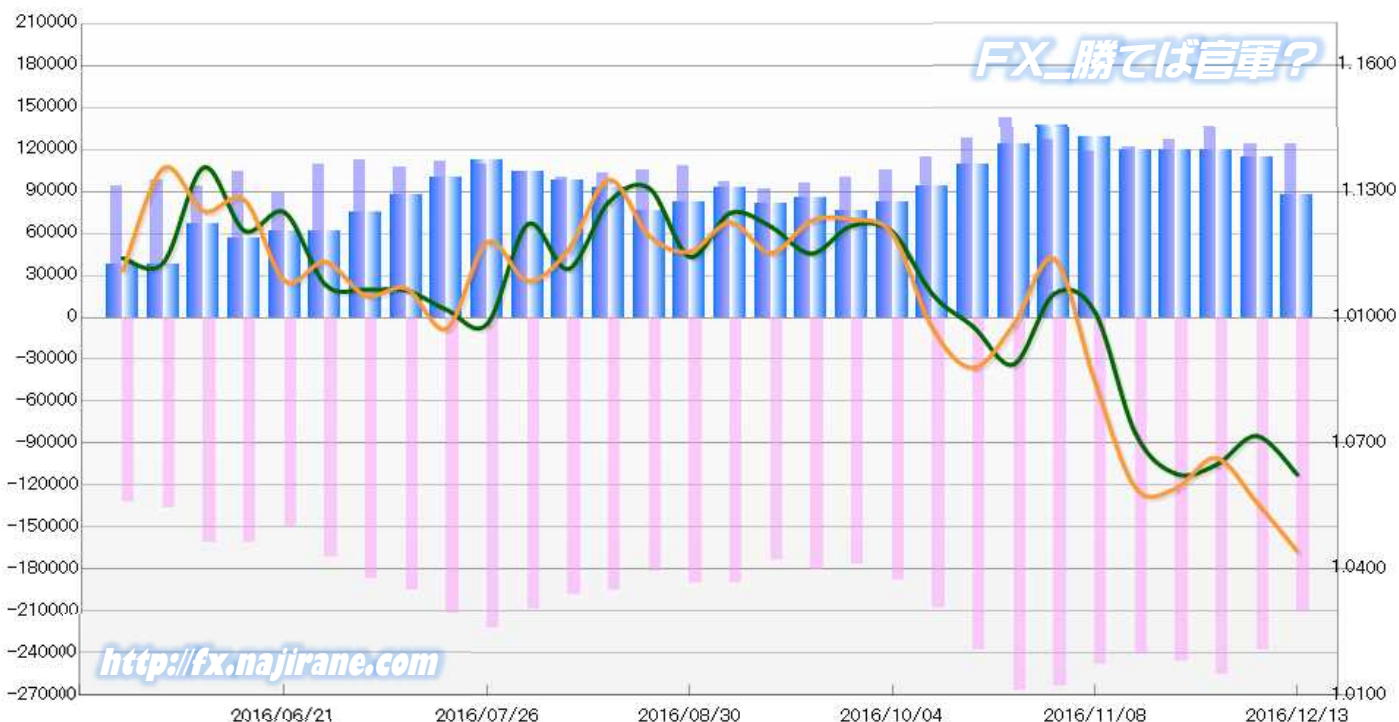
EURO FX - CHICAGO MERCANTILE EXCHANGE
2016/06/21 ~ 2016/12/13

Code-099741
2016/12/16 NYクローズ時公表値

Report_Date	Non Commercial Positions												火曜日 引け値	金曜日 引け値
	Long	増減		Short	増減		売り越し	増減		売買計	増減			
2016/12/13	123597	207	0.2%	211110	-26836	-11.3%	87513	-27043	-23.6%	334707	-26629	-7.4%	1.0626	1.0443
2016/12/06	123390	-12718	-9.3%	237946	-17402	-6.8%	114556	-4684	-3.9%	361336	-30120	-7.7%	1.0718	1.0559
2016/11/29	136108	8986	7.1%	255348	8878	3.6%	119240	-108	-0.1%	391456	17864	4.8%	1.0649	1.0665
2016/11/22	127122	5547	4.6%	246470	5713	2.4%	119348	166	0.1%	373592	11260	3.1%	1.0628	1.0593
2016/11/15	121575	2678	2.3%	240757	-7454	-3.0%	119182	-10132	-7.8%	362332	-4776	-1.3%	1.0724	1.0595
2016/11/08	118897	-7546	-6.0%	248211	-15617	-5.9%	129314	-8071	-5.9%	367108	-23163	-5.9%	1.1013	1.0847
2016/11/01	126443	-16438	-11.5%	263828	-2909	-1.1%	137385	13529	10.9%	390271	-19347	-4.7%	1.1056	1.1139
2016/10/25	142881	14700	11.5%	266737	29288	12.3%	123856	14588	13.4%	409618	43988	12.0%	1.0889	1.0984
2016/10/18	128181	13897	12.2%	237449	29693	14.3%	109268	15796	16.9%	365630	43590	13.5%	1.0978	1.0880
2016/10/11	114284	8650	8.2%	207756	20063	10.7%	93472	11413	13.9%	322040	28713	9.8%	1.1054	1.0972
2016/10/04	105634	5142	5.1%	187693	11171	6.3%	82059	6029	7.9%	293327	16313	5.9%	1.1204	1.1199
2016/09/27	100492	4794	5.0%	176522	-4201	-2.3%	76030	-8995	-10.6%	277014	593	0.2%	1.1219	1.1233
2016/09/20	95698	3915	4.3%	180723	7465	4.3%	85025	3550	4.4%	276421	11380	4.3%	1.1152	1.1230
2016/09/13	91783	-5541	-5.7%	173258	-16696	-8.8%	81475	-11155	-12.0%	265041	-22237	-7.7%	1.1217	1.1154
2016/09/06	97324	-10937	-10.1%	189954	-232	-0.1%	92630	10705	13.1%	287278	-11169	-3.7%	1.1249	1.1226
2016/08/30	108261	2887	2.7%	190186	8154	4.5%	81925	5267	6.9%	298447	11041	3.8%	1.1144	1.1157
2016/08/23	105374	2314	2.2%	182032	-13536	-6.9%	76658	-15850	-17.1%	287406	-11222	-3.8%	1.1308	1.1195
2016/08/16	103060	2618	2.6%	195568	-3273	-1.6%	92508	-5891	-6.0%	298628	-655	-0.2%	1.1275	1.1328
2016/08/09	100442	-4074	-3.9%	198841	-9778	-4.7%	98399	-5704	-5.5%	299283	-13852	-4.4%	1.1115	1.1161
2016/08/02	104516	-4677	-4.3%	208619	-13174	-5.9%	104103	-8497	-7.5%	313135	-17851	-5.4%	1.1222	1.1087
2016/07/26	109193	-2385	-2.1%	221793	10324	4.9%	112600	12709	12.7%	330986	7939	2.5%	1.0985	1.1179
2016/07/19	111578	3943	3.7%	211469	16174	8.3%	99891	12231	14.0%	323047	20117	6.6%	1.1018	1.0974
2016/07/12	107635	-4376	-3.9%	195295	7957	4.2%	87660	12333	16.4%	302930	3581	1.2%	1.1065	1.1069
2016/07/05	112011	2431	2.2%	187338	15824	9.2%	75327	13393	21.6%	299349	18255	6.5%	1.1066	1.1052
2016/06/28	109580	20941	23.6%	171514	21529	14.4%	61934	588	1.0%	281094	42470	17.8%	1.1078	1.1132
2016/06/21	88639			149985			61346			238624			1.1250	1.1087

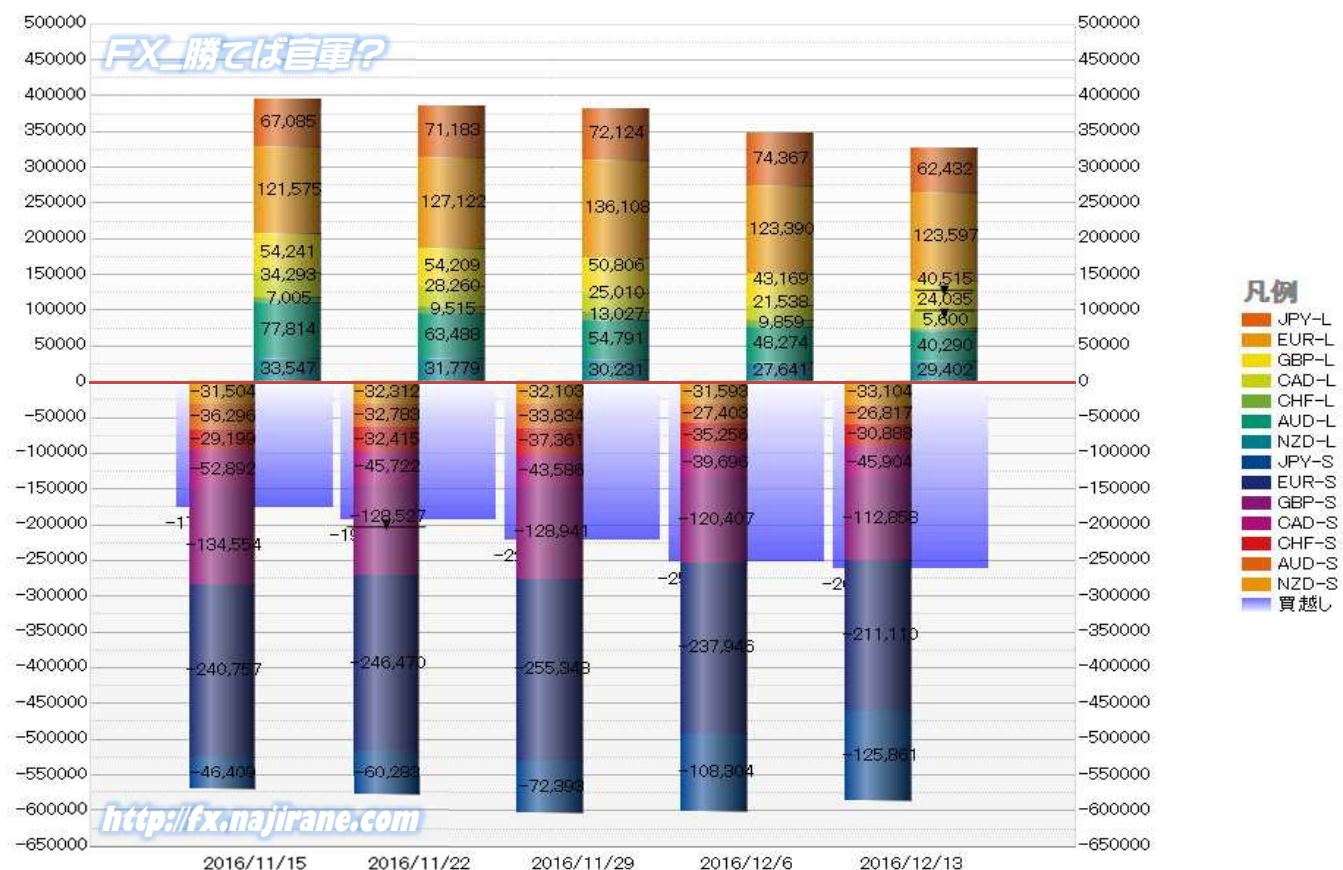
EURO FX - CHICAGO MERCANTILE EXCHANGE
FUTURES ONLY POSITIONS

— 金曜締め週終値 — 火曜締め週終値 — Short枚数 — Long枚数 — 売り越し枚数(マイナスの場合は買越しと読替え)



	2016/11/15			2016/11/22			2016/11/29			2016/12/06			2016/12/13		
	Long	Short	売り越し	Long	Short	売り越し	Long	Short	売り越し	Long	Short	売り越し	Long	Short	売り越し
JPY	67085	46409	-20676	71183	60283	-10900	72124	72393	269	74367	108304	33937	62432	125861	63429
	前週比 枚数増減 (枚)			4098	13874	-9776	941	12110	-10631	2243	35911	33668	-11935	17557	29492
	前週比 枚数増減 (%)			6.11%	29.90%	-47.28%	1.32%	20.09%	-102.47%	3.11%	49.61%	12515.99%	-16.05%	16.21%	86.90%
EUR	121575	240757	119182	127122	246470	119348	136108	255348	119240	123390	237946	114556	123597	211110	87513
	前週比 枚数増減 (枚)			5547	5713	166	8986	8878	-108	-12718	-17402	-4684	207	-26836	-27043
	前週比 枚数増減 (%)			4.56%	2.37%	0.14%	7.07%	3.60%	-0.09%	-9.34%	-6.82%	-3.93%	0.17%	-11.28%	-23.61%
GBP	54241	134554	80313	54209	128527	74318	50806	128941	78135	43169	120407	77238	40515	112858	72343
	前週比 枚数増減 (枚)			-32	-6027	-5995	-3403	414	3817	-7637	-8534	-897	-2654	-7549	-4895
	前週比 枚数増減 (%)			-0.06%	-4.48%	-7.46%	-6.28%	0.32%	5.14%	-15.03%	-6.62%	-1.15%	-6.15%	-6.27%	-6.34%
AUD	77814	36296	-41518	63488	32783	-30705	54791	33834	-20957	48274	27403	-20871	40290	26817	-13473
	前週比 枚数増減 (枚)			-14326	-3513	-10813	-8697	1051	-9748	-6517	-6431	-86	-7984	-586	-7398
	前週比 枚数増減 (%)			-18.41%	-9.68%	-26.04%	-13.70%	3.21%	-31.75%	-11.89%	-19.01%	-0.41%	-16.54%	-2.14%	-35.45%
CAD	34293	52892	18599	28260	45722	17462	25010	43586	18576	21538	39696	18158	24035	45904	21869
	前週比 枚数増減 (枚)			-6033	-7170	-1137	-3250	-2136	1114	-3472	-3890	-418	2497	6208	3711
	前週比 枚数増減 (%)			-17.59%	-13.56%	-6.11%	-11.50%	-4.67%	6.38%	-13.88%	-8.92%	-2.25%	11.59%	15.64%	20.44%
CHF	7005	29199	22194	9515	32415	22900	13027	37361	24334	9859	35256	25397	5600	30888	25288
	前週比 枚数増減 (枚)			2510	3216	706	3512	4946	1434	-3168	-2105	1063	-4259	-4368	-109
	前週比 枚数増減 (%)			35.83%	11.01%	3.18%	36.91%	15.26%	6.26%	-24.32%	-5.63%	4.37%	-43.20%	-12.39%	-0.43%
NZD	33547	31504	-2043	31779	32312	533	30231	32103	1872	27641	31593	3952	29402	33104	3702
	前週比 枚数増減 (枚)			-1768	808	-1510	-1548	-209	1339	-2590	-510	2080	1761	1511	-250
	前週比 枚数増減 (%)			-5.27%	2.56%	-126.09%	-4.87%	-0.65%	251.22%	-8.57%	-1.59%	111.11%	6.37%	4.78%	-6.33%
MXN	22124	67277	45153	19884	68198	48314	19314	73814	54500	18619	72685	54066	19001	76660	57659
	前週比 枚数増減 (枚)			-2240	921	3161	-570	5616	6186	-695	-1129	-434	382	3975	3593
	前週比 枚数増減 (%)			-10.12%	1.37%	7.00%	-2.87%	8.23%	12.80%	-3.60%	-1.53%	-0.80%	2.05%	5.47%	6.65%
Total All 8	417684	638888	221204	405440	646710	241270	401411	677380	275969	366857	673290	306433	344872	663202	318330
	前週比 枚数増減 (枚)			-12244	7822	20066	-4029	30670	34699	-34554	-4090	30464	-21985	-10088	11897
	前週比 枚数増減 (%)			-2.93%	1.22%	9.07%	-0.99%	4.74%	14.38%	-8.61%	-0.60%	11.04%	-5.99%	-1.50%	3.88%
Total 7 (MXN除く)	395560	571611	176051	385556	578512	192956	382097	603566	221469	348238	600605	252367	325871	586542	260671
	前週比 枚数増減 (枚)			-10004	6901	16905	-3459	25054	28513	-33859	-2961	30898	-22367	-14063	8304
	前週比 枚数増減 (%)			-2.5%	1.2%	9.6%	-0.9%	4.3%	14.8%	-8.9%	-0.5%	14.0%	-6.4%	-2.3%	3.3%

直近5週 CFTC IMM主要7通貨の構成

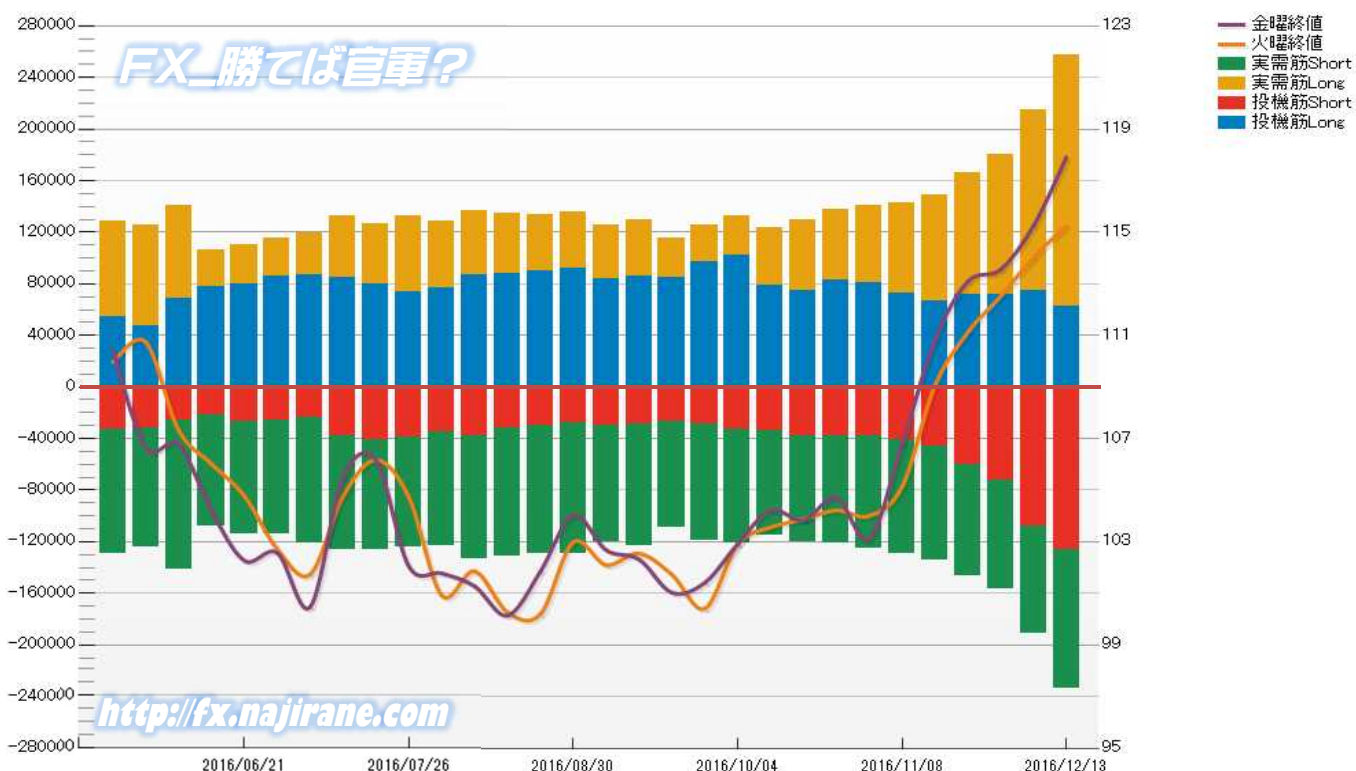


JAPANESE YEN - CHICAGO MERCANTILE EXCHANGE
FUTURES ONLY POSITIONS

Code-097741
2016/12/16 公表値

Date	投機筋集計				実需筋集計				投機筋+実需筋合計				ドル円終値	
	円買い	円売り	売り越し	売買計	円買い	円売り	売り越し	売買計	円買い	円売り	売り越し	売買計	火曜締め	金曜締め
2016/12/13	62432	125861	63429	188293	194893	107464	-87429	302357	257325	233325	-24000	490650	115.25	117.91
2016/12/06	74367	108304	33937	182671	140357	83264	-57093	223621	214724	191568	-23156	406292	114.03	115.25
2016/11/29	72124	72393	269	144517	108163	83995	-24168	192158	180287	156388	-23899	336675	112.52	113.56
2016/11/22	71183	60283	-10900	131466	95166	86202	-8964	181368	166349	146485	-19864	312834	111.12	113.09
2016/11/15	67085	46409	-20676	113494	81503	88408	6905	169911	148588	134817	-13771	283405	109.05	110.82
2016/11/08	72619	40663	-31956	113282	69838	88139	18301	157977	142457	128802	-13655	271259	105.13	106.78
2016/11/01	81010	37850	-43160	118860	59272	87511	28239	146783	140282	125361	-14921	265643	104.00	103.11
2016/10/25	82385	37790	-44595	120175	55555	83712	28157	139267	137940	121502	-16438	259442	104.22	104.71
2016/10/18	74966	37975	-36991	112941	54359	81884	27525	136243	129325	119859	-9466	249184	103.87	103.83
2016/10/11	79279	33370	-45909	112649	43806	81544	37738	125350	123085	114914	-8171	237999	103.56	104.22
2016/10/04	101986	33291	-68695	135277	30627	87820	57193	118447	132613	121111	-11502	253724	102.90	102.91
2016/09/27	97432	28540	-68892	125972	28326	90589	62263	118915	125758	119129	-6629	244887	100.41	101.41
2016/09/20	85117	26332	-58785	111449	29715	83021	53306	112736	114832	109353	-5479	224185	101.73	101.03
2016/09/13	86140	29294	-56846	115434	43492	93700	50208	137192	129632	122994	-6638	252626	102.55	102.32
2016/09/06	83968	29479	-54489	113447	41120	91024	49904	132144	125088	120503	-4585	245591	102.10	102.68
2016/08/30	91570	27909	-63661	119479	44366	101570	57204	145936	135936	129479	-6457	265415	102.98	104.03
2016/08/23	90387	30071	-60316	120458	43245	99482	56237	142727	133632	129553	-4079	263185	100.19	101.84
2016/08/16	88273	32267	-56006	120540	46280	99196	52916	145476	134553	131463	-3090	266016	100.27	100.14
2016/08/09	86719	37888	-48831	124607	49619	95343	45724	144962	136338	133231	-3107	269569	101.86	101.28
2016/08/02	76575	34875	-41700	111450	51707	88074	36367	139781	128282	122949	-5333	251231	100.92	101.78
2016/07/26	74074	39116	-34958	113190	58947	85458	26511	144405	133021	124574	-8447	257595	104.74	102.05
2016/07/19	79864	40511	-39353	120375	46993	85719	38726	132712	126857	126230	-627	253087	106.17	106.16
2016/07/12	85364	37819	-47545	123183	46842	88850	42008	135692	132206	126669	-5537	258875	104.76	105.49
2016/07/05	87037	23469	-63568	110506	32637	97652	65015	130289	119674	121121	1447	240795	101.74	100.47
2016/06/28	85493	25743	-59750	111236	30249	88316	58067	118565	115742	114059	-1683	229801	102.71	102.57
2016/06/21	79398	27102	-52296	106500	30450	86992	56542	117442	109848	114094	4246	223942	104.78	102.27
2016/06/14	77703	22013	-55690	99716	28678	86062	57384	114740	106381	108075	1694	214456	106.02	104.19
2016/06/07	68237	25384	-42853	93621	72616	116477	43861	189093	140853	141861	1008	282714	107.33	106.78
2016/05/31	46964	32127	-14837	79091	78749	92275	13526	171024	125713	124402	-1311	250115	110.74	106.64
2016/05/24	54792	32733	-22059	87525	73603	96638	23035	170241	128395	129371	976	257766	109.98	110.42

JAPANESE YEN - CHICAGO MERCANTILE EXCHANGE
FUTURES ONLY POSITIONS Code-097741

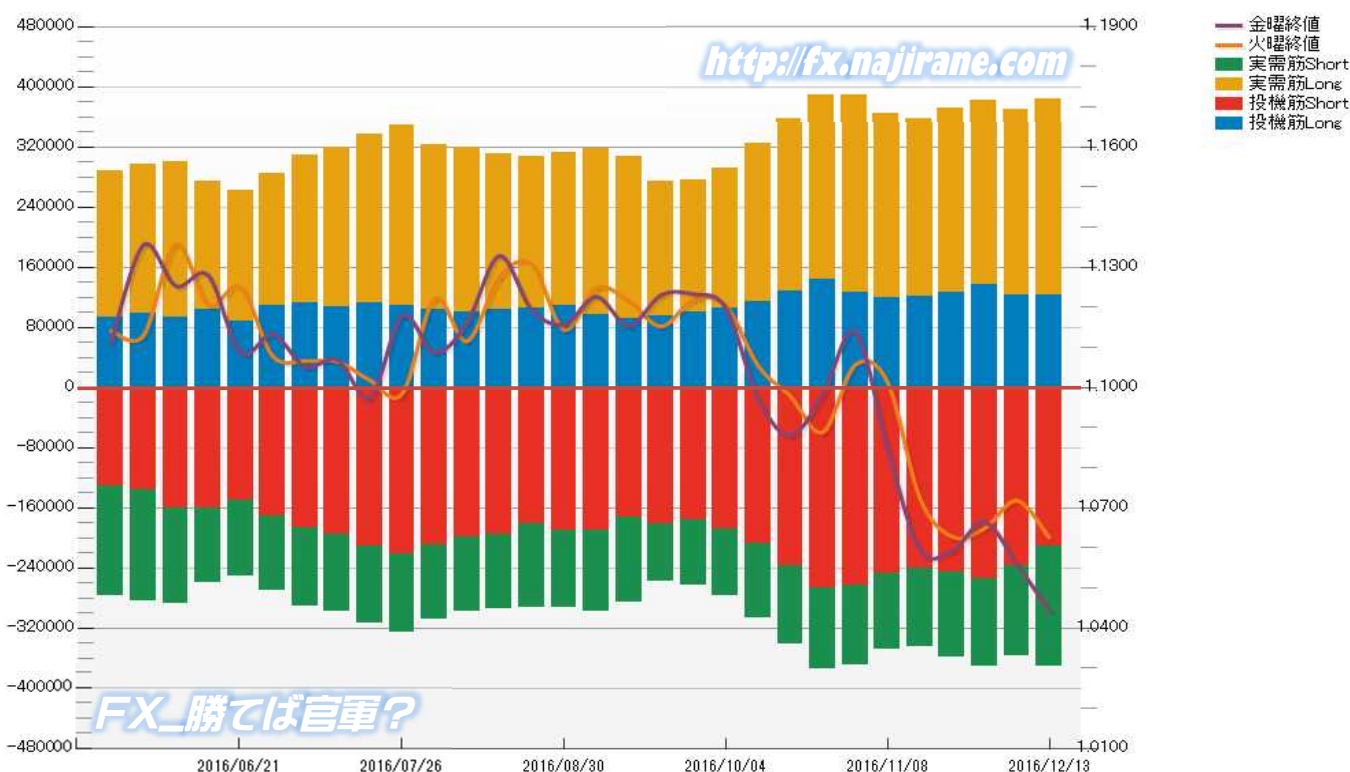


**EURO FX - CHICAGO MERCANTILE EXCHANGE
FUTURES ONLY POSITIONS**

**Code-099741
2016/12/16 公表値**

Date	投机筋集計				実需筋集計				投机筋+実需筋合計				ユーロドル終値	
	EUR買い	EUR売り	売り越し	売買計	EUR買い	EUR売り	売り越し	売買計	EUR買い	EUR売り	売り越し	売買計	火曜締め	金曜締め
2016/12/13	123597	211110	87513	334707	259537	160236	-99301	419773	383134	371346	-11788	754480	1.0626	1.0443
2016/12/06	123390	237946	114556	361336	246681	120065	-126616	366746	370071	358011	-12060	728082	1.0718	1.0559
2016/11/29	136108	255348	119240	391456	245355	116561	-128794	361916	381463	371909	-9554	753372	1.0649	1.0665
2016/11/22	127122	246470	119348	373592	243796	111726	-132070	355522	370918	358196	-12722	729114	1.0628	1.0593
2016/11/15	121575	240757	119182	362332	235596	104624	-130972	340220	357171	345381	-11790	702552	1.0724	1.0595
2016/11/08	118897	248211	129314	367108	245616	101035	-144581	346651	364513	349246	-15267	713759	1.1013	1.0847
2016/11/01	126443	263828	137385	390271	261922	105533	-156389	367455	388365	369361	-19004	757726	1.1056	1.1139
2016/10/25	142881	266737	123856	409618	246230	108147	-138083	354377	389111	374884	-14227	763995	1.0889	1.0984
2016/10/18	128181	237449	109268	365630	230197	104790	-125407	334987	358378	342239	-16139	700617	1.0978	1.0880
2016/10/11	114284	207756	93472	322040	209879	99131	-110748	309010	324163	306887	-17276	631050	1.1054	1.0972
2016/10/04	105634	187693	82059	293327	186827	89483	-97344	276310	292461	277176	-15285	569637	1.1204	1.1199
2016/09/27	100492	176522	76030	277014	174828	86986	-87842	261814	275320	263508	-11812	538828	1.1219	1.1233
2016/09/20	95698	180723	85025	276421	177910	77967	-99943	255877	273608	258690	-14918	532298	1.1152	1.1230
2016/09/13	91783	173258	81475	265041	216048	112825	-103223	328873	307831	286083	-21748	593914	1.1217	1.1154
2016/09/06	97324	189954	92630	287278	220781	107441	-113340	328222	318105	297395	-20710	615500	1.1249	1.1226
2016/08/30	108261	190186	81925	298447	204241	103433	-100808	307674	312502	293619	-18883	606121	1.1144	1.1157
2016/08/23	105374	182032	76658	287406	202180	111006	-91174	313186	307554	293038	-14516	600592	1.1308	1.1195
2016/08/16	103060	195568	92508	298628	208203	99798	-108405	308001	311263	295366	-15897	606629	1.1275	1.1328
2016/08/09	100442	198841	98399	299283	218984	99470	-119514	318454	319426	298311	-21115	617737	1.1115	1.1161
2016/08/02	104516	208619	104103	313135	218778	99452	-119326	318230	323294	308071	-15223	631365	1.1222	1.1087
2016/07/26	109193	221793	112600	330986	239073	103338	-135735	342411	348266	325131	-23135	673397	1.0985	1.1179
2016/07/19	111578	211469	99891	323047	225909	101654	-124255	327563	337487	313123	-24364	650610	1.1018	1.0974
2016/07/12	107635	195295	87660	302930	211520	103371	-108149	314891	319155	298666	-20489	617821	1.1065	1.1069
2016/07/05	112011	187338	75327	299349	197845	104095	-93750	301940	309856	291433	-18423	601289	1.1066	1.1052
2016/06/28	109580	171514	61934	281094	175747	99094	-76653	274841	285327	270608	-14719	555935	1.1078	1.1132
2016/06/21	88639	149985	61346	238624	174231	100833	-73398	275064	262870	250818	-12052	513688	1.1250	1.1087
2016/06/14	104510	160999	56489	265509	168953	98248	-70705	267201	273463	259247	-14216	532710	1.1207	1.1280
2016/06/07	93492	160604	67112	254096	207448	127910	-79538	335358	300940	288514	-12426	589454	1.1357	1.1253
2016/05/31	98218	135872	37654	234090	198726	148012	-50714	346738	296944	283884	-13060	580828	1.1130	1.1356
2016/05/24	93955	131850	37895	225805	193758	145257	-48501	339015	287713	277107	-10606	564820	1.1141	1.1111

**EURO FX - CHICAGO MERCANTILE EXCHANGE
FUTURES ONLY POSITIONS Code-099741**



CME Daily Volume

シカゴ・マーカントイル取引所 取扱高日次データ

FX_勝てば官軍?

<http://fx.najirane.com>

EU Euro	取扱高			当日含む前5営業日計			参考レート	
	CALL	PUT	FUTURE	CALL	PUT	FUTURE	Open	Close
2016/12/15 (木)	8881	17866	582777	38241	45408	2047259	1.0527	1.0421
2016/12/14 (水)	5984	6127	513594	51316	55899	1852457	1.0626	1.0528
2016/12/13 (火)	2700	3863	319118	53374	60224	1489710	1.0640	1.0626
2016/12/12 (月)	8026	4979	357314	61903	79181	1402121	1.0547	1.0640
2016/12/9 (金)	12650	12573	274456	72715	93621	1362166	1.0613	1.0559
2016/12/8 (木)	21956	28357	387975	75107	98622	1285928	1.0758	1.0613
2016/12/7 (水)	8042	10452	150847	64130	83247	1133574	1.0719	1.0758
2016/12/6 (火)	11229	22820	231529	71983	91417	1254396	1.0758	1.0718
2016/12/5 (月)	18838	19419	317359	74065	78118	1221749	1.0534	1.0758
2016/12/2 (金)	15042	17574	198218	61840	68968	1117048	1.0659	1.0665

AUS Dollar	取扱高			当日含む前5営業日計			参考レート	
	CALL	PUT	FUTURE	CALL	PUT	FUTURE	Open	Close
2016/12/15 (木)	1199	2695	168200	3001	4329	588204	0.7398	0.7363
2016/12/14 (水)	678	760	164647	3099	2726	530038	0.7494	0.7398
2016/12/13 (火)	404	221	93452	4841	2917	449522	0.7498	0.7494
2016/12/12 (月)	154	128	77375	5068	3311	424055	0.7439	0.7498
2016/12/9 (金)	566	525	84530	6012	4413	442923	0.7448	0.7453
2016/12/8 (木)	1297	1092	110034	7210	5651	443924	0.7482	0.7448
2016/12/7 (水)	2420	951	84131	7630	5684	432238	0.7460	0.7483
2016/12/6 (火)	631	615	67985	7826	6873	468168	0.7472	0.7460
2016/12/5 (月)	1098	1230	96243	8368	6804	485379	0.7413	0.7472
2016/12/2 (金)	1764	1763	85531	8200	7784	475070	0.7416	0.7451

CHE Franc	取扱高			当日含む前5営業日計			参考レート	
	CALL	PUT	FUTURE	CALL	PUT	FUTURE	Open	Close
2016/12/15 (木)	197	0	6	770	0	438	0.9800	0.9707
2016/12/14 (水)	142	0	271	586	0	614	0.9879	0.9797
2016/12/13 (火)	88	0	0	474	0	346	0.9870	0.9879
2016/12/12 (月)	135	0	59	416	0	439	0.9827	0.9870
2016/12/9 (金)	208	0	102	442	0	416	0.9838	0.9827
2016/12/8 (木)	13	0	182	237	0	488	0.9931	0.9838
2016/12/7 (水)	30	0	3	233	0	310	0.9903	0.9932
2016/12/6 (火)	30	0	93	328	0	345	0.9934	0.9902
2016/12/5 (月)	161	0	36	358	0	283	0.9837	0.9934
2016/12/2 (金)	3	0	174	197	0	402	0.9894	0.9894

JPN Yen	取扱高			当日含む前5営業日計			参考レート	
	CALL	PUT	FUTURE	CALL	PUT	FUTURE	Open	Close
2016/12/15 (木)	4906	2876	308149	11244	10329	1205117	117.23	118.26
2016/12/14 (水)	2127	2021	331892	8027	12560	1083541	115.25	117.23
2016/12/13 (火)	1014	1084	172875	9291	13623	861196	114.85	115.25
2016/12/12 (月)	936	1590	222651	9695	14387	799211	115.46	114.85
2016/12/9 (金)	2261	2758	169550	10746	15255	756810	114.13	115.25
2016/12/8 (木)	1689	5107	186573	13566	16418	756277	113.64	114.13
2016/12/7 (水)	3391	3084	109547	15035	14835	746044	114.03	113.64
2016/12/6 (火)	1418	1848	110890	16077	21081	852676	113.81	114.03
2016/12/5 (月)	1987	2458	180250	18442	21902	916497	113.04	113.81
2016/12/2 (金)	5081	3921	169017	20364	21090	934992	114.18	113.56

CAN Dollar	取扱高			当日含む前5営業日計			参考レート	
	CALL	PUT	FUTURE	CALL	PUT	FUTURE	Open	Close
2016/12/15 (木)	2375	2331	157629	6042	5003	536162	0.7529	0.7501
2016/12/14 (水)	904	562	163126	5444	4387	449512	0.7613	0.7529
2016/12/13 (火)	273	217	88862	6736	5225	338927	0.7618	0.7613
2016/12/12 (月)	390	519	76019	6928	6207	300246	0.7611	0.7618
2016/12/9 (金)	2100	1374	50526	7696	7529	288936	0.7576	0.7587
2016/12/8 (木)	1777	1715	70979	6811	7755	304049	0.7560	0.7576
2016/12/7 (水)	2196	1400	52541	7978	8166	324092	0.7532	0.7560
2016/12/6 (火)	465	1199	50181	7283	8334	380557	0.7536	0.7531
2016/12/5 (月)	1158	1841	64709	8319	8749	405466	0.7498	0.7536
2016/12/2 (金)	1215	1600	65639	8055	7869	419637	0.7511	0.7527

NZL Dollar	取扱高			当日含む前5営業日計			参考レート	
	CALL	PUT	FUTURE	CALL	PUT	FUTURE	Open	Close
2016/12/15 (木)	0	0	98418	0	0	234486	0.7104	0.7043
2016/12/14 (水)	0	0	35771	0	0	209456	0.7200	0.7104
2016/12/13 (火)	0	0	25876	0	0	127475	0.7198	0.7200
2016/12/12 (月)	0	0	21899	0	0	109092	0.7120	0.7198
2016/12/9 (金)	0	0	27492	0	0	110406	0.7171	0.7139
2016/12/8 (木)	0	0	16437	0	0	112876	0.7177	0.7172
2016/12/7 (水)	0	0	17388	0	0	113374	0.7120	0.7177
2016/12/6 (火)	0	0	27190	0	0	126539	0.7140	0.7120
2016/12/5 (月)	0	0	24369	0	0	132908	0.7092	0.7140
2016/12/2 (金)	0	0	27990	0	0	124142	0.7088	0.7137

MEX Peso	取扱高			当日含む前5営業日計			参考レート	
	CALL	PUT	FUTURE	CALL	PUT	FUTURE	Open	Close
2016/12/15 (木)	124	41	137945	261	129	441030	4.8398	4.9157
2016/12/14 (水)	8	10	118825	137	88	345317	4.9358	4.8821
2016/12/13 (火)	73	45	68459	134	95	268562	4.9301	4.9310
2016/12/12 (月)	2	0	66182	62	146	238807	4.9341	4.9430
2016/12/9 (金)	54	33	49619	60	147	202164	4.9018	4.8967
2016/12/8 (木)	0	0	42232	8	119	197954	4.9286	4.9180
2016/12/7 (水)	5	17	42070	9	136	228467	4.9194	4.9157
2016/12/6 (火)	1	96	38704	5	252	230094	4.8780	4.9046
2016/12/5 (月)	0	1	29539	31	357	232946	4.8401	4.8554
2016/12/2 (金)	2	5	45409	36	693	240645	4.7962	4.8414

過去5日及び過去4週の4本値と各種ピボット

2016/12/12 ~ 2016/12/16

Table with columns: USD/JPY, Demark (当日のOHLCLから計算される翌日の), Pivot, Fibonacci Zone. Rows include daily data (2016/12/12 to 2016/12/16) and weekly data (2016/11/25 to 2016/12/16).

Table with columns: EUR/JPY, Demark (当日のOHLCLから計算される翌日の), Pivot, Fibonacci Zone. Rows include daily data (2016/12/12 to 2016/12/16) and weekly data (2016/11/25 to 2016/12/16).

Table with columns: EUR/USD, Demark (当日のOHLCLから計算される翌日の), Pivot, Fibonacci Zone. Rows include daily data (2016/12/12 to 2016/12/16) and weekly data (2016/11/25 to 2016/12/16).

Table with columns: GBP/JPY, Demark (当日のOHLCLから計算される翌日の), Pivot, Fibonacci Zone. Rows include daily data (2016/12/12 to 2016/12/16) and weekly data (2016/11/25 to 2016/12/16).

Table with columns: GBP/USD, Demark (当日のOHLCLから計算される翌日の), Pivot, Fibonacci Zone. Rows include daily data (2016/12/12 to 2016/12/16) and weekly data (2016/11/25 to 2016/12/16).

IMM扱い8通貨/ダウ/日経/金/オイル/主要クロス円の過去5日及び過去5週の4本値

AUDUSD					CADUSD					CHFUSD				
Date	Open	High	Low	Close	Date	Open	High	Low	Close	Date	Open	High	Low	Close
2016/12/16	0.7362	0.7370	0.7267	0.7298	2016/12/16	0.7501	0.7508	0.7467	0.7494	2016/12/16	0.9707	0.9763	0.9698	0.9736
2016/12/15	0.7398	0.7431	0.7338	0.7363	2016/12/15	0.7529	0.7533	0.7453	0.7501	2016/12/15	0.9800	0.9801	0.9668	0.9707
2016/12/14	0.7494	0.7525	0.7395	0.7398	2016/12/14	0.7613	0.7644	0.7522	0.7529	2016/12/14	0.9879	0.9917	0.9782	0.9797
2016/12/13	0.7498	0.7524	0.7476	0.7494	2016/12/13	0.7618	0.7632	0.7610	0.7613	2016/12/13	0.9870	0.9901	0.9856	0.9879
2016/12/12	0.7439	0.7504	0.7436	0.7498	2016/12/12	0.7611	0.7628	0.7603	0.7618	2016/12/12	0.9827	0.9877	0.9805	0.9870

CNYUSD					EURUSD					GBPUSD				
Date	Open	High	Low	Close	Date	Open	High	Low	Close	Date	Open	High	Low	Close
2016/12/16	0.1442	0.1443	0.1438	0.1439	2016/12/16	1.0421	1.0472	1.0401	1.0443	2016/12/16	1.2422	1.2509	1.2384	1.2481
2016/12/15	0.1441	0.1445	0.1439	0.1444	2016/12/15	1.0527	1.0527	1.0367	1.0421	2016/12/15	1.2540	1.2568	1.2377	1.2422
2016/12/14	0.1444	0.1448	0.1444	0.1448	2016/12/14	1.0626	1.0670	1.0498	1.0528	2016/12/14	1.2658	1.2720	1.2531	1.2540
2016/12/13	0.1444	0.1445	0.1443	0.1443	2016/12/13	1.0640	1.0667	1.0604	1.0626	2016/12/13	1.2681	1.2728	1.2654	1.2658
2016/12/12	0.1442	0.1444	0.1440	0.1441	2016/12/12	1.0547	1.0651	1.0526	1.0640	2016/12/12	1.2593	1.2700	1.2567	1.2681

JPYUSD					MXNUSD					NZDUSD				
Date	Open	High	Low	Close	Date	Open	High	Low	Close	Date	Open	High	Low	Close
2016/12/16	0.8458	0.8511	0.8444	0.8481	2016/12/16	0.0492	0.0492	0.0488	0.0489	2016/12/16	0.7042	0.7050	0.6932	0.6957
2016/12/15	0.8530	0.8539	0.8428	0.8456	2016/12/15	0.0484	0.0492	0.0483	0.0492	2016/12/15	0.7104	0.7120	0.7010	0.7043
2016/12/14	0.8677	0.8713	0.8519	0.8530	2016/12/14	0.0494	0.0495	0.0488	0.0488	2016/12/14	0.7200	0.7239	0.7103	0.7104
2016/12/13	0.8707	0.8712	0.8660	0.8677	2016/12/13	0.0493	0.0495	0.0493	0.0493	2016/12/13	0.7198	0.7232	0.7181	0.7200
2016/12/12	0.8661	0.8715	0.8611	0.8707	2016/12/12	0.0493	0.0496	0.0493	0.0494	2016/12/12	0.7120	0.7207	0.7116	0.7198

Nikkei 225 - Japonia (NIKKEI)					
Date	Open	High	Low	Close	(ドル建て終値)
2016/12/16	19438.39	19439.97	19360.36	19401.15	164.14
2016/12/15	19327.70	19436.90	19192.60	19273.79	163.85
2016/12/14	19270.01	19284.28	19184.75	19253.61	167.44
2016/12/13	19120.76	19253.51	19060.72	19250.52	167.03
2016/12/12	19183.82	19280.93	19054.00	19155.03	165.37
週4本値	19183.82	19439.97	19054.00	19401.15	164.14

XAUUSD					
Date	Open	High	Low	Close	
2016/12/16	1128.85	1141.29	1126.77	1133.60	0
2016/12/15	1141.64	1144.51	1123.04	1128.60	0
2016/12/14	1158.25	1165.09	1139.91	1142.92	0
2016/12/13	1162.73	1165.07	1154.75	1158.61	0
2016/12/12	1159.69	1165.77	1151.75	1162.24	0
週4本値	1159.69	1165.77	1123.04	1133.60	

Dow Jones Industrial - USA (DJIA)					
Date	Open	High	Low	Close	出来高
2016/12/16	19909.01	19923.17	19821.00	19843.41	542148758
2016/12/15	19811.50	19951.29	19811.50	19852.24	357349616
2016/12/14	19876.13	19966.43	19748.67	19792.53	408432850
2016/12/13	19852.21	19953.75	19846.45	19911.21	384865356
2016/12/12	19770.20	19824.59	19747.74	19796.43	333658392
週4本値	19770.20	19966.43	19747.74	19843.41	542148758

Historical Data by **Stooq**
 Historical Data by **MarketNewsline**
 Arrangement by **FX_勝てば官軍?**

Crude Light Oil						
Date	Open	High	Low	Close	Volume	
2016/12/16	51.17	52.05	50.52	52.03	0	
2016/12/15	50.80	51.44	49.97	51.06	0	
2016/12/14	52.44	52.74	50.69	50.77	1265265	
2016/12/13	52.51	53.41	52.38	52.48	1475791	
2016/12/12	53.33	54.48	52.23	52.39	2033624	
週4本値	53.33	54.48	49.97	52.03		

USDJPY					EURJPY					GBPJPY				
日付	始値	高値	安値	終値	日付	始値	高値	安値	終値	日付	始値	高値	安値	終値
2016/12/16	118.24	118.42	117.49	117.91	2016/12/16	123.21	123.62	122.84	123.13	2016/12/16	146.87	147.31	146.27	147.16
2016/12/15	117.23	118.66	117.11	118.26	2016/12/15	123.41	124.10	122.58	123.23	2016/12/15	147.01	148.46	146.36	146.90
2016/12/14	115.25	117.38	114.77	117.23	2016/12/14	122.46	123.49	122.14	123.43	2016/12/14	145.89	147.30	145.21	147.01
2016/12/13	114.85	115.48	114.78	115.25	2016/12/13	122.20	122.80	122.14	122.46	2016/12/13	145.64	146.71	145.54	145.88
2016/12/12	115.46	116.13	114.74	114.85	2016/12/12	121.77	122.93	121.59	122.20	2016/12/12	145.39	146.38	144.92	145.64

USDJPY Weekly					EURJPY Weekly					GBPJPY Weekly				
日付	始値	高値	安値	終値	日付	始値	高値	安値	終値	日付	始値	高値	安値	終値
2016/12/16	115.46	118.66	114.74	117.91	2016/12/16	121.77	124.10	121.59	123.13	2016/12/16	145.39	148.46	144.92	147.16
2016/12/09	113.04	115.37	113.01	115.25	2016/12/09	119.07	123.35	118.74	121.69	2016/12/09	142.81	146.04	142.79	144.93
2016/12/02	112.88	114.83	111.36	113.56	2016/12/02	119.64	121.89	118.55	121.12	2016/12/02	140.75	145.20	138.52	144.54
2016/11/25	110.91	113.90	110.28	113.09	2016/11/25	117.43	120.16	117.31	119.79	2016/11/25	136.98	141.75	136.30	140.93
2016/11/18	106.83	110.92	106.74	110.82	2016/11/18	115.78	117.48	115.55	117.41	2016/11/18	134.33	137.59	134.20	136.93

先週のIMM取り扱い対ドル8通貨チャート

※ 赤点線は週最高値/青点線は週最低値、BB中心線はSMA21

2016/12/12 ~ 2016/12/16

Chart by OANDA Japan MetaTrader4

