

**JAPANESE YEN - CHICAGO MERCANTILE EXCHANGE**  
**2016/07/05 ~ 2016/12/27**

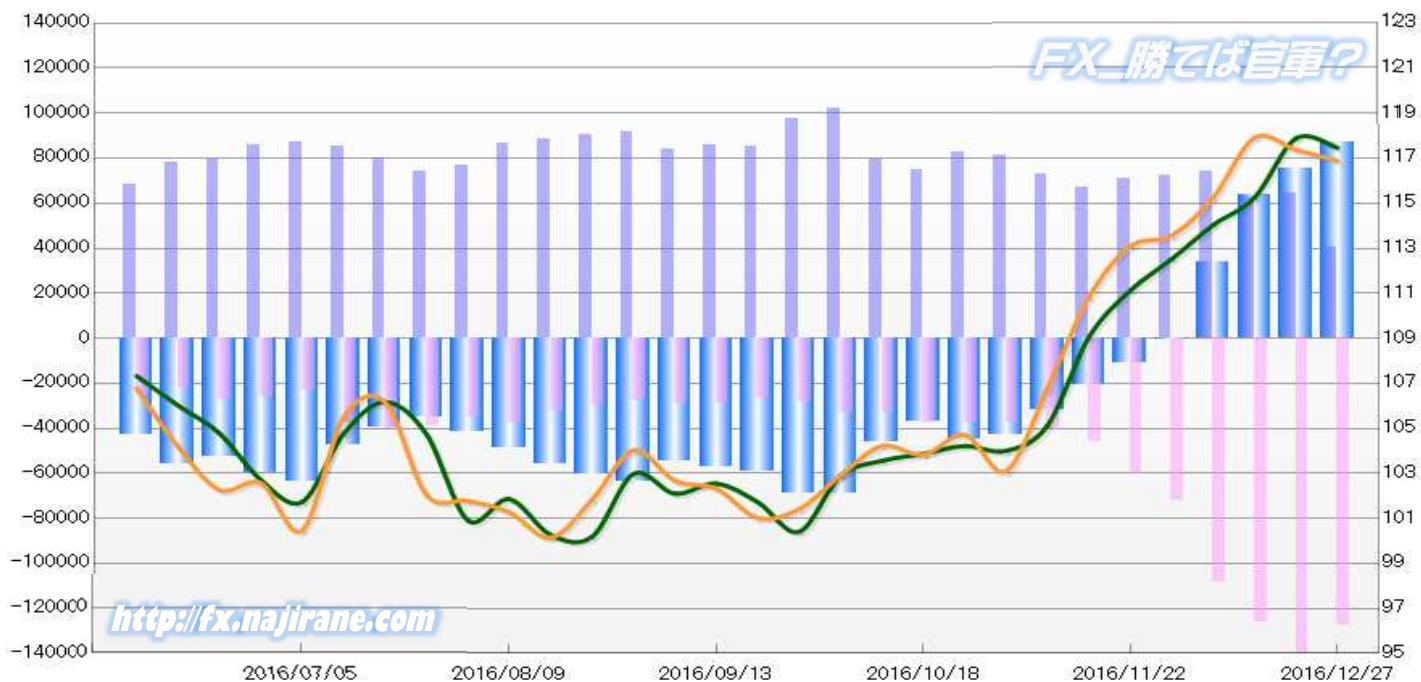
Code-097741

2016/12/30 NYクローズ時公表値

Report_Date	Non Commercial Positions												火曜日 引け値	金曜日 引け値
	Long	増減	増減(%)	Short	増減	増減(%)	売り越し	増減	増減(%)	売買計	増減	増減(%)		
2016/12/27	40565	-23635	-36.8%	127574	-12075	-8.6%	87009	11560	15.3%	168139	-35710	-17.5%	117.46	116.88
2016/12/20	64200	1768	2.8%	139649	13788	11.0%	75449	12020	19.0%	203849	15556	8.3%	117.88	117.38
2016/12/13	62432	-11935	-16.0%	125861	17557	16.2%	63429	29492	86.9%	188293	5622	3.1%	115.25	117.91
2016/12/06	74367	2243	3.1%	108304	35911	49.6%	33937	33668	12516.0%	182671	38154	26.4%	114.03	115.25
2016/11/29	72124	941	1.3%	72393	12110	20.1%	269	-11169	-102.5%	144517	13051	9.9%	112.52	113.56
2016/11/22	71183	4098	6.1%	60283	13874	29.9%	-10900	-9776	-47.3%	131466	17972	15.8%	111.12	113.09
2016/11/15	67085	-5534	-7.6%	46409	5746	14.1%	-20676	-11280	-35.3%	113494	212	0.2%	109.05	110.82
2016/11/08	72619	-8391	-10.4%	40663	2813	7.4%	-31956	-11204	-26.0%	113282	-5578	-4.7%	105.13	106.78
2016/11/01	81010	-1375	-1.7%	37850	60	0.2%	-43160	-1435	-3.2%	118860	-1315	-1.1%	104.00	103.11
2016/10/25	82385	7419	9.9%	37790	-185	-0.5%	-44595	7604	20.6%	120175	7234	6.4%	104.22	104.71
2016/10/18	74966	-4313	-5.4%	37975	4605	13.8%	-36991	-8918	-19.4%	112941	292	0.3%	103.87	103.83
2016/10/11	79279	-22707	-22.3%	33370	79	0.2%	-45909	-22786	-33.2%	112649	-22628	-16.7%	103.56	104.22
2016/10/04	101986	4554	4.7%	33291	4751	16.6%	-68695	-197	-0.3%	135277	9305	7.4%	102.90	102.91
2016/09/27	97432	12315	14.5%	28540	2208	8.4%	-68892	10107	17.2%	125972	14523	13.0%	100.41	101.41
2016/09/20	85117	-1023	-1.2%	26332	-2962	-10.1%	-58785	1939	3.4%	111449	-3985	-3.5%	101.73	101.03
2016/09/13	86140	2172	2.6%	29294	-185	-0.6%	-56846	2357	4.3%	115434	1987	1.8%	102.55	102.32
2016/09/06	83968	-7602	-8.3%	29479	1570	5.6%	-54489	-9172	-14.4%	113447	-6032	-5.0%	102.10	102.68
2016/08/30	91570	1183	1.3%	27909	-2162	-7.2%	-63661	3345	5.5%	119479	-979	-0.8%	102.98	104.03
2016/08/23	90387	2114	2.4%	30071	-2196	-6.8%	-60316	4310	7.7%	120458	-82	-0.1%	100.19	101.84
2016/08/16	88273	1554	1.8%	32267	-5621	-14.8%	-56006	7175	14.7%	120540	-4067	-3.3%	100.27	100.14
2016/08/09	86719	10144	13.2%	37888	3013	8.6%	-48831	7131	17.1%	124607	13157	11.8%	101.86	101.28
2016/08/02	76575	2501	3.4%	34875	-4241	-10.8%	-41700	6742	19.3%	111450	-1740	-1.5%	100.92	101.78
2016/07/26	74074	-5790	-7.2%	39116	-1395	-3.4%	-34958	-4395	-11.2%	113190	-7185	-6.0%	104.74	102.05
2016/07/19	79864	-5500	-6.4%	40511	2692	7.1%	-39353	-8192	-17.2%	120375	-2808	-2.3%	106.17	106.16
2016/07/12	85364	-1673	-1.9%	37819	14350	61.1%	-47545	-16023	-25.2%	123183	12677	11.5%	104.76	105.49
2016/07/05	87037			23469			-63568			110506			101.74	100.47

**JAPANESE YEN - CHICAGO MERCANTILE EXCHANGE**  
**FUTURES ONLY POSITIONS**

— 金曜終値 — 火曜終値 — Short枚数 — Long枚数 ■ 売り越し枚数(マイナスの場合は買越しと読替え)



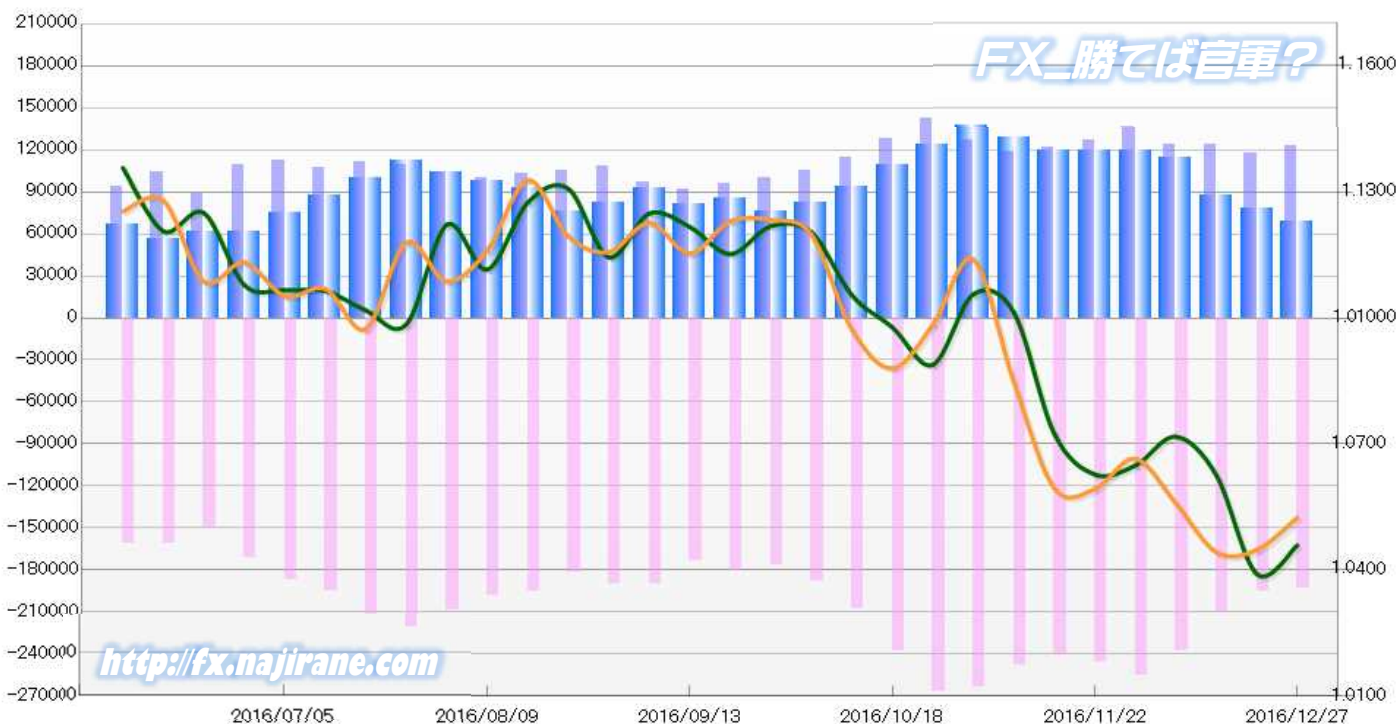
**EURO FX - CHICAGO MERCANTILE EXCHANGE**  
**2016/07/05 ~ 2016/12/27**

Code-099741  
**2016/12/30 NYクローズ時公表値**

Report_Date	Non Commercial Positions											火曜日 引け値	金曜日 引け値	
	Long	増減		Short	増減		売り越し	増減		売買計	増減			
2016/12/27	123281	5821	5.0%	192689	-2816	-1.4%	69408	-8637	-11.1%	315970	3005	1.0%	1.0459	1.0525
2016/12/20	117460	-6137	-5.0%	195505	-15605	-7.4%	78045	-9468	-10.8%	312965	-21742	-6.5%	1.0390	1.0448
2016/12/13	123597	207	0.2%	211110	-26836	-11.3%	87513	-27043	-23.6%	334707	-26629	-7.4%	1.0626	1.0443
2016/12/06	123390	-12718	-9.3%	237946	-17402	-6.8%	114556	-4684	-3.9%	361336	-30120	-7.7%	1.0718	1.0559
2016/11/29	136108	8986	7.1%	255348	8878	3.6%	119240	-108	-0.1%	391456	17864	4.8%	1.0649	1.0665
2016/11/22	127122	5547	4.6%	246470	5713	2.4%	119348	166	0.1%	373592	11260	3.1%	1.0628	1.0593
2016/11/15	121575	2678	2.3%	240757	-7454	-3.0%	119182	-10132	-7.8%	362332	-4776	-1.3%	1.0724	1.0595
2016/11/08	118897	-7546	-6.0%	248211	-15617	-5.9%	129314	-8071	-5.9%	367108	-23163	-5.9%	1.1013	1.0847
2016/11/01	126443	-16438	-11.5%	263828	-2909	-1.1%	137385	13529	10.9%	390271	-19347	-4.7%	1.1056	1.1139
2016/10/25	142881	14700	11.5%	266737	29288	12.3%	123856	14588	13.4%	409618	43988	12.0%	1.0889	1.0984
2016/10/18	128181	13897	12.2%	237449	29693	14.3%	109268	15796	16.9%	365630	43590	13.5%	1.0978	1.0880
2016/10/11	114284	8650	8.2%	207756	20063	10.7%	93472	11413	13.9%	322040	28713	9.8%	1.1054	1.0972
2016/10/04	105634	5142	5.1%	187693	11171	6.3%	82059	6029	7.9%	293327	16313	5.9%	1.1204	1.1199
2016/09/27	100492	4794	5.0%	176522	-4201	-2.3%	76030	-8995	-10.6%	277014	593	0.2%	1.1219	1.1233
2016/09/20	95698	3915	4.3%	180723	7465	4.3%	85025	3550	4.4%	276421	11380	4.3%	1.1152	1.1230
2016/09/13	91783	-5541	-5.7%	173258	-16696	-8.8%	81475	-11155	-12.0%	265041	-22237	-7.7%	1.1217	1.1154
2016/09/06	97324	-10937	-10.1%	189954	-232	-0.1%	92630	10705	13.1%	287278	-11169	-3.7%	1.1249	1.1226
2016/08/30	108261	2887	2.7%	190186	8154	4.5%	81925	5267	6.9%	298447	11041	3.8%	1.1144	1.1157
2016/08/23	105374	2314	2.2%	182032	-13536	-6.9%	76658	-15850	-17.1%	287406	-11222	-3.8%	1.1308	1.1195
2016/08/16	103060	2618	2.6%	195568	-3273	-1.6%	92508	-5891	-6.0%	298628	-655	-0.2%	1.1275	1.1328
2016/08/09	100442	-4074	-3.9%	198841	-9778	-4.7%	98399	-5704	-5.5%	299283	-13852	-4.4%	1.1115	1.1161
2016/08/02	104516	-4677	-4.3%	208619	-13174	-5.9%	104103	-8497	-7.5%	313135	-17851	-5.4%	1.1222	1.1087
2016/07/26	109193	-2385	-2.1%	221793	10324	4.9%	112600	12709	12.7%	330986	7939	2.5%	1.0985	1.1179
2016/07/19	111578	3943	3.7%	211469	16174	8.3%	99891	12231	14.0%	323047	20117	6.6%	1.1018	1.0974
2016/07/12	107635	-4376	-3.9%	195295	7957	4.2%	87660	12333	16.4%	302930	3581	1.2%	1.1065	1.1069
2016/07/05	112011			187338			75327			299349			1.1066	1.1052

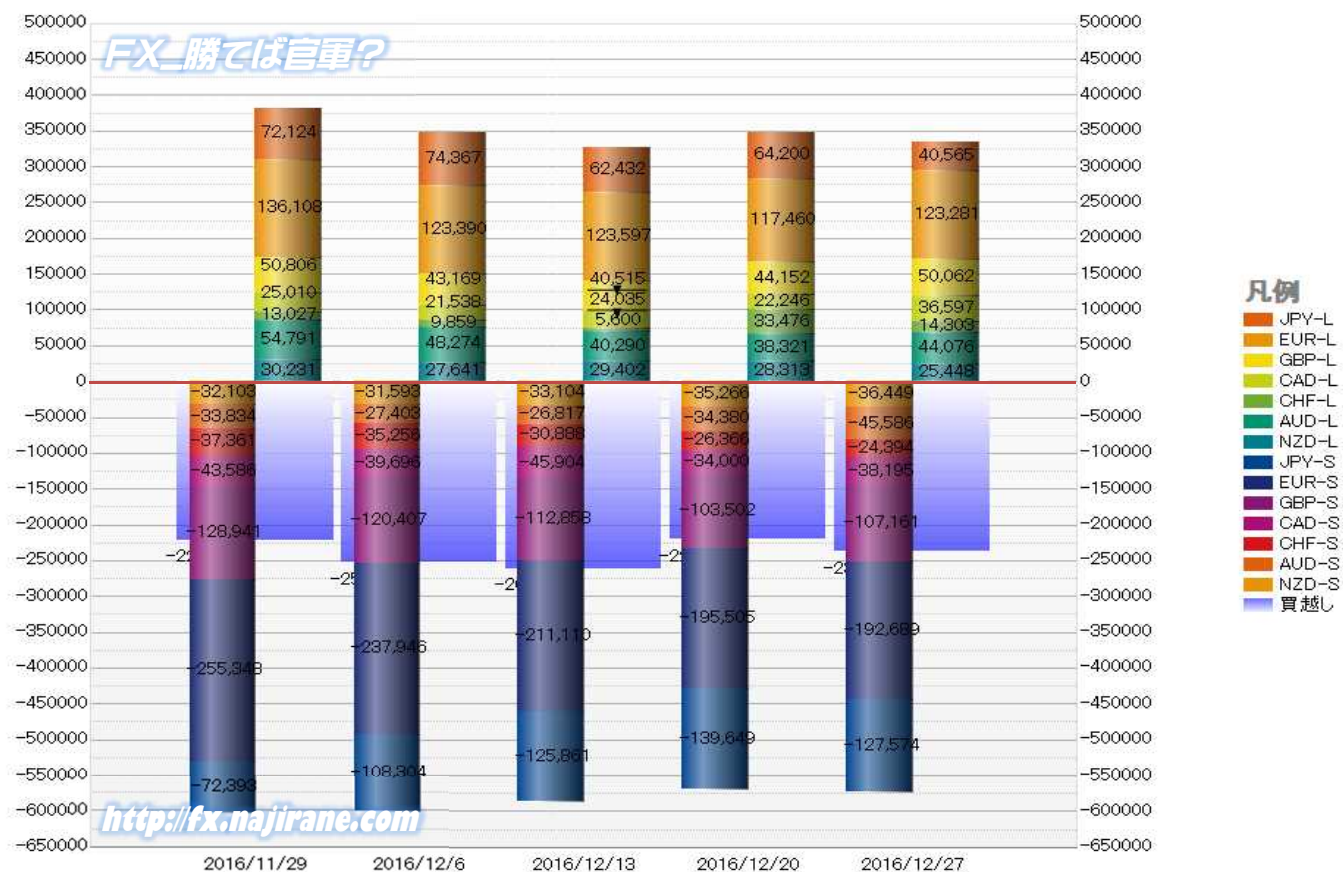
**EURO FX - CHICAGO MERCANTILE EXCHANGE**  
**FUTURES ONLY POSITIONS**

— 金曜締め週終値 — 火曜締め週終値 — Short枚数 — Long枚数 — 売り越し枚数(マイナスの場合は買越しと読替え)



	2016/11/29			2016/12/06			2016/12/13			2016/12/20			2016/12/27		
	Long	Short	売り越し	Long	Short	売り越し	Long	Short	売り越し	Long	Short	売り越し	Long	Short	売り越し
JPY	72124	72393	269	74367	108304	33937	62432	125861	63429	64200	139649	75449	40565	127574	87009
	前週比 枚数増減 (枚)			2243	35911	33668	-11935	17557	29492	1768	13788	12020	-23635	-12075	11560
	前週比 枚数増減 (%)			3.11%	49.61%	12515.99%	-16.05%	16.21%	86.90%	2.83%	10.95%	18.95%	-36.81%	-8.65%	15.32%
EUR	136108	255348	119240	123390	237946	114556	123597	211110	87513	117460	195505	78045	123281	192689	69408
	前週比 枚数増減 (枚)			-12718	-17402	-4684	207	-26836	-27043	-6137	-15605	-9468	5821	-2816	-8637
	前週比 枚数増減 (%)			-9.34%	-6.82%	-3.93%	0.17%	-11.28%	-23.61%	-4.97%	-7.39%	-10.82%	4.96%	-1.44%	-11.07%
GBP	50806	128941	78135	43169	120407	77238	40515	112858	72343	44152	103502	59350	50062	107161	57099
	前週比 枚数増減 (枚)			-7637	-8534	-897	-2654	-7549	-4895	3637	-9356	-12993	5910	3659	-2251
	前週比 枚数増減 (%)			-15.03%	-6.62%	-1.15%	-6.15%	-6.27%	-6.34%	8.98%	-8.29%	-17.96%	13.39%	3.54%	-3.79%
AUD	54791	33834	-20957	48274	27403	-20871	40290	26817	-13473	38321	34380	-3941	44076	45586	1510
	前週比 枚数増減 (枚)			-6517	-6431	-86	-7984	-586	-7398	-1969	7563	-9532	5755	11206	-2431
	前週比 枚数増減 (%)			-11.89%	-19.01%	-0.41%	-16.54%	-2.14%	-35.45%	-4.89%	28.20%	-70.75%	15.02%	32.59%	-138.32%
CAD	25010	43586	18576	21538	39696	18158	24035	45904	21869	22246	34000	11754	36597	38195	1598
	前週比 枚数増減 (枚)			-3472	-3890	-418	2497	6208	3711	-1789	-11904	-10115	14351	4195	-10156
	前週比 枚数増減 (%)			-13.88%	-8.92%	-2.25%	11.59%	15.64%	20.44%	-7.44%	-25.93%	-46.25%	64.51%	12.34%	-86.40%
CHF	13027	37361	24334	9859	35256	25397	5600	30888	25288	33476	26366	-7110	14303	24394	10091
	前週比 枚数増減 (枚)			-3168	-2105	1063	-4259	-4368	-109	27876	-4522	-18178	-19173	-1972	2981
	前週比 枚数増減 (%)			-24.32%	-5.63%	4.37%	-43.20%	-12.39%	-0.43%	497.79%	-14.64%	-128.12%	-57.27%	-7.48%	-241.93%
NZD	30231	32103	1872	27641	31593	3952	29402	33104	3702	28313	35266	6953	25448	36449	11001
	前週比 枚数増減 (枚)			-2590	-510	2080	1761	1511	-250	-1089	2162	3251	-2865	1183	4048
	前週比 枚数増減 (%)			-8.57%	-1.59%	111.11%	6.37%	4.78%	-6.33%	-3.70%	6.53%	87.82%	-10.12%	3.35%	58.22%
MXN	19314	73814	54500	18619	72685	54066	19001	76660	57659	20806	87487	66681	21411	83068	61657
	前週比 枚数増減 (枚)			-695	-1129	-434	382	3975	3593	1805	10827	9022	605	-4419	-5024
	前週比 枚数増減 (%)			-3.60%	-1.53%	-0.80%	2.05%	5.47%	6.65%	9.50%	14.12%	15.65%	2.91%	-5.05%	-7.53%
Total All 8	401411	677380	275969	366857	673290	306433	344872	663202	318330	368974	656155	287181	355743	655116	299373
	前週比 枚数増減 (枚)			-34554	-4090	30464	-21985	-10088	11897	24102	-7047	-31149	-13231	-1039	12192
	前週比 枚数増減 (%)			-8.61%	-0.60%	11.04%	-5.99%	-1.50%	3.88%	6.99%	-1.06%	-9.79%	-3.59%	-0.16%	4.25%
Total 7 (MXN除)	382097	603566	221469	348238	600605	252367	325871	586542	260671	348168	568668	220500	334332	572048	237716
	前週比 枚数増減 (枚)			-33859	-2961	30898	-22367	-14063	8304	22297	-17874	-40171	-13836	3380	17216
	前週比 枚数増減 (%)			-8.9%	-0.5%	14.0%	-6.4%	-2.3%	3.3%	6.8%	-3.0%	-15.4%	-4.0%	0.6%	7.8%

### 直近5週 CFTC IMM主要7通貨の構成



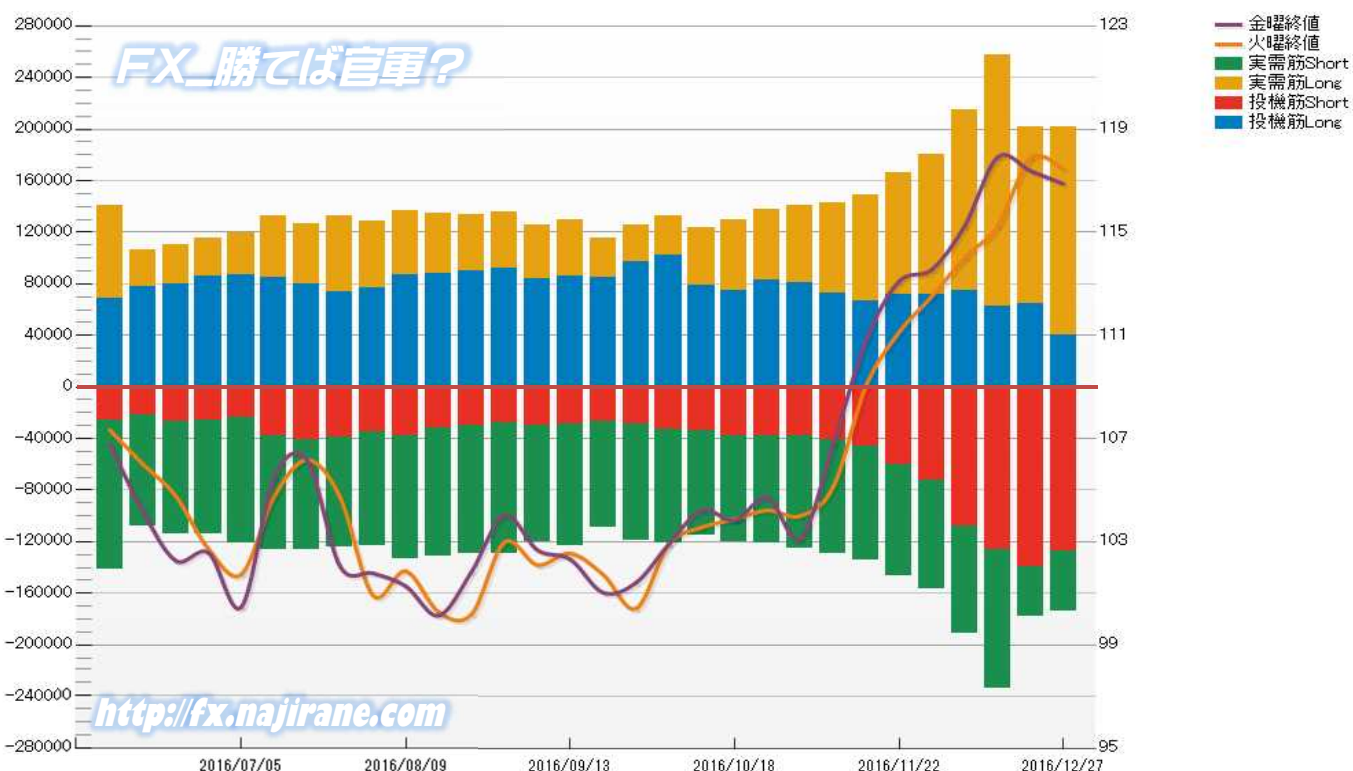


JAPANESE YEN - CHICAGO MERCANTILE EXCHANGE  
FUTURES ONLY POSITIONS

Code-097741  
2016/12/30 公表値

Date	投機筋集計				実需筋集計				投機筋+実需筋合計				ドル円終値	
	円買い	円売り	売り越し	売買計	円買い	円売り	売り越し	売買計	円買い	円売り	売り越し	売買計	火曜締め	金曜締め
2016/12/27	40565	127574	87009	168139	160533	46704	-113829	207237	201098	174278	-26820	375376	117.46	116.88
2016/12/20	64200	139649	75449	203849	137201	37978	-99223	175179	201401	177627	-23774	379028	117.88	117.38
2016/12/13	62432	125861	63429	188293	194893	107464	-87429	302357	257325	233325	-24000	490650	115.25	117.91
2016/12/06	74367	108304	33937	182671	140357	83264	-57093	223621	214724	191568	-23156	406292	114.03	115.25
2016/11/29	72124	72393	269	144517	108163	83995	-24168	192158	180287	156388	-23899	336675	112.52	113.56
2016/11/22	71183	60283	-10900	131466	95166	86202	-8964	181368	166349	146485	-19864	312834	111.12	113.09
2016/11/15	67085	46409	-20676	113494	81503	88408	6905	169911	148588	134817	-13771	283405	109.05	110.82
2016/11/08	72619	40663	-31956	113282	69838	88139	18301	157977	142457	128802	-13655	271259	105.13	106.78
2016/11/01	81010	37850	-43160	118860	59272	87511	28239	146783	140282	125361	-14921	265643	104.00	103.11
2016/10/25	82385	37790	-44595	120175	55555	83712	28157	139267	137940	121502	-16438	259442	104.22	104.71
2016/10/18	74966	37975	-36991	112941	54359	81884	27525	136243	129325	119859	-9466	249184	103.87	103.83
2016/10/11	79279	33370	-45909	112649	43806	81544	37738	125350	123085	114914	-8171	237999	103.56	104.22
2016/10/04	101986	33291	-68695	135277	30627	87820	57193	118447	132613	121111	-11502	253724	102.90	102.91
2016/09/27	97432	28540	-68892	125972	28326	90589	62263	118915	125758	119129	-6629	244887	100.41	101.41
2016/09/20	85117	26332	-58785	111449	29715	83021	53306	112736	114832	109353	-5479	224185	101.73	101.03
2016/09/13	86140	29294	-56846	115434	43492	93700	50208	137192	129632	122994	-6638	252626	102.55	102.32
2016/09/06	83968	29479	-54489	113447	41120	91024	49904	132144	125088	120503	-4585	245591	102.10	102.68
2016/08/30	91570	27909	-63661	119479	44366	101570	57204	145936	135936	129479	-6457	265415	102.98	104.03
2016/08/23	90387	30071	-60316	120458	43245	99482	56237	142727	133632	129553	-4079	263185	100.19	101.84
2016/08/16	88273	32267	-56006	120540	46280	99196	52916	145476	134553	131463	-3090	266016	100.27	100.14
2016/08/09	86719	37888	-48831	124607	49619	95343	45724	144962	136338	133231	-3107	269569	101.86	101.28
2016/08/02	76575	34875	-41700	111450	51707	88074	36367	139781	128282	122949	-5333	251231	100.92	101.78
2016/07/26	74074	39116	-34958	113190	58947	85458	26511	144405	133021	124574	-8447	257595	104.74	102.05
2016/07/19	79864	40511	-39353	120375	46993	85719	38726	132712	126857	126230	-627	253087	106.17	106.16
2016/07/12	85364	37819	-47545	123183	46842	88850	42008	135692	132206	126669	-5537	258875	104.76	105.49
2016/07/05	87037	23469	-63568	110506	32637	97652	65015	130289	119674	121121	1447	240795	101.74	100.47
2016/06/28	85493	25743	-59750	111236	30249	88316	58067	118565	115742	114059	-1683	229801	102.71	102.57
2016/06/21	79398	27102	-52296	106500	30450	86992	56542	117442	109848	114094	4246	223942	104.78	102.27
2016/06/14	77703	22013	-55690	99716	28678	86062	57384	114740	106381	108075	1694	214456	106.02	104.19
2016/06/07	68237	25384	-42853	93621	72616	116477	43861	189093	140853	141861	1008	282714	107.33	106.78

JAPANESE YEN - CHICAGO MERCANTILE EXCHANGE  
FUTURES ONLY POSITIONS Code-097741

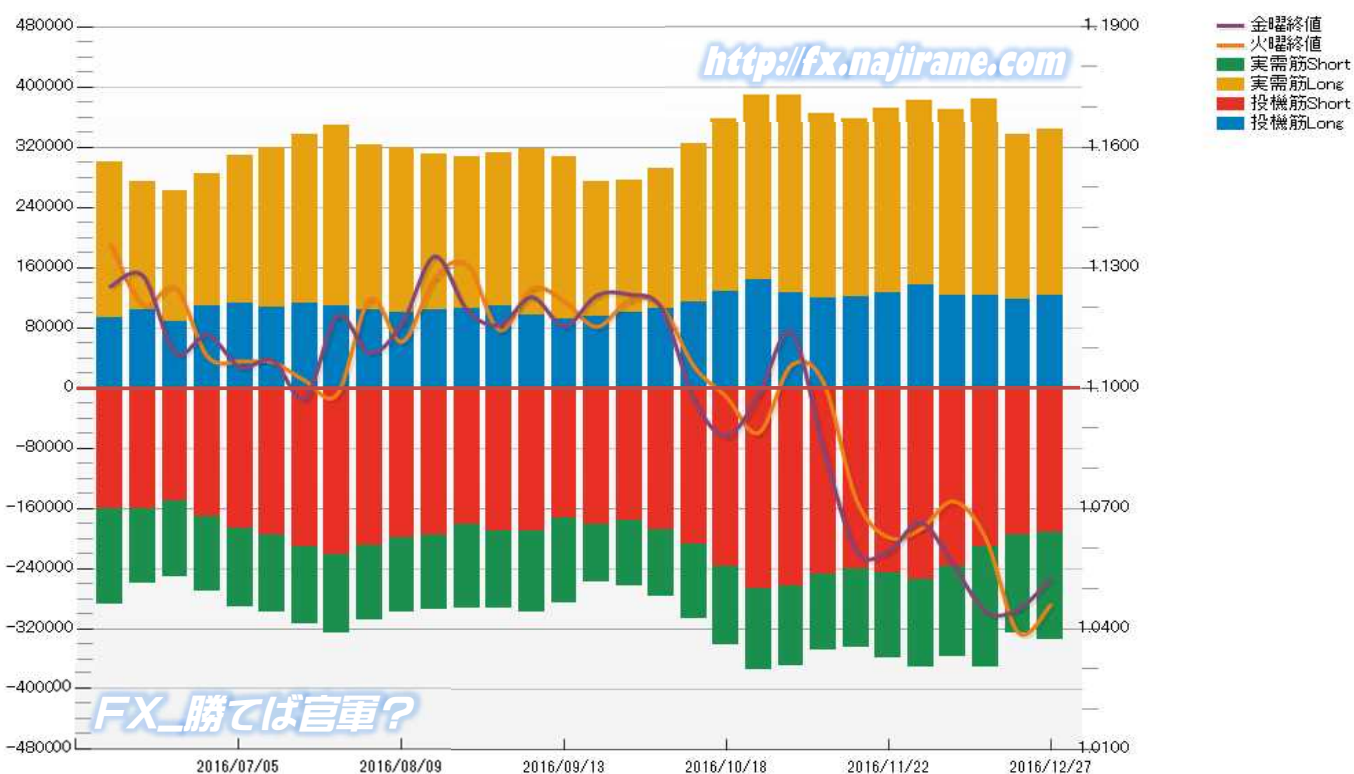


**EURO FX - CHICAGO MERCANTILE EXCHANGE  
FUTURES ONLY POSITIONS**

**Code-099741  
2016/12/30 公表値**

Date	投机筋集計				実需筋集計				投机筋+実需筋合計				ユーロドル終値	
	EUR買い	EUR売り	売り越し	売買計	EUR買い	EUR売り	売り越し	売買計	EUR買い	EUR売り	売り越し	売買計	火曜締め	金曜締め
2016/12/27	123281	192689	69408	315970	220288	141332	-78956	361620	343569	334021	-9548	677590	1.0459	1.0525
2016/12/20	117460	195505	78045	312965	219648	130749	-88899	350397	337108	326254	-10854	663362	1.0390	1.0448
2016/12/13	123597	211110	87513	334707	259537	160236	-99301	419773	383134	371346	-11788	754480	1.0626	1.0443
2016/12/06	123390	237946	114556	361336	246681	120065	-126616	366746	370071	358011	-12060	728082	1.0718	1.0559
2016/11/29	136108	255348	119240	391456	245355	116561	-128794	361916	381463	371909	-9554	753372	1.0649	1.0665
2016/11/22	127122	246470	119348	373592	243796	111726	-132070	355522	370918	358196	-12722	729114	1.0628	1.0593
2016/11/15	121575	240757	119182	362332	235596	104624	-130972	340220	357171	345381	-11790	702552	1.0724	1.0595
2016/11/08	118897	248211	129314	367108	245616	101035	-144581	346651	364513	349246	-15267	713759	1.1013	1.0847
2016/11/01	126443	263828	137385	390271	261922	105533	-156389	367455	388365	369361	-19004	757726	1.1056	1.1139
2016/10/25	142881	266737	123856	409618	246230	108147	-138083	354377	389111	374884	-14227	763995	1.0889	1.0984
2016/10/18	128181	237449	109268	365630	230197	104790	-125407	334987	358378	342239	-16139	700617	1.0978	1.0880
2016/10/11	114284	207756	93472	322040	209879	99131	-110748	309010	324163	306887	-17276	631050	1.1054	1.0972
2016/10/04	105634	187693	82059	293327	186827	89483	-97344	276310	292461	277176	-15285	569637	1.1204	1.1199
2016/09/27	100492	176522	76030	277014	174828	86986	-87842	261814	275320	263508	-11812	538828	1.1219	1.1233
2016/09/20	95698	180723	85025	276421	177910	77967	-99943	255877	273608	258690	-14918	532298	1.1152	1.1230
2016/09/13	91783	173258	81475	265041	216048	112825	-103223	328873	307831	286083	-21748	593914	1.1217	1.1154
2016/09/06	97324	189954	92630	287278	220781	107441	-113340	328222	318105	297395	-20710	615500	1.1249	1.1226
2016/08/30	108261	190186	81925	298447	204241	103433	-100808	307674	312502	293619	-18883	606121	1.1144	1.1157
2016/08/23	105374	182032	76658	287406	202180	111006	-91174	313186	307554	293038	-14516	600592	1.1308	1.1195
2016/08/16	103060	195568	92508	298628	208203	99798	-108405	308001	311263	295366	-15897	606629	1.1275	1.1328
2016/08/09	100442	198841	98399	299283	218984	99470	-119514	318454	319426	298311	-21115	617737	1.1115	1.1161
2016/08/02	104516	208619	104103	313135	218778	99452	-119326	318230	323294	308071	-15223	631365	1.1222	1.1087
2016/07/26	109193	221793	112600	330986	239073	103338	-135735	342411	348266	325131	-23135	673397	1.0985	1.1179
2016/07/19	111578	211469	99891	323047	225909	101654	-124255	327563	337487	313123	-24364	650610	1.1018	1.0974
2016/07/12	107635	195295	87660	302930	211520	103371	-108149	314891	319155	298666	-20489	617821	1.1065	1.1069
2016/07/05	112011	187338	75327	299349	197845	104095	-93750	301940	309856	291433	-18423	601289	1.1066	1.1052
2016/06/28	109580	171514	61934	281094	175747	99094	-76653	274841	285327	270608	-14719	555935	1.1078	1.1132
2016/06/21	88639	149985	61346	238624	174231	100833	-73398	275064	262870	250818	-12052	513688	1.1250	1.1087
2016/06/14	104510	160999	56489	265509	168953	98248	-70705	267201	273463	259247	-14216	532710	1.1207	1.1280
2016/06/07	93492	160604	67112	254096	207448	127910	-79538	335358	300940	288514	-12426	589454	1.1357	1.1253

**EURO FX - CHICAGO MERCANTILE EXCHANGE  
FUTURES ONLY POSITIONS Code-099741**



FX\_勝てば官軍?

# CME Daily Volume

シカゴ・マーカントイル取引所 取扱高日次データ

FX\_勝てば官軍?

<http://fx.najirane.com>

EU Euro		取扱高			当日含む前5営業日計			参考レート	
Date	CALL	PUT	FUTURE	CALL	PUT	FUTURE	Open	Close	
2016/12/29 (木)	0	0	2461	3628	3346	142577	1.0419	1.0493	
2016/12/28 (水)	0	0	33	8334	9058	259780	1.0459	1.0419	
2016/12/27 (火)	0	0	0	12059	16179	408127	1.0455	1.0459	
2016/12/23 (金)	0	0	2	17519	19685	566318	1.0436	1.0448	
2016/12/22 (木)	3628	3346	140081	22779	23662	842634	1.0428	1.0436	
2016/12/21 (水)	4706	5712	119664	28032	38182	1285330	1.0391	1.0429	
2016/12/20 (火)	3725	7121	148380	29310	38597	1679260	1.0401	1.0390	
2016/12/19 (月)	5460	3506	158191	28285	35339	1849998	1.0447	1.0402	
2016/12/16 (金)	5260	3977	276318	30851	36812	2049121	1.0421	1.0443	
2016/12/15 (木)	8881	17866	582777	38241	45408	2047259	1.0527	1.0421	

AUS Dollar		取扱高			当日含む前5営業日計			参考レート	
Date	CALL	PUT	FUTURE	CALL	PUT	FUTURE	Open	Close	
2016/12/29 (木)	0	0	0	1594	1414	66012	0.7182	0.7217	
2016/12/28 (水)	0	0	102	2361	1947	119820	0.7185	0.7182	
2016/12/27 (火)	0	0	0	3939	2292	184106	0.7185	0.7185	
2016/12/23 (金)	0	0	177	5342	3425	257710	0.7214	0.7173	
2016/12/22 (木)	1594	1414	65733	6967	4376	367603	0.7229	0.7214	
2016/12/21 (水)	767	533	53808	6572	5657	470070	0.7264	0.7229	
2016/12/20 (火)	1578	345	64388	6483	5884	580909	0.7248	0.7265	
2016/12/19 (月)	1403	1133	73604	5309	5760	609973	0.7280	0.7249	
2016/12/16 (金)	1625	951	110070	4060	4755	613744	0.7362	0.7298	
2016/12/15 (木)	1199	2695	168200	3001	4329	588204	0.7398	0.7363	

CHE Franc		取扱高			当日含む前5営業日計			参考レート	
Date	CALL	PUT	FUTURE	CALL	PUT	FUTURE	Open	Close	
2016/12/29 (木)	0	0	0	2	0	0	0.9726	0.9778	
2016/12/28 (水)	0	0	0	35	0	15	0.9728	0.9725	
2016/12/27 (火)	0	0	0	45	0	66	0.9735	0.9729	
2016/12/23 (金)	0	0	0	232	0	96	0.9748	0.9729	
2016/12/22 (木)	2	0	0	295	0	96	0.9742	0.9748	
2016/12/21 (水)	33	0	15	490	0	102	0.9722	0.9742	
2016/12/20 (火)	10	0	51	599	0	358	0.9734	0.9721	
2016/12/19 (月)	187	0	30	677	0	307	0.9736	0.9734	
2016/12/16 (金)	63	0	0	625	0	336	0.9707	0.9736	
2016/12/15 (木)	197	0	6	770	0	438	0.9800	0.9707	

JPN Yen		取扱高			当日含む前5営業日計			参考レート	
Date	CALL	PUT	FUTURE	CALL	PUT	FUTURE	Open	Close	
2016/12/29 (木)	0	0	0	1123	304	68954	117.06	116.56	
2016/12/28 (水)	0	0	0	1746	975	159331	117.45	117.06	
2016/12/27 (火)	0	0	0	3217	2943	281998	117.12	117.46	
2016/12/23 (金)	0	0	0	4449	3844	416226	117.57	117.38	
2016/12/22 (木)	1123	304	68954	7763	5148	595442	117.48	117.55	
2016/12/21 (水)	623	671	90377	11546	7720	834637	117.89	117.48	
2016/12/20 (火)	1471	1968	122667	13050	9070	1076152	117.11	117.88	
2016/12/19 (月)	1232	901	134228	12593	8186	1126360	117.88	117.09	
2016/12/16 (金)	3314	1304	179216	12297	8875	1214783	118.24	117.91	
2016/12/15 (木)	4906	2876	308149	11244	10329	1205117	117.23	118.26	

CAN Dollar		取扱高			当日含む前5営業日計			参考レート	
Date	CALL	PUT	FUTURE	CALL	PUT	FUTURE	Open	Close	
2016/12/29 (木)	0	0	52	1219	1427	56582	0.7379	0.7405	
2016/12/28 (水)	0	0	2055	1636	1866	98218	0.7365	0.7379	
2016/12/27 (火)	0	0	0	1998	1989	139754	0.7400	0.7365	
2016/12/23 (金)	0	0	0	2452	2266	185335	0.7415	0.7387	
2016/12/22 (木)	1219	1427	54475	3092	2532	271585	0.7440	0.7415	
2016/12/21 (水)	417	439	41688	4248	3436	374739	0.7481	0.7440	
2016/12/20 (火)	362	123	43591	4735	3559	496177	0.7458	0.7482	
2016/12/19 (月)	454	277	45581	4646	3653	541448	0.7500	0.7459	
2016/12/16 (金)	640	266	86250	4582	3895	571886	0.7501	0.7494	
2016/12/15 (木)	2375	2331	157629	6042	5003	536162	0.7529	0.7501	

NZL Dollar		取扱高			当日含む前5営業日計			参考レート	
Date	CALL	PUT	FUTURE	CALL	PUT	FUTURE	Open	Close	
2016/12/29 (木)	0	0	0	0	0	17196	0.6927	0.6960	
2016/12/28 (水)	0	0	0	0	0	34310	0.6893	0.6927	
2016/12/27 (火)	0	0	163	0	0	53671	0.6899	0.6894	
2016/12/23 (金)	0	0	17033	0	0	73939	0.6903	0.6877	
2016/12/22 (木)	0	0	17114	0	0	102960	0.6906	0.6903	
2016/12/21 (水)	0	0	19361	0	0	138449	0.6927	0.6906	
2016/12/20 (火)	0	0	20268	0	0	219753	0.6930	0.6927	
2016/12/19 (月)	0	0	29184	0	0	236163	0.6965	0.6928	
2016/12/16 (金)	0	0	52522	0	0	241771	0.7042	0.6957	
2016/12/15 (木)	0	0	98418	0	0	234486	0.7104	0.7043	

MEX Peso		取扱高			当日含む前5営業日計			参考レート	
Date	CALL	PUT	FUTURE	CALL	PUT	FUTURE	Open	Close	
2016/12/29 (木)	0	0	0	17	201	40805	4.8261	4.8261	
2016/12/28 (水)	0	0	0	63	203	63872	4.8112	4.8169	
2016/12/27 (火)	0	0	509	147	203	87427	4.8379	4.8152	
2016/12/23 (金)	0	0	2	147	203	129511	4.8166	4.8455	
2016/12/22 (木)	17	201	40294	151	203	202439	4.8414	4.8174	
2016/12/21 (水)	46	2	23067	258	43	300090	4.8755	4.8582	
2016/12/20 (火)	84	0	23555	220	51	395848	4.8877	4.8879	
2016/12/19 (月)	0	0	42593	209	96	440752	4.8869	4.9076	
2016/12/16 (金)	4	0	72930	211	96	464341	4.9150	4.8917	
2016/12/15 (木)	124	41	137945	261	129	441030	4.8398	4.9157	

# 過去5日及び過去4週の4本値と各種ピボット

2016/12/23 ~ 2016/12/30

USD/JPY						Demark								Pivot					Fibonacci Zone										
当日のOHLCLから計算される翌日の						TD Range Projection				TD pivot points				StopLoss					3-days AVG										
日足	Open	High	Low	Close	値幅/日	引け形態	真の高値	真の安値	予想高値	予想安値	予想高値	予想安値	LBOP	S2	S1	PP	R1	R2	HBOP	3-days AVG	Support Zone 2	Support Zone 1	BP	Resistance Zone 1	Resistance Zone 2				
2016/12/23	117.57	117.61	117.18	117.38	43p	陽線引け	-	-	-	-	-	-	116.74	116.96	117.17	117.39	117.60	117.82	118.04					116.79 ~ 116.96	117.12 ~ 117.17	117.39	117.61 ~ 117.66	117.82 ~ 117.99	
2016/12/27	117.12	117.62	117.11	117.46	50p	陽線引け	117.62	117.11	117.79	117.29	117.79	117.29	116.67	116.89	117.18	117.40	117.68	117.90	118.18					116.70 ~ 116.89	117.08 ~ 117.14	117.40	117.65 ~ 117.71	117.90 ~ 118.09	
2016/12/28	117.45	117.81	116.85	117.06	97p	陽線引け	117.81	116.85	117.44	116.47	117.44	116.47	115.70	116.28	116.67	117.24	117.63	118.21	118.60	117.34	Bear				115.91 ~ 116.28	116.64 ~ 116.76	117.24	117.72 ~ 117.84	118.21 ~ 118.58
2016/12/29	117.06	117.16	116.24	116.56	92p	陽線引け	117.16	116.24	116.86	115.94	116.86	115.94	115.22	115.73	116.14	116.65	117.06	117.57	117.98	117.10	Bear				115.38 ~ 115.73	116.08 ~ 116.19	116.65	117.11 ~ 117.22	117.57 ~ 117.92
2016/12/30	116.56	117.20	116.05	116.88	115p	陽線引け	117.20	116.05	117.61	116.46	117.61	116.46	115.07	115.56	116.22	116.71	117.36	117.85	118.51	116.87	Bear				115.12 ~ 115.56	116.00 ~ 116.13	116.71	117.28 ~ 117.42	117.85 ~ 118.29
週足	Open	High	Low	Close	値幅/週	引け形態	真の高値	真の安値	予想高値	予想安値	予想高値	予想安値	LBOP	S2	S1	PP	R1	R2	HBOP	3-days AVG	Support Zone 2	Support Zone 1	BP	Resistance Zone 1	Resistance Zone 2				
2016/12/05 ~ 2016/12/09	113.04	115.37	113.01	115.25	236p	陽線引け	-	-	-	-	-	-	111.35	112.18	113.71	114.54	116.08	116.90	118.44					111.28 ~ 112.18	113.08 ~ 113.36	114.54	115.72 ~ 116.00	116.90 ~ 117.81	
2016/12/12 ~ 2016/12/16	115.46	118.66	114.74	117.91	391p	陽線引け	118.66	113.01	121.11	115.46	120.24	116.33	111.64	113.19	115.55	117.10	119.46	121.02	123.37					111.69 ~ 113.19	114.68 ~ 115.15	117.10	119.06 ~ 119.52	121.02 ~ 122.51	
2016/12/19 ~ 2016/12/23	117.88	118.24	116.55	117.38	169p	陽線引け	118.24	116.55	117.81	116.12	117.81	116.12	114.85	115.70	116.54	117.39	118.23	119.09	119.93	116.35	Bull				115.05 ~ 115.70	116.35 ~ 116.55	117.39	118.24 ~ 118.44	119.09 ~ 119.73
2016/12/26 ~ 2016/12/30	117.12	117.81	116.05	116.88	176p	陽線引け	117.81	116.05	117.34	115.58	117.34	115.58	114.25	115.15	116.01	116.91	117.78	118.68	119.54	117.14	Bear				114.48 ~ 115.15	115.82 ~ 116.03	116.91	117.79 ~ 118.00	118.68 ~ 119.35

EUR/JPY						Demark								Pivot					Fibonacci Zone										
当日のOHLCLから計算される翌日の						TD Range Projection				TD pivot points				StopLoss					3-days AVG										
日足	Open	High	Low	Close	値幅/日	引け形態	真の高値	真の安値	予想高値	予想安値	予想高値	予想安値	LBOP	S2	S1	PP	R1	R2	HBOP	3-days AVG	Support Zone 2	Support Zone 1	BP	Resistance Zone 1	Resistance Zone 2				
2016/12/23	122.67	122.78	122.40	122.64	38p	陽線引け	-	-	-	-	-	-	122.05	122.23	122.43	122.60	122.81	122.98	123.19					122.08 ~ 122.23	122.37 ~ 122.41	122.60	122.79 ~ 122.84	122.98 ~ 123.13	
2016/12/27	122.45	123.00	122.43	122.85	57p	陽線引け	123.00	122.43	123.21	122.64	123.21	122.64	121.95	122.19	122.52	122.76	123.09	123.33	123.66					121.97 ~ 122.19	122.41 ~ 122.48	122.76	123.05 ~ 123.11	123.33 ~ 123.55	
2016/12/28	122.84	123.25	121.70	121.97	155p	陽線引け	123.25	121.70	122.61	121.06	122.61	121.06	119.81	120.75	121.36	122.30	122.91	123.85	124.46	122.56	Bear				120.16 ~ 120.75	121.35 ~ 121.53	122.30	123.08 ~ 123.26	123.85 ~ 124.44
2016/12/29	121.97	122.37	121.59	122.30	78p	陽線引け	122.37	121.59	122.73	121.94	122.73	121.94	121.02	121.30	121.80	122.09	122.58	122.87	123.37	122.38	Bull				121.00 ~ 121.30	121.60 ~ 121.69	122.09	122.48 ~ 122.57	122.87 ~ 123.17
2016/12/30	122.30	123.83	122.20	123.01	163p	陽線引け	123.83	122.20	124.23	122.60	124.23	122.60	120.57	121.38	122.20	123.01	123.82	124.64	125.45	122.47	Bull				120.76 ~ 121.38	122.01 ~ 122.20	123.01	123.83 ~ 124.02	124.64 ~ 125.26
週足	Open	High	Low	Close	値幅/週	引け形態	真の高値	真の安値	予想高値	予想安値	予想高値	予想安値	LBOP	S2	S1	PP	R1	R2	HBOP	3-days AVG	Support Zone 2	Support Zone 1	BP	Resistance Zone 1	Resistance Zone 2				
2016/12/05 ~ 2016/12/09	119.07	123.35	118.74	121.69	461p	陽線引け	-	-	-	-	-	-	114.55	116.65	119.17	121.26	123.78	125.87	128.39					114.88 ~ 116.65	118.41 ~ 118.95	121.26	123.56 ~ 124.11	125.87 ~ 127.63	
2016/12/12 ~ 2016/12/16	121.77	124.10	121.59	123.13	251p	陽線引け	124.10	121.59	126.29	120.93	124.87	122.36	119.27	120.43	121.78	122.94	124.29	125.45	126.80					119.47 ~ 120.43	121.39 ~ 121.68	122.94	124.19 ~ 124.49	125.45 ~ 126.41	
2016/12/19 ~ 2016/12/23	123.14	123.19	121.69	122.64	150p	陽線引け	123.19	121.69	122.92	121.42	122.92	121.42	120.33	121.01	121.83	122.51	123.32	124.00	124.82	122.23	Bull				120.44 ~ 121.01	121.58 ~ 121.76	122.51	123.26 ~ 123.43	124.00 ~ 124.58
2016/12/26 ~ 2016/12/30	122.45	123.83	121.59	123.01	224p	陽線引け	123.83	121.59	124.54	122.30	124.54	122.30	119.55	120.57	121.79	122.81	124.03	125.05	126.27	122.75	Bull				119.71 ~ 120.57	121.42 ~ 121.69	122.81	123.93 ~ 124.19	125.05 ~ 125.91

EUR/USD						Demark								Pivot					Fibonacci Zone										
当日のOHLCLから計算される翌日の						TD Range Projection				TD pivot points				StopLoss					3-days AVG										
日足	Open	High	Low	Close	値幅/日	引け形態	真の高値	真の安値	予想高値	予想安値	予想高値	予想安値	LBOP	S2	S1	PP	R1	R2	HBOP	3-days AVG	Support Zone 2	Support Zone 1	BP	Resistance Zone 1	Resistance Zone 2				
2016/12/23	1.0436	1.0468	1.0427	1.0448	41p	陽線引け	-	-	-	-	-	-	1.0386	1.0406	1.0427	1.0448	1.0468	1.0489	1.0510					1.0391 ~ 1.0406	1.0422 ~ 1.0427	1.0448	1.0468 ~ 1.0473	1.0489 ~ 1.0505	
2016/12/27	1.0455	1.0463	1.0433	1.0459	30p	陽線引け	1.0463	1.0433	1.0476	1.0446	1.0476	1.0446	1.0410	1.0422	1.0440	1.0452	1.0470	1.0482	1.0501					1.0410 ~ 1.0422	1.0433 ~ 1.0437	1.0452	1.0467 ~ 1.0470	1.0482 ~ 1.0493	
2016/12/28	1.0459	1.0480	1.0372	1.0419	108p	陽線引け	1.0480	1.0372	1.0450	1.0342	1.0450	1.0342	1.0260	1.0316	1.0368	1.0424	1.0475	1.0531	1.0583	1.0441	Bear				1.0275 ~ 1.0316	1.0357 ~ 1.0370	1.0424	1.0478 ~ 1.0490	1.0531 ~ 1.0572
2016/12/29	1.0419	1.0494	1.0414	1.0493	80p	陽線引け	1.0494	1.0414	1.0533	1.0454	1.0533	1.0454	1.0361	1.0387	1.0440	1.0467	1.0520	1.0546	1.0599	1.0448	Bull				1.0357 ~ 1.0387	1.0418 ~ 1.0427	1.0467	1.0507 ~ 1.0516	1.0546 ~ 1.0577
2016/12/30	1.0493	1.0651	1.0485	1.0525	166p	陽線引け	1.0651	1.0485	1.0671	1.0505	1.0671	1.0505	1.0290	1.0388	1.0456	1.0554	1.0622	1.0720	1.0788	1.0482	Bull				1.0324 ~ 1.0388	1.0451 ~ 1.0471	1.0554	1.0637 ~ 1.0656	1.0720 ~ 1.0783
週足	Open	High	Low	Close	値幅/週	引け形態	真の高値	真の安値	予想高値	予想安値	予想高値	予想安値	LBOP	S2	S1	PP	R1	R2	HBOP	3-days AVG	Support Zone 2	Support Zone 1	BP	Resistance Zone 1	Resistance Zone 2				
2016/12/05 ~ 2016/12/09	1.0534	1.0874	1.0507	1.0559	367p	陽線引け	-	-	-	-	-	-	1.0052	1.0279	1.0419	1.0646	1.0786	1.1013	1.1153					1.0139 ~ 1.0279	1.0419 ~ 1.0463	1.0646	1.0830 ~ 1.0873	1.1013 ~ 1.1154	
2016/12/12 ~ 2016/12/16	1.0547	1.0670	1.0367	1.0443	303p	陽線引け	1.0670	1.0367	1.0556	1.0329	1.0556	1.0329	1.0014	1.0190	1.0317	1.0493	1.0619	1.0796	1.0922					1.0074 ~ 1.0190	1.0306 ~ 1.0342	1.0493	1.0645 ~ 1.0680	1.0796 ~ 1.0912	
2016/12/19 ~ 2016/12/23	1.0447	1.0499	1.0352	1.0448	147p	陽線引け	1.0499	1.0352	1.0547	1.0400	1.0547	1.0400	1.0220	1.0286	1.0367	1.0433	1.0514	1.0580	1.0661	1.0524	Bear				1.0230 ~ 1.0286	1.0342 ~ 1.0360	1.0433	1.0506 ~ 1.0524	1.0580 ~ 1.0636
2016/12/26 ~ 2016/12/30	1.0455	1.0651	1.0372	1.0525	279p	陽線引け	1.0651	1.0372	1.0727	1.0449	1.0727	1.0449	1.0102	1.0237	1.0381	1.0516	1.0660	1.0795	1.0939	1.0481	Bull				1.0131 ~ 1.0237	1.0344 ~ 1.0377	1.0516	1.0656 ~ 1.0688	1.0795 ~ 1.0901

GBP/JPY						Demark								Pivot					Fibonacci Zone						
当日のOHLCLから計算される翌日の						TD Range Projection				TD pivot points				StopLoss					3-days AVG						
日足	Open	High	Low	Close	値幅/日	引け形態	真の高値	真の安値	予想高値	予想安値	予想高値	予想安値	LBOP	S2	S1	PP	R1	R2	HBOP	3-days AVG	Support Zone 2	Support Zone 1	BP	Resistance Zone 1	Resistance Zone 2
2016/12/23	144.43	144.52	143.54	144.08	98p	陽線引け	-	-	-	-	-	-	142.60	143.07	143.57	144.									



# IMM扱い8通貨/ダウ/日経/金/オイル/主要クロス円の過去5日及び過去5週の4本値

AUDUSD					CADUSD					CHFUSD				
Date	Open	High	Low	Close	Date	Open	High	Low	Close	Date	Open	High	Low	Close
2016/12/30	0.7217	0.7246	0.7211	0.7216	2016/12/30	0.7404	0.7462	0.7403	0.7449	2016/12/30	0.9778	0.9934	0.9774	0.9820
2016/12/29	0.7182	0.7223	0.7178	0.7217	2016/12/29	0.7379	0.7418	0.7375	0.7405	2016/12/29	0.9726	0.9797	0.9723	0.9778
2016/12/28	0.7185	0.7220	0.7164	0.7182	2016/12/28	0.7365	0.7385	0.7354	0.7379	2016/12/28	0.9728	0.9742	0.9689	0.9725
2016/12/27	0.7185	0.7197	0.7173	0.7185	2016/12/27	0.7400	0.7400	0.7363	0.7365	2016/12/27	0.9735	0.9739	0.9711	0.9729
2016/12/23	0.7214	0.7228	0.7160	0.7173	2016/12/23	0.7415	0.7418	0.7376	0.7387	2016/12/23	0.9748	0.9762	0.9727	0.9729

CNYUSD					EURUSD					GBPUSD				
Date	Open	High	Low	Close	Date	Open	High	Low	Close	Date	Open	High	Low	Close
2016/12/30	0.1435	0.1437	0.1432	0.1434	2016/12/30	1.0493	1.0651	1.0485	1.0525	2016/12/30	1.2258	1.2386	1.2247	1.2323
2016/12/29	0.1434	0.1435	0.1431	0.1432	2016/12/29	1.0419	1.0494	1.0414	1.0493	2016/12/29	1.2222	1.2275	1.2210	1.2257
2016/12/28	0.1437	0.1439	0.1435	0.1435	2016/12/28	1.0459	1.0480	1.0372	1.0419	2016/12/28	1.2271	1.2296	1.2201	1.2222
2016/12/27	0.1438	0.1439	0.1436	0.1437	2016/12/27	1.0455	1.0463	1.0433	1.0459	2016/12/27	1.2277	1.2287	1.2241	1.2271
2016/12/23	0.1438	0.1440	0.1438	0.1439	2016/12/23	1.0436	1.0468	1.0427	1.0448	2016/12/23	1.2287	1.2298	1.2230	1.2274

JPYUSD					MXNUSD					NZDUSD				
Date	Open	High	Low	Close	Date	Open	High	Low	Close	Date	Open	High	Low	Close
2016/12/30	0.8580	0.8617	0.8533	0.8556	2016/12/30	0.0483	0.0486	0.0482	0.0482	2016/12/30	0.6959	0.6979	0.6938	0.6947
2016/12/29	0.8543	0.8603	0.8536	0.8580	2016/12/29	0.0483	0.0484	0.0482	0.0483	2016/12/29	0.6927	0.6971	0.6916	0.6960
2016/12/28	0.8514	0.8558	0.8488	0.8543	2016/12/28	0.0481	0.0483	0.0481	0.0482	2016/12/28	0.6893	0.6930	0.6893	0.6927
2016/12/27	0.8538	0.8539	0.8502	0.8514	2016/12/27	0.0484	0.0486	0.0481	0.0482	2016/12/27	0.6899	0.6904	0.6879	0.6894
2016/12/23	0.8506	0.8534	0.8503	0.8519	2016/12/23	0.0482	0.0485	0.0481	0.0485	2016/12/23	0.6903	0.6913	0.6863	0.6877

Nikkei 225 - Japonia (NIKKEI)					5	
Date	Open	High	Low	Close	(ドル建て終値)	出来高
2016/12/30	18997.68	19176.81	18991.59	19114.37	163.25	0 1667860100
2016/12/29	19301.04	19301.04	19092.22	19145.14	164.52	1685861504 2249148700
2016/12/28	19392.11	19442.13	19364.73	19401.72	165.12	801370816 1311437700
2016/12/27	19353.43	19478.58	19352.06	19403.06	165.39	1135623296 1749658500
2016/12/26	19394.41	19432.48	19385.94	19396.64	165.56	854912896 1441866900
週4本値	19394.41	19478.58	18991.59	19114.37	163.25	(N225銘柄計) (東証一部全体計)

XAUUSD					5営業日以内に休業日あり	
Date	Open	High	Low	Close		
2016/12/30	1158.47	1163.25	1149.85	1150.91		0
2016/12/29	1142.05	1159.59	1141.95	1158.12		0
2016/12/28	1138.36	1144.59	1136.66	1141.50		0
2016/12/27	1133.96	1150.90	1131.82	1138.81		0
2016/12/23	1132.65	1135.76	1128.38	1131.77		0
週4本値	1132.65	1163.25	1128.38	1150.91		

Dow Jones Industrial - USA (DJIA)					5営業日以内に休業日あり	
Date	Open	High	Low	Close	出来高	
2016/12/30	19833.17	19852.55	19718.67	19762.60	271303322	
2016/12/29	19835.46	19878.44	19788.94	19819.78	171569471	
2016/12/28	19964.31	19981.11	19827.31	19833.68	188346538	
2016/12/27	19943.46	19980.24	19939.80	19945.04	158540483	
2016/12/23	19908.61	19934.15	19899.06	19933.81	158263813	
週4本値	19908.61	19981.11	19718.67	19762.60	271303322	

Historical Data by **Stooq**  
 Historical Data by **MarketNewsline**  
 (ダウと日経)  
 Arrangement by **FX\_勝てば官軍?**

Crude Light Oil						5営業日以内に休業日あり	
Date	Open	High	Low	Close	Volume		
2016/12/30	53.83	54.06	53.45	53.90	0		
2016/12/29	53.63	54.19	53.47	53.84	0		
2016/12/28	53.88	54.32	53.57	53.63	722331		
2016/12/27	53.32	54.09	53.05	53.89	455227		
2016/12/23	52.69	53.27	52.27	53.23	415138		
週4本値	52.69	54.32	52.27	53.90			

USDJPY					EURJPY					GBPJPY				
日付	始値	高値	安値	終値	日付	始値	高値	安値	終値	日付	始値	高値	安値	終値
2016/12/30	116.56	117.20	116.05	116.88	2016/12/30	122.30	123.83	122.20	123.01	2016/12/30	142.88	144.59	142.70	144.03
2016/12/29	117.06	117.16	116.24	116.56	2016/12/29	121.97	122.37	121.59	122.30	2016/12/29	143.07	143.31	142.18	142.86
2016/12/28	117.45	117.81	116.85	117.06	2016/12/28	122.84	123.25	121.70	121.97	2016/12/28	144.12	144.71	142.86	143.07
2016/12/27	117.12	117.62	117.11	117.46	2016/12/27	122.45	123.00	122.43	122.85	2016/12/27	143.79	144.27	143.60	144.14
2016/12/23	117.57	117.61	117.18	117.38	2016/12/23	122.67	122.78	122.40	122.64	2016/12/23	144.43	144.52	143.54	144.08

USDJPY Weekly					EURJPY Weekly					GBPJPY Weekly				
日付	始値	高値	安値	終値	日付	始値	高値	安値	終値	日付	始値	高値	安値	終値
2016/12/30	117.12	117.81	116.05	116.88	2016/12/30	122.45	123.83	121.59	123.01	2016/12/30	143.79	144.71	142.18	144.03
2016/12/23	117.88	118.24	116.55	117.38	2016/12/23	123.14	123.19	121.69	122.64	2016/12/23	147.17	147.26	143.54	144.08
2016/12/16	115.46	118.66	114.74	117.91	2016/12/16	121.77	124.10	121.59	123.13	2016/12/16	145.39	148.46	144.92	147.16
2016/12/09	113.04	115.37	113.01	115.25	2016/12/09	119.07	123.35	118.74	121.69	2016/12/09	142.81	146.04	142.79	144.93
2016/12/02	112.88	114.83	111.36	113.56	2016/12/02	119.64	121.89	118.55	121.12	2016/12/02	140.75	145.20	138.52	144.54



# 先週のIMM取り扱い対ドル8通貨チャート

※ 赤点線は週最高値/青天線は週最低値、BB中心線はSMA21

2016/12/23 ~ 2016/12/30

Chart by OANDA Japan MetaTrader4

