

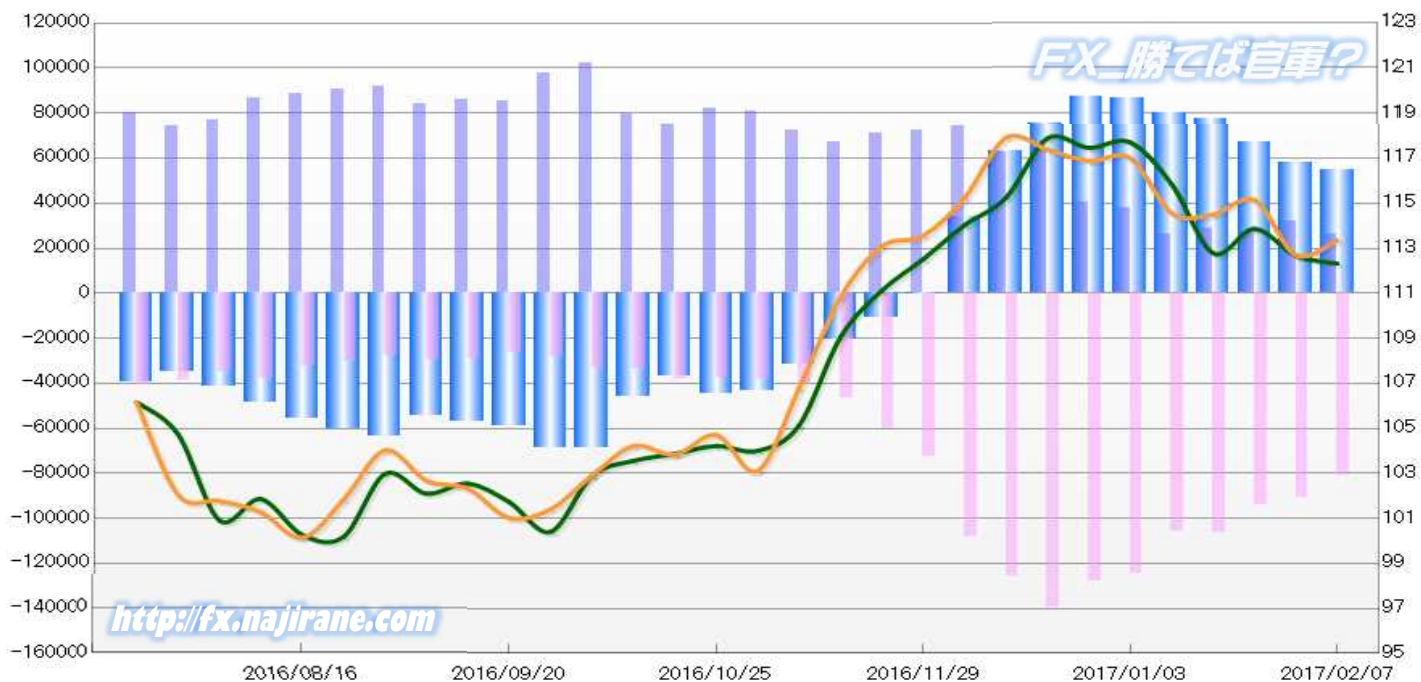
**JAPANESE YEN - CHICAGO MERCANTILE EXCHANGE**  
**2016/08/16 ~ 2017/02/07**

Code-097741  
 2017/02/10 NYクローズ時公表値

Report_Date	Non Commercial Positions												火曜日 引け値	金曜日 引け値
	Long	増減	増減(%)	Short	増減	増減(%)	売り越し	増減	増減(%)	売買計	増減	増減(%)		
2017/02/07	25874	-6342	-19.7%	80934	-9613	-10.6%	55060	-3271	-5.6%	106808	-15955	-13.0%	112.32	113.36
2017/01/31	32216	5089	18.8%	90547	-3420	-3.6%	58331	-8509	-12.7%	122763	1669	1.4%	112.67	112.69
2017/01/24	27127	-1433	-5.0%	93967	-12423	-11.7%	66840	-10990	-14.1%	121094	-13856	-10.3%	113.86	115.13
2017/01/17	28560	2519	9.7%	106390	510	0.5%	77830	-2009	-2.5%	134950	3029	2.3%	112.78	114.50
2017/01/10	26041	-11921	-31.4%	105880	-18846	-15.1%	79839	-6925	-8.0%	131921	-30767	-18.9%	115.83	114.55
2017/01/03	37962	-2603	-6.4%	124726	-2848	-2.2%	86764	-245	-0.3%	162688	-5451	-3.2%	117.70	117.00
2016/12/27	40565	-23635	-36.8%	127574	-12075	-8.6%	87009	11560	15.3%	168139	-35710	-17.5%	117.46	116.88
2016/12/20	64200	1768	2.8%	139649	13788	11.0%	75449	12020	19.0%	203849	15556	8.3%	117.88	117.38
2016/12/13	62432	-11935	-16.0%	125861	17557	16.2%	63429	29492	86.9%	188293	5622	3.1%	115.25	117.91
2016/12/06	74367	2243	3.1%	108304	35911	49.6%	33937	33668	12516.0%	182671	38154	26.4%	114.03	115.25
2016/11/29	72124	941	1.3%	72393	12110	20.1%	269	-11169	-102.5%	144517	13051	9.9%	112.52	113.56
2016/11/22	71183	4098	6.1%	60283	13874	29.9%	-10900	-9776	-47.3%	131466	17972	15.8%	111.12	113.09
2016/11/15	67085	-5534	-7.6%	46409	5746	14.1%	-20676	-11280	-35.3%	113494	212	0.2%	109.05	110.82
2016/11/08	72619	-8391	-10.4%	40663	2813	7.4%	-31956	-11204	-26.0%	113282	-5578	-4.7%	105.13	106.78
2016/11/01	81010	-1375	-1.7%	37850	60	0.2%	-43160	-1435	-3.2%	118860	-1315	-1.1%	104.00	103.11
2016/10/25	82385	7419	9.9%	37790	-185	-0.5%	-44595	7604	20.6%	120175	7234	6.4%	104.22	104.71
2016/10/18	74966	-4313	-5.4%	37975	4605	13.8%	-36991	-8918	-19.4%	112941	292	0.3%	103.87	103.83
2016/10/11	79279	-22707	-22.3%	33370	79	0.2%	-45909	-22786	-33.2%	112649	-22628	-16.7%	103.56	104.22
2016/10/04	101986	4554	4.7%	33291	4751	16.6%	-68695	-197	-0.3%	135277	9305	7.4%	102.90	102.91
2016/09/27	97432	12315	14.5%	28540	2208	8.4%	-68892	10107	17.2%	125972	14523	13.0%	100.41	101.41
2016/09/20	85117	-1023	-1.2%	26332	-2962	-10.1%	-58785	1939	3.4%	111449	-3985	-3.5%	101.73	101.03
2016/09/13	86140	2172	2.6%	29294	-185	-0.6%	-56846	2357	4.3%	115434	1987	1.8%	102.55	102.32
2016/09/06	83968	-7602	-8.3%	29479	1570	5.6%	-54489	-9172	-14.4%	113447	-6032	-5.0%	102.10	102.68
2016/08/30	91570	1183	1.3%	27909	-2162	-7.2%	-63661	3345	5.5%	119479	-979	-0.8%	102.98	104.03
2016/08/23	90387	2114	2.4%	30071	-2196	-6.8%	-60316	4310	7.7%	120458	-82	-0.1%	100.19	101.84
2016/08/16	88273			32267			-56006			120540			100.27	100.14

**JAPANESE YEN - CHICAGO MERCANTILE EXCHANGE**  
**FUTURES ONLY POSITIONS**

— 金曜終値 — 火曜終値 — Short枚数 — Long枚数 — 売り越し枚数(マイナスの場合は買越しと読替え)



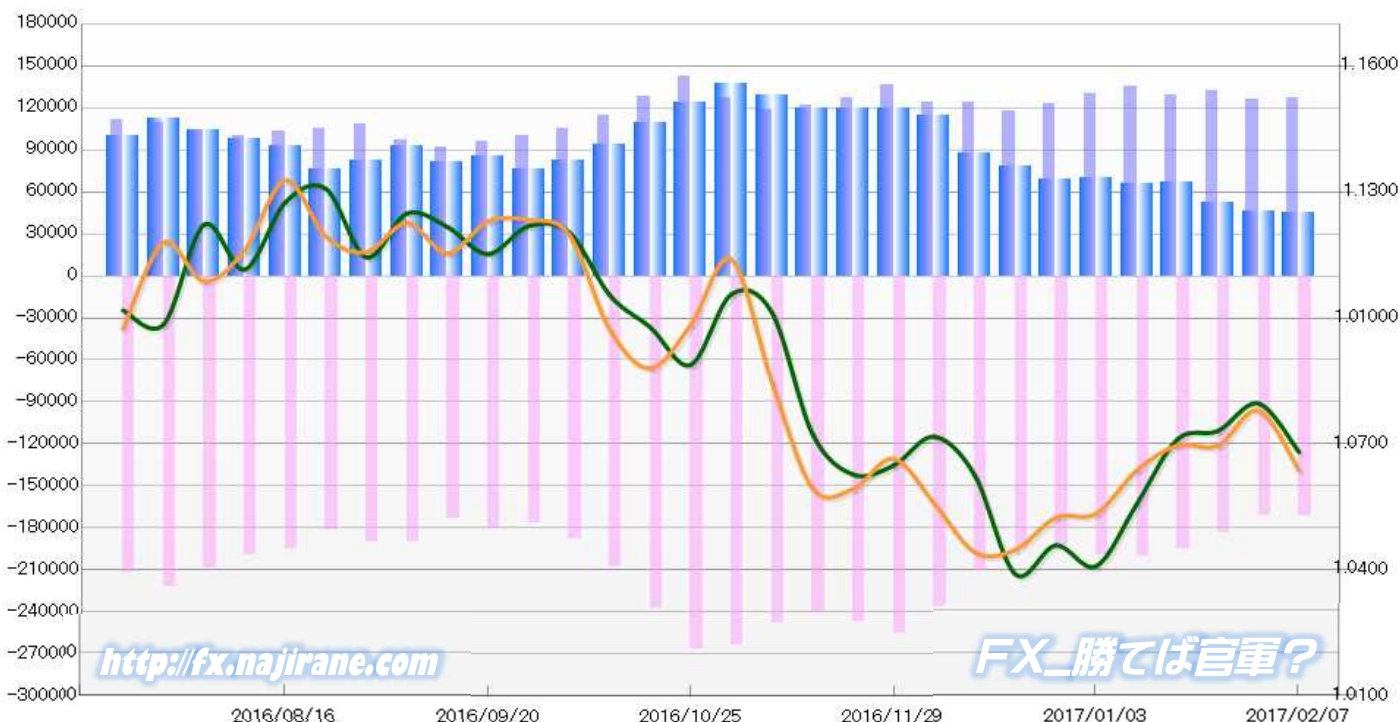
**EURO FX - CHICAGO MERCANTILE EXCHANGE**  
**2016/08/16 ~ 2017/02/07**

Code-099741  
**2017/02/10 NYクローズ時公表値**

Report_Date	Non Commercial Positions											火曜日 引け値	金曜日 引け値	
	Long	増減		Short	増減		売り越し	増減		売買計	増減			
2017/02/07	126708	1019	0.8%	171659	257	0.1%	44951	-762	-1.7%	298367	1276	0.4%	1.0681	1.0637
2017/01/31	125689	-6215	-4.7%	171402	-12850	-7.0%	45713	-6635	-12.7%	297091	-19065	-6.0%	1.0796	1.0779
2017/01/24	131904	3058	2.4%	184252	-11094	-5.7%	52348	-14152	-21.3%	316156	-8036	-2.5%	1.0731	1.0696
2017/01/17	128846	-5901	-4.4%	195346	-5224	-2.6%	66500	677	1.0%	324192	-11125	-3.3%	1.0711	1.0697
2017/01/10	134747	5046	3.9%	200570	813	0.4%	65823	-4233	-6.0%	335317	5859	1.8%	1.0558	1.0638
2017/01/03	129701	6420	5.2%	199757	7068	3.7%	70056	648	0.9%	329458	13488	4.3%	1.0410	1.0535
2016/12/27	123281	5821	5.0%	192689	-2816	-1.4%	69408	-8637	-11.1%	315970	3005	1.0%	1.0459	1.0525
2016/12/20	117460	-6137	-5.0%	195505	-15605	-7.4%	78045	-9468	-10.8%	312965	-21742	-6.5%	1.0390	1.0448
2016/12/13	123597	207	0.2%	211110	-26836	-11.3%	87513	-27043	-23.6%	334707	-26629	-7.4%	1.0626	1.0443
2016/12/06	123390	-12718	-9.3%	237946	-17402	-6.8%	114556	-4684	-3.9%	361336	-30120	-7.7%	1.0718	1.0559
2016/11/29	136108	8986	7.1%	255348	8878	3.6%	119240	-108	-0.1%	391456	17864	4.8%	1.0649	1.0665
2016/11/22	127122	5547	4.6%	246470	5713	2.4%	119348	166	0.1%	373592	11260	3.1%	1.0628	1.0593
2016/11/15	121575	2678	2.3%	240757	-7454	-3.0%	119182	-10132	-7.8%	362332	-4776	-1.3%	1.0724	1.0595
2016/11/08	118897	-7546	-6.0%	248211	-15617	-5.9%	129314	-8071	-5.9%	367108	-23163	-5.9%	1.1013	1.0847
2016/11/01	126443	-16438	-11.5%	263828	-2909	-1.1%	137385	13529	10.9%	390271	-19347	-4.7%	1.1056	1.1139
2016/10/25	142881	14700	11.5%	266737	29288	12.3%	123856	14588	13.4%	409618	43988	12.0%	1.0889	1.0984
2016/10/18	128181	13897	12.2%	237449	29693	14.3%	109268	15796	16.9%	365630	43590	13.5%	1.0978	1.0880
2016/10/11	114284	8650	8.2%	207756	20063	10.7%	93472	11413	13.9%	322040	28713	9.8%	1.1054	1.0972
2016/10/04	105634	5142	5.1%	187693	11171	6.3%	82059	6029	7.9%	293327	16313	5.9%	1.1204	1.1199
2016/09/27	100492	4794	5.0%	176522	-4201	-2.3%	76030	-8995	-10.6%	277014	593	0.2%	1.1219	1.1233
2016/09/20	95698	3915	4.3%	180723	7465	4.3%	85025	3550	4.4%	276421	11380	4.3%	1.1152	1.1230
2016/09/13	91783	-5541	-5.7%	173258	-16696	-8.8%	81475	-11155	-12.0%	265041	-22237	-7.7%	1.1217	1.1154
2016/09/06	97324	-10937	-10.1%	189954	-232	-0.1%	92630	10705	13.1%	287278	-11169	-3.7%	1.1249	1.1226
2016/08/30	108261	2887	2.7%	190186	8154	4.5%	81925	5267	6.9%	298447	11041	3.8%	1.1144	1.1157
2016/08/23	105374	2314	2.2%	182032	-13536	-6.9%	76658	-15850	-17.1%	287406	-11222	-3.8%	1.1308	1.1195
2016/08/16	103060			195568			92508			298628			1.1275	1.1328

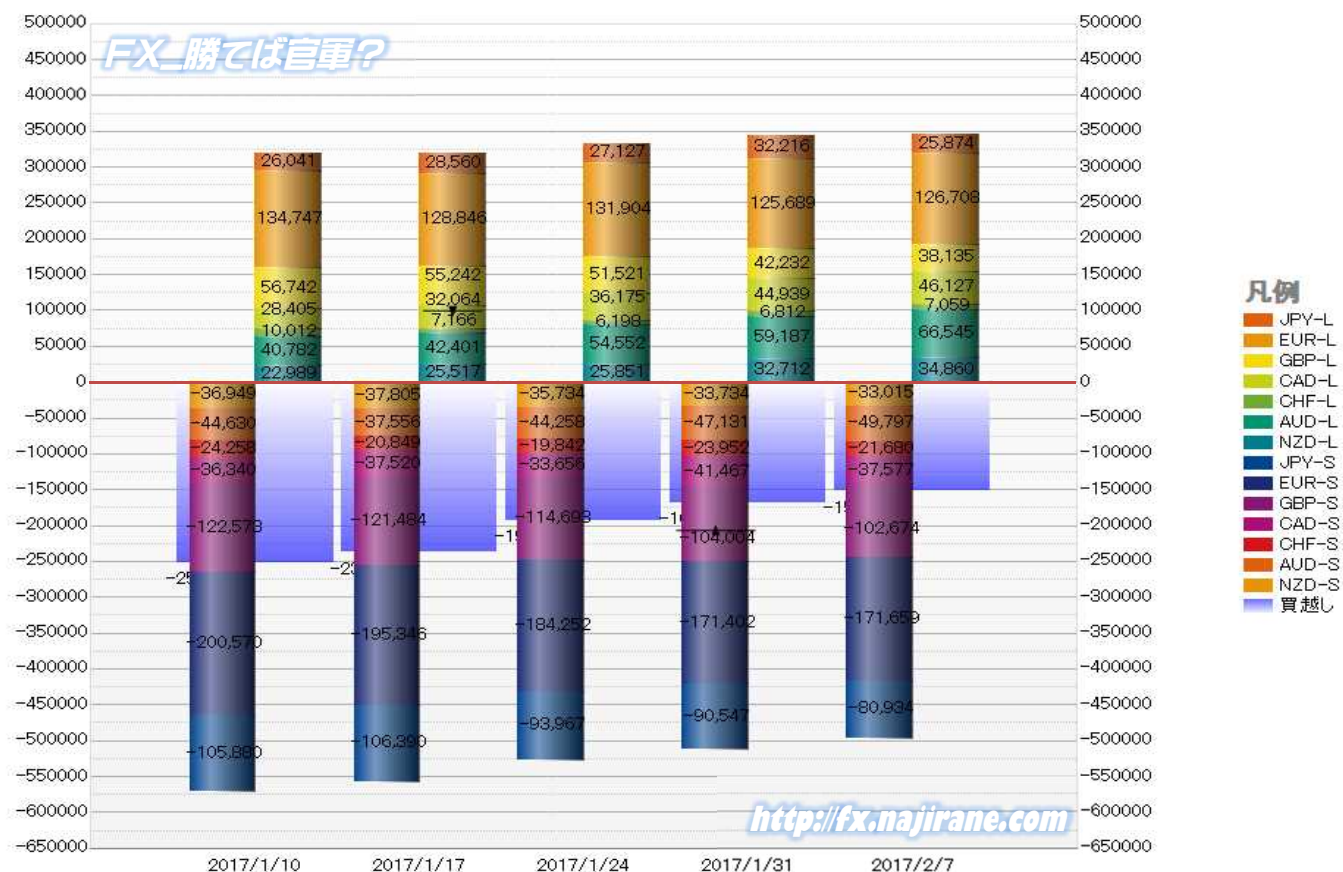
**EURO FX - CHICAGO MERCANTILE EXCHANGE**  
**FUTURES ONLY POSITIONS**

— 金曜締め週終値 — 火曜締め週終値 — Short枚数 — Long枚数 — 売り越し枚数(マイナスの場合は買越しと読替え)



	2017/01/10			2017/01/17			2017/01/24			2017/01/31			2017/02/07		
	Long	Short	売り越し	Long	Short	売り越し	Long	Short	売り越し	Long	Short	売り越し	Long	Short	売り越し
JPY	26041	105880	79839	28560	106390	77830	27127	93967	66840	32216	90547	58331	25874	80934	55060
	前週比 枚数増減 (枚)			2519	510	-2009	-1433	-12423	-10990	5089	-3420	-8509	-6342	-9613	-3271
	前週比 枚数増減 (%)			9.67%	0.48%	-2.52%	-5.02%	-11.68%	-14.12%	18.76%	-3.64%	-12.73%	-19.69%	-10.62%	-5.61%
EUR	134747	200570	65823	128846	195346	66500	131904	184252	52348	125689	171402	45713	126708	171659	44951
	前週比 枚数増減 (枚)			-5901	-5224	677	3058	-11094	-14152	-6215	-12850	-6635	1019	257	-762
	前週比 枚数増減 (%)			-4.38%	-2.60%	1.03%	2.37%	-5.68%	-21.28%	-4.71%	-6.97%	-12.67%	0.81%	0.15%	-1.67%
GBP	56742	122573	65831	55242	121484	66242	51521	114693	63172	42232	104004	61772	38135	102674	64539
	前週比 枚数増減 (枚)			-1500	-1089	411	-3721	-6791	-3070	-9289	-10689	-1400	-4097	-1330	2767
	前週比 枚数増減 (%)			-2.64%	-0.89%	0.62%	-6.74%	-5.59%	-4.63%	-18.03%	-9.32%	-2.22%	-9.70%	-1.28%	4.48%
AUD	40782	44630	3848	42401	37556	-4845	54552	44258	-10294	59187	47131	-12056	66545	49797	-16748
	前週比 枚数増減 (枚)			1619	-7074	997	12151	6702	5449	4635	2873	1762	7358	2666	4692
	前週比 枚数増減 (%)			3.97%	-15.85%	-225.91%	28.66%	17.85%	112.47%	8.50%	6.49%	17.12%	12.43%	5.66%	38.92%
CAD	28405	36340	7935	32064	37520	5456	36175	33656	-2519	44939	41467	-3472	46127	37577	-8550
	前週比 枚数増減 (枚)			3659	1180	-2479	4111	-3864	-2937	8764	7811	953	1188	-3890	5078
	前週比 枚数増減 (%)			12.88%	3.25%	-31.24%	12.82%	-10.30%	-146.17%	24.23%	23.21%	37.83%	2.64%	-9.38%	146.26%
CHF	10012	24258	14246	7166	20849	13683	6198	19842	13644	6812	23952	17140	7059	21680	14621
	前週比 枚数増減 (枚)			-2846	-3409	-563	-968	-1007	-39	614	4110	3496	247	-2272	-2519
	前週比 枚数増減 (%)			-28.43%	-14.05%	-3.95%	-13.51%	-4.83%	-0.29%	9.91%	20.71%	25.62%	3.63%	-9.49%	-14.70%
NZD	22989	36949	13960	25517	37805	12288	25851	35734	9883	32712	33734	1022	34860	33015	-1845
	前週比 枚数増減 (枚)			2528	856	-1672	334	-2071	-2405	6861	-2000	-8861	2148	-719	823
	前週比 枚数増減 (%)			11.00%	2.32%	-11.98%	1.31%	-5.48%	-19.57%	26.54%	-5.60%	-89.66%	6.57%	-2.13%	-280.53%
MXN	23878	95654	71776	22573	95894	73321	32133	96787	64654	26000	89208	63208	31229	89717	58488
	前週比 枚数増減 (枚)			-1305	240	1545	9560	893	-8667	-6133	-7579	-1446	5229	509	-4720
	前週比 枚数増減 (%)			-5.47%	0.25%	2.15%	42.35%	0.93%	-11.82%	-19.09%	-7.83%	-2.24%	20.11%	0.57%	-7.47%
Total All 8	343596	666854	323258	342369	652844	310475	365461	623189	257728	369787	601445	231658	376537	587053	210516
	前週比 枚数増減 (枚)			-1227	-14010	-12783	23092	-29655	-52747	4326	-21744	-26070	6750	-14392	-21142
	前週比 枚数増減 (%)			-0.36%	-2.10%	-3.95%	6.74%	-4.54%	-16.99%	1.18%	-3.49%	-10.12%	1.83%	-2.39%	-9.13%
Total 7 (MXN除く)	319718	571200	251482	319796	556950	237154	333328	526402	193074	343787	512237	168450	345308	497336	152028
	前週比 枚数増減 (枚)			78	-14250	-14328	13532	-30548	-44080	10459	-14165	-24624	1521	-14901	-16422
	前週比 枚数増減 (%)			0.0%	-2.5%	-5.7%	4.2%	-5.5%	-18.6%	3.1%	-2.7%	-12.8%	0.4%	-2.9%	-9.7%

### 直近5週 CFTC IMM主要7通貨の構成

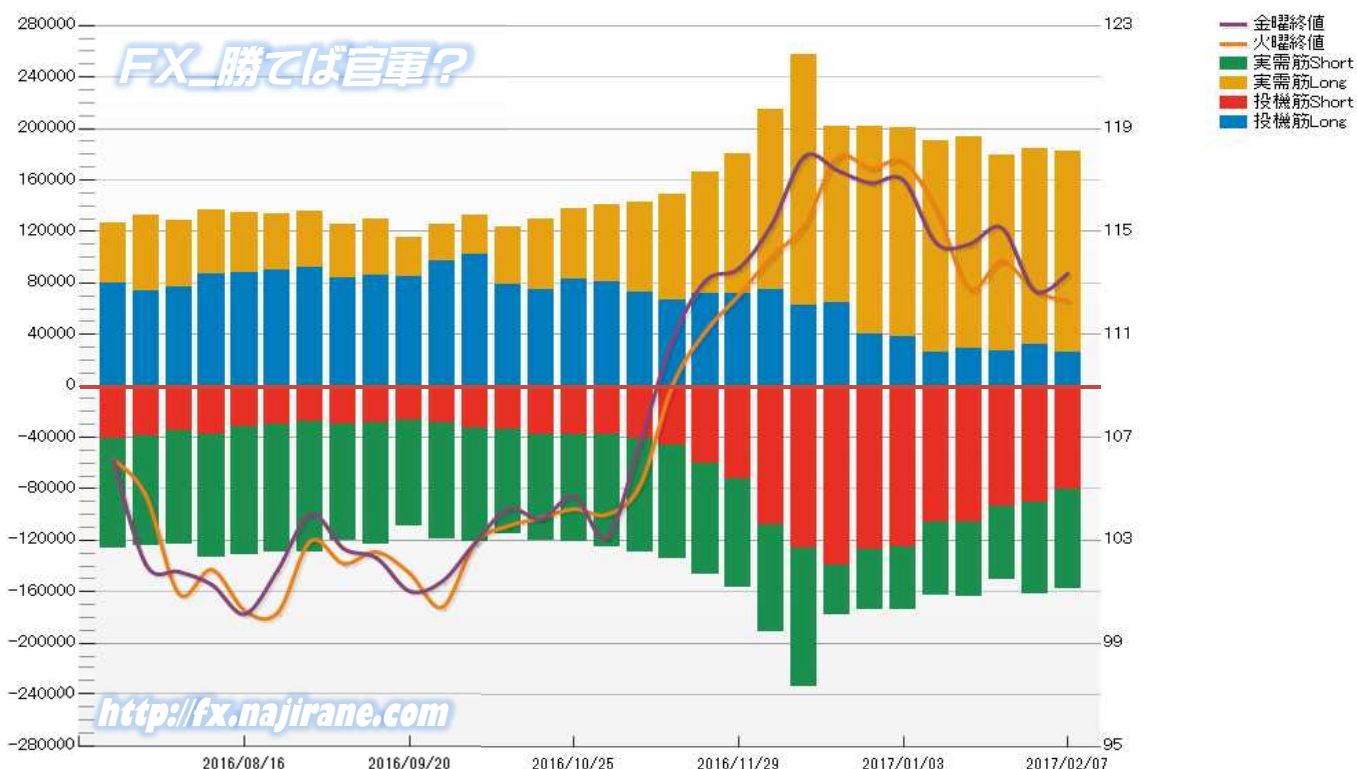


JAPANESE YEN - CHICAGO MERCANTILE EXCHANGE  
FUTURES ONLY POSITIONS

Code-097741  
2017/02/10 公表値

Date	投機筋集計				実需筋集計				投機筋+実需筋合計				ドル円終値	
	円買い	円売り	売り越し	売買計	円買い	円売り	売り越し	売買計	円買い	円売り	売り越し	売買計	火曜締め	金曜締め
2017/02/07	25874	80934	55060	106808	156236	77214	-79022	233450	182110	158148	-23962	340258	112.32	113.36
2017/01/31	32216	90547	58331	122763	152598	71166	-81432	223764	184814	161713	-23101	346527	112.67	112.69
2017/01/24	27127	93967	66840	121094	152556	56703	-95853	209259	179683	150670	-29013	330353	113.86	115.13
2017/01/17	28560	106390	77830	134950	164514	57301	-107213	221815	193074	163691	-29383	356765	112.78	114.50
2017/01/10	26041	105880	79839	131921	164249	56661	-107588	220910	190290	162541	-27749	352831	115.83	114.55
2017/01/03	37962	124726	86764	162688	162764	48801	-113963	211565	200726	173527	-27199	374253	117.70	117.00
2016/12/27	40565	127574	87009	168139	160533	46704	-113829	207237	201098	174278	-26820	375376	117.46	116.88
2016/12/20	64200	139649	75449	203849	137201	37978	-99223	175179	201401	177627	-23774	379028	117.88	117.38
2016/12/13	62432	125861	63429	188293	194893	107464	-87429	302357	257325	233325	-24000	490650	115.25	117.91
2016/12/06	74367	108304	33937	182671	140357	83264	-57093	223621	214724	191568	-23156	406292	114.03	115.25
2016/11/29	72124	72393	269	144517	108163	83995	-24168	192158	180287	156388	-23899	336675	112.52	113.56
2016/11/22	71183	60283	-10900	131466	95166	86202	-8964	181368	166349	146485	-19864	312834	111.12	113.09
2016/11/15	67085	46409	-20676	113494	81503	88408	6905	169911	148588	134817	-13771	283405	109.05	110.82
2016/11/08	72619	40663	-31956	113282	69838	88139	18301	157977	142457	128802	-13655	271259	105.13	106.78
2016/11/01	81010	37850	-43160	118860	59272	87511	28239	146783	140282	125361	-14921	265643	104.00	103.11
2016/10/25	82385	37790	-44595	120175	55555	83712	28157	139267	137940	121502	-16438	259442	104.22	104.71
2016/10/18	74966	37975	-36991	112941	54359	81884	27525	136243	129325	119859	-9466	249184	103.87	103.83
2016/10/11	79279	33370	-45909	112649	43806	81544	37738	125350	123085	114914	-8171	237999	103.56	104.22
2016/10/04	101986	33291	-68695	135277	30627	87820	57193	118447	132613	121111	-11502	253724	102.90	102.91
2016/09/27	97432	28540	-68892	125972	28326	90589	62263	118915	125758	119129	-6629	244887	100.41	101.41
2016/09/20	85117	26332	-58785	111449	29715	83021	53306	112736	114832	109353	-5479	224185	101.73	101.03
2016/09/13	86140	29294	-56846	115434	43492	93700	50208	137192	129632	122994	-6638	252626	102.55	102.32
2016/09/06	83968	29479	-54489	113447	41120	91024	49904	132144	125088	120503	-4585	245591	102.10	102.68
2016/08/30	91570	27909	-63661	119479	44366	101570	57204	145936	135936	129479	-6457	265415	102.98	104.03
2016/08/23	90387	30071	-60316	120458	43245	99482	56237	142727	133632	129553	-4079	263185	100.19	101.84
2016/08/16	88273	32267	-56006	120540	46280	99196	52916	145476	134553	131463	-3090	266016	100.27	100.14
2016/08/09	86719	37888	-48831	124607	49619	95343	45724	144962	136338	133231	-3107	269569	101.86	101.28
2016/08/02	76575	34875	-41700	111450	51707	88074	36367	139781	128282	122949	-5333	251231	100.92	101.78
2016/07/26	74074	39116	-34958	113190	58947	85458	26511	144405	133021	124574	-8447	257595	104.74	102.05
2016/07/19	79864	40511	-39353	120375	46993	85719	38726	132712	126857	126230	-627	253087	106.17	106.16

JAPANESE YEN - CHICAGO MERCANTILE EXCHANGE  
FUTURES ONLY POSITIONS Code-097741

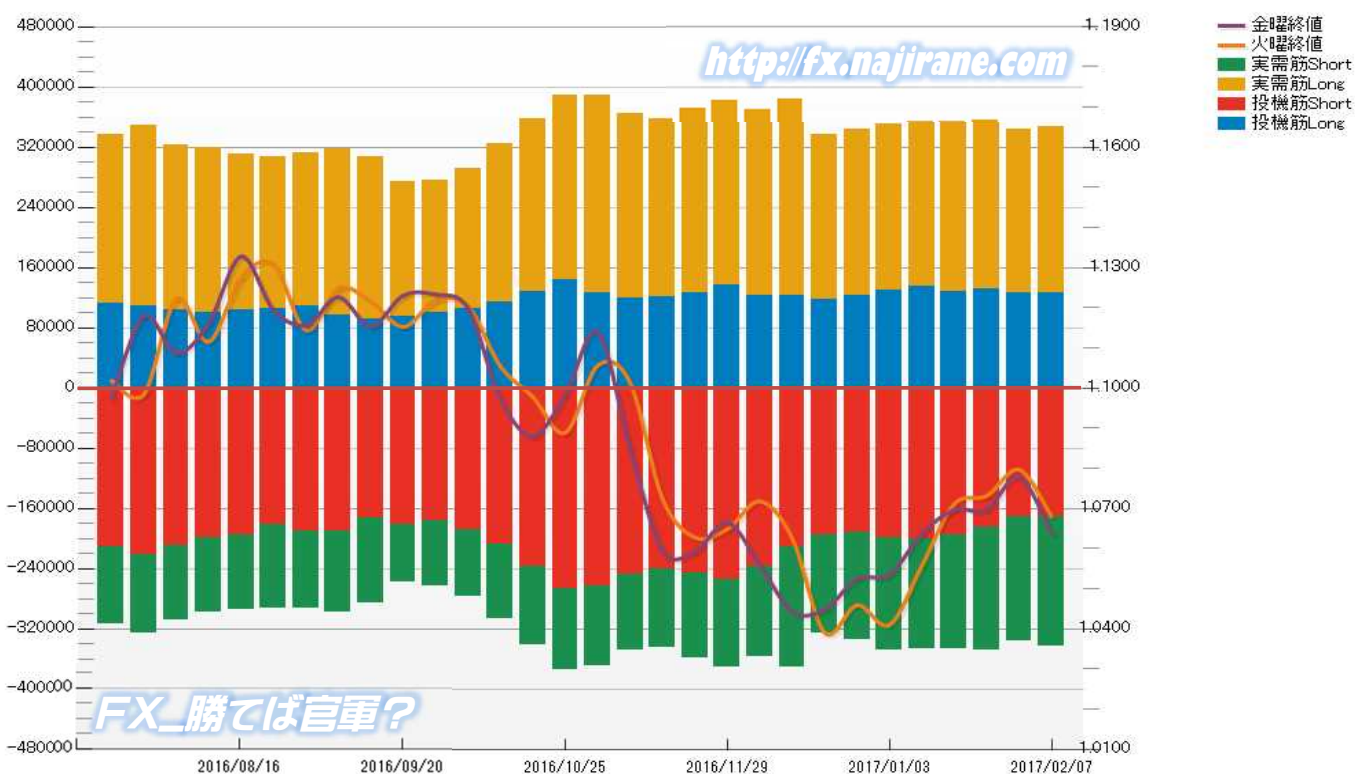


**EURO FX - CHICAGO MERCANTILE EXCHANGE  
FUTURES ONLY POSITIONS**

**Code-099741  
2017/02/10 公表値**

Date	投機筋集計				実需筋集計				投機筋+実需筋合計				ユーロドル終値	
	EUR買い	EUR売り	売り越し	売買計	EUR買い	EUR売り	売り越し	売買計	EUR買い	EUR売り	売り越し	売買計	火曜締め	金曜締め
2017/02/07	126708	171659	44951	298367	220490	171635	-48855	392125	347198	343294	-3904	690492	1.0681	1.0637
2017/01/31	125689	171402	45713	297091	218274	164996	-53278	383270	343963	336398	-7565	680361	1.0796	1.0779
2017/01/24	131904	184252	52348	316156	224017	163750	-60267	387767	355921	348002	-7919	703923	1.0731	1.0696
2017/01/17	128846	195346	66500	324192	225333	150756	-74577	376089	354179	346102	-8077	700281	1.0711	1.0697
2017/01/10	134747	200570	65823	335317	219984	147154	-72830	367138	354731	347724	-7007	702455	1.0558	1.0638
2017/01/03	129701	199757	70056	329458	221781	148076	-73705	369857	351482	347833	-3649	699315	1.0410	1.0535
2016/12/27	123281	192689	69408	315970	220288	141332	-78956	361620	343569	334021	-9548	677590	1.0459	1.0525
2016/12/20	117460	195505	78045	312965	219648	130749	-88899	350397	337108	326254	-10854	663362	1.0390	1.0448
2016/12/13	123597	211110	87513	334707	259537	160236	-99301	419773	383134	371346	-11788	754480	1.0626	1.0443
2016/12/06	123390	237946	114556	361336	246681	120065	-126616	366746	370071	358011	-12060	728082	1.0718	1.0559
2016/11/29	136108	255348	119240	391456	245355	116561	-128794	361916	381463	371909	-9554	753372	1.0649	1.0665
2016/11/22	127122	246470	119348	373592	243796	111726	-132070	355522	370918	358196	-12722	729114	1.0628	1.0593
2016/11/15	121575	240757	119182	362332	235596	104624	-130972	340220	357171	345381	-11790	702552	1.0724	1.0595
2016/11/08	118897	248211	129314	367108	245616	101035	-144581	346651	364513	349246	-15267	713759	1.1013	1.0847
2016/11/01	126443	263828	137385	390271	261922	105533	-156389	367455	388365	369361	-19004	757726	1.1056	1.1139
2016/10/25	142881	266737	123856	409618	246230	108147	-138083	354377	389111	374884	-14227	763995	1.0889	1.0984
2016/10/18	128181	237449	109268	365630	230197	104790	-125407	334987	358378	342239	-16139	700617	1.0978	1.0880
2016/10/11	114284	207756	93472	322040	209879	99131	-110748	309010	324163	306887	-17276	631050	1.1054	1.0972
2016/10/04	105634	187693	82059	293327	186827	89483	-97344	276310	292461	277176	-15285	569637	1.1204	1.1199
2016/09/27	100492	176522	76030	277014	174828	86986	-87842	261814	275320	263508	-11812	538828	1.1219	1.1233
2016/09/20	95698	180723	85025	276421	177910	77967	-99943	255877	273608	258690	-14918	532298	1.1152	1.1230
2016/09/13	91783	173258	81475	265041	216048	112825	-103223	328873	307831	286083	-21748	593914	1.1217	1.1154
2016/09/06	97324	189954	92630	287278	220781	107441	-113340	328222	318105	297395	-20710	615500	1.1249	1.1226
2016/08/30	108261	190186	81925	298447	204241	103433	-100808	307674	312502	293619	-18883	606121	1.1144	1.1157
2016/08/23	105374	182032	76658	287406	202180	111006	-91174	313186	307554	293038	-14516	600592	1.1308	1.1195
2016/08/16	103060	195568	92508	298628	208203	99798	-108405	308001	311263	295366	-15897	606629	1.1275	1.1328
2016/08/09	100442	198841	98399	299283	218984	99470	-119514	318454	319426	298311	-21115	617737	1.1115	1.1161
2016/08/02	104516	208619	104103	313135	218778	99452	-119326	318230	323294	308071	-15223	631365	1.1222	1.1087
2016/07/26	109193	221793	112600	330986	239073	103338	-135735	342411	348266	325131	-23135	673397	1.0985	1.1179
2016/07/19	111578	211469	99891	323047	225909	101654	-124255	327563	337487	313123	-24364	650610	1.1018	1.0974

**EURO FX - CHICAGO MERCANTILE EXCHANGE  
FUTURES ONLY POSITIONS Code-099741**



# CME Daily Volume

シカゴ・マーカントイル取引所 取扱高日次データ

FX\_勝てば官軍?

<http://fx.najirane.com>

EU Euro		取扱高			当日含む前5営業日計			参考レート	
Date	CALL	PUT	FUTURE	CALL	PUT	FUTURE	Open	Close	
2017/2/9 (木)	6080	7106	166008	31223	28301	886979	1.0695	1.0654	
2017/2/8 (水)	7450	4354	186305	31759	27943	912951	1.0681	1.0696	
2017/2/7 (火)	3278	3755	175825	30138	29533	940874	1.0748	1.0681	
2017/2/6 (月)	5900	5680	151779	42216	37095	1058347	1.0785	1.0748	
2017/2/3 (金)	8515	7406	207062	39297	37765	1111023	1.0761	1.0779	
2017/2/2 (木)	6616	6748	191980	36459	34278	1079961	1.0767	1.0762	
2017/2/1 (水)	5829	5944	214228	36792	35731	1093350	1.0796	1.0767	
2017/1/31 (火)	15356	11317	293298	34397	33055	1046237	1.0701	1.0796	
2017/1/30 (月)	2981	6350	204455	21278	25899	900832	1.0714	1.0701	
2017/1/27 (金)	5677	3919	176000	21095	23350	892021	1.0681	1.0696	

AUS Dollar		取扱高			当日含む前5営業日計			参考レート	
Date	CALL	PUT	FUTURE	CALL	PUT	FUTURE	Open	Close	
2017/2/9 (木)	929	718	80143	5752	6816	390937	0.7641	0.7623	
2017/2/8 (水)	398	540	66747	8837	8847	412823	0.7624	0.7640	
2017/2/7 (火)	921	1550	82303	8808	9482	422684	0.7658	0.7624	
2017/2/6 (月)	1584	1118	63662	9090	10111	436905	0.7678	0.7656	
2017/2/3 (金)	1920	2890	98082	7707	9289	433506	0.7658	0.7683	
2017/2/2 (木)	4014	2749	102029	6321	7264	407543	0.7580	0.7657	
2017/2/1 (水)	369	1175	76608	2908	5427	370281	0.7580	0.7580	
2017/1/31 (火)	1203	2179	96524	3403	5227	405959	0.7559	0.7580	
2017/1/30 (月)	201	296	60263	2836	3524	390412	0.7558	0.7558	
2017/1/27 (金)	534	865	72119	3187	3599	406476	0.7529	0.7548	

CHE Franc		取扱高			当日含む前5営業日計			参考レート	
Date	CALL	PUT	FUTURE	CALL	PUT	FUTURE	Open	Close	
2017/2/9 (木)	87	0	26	536	0	60	1.0052	0.9985	
2017/2/8 (水)	170	0	1	454	0	39	1.0024	1.0052	
2017/2/7 (火)	39	0	25	410	0	39	1.0093	1.0024	
2017/2/6 (月)	234	0	3	441	0	42	1.0078	1.0092	
2017/2/3 (金)	6	0	5	731	0	43	1.0075	1.0074	
2017/2/2 (木)	5	0	5	727	0	49	1.0067	1.0075	
2017/2/1 (水)	126	0	1	722	0	58	1.0105	1.0067	
2017/1/31 (火)	70	0	28	597	0	76	1.0052	1.0105	
2017/1/30 (月)	524	0	4	577	0	91	1.0022	1.0052	
2017/1/27 (金)	2	0	11	53	0	96	0.9998	1.0008	

JPN Yen		取扱高			当日含む前5営業日計			参考レート	
Date	CALL	PUT	FUTURE	CALL	PUT	FUTURE	Open	Close	
2017/2/9 (木)	5256	8214	151748	19249	31799	734354	111.85	113.32	
2017/2/8 (水)	2586	3969	129825	19347	31633	755195	112.32	111.85	
2017/2/7 (火)	2032	3832	128351	19651	29953	796816	111.80	112.32	
2017/2/6 (月)	5118	8246	141115	22654	33387	929519	112.56	111.82	
2017/2/3 (金)	4257	7538	183315	19057	27151	944554	112.87	112.69	
2017/2/2 (木)	5354	8048	172589	17808	22008	898572	113.29	112.86	
2017/2/1 (水)	2890	2289	171446	15430	17412	884018	112.67	113.29	
2017/1/31 (火)	5035	7266	261054	15207	16048	868431	113.74	112.67	
2017/1/30 (月)	1521	2010	156150	12906	9709	758866	114.89	113.74	
2017/1/27 (金)	3008	2395	137333	13095	11067	817316	114.54	115.13	

CAN Dollar		取扱高			当日含む前5営業日計			参考レート	
Date	CALL	PUT	FUTURE	CALL	PUT	FUTURE	Open	Close	
2017/2/9 (木)	374	290	51221	2499	2997	253381	0.7609	0.7612	
2017/2/8 (水)	369	281	41306	2800	3820	256493	0.7585	0.7609	
2017/2/7 (火)	450	418	53239	3101	4707	274161	0.7646	0.7585	
2017/2/6 (月)	582	746	58617	3797	5325	301946	0.7678	0.7646	
2017/2/3 (金)	724	1262	48998	3362	4940	289109	0.7676	0.7675	
2017/2/2 (木)	675	1113	54333	3323	4598	288135	0.7667	0.7677	
2017/2/1 (水)	670	1168	58974	3453	4680	285352	0.7667	0.7667	
2017/1/31 (火)	1146	1036	81024	4205	4887	297611	0.7625	0.7667	
2017/1/30 (月)	147	361	45780	4243	5833	298991	0.7615	0.7625	
2017/1/27 (金)	685	920	48024	4495	6247	325748	0.7638	0.7611	

NZL Dollar		取扱高			当日含む前5営業日計			参考レート	
Date	CALL	PUT	FUTURE	CALL	PUT	FUTURE	Open	Close	
2017/2/9 (木)	0	0	31228	0	0	134038	0.7246	0.7182	
2017/2/8 (水)	0	0	28302	0	0	127509	0.7296	0.7247	
2017/2/7 (火)	0	0	18297	0	0	125936	0.7319	0.7296	
2017/2/6 (月)	0	0	24504	0	0	127433	0.7310	0.7319	
2017/2/3 (金)	0	0	25178	0	0	129570	0.7285	0.7315	
2017/2/2 (木)	0	0	29655	0	0	123828	0.7256	0.7286	
2017/2/1 (水)	0	0	29799	0	0	119556	0.7300	0.7256	
2017/1/31 (火)	0	0	20434	0	0	117504	0.7285	0.7300	
2017/1/30 (月)	0	0	18762	0	0	110557	0.7270	0.7285	
2017/1/27 (金)	0	0	20906	0	0	117847	0.7242	0.7263	

MEX Peso		取扱高			当日含む前5営業日計			参考レート	
Date	CALL	PUT	FUTURE	CALL	PUT	FUTURE	Open	Close	
2017/2/9 (木)	52	2	36779	2626	116	171282	4.8792	4.9073	
2017/2/8 (水)	25	1	26919	2956	123	178996	4.8477	4.8823	
2017/2/7 (火)	0	69	27751	2950	144	181981	4.8297	4.8539	
2017/2/6 (月)	17	1	32209	2973	188	190436	4.9080	4.8553	
2017/2/3 (金)	2532	43	47624	3014	191	195559	4.8578	4.9085	
2017/2/2 (木)	382	9	44493	903	842	207849	4.8561	4.8705	
2017/2/1 (水)	19	22	29904	822	953	243221	4.8216	4.8258	
2017/1/31 (火)	23	113	36206	992	1047	263133	4.8034	4.7944	
2017/1/30 (月)	58	4	37332	1512	962	262010	4.8062	4.8141	
2017/1/27 (金)	421	694	59914	1464	989	275765	4.7178	4.7873	

# 過去5日及び過去4週の4本値と各種ピボット

# 2017/02/06 ~ 2017/02/10

USD/JPY										Demark						Pivot						Fibonacci Zone						
当日のOHLCLから計算される翌日の										TD Range Projection						TD pivot points												
日足	Open	High	Low	Close	値幅/日	引け形態	真の高値	真の安値	予想高値	予想安値	予想高値	予想安値	StopLoss	Support	Pivot	Resistance	StopLoss	3-days AVG	Support Zone 2	Support Zone 1	BP	Resistance Zone 1	Resistance Zone 2					
													LBP0P	S2	S1	PP	R1	R2	HBOP									
2017/02/06	112.56	112.77	111.63	111.82	114p	陰線引け	-	-	-	-	-	-	110.23	110.93	111.37	112.07	112.52	113.22	113.66				110.49 ~ 110.93	111.37 ~ 111.50	112.07	112.64 ~ 112.78	113.22 ~ 113.65	
2017/02/07	111.80	112.51	111.60	112.32	91p	陽線引け	112.51	111.60	112.87	111.96	112.87	111.96	110.87	111.24	111.78	112.14	112.68	113.05	113.59				110.89 ~ 111.24	111.58 ~ 111.69	112.14	112.60 ~ 112.70	113.05 ~ 113.40	
2017/02/08	112.32	112.55	111.64	111.85	90p	陽線引け	112.55	111.64	112.20	111.29	112.20	111.29	110.58	111.11	111.48	112.01	112.38	112.91	113.28	112.08	Bear			110.76 ~ 111.11	111.45 ~ 111.56	112.01	112.46 ~ 112.57	112.91 ~ 113.26
2017/02/09	111.85	113.35	111.84	113.32	151p	陽線引け	113.35	111.84	114.09	112.58	114.09	112.58	110.81	111.33	112.32	112.84	113.83	114.34	115.34	112.33	Bull			110.75 ~ 111.33	111.90 ~ 112.08	112.84	113.59 ~ 113.77	114.34 ~ 114.92
2017/02/10	113.31	113.86	112.86	113.36	100p	陽線引け	113.86	112.86	114.11	113.11	114.11	113.11	111.86	112.36	112.86	113.36	113.86	114.35	114.85	112.74	Bull			111.98 ~ 112.36	112.74 ~ 112.86	113.36	113.86 ~ 113.97	114.35 ~ 114.73
週足	Open	High	Low	Close	値幅/週	引け形態	真の高値	真の安値	予想高値	予想安値	予想高値	予想安値	LBP0P	S2	S1	PP	R1	R2	HBOP	3-days AVG	Support Zone 2	Support Zone 1	BP	Resistance Zone 1	Resistance Zone 2			
2017/01/16 ~ 2017/01/20	114.42	115.62	112.58	114.50	304p	陽線引け	-	-	-	-	-	-	109.80	111.19	112.84	114.23	115.89	117.27	118.93				110.03 ~ 111.19	112.35 ~ 112.71	114.23	115.75 ~ 116.11	117.27 ~ 118.43	
2017/01/23 ~ 2017/01/27	114.39	115.38	112.53	115.13	285p	陽線引け	115.38	112.58	116.65	113.85	116.68	113.83	110.47	111.50	113.31	114.34	116.16	117.19	119.01				110.41 ~ 111.50	112.58 ~ 112.92	114.34	115.77 ~ 116.10	117.19 ~ 118.28	
2017/01/30 ~ 2017/02/03	114.89	114.96	112.06	112.69	290p	陰線引け	115.13	112.06	113.91	110.84	113.82	110.93	108.62	110.34	111.52	113.24	114.41	116.13	117.31	113.94	Bear			109.24 ~ 110.34	111.45 ~ 111.79	113.24	114.68 ~ 115.03	116.13 ~ 117.24
2017/02/06 ~ 2017/02/10	112.56	113.86	111.60	113.36	225p	陽線引け	113.86	111.60	114.73	112.48	114.73	112.48	109.77	110.69	112.02	112.94	114.27	115.19	116.53	113.51	Bear			109.83 ~ 110.69	111.55 ~ 111.81	112.94	114.07 ~ 114.33	115.19 ~ 116.05

EUR/JPY										Demark						Pivot						Fibonacci Zone						
当日のOHLCLから計算される翌日の										TD Range Projection						TD pivot points												
日足	Open	High	Low	Close	値幅/日	引け形態	真の高値	真の安値	予想高値	予想安値	予想高値	予想安値	StopLoss	Support	Pivot	Resistance	StopLoss	3-days AVG	Support Zone 2	Support Zone 1	BP	Resistance Zone 1	Resistance Zone 2					
													LBP0P	S2	S1	PP	R1	R2	HBOP									
2017/02/06	121.40	121.50	119.96	120.18	154p	陰線引け	-	-	-	-	-	-	118.05	119.01	119.60	120.55	121.14	122.09	122.68				118.42 ~ 119.01	119.60 ~ 119.78	120.55	121.32 ~ 121.50	122.09 ~ 122.68	
2017/02/07	120.17	120.20	119.55	119.96	66p	陽線引け	120.20	119.55	120.08	119.42	120.08	119.42	118.94	119.24	119.60	119.90	120.26	120.56	120.92				118.99 ~ 119.24	119.49 ~ 119.57	119.90	120.23 ~ 120.31	120.56 ~ 120.81	
2017/02/08	119.96	120.10	119.33	119.63	77p	陽線引け	120.10	119.33	119.86	119.09	119.86	119.09	118.50	118.92	119.27	119.69	120.04	120.46	120.81	120.05	Bear			118.62 ~ 118.92	119.21 ~ 119.30	119.69	120.07 ~ 120.16	120.46 ~ 120.75
2017/02/09	119.63	120.79	119.62	120.73	117p	陽線引け	120.79	119.62	121.34	120.18	121.34	120.18	118.80	119.21	119.97	120.38	121.14	121.55	122.30	119.99	Bull			118.77 ~ 119.21	119.66 ~ 119.80	120.38	120.96 ~ 121.10	121.55 ~ 121.99
2017/02/10	120.70	121.34	120.23	120.58	111p	陽線引け	121.34	120.23	120.96	119.85	120.96	119.85	118.98	119.60	120.09	120.71	121.20	121.82	122.31	120.26	Bull			119.18 ~ 119.60	120.03 ~ 120.16	120.71	121.27 ~ 121.40	121.82 ~ 122.24
週足	Open	High	Low	Close	値幅/週	引け形態	真の高値	真の安値	予想高値	予想安値	予想高値	予想安値	LBP0P	S2	S1	PP	R1	R2	HBOP	3-days AVG	Support Zone 2	Support Zone 1	BP	Resistance Zone 1	Resistance Zone 2			
2017/01/16 ~ 2017/01/20	121.55	122.93	120.55	122.47	240p	陽線引け	-	-	-	-	-	-	118.63	119.59	121.03	121.99	123.43	124.39	125.84				118.67 ~ 119.59	120.50 ~ 120.79	121.99	123.19 ~ 123.47	124.39 ~ 125.31	
2017/01/23 ~ 2017/01/27	122.44	123.31	121.14	123.15	217p	陽線引け	123.31	120.55	124.61	121.85	124.32	122.14	119.58	120.36	121.75	122.53	123.93	124.71	126.10				119.53 ~ 120.36	121.19 ~ 121.45	122.53	123.62 ~ 123.88	124.71 ~ 125.54	
2017/01/30 ~ 2017/02/03	123.10	123.12	121.02	121.47	210p	陰線引け	123.15	121.02	122.31	120.19	122.30	120.20	118.52	119.77	120.62	121.87	122.72	123.97	124.82	122.13	Bear			118.97 ~ 119.77	120.58 ~ 120.82	121.87	122.92 ~ 123.17	123.97 ~ 124.78
2017/02/06 ~ 2017/02/10	121.40	121.50	119.33	120.58	217p	陽線引け	121.50	119.33	121.04	118.87	121.04	118.87	117.27	118.30	119.44	120.47	121.61	122.64	123.78	121.63	Bear			117.47 ~ 118.30	119.13 ~ 119.38	120.47	121.56 ~ 121.81	122.64 ~ 123.47

EUR/USD										Demark						Pivot						Fibonacci Zone						
当日のOHLCLから計算される翌日の										TD Range Projection						TD pivot points												
日足	Open	High	Low	Close	値幅/日	引け形態	真の高値	真の安値	予想高値	予想安値	予想高値	予想安値	StopLoss	Support	Pivot	Resistance	StopLoss	3-days AVG	Support Zone 2	Support Zone 1	BP	Resistance Zone 1	Resistance Zone 2					
													LBP0P	S2	S1	PP	R1	R2	HBOP									
2017/02/06	1.0785	1.0789	1.0706	1.0748	82p	陰線引け	-	-	-	-	-	-	1.0624	1.0665	1.0707	1.0748	1.0789	1.0830	1.0872				1.0634 ~ 1.0665	1.0697 ~ 1.0706	1.0748	1.0789 ~ 1.0799	1.0830 ~ 1.0861	
2017/02/07	1.0748	1.0749	1.0656	1.0681	93p	陽線引け	1.0749	1.0656	1.0715	1.0622	1.0715	1.0622	1.0549	1.0602	1.0641	1.0695	1.0734	1.0788	1.0827				1.0567 ~ 1.0602	1.0638 ~ 1.0649	1.0695	1.0742 ~ 1.0753	1.0788 ~ 1.0824	
2017/02/08	1.0681	1.0713	1.0641	1.0696	72p	陽線引け	1.0713	1.0641	1.0740	1.0668	1.0740	1.0668	1.0581	1.0611	1.0653	1.0683	1.0725	1.0755	1.0797	1.0709	Bear			1.0583 ~ 1.0611	1.0638 ~ 1.0647	1.0683	1.0719 ~ 1.0728	1.0755 ~ 1.0783
2017/02/09	1.0695	1.0710	1.0651	1.0654	58p	陽線引け	1.0710	1.0651	1.0682	1.0624	1.0682	1.0624	1.0576	1.0614	1.0634	1.0672	1.0692	1.0730	1.0750	1.0683	Bear			1.0591 ~ 1.0614	1.0636 ~ 1.0643	1.0672	1.0701 ~ 1.0708	1.0730 ~ 1.0752
2017/02/10	1.0654	1.0668	1.0608	1.0637	60p	陽線引け	1.0668	1.0608	1.0652	1.0592	1.0652	1.0592	1.0547	1.0578	1.0607	1.0638	1.0667	1.0697	1.0727	1.0664	Bear			1.0555 ~ 1.0578	1.0600 ~ 1.0608	1.0638	1.0667 ~ 1.0675	1.0697 ~ 1.0720
週足	Open	High	Low	Close	値幅/週	引け形態	真の高値	真の安値	予想高値	予想安値	予想高値	予想安値	LBP0P	S2	S1	PP	R1	R2	HBOP	3-days AVG	Support Zone 2	Support Zone 1	BP	Resistance Zone 1	Resistance Zone 2			
2017/01/16 ~ 2017/01/20	1.0623	1.0719	1.0580	1.0697	139p	陽線引け	-	-	-	-	-	-	1.0473	1.0526	1.0612	1.0665	1.0750	1.0804	1.0889				1.0474 ~ 1.0526	1.0579 ~ 1.0596	1.0665	1.0734 ~ 1.0751	1.0804 ~ 1.0857	
2017/01/23 ~ 2017/01/27	1.0704	1.0774	1.0658	1.0696	116p	陽線引け	1.0774	1.0658	1.0735	1.0541	1.0735	1.0619	1.0529	1.0593	1.0645	1.0709	1.0761	1.0825	1.0877				1.0549 ~ 1.0593	1.0638 ~ 1.0651	1.0709	1.0767 ~ 1.0781	1.0825 ~ 1.0870	
2017/01/30 ~ 2017/02/03	1.0714	1.0829	1.0621	1.0779	208p	陽線引け	1.0829	1.0621	1.0908	1.0700	1.0908	1.0700	1.0449	1.0535	1.0657	1.0743	1.0865	1.0951	1.1073	1.0706	Bull			1.0455 ~ 1.0535	1.0614 ~ 1.0639	1.0743	1.0847 ~ 1.0871	1.0951 ~ 1.1030
2017/02/06 ~ 2017/02/10	1.0785	1.0789	1.0608	1.0637	181p	陽線引け	1.0789	1.0608	1.0713	1.0532	1.0713	1.0532	1.0386	1.0497	1.0567	1.0678	1.0748	1.0858	1.0928	1.0710	Bear			1.0428 ~ 1.0497	1.0566 ~ 1.0587	1.0678	1.0768 ~ 1.0789	1.0858 ~ 1.0927

GBP/JPY										Demark						Pivot						Fibonacci Zone					
当日のOHLCLから計算される翌日の										TD Range Projection						TD pivot points											
日足	Open	High	Low	Close	値幅/日	引け形態	真の高値	真の安値	予想高値	予想安値	予想高値	予想安値	StopLoss	Support	Pivot	Resistance	StopLoss	3-days AVG	Support Zone 2	Support Zone 1	BP	Resistance Zone 1	Resistance Zone 2				
													LBP0P	S2	S1	PP	R1	R2	HBOP								
2017/02/06	140.47	140.76	139.22	139.41	154p	陰線引け	-	-	-	-	-	-	137.30	138.26	138.84	139.80	140.38	141.34	141.91				137.67 ~ 138.26	138.85 ~ 139.03	139.80	140.57 ~ 140.75	141.34 ~ 141.93
2017/02/07	139.40	140.64	138.55	140.49	209p	陽線引け	140.64	138.55	141.60	139.52	141.60	139.52	137.06	137.81	139.15	139.89	141.23	141.98	143.32				137.01 ~ 137.81	138.60 ~ 138.85	139.89	140.93 ~ 141.18	141.98 ~ 142.77
2017/02/08	140.49	140.68	139.81	140.24	87p	陽線引け	140.68	139.81	140.46	139.59	140.46	139.59	138.93	139.17	139.80	140.24	140										

# IMM扱い8通貨/ダウ/日経/金/オイル/主要クロス円の過去5日及び過去5週の4本値

AUDUSD 5					CADUSD 5					CHFUSD 5				
Date	Open	High	Low	Close	Date	Open	High	Low	Close	Date	Open	High	Low	Close
2017/02/10	0.7623	0.7689	0.7619	0.7675	2017/02/10	0.7612	0.7654	0.7600	0.7641	2017/02/10	0.9984	0.9990	0.9938	0.9972
2017/02/09	0.7641	0.7664	0.7611	0.7623	2017/02/09	0.7609	0.7637	0.7594	0.7612	2017/02/09	1.0052	1.0064	0.9981	0.9985
2017/02/08	0.7624	0.7665	0.7612	0.7640	2017/02/08	0.7585	0.7613	0.7576	0.7609	2017/02/08	1.0024	1.0070	1.0000	1.0052
2017/02/07	0.7658	0.7681	0.7608	0.7624	2017/02/07	0.7646	0.7648	0.7569	0.7585	2017/02/07	1.0093	1.0093	0.9993	1.0024
2017/02/06	0.7678	0.7681	0.7630	0.7656	2017/02/06	0.7677	0.7686	0.7613	0.7646	2017/02/06	1.0078	1.0097	1.0040	1.0092

CNYUSD 5					EURUSD 5					GBPUSD 5				
Date	Open	High	Low	Close	Date	Open	High	Low	Close	Date	Open	High	Low	Close
2017/02/10	0.1456	0.1458	0.1455	0.1456	2017/02/10	1.0654	1.0668	1.0608	1.0637	2017/02/10	1.2499	1.2522	1.2440	1.2486
2017/02/09	0.1461	0.1461	0.1459	0.1460	2017/02/09	1.0695	1.0710	1.0651	1.0654	2017/02/09	1.2539	1.2582	1.2491	1.2498
2017/02/08	0.1463	0.1463	0.1458	0.1460	2017/02/08	1.0681	1.0713	1.0641	1.0696	2017/02/08	1.2508	1.2550	1.2478	1.2539
2017/02/07	0.1471	0.1471	0.1462	0.1462	2017/02/07	1.0748	1.0749	1.0656	1.0681	2017/02/07	1.2469	1.2546	1.2348	1.2508
2017/02/06	0.1471	0.1471	0.1468	0.1469	2017/02/06	1.0785	1.0789	1.0706	1.0748	2017/02/06	1.2479	1.2498	1.2428	1.2468

JPYUSD 5					MXNUSD 5					NZDUSD 5				
Date	Open	High	Low	Close	Date	Open	High	Low	Close	Date	Open	High	Low	Close
2017/02/10	0.8827	0.8861	0.8783	0.8822	2017/02/10	0.0492	0.0494	0.0490	0.0492	2017/02/10	0.7182	0.7210	0.7174	0.7197
2017/02/09	0.8941	0.8941	0.8822	0.8825	2017/02/09	0.0488	0.0492	0.0487	0.0491	2017/02/09	0.7246	0.7255	0.7174	0.7182
2017/02/08	0.8904	0.8957	0.8885	0.8941	2017/02/08	0.0485	0.0489	0.0484	0.0488	2017/02/08	0.7296	0.7333	0.7246	0.7247
2017/02/07	0.8944	0.8960	0.8888	0.8904	2017/02/07	0.0483	0.0486	0.0482	0.0485	2017/02/07	0.7319	0.7376	0.7285	0.7296
2017/02/06	0.8884	0.8958	0.8867	0.8943	2017/02/06	0.0491	0.0492	0.0484	0.0486	2017/02/06	0.7310	0.7327	0.7285	0.7319

Nikkei 225 - Japonia (NIKKEI) 5						
Date	Open	High	Low	Close	(ドル建て終値)	出来高
2017/02/10	19216.74	19395.99	19193.57	19378.93	170.23	0 2242757900
2017/02/09	18942.04	18991.23	18874.91	18907.67	168.28	1304574208 1933514600
2017/02/08	18951.16	19009.24	18875.57	19007.60	169.18	1028537792 1641715100
2017/02/07	18844.12	18970.58	18805.32	18910.78	168.67	1061317888 1694486900
2017/02/06	19069.72	19075.57	18899.40	18976.71	168.35	1204599808 1797664000
週4本値	19069.72	19395.99	18805.32	19378.93	170.23	(N225銘柄計)【東証一部全体計】

XAUUSD 5					
Date	Open	High	Low	Close	Volume
2017/02/10	1228.68	1237.23	1221.77	1233.81	0
2017/02/09	1241.02	1244.51	1228.34	1230.91	0
2017/02/08	1233.75	1244.74	1230.29	1241.51	0
2017/02/07	1235.00	1235.82	1227.88	1233.75	0
2017/02/06	1219.90	1235.72	1219.40	1235.45	0
週4本値	1219.90	1244.74	1219.40	1233.81	

Dow Jones Industrial - USA (DJIA) 5					
Date	Open	High	Low	Close	出来高
2017/02/10	20211.23	20298.21	20204.76	20269.37	312233293
2017/02/09	20061.73	20206.36	20061.73	20172.40	325309253
2017/02/08	20049.29	20068.28	20015.33	20054.34	280406499
2017/02/07	20107.62	20155.35	20068.68	20090.29	279669308
2017/02/06	20025.61	20094.95	20002.81	20052.42	281716573
週4本値	20025.61	20298.21	20002.81	20269.37	312233293

Historical Data by **Stooq**  
 Historical Data by **MarketNewsline** (ダウと日経)  
 Arrangement by **FX\_勝てば官軍?**

Crude Light Oil 5						
Date	Open	High	Low	Close	Volume	
2017/02/10	53.13	54.13	52.92	53.87	0	
2017/02/09	52.43	53.21	52.43	53.13	0	
2017/02/08	51.45	52.63	51.23	52.38	0	
2017/02/07	53.14	53.24	51.65	51.69	1241541	
2017/02/06	53.83	54.12	52.92	53.09	760275	
週4本値	53.83	54.13	51.23	53.87		

USDJPY 5					EURJPY 5					GBPJPY 5				
日付	始値	高値	安値	終値	日付	始値	高値	安値	終値	日付	始値	高値	安値	終値
2017/02/10	113.31	113.86	112.86	113.36	2017/02/10	120.70	121.34	120.23	120.58	2017/02/10	141.58	142.38	141.03	141.54
2017/02/09	111.85	113.35	111.84	113.32	2017/02/09	119.63	120.79	119.62	120.73	2017/02/09	140.25	141.81	140.14	141.62
2017/02/08	112.32	112.55	111.64	111.85	2017/02/08	119.96	120.10	119.33	119.63	2017/02/08	140.49	140.68	139.81	140.24
2017/02/07	111.80	112.51	111.60	112.32	2017/02/07	120.17	120.20	119.55	119.96	2017/02/07	139.40	140.64	138.55	140.49
2017/02/06	112.56	112.77	111.63	111.82	2017/02/06	121.40	121.50	119.96	120.18	2017/02/06	140.47	140.76	139.22	139.41

USDJPY Weekly 28					EURJPY Weekly 28					GBPJPY Weekly 28				
日付	始値	高値	安値	終値	日付	始値	高値	安値	終値	日付	始値	高値	安値	終値
2017/02/10	112.56	113.86	111.60	113.36	2017/02/10	121.40	121.50	119.33	120.58	2017/02/10	140.47	142.38	138.55	141.54
2017/02/03	114.89	114.96	112.06	112.69	2017/02/03	123.10	123.12	121.02	121.47	2017/02/03	144.38	144.62	140.39	140.66
2017/01/27	114.39	115.38	112.53	115.13	2017/01/27	122.44	123.31	121.14	123.15	2017/01/27	141.61	144.79	140.77	144.53
2017/01/20	114.42	115.62	112.58	114.50	2017/01/20	121.55	122.95	120.55	122.47	2017/01/20	137.83	142.17	136.48	141.53
2017/01/13	117.14	117.53	113.77	114.55	2017/01/13	123.39	123.73	121.20	121.86	2017/01/13	143.55	143.86	138.93	139.61



# 先週のIMM取り扱い対ドル8通貨チャート

※ 赤点線は週最高値/青天線は週最低値、BB中心線はSMA21

2017/02/06 ~ 2017/02/10

Chart by OANDA Japan MetaTrader4

