

JAPANESE YEN - CHICAGO MERCANTILE EXCHANGE
2016/08/23 ~ 2017/02/14

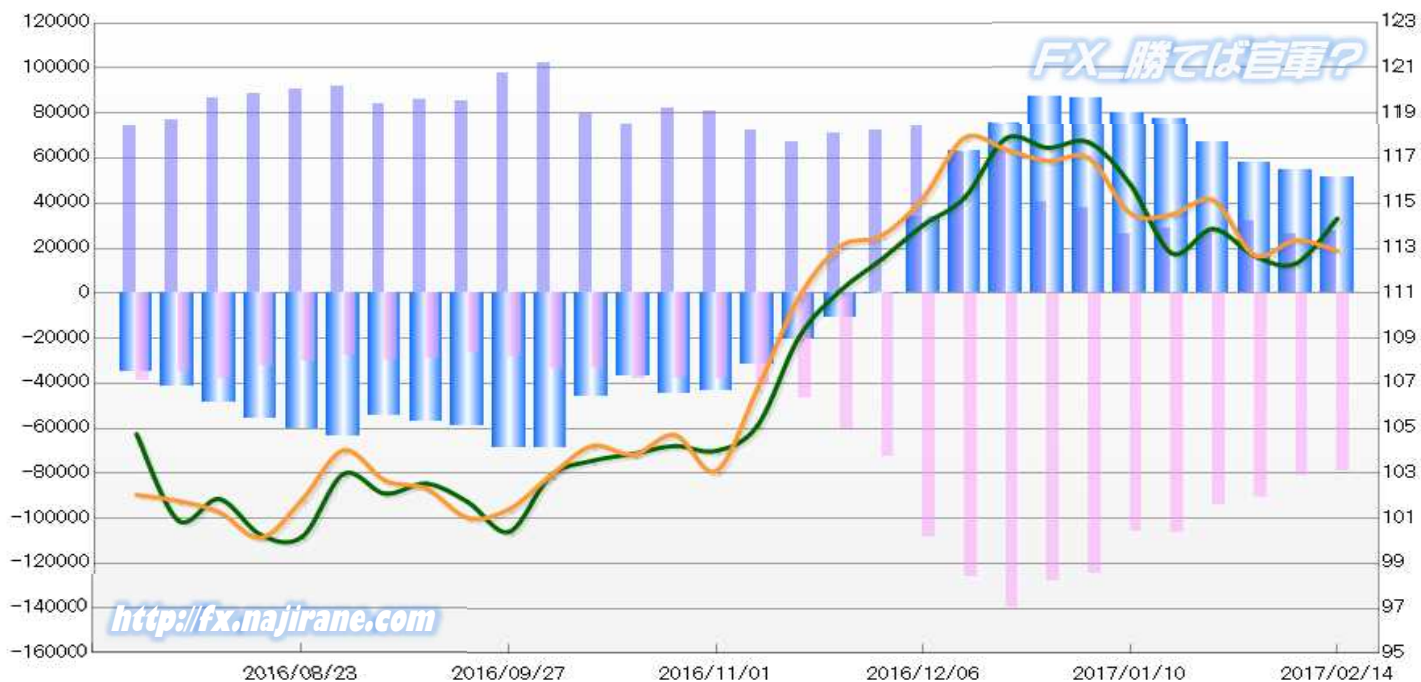
Code-097741

2017/02/17 NYクローズ時公表値

Report_Date	Non Commercial Positions												火曜日 引け値	金曜日 引け値
	Long	増減	増減(%)	Short	増減	増減(%)	売り越し	増減	増減(%)	売買計	増減	増減(%)		
2017/02/14	27701	1827	7.1%	78985	-1949	-2.4%	51284	-3776	-6.9%	106686	-122	-0.1%	114.32	112.89
2017/02/07	25874	-6342	-19.7%	80934	-9613	-10.6%	55060	-3271	-5.6%	106808	-15955	-13.0%	112.32	113.36
2017/01/31	32216	5089	18.8%	90547	-3420	-3.6%	58331	-8509	-12.7%	122763	1669	1.4%	112.67	112.69
2017/01/24	27127	-1433	-5.0%	93967	-12423	-11.7%	66840	-10990	-14.1%	121094	-13856	-10.3%	113.86	115.13
2017/01/17	28560	2519	9.7%	106390	510	0.5%	77830	-2009	-2.5%	134950	3029	2.3%	112.78	114.50
2017/01/10	26041	-11921	-31.4%	105880	-18846	-15.1%	79839	-6925	-8.0%	131921	-30767	-18.9%	115.83	114.55
2017/01/03	37962	-2603	-6.4%	124726	-2848	-2.2%	86764	-245	-0.3%	162688	-5451	-3.2%	117.70	117.00
2016/12/27	40565	-23635	-36.8%	127574	-12075	-8.6%	87009	11560	15.3%	168139	-35710	-17.5%	117.46	116.88
2016/12/20	64200	1768	2.8%	139649	13788	11.0%	75449	12020	19.0%	203849	15556	8.3%	117.88	117.38
2016/12/13	62432	-11935	-16.0%	125861	17557	16.2%	63429	29492	86.9%	188293	5622	3.1%	115.25	117.91
2016/12/06	74367	2243	3.1%	108304	35911	49.6%	33937	33668	12516.0%	182671	38154	26.4%	114.03	115.25
2016/11/29	72124	941	1.3%	72393	12110	20.1%	269	-11169	-102.5%	144517	13051	9.9%	112.52	113.56
2016/11/22	71183	4098	6.1%	60283	13874	29.9%	-10900	-9776	-47.3%	131466	17972	15.8%	111.12	113.09
2016/11/15	67085	-5534	-7.6%	46409	5746	14.1%	-20676	-11280	-35.3%	113494	212	0.2%	109.05	110.82
2016/11/08	72619	-8391	-10.4%	40663	2813	7.4%	-31956	-11204	-26.0%	113282	-5578	-4.7%	105.13	106.78
2016/11/01	81010	-1375	-1.7%	37850	60	0.2%	-43160	-1435	-3.2%	118860	-1315	-1.1%	104.00	103.11
2016/10/25	82385	7419	9.9%	37790	-185	-0.5%	-44595	7604	20.6%	120175	7234	6.4%	104.22	104.71
2016/10/18	74966	-4313	-5.4%	37975	4605	13.8%	-36991	-8918	-19.4%	112941	292	0.3%	103.87	103.83
2016/10/11	79279	-22707	-22.3%	33370	79	0.2%	-45909	-22786	-33.2%	112649	-22628	-16.7%	103.56	104.22
2016/10/04	101986	4554	4.7%	33291	4751	16.6%	-68695	-197	-0.3%	135277	9305	7.4%	102.90	102.91
2016/09/27	97432	12315	14.5%	28540	2208	8.4%	-68892	10107	17.2%	125972	14523	13.0%	100.41	101.41
2016/09/20	85117	-1023	-1.2%	26332	-2962	-10.1%	-58785	1939	3.4%	111449	-3985	-3.5%	101.73	101.03
2016/09/13	86140	2172	2.6%	29294	-185	-0.6%	-56846	2357	4.3%	115434	1987	1.8%	102.55	102.32
2016/09/06	83968	-7602	-8.3%	29479	1570	5.6%	-54489	-9172	-14.4%	113447	-6032	-5.0%	102.10	102.68
2016/08/30	91570	1183	1.3%	27909	-2162	-7.2%	-63661	3345	5.5%	119479	-979	-0.8%	102.98	104.03
2016/08/23	90387			30071			-60316			120458			100.19	101.84

JAPANESE YEN - CHICAGO MERCANTILE EXCHANGE
FUTURES ONLY POSITIONS

— 金曜終値 — 火曜終値 — Short枚数 — Long枚数 — 売り越し枚数(マイナスの場合は買越しと読替え)



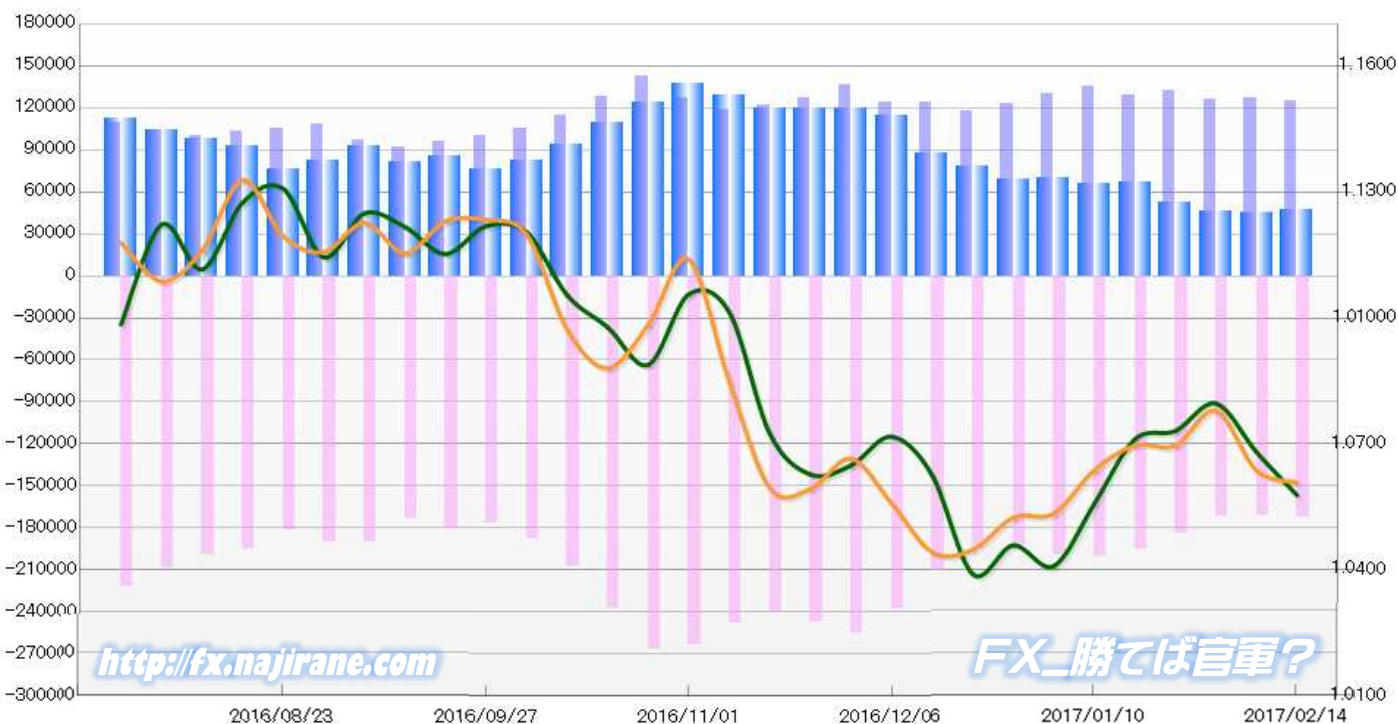
EURO FX - CHICAGO MERCANTILE EXCHANGE
2016/08/23 ~ 2017/02/14

Code-099741
2017/02/17 NYクローズ時公表値

Report_Date	Non Commercial Positions											火曜日 引け値	金曜日 引け値	
	Long	増減		Short	増減		売り越し	増減		売買計	増減			
2017/02/14	125333	-1375	-1.1%	172097	438	0.3%	46764	1813	4.0%	297430	-937	-0.3%	1.0578	1.0608
2017/02/07	126708	1019	0.8%	171659	257	0.1%	44951	-762	-1.7%	298367	1276	0.4%	1.0681	1.0637
2017/01/31	125689	-6215	-4.7%	171402	-12850	-7.0%	45713	-6635	-12.7%	297091	-19065	-6.0%	1.0796	1.0779
2017/01/24	131904	3058	2.4%	184252	-11094	-5.7%	52348	-14152	-21.3%	316156	-8036	-2.5%	1.0731	1.0696
2017/01/17	128846	-5901	-4.4%	195346	-5224	-2.6%	66500	677	1.0%	324192	-11125	-3.3%	1.0711	1.0697
2017/01/10	134747	5046	3.9%	200570	813	0.4%	65823	-4233	-6.0%	335317	5859	1.8%	1.0558	1.0638
2017/01/03	129701	6420	5.2%	199757	7068	3.7%	70056	648	0.9%	329458	13488	4.3%	1.0410	1.0535
2016/12/27	123281	5821	5.0%	192689	-2816	-1.4%	69408	-8637	-11.1%	315970	3005	1.0%	1.0459	1.0525
2016/12/20	117460	-6137	-5.0%	195505	-15605	-7.4%	78045	-9468	-10.8%	312965	-21742	-6.5%	1.0390	1.0448
2016/12/13	123597	207	0.2%	211110	-26836	-11.3%	87513	-27043	-23.6%	334707	-26629	-7.4%	1.0626	1.0443
2016/12/06	123390	-12718	-9.3%	237946	-17402	-6.8%	114556	-4684	-3.9%	361336	-30120	-7.7%	1.0718	1.0559
2016/11/29	136108	8986	7.1%	255348	8878	3.6%	119240	-108	-0.1%	391456	17864	4.8%	1.0649	1.0665
2016/11/22	127122	5547	4.6%	246470	5713	2.4%	119348	166	0.1%	373592	11260	3.1%	1.0628	1.0593
2016/11/15	121575	2678	2.3%	240757	-7454	-3.0%	119182	-10132	-7.8%	362332	-4776	-1.3%	1.0724	1.0595
2016/11/08	118897	-7546	-6.0%	248211	-15617	-5.9%	129314	-8071	-5.9%	367108	-23163	-5.9%	1.1013	1.0847
2016/11/01	126443	-16438	-11.5%	263828	-2909	-1.1%	137385	13529	10.9%	390271	-19347	-4.7%	1.1056	1.1139
2016/10/25	142881	14700	11.5%	266737	29288	12.3%	123856	14588	13.4%	409618	43988	12.0%	1.0889	1.0984
2016/10/18	128181	13897	12.2%	237449	29693	14.3%	109268	15796	16.9%	365630	43590	13.5%	1.0978	1.0880
2016/10/11	114284	8650	8.2%	207756	20063	10.7%	93472	11413	13.9%	322040	28713	9.8%	1.1054	1.0972
2016/10/04	105634	5142	5.1%	187693	11171	6.3%	82059	6029	7.9%	293327	16313	5.9%	1.1204	1.1199
2016/09/27	100492	4794	5.0%	176522	-4201	-2.3%	76030	-8995	-10.6%	277014	593	0.2%	1.1219	1.1233
2016/09/20	95698	3915	4.3%	180723	7465	4.3%	85025	3550	4.4%	276421	11380	4.3%	1.1152	1.1230
2016/09/13	91783	-5541	-5.7%	173258	-16696	-8.8%	81475	-11155	-12.0%	265041	-22237	-7.7%	1.1217	1.1154
2016/09/06	97324	-10937	-10.1%	189954	-232	-0.1%	92630	10705	13.1%	287278	-11169	-3.7%	1.1249	1.1226
2016/08/30	108261	2887	2.7%	190186	8154	4.5%	81925	5267	6.9%	298447	11041	3.8%	1.1144	1.1157
2016/08/23	105374			182032			76658			287406			1.1308	1.1195

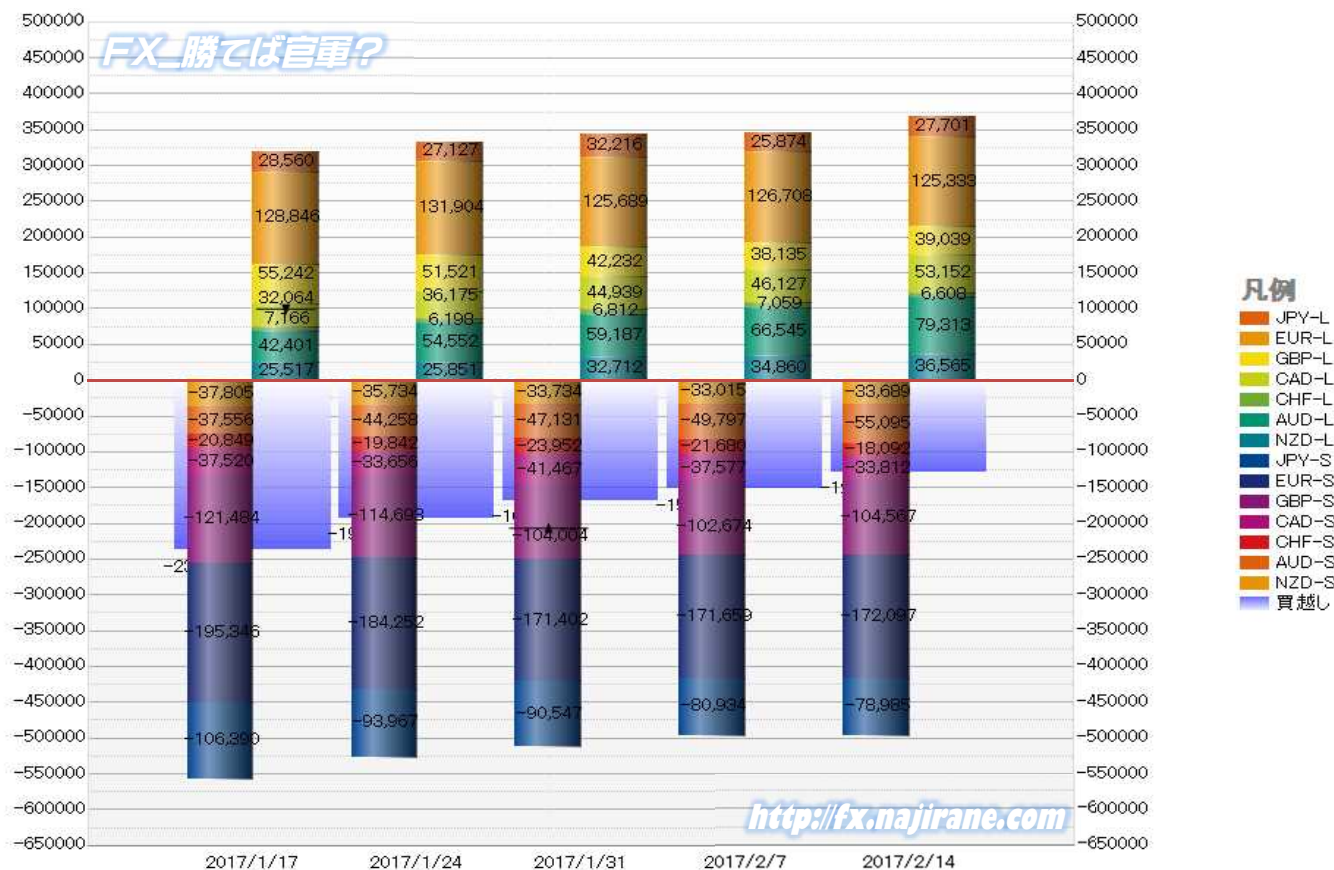
EURO FX - CHICAGO MERCANTILE EXCHANGE
FUTURES ONLY POSITIONS

— 金曜締め週終値 — 火曜締め週終値 — Short枚数 — Long枚数 — 売り越し枚数(マイナスの場合は買越しと読替え)



	2017/01/17			2017/01/24			2017/01/31			2017/02/07			2017/02/14		
	Long	Short	売り越し	Long	Short	売り越し	Long	Short	売り越し	Long	Short	売り越し	Long	Short	売り越し
JPY	28560	106390	77830	27127	93967	66840	32216	90547	58331	25874	80934	55060	27701	78985	51284
	前週比 枚数増減 (枚)			-1433	-12423	-10990	5089	-3420	-8509	-6342	-9613	-3271	1827	-1949	-3776
	前週比 枚数増減 (%)			-5.02%	-11.68%	-14.12%	18.76%	-3.64%	-12.73%	-19.69%	-10.62%	-5.61%	7.06%	-2.41%	-6.86%
EUR	128846	195346	66500	131904	184252	52348	125689	171402	45713	126708	171659	44951	125333	172097	46764
	前週比 枚数増減 (枚)			3058	-11094	-14152	-6215	-12850	-6635	1019	257	-762	-1375	438	1813
	前週比 枚数増減 (%)			2.37%	-5.68%	-21.28%	-4.71%	-6.97%	-12.67%	0.81%	0.15%	-1.67%	-1.09%	0.26%	4.03%
GBP	55242	121484	66242	51521	114693	63172	42232	104004	61772	38135	102674	64539	39039	104567	65528
	前週比 枚数増減 (枚)			-3721	-6791	-3070	-9289	-10689	-1400	-4097	-1330	2767	904	1893	989
	前週比 枚数増減 (%)			-6.74%	-5.59%	-4.63%	-18.03%	-9.32%	-2.22%	-9.70%	-1.28%	4.48%	2.37%	1.84%	1.53%
AUD	42401	37556	-4845	54552	44258	-10294	59187	47131	-12056	66545	49797	-16748	79313	55095	-24218
	前週比 枚数増減 (枚)			12151	6702	5449	4635	2873	1762	7358	2666	4692	12768	5298	7470
	前週比 枚数増減 (%)			28.66%	17.85%	112.47%	8.50%	6.49%	17.12%	12.43%	5.66%	38.92%	19.19%	10.64%	44.60%
CAD	32064	37520	5456	36175	33656	-2519	44939	41467	-3472	46127	37577	-8550	53152	33812	-19340
	前週比 枚数増減 (枚)			4111	-3864	-2937	8764	7811	953	1188	-3890	5078	7025	-3765	10790
	前週比 枚数増減 (%)			12.82%	-10.30%	-146.17%	24.23%	23.21%	37.83%	2.64%	-9.38%	146.26%	15.23%	-10.02%	126.20%
CHF	7166	20849	13683	6198	19842	13644	6812	23952	17140	7059	21680	14621	6608	18092	11484
	前週比 枚数増減 (枚)			-968	-1007	-39	614	4110	3496	247	-2272	-2519	-451	-3588	-3137
	前週比 枚数増減 (%)			-13.51%	-4.83%	-0.29%	9.91%	20.71%	25.62%	3.63%	-9.49%	-14.70%	-6.39%	-16.55%	-21.46%
NZD	25517	37805	12288	25851	35734	9883	32712	33734	1022	34860	33015	-1845	36565	33689	-2876
	前週比 枚数増減 (枚)			334	-2071	-2405	6861	-2000	-8861	2148	-719	823	1705	674	1031
	前週比 枚数増減 (%)			1.31%	-5.48%	-19.57%	26.54%	-5.60%	-89.66%	6.57%	-2.13%	-280.53%	4.89%	2.04%	55.88%
MXN	22573	95894	73321	32133	96787	64654	26000	89208	63208	31229	89717	58488	30271	90484	60213
	前週比 枚数増減 (枚)			9560	893	-8667	-6133	-7579	-1446	5229	509	-4720	-958	767	1725
	前週比 枚数増減 (%)			42.35%	0.93%	-11.82%	-19.09%	-7.83%	-2.24%	20.11%	0.57%	-7.47%	-3.07%	0.85%	2.95%
Total All 8	342369	652844	310475	365461	623189	257728	369787	601445	231658	376537	587053	210516	397982	586821	188839
	前週比 枚数増減 (枚)			23092	-29655	-52747	4326	-21744	-26070	6750	-14392	-21142	21445	-232	-21677
	前週比 枚数増減 (%)			6.74%	-4.54%	-16.99%	1.18%	-3.49%	-10.12%	1.83%	-2.39%	-9.13%	5.70%	-0.04%	-10.30%
Total 7 (MXN除)	319796	556950	237154	333328	526402	193074	343787	512237	168450	345308	497336	152028	367711	496337	128626
	前週比 枚数増減 (枚)			13532	-30548	-44080	10459	-14165	-24624	1521	-14901	-16422	22403	-999	-23402
	前週比 枚数増減 (%)			4.2%	-5.5%	-18.6%	3.1%	-2.7%	-12.8%	0.4%	-2.9%	-9.7%	6.5%	-0.2%	-15.4%

直近5週 CFTC IMM主要7通貨の構成

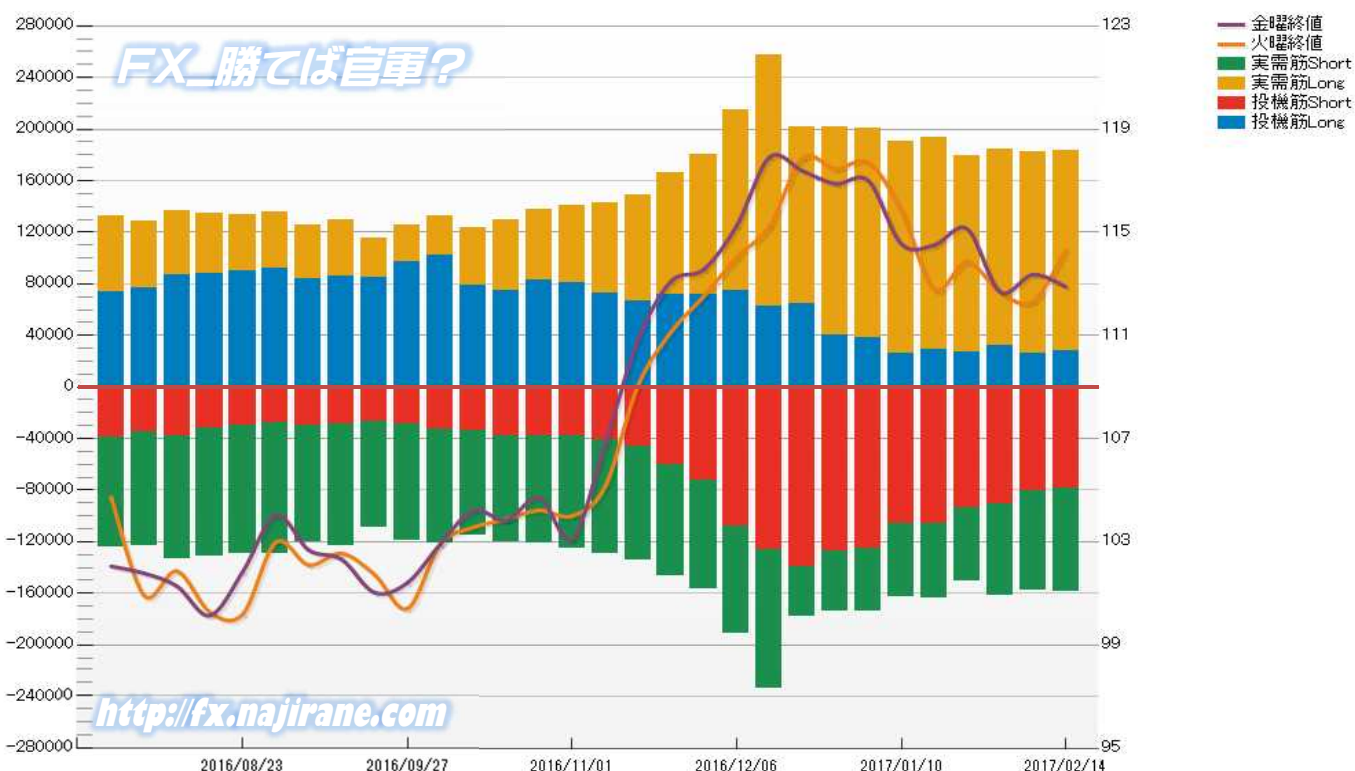


JAPANESE YEN - CHICAGO MERCANTILE EXCHANGE
FUTURES ONLY POSITIONS

Code-097741
2017/02/17 公表値

Date	投機筋集計				実需筋集計				投機筋+実需筋合計				ドル円終値	
	円買い	円売り	売り越し	売買計	円買い	円売り	売り越し	売買計	円買い	円売り	売り越し	売買計	火曜締め	金曜締め
2017/02/14	27701	78985	51284	106686	155557	80051	-75506	235608	183258	159036	-24222	342294	114.32	112.89
2017/02/07	25874	80934	55060	106808	156236	77214	-79022	233450	182110	158148	-23962	340258	112.32	113.36
2017/01/31	32216	90547	58331	122763	152598	71166	-81432	223764	184814	161713	-23101	346527	112.67	112.69
2017/01/24	27127	93967	66840	121094	152556	56703	-95853	209259	179683	150670	-29013	330353	113.86	115.13
2017/01/17	28560	106390	77830	134950	164514	57301	-107213	221815	193074	163691	-29383	356765	112.78	114.50
2017/01/10	26041	105880	79839	131921	164249	56661	-107588	220910	190290	162541	-27749	352831	115.83	114.55
2017/01/03	37962	124726	86764	162688	162764	48801	-113963	211565	200726	173527	-27199	374253	117.70	117.00
2016/12/27	40565	127574	87009	168139	160533	46704	-113829	207237	201098	174278	-26820	375376	117.46	116.88
2016/12/20	64200	139649	75449	203849	137201	37978	-99223	175179	201401	177627	-23774	379028	117.88	117.38
2016/12/13	62432	125861	63429	188293	194893	107464	-87429	302357	257325	233325	-24000	490650	115.25	117.91
2016/12/06	74367	108304	33937	182671	140357	83264	-57093	223621	214724	191568	-23156	406292	114.03	115.25
2016/11/29	72124	72393	269	144517	108163	83995	-24168	192158	180287	156388	-23899	336675	112.52	113.56
2016/11/22	71183	60283	-10900	131466	95166	86202	-8964	181368	166349	146485	-19864	312834	111.12	113.09
2016/11/15	67085	46409	-20676	113494	81503	88408	6905	169911	148588	134817	-13771	283405	109.05	110.82
2016/11/08	72619	40663	-31956	113282	69838	88139	18301	157977	142457	128802	-13655	271259	105.13	106.78
2016/11/01	81010	37850	-43160	118860	59272	87511	28239	146783	140282	125361	-14921	265643	104.00	103.11
2016/10/25	82385	37790	-44595	120175	55555	83712	28157	139267	137940	121502	-16438	259442	104.22	104.71
2016/10/18	74966	37975	-36991	112941	54359	81884	27525	136243	129325	119859	-9466	249184	103.87	103.83
2016/10/11	79279	33370	-45909	112649	43806	81544	37738	125350	123085	114914	-8171	237999	103.56	104.22
2016/10/04	101986	33291	-68695	135277	30627	87820	57193	118447	132613	121111	-11502	253724	102.90	102.91
2016/09/27	97432	28540	-68892	125972	28326	90589	62263	118915	125758	119129	-6629	244887	100.41	101.41
2016/09/20	85117	26332	-58785	111449	29715	83021	53306	112736	114832	109353	-5479	224185	101.73	101.03
2016/09/13	86140	29294	-56846	115434	43492	93700	50208	137192	129632	122994	-6638	252626	102.55	102.32
2016/09/06	83968	29479	-54489	113447	41120	91024	49904	132144	125088	120503	-4585	245591	102.10	102.68
2016/08/30	91570	27909	-63661	119479	44366	101570	57204	145936	135936	129479	-6457	265415	102.98	104.03
2016/08/23	90387	30071	-60316	120458	43245	99482	56237	142727	133632	129553	-4079	263185	100.19	101.84
2016/08/16	88273	32267	-56006	120540	46280	99196	52916	145476	134553	131463	-3090	266016	100.27	100.14
2016/08/09	86719	37888	-48831	124607	49619	95343	45724	144962	136338	133231	-3107	269569	101.86	101.28
2016/08/02	76575	34875	-41700	111450	51707	88074	36367	139781	128282	122949	-5333	251231	100.92	101.78
2016/07/26	74074	39116	-34958	113190	58947	85458	26511	144405	133021	124574	-8447	257595	104.74	102.05

JAPANESE YEN - CHICAGO MERCANTILE EXCHANGE
FUTURES ONLY POSITIONS Code-097741

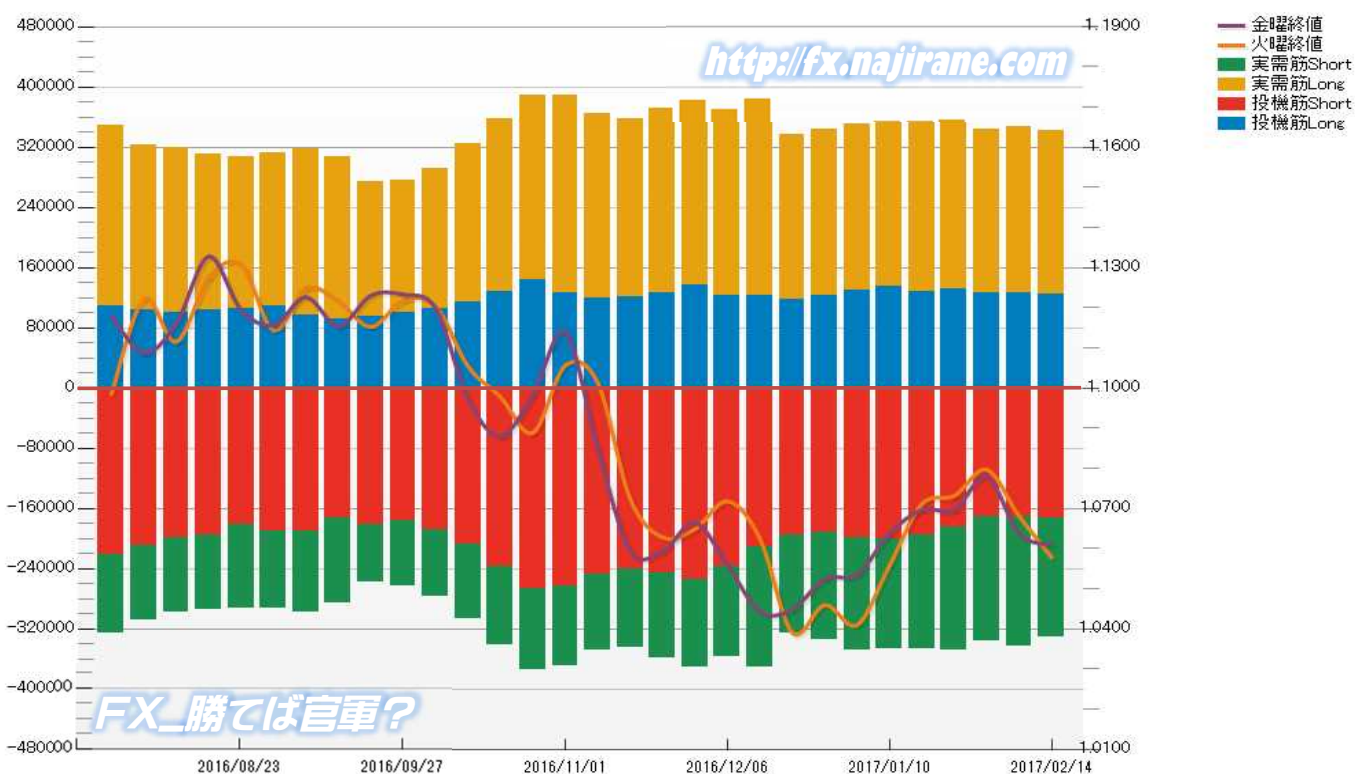


EURO FX - CHICAGO MERCANTILE EXCHANGE
FUTURES ONLY POSITIONS

Code-099741
2017/02/17 公表値

Date	投机筋集計				実需筋集計				投机筋+実需筋合計				ユーロドル終値	
	EUR買い	EUR売り	売り越し	売買計	EUR買い	EUR売り	売り越し	売買計	EUR買い	EUR売り	売り越し	売買計	火曜締め	金曜締め
2017/02/14	125333	172097	46764	297430	216770	159331	-57439	376101	342103	331428	-10675	673531	1.0578	1.0608
2017/02/07	126708	171659	44951	298367	220490	171635	-48855	392125	347198	343294	-3904	690492	1.0681	1.0637
2017/01/31	125689	171402	45713	297091	218274	164996	-53278	383270	343963	336398	-7565	680361	1.0796	1.0779
2017/01/24	131904	184252	52348	316156	224017	163750	-60267	387767	355921	348002	-7919	703923	1.0731	1.0696
2017/01/17	128846	195346	66500	324192	225333	150756	-74577	376089	354179	346102	-8077	700281	1.0711	1.0697
2017/01/10	134747	200570	65823	335317	219984	147154	-72830	367138	354731	347724	-7007	702455	1.0558	1.0638
2017/01/03	129701	199757	70056	329458	221781	148076	-73705	369857	351482	347833	-3649	699315	1.0410	1.0535
2016/12/27	123281	192689	69408	315970	220288	141332	-78956	361620	343569	334021	-9548	677590	1.0459	1.0525
2016/12/20	117460	195505	78045	312965	219648	130749	-88899	350397	337108	326254	-10854	663362	1.0390	1.0448
2016/12/13	123597	211110	87513	334707	259537	160236	-99301	419773	383134	371346	-11788	754480	1.0626	1.0443
2016/12/06	123390	237946	114556	361336	246681	120065	-126616	366746	370071	358011	-12060	728082	1.0718	1.0559
2016/11/29	136108	255348	119240	391456	245355	116561	-128794	361916	381463	371909	-9554	753372	1.0649	1.0665
2016/11/22	127122	246470	119348	373592	243796	111726	-132070	355522	370918	358196	-12722	729114	1.0628	1.0593
2016/11/15	121575	240757	119182	362332	235596	104624	-130972	340220	357171	345381	-11790	702552	1.0724	1.0595
2016/11/08	118897	248211	129314	367108	245616	101035	-144581	346651	364513	349246	-15267	713759	1.1013	1.0847
2016/11/01	126443	263828	137385	390271	261922	105533	-156389	367455	388365	369361	-19004	757726	1.1056	1.1139
2016/10/25	142881	266737	123856	409618	246230	108147	-138083	354377	389111	374884	-14227	763995	1.0889	1.0984
2016/10/18	128181	237449	109268	365630	230197	104790	-125407	334987	358378	342239	-16139	700617	1.0978	1.0880
2016/10/11	114284	207756	93472	322040	209879	99131	-110748	309010	324163	306887	-17276	631050	1.1054	1.0972
2016/10/04	105634	187693	82059	293327	186827	89483	-97344	276310	292461	277176	-15285	569637	1.1204	1.1199
2016/09/27	100492	176522	76030	277014	174828	86986	-87842	261814	275320	263508	-11812	538828	1.1219	1.1233
2016/09/20	95698	180723	85025	276421	177910	77967	-99943	255877	273608	258690	-14918	532298	1.1152	1.1230
2016/09/13	91783	173258	81475	265041	216048	112825	-103223	328873	307831	286083	-21748	593914	1.1217	1.1154
2016/09/06	97324	189954	92630	287278	220781	107441	-113340	328222	318105	297395	-20710	615500	1.1249	1.1226
2016/08/30	108261	190186	81925	298447	204241	103433	-100808	307674	312502	293619	-18883	606121	1.1144	1.1157
2016/08/23	105374	182032	76658	287406	202180	111006	-91174	313186	307554	293038	-14516	600592	1.1308	1.1195
2016/08/16	103060	195568	92508	298628	208203	99798	-108405	308001	311263	295366	-15897	606629	1.1275	1.1328
2016/08/09	100442	198841	98399	299283	218984	99470	-119514	318454	319426	298311	-21115	617737	1.1115	1.1161
2016/08/02	104516	208619	104103	313135	218778	99452	-119326	318230	323294	308071	-15223	631365	1.1222	1.1087
2016/07/26	109193	221793	112600	330986	239073	103338	-135735	342411	348266	325131	-23135	673397	1.0985	1.1179

EURO FX - CHICAGO MERCANTILE EXCHANGE
FUTURES ONLY POSITIONS Code-099741



CME Daily Volume

シカゴ・マーカントイル取引所 取扱高日次データ

FX_勝てば官軍?

<http://fx.najirane.com>

EU Euro	取扱高			当日含む前5営業日計			参考レート	
	CALL	PUT	FUTURE	CALL	PUT	FUTURE	Open	Close
2017/2/16 (木)	4304	6600	208753	31209	32513	940707	1.0592	1.0669
2017/2/15 (水)	5871	3915	211898	32985	33019	897962	1.0578	1.0593
2017/2/14 (火)	5612	7292	203533	34564	33458	872369	1.0596	1.0578
2017/2/13 (月)	6803	5367	138977	32230	29921	844661	1.0632	1.0596
2017/2/10 (金)	8619	9339	177546	31327	30234	857463	1.0654	1.0637
2017/2/9 (木)	6080	7106	166008	31223	28301	886979	1.0695	1.0654
2017/2/8 (水)	7450	4354	186305	31759	27943	912951	1.0681	1.0696
2017/2/7 (火)	3278	3755	175825	30138	29533	940874	1.0748	1.0681
2017/2/6 (月)	5900	5680	151779	42216	37095	1058347	1.0785	1.0748
2017/2/3 (金)	8515	7406	207062	39297	37765	1111023	1.0761	1.0779

AUS Dollar	取扱高			当日含む前5営業日計			参考レート	
	CALL	PUT	FUTURE	CALL	PUT	FUTURE	Open	Close
2017/2/16 (木)	574	1183	85371	3915	5062	403607	0.7711	0.7693
2017/2/15 (水)	988	984	95959	4270	4597	398379	0.7673	0.7711
2017/2/14 (火)	695	657	89082	3680	4153	369167	0.7640	0.7673
2017/2/13 (月)	454	1424	56963	3906	5046	362388	0.7665	0.7640
2017/2/10 (金)	1204	814	76232	5036	4740	369087	0.7623	0.7675
2017/2/9 (木)	929	718	80143	5752	6816	390937	0.7641	0.7623
2017/2/8 (水)	398	540	66747	8837	8847	412823	0.7624	0.7640
2017/2/7 (火)	921	1550	82303	8808	9482	422684	0.7658	0.7624
2017/2/6 (月)	1584	1118	63662	9090	10111	436905	0.7678	0.7656
2017/2/3 (金)	1920	2890	98082	7707	9289	433506	0.7658	0.7683

CHE Franc	取扱高			当日含む前5営業日計			参考レート	
	CALL	PUT	FUTURE	CALL	PUT	FUTURE	Open	Close
2017/2/16 (木)	3	0	46	122	0	103	0.9942	1.0026
2017/2/15 (水)	48	0	0	206	0	83	0.9937	0.9942
2017/2/14 (火)	47	0	17	328	0	84	0.9941	0.9937
2017/2/13 (月)	14	0	23	320	0	92	0.9965	0.9942
2017/2/10 (金)	10	0	17	540	0	72	0.9984	0.9972
2017/2/9 (木)	87	0	26	536	0	60	1.0052	0.9985
2017/2/8 (水)	170	0	1	454	0	39	1.0024	1.0052
2017/2/7 (火)	39	0	25	410	0	39	1.0093	1.0024
2017/2/6 (月)	234	0	3	441	0	42	1.0078	1.0092
2017/2/3 (金)	6	0	5	731	0	43	1.0075	1.0074

JPN Yen	取扱高			当日含む前5営業日計			参考レート	
	CALL	PUT	FUTURE	CALL	PUT	FUTURE	Open	Close
2017/2/16 (木)	5591	2984	135905	15939	14466	690295	114.31	113.28
2017/2/15 (水)	2531	3519	143175	15604	19696	706138	114.32	114.31
2017/2/14 (火)	2071	2795	156102	15659	20146	692788	113.76	114.32
2017/2/13 (月)	2758	1460	104137	15620	21183	665037	113.65	113.77
2017/2/10 (金)	2988	3708	150976	17980	27969	702015	113.31	113.36
2017/2/9 (木)	5256	8214	151748	19249	31799	734354	111.85	113.32
2017/2/8 (水)	2586	3969	129825	19347	31633	755195	112.32	111.85
2017/2/7 (火)	2032	3832	128351	19651	29953	796816	111.80	112.32
2017/2/6 (月)	5118	8246	141115	22654	33387	929519	112.56	111.82
2017/2/3 (金)	4257	7538	183315	19057	27151	944554	112.87	112.69

CAN Dollar	取扱高			当日含む前5営業日計			参考レート	
	CALL	PUT	FUTURE	CALL	PUT	FUTURE	Open	Close
2017/2/16 (木)	370	896	59692	2479	2959	263485	0.7647	0.7651
2017/2/15 (水)	446	684	49784	2483	2353	255014	0.7648	0.7646
2017/2/14 (火)	1243	719	55541	2406	1950	246536	0.7650	0.7648
2017/2/13 (月)	225	320	39766	1613	1649	244234	0.7638	0.7650
2017/2/10 (金)	195	340	58702	1970	2075	263085	0.7612	0.7641
2017/2/9 (木)	374	290	51221	2499	2997	253381	0.7609	0.7612
2017/2/8 (水)	369	281	41306	2800	3820	256493	0.7585	0.7609
2017/2/7 (火)	450	418	53239	3101	4707	274161	0.7646	0.7585
2017/2/6 (月)	582	746	58617	3797	5325	301946	0.7678	0.7646
2017/2/3 (金)	724	1262	48998	3362	4940	289109	0.7676	0.7675

NZL Dollar	取扱高			当日含む前5営業日計			参考レート	
	CALL	PUT	FUTURE	CALL	PUT	FUTURE	Open	Close
2017/2/16 (木)	0	0	22229	0	0	97888	0.7214	0.7213
2017/2/15 (水)	0	0	19710	0	0	109518	0.7171	0.7214
2017/2/14 (火)	0	0	14543	0	0	118517	0.7176	0.7171
2017/2/13 (月)	0	0	21329	0	0	127109	0.7201	0.7176
2017/2/10 (金)	0	0	31707	0	0	130863	0.7182	0.7197
2017/2/9 (木)	0	0	31228	0	0	134038	0.7246	0.7182
2017/2/8 (水)	0	0	28302	0	0	127509	0.7296	0.7247
2017/2/7 (火)	0	0	18297	0	0	125936	0.7319	0.7296
2017/2/6 (月)	0	0	24504	0	0	127433	0.7310	0.7319
2017/2/3 (金)	0	0	25178	0	0	129570	0.7285	0.7315

MEX Peso	取扱高			当日含む前5営業日計			参考レート	
	CALL	PUT	FUTURE	CALL	PUT	FUTURE	Open	Close
2017/2/16 (木)	18	0	30926	120	70	155615	4.9166	4.9077
2017/2/15 (水)	21	70	37412	154	72	161468	4.9231	4.9368
2017/2/14 (火)	28	0	35264	158	3	150975	4.9416	4.9326
2017/2/13 (月)	31	0	22070	130	72	143462	4.9207	4.9267
2017/2/10 (金)	22	0	29943	116	73	153601	4.9215	4.9199
2017/2/9 (木)	52	2	36779	2626	116	171282	4.8792	4.9073
2017/2/8 (水)	25	1	26919	2956	123	178996	4.8477	4.8823
2017/2/7 (火)	0	69	27751	2950	144	181981	4.8297	4.8539
2017/2/6 (月)	17	1	32209	2973	188	190436	4.9080	4.8553
2017/2/3 (金)	2532	43	47624	3014	191	195559	4.8578	4.9085

過去5日及び過去4週の4本値と各種ピボット

2017/02/13 ~ 2017/02/17

USD/JPY										Demark						Pivot						Fibonacci Zone														
当日のOHLCLから計算される翌日の										TD Range Projection						TD pivot points																				
日足	Open	High	Low	Close	値幅/日	引け形態	真の高値	真の安値	予想高値	予想安値	予想高値	予想安値	StopLoss	Support			Resistance			StopLoss	3-days AVG		Support Zone 2		Support Zone 1		BP	Resistance Zone 1		Resistance Zone 2						
													LBOP	S2	S1	PP	R1	R2	HBOP																	
2017/02/13	113.65	114.17	113.46	113.77	71p	陽線引け	-	-	-	-	-	-	112.71	113.08	113.42	113.80	114.14	114.51	114.85					112.81	~	113.08	113.36	~	113.44	113.80	114.15	~	114.24	114.51	~	114.78
2017/02/14	113.76	114.50	113.26	114.32	125p	陽線引け	114.50	113.26	115.03	113.79	115.03	113.79	112.31	112.78	113.55	114.03	114.80	115.27	116.04					112.30	~	112.78	113.26	~	113.40	114.03	114.65	~	114.79	115.27	~	115.75
2017/02/15	114.32	114.96	113.88	114.31	107p	陽線引け	114.96	113.88	114.63	113.56	114.63	113.56	112.74	113.31	113.81	114.38	114.88	115.46	115.96	114.07	Bull			112.90	~	113.31	113.72	~	113.85	114.38	114.92	~	115.05	115.46	~	115.87
2017/02/16	114.31	114.31	113.10	113.28	121p	陰線引け	114.31	113.10	113.79	112.58	113.79	112.58	111.60	112.35	112.81	113.56	114.02	114.77	115.23	113.99	Bear			111.89	~	112.35	112.81	~	112.95	113.56	114.16	~	114.31	114.77	~	115.23
2017/02/17	113.29	113.50	112.62	112.89	88p	陰線引け	113.50	112.62	113.20	112.32	113.20	112.32	111.63	112.12	112.51	113.00	113.39	113.88	114.27	113.65	Bear			111.79	~	112.12	112.46	~	112.56	113.00	113.44	~	113.55	113.88	~	114.22
2017/01/23 ~ 2017/01/27	114.39	115.38	112.53	115.13	285p	陽線引け	-	-	-	-	-	-	110.47	111.50	113.31	114.34	116.16	117.19	119.01					110.41	~	111.50	112.58	~	112.92	114.34	115.77	~	116.10	117.19	~	118.28
2017/01/30 ~ 2017/02/03	114.89	114.96	112.06	112.69	290p	陽線引け	115.13	112.53	113.91	111.31	113.82	110.93	108.62	110.34	111.52	113.24	114.41	116.13	117.31					109.24	~	110.34	111.45	~	111.79	113.24	114.68	~	115.03	116.13	~	117.24
2017/02/06 ~ 2017/02/10	112.56	113.86	111.60	113.36	225p	陽線引け	113.86	111.60	114.73	112.48	114.73	112.48	109.77	110.69	112.02	112.94	114.27	115.19	116.53	113.51	Bear			109.83	~	110.69	111.55	~	111.81	112.94	114.07	~	114.33	115.19	~	116.05
2017/02/13 ~ 2017/02/17	113.65	114.96	112.62	112.89	234p	陽線引け	114.96	112.62	113.92	111.59	113.92	111.59	109.69	111.15	112.02	113.49	114.36	115.83	116.69	113.22	Bull			110.26	~	111.15	112.05	~	112.32	113.49	114.66	~	114.93	115.83	~	116.72

EUR/JPY										Demark						Pivot						Fibonacci Zone														
当日のOHLCLから計算される翌日の										TD Range Projection						TD pivot points																				
日足	Open	High	Low	Close	値幅/日	引け形態	真の高値	真の安値	予想高値	予想安値	予想高値	予想安値	StopLoss	Support			Resistance			StopLoss	3-days AVG		Support Zone 2		Support Zone 1		BP	Resistance Zone 1		Resistance Zone 2						
													LBOP	S2	S1	PP	R1	R2	HBOP																	
2017/02/13	120.82	121.17	120.39	120.55	78p	陽線引け	-	-	-	-	-	-	119.46	119.93	120.24	120.70	121.02	121.48	121.80					119.63	~	119.93	120.22	~	120.31	120.70	121.09	~	121.19	121.48	~	121.78
2017/02/14	120.54	121.00	120.23	120.93	77p	陽線引け	121.00	120.23	121.34	120.58	121.34	120.58	119.68	119.95	120.44	120.72	121.21	121.48	121.97					119.66	~	119.95	120.25	~	120.34	120.72	121.10	~	121.19	121.48	~	121.78
2017/02/15	120.93	121.28	120.71	121.09	57p	陽線引け	121.28	120.71	121.47	120.90	121.47	120.90	120.20	120.46	120.77	121.03	121.34	121.60	121.91	120.82	Bull			120.24	~	120.46	120.67	~	120.74	121.03	121.31	~	121.38	121.60	~	121.82
2017/02/16	121.08	121.17	120.70	120.85	46p	陽線引け	121.17	120.70	121.01	120.55	121.01	120.55	120.18	120.44	120.65	120.91	121.11	121.37	121.57	120.88	Bull			120.27	~	120.44	120.62	~	120.68	120.91	121.14	~	121.19	121.37	~	121.55
2017/02/17	120.87	121.10	119.71	119.76	139p	陽線引け	121.10	119.71	120.43	119.04	120.43	119.04	117.88	118.79	119.28	120.19	120.67	121.58	122.06	120.71	Bear			118.26	~	118.79	119.33	~	119.49	120.19	120.89	~	121.05	121.58	~	122.11
2017/01/23 ~ 2017/01/27	122.44	123.31	121.14	123.15	217p	陽線引け	-	-	-	-	-	-	119.58	120.36	121.75	122.53	123.93	124.71	126.10					119.53	~	120.36	121.19	~	121.45	122.53	123.62	~	123.88	124.71	~	125.54
2017/01/30 ~ 2017/02/03	123.10	123.12	121.02	121.47	210p	陽線引け	123.15	121.14	122.31	120.30	122.30	120.20	118.52	119.77	120.62	121.87	122.72	123.97	124.82					118.97	~	119.77	120.58	~	120.82	121.87	122.92	~	123.17	123.97	~	124.78
2017/02/06 ~ 2017/02/10	121.40	121.50	119.33	120.58	217p	陽線引け	121.50	119.33	121.04	118.87	121.04	118.87	117.27	118.30	119.44	120.47	121.61	122.64	123.78	121.63	Bear			117.47	~	118.30	119.13	~	119.38	120.47	121.56	~	121.81	122.64	~	123.47
2017/02/13 ~ 2017/02/17	120.82	121.28	119.71	119.76	158p	陽線引け	121.28	119.71	120.52	118.94	120.52	118.94	117.64	118.67	119.22	120.25	120.79	121.83	122.37	120.86	Bear			118.07	~	118.67	119.27	~	119.46	120.25	121.04	~	121.22	121.83	~	122.43

EUR/USD										Demark						Pivot						Fibonacci Zone														
当日のOHLCLから計算される翌日の										TD Range Projection						TD pivot points																				
日足	Open	High	Low	Close	値幅/日	引け形態	真の高値	真の安値	予想高値	予想安値	予想高値	予想安値	StopLoss	Support			Resistance			StopLoss	3-days AVG		Support Zone 2		Support Zone 1		BP	Resistance Zone 1		Resistance Zone 2						
													LBOP	S2	S1	PP	R1	R2	HBOP																	
2017/02/13	1.0632	1.0658	1.0592	1.0596	66p	陽線引け	-	-	-	-	-	-	1.0507	1.0549	1.0573	1.0615	1.0639	1.0681	1.0705					1.0524	~	1.0549	1.0575	~	1.0582	1.0615	1.0648	~	1.0656	1.0681	~	1.0707
2017/02/14	1.0596	1.0633	1.0561	1.0578	72p	陽線引け	1.0633	1.0561	1.0606	1.0533	1.0606	1.0533	1.0476	1.0519	1.0548	1.0591	1.0620	1.0663	1.0692					1.0491	~	1.0519	1.0546	~	1.0555	1.0591	1.0627	~	1.0635	1.0663	~	1.0690
2017/02/15	1.0578	1.0609	1.0522	1.0593	87p	陽線引け	1.0609	1.0522	1.0644	1.0557	1.0644	1.0557	1.0453	1.0488	1.0540	1.0574	1.0627	1.0661	1.0714	1.0594	Bear			1.0454	~	1.0488	1.0521	~	1.0531	1.0574	1.0618	~	1.0628	1.0661	~	1.0694
2017/02/16	1.0592	1.0679	1.0592	1.0669	87p	陽線引け	1.0679	1.0592	1.0717	1.0630	1.0717	1.0630	1.0527	1.0560	1.0614	1.0647	1.0701	1.0734	1.0788	1.0604	Bull			1.0527	~	1.0560	1.0593	~	1.0603	1.0647	1.0690	~	1.0700	1.0734	~	1.0767
2017/02/17	1.0669	1.0676	1.0606	1.0608	71p	陽線引け	1.0676	1.0606	1.0642	1.0572	1.0642	1.0572	1.0513	1.0559	1.0584	1.0630	1.0655	1.0701	1.0725	1.0617	Bull			1.0532	~	1.0559	1.0586	~	1.0595	1.0630	1.0665	~	1.0674	1.0701	~	1.0728
2017/01/23 ~ 2017/01/27	1.0704	1.0774	1.0658	1.0696	116p	陽線引け	-	-	-	-	-	-	1.0529	1.0593	1.0645	1.0709	1.0761	1.0825	1.0877					1.0549	~	1.0593	1.0638	~	1.0651	1.0709	1.0767	~	1.0781	1.0825	~	1.0870
2017/01/30 ~ 2017/02/03	1.0714	1.0829	1.0621	1.0779	208p	陽線引け	1.0829	1.0621	1.0889	1.0718	1.0889	1.0718	1.0908	1.0535	1.0657	1.0743	1.0865	1.0951	1.1073					1.0455	~	1.0535	1.0614	~	1.0639	1.0743	1.0847	~	1.0871	1.0951	~	1.1030
2017/02/06 ~ 2017/02/10	1.0785	1.0789	1.0608	1.0637	181p	陽線引け	1.0789	1.0608	1.0713	1.0532	1.0713	1.0532	1.0386	1.0497	1.0567	1.0678	1.0748	1.0858	1.0928	1.0710	Bear			1.0428	~	1.0497	1.0566	~	1.0587	1.0678	1.0768	~	1.0789	1.0858	~	1.0927
2017/02/13 ~ 2017/02/17	1.0632																																			

IMM扱い8通貨/ダウ/日経/金/オイル/主要クロス円の過去5日及び過去5週の4本値

AUDUSD 5					CADUSD 5					CHFUSD 5				
Date	Open	High	Low	Close	Date	Open	High	Low	Close	Date	Open	High	Low	Close
2017/02/17	0.7693	0.7713	0.7656	0.7668	2017/02/17	0.7651	0.7657	0.7618	0.7634	2017/02/17	1.0026	1.0031	0.9967	0.9971
2017/02/16	0.7711	0.7732	0.7685	0.7693	2017/02/16	0.7647	0.7686	0.7645	0.7651	2017/02/16	0.9942	1.0032	0.9942	1.0026
2017/02/15	0.7673	0.7720	0.7637	0.7711	2017/02/15	0.7648	0.7654	0.7622	0.7646	2017/02/15	0.9937	0.9953	0.9883	0.9942
2017/02/14	0.7640	0.7696	0.7618	0.7673	2017/02/14	0.7650	0.7677	0.7630	0.7648	2017/02/14	0.9941	0.9969	0.9916	0.9937
2017/02/13	0.7665	0.7678	0.7631	0.7640	2017/02/13	0.7638	0.7660	0.7621	0.7650	2017/02/13	0.9965	0.9980	0.9931	0.9942

CNYUSD 5					EURUSD 5					GBPUSD 5				
Date	Open	High	Low	Close	Date	Open	High	Low	Close	Date	Open	High	Low	Close
2017/02/17	0.1460	0.1459	0.1460	0.1460	2017/02/17	1.0669	1.0676	1.0606	1.0608	2017/02/17	1.2486	1.2511	1.2389	1.2415
2017/02/16	0.1461	0.1460	0.1461	0.1461	2017/02/16	1.0592	1.0679	1.0592	1.0669	2017/02/16	1.2462	1.2523	1.2455	1.2486
2017/02/15	0.1458	0.1457	0.1458	0.1458	2017/02/15	1.0578	1.0609	1.0522	1.0593	2017/02/15	1.2474	1.2481	1.2384	1.2462
2017/02/14	0.1458	0.1454	0.1455	0.1457	2017/02/14	1.0596	1.0633	1.0561	1.0578	2017/02/14	1.2527	1.2548	1.2446	1.2474
2017/02/13	0.1455	0.1453	0.1456	0.1455	2017/02/13	1.0632	1.0658	1.0592	1.0596	2017/02/13	1.2491	1.2539	1.2481	1.2527

JPYUSD 5					MXNUSD 5					NZDUSD 5				
Date	Open	High	Low	Close	Date	Open	High	Low	Close	Date	Open	High	Low	Close
2017/02/17	0.8827	0.8879	0.8811	0.8858	2017/02/17	4.8870	4.9045	4.8679	4.8918	2017/02/17	0.7214	0.7221	0.7180	0.7185
2017/02/16	0.8749	0.8842	0.8749	0.8828	2017/02/16	4.9166	4.9355	4.9007	4.9077	2017/02/16	0.7214	0.7243	0.7207	0.7213
2017/02/15	0.8747	0.8781	0.8699	0.8748	2017/02/15	4.9231	4.9396	4.8896	4.9368	2017/02/15	0.7171	0.7231	0.7147	0.7214
2017/02/14	0.8790	0.8830	0.8734	0.8747	2017/02/14	4.9416	4.9486	4.9030	4.9326	2017/02/14	0.7176	0.7198	0.7135	0.7171
2017/02/13	0.8799	0.8814	0.8759	0.8790	2017/02/13	4.9207	4.9282	4.9065	4.9267	2017/02/13	0.7201	0.7218	0.7156	0.7176

Nikkei 225 - Japan (NIX)					出来高	
Date	Open	High	Low	Close	(ドル建て終値)	出来高
2017/02/17	19228.74	19275.39	19173.53	19234.62	169.57	0 2029295200
2017/02/16	19431.61	19431.61	19260.24	19347.53	169.79	1377753344 2027946100
2017/02/15	19438.81	19495.62	19420.00	19437.98	169.79	1427865344 2104594400
2017/02/14	19478.86	19501.01	19232.85	19238.98	169.43	1428299648 2104665500
2017/02/13	19513.78	19519.44	19418.18	19459.15	171.40	1178644480 1880563000
週4本値	19513.78	19519.44	19173.53	19234.62	169.57	(N225銘柄計) (東証一部全体計)

XAUUSD 5				
Date	Open	High	Low	Close
2017/02/17	1239.20	1243.86	1235.12	1236.12
2017/02/16	1233.56	1242.38	1232.21	1239.10
2017/02/15	1227.53	1233.67	1216.82	1233.67
2017/02/14	1225.46	1234.59	1222.04	1228.09
2017/02/13	1232.91	1233.02	1219.43	1225.33
週4本値	1232.91	1243.86	1216.82	1236.12

Dow Jones Industrial - USA (DJIA)					出来高
Date	Open	High	Low	Close	出来高
2017/02/17	20564.13	20624.05	20532.61	20624.05	340617992
2017/02/16	20627.31	20639.87	20556.83	20619.77	354119442
2017/02/15	20504.27	20620.45	20496.03	20611.86	384384845
2017/02/14	20374.22	20504.41	20374.02	20504.41	356578298
2017/02/13	20338.54	20441.48	20322.95	20412.16	314624766
週4本値	20338.54	20639.87	20322.95	20624.05	340617992

Historical Data by **Stooq**
 Historical Data by **MarketNewsline** (ダウと日経)
 Arrangement by **FX_勝てば官軍?**

Crude Light Oil 5					出来高
Date	Open	High	Low	Close	出来高
2017/02/17	53.43	53.52	52.91	53.38	
2017/02/16	52.98	53.58	52.72	53.46	
2017/02/15	53.01	53.48	52.76	52.99	
2017/02/14	52.99	53.70	52.87	53.03	1036256
2017/02/13	53.88	53.95	52.78	52.88	1111933
週4本値	53.88	53.95	52.72	53.38	

USDJPY 5					EURJPY 5					GBPJPY 5				
日付	始値	高値	安値	終値	日付	始値	高値	安値	終値	日付	始値	高値	安値	終値
2017/02/17	113.29	113.50	112.62	112.89	2017/02/17	120.87	121.10	119.71	119.76	2017/02/17	141.45	141.95	139.65	140.16
2017/02/16	114.31	114.31	113.10	113.28	2017/02/16	121.08	121.17	120.70	120.85	2017/02/16	142.45	142.47	141.26	141.43
2017/02/15	114.32	114.96	113.88	114.31	2017/02/15	120.93	121.28	120.71	121.09	2017/02/15	142.60	142.81	141.85	142.45
2017/02/14	113.76	114.50	113.26	114.32	2017/02/14	120.54	121.00	120.23	120.93	2017/02/14	142.50	142.72	141.06	142.60
2017/02/13	113.65	114.17	113.46	113.77	2017/02/13	120.82	121.17	120.39	120.55	2017/02/13	141.95	142.62	141.93	142.51

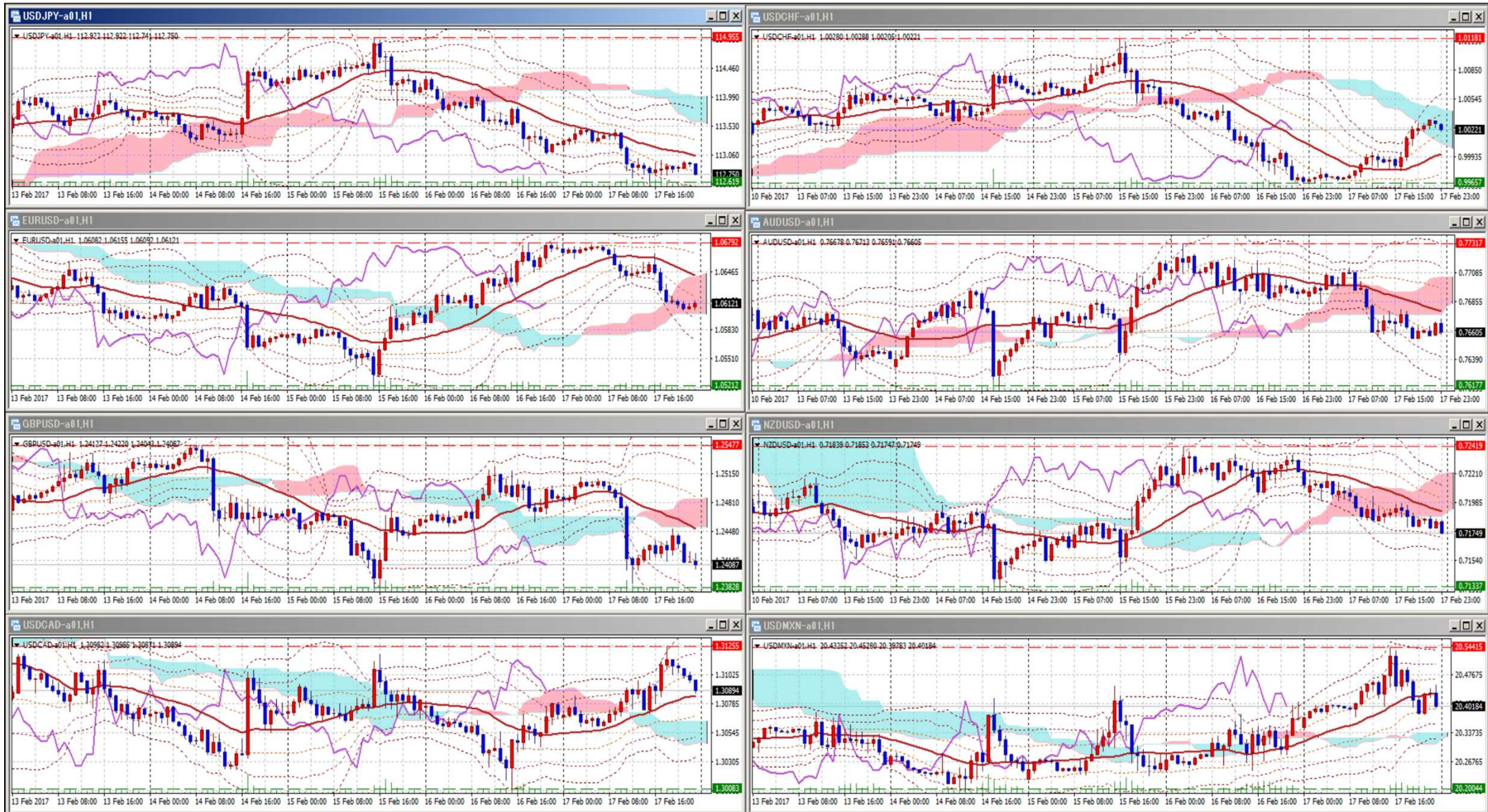
USDJPY Weekly 28					EURJPY Weekly 28					GBPJPY Weekly 28				
日付	始値	高値	安値	終値	日付	始値	高値	安値	終値	日付	始値	高値	安値	終値
2017/02/17	113.65	114.96	112.62	112.89	2017/02/17	120.82	121.28	119.71	119.76	2017/02/17	141.95	142.81	139.65	140.16
2017/02/10	112.56	113.86	111.60	113.36	2017/02/10	121.40	121.50	119.33	120.58	2017/02/10	140.47	142.38	138.55	141.54
2017/02/03	114.89	114.96	112.06	112.69	2017/02/03	123.10	123.12	121.02	121.47	2017/02/03	144.38	144.62	140.39	140.66
2017/01/27	114.39	115.38	112.53	115.13	2017/01/27	122.44	123.31	121.14	123.15	2017/01/27	141.61	144.79	140.77	144.53
2017/01/20	114.42	115.62	112.58	114.50	2017/01/20	121.55	122.95	120.55	122.47	2017/01/20	137.83	142.17	136.48	141.53

先週のIMM取り扱い対ドル8通貨チャート

※ 赤点線は週最高値/青天線は週最低値、BB中心線はSMA21

2017/02/13 ~ 2017/02/17

Chart by OANDA Japan MetaTrader4



Pivot Maker Ver 3.0 by FX_勝てば官軍?

<http://fx.najirane.com>