

JAPANESE YEN - CHICAGO MERCANTILE EXCHANGE
2017/02/07 ~ 2017/08/01

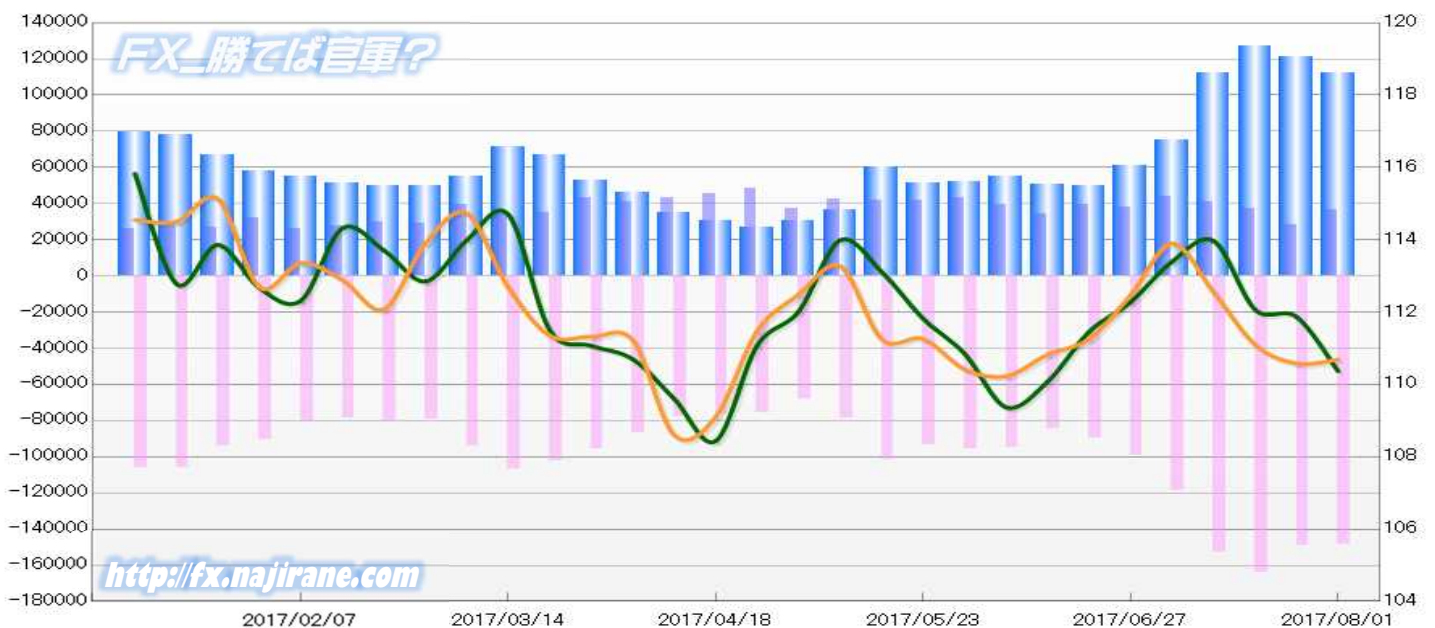
Code-097741

2017/08/04 NYクローズ時公表値

Report_Date	Non Commercial Positions												火曜日 引け値	金曜日 引け値
	Long	増減	増減(%)	Short	増減	増減(%)	売り越し	増減	増減(%)	売買計	増減	増減(%)		
2017/08/01	36445	8427	30.1%	148641	-866	-0.6%	112196	-9293	-7.6%	185086	7561	4.3%	110.37	110.69
2017/07/25	28018	-9401	-25.1%	149507	-14831	-9.0%	121489	-5430	-4.3%	177525	-24232	-12.0%	111.87	110.58
2017/07/18	37419	-3359	-8.2%	164338	11435	7.5%	126919	14794	13.2%	201757	8076	4.2%	112.07	111.10
2017/07/11	40778	-2870	-6.6%	152903	34219	28.8%	112125	37089	49.4%	193681	31349	19.3%	113.97	112.55
2017/07/03	43648	5394	14.1%	118684	19080	19.2%	75036	13686	22.3%	162332	24474	17.8%	113.40	113.90
2017/06/27	38254	-1244	-3.1%	99604	10147	11.3%	61350	11391	22.8%	137858	8903	6.9%	112.28	112.47
2017/06/20	39498	5338	15.6%	89457	4744	5.6%	49959	-594	-1.2%	128955	10082	8.5%	111.46	111.26
2017/06/13	34160	-5576	-14.0%	84713	-10050	-10.6%	50553	-4474	-8.1%	118873	-15626	-11.6%	110.08	110.83
2017/06/06	39736	-3668	-8.5%	94763	-916	-1.0%	55027	2752	5.3%	134499	-4584	-3.3%	109.37	110.23
2017/05/30	43404	1484	3.5%	95679	2103	2.2%	52275	619	1.2%	139083	3587	2.6%	110.85	110.42
2017/05/23	41920	-43	-0.1%	93576	-8395	-8.2%	51656	-8352	-13.9%	135496	-8438	-5.9%	111.82	111.26
2017/05/16	41963	-672	-1.6%	101971	23029	29.2%	60008	23701	65.3%	143934	22357	18.4%	113.11	111.25
2017/05/09	42635	5116	13.6%	78942	10940	16.1%	36307	5824	19.1%	121577	16056	15.2%	113.99	113.27
2017/05/02	37519	-11019	-22.7%	68002	-7405	-9.8%	30483	3614	13.5%	105521	-18424	-14.9%	112.02	112.49
2017/04/25	48538	2777	6.1%	75407	-817	-1.1%	26869	-3594	-11.8%	123945	1960	1.6%	111.08	111.48
2017/04/18	45761	2445	5.6%	76224	-1856	-2.4%	30463	-4301	-12.4%	121985	589	0.5%	108.44	109.11
2017/04/11	43316	2003	4.8%	78080	-9033	-10.4%	34764	-11036	-24.1%	121396	-7030	-5.5%	109.60	108.60
2017/04/04	41313	-1573	-3.7%	87113	-8954	-9.3%	45800	-7381	-13.9%	128426	-10527	-7.6%	110.70	111.22
2017/03/28	42886	7847	22.4%	96067	-5959	-5.8%	53181	-13806	-20.6%	138953	1888	1.4%	111.07	111.32
2017/03/21	35039	-524	-1.5%	102026	-4834	-4.5%	66987	-4310	-6.0%	137065	-5358	-3.8%	111.50	111.35
2017/03/14	35563	-3640	-9.3%	106860	12957	13.8%	71297	16597	30.3%	142423	9317	7.0%	114.70	112.68
2017/03/07	39203	10191	35.1%	93903	14874	18.8%	54700	4683	9.4%	133106	25065	23.2%	113.99	114.73
2017/02/28	29012	-942	-3.1%	79029	-1087	-1.4%	50017	-145	-0.3%	108041	-2029	-1.8%	112.85	113.90
2017/02/21	29954	2253	8.1%	80116	1131	1.4%	50162	-1122	-2.2%	110070	3384	3.2%	113.71	112.08
2017/02/14	27701	1827	7.1%	78985	-1949	-2.4%	51284	-3776	-6.9%	106686	-122	-0.1%	114.32	112.89
2017/02/07	25874			80934			55060			106808			112.32	113.36

JAPANESE YEN - CHICAGO MERCANTILE EXCHANGE
FUTURES ONLY POSITIONS

— 金曜終値 — 火曜終値 — Short枚数 — Long枚数 — 売り越し枚数(マイナスの場合は買越しと読替え)



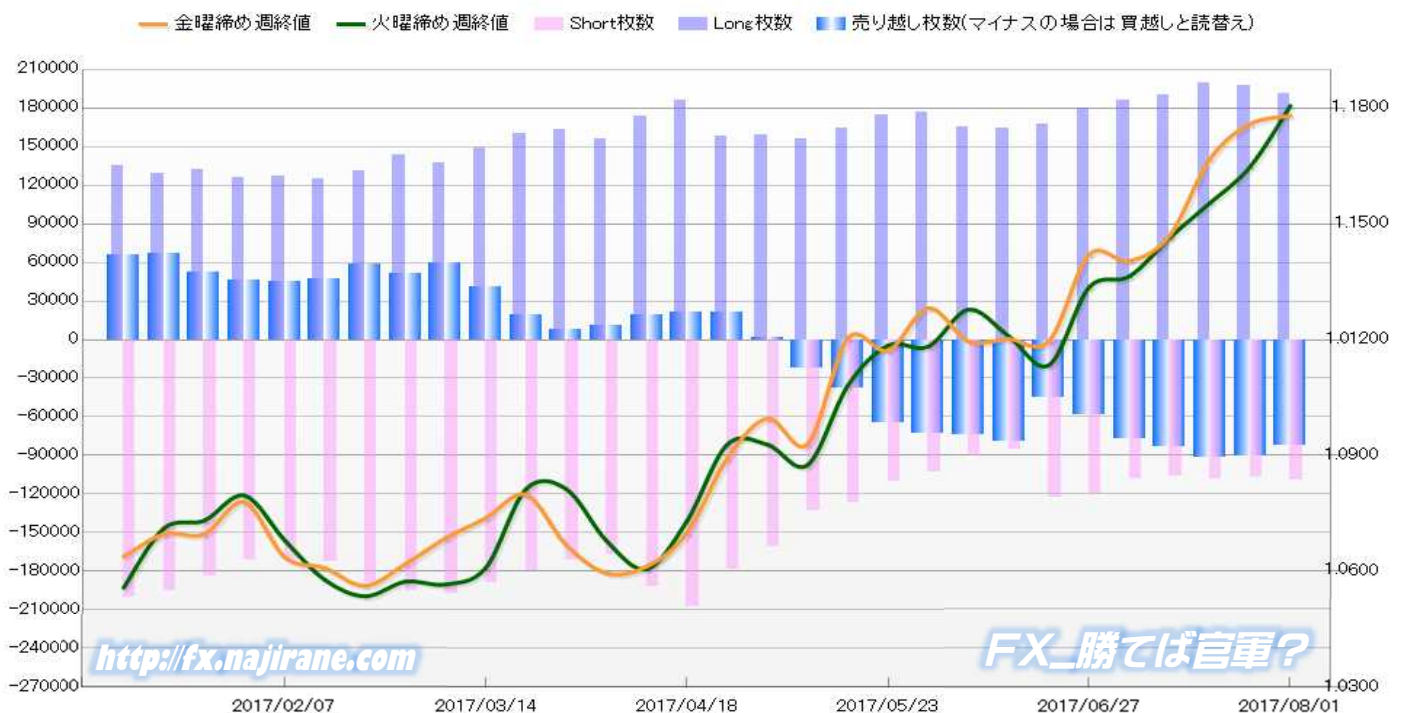
EURO FX - CHICAGO MERCANTILE EXCHANGE
2017/02/07 ~ 2017/08/01

Code-099741

2017/08/04 NYクローズ時公表値

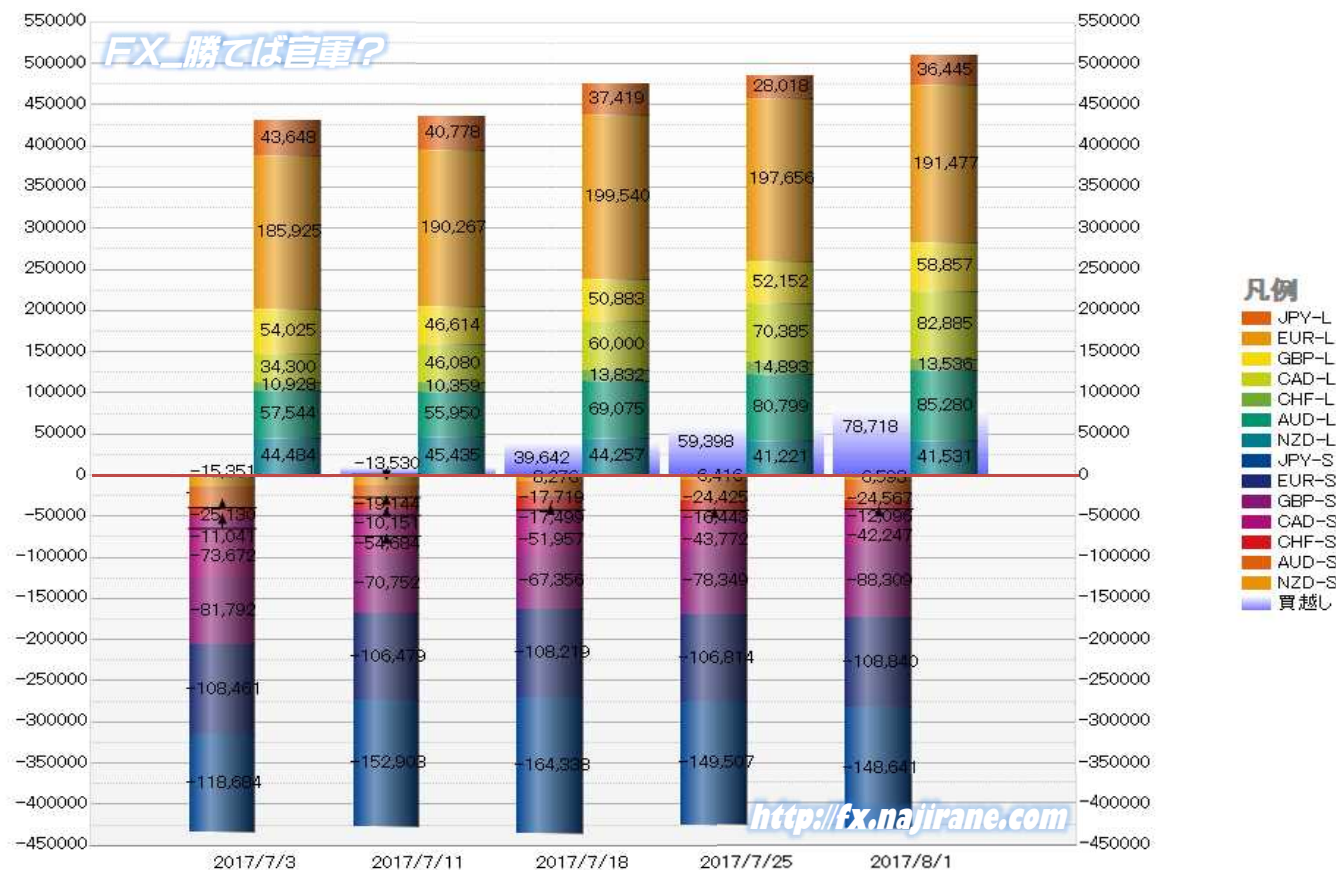
Report_Date	Non Commercial Positions									火曜日 引け値	金曜日 引け値			
	Long	増減		Short	増減		売り越し	増減						
2017/08/01	191477	-6179	-3.1%	108840	2026	1.9%	-82637	-8205	-9.0%	300317	-4153	-1.4%	1.1806	1.1780
2017/07/25	197656	-1884	-0.9%	106814	-1405	-1.3%	-90842	-479	-0.5%	304470	-3289	-1.1%	1.1648	1.1759
2017/07/18	199540	9273	4.9%	108219	1740	1.6%	-91321	7533	9.0%	307759	11013	3.7%	1.1554	1.1668
2017/07/11	190267	4342	2.3%	106479	-1982	-1.8%	-83788	6324	8.2%	296746	2360	0.8%	1.1465	1.1470
2017/07/03	185925	6254	3.5%	108461	-12515	-10.3%	-77464	18769	32.0%	294386	-6261	-2.1%	1.1364	1.1404
2017/06/27	179671	12426	7.4%	120976	-1417	-1.2%	-58695	13843	30.9%	300647	11009	3.8%	1.1336	1.1421
2017/06/20	167245	3018	1.8%	122393	37219	43.7%	-44852	-34201	-43.3%	289638	40237	16.1%	1.1134	1.1197
2017/06/13	164227	-662	-0.4%	85174	-5706	-6.3%	-79053	5044	6.8%	249401	-6368	-2.5%	1.1209	1.1201
2017/06/06	164889	-11337	-6.4%	90880	-12477	-12.1%	-74009	1140	1.6%	255769	-23814	-8.5%	1.1278	1.1196
2017/05/30	176226	1194	0.7%	103357	-6830	-6.2%	-72869	8024	12.4%	279583	-5636	-2.0%	1.1182	1.1282
2017/05/23	175032	10798	6.6%	110187	-16443	-13.0%	-64845	27241	72.4%	285219	-5645	-1.9%	1.1185	1.1172
2017/05/16	164234	8653	5.6%	126630	-6552	-4.9%	-37604	15205	67.9%	290864	2101	0.7%	1.1081	1.1204
2017/05/09	155581	-3837	-2.4%	133182	-27889	-17.3%	-22399	-24052	-1455.1%	288763	-31726	-9.9%	1.0876	1.0930
2017/05/02	159418	1587	1.0%	161071	-17655	-9.9%	1653	-19242	-92.1%	320489	-16068	-4.8%	1.0929	1.0996
2017/04/25	157831	-27955	-15.0%	178726	-28709	-13.8%	20895	-754	-3.5%	336557	-56664	####	1.0928	1.0892
2017/04/18	185786	12192	7.0%	207435	14885	7.7%	21649	2693	14.2%	393221	27077	7.4%	1.0730	1.0699
2017/04/11	173594	18126	11.7%	192550	25677	15.4%	18956	7551	66.2%	366144	43803	13.6%	1.0606	1.0612
2017/04/04	155468	-8180	-5.0%	166873	-4698	-2.7%	11405	3482	43.9%	322341	-12878	-3.8%	1.0679	1.0595
2017/03/28	163648	4058	2.5%	171571	-7681	-4.3%	7923	-11739	-59.7%	335219	-3623	-1.1%	1.0813	1.0668
2017/03/21	159590	11318	7.6%	179252	-10047	-5.3%	19662	-21365	-52.1%	338842	1271	0.4%	1.0813	1.0798
2017/03/14	148272	10610	7.7%	189299	-7864	-4.0%	41027	-18474	-31.0%	337571	2746	0.8%	1.0609	1.0738
2017/03/07	137662	-5922	-4.1%	197163	2415	1.2%	59501	8337	16.3%	334825	-3507	-1.0%	1.0566	1.0686
2017/02/28	143584	12603	9.6%	194748	5516	2.9%	51164	-7087	-12.2%	338332	18119	5.7%	1.0573	1.0619
2017/02/21	130981	5648	4.5%	189232	17135	10.0%	58251	11487	24.6%	320213	22783	7.7%	1.0535	1.0562
2017/02/14	125333	-1375	-1.1%	172097	438	0.3%	46764	1813	4.0%	297430	-937	-0.3%	1.0578	1.0608
2017/02/07	126708			171659			44951			298367			1.0681	1.0637

EURO FX - CHICAGO MERCANTILE EXCHANGE
FUTURES ONLY POSITIONS



	2017/07/03			2017/07/11			2017/07/18			2017/07/25			2017/08/01		
	Long	Short	売り越し	Long	Short	売り越し	Long	Short	売り越し	Long	Short	売り越し	Long	Short	売り越し
JPY	43648	118684	75036	40778	152903	112125	37419	164338	126919	28018	149507	121489	36445	148641	112196
	前週比 枚数増減 (枚)			-2870	34219	37089	-3359	11435	14794	-9401	-14831	-5430	8427	-866	-9293
	前週比 枚数増減 (%)			-6.58%	28.83%	49.43%	-8.24%	7.48%	13.19%	-25.12%	-9.02%	-4.28%	30.08%	-0.58%	-7.65%
EUR	185925	108461	-77464	190267	106479	-83788	199540	108219	-91321	197656	106814	-90842	191477	108840	-82637
	前週比 枚数増減 (枚)			4342	-1982	6324	9273	1740	7533	-1884	-1405	-479	-6179	2026	-8205
	前週比 枚数増減 (%)			2.34%	-1.83%	8.16%	4.87%	1.63%	8.99%	-0.94%	-1.30%	-0.52%	-3.13%	1.90%	-9.03%
GBP	54025	81792	27767	46614	70752	24138	50883	67356	16473	52152	78349	26197	58857	88309	29452
	前週比 枚数増減 (枚)			-7411	-11040	-3629	4269	-3396	-7665	1269	10993	9724	6705	9960	3255
	前週比 枚数増減 (%)			-13.72%	-13.50%	-13.07%	9.16%	-4.80%	-31.75%	2.49%	16.32%	59.03%	12.86%	12.71%	12.43%
AUD	57544	25130	-32414	55950	19144	-36806	69075	17719	-51356	80799	24425	-56374	85280	24567	-60713
	前週比 枚数増減 (枚)			-1594	-5986	4392	13125	-1425	14550	11724	6706	5018	4481	142	4339
	前週比 枚数増減 (%)			-2.77%	-23.82%	13.55%	23.46%	-7.44%	39.53%	16.97%	37.85%	9.77%	5.55%	0.58%	7.70%
CAD	34300	73672	39372	46080	54684	8604	60000	51957	-8043	70385	43772	-26613	82885	42247	-40638
	前週比 枚数増減 (枚)			11780	-18988	-30768	13920	-2727	-561	10385	-8185	18570	12500	-1525	14025
	前週比 枚数増減 (%)			34.34%	-25.77%	-78.15%	30.21%	-4.99%	-193.48%	17.31%	-15.75%	230.88%	17.76%	-3.48%	52.70%
CHF	10928	11041	113	10359	10151	-208	13832	17499	3667	14893	16443	1550	13536	12096	-1440
	前週比 枚数増減 (枚)			-569	-890	95	3473	7348	3459	1061	-1056	-2117	-1357	-4347	-110
	前週比 枚数増減 (%)			-5.21%	-8.06%	-284.07%	33.53%	72.39%	-1862.98%	7.67%	-6.03%	-57.73%	-9.11%	-26.44%	-192.90%
NZD	44484	15351	-29133	45435	13530	-31905	44257	8276	-35981	41221	6416	-34805	41531	6593	-34938
	前週比 枚数増減 (枚)			951	-1821	2772	-1178	-5254	4076	-3036	-1860	-1176	310	177	133
	前週比 枚数増減 (%)			2.14%	-11.86%	9.51%	-2.59%	-38.83%	12.78%	-6.86%	-22.47%	-3.27%	0.75%	2.76%	0.38%
MXN	119408	34549	-84859	125291	27432	-97859	130155	17616	-112539	130075	17185	-112890	130186	16637	-113549
	前週比 枚数増減 (枚)			5883	-7117	13000	4864	-9816	14680	-80	-431	351	111	-548	659
	前週比 枚数増減 (%)			4.93%	-20.60%	15.32%	3.88%	-35.78%	15.00%	-0.06%	-2.45%	0.31%	0.09%	-3.19%	0.58%
Total All 8	550262	468680	-81582	560774	455075	-105699	605161	452980	-152181	615199	442911	-172288	640197	447930	-192267
	前週比 枚数増減 (枚)			10512	-13605	24117	44387	-2095	46482	10038	-10069	20107	24998	5019	19979
	前週比 枚数増減 (%)			1.91%	-2.90%	29.56%	7.92%	-0.46%	43.98%	1.66%	-2.22%	13.21%	4.06%	1.13%	11.60%
Total 7 (MXN除く)	430854	434131	3277	435483	427643	-7840	475006	435364	-39642	485124	425726	-59398	510011	431293	-78718
	前週比 枚数増減 (枚)			4629	-6488	4563	39523	7721	31802	10118	-9638	19756	24887	5567	19320
	前週比 枚数増減 (%)			1.07%	-1.49%	-339.24%	9.08%	1.81%	405.64%	2.13%	-2.21%	49.84%	5.13%	1.31%	32.53%

直近5週 CFTC IMM主要7通貨の構成

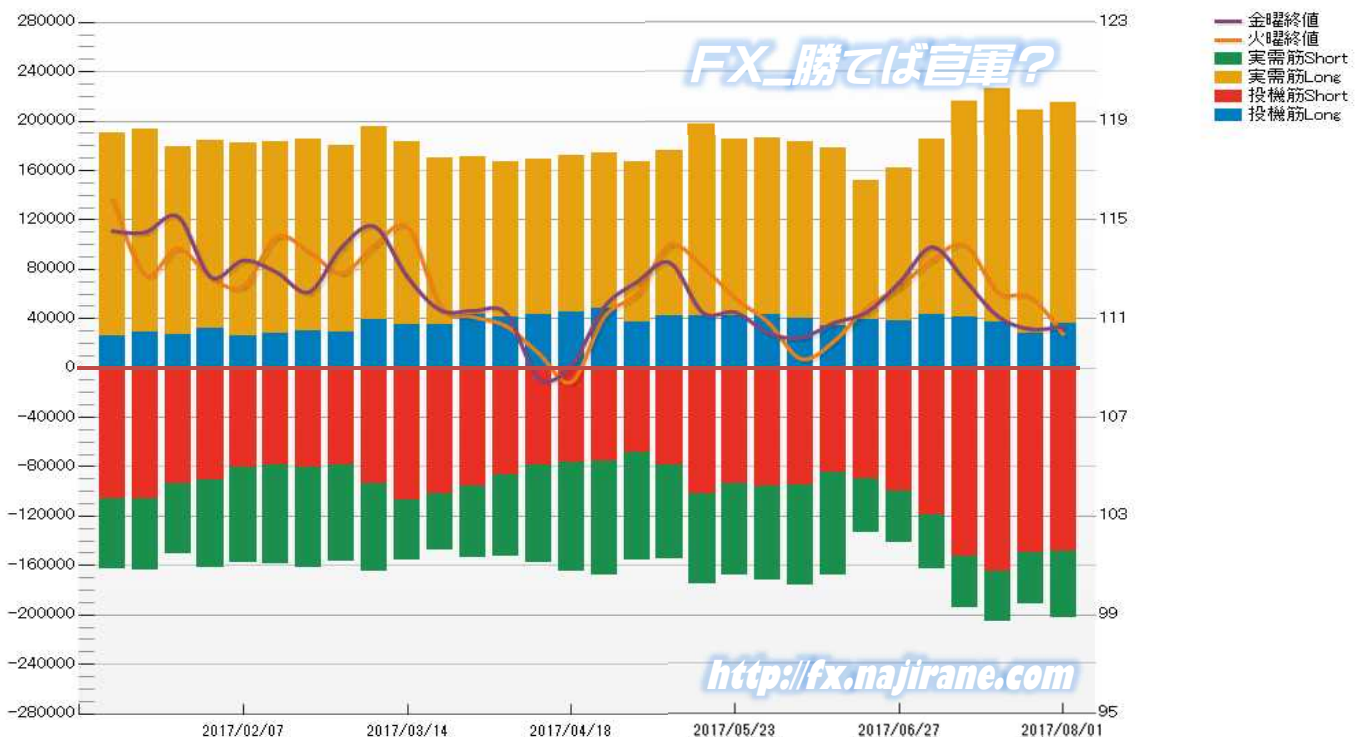


JAPANESE YEN - CHICAGO MERCANTILE EXCHANGE
FUTURES ONLY POSITIONS

Code-097741
2017/08/04 公表値

Date	投機筋集計				実需筋集計				投機筋+実需筋合計				ドル円終値	
	円買い	円売り	売り越し	売買計	円買い	円売り	売り越し	売買計	円買い	円売り	売り越し	売買計	火曜締め	金曜締め
2017/08/01	36445	148641	112196	185086	178378	53446	-124932	231824	214823	202087	-12736	416910	110.37	110.69
2017/07/25	28018	149507	121489	177525	180207	41743	-138464	221950	208225	191250	-16975	399475	111.87	110.58
2017/07/18	37419	164338	126919	201757	188763	41117	-147646	229880	226182	205455	-20727	431637	112.07	111.10
2017/07/11	40778	152903	112125	193681	174866	41714	-133152	216580	215644	194617	-21027	410261	113.97	112.55
2017/07/03	43648	118684	75036	162332	141824	43641	-98183	185465	185472	162325	-23147	347797	113.40	113.90
2017/06/27	38254	99604	61350	137858	123453	41443	-82010	164896	161707	141047	-20660	302754	112.28	112.47
2017/06/20	39498	89457	49959	128955	112255	44243	-68012	156498	151753	133700	-18053	285453	111.46	111.26
2017/06/13	34160	84713	50553	118873	144233	83337	-60896	227570	178393	168050	-10343	346443	110.08	110.83
2017/06/06	39736	94763	55027	134499	143746	81444	-62302	225190	183482	176207	-7275	359689	109.37	110.23
2017/05/30	43404	95679	52275	139083	143450	76426	-67024	219876	186854	172105	-14749	358959	110.85	110.42
2017/05/23	41920	93576	51656	135496	143304	74467	-68837	217771	185224	168043	-17181	353267	111.82	111.26
2017/05/16	41963	101971	60008	143934	155071	72713	-82358	227784	197034	174684	-22350	371718	113.11	111.25
2017/05/09	42635	78942	36307	121577	133992	76099	-57893	210091	176627	155041	-21586	331668	113.99	113.27
2017/05/02	37519	68002	30483	105521	129521	87402	-42119	216923	167040	155404	-11636	322444	112.02	112.49
2017/04/25	48538	75407	26869	123945	125796	91994	-33802	217790	174334	167401	-6933	341735	111.08	111.48
2017/04/18	45761	76224	30463	121985	126595	88467	-38128	215062	172356	164691	-7665	337047	108.44	109.11
2017/04/11	43316	78080	34764	121396	125340	79941	-45399	205281	168656	158021	-10635	326677	109.60	108.60
2017/04/04	41313	87113	45800	128426	126068	65862	-60206	191930	167381	152975	-14406	320356	110.70	111.22
2017/03/28	42886	96067	53181	138953	128200	57371	-70829	185571	171086	153438	-17648	324524	111.07	111.32
2017/03/21	35039	102026	66987	137065	135159	45684	-89475	180843	170198	147710	-22488	317908	111.50	111.35
2017/03/14	35563	106860	71297	142423	148132	48390	-99742	196522	183695	155250	-28445	338945	114.70	112.68
2017/03/07	39203	93903	54700	133106	156075	71228	-84847	227303	195278	165131	-30147	360409	113.99	114.73
2017/02/28	29012	79029	50017	108041	150880	77620	-73260	228500	179892	156649	-23243	336541	112.85	113.90
2017/02/21	29954	80116	50162	110070	155538	81397	-74141	236935	185492	161513	-23979	347005	113.71	112.08
2017/02/14	27701	78985	51284	106686	155557	80051	-75506	235608	183258	159036	-24222	342294	114.32	112.89
2017/02/07	25874	80934	55060	106808	156236	77214	-79022	233450	182110	158148	-23962	340258	112.32	113.36
2017/01/31	32216	90547	58331	122763	152598	71166	-81432	223764	184814	161713	-23101	346527	112.67	112.69
2017/01/24	27127	93967	66840	121094	152556	56703	-95853	209259	179683	150670	-29013	330353	113.86	115.13
2017/01/17	28560	106390	77830	134950	164514	57301	-107213	221815	193074	163691	-29383	356765	112.78	114.50
2017/01/10	26041	105880	79839	131921	164249	56661	-107588	220910	190290	162541	-27749	352831	115.83	114.55

JAPANESE YEN - CHICAGO MERCANTILE EXCHANGE
FUTURES ONLY POSITIONS Code-097741

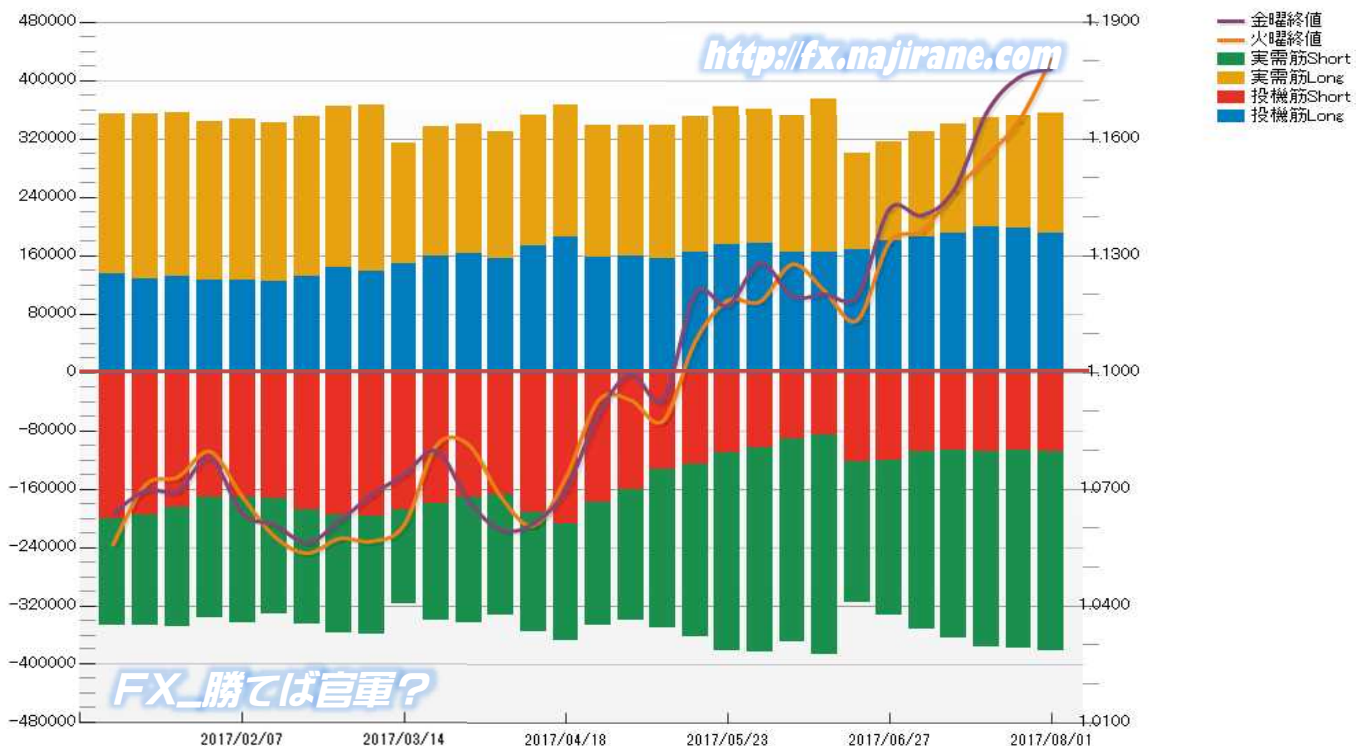


EURO FX - CHICAGO MERCANTILE EXCHANGE
FUTURES ONLY POSITIONS

Code-099741
2017/08/04 公表値

Date	投機筋集計				実需筋集計				投機筋+実需筋合計				ユーロドル終値	
	EUR買い	EUR売り	売り越し	売買計	EUR買い	EUR売り	売り越し	売買計	EUR買い	EUR売り	売り越し	売買計	火曜締め	金曜締め
2017/08/01	191477	108840	-82637	300317	164304	272865	108561	437169	355781	381705	25924	737486	1.1806	1.1780
2017/07/25	197656	106814	-90842	304470	155560	271095	115535	426655	353216	377909	24693	731125	1.1648	1.1759
2017/07/18	199540	108219	-91321	307759	150114	268566	118452	418680	349654	376785	27131	726439	1.1554	1.1668
2017/07/11	190267	106479	-83788	296746	150147	258152	108005	408299	340414	364631	24217	705045	1.1465	1.1470
2017/07/03	185925	108461	-77464	294386	144260	244301	100041	388561	330185	352762	22577	682947	1.1364	1.1404
2017/06/27	179671	120976	-58695	300647	136134	211639	75505	347773	315805	332615	16810	648420	1.1336	1.1421
2017/06/20	167245	122393	-44852	289638	132839	192994	60155	325833	300084	315387	15303	615471	1.1134	1.1197
2017/06/13	164227	85174	-79053	249401	211353	301281	89928	512634	375580	386455	10875	762035	1.1209	1.1201
2017/06/06	164889	90880	-74009	255769	188042	279047	91005	467089	352931	369927	16996	722858	1.1278	1.1196
2017/05/30	176226	103357	-72869	279583	185792	279432	93640	465224	362018	382789	20771	744807	1.1182	1.1282
2017/05/23	175032	110187	-64845	285219	190524	272094	81570	462618	365556	382281	16725	747837	1.1185	1.1172
2017/05/16	164234	126630	-37604	290864	186406	236357	49951	422763	350640	362987	12347	713627	1.1081	1.1204
2017/05/09	155581	133182	-22399	288763	183860	217059	33199	400919	339441	350241	10800	689682	1.0876	1.0930
2017/05/02	159418	161071	1653	320489	179781	178953	-828	358734	339199	340024	825	679223	1.0929	1.0996
2017/04/25	157831	178726	20895	336557	181520	167731	-13789	349251	339351	346457	7106	685808	1.0928	1.0892
2017/04/18	185786	207435	21649	393221	179950	159602	-20348	339552	365736	367037	1301	732773	1.0730	1.0699
2017/04/11	173594	192550	18956	366144	179203	163127	-16076	342330	352797	355677	2880	708474	1.0606	1.0612
2017/04/04	155468	166873	11405	322341	173689	166592	-7097	340281	329157	333465	4308	662622	1.0679	1.0595
2017/03/28	163648	171571	7923	335219	177046	171114	-5932	348160	340694	342685	1991	683379	1.0813	1.0668
2017/03/21	159590	179252	19662	338842	176574	160480	-16094	337054	336164	339732	3568	675896	1.0813	1.0798
2017/03/14	148272	189299	41027	337571	166321	128708	-37613	295029	314593	318007	3414	632600	1.0609	1.0738
2017/03/07	137662	197163	59501	334825	228335	161564	-66771	389899	365997	358727	-7270	724724	1.0566	1.0686
2017/02/28	143584	194748	51164	338332	220938	162414	-58524	383352	364522	357162	-7360	721684	1.0573	1.0619
2017/02/21	130981	189232	58251	320213	220218	155969	-64249	376187	351199	345201	-5998	696400	1.0535	1.0562
2017/02/14	125333	172097	46764	297430	216770	159331	-57439	376101	342103	331428	-10675	673531	1.0578	1.0608
2017/02/07	126708	171659	44951	298367	220490	171635	-48855	392125	347198	343294	-3904	690492	1.0681	1.0637
2017/01/31	125689	171402	45713	297091	218274	164996	-53278	383270	343963	336398	-7565	680361	1.0796	1.0779
2017/01/24	131904	184252	52348	316156	224017	163750	-60267	387767	355921	348002	-7919	703923	1.0731	1.0696
2017/01/17	128846	195346	66500	324192	225333	150756	-74577	376089	354179	346102	-8077	700281	1.0711	1.0697
2017/01/10	134747	200570	65823	335317	219984	147154	-72830	367138	354731	347724	-7007	702455	1.0558	1.0638

EURO FX - CHICAGO MERCANTILE EXCHANGE
FUTURES ONLY POSITIONS Code-099741



過去5日及び過去4週の4本値と各種ピボット

2017/07/31 ~ 2017/08/04

USD/JPY										Demark										Pivot										Fibonacci Zone				
日足	Open	High	Low	Close	値幅/日	引け形態	真の高値	真の安値	予想高値	予想安値	予想高値	予想安値	StopLoss	Support	Pivot	Resistance	StopLoss	3-days AVG	Support Zone 2	Support Zone 1	BP	Resistance Zone 1	Resistance Zone 2											
													LBOP	S2	S1	PP	R1	R2	HBOP															
2017/07/31	110.66	110.76	110.21	110.25	55p	陽線引け	-	-	-	-	-	-	109.51	109.86	110.06	110.41	110.61	110.96	111.16															
2017/08/01	110.26	110.59	109.94	110.37	65p	陽線引け	110.59	109.94	110.80	110.16	110.80	110.16	109.36	109.65	110.01	110.30	110.66	110.95	111.31															
2017/08/02	110.38	110.99	110.29	110.74	70p	陽線引け	110.99	110.29	111.21	110.51	111.21	110.51	109.66	109.97	110.36	110.67	111.05	111.37	111.75	110.46	Bull	109.70	~ 109.97	110.24	~ 110.32	110.67	111.02	~ 111.10	111.37	~ 111.64				
2017/08/03	110.74	110.83	109.87	109.98	96p	陽線引け	110.83	109.87	110.40	109.44	110.40	109.44	108.66	109.26	109.62	110.22	110.58	111.19	111.55	110.40	Bear	108.89	~ 109.26	109.63	~ 109.74	110.22	110.71	~ 110.82	111.19	~ 111.55				
2017/08/04	109.98	111.05	109.85	110.69	120p	陽線引け	111.05	109.85	111.47	110.27	111.47	110.27	108.80	109.33	110.01	110.53	111.21	111.73	112.41	110.47	Bull	108.87	~ 109.33	109.78	~ 109.93	110.53	111.13	~ 111.27	111.73	~ 112.19				
週足	Open	High	Low	Close	値幅/週	引け形態	真の高値	真の安値	予想高値	予想安値	予想高値	予想安値	LBOP	S2	S1	PP	R1	R2	HBOP	3-days AVG	Support Zone 2	Support Zone 1	BP	Resistance Zone 1	Resistance Zone 2									
2017/07/10 ~ 2017/07/14	114.03	114.50	112.28	112.55	222p	陽線引け	-	-	-	-	-	-	109.50	110.89	111.72	113.11	113.93	115.32	116.15															
2017/07/17 ~ 2017/07/21	112.49	112.87	111.02	111.10	185p	陽線引け	112.87	111.10	111.98	110.21	111.98	110.13	108.60	109.81	110.45	111.66	112.31	113.51	114.16															
2017/07/24 ~ 2017/07/28	111.14	112.19	110.55	110.58	163p	陽線引け	112.19	110.55	111.38	109.75	111.38	109.75	108.40	109.47	110.03	111.11	111.66	112.74	113.29	111.96	Bear	108.85	~ 109.47	110.10	~ 110.29	111.11	111.92	~ 112.12	112.74	~ 113.36				
2017/07/31 ~ 2017/08/04	110.66	111.05	109.85	110.69	120p	陽線引け	111.05	109.85	111.47	110.27	111.47	110.27	108.80	109.33	110.01	110.53	111.21	111.73	112.41	111.10	Bear	108.87	~ 109.33	109.78	~ 109.93	110.53	111.13	~ 111.27	111.73	~ 112.19				

EUR/JPY										Demark										Pivot										Fibonacci Zone				
日足	Open	High	Low	Close	値幅/日	引け形態	真の高値	真の安値	予想高値	予想安値	予想高値	予想安値	StopLoss	Support	Pivot	Resistance	StopLoss	3-days AVG	Support Zone 2	Support Zone 1	BP	Resistance Zone 1	Resistance Zone 2											
													LBOP	S2	S1	PP	R1	R2	HBOP															
2017/07/31	130.08	130.60	129.56	130.50	104p	陽線引け	-	-	-	-	-	-	128.80	129.18	129.84	130.22	130.87	131.25	131.91															
2017/08/01	130.50	130.61	129.86	130.30	74p	陽線引け	130.61	129.86	130.45	129.71	130.45	129.71	129.16	129.51	129.91	130.26	130.65	131.00	131.39															
2017/08/02	130.31	131.40	130.27	131.29	113p	陽線引け	131.40	130.27	131.90	130.78	131.90	130.78	129.45	129.86	130.57	130.99	131.70	132.11	132.82	130.49	Bull	129.43	~ 129.86	130.29	~ 130.42	130.99	131.55	~ 131.68	132.11	~ 132.54				
2017/08/03	131.28	131.33	130.47	130.55	86p	陽線引け	131.33	130.47	130.94	130.08	130.94	130.08	129.39	129.93	130.24	130.78	131.10	131.64	131.95	130.68	Bull	129.60	~ 129.93	130.25	~ 130.36	130.78	131.21	~ 131.31	131.64	~ 131.97				
2017/08/04	130.55	131.11	130.10	130.39	101p	陽線引け	131.11	130.10	130.75	129.74	130.75	129.74	128.95	129.52	129.96	130.53	130.96	131.54	131.97	130.77	Bear	129.14	~ 129.52	129.91	~ 130.03	130.53	131.03	~ 131.15	131.54	~ 131.92				
週足	Open	High	Low	Close	値幅/週	引け形態	真の高値	真の安値	予想高値	予想安値	予想高値	予想安値	LBOP	S2	S1	PP	R1	R2	HBOP	3-days AVG	Support Zone 2	Support Zone 1	BP	Resistance Zone 1	Resistance Zone 2									
2017/07/10 ~ 2017/07/14	129.99	130.77	128.51	129.09	226p	陽線引け	-	-	-	-	-	-	125.88	127.19	128.14	129.46	130.41	131.72	132.67															
2017/07/17 ~ 2017/07/21	129.03	130.51	128.58	129.63	192p	陽線引け	130.51	128.51	131.07	129.07	131.03	129.11	126.71	127.65	128.64	129.57	130.56	131.50	132.49															
2017/07/24 ~ 2017/07/28	129.67	130.60	128.88	130.03	172p	陽線引け	130.60	128.88	131.17	129.45	131.17	129.45	127.36	128.12	129.07	129.83	130.79	131.55	132.51	129.62	Bull	127.46	~ 128.12	128.77	~ 128.98	129.83	130.69	~ 130.90	131.55	~ 132.21				
2017/07/31 ~ 2017/08/04	130.08	131.40	129.56	130.39	184p	陽線引け	131.40	129.56	131.81	129.97	131.81	129.97	127.66	128.61	129.50	130.45	131.34	132.29	133.17	129.95	Bull	127.91	~ 128.61	129.31	~ 129.53	130.45	131.37	~ 131.58	132.29	~ 132.99				

EUR/USD										Demark										Pivot										Fibonacci Zone				
日足	Open	High	Low	Close	値幅/日	引け形態	真の高値	真の安値	予想高値	予想安値	予想高値	予想安値	StopLoss	Support	Pivot	Resistance	StopLoss	3-days AVG	Support Zone 2	Support Zone 1	BP	Resistance Zone 1	Resistance Zone 2											
													LBOP	S2	S1	PP	R1	R2	HBOP															
2017/07/31	1.1755	1.1846	1.1724	1.1836	122p	陽線引け	-	-	-	-	-	-	1.1635	1.1679	1.1758	1.1802	1.1880	1.1924	1.2002															
2017/08/01	1.1836	1.1839	1.1788	1.1806	51p	陽線引け	1.1839	1.1788	1.1822	1.1772	1.1822	1.1772	1.1732	1.1760	1.1783	1.1811	1.1834	1.1861	1.1884															
2017/08/02	1.1806	1.1910	1.1794	1.1855	116p	陽線引け	1.1910	1.1794	1.1941	1.1825	1.1941	1.1825	1.1680	1.1737	1.1796	1.1853	1.1912	1.1969	1.2029	1.1822	Bull	1.1693	~ 1.1737	1.1781	~ 1.1795	1.1853	1.1911	~ 1.1925	1.1969	~ 1.2014				
2017/08/03	1.1855	1.1893	1.1831	1.1871	62p	陽線引け	1.1893	1.1831	1.1913	1.1851	1.1913	1.1851	1.1775	1.1803	1.1837	1.1865	1.1899	1.1927	1.1961	1.1843	Bull	1.1779	~ 1.1803	1.1826	~ 1.1834	1.1865	1.1896	~ 1.1903	1.1927	~ 1.1951				
2017/08/04	1.1871	1.1889	1.1731	1.1780	158p	陽線引け	1.1889	1.1731	1.1834	1.1677	1.1834	1.1677	1.1553	1.1642	1.1711	1.1800	1.1869	1.1958	1.2027	1.1839	Bear	1.1582	~ 1.1642	1.1703	~ 1.1721	1.1800	1.1879	~ 1.1898	1.1958	~ 1.2018				
週足	Open	High	Low	Close	値幅/週	引け形態	真の高値	真の安値	予想高値	予想安値	予想高値	予想安値	LBOP	S2	S1	PP	R1	R2	HBOP	3-days AVG	Support Zone 2	Support Zone 1	BP	Resistance Zone 1	Resistance Zone 2									
2017/07/10 ~ 2017/07/14	1.1399	1.1489	1.1371	1.1470	119p	陽線引け	-	-	-	-	-	-	1.1279	1.1325	1.1397	1.1443	1.1516	1.1562	1.1635															
2017/07/17 ~ 2017/07/21	1.1471	1.1683	1.1435	1.1668	248p	陽線引け	1.1683	1.1435	1.1832	1.1519	1.1799	1.1552	1.1260	1.1347	1.1508	1.1595	1.1756	1.1843	1.2004															
2017/07/24 ~ 2017/07/28	1.1667	1.1777	1.1614	1.1759	163p	陽線引け	1.1777	1.1614	1.1849	1.1686	1.1849	1.1686	1.1493	1.1553	1.1656	1.1716	1.1819	1.1879	1.1982	1.1585	Bull	1.1491	~ 1.1553	1.1616	~ 1.1635	1.1716	1.1798	~ 1.1817	1.1879	~ 1.1942				
2017/07/31 ~ 2017/08/04	1.1755	1.1910	1.1724	1.1780	187p	陽線引け	1.1910	1.1724	1.1938	1.1752	1.1938	1.1752	1.1512	1.1618	1.1699	1.1804	1.1885	1.1991	1.2072	1.1705	Bull	1.1547	~ 1.1618	1.1689	~ 1.1711	1.1804	1.1898	~ 1.1920	1.1991	~ 1.2062				

GBP/JPY										Demark										Pivot										Fibonacci Zone				
日足	Open	High	Low	Close	値幅/日	引け形態	真の高値	真の安値	予想高値	予想安値	予想高値	予想安値	StopLoss	Support	Pivot	Resistance	StopLoss	3-days AVG	Support Zone 2	Support Zone 1	BP	Resistance Zone 1	Resistance Zone 2											
													LBOP	S2	S1	PP	R1	R2	HBOP															
2017/07/31	145.36	145.83	144.83	145.61	100p	陽線引け	-	-	-	-	-	-	144.01	144.42	145.02	145.42	146.02	146.43	147.02															
2017/08/01	145.63	146.17	145.41	145.78	76p	陽線引け	146.17	145.41	146.36	145.60	146.36	145.60	144.64	145.03	145.41	145.79	146.17	146.55	146.93															
2017/08/02	145.80	146.76	145.73	146.46	103p	陽線引け	146.76	145.73	147.12	146.10	147.12	146.10	144.85	145.29	145.88	146.32	146.90	147.34	147.93	145.84	Bull	144.90	~ 145.29	145.68	~ 14									

IMM扱い8通貨/ダウ/日経/金/オイル/主要クロス円の過去5日及び過去5週の4本値

AUDUSD 5					CADUSD 5					CHFUSD 5				
Date	Open	High	Low	Close	Date	Open	High	Low	Close	Date	Open	High	Low	Close
2017/08/04	0.7951	0.7980	0.7892	0.7931	2017/08/04	0.7947	0.7964	0.7894	0.7905	2017/08/04	1.0327	1.0340	1.0242	1.0279
2017/08/03	0.7967	0.7967	0.7915	0.7951	2017/08/03	0.7957	0.7966	0.7925	0.7947	2017/08/03	1.0306	1.0339	1.0291	1.0327
2017/08/02	0.7970	0.7993	0.7942	0.7967	2017/08/02	0.7975	0.7979	0.7942	0.7957	2017/08/02	1.0359	1.0363	1.0295	1.0305
2017/08/01	0.8001	0.8043	0.7961	0.7970	2017/08/01	0.8007	0.8031	0.7967	0.7975	2017/08/01	1.0343	1.0382	1.0327	1.0359
2017/07/31	0.7984	0.8004	0.7957	0.8001	2017/07/31	0.8040	0.8043	0.7983	0.8006	2017/07/31	1.0314	1.0376	1.0296	1.0343

CNYUSD 5					EURUSD 5					GBPUSD 5				
Date	Open	High	Low	Close	Date	Open	High	Low	Close	Date	Open	High	Low	Close
2017/08/04	0.1487	0.1488	0.1487	0.1487	2017/08/04	1.1871	1.1889	1.1731	1.1780	2017/08/04	1.3137	1.3164	1.3024	1.3047
2017/08/03	0.1486	0.1487	0.1484	0.1487	2017/08/03	1.1855	1.1893	1.1831	1.1871	2017/08/03	1.3226	1.3266	1.3113	1.3138
2017/08/02	0.1486	0.1487	0.1485	0.1486	2017/08/02	1.1806	1.1910	1.1794	1.1855	2017/08/02	1.3209	1.3251	1.3192	1.3226
2017/08/01	0.1486	0.1489	0.1486	0.1487	2017/08/01	1.1836	1.1839	1.1788	1.1806	2017/08/01	1.3208	1.3244	1.3191	1.3209
2017/07/31	0.1485	0.1487	0.1484	0.1486	2017/07/31	1.1755	1.1846	1.1724	1.1836	2017/07/31	1.3136	1.3225	1.3098	1.3207

JPYUSD 5					MXNUSD 5					NZDUSD 5				
Date	Open	High	Low	Close	Date	Open	High	Low	Close	Date	Open	High	Low	Close
2017/08/04	0.9093	0.9104	0.9005	0.9035	2017/08/04	5.5963	5.6177	5.5851	5.5966	2017/08/04	0.7437	0.7455	0.7393	0.7416
2017/08/03	0.9030	0.9102	0.9023	0.9093	2017/08/03	5.6137	5.6208	5.5895	5.5976	2017/08/03	0.7430	0.7451	0.7391	0.7437
2017/08/02	0.9060	0.9067	0.9010	0.9030	2017/08/02	5.5850	5.6227	5.5666	5.6046	2017/08/02	0.7471	0.7474	0.7411	0.7430
2017/08/01	0.9070	0.9096	0.9042	0.9061	2017/08/01	5.6286	5.6331	5.5959	5.5991	2017/08/01	0.7511	0.7525	0.7462	0.7471
2017/07/31	0.9037	0.9073	0.9028	0.9070	2017/07/31	5.6226	5.6244	5.5892	5.6193	2017/07/31	0.7503	0.7523	0.7469	0.7511

Nikkei 225 -Japan (NIX)					出来高	
Date	Open	High	Low	Close	(ドル建て終値)	出来高
2017/08/04	19949.79	19984.51	19933.59	19952.33	181.25	0 1515003200
2017/08/03	20066.00	20070.16	19985.40	20029.26	181.03	921118208 1680632700
2017/08/02	20057.07	20113.73	20022.05	20080.04	181.28	986340608 1718452600
2017/08/01	19907.08	20000.46	19904.72	19985.79	181.36	1134555136 1944533800
2017/07/31	19933.45	19983.90	19891.90	19925.18	180.12	1446448512 2334558900
週4本値	19933.45	20113.73	19891.90	19952.33	181.25	(N225銘柄計)【東証一部全体計】

XAUUSD 5				
Date	Open	High	Low	Close
2017/08/04	1268.83	1270.21	1254.40	1258.82
2017/08/03	1266.70	1270.87	1257.24	1267.92
2017/08/02	1269.10	1272.89	1262.97	1266.65
2017/08/01	1269.62	1274.00	1262.80	1268.66
2017/07/31	1270.35	1271.15	1265.84	1269.40
週4本値	1270.35	1274.00	1254.40	1258.82

Dow Jones Industrial - USA (DJIA)					出来高
Date	Open	High	Low	Close	出来高
2017/08/04	22058.39	22092.81	22024.64	22092.81	253635270
2017/08/03	22007.58	22044.85	21991.32	22026.10	278731064
2017/08/02	22004.36	22036.10	21967.46	22016.24	336824836
2017/08/01	21961.42	21990.96	21940.81	21963.92	328405532
2017/07/31	21863.39	21929.80	21861.71	21891.12	307611007
週4本値	21863.39	22092.81	21861.71	22092.81	253635270

Historical Data by **Stooq**
 Historical Data by **MarketNewsline**
 (ダウと日経)
 Arrangement by **FX_勝てば官軍?**

Crude Light Oil 5					
Date	Open	High	Low	Close	出来高
2017/08/04	48.95	49.64	48.50	49.58	1131159
2017/08/03	49.59	49.96	48.78	49.03	1379470
2017/08/02	48.80	49.65	48.55	49.59	1420393
2017/08/01	50.21	50.43	48.37	49.16	1694138
2017/07/31	49.85	50.41	49.18	50.17	1431841
週4本値	49.85	50.43	48.37	49.58	

USDJPY 5					EURJPY 5					GBPJPY 5				
日付	始値	高値	安値	終値	日付	始値	高値	安値	終値	日付	始値	高値	安値	終値
2017/08/04	109.98	111.05	109.85	110.69	2017/08/04	130.55	131.11	130.10	130.39	2017/08/04	144.48	145.30	144.24	144.41
2017/08/03	110.74	110.83	109.87	109.98	2017/08/03	131.28	131.33	130.47	130.55	2017/08/03	146.46	146.79	144.40	144.49
2017/08/02	110.38	110.99	110.29	110.74	2017/08/02	130.31	131.40	130.27	131.29	2017/08/02	145.80	146.76	145.73	146.46
2017/08/01	110.26	110.59	109.94	110.37	2017/08/01	130.50	130.61	129.86	130.30	2017/08/01	145.63	146.17	145.41	145.78
2017/07/31	110.66	110.76	110.21	110.25	2017/07/31	130.08	130.60	129.56	130.50	2017/07/31	145.36	145.83	144.83	145.61

USDJPY Weekly 28					EURJPY Weekly 28					GBPJPY Weekly 28				
日付	始値	高値	安値	終値	日付	始値	高値	安値	終値	日付	始値	高値	安値	終値
2017/08/04	110.66	111.05	109.85	110.69	2017/08/04	130.08	131.40	129.56	130.39	2017/08/04	145.36	146.79	144.24	144.41
2017/07/28	111.14	112.19	110.55	110.58	2017/07/28	129.67	130.60	128.88	130.03	2017/07/28	144.43	146.56	144.03	145.40
2017/07/21	112.49	112.87	111.02	111.10	2017/07/21	129.03	130.51	128.58	129.63	2017/07/21	147.44	147.61	144.07	144.37
2017/07/14	114.03	114.50	112.28	112.55	2017/07/14	129.99	130.77	128.51	129.09	2017/07/14	146.94	147.77	145.28	147.52
2017/07/07	112.22	114.18	112.20	113.90	2017/07/07	128.18	130.13	128.01	129.88	2017/07/07	146.10	147.62	145.91	146.75

先週のIMM取り扱い対ドル8通貨チャート

※ 赤点線は週最高値/青天線は週最低値、BB中心線はSMA21

2017/07/31 ~ 2017/08/04

Chart by OANDA Japan MetaTrader4



Pivot Maker Ver 3.0 by FX_勝てば官軍?

<http://fx.najirane.com>