

JAPANESE YEN - CHICAGO MERCANTILE EXCHANGE
2017/04/25 ~ 2017/10/17

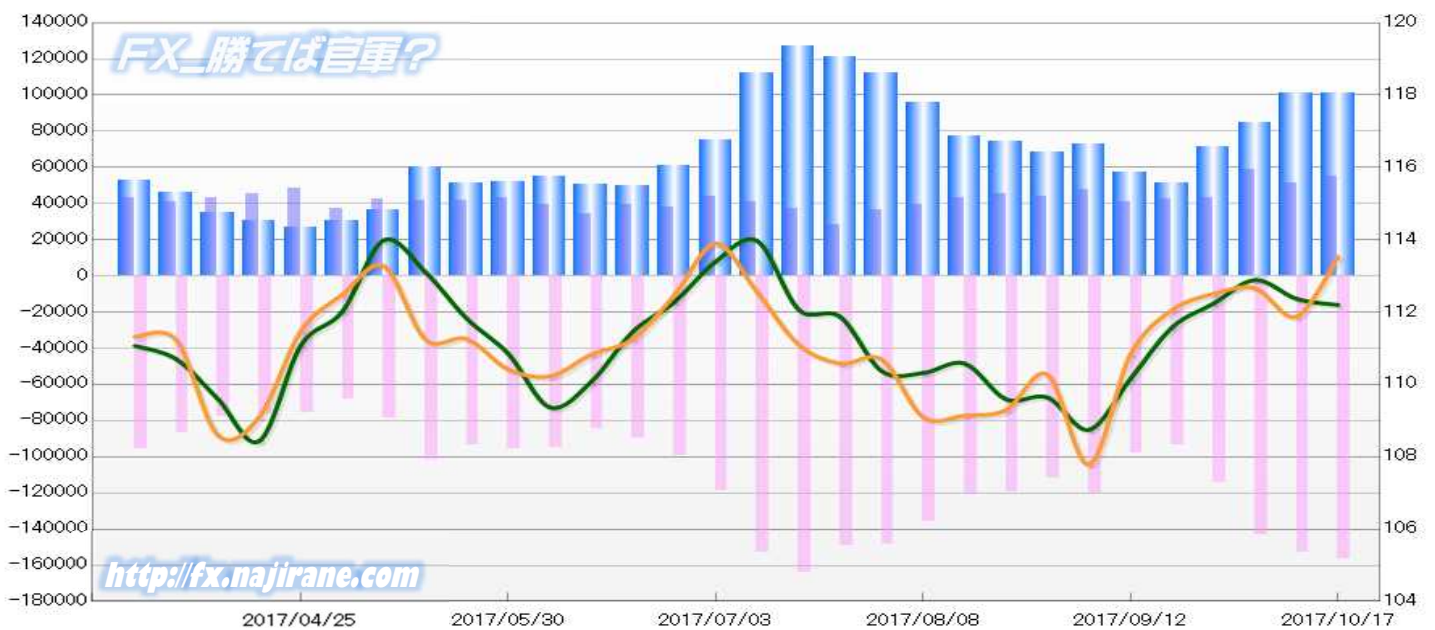
Code-097741

2017/10/20 NYクローズ時公表値

Report_Date	Non Commercial Positions												火曜日 引け値	金曜日 引け値
	Long	増減	増減(%)	Short	増減	増減(%)	売り越し	増減	増減(%)	売買計	増減	増減(%)		
2017/10/17	55010	3355	6.5%	156296	3222	2.1%	101286	-133	-0.1%	211306	6577	3.2%	112.20	113.53
2017/10/10	51655	-7115	-12.1%	153074	9661	6.7%	101419	16776	19.8%	204729	2546	1.3%	112.37	111.88
2017/10/03	58770	15807	36.8%	143413	29103	25.5%	84643	13296	18.6%	202183	44910	28.6%	112.89	112.66
2017/09/26	42963	528	1.2%	114310	20553	21.9%	71347	20025	39.0%	157273	21081	15.5%	112.24	112.51
2017/09/19	42435	1793	4.4%	93757	-4182	-4.3%	51322	-5975	-10.4%	136192	-2389	-1.7%	111.58	112.06
2017/09/12	40642	-6643	-14.0%	97939	-22291	-18.5%	57297	-15648	-21.5%	138581	-28934	-17.3%	110.16	110.84
2017/09/05	47285	3396	7.7%	120230	7817	7.0%	72945	4421	6.5%	167515	11213	7.2%	108.75	107.79
2017/08/29	43889	-1273	-2.8%	112413	-6835	-5.7%	68524	-5562	-7.5%	156302	-8108	-4.9%	109.64	110.27
2017/08/22	45162	1854	4.3%	119248	-1552	-1.3%	74086	-3406	-4.4%	164410	302	0.2%	109.59	109.30
2017/08/15	43308	3498	8.8%	120800	-14823	-10.9%	77492	-18321	-19.1%	164108	-11325	-6.5%	110.58	109.14
2017/08/08	39810	3365	9.2%	135623	-13018	-8.8%	95813	-16383	-14.6%	175433	-9653	-5.2%	110.32	109.10
2017/08/01	36445	8427	30.1%	148641	-866	-0.6%	112196	-9293	-7.6%	185086	7561	4.3%	110.37	110.69
2017/07/25	28018	-9401	-25.1%	149507	-14831	-9.0%	121489	-5430	-4.3%	177525	-24232	-12.0%	111.87	110.58
2017/07/18	37419	-3359	-8.2%	164338	11435	7.5%	126919	14794	13.2%	201757	8076	4.2%	112.07	111.10
2017/07/11	40778	-2870	-6.6%	152903	34219	28.8%	112125	37089	49.4%	193681	31349	19.3%	113.97	112.55
2017/07/03	43648	5394	14.1%	118684	19080	19.2%	75036	13686	22.3%	162332	24474	17.8%	113.40	113.90
2017/06/27	38254	-1244	-3.1%	99604	10147	11.3%	61350	11391	22.8%	137858	8903	6.9%	112.28	112.47
2017/06/20	39498	5338	15.6%	89457	4744	5.6%	49959	-594	-1.2%	128955	10082	8.5%	111.46	111.26
2017/06/13	34160	-5576	-14.0%	84713	-10050	-10.6%	50553	-4474	-8.1%	118873	-15626	-11.6%	110.08	110.83
2017/06/06	39736	-3668	-8.5%	94763	-916	-1.0%	55027	2752	5.3%	134499	-4584	-3.3%	109.37	110.23
2017/05/30	43404	1484	3.5%	95679	2103	2.2%	52275	619	1.2%	139083	3587	2.6%	110.85	110.42
2017/05/23	41920	-43	-0.1%	93576	-8395	-8.2%	51656	-8352	-13.9%	135496	-8438	-5.9%	111.82	111.26
2017/05/16	41963	-672	-1.6%	101971	23029	29.2%	60008	23701	65.3%	143934	22357	18.4%	113.11	111.25
2017/05/09	42635	5116	13.6%	78942	10940	16.1%	36307	5824	19.1%	121577	16056	15.2%	113.99	113.27
2017/05/02	37519	-11019	-22.7%	68002	-7405	-9.8%	30483	3614	13.5%	105521	-18424	-14.9%	112.02	112.49
2017/04/25	48538			75407			26869			123945			111.08	111.48

JAPANESE YEN - CHICAGO MERCANTILE EXCHANGE
FUTURES ONLY POSITIONS

— 金曜終値 — 火曜終値 — Short枚数 — Long枚数 — 売り越し枚数(マイナスの場合は買越しと読替え)



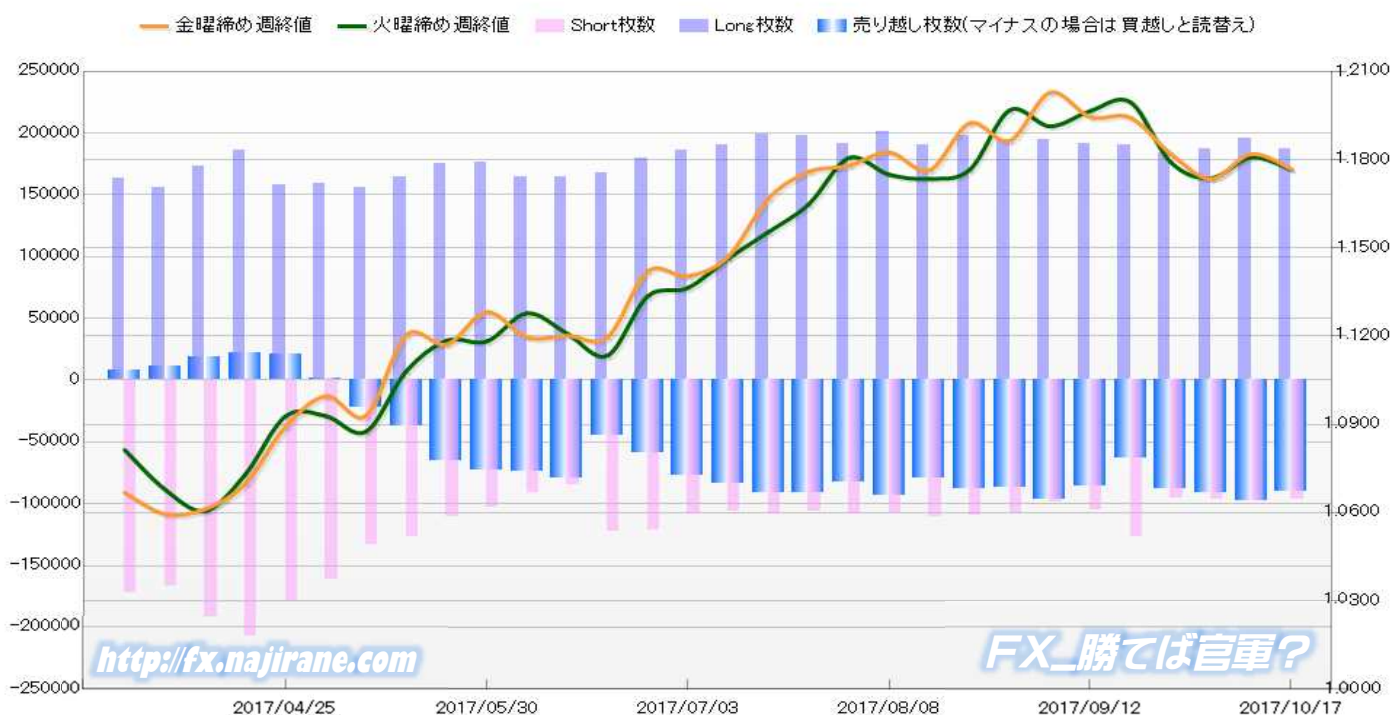
EURO FX - CHICAGO MERCANTILE EXCHANGE
2017/04/25 ~ 2017/10/17

Code-099741

2017/10/20 NYクローズ時公表値

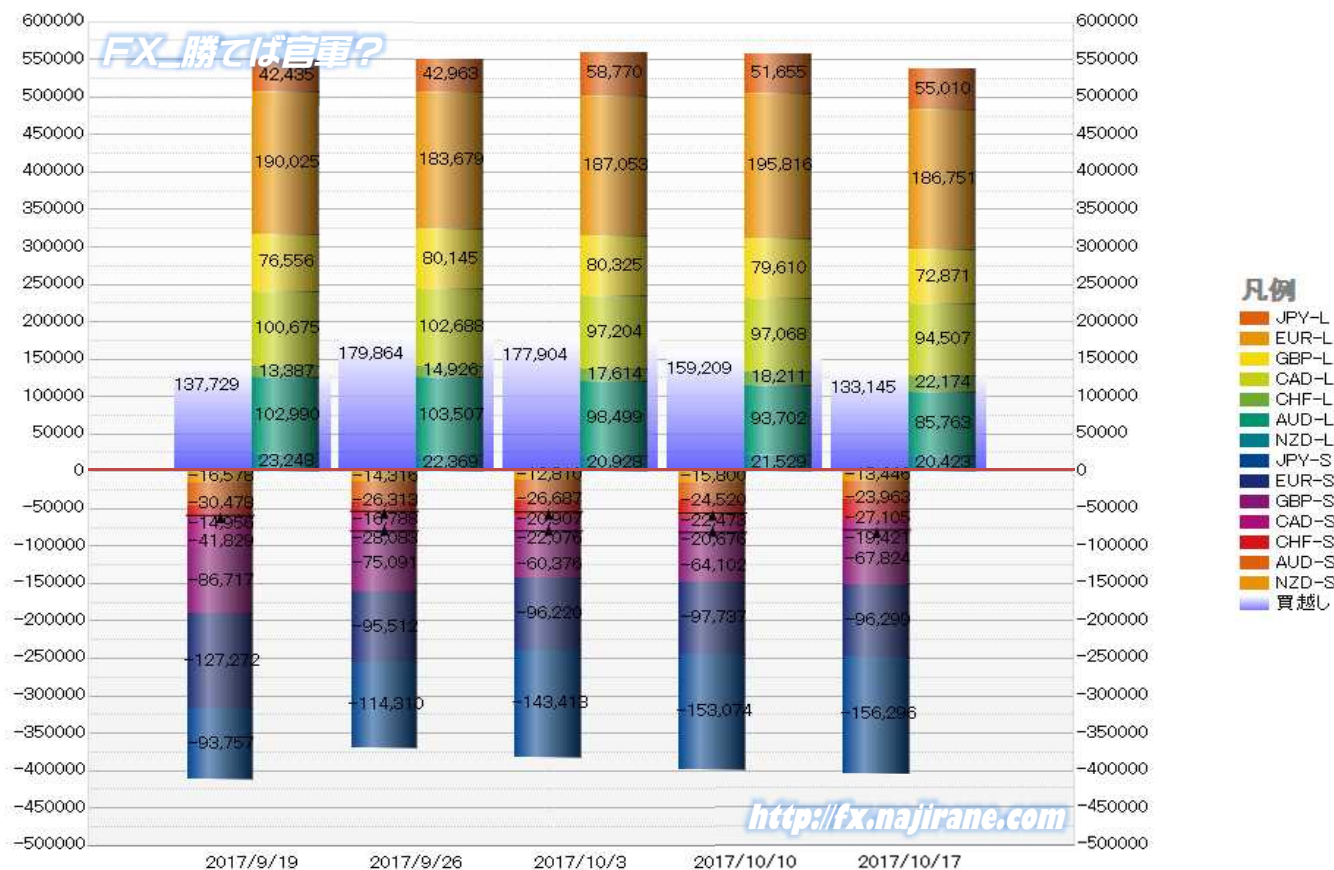
Report_Date	Non Commercial Positions									火曜日 引け値	金曜日 引け値			
	Long	増減	Short	増減	売り越し	増減	売買計	増減						
2017/10/17	186751	-9065	-4.6%	96299	-1438	-1.5%	-90452	-7627	-7.8%	283050	-10503	-3.6%	1.1766	1.1768
2017/10/10	195816	8763	4.7%	97737	1517	1.6%	-98079	7246	8.0%	293553	10280	3.6%	1.1808	1.1819
2017/10/03	187053	3374	1.8%	96220	708	0.7%	-90833	2666	3.0%	283273	4082	1.5%	1.1737	1.1735
2017/09/26	183679	-6346	-3.3%	95512	-31760	-25.0%	-88167	25414	40.5%	279191	-38106	###	1.1791	1.1820
2017/09/19	190025	-1077	-0.6%	127272	22228	21.2%	-62753	-23305	-27.1%	317297	21151	7.1%	1.1995	1.1943
2017/09/12	191102	-3874	-2.0%	105044	6377	6.5%	-86058	-10251	-10.6%	296146	2503	0.9%	1.1965	1.1945
2017/09/05	194976	645	0.3%	98667	-9145	-8.5%	-96309	9790	11.3%	293643	-8500	-2.8%	1.1914	1.2028
2017/08/29	194331	-3487	-1.8%	107812	-2030	-1.8%	-86519	-1457	-1.7%	302143	-5517	-1.8%	1.1968	1.1865
2017/08/22	197818	7482	3.9%	109842	-1227	-1.1%	-87976	8709	11.0%	307660	6255	2.1%	1.1765	1.1924
2017/08/15	190336	-10895	-5.4%	111069	3523	3.3%	-79267	-14418	-15.4%	301405	-7372	-2.4%	1.1735	1.1764
2017/08/08	201231	9754	5.1%	107546	-1294	-1.2%	-93685	11048	13.4%	308777	8460	2.8%	1.1749	1.1825
2017/08/01	191477	-6179	-3.1%	108840	2026	1.9%	-82637	-8205	-9.0%	300317	-4153	-1.4%	1.1806	1.1780
2017/07/25	197656	-1884	-0.9%	106814	-1405	-1.3%	-90842	-479	-0.5%	304470	-3289	-1.1%	1.1648	1.1759
2017/07/18	199540	9273	4.9%	108219	1740	1.6%	-91321	7533	9.0%	307759	11013	3.7%	1.1554	1.1668
2017/07/11	190267	4342	2.3%	106479	-1982	-1.8%	-83788	6324	8.2%	296746	2360	0.8%	1.1465	1.1470
2017/07/03	185925	6254	3.5%	108461	-12515	-10.3%	-77464	18769	32.0%	294386	-6261	-2.1%	1.1364	1.1404
2017/06/27	179671	12426	7.4%	120976	-1417	-1.2%	-58695	13843	30.9%	300647	11009	3.8%	1.1336	1.1421
2017/06/20	167245	3018	1.8%	122393	37219	43.7%	-44852	-34201	-43.3%	289638	40237	16.1%	1.1134	1.1197
2017/06/13	164227	-662	-0.4%	85174	-5706	-6.3%	-79053	5044	6.8%	249401	-6368	-2.5%	1.1209	1.1201
2017/06/06	164889	-11337	-6.4%	90880	-12477	-12.1%	-74009	1140	1.6%	255769	-23814	-8.5%	1.1278	1.1196
2017/05/30	176226	1194	0.7%	103357	-6830	-6.2%	-72869	8024	12.4%	279583	-5636	-2.0%	1.1182	1.1282
2017/05/23	175032	10798	6.6%	110187	-16443	-13.0%	-64845	27241	72.4%	285219	-5645	-1.9%	1.1185	1.1172
2017/05/16	164234	8653	5.6%	126630	-6552	-4.9%	-37604	15205	67.9%	290864	2101	0.7%	1.1081	1.1204
2017/05/09	155581	-3837	-2.4%	133182	-27889	-17.3%	-22399	-24052	-1455.1%	288763	-31726	-9.9%	1.0876	1.0930
2017/05/02	159418	1587	1.0%	161071	-17655	-9.9%	1653	-19242	-92.1%	320489	-16068	-4.8%	1.0929	1.0996
2017/04/25	157831			178726			20895			336557			1.0928	1.0892

EURO FX - CHICAGO MERCANTILE EXCHANGE
FUTURES ONLY POSITIONS



	2017/09/19			2017/09/26			2017/10/03			2017/10/10			2017/10/17		
	Long	Short	売り越し	Long	Short	売り越し	Long	Short	売り越し	Long	Short	売り越し	Long	Short	売り越し
JPY	42435	93757	51322	42963	114310	71347	58770	143413	84643	51655	153074	101419	55010	156296	101286
	前週比 枚数増減 (枚)			528	20553	20025	15807	29103	13296	-7115	9661	16776	3355	3222	-133
	前週比 枚数増減 (%)			1.2%	21.9%	39.0%	36.8%	25.5%	18.6%	-12.1%	6.7%	19.8%	6.5%	2.1%	-0.1%
EUR	190025	127272	-62753	183679	95512	-88167	187053	96220	-90833	195816	97737	-98079	186751	96299	-90452
	前週比 枚数増減 (枚)			-6346	-31760	25414	3374	708	2666	8763	1517	7246	-9065	-1438	-7627
	前週比 枚数増減 (%)			-3.3%	-25.0%	40.5%	1.8%	0.7%	3.0%	4.7%	1.6%	8.0%	-4.6%	-1.5%	-7.8%
GBP	76556	86717	10161	80145	75091	-5054	80325	60376	-19949	79610	64102	-15508	72871	67824	-5047
	前週比 枚数増減 (枚)			3589	-11626	-5107	180	-14715	14895	-715	3726	-4441	-6739	3722	-10461
	前週比 枚数増減 (%)			4.7%	-13.4%	-149.7%	0.2%	-19.6%	294.7%	-0.9%	6.2%	-22.3%	-8.5%	5.8%	-67.5%
AUD	102990	30478	-72512	103507	26313	-77194	98499	26687	-71812	93702	24520	-69182	85763	23963	-61800
	前週比 枚数増減 (枚)			517	-4165	4682	-5008	374	-5382	-4797	-2167	-2630	-7939	-557	-7382
	前週比 枚数増減 (%)			0.5%	-13.7%	6.5%	-4.8%	1.4%	-7.0%	-4.9%	-8.1%	-3.7%	-8.5%	-2.3%	-10.7%
CAD	100675	41829	-58846	102688	28083	-74605	97204	22076	-75128	97068	20676	-76392	94507	19421	-75086
	前週比 枚数増減 (枚)			2013	-13746	15759	-5484	-6007	523	-136	-1400	1264	-2561	-1255	-1306
	前週比 枚数増減 (%)			2.0%	-32.9%	26.8%	-5.3%	-21.4%	0.7%	-0.1%	-6.3%	1.7%	-2.6%	-6.1%	-1.7%
CHF	13387	14956	1569	14926	16788	1862	17614	20907	3293	18211	22473	4262	22174	27105	4931
	前週比 枚数増減 (枚)			1539	1832	293	2688	4119	1431	597	1566	969	3963	4632	669
	前週比 枚数増減 (%)			11.5%	12.2%	18.7%	18.0%	24.5%	76.9%	3.4%	7.5%	29.4%	21.8%	20.6%	15.7%
NZD	23248	16578	-6670	22369	14316	-8053	20928	12810	-8118	21529	15800	-5729	20423	13446	-6977
	前週比 枚数増減 (枚)			-879	-2262	1383	-1441	-1506	65	601	2990	-2389	-1106	-2354	1248
	前週比 枚数増減 (%)			-3.8%	-13.6%	20.7%	-6.4%	-10.5%	0.8%	2.9%	23.3%	-29.4%	-5.1%	-14.9%	21.8%
MXN	136338	59386	-76952	134621	50894	-83727	117452	28336	-89116	102473	19724	-82749	98936	27869	-71067
	前週比 枚数増減 (枚)			-1717	-8492	6775	-17169	-22558	5389	-14979	-8612	-6367	-3537	8145	-11682
	前週比 枚数増減 (%)			-1.3%	-14.3%	8.8%	-12.8%	-44.3%	6.4%	-12.8%	-30.4%	-7.1%	-3.5%	41.3%	-14.1%
Total All 8	685654	470973	-214681	684898	421307	-263591	677845	410825	-267020	660064	418106	-241958	636435	432223	-204212
	前週比 枚数増減 (枚)			-756	-49666	48910	-7053	-10482	3429	-17781	7281	-25062	-23629	14117	-37746
	前週比 枚数増減 (%)			-0.1%	-10.5%	22.8%	-1.0%	-2.5%	1.3%	-2.6%	1.8%	-9.4%	-3.6%	3.4%	-15.6%
Total 7 (MXN除)	549316	411587	-137729	550277	370413	-179864	560393	382489	-177904	557591	398382	-159209	537499	404354	-133145
	前週比 枚数増減 (枚)			961	-41174	42135	10116	12076	-1960	-2802	15893	-18695	-20092	5972	-26064
	前週比 枚数増減 (%)			0.2%	-10.0%	30.6%	1.8%	3.3%	-1.1%	-0.5%	4.2%	-10.5%	-3.6%	1.5%	-16.4%

直近5週 CFTC IMM主要7通貨の構成

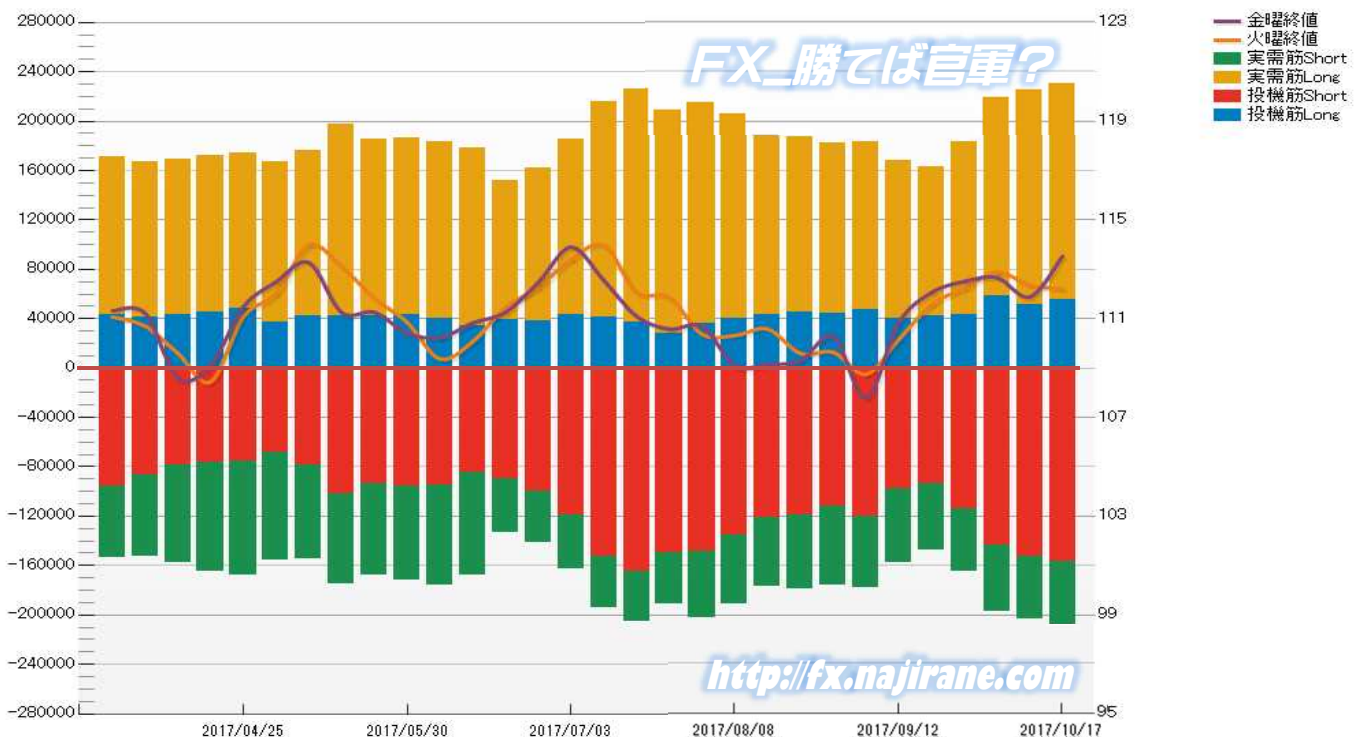


JAPANESE YEN - CHICAGO MERCANTILE EXCHANGE
FUTURES ONLY POSITIONS

Code-097741
2017/10/20 公表値

Date	投機筋集計				実需筋集計				投機筋+実需筋合計				ドル円終値	
	円買い	円売り	売り越し	売買計	円買い	円売り	売り越し	売買計	円買い	円売り	売り越し	売買計	火曜締め	金曜締め
2017/10/17	55010	156296	101286	211306	174720	51833	-122887	226553	229730	208129	-21601	437859	112.20	113.53
2017/10/10	51655	153074	101419	204729	173289	49943	-123346	223232	224944	203017	-21927	427961	112.37	111.88
2017/10/03	58770	143413	84643	202183	160230	53797	-106433	214027	219000	197210	-21790	416210	112.89	112.66
2017/09/26	42963	114310	71347	157273	140482	50047	-90435	190529	183445	164357	-19088	347802	112.24	112.51
2017/09/19	42435	93757	51322	136192	120365	53357	-67008	173722	162800	147114	-15686	309914	111.58	112.06
2017/09/12	40642	97939	57297	138581	127392	59890	-67502	187282	168034	157829	-10205	325863	110.16	110.84
2017/09/05	47285	120230	72945	167515	136437	58205	-78232	194642	183722	178435	-5287	362157	108.75	107.79
2017/08/29	43889	112413	68524	156302	138466	63262	-75204	201728	182355	175675	-6680	358030	109.64	110.27
2017/08/22	45162	119248	74086	164410	142448	59657	-82791	202105	187610	178905	-8705	366515	109.59	109.30
2017/08/15	43308	120800	77492	164108	145227	56054	-89173	201281	188535	176854	-11681	365389	110.58	109.14
2017/08/08	39810	135623	95813	175433	165991	55822	-110169	221813	205801	191445	-14356	397246	110.32	109.10
2017/08/01	36445	148641	112196	185086	178378	53446	-124932	231824	214823	202087	-12736	416910	110.37	110.69
2017/07/25	28018	149507	121489	177525	180207	41743	-138464	221950	208225	191250	-16975	399475	111.87	110.58
2017/07/18	37419	164338	126919	201757	188763	41117	-147646	229880	226182	205455	-20727	431637	112.07	111.10
2017/07/11	40778	152903	112125	193681	174866	41714	-133152	216580	215644	194617	-21027	410261	113.97	112.55
2017/07/03	43648	118684	75036	162332	141824	43641	-98183	185465	185472	162325	-23147	347797	113.40	113.90
2017/06/27	38254	99604	61350	137858	123453	41443	-82010	164896	161707	141047	-20660	302754	112.28	112.47
2017/06/20	39498	89457	49959	128955	112255	44243	-68012	156498	151753	133700	-18053	285453	111.46	111.26
2017/06/13	34160	84713	50553	118873	144233	83337	-60896	227570	178393	168050	-10343	346443	110.08	110.83
2017/06/06	39736	94763	55027	134499	143746	81444	-62302	225190	183482	176207	-7275	359689	109.37	110.23
2017/05/30	43404	95679	52275	139083	143450	76426	-67024	219876	186854	172105	-14749	358959	110.85	110.42
2017/05/23	41920	93576	51656	135496	143304	74467	-68837	217771	185224	168043	-17181	353267	111.82	111.26
2017/05/16	41963	101971	60008	143934	155071	72713	-82358	227784	197034	174684	-22350	371718	113.11	111.25
2017/05/09	42635	78942	36307	121577	133992	76099	-57893	210091	176627	155041	-21586	331668	113.99	113.27
2017/05/02	37519	68002	30483	105521	129521	87402	-42119	216923	167040	155404	-11636	322444	112.02	112.49
2017/04/25	48538	75407	26869	123945	125796	91994	-33802	217790	174334	167401	-6933	341735	111.08	111.48
2017/04/18	45761	76224	30463	121985	126595	88467	-38128	215062	172356	164691	-7665	337047	108.44	109.11
2017/04/11	43316	78080	34764	121396	125340	79941	-45399	205281	168656	158021	-10635	326677	109.60	108.60
2017/04/04	41313	87113	45800	128426	126068	65862	-60206	191930	167381	152975	-14406	320356	110.70	111.22
2017/03/28	42886	96067	53181	138953	128200	57371	-70829	185571	171086	153438	-17648	324524	111.07	111.32

JAPANESE YEN - CHICAGO MERCANTILE EXCHANGE
FUTURES ONLY POSITIONS Code-097741

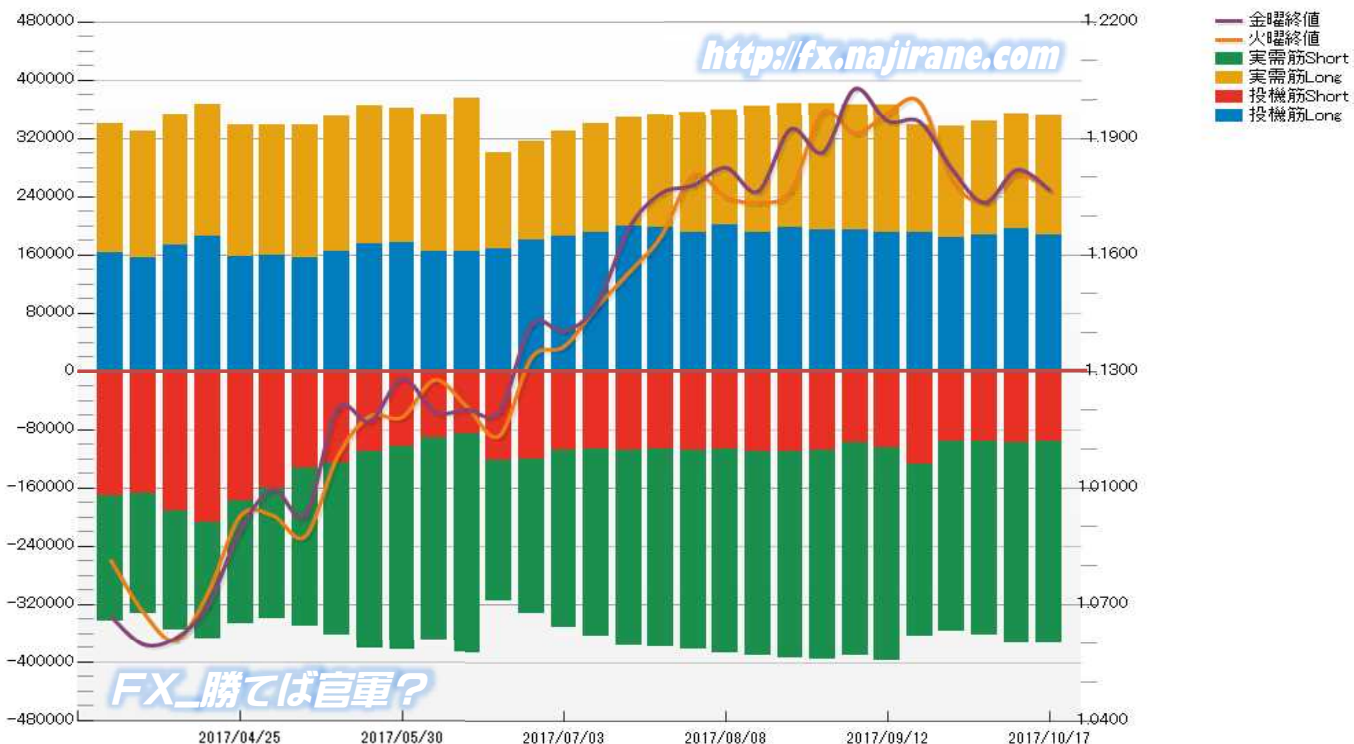


EURO FX - CHICAGO MERCANTILE EXCHANGE
FUTURES ONLY POSITIONS

Code-099741
2017/10/20 公表値

Date	投機筋集計				実需筋集計				投機筋+実需筋合計				ユーロドル終値	
	EUR買い	EUR売り	売り越し	売買計	EUR買い	EUR売り	売り越し	売買計	EUR買い	EUR売り	売り越し	売買計	火曜締め	金曜締め
2017/10/17	186751	96299	-90452	283050	165127	276217	111090	441344	351878	372516	20638	724394	1.1766	1.1768
2017/10/10	195816	97737	-98079	293553	158660	275104	116444	433764	354476	372841	18365	727317	1.1808	1.1819
2017/10/03	187053	96220	-90833	283273	157203	266511	109308	423714	344256	362731	18475	706987	1.1737	1.1735
2017/09/26	183679	95512	-88167	279191	152592	261208	108616	413800	336271	356720	20449	692991	1.1791	1.1820
2017/09/19	190025	127272	-62753	317297	149288	236626	87338	385914	339313	363898	24585	703211	1.1995	1.1943
2017/09/12	191102	105044	-86058	296146	175600	291785	116185	467385	366702	396829	30127	763531	1.1965	1.1945
2017/09/05	194976	98667	-96309	293643	171223	291891	120668	463114	366199	390558	24359	756757	1.1914	1.2028
2017/08/29	194331	107812	-86519	302143	173410	287170	113760	460580	367741	394982	27241	762723	1.1968	1.1865
2017/08/22	197818	109842	-87976	307660	169989	284515	114526	454504	367807	394357	26550	762164	1.1765	1.1924
2017/08/15	190336	111069	-79267	301405	174177	278546	104369	452723	364513	389615	25102	754128	1.1735	1.1764
2017/08/08	201231	107546	-93685	308777	157833	279623	121790	437456	359064	387169	28105	746233	1.1749	1.1825
2017/08/01	191477	108840	-82637	300317	164304	272865	108561	437169	355781	381705	25924	737486	1.1806	1.1780
2017/07/25	197656	106814	-90842	304470	155560	271095	115535	426655	353216	377909	24693	731125	1.1648	1.1759
2017/07/18	199540	108219	-91321	307759	150114	268566	118452	418680	349654	376785	27131	726439	1.1554	1.1668
2017/07/11	190267	106479	-83788	296746	150147	258152	108005	408299	340414	364631	24217	705045	1.1465	1.1470
2017/07/03	185925	108461	-77464	294386	144260	244301	100041	388561	330185	352762	22577	682947	1.1364	1.1404
2017/06/27	179671	120976	-58695	300647	136134	211639	75505	347773	315805	332615	16810	648420	1.1336	1.1421
2017/06/20	167245	122393	-44852	289638	132839	192994	60155	325833	300084	315387	15303	615471	1.1134	1.1197
2017/06/13	164227	85174	-79053	249401	211353	301281	89928	512634	375580	386455	10875	762035	1.1209	1.1201
2017/06/06	164889	90880	-74009	255769	188042	279047	91005	467089	352931	369927	16996	722858	1.1278	1.1196
2017/05/30	176226	103357	-72869	279583	185792	279432	93640	465224	362018	382789	20771	744807	1.1182	1.1282
2017/05/23	175032	110187	-64845	285219	190524	272094	81570	462618	365556	382281	16725	747837	1.1185	1.1172
2017/05/16	164234	126630	-37604	290864	186406	236357	49951	422763	350640	362987	12347	713627	1.1081	1.1204
2017/05/09	155581	133182	-22399	288763	183860	217059	33199	400919	339441	350241	10800	689682	1.0876	1.0930
2017/05/02	159418	161071	1653	320489	179781	178953	-828	358734	339199	340024	825	679223	1.0929	1.0996
2017/04/25	157831	178726	20895	336557	181520	167731	-13789	349251	339351	346457	7106	685808	1.0928	1.0892
2017/04/18	185786	207435	21649	393221	179950	159602	-20348	339552	365736	367037	1301	732773	1.0730	1.0699
2017/04/11	173594	192550	18956	366144	179203	163127	-16076	342330	352797	355677	2880	708474	1.0606	1.0612
2017/04/04	155468	166873	11405	322341	173689	166592	-7097	340281	329157	333465	4308	662622	1.0679	1.0595
2017/03/28	163648	171571	7923	335219	177046	171114	-5932	348160	340694	342685	1991	683379	1.0813	1.0668

EURO FX - CHICAGO MERCANTILE EXCHANGE
FUTURES ONLY POSITIONS Code-099741



過去5日及び過去4週の4本値と各種ピボット

2017/10/16 ~ 2017/10/20

USD/JPY										Demark						Pivot						Fibonacci Zone									
当日のOHLCLから計算される翌日の										TD Range Projection						TD pivot points															
日足	Open	High	Low	Close	値幅/日	引け形態	真の高値	真の安値	予想高値	予想安値	予想高値	予想安値	StopLoss	Support	Pivot	Resistance	StopLoss	3-days AVG	Support Zone 2	Support Zone 1	BP	Resistance Zone 1	Resistance Zone 2								
													LBP0P	S2	S1	PP	R1	R2	HBOP												
2017/10/16	111.90	112.29	111.66	112.15	63p	陽線引け	-	-	-	-	-	-	111.14	111.40	111.77	112.03	112.41	112.66	113.04												
2017/10/17	112.15	112.48	112.04	112.20	44p	陽線引け	112.48	112.04	112.56	112.12	112.56	112.12	111.56	111.80	112.00	112.24	112.44	112.68	112.88												
2017/10/18	112.20	113.05	112.14	112.96	91p	陽線引け	113.05	112.14	113.46	112.55	113.46	112.55	111.48	111.81	112.38	112.72	113.29	113.63	114.20	112.33	Bull	111.46	~ 111.81	112.16	~ 112.26	112.72	113.17	~ 113.28	113.63	~ 113.97	
2017/10/19	112.96	113.15	112.32	112.57	83p	陰線引け	113.15	112.32	112.86	112.02	112.86	112.02	111.37	111.84	112.21	112.68	113.04	113.51	113.87	112.54	Bull	111.53	~ 111.84	112.16	~ 112.26	112.68	113.09	~ 113.19	113.51	~ 113.83	
2017/10/20	112.57	113.57	112.52	113.53	105p	陽線引け	113.57	112.52	114.08	113.03	114.08	113.03	111.79	112.15	112.84	113.21	113.90	114.26	114.95	112.87	Bull	111.75	~ 112.15	112.56	~ 112.68	113.21	113.73	~ 113.86	114.26	~ 114.66	
週足	Open	High	Low	Close	値幅/週	引け形態	真の高値	真の安値	予想高値	予想安値	予想高値	予想安値	LBP0P	S2	S1	PP	R1	R2	HBOP	3-days AVG	Support Zone 2	Support Zone 1	BP	Resistance Zone 1	Resistance Zone 2						
2017/09/25 ~ 2017/09/29	112.18	113.25	111.48	112.51	177p	陽線引け	-	-	-	-	-	-	109.80	110.64	111.57	112.41	113.35	114.19	115.12												
2017/10/02 ~ 2017/10/06	112.52	113.44	112.33	112.66	111p	陽線引け	113.44	111.48	114.03	112.07	114.03	112.07	111.06	111.69	112.17	112.81	113.29	113.92	114.40												
2017/10/09 ~ 2017/10/13	112.68	112.83	111.69	111.88	114p	陰線引け	112.83	111.69	112.35	111.22	112.35	111.22	110.31	111.00	111.44	112.13	112.58	113.27	113.71	112.45	Bear	110.56	~ 111.00	111.43	~ 111.57	112.13	112.70	~ 112.83	113.27	~ 113.70	
2017/10/16 ~ 2017/10/20	111.90	113.57	111.66	113.53	191p	陽線引け	113.57	111.66	114.51	112.59	114.51	112.59	110.36	111.01	112.27	112.92	114.18	114.83	116.10	112.62	Bull	110.28	~ 111.01	111.74	~ 111.96	112.92	113.88	~ 114.10	114.83	~ 115.56	

EUR/JPY										Demark						Pivot						Fibonacci Zone									
当日のOHLCLから計算される翌日の										TD Range Projection						TD pivot points															
日足	Open	High	Low	Close	値幅/日	引け形態	真の高値	真の安値	予想高値	予想安値	予想高値	予想安値	StopLoss	Support	Pivot	Resistance	StopLoss	3-days AVG	Support Zone 2	Support Zone 1	BP	Resistance Zone 1	Resistance Zone 2								
													LBP0P	S2	S1	PP	R1	R2	HBOP												
2017/10/16	132.16	132.39	131.68	132.31	71p	陽線引け	-	-	-	-	-	-	131.15	131.41	131.86	132.13	132.57	132.84	133.28												
2017/10/17	132.16	132.37	131.85	132.01	53p	陽線引け	132.37	131.85	132.19	131.67	132.19	131.67	131.25	131.55	131.78	132.08	132.31	132.60	132.83												
2017/10/18	132.01	133.28	131.97	133.20	131p	陽線引け	133.28	131.97	133.90	132.59	133.90	132.59	131.05	131.51	132.36	132.82	133.67	134.13	134.98	132.34	Bull	131.01	~ 131.51	132.01	~ 132.16	132.82	133.47	~ 133.63	134.13	~ 134.63	
2017/10/19	133.21	133.62	132.48	133.35	114p	陽線引け	133.62	132.48	134.06	132.92	134.06	132.92	131.54	132.01	132.68	133.15	133.82	134.29	134.96	132.68	Bull	131.58	~ 132.01	132.45	~ 132.58	133.15	133.72	~ 133.86	134.29	~ 134.73	
2017/10/20	133.35	133.96	133.33	133.61	63p	陽線引け	133.96	133.33	134.10	133.47	134.10	133.47	132.67	133.00	133.30	133.63	133.93	134.26	134.57	133.20	Bull	132.76	~ 133.00	133.24	~ 133.32	133.63	133.95	~ 134.02	134.26	~ 134.50	
週足	Open	High	Low	Close	値幅/週	引け形態	真の高値	真の安値	予想高値	予想安値	予想高値	予想安値	LBP0P	S2	S1	PP	R1	R2	HBOP	3-days AVG	Support Zone 2	Support Zone 1	BP	Resistance Zone 1	Resistance Zone 2						
2017/09/25 ~ 2017/09/29	133.67	134.24	131.75	132.99	249p	陰線引け	-	-	-	-	-	-	129.26	130.50	131.74	132.99	134.23	135.48	136.72												
2017/10/02 ~ 2017/10/06	132.85	133.08	131.85	132.20	123p	陽線引け	133.08	131.75	132.64	131.31	132.64	131.31	130.44	131.14	131.67	132.37	132.90	133.60	134.13												
2017/10/09 ~ 2017/10/13	132.25	133.50	131.87	132.24	163p	陰線引け	133.50	131.87	132.87	131.24	132.87	131.24	129.95	130.91	131.57	132.54	133.20	134.16	134.83	132.63	Bear	130.29	~ 130.91	131.53	~ 131.72	132.54	133.35	~ 133.54	134.16	~ 134.79	
2017/10/16 ~ 2017/10/20	132.16	133.96	131.68	133.61	228p	陽線引け	133.96	131.68	134.92	132.64	134.92	132.64	129.92	130.80	132.20	133.08	134.48	135.36	136.77	132.66	Bull	129.93	~ 130.80	131.67	~ 131.94	133.08	134.22	~ 134.49	135.36	~ 136.24	

EUR/USD										Demark						Pivot						Fibonacci Zone									
当日のOHLCLから計算される翌日の										TD Range Projection						TD pivot points															
日足	Open	High	Low	Close	値幅/日	引け形態	真の高値	真の安値	予想高値	予想安値	予想高値	予想安値	StopLoss	Support	Pivot	Resistance	StopLoss	3-days AVG	Support Zone 2	Support Zone 1	BP	Resistance Zone 1	Resistance Zone 2								
													LBP0P	S2	S1	PP	R1	R2	HBOP												
2017/10/16	1.1811	1.1819	1.1781	1.1798	39p	陰線引け	-	-	-	-	-	-	1.1741	1.1761	1.1779	1.1799	1.1818	1.1838	1.1856												
2017/10/17	1.1797	1.1797	1.1736	1.1766	61p	陽線引け	1.1798	1.1736	1.1782	1.1720	1.1782	1.1720	1.1674	1.1705	1.1735	1.1766	1.1797	1.1828	1.1858												
2017/10/18	1.1766	1.1806	1.1731	1.1792	75p	陽線引け	1.1806	1.1731	1.1836	1.1761	1.1836	1.1761	1.1672	1.1701	1.1747	1.1776	1.1822	1.1851	1.1896	1.1781	Bear	1.1673	~ 1.1701	1.1730	~ 1.1739	1.1776	1.1814	~ 1.1822	1.1851	~ 1.1879	
2017/10/19	1.1793	1.1858	1.1769	1.1847	89p	陽線引け	1.1858	1.1769	1.1897	1.1808	1.1897	1.1808	1.1701	1.1735	1.1791	1.1824	1.1880	1.1914	1.1969	1.1789	Bull	1.1701	~ 1.1735	1.1769	~ 1.1780	1.1824	1.1869	~ 1.1880	1.1914	~ 1.1948	
2017/10/20	1.1847	1.1858	1.1763	1.1768	95p	陽線引け	1.1858	1.1763	1.1813	1.1718	1.1813	1.1718	1.1639	1.1701	1.1735	1.1784	1.1830	1.1891	1.1925	1.1799	Bull	1.1665	~ 1.1701	1.1769	~ 1.1749	1.1796	1.1844	~ 1.1855	1.1891	~ 1.1928	
週足	Open	High	Low	Close	値幅/週	引け形態	真の高値	真の安値	予想高値	予想安値	予想高値	予想安値	LBP0P	S2	S1	PP	R1	R2	HBOP	3-days AVG	Support Zone 2	Support Zone 1	BP	Resistance Zone 1	Resistance Zone 2						
2017/09/25 ~ 2017/09/29	1.1916	1.1937	1.1717	1.1820	219p	陰線引け	-	-	-	-	-	-	1.1493	1.1605	1.1713	1.1825	1.1932	1.2044	1.2151												
2017/10/02 ~ 2017/10/06	1.1807	1.1815	1.1670	1.1735	145p	陽線引け	1.1820	1.1670	1.1777	1.1675	1.1777	1.1675	1.1519	1.1594	1.1665	1.1740	1.1810	1.1885	1.1955												
2017/10/09 ~ 2017/10/13	1.1738	1.1880	1.1720	1.1819	160p	陽線引け	1.1880	1.1720	1.1930	1.1769	1.1930	1.1769	1.1573	1.1646	1.1733	1.1806	1.1893	1.1966	1.2053	1.1790	Bull	1.1585	~ 1.1646	1.1707	~ 1.1726	1.1806	1.1886	~ 1.1905	1.1966	~ 1.2027	
2017/10/16 ~ 2017/10/20	1.1811	1.1858	1.1731	1.1768	127p	陽線引け	1.1858	1.1731	1.1813	1.1686	1.1813	1.1686	1.1586	1.1658	1.1713	1.1786	1.1840	1.1913	1.1968	1.1777	Bull	1.1609	~ 1.1658	1.1707	~ 1.1722	1.1786	1.1849	~ 1.1864	1.1913	~ 1.1962	

GBP/JPY										Demark						Pivot						Fibonacci Zone								
当日のOHLCLから計算される翌日の										TD Range Projection						TD pivot points														
日足	Open	High	Low	Close	値幅/日	引け形態	真の高値	真の安値	予想高値	予想安値	予想高値	予想安値	StopLoss	Support	Pivot	Resistance	StopLoss	3-days AVG	Support Zone 2	Support Zone 1	BP	Resistance Zone 1	Resistance Zone 2							
													LBP0P	S2	S1	PP	R1	R2	HBOP											
2017/10/16	148.78	148.97	148.18	148.62	79p	陰線引け	-	-	-	-	-	-	147.42	147.80	148.21	148.59	149.00	149.38	149.79											
2017/10/17	148.62	149.06	147.79	147.99	127p	陽線引け	149.06	147.79	148.52	147.25	148.52	147.25	146.22	147.00	147.49	148.28	148.77	149.55	150.04											
2017/10/18	147.98	149.18	147.91	149.15	127p	陽線引け	149.18	147.91	149.80	148.53	149.80	148.53	147.04	147.47	148.31	148.75	149.58	150.02	150.86	148.54	Bull	146.99	~ 147.47	147.96	~ 148.11	148.75	149.38	~ 149.53	150.02	~ 150.50
2017/10/19	149.16	149.44	147.92	148.05	152p	陽線引け	149.44	147.92	148.74	147.23	148.74	147.23	145.98	146.95	148.50	148.47	149.02	149.99	150.54	148.50	Bull	146.37	~ 146.95	147.53	~ 147.71	148.47	149.23	~ 149.41	149.99	~ 150.57
2017/10/20	148.05	149.83	148.04	149.70	180p	陽線引け	149.83	148.04	150.67	148.87	150.67	148.87	146.75	147.39	148.54	149.19	150.34	150.99	152.14	148.80	Bull	146.70	~							

IMM扱い8通貨/ダウ/日経/金/オイル/主要クロス円の過去5日及び過去5週の4本値

AUDUSD					CADUSD					CHFUSD				
Date	Open	High	Low	Close	Date	Open	High	Low	Close	Date	Open	High	Low	Close
2017/10/20	0.7877	0.7882	0.7809	0.7814	2017/10/20	0.8009	0.8015	0.7918	0.7922	2017/10/20	1.0242	1.0249	1.0151	1.0151
2017/10/19	0.7848	0.7884	0.7841	0.7878	2017/10/19	0.8024	0.8032	0.8004	0.8009	2017/10/19	1.0196	1.0270	1.0189	1.0243
2017/10/18	0.7845	0.7858	0.7819	0.7848	2017/10/18	0.7985	0.8027	0.7979	0.8024	2017/10/18	1.0222	1.0231	1.0169	1.0196
2017/10/17	0.7853	0.7861	0.7819	0.7845	2017/10/17	0.7989	0.7991	0.7943	0.7985	2017/10/17	1.0252	1.0258	1.0195	1.0222
2017/10/16	0.7884	0.7888	0.7843	0.7854	2017/10/16	0.8016	0.8019	0.7963	0.7989	2017/10/16	1.0256	1.0278	1.0237	1.0252

CNYUSD					EURUSD					GBPUSD				
Date	Open	High	Low	Close	Date	Open	High	Low	Close	Date	Open	High	Low	Close
2017/10/20	0.1514	0.1514	0.1509	0.1511	2017/10/20	1.1847	1.1858	1.1763	1.1768	2017/10/20	1.3152	1.3201	1.3088	1.3185
2017/10/19	0.1511	0.1512	0.1506	0.1509	2017/10/19	1.1793	1.1858	1.1769	1.1847	2017/10/19	1.3204	1.3228	1.3136	1.3152
2017/10/18	0.1513	0.1516	0.1509	0.1509	2017/10/18	1.1766	1.1806	1.1731	1.1792	2017/10/18	1.3190	1.3208	1.3140	1.3204
2017/10/17	0.1518	0.1519	0.1512	0.1512	2017/10/17	1.1797	1.1797	1.1736	1.1766	2017/10/17	1.3252	1.3287	1.3155	1.3190
2017/10/16	0.1523	0.1523	0.1519	0.1519	2017/10/16	1.1811	1.1819	1.1781	1.1798	2017/10/16	1.3296	1.3312	1.3226	1.3252

JPYUSD					MXNUSD					NZDUSD				
Date	Open	High	Low	Close	Date	Open	High	Low	Close	Date	Open	High	Low	Close
2017/10/20	0.8884	0.8888	0.8805	0.8808	2017/10/20	5.3154	5.3233	5.2476	5.2655	2017/10/20	0.7027	0.7035	0.6955	0.6960
2017/10/19	0.8853	0.8904	0.8838	0.8884	2017/10/19	5.2998	5.3274	5.2928	5.3154	2017/10/19	0.7158	0.7171	0.7010	0.7026
2017/10/18	0.8913	0.8917	0.8846	0.8853	2017/10/18	5.3249	5.3393	5.2836	5.2998	2017/10/18	0.7172	0.7179	0.7119	0.7158
2017/10/17	0.8917	0.8926	0.8891	0.8913	2017/10/17	5.2535	5.3385	5.2299	5.3249	2017/10/17	0.7191	0.7198	0.7147	0.7172
2017/10/16	0.8937	0.8956	0.8906	0.8917	2017/10/16	5.2817	5.2867	5.2261	5.2535	2017/10/16	0.7177	0.7205	0.7163	0.7191

Nikkei 225 - Japan (NIX)					
Date	Open	High	Low	Close	(ドル建て終値)
2017/10/20	21390.95	21489.26	21363.10	21457.64	189.37
2017/10/19	21450.04	21503.85	21381.52	21448.52	190.18
2017/10/18	21374.66	21402.76	21317.67	21363.05	189.91
2017/10/17	21352.17	21393.96	21230.67	21336.12	190.26
2017/10/16	21221.27	21347.07	21187.93	21255.56	190.26
週4本値	21221.27	21503.85	21187.93	21457.64	189.37

XAUUSD					
Date	Open	High	Low	Close	出来高
2017/10/20	1289.74	1291.16	1278.14	1280.68	0
2017/10/19	1281.06	1290.39	1276.84	1289.86	872212416
2017/10/18	1285.10	1288.84	1277.06	1281.58	749495424
2017/10/17	1295.21	1296.36	1281.82	1285.70	953061632
2017/10/16	1303.39	1306.09	1290.93	1295.79	1055212032
週4本値	1303.39	1306.09	1276.84	1280.68	1801258500

Dow Jones Industrial - USA (DJIA)					
Date	Open	High	Low	Close	出来高
2017/10/20	23205.18	23328.84	23201.78	23328.63	474384144
2017/10/19	23107.47	23167.24	23052.67	23163.04	350401742
2017/10/18	23087.13	23172.93	23086.75	23157.60	271870357
2017/10/17	22952.41	23002.20	22948.23	22997.44	273086151
2017/10/16	22892.92	22960.12	22887.12	22956.96	247183989
週4本値	22892.92	23328.84	22887.12	23328.63	474384144

Historical Data by **Stooq**
 Historical Data by **MarketNewsline**
 Arrangement by **FX_勝てば官軍?**

Crude Light Oil					
Date	Open	High	Low	Close	出来高
2017/10/20	51.42	51.73	50.70	51.47	986687
2017/10/19	52.05	52.17	51.07	51.29	1130682
2017/10/18	51.94	52.33	51.69	52.04	1018504
2017/10/17	51.93	52.25	51.21	51.88	1279568
2017/10/16	51.43	52.37	51.35	51.87	1180745
週4本値	51.43	52.37	50.70	51.47	

USDJPY					EURJPY					GBPJPY				
日付	始値	高値	安値	終値	日付	始値	高値	安値	終値	日付	始値	高値	安値	終値
2017/10/20	112.57	113.57	112.52	113.53	2017/10/20	133.35	133.96	133.33	133.61	2017/10/20	148.05	149.83	148.04	149.70
2017/10/19	112.96	113.15	112.32	112.57	2017/10/19	133.21	133.62	132.48	133.35	2017/10/19	149.16	149.44	147.92	148.05
2017/10/18	112.20	113.05	112.14	112.96	2017/10/18	132.01	133.28	131.97	133.20	2017/10/18	147.98	149.18	147.91	149.15
2017/10/17	112.15	112.48	112.04	112.20	2017/10/17	132.30	132.37	131.85	132.01	2017/10/17	148.62	149.06	147.79	147.99
2017/10/16	111.90	112.29	111.66	112.15	2017/10/16	132.16	132.39	131.68	132.31	2017/10/16	148.78	148.97	148.18	148.62

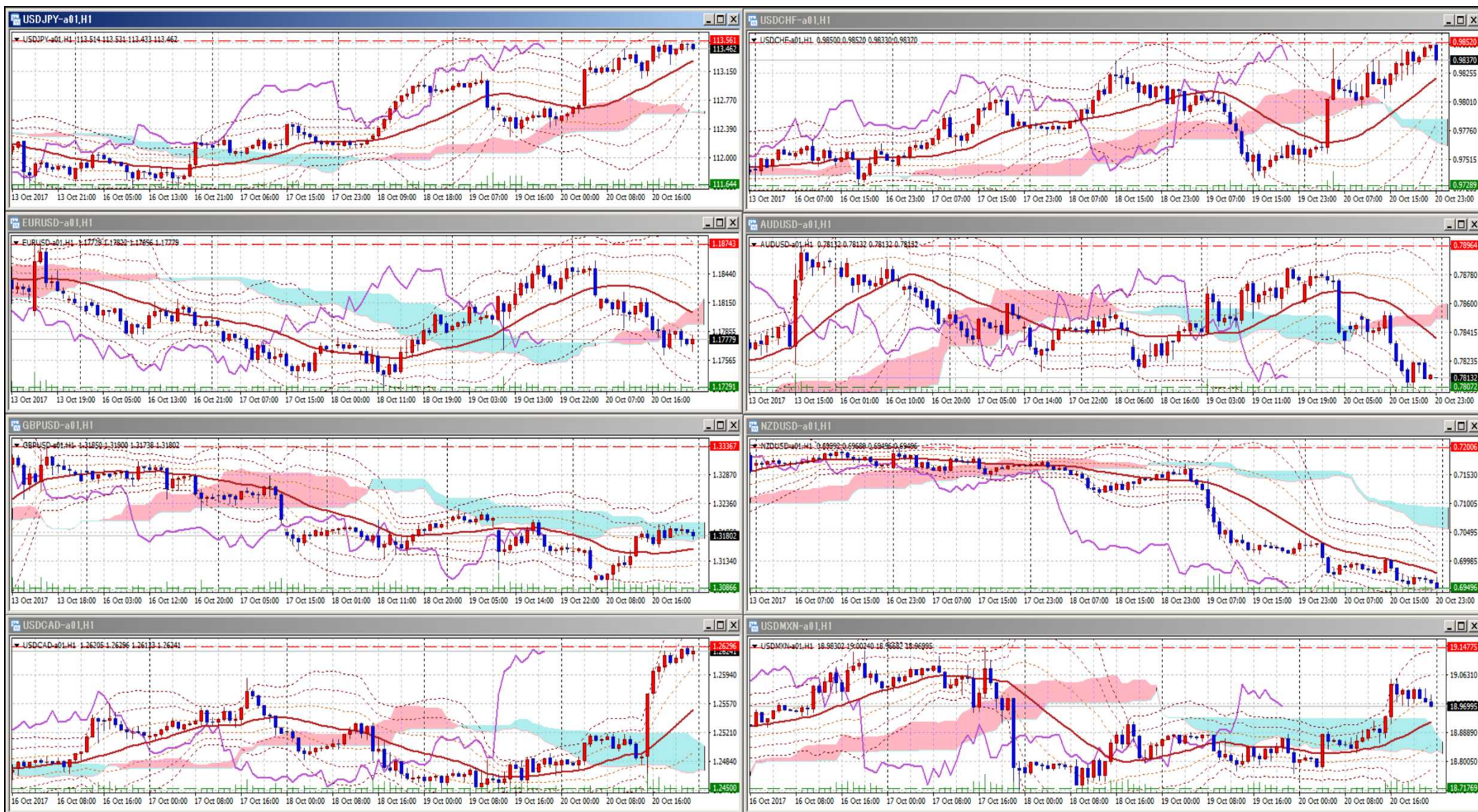
USDJPY Weekly					EURJPY Weekly					GBPJPY Weekly				
日付	始値	高値	安値	終値	日付	始値	高値	安値	終値	日付	始値	高値	安値	終値
2017/10/20	111.90	113.57	111.66	113.53	2017/10/20	132.16	133.96	131.68	133.61	2017/10/20	148.78	149.83	147.79	149.70
2017/10/13	112.68	112.83	111.69	111.88	2017/10/13	132.25	133.50	131.87	132.24	2017/10/13	147.40	149.27	146.96	148.69
2017/10/06	112.52	113.44	112.33	112.66	2017/10/06	132.85	133.08	131.85	132.20	2017/10/06	150.56	150.97	147.04	147.19
2017/09/29	112.18	113.25	111.48	112.51	2017/09/29	133.67	134.24	131.75	132.99	2017/09/29	151.33	152.27	149.76	150.76
2017/09/22	111.14	112.72	111.00	112.06	2017/09/22	132.65	134.41	132.58	133.84	2017/09/22	151.01	152.86	150.15	151.54

先週のIMM取り扱い対ドル8通貨チャート

※ 赤点線は週最高値/青点線は週最低値、BB中心線はSMA21

2017/10/16 ~ 2017/10/20

Chart by OANDA Japan MetaTrader4



Pivot Maker Ver 3.0 by FX_勝てば官軍?

<http://fx.najirane.com>