

JAPANESE YEN - CHICAGO MERCANTILE EXCHANGE
2017/06/27 ~ 2017/12/19

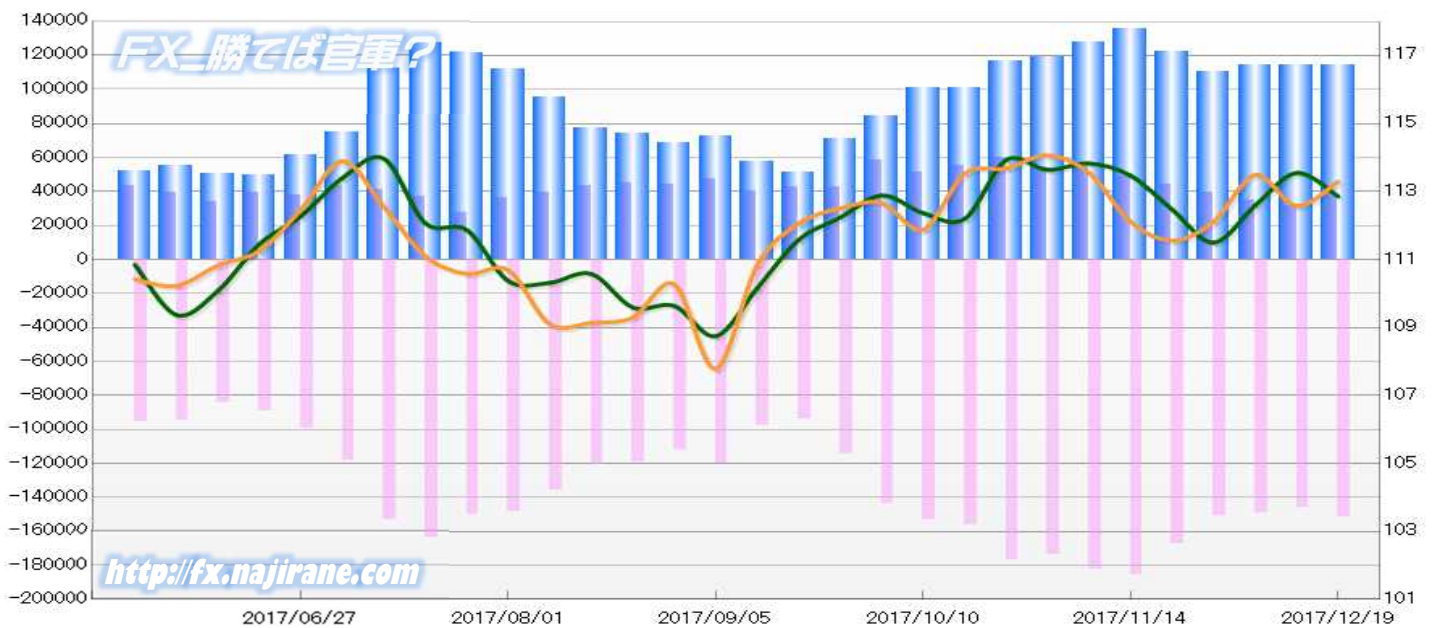
Code-097741

2017/12/22 NYクローズ時公表値

Report_Date	Non Commercial Positions												火曜日 引け値	金曜日 引け値
	Long	増減	増減(%)	Short	増減	増減(%)	売り越し	増減	増減(%)	売買計	増減	増減(%)		
2017/12/19	36874	5127	16.1%	151247	5377	3.7%	114373	250	0.2%	188121	10504	5.9%	112.86	113.29
2017/12/12	31747	-3019	-8.7%	145870	-3163	-2.1%	114123	-144	-0.1%	177617	-6182	-3.4%	113.55	112.58
2017/12/05	34766	-5027	-12.6%	149033	-1400	-0.9%	114267	3627	3.3%	183799	-6427	-3.4%	112.59	113.49
2017/11/28	39793	-4589	-10.3%	150433	-16551	-9.9%	110640	-11962	-9.8%	190226	-21140	-10.0%	111.50	112.12
2017/11/21	44382	-4965	-10.1%	166984	-18362	-9.9%	122602	-13397	-9.9%	211366	-23327	-9.9%	112.47	111.56
2017/11/14	49347	-4989	-9.2%	185346	3162	1.7%	135999	8151	6.4%	234693	-1827	-0.8%	113.47	112.11
2017/11/07	54336	-249	-0.5%	182184	8730	5.0%	127848	8979	7.6%	236520	8481	3.7%	113.83	113.55
2017/10/31	54585	-5492	-9.1%	173454	-3480	-2.0%	118869	2012	1.7%	228039	-8972	-3.8%	113.64	114.07
2017/10/24	60077	5067	9.2%	176934	20638	13.2%	116857	15571	15.4%	237011	25705	12.2%	113.93	113.68
2017/10/17	55010	3355	6.5%	156296	3222	2.1%	101286	-133	-0.1%	211306	6577	3.2%	112.20	113.53
2017/10/10	51655	-7115	-12.1%	153074	9661	6.7%	101419	16776	19.8%	204729	2546	1.3%	112.37	111.88
2017/10/03	58770	15807	36.8%	143413	29103	25.5%	84643	13296	18.6%	202183	44910	28.6%	112.89	112.66
2017/09/26	42963	528	1.2%	114310	20553	21.9%	71347	20025	39.0%	157273	21081	15.5%	112.24	112.51
2017/09/19	42435	1793	4.4%	93757	-4182	-4.3%	51322	-5975	-10.4%	136192	-2389	-1.7%	111.58	112.06
2017/09/12	40642	-6643	-14.0%	97939	-22291	-18.5%	57297	-15648	-21.5%	138581	-28934	-17.3%	110.16	110.84
2017/09/05	47285	3396	7.7%	120230	7817	7.0%	72945	4421	6.5%	167515	11213	7.2%	108.75	107.79
2017/08/29	43889	-1273	-2.8%	112413	-6835	-5.7%	68524	-5562	-7.5%	156302	-8108	-4.9%	109.64	110.27
2017/08/22	45162	1854	4.3%	119248	-1552	-1.3%	74086	-3406	-4.4%	164410	302	0.2%	109.59	109.30
2017/08/15	43308	3498	8.8%	120800	-14823	-10.9%	77492	-18321	-19.1%	164108	-11325	-6.5%	110.58	109.14
2017/08/08	39810	3365	9.2%	135623	-13018	-8.8%	95813	-16383	-14.6%	175433	-9653	-5.2%	110.32	109.10
2017/08/01	36445	8427	30.1%	148641	-866	-0.6%	112196	-9293	-7.6%	185086	7561	4.3%	110.37	110.69
2017/07/25	28018	-9401	-25.1%	149507	-14831	-9.0%	121489	-5430	-4.3%	177525	-24232	-12.0%	111.87	110.58
2017/07/18	37419	-3359	-8.2%	164338	11435	7.5%	126919	14794	13.2%	201757	8076	4.2%	112.07	111.10
2017/07/11	40778	-2870	-6.6%	152903	34219	28.8%	112125	37089	49.4%	193681	31349	19.3%	113.97	112.55
2017/07/03	43648	5394	14.1%	118684	19080	19.2%	75036	13686	22.3%	162332	24474	17.8%	113.40	113.90
2017/06/27	38254			99604			61350			137858			112.28	112.47

JAPANESE YEN - CHICAGO MERCANTILE EXCHANGE
FUTURES ONLY POSITIONS

— 金曜終値 — 火曜終値 — Short枚数 — Long枚数 — 売り越し枚数(マイナスの場合は買越しと読替え)



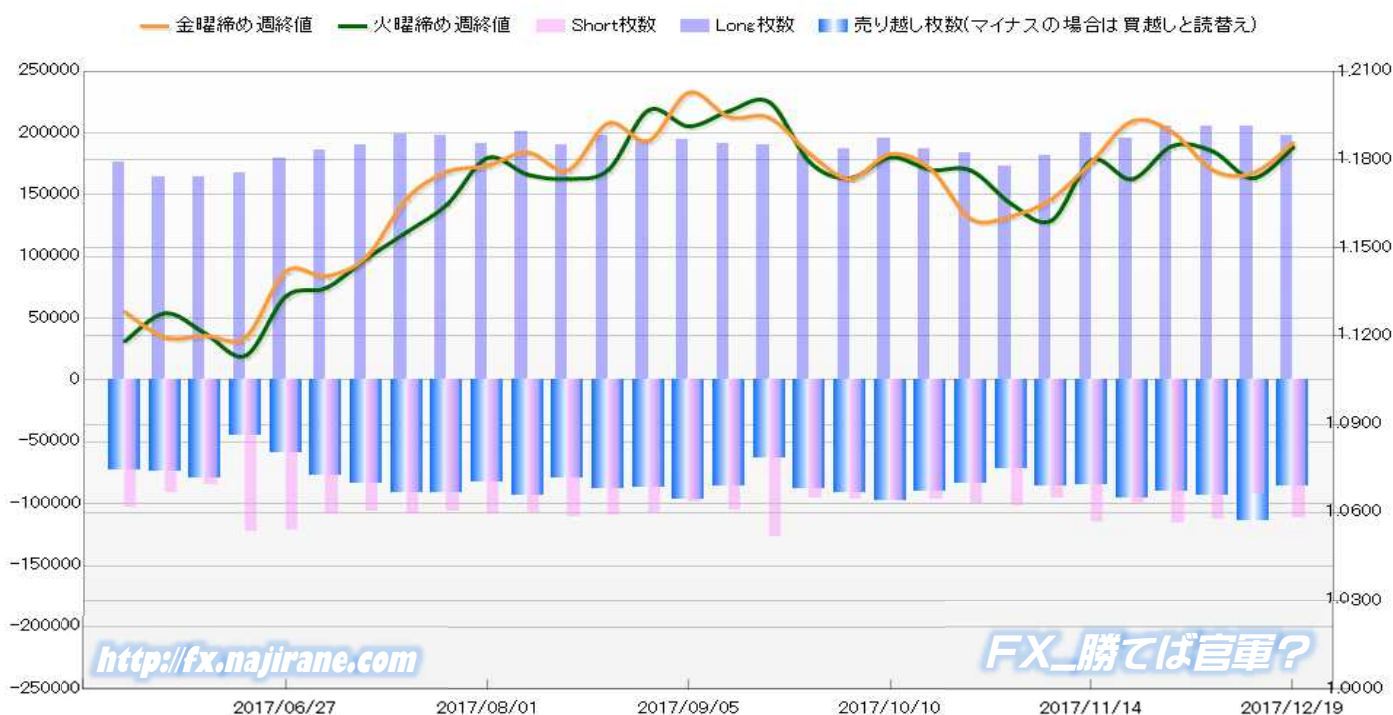
EURO FX - CHICAGO MERCANTILE EXCHANGE
2017/06/27 ~ 2017/12/19

Code-099741

2017/12/22 NYクローズ時公表値

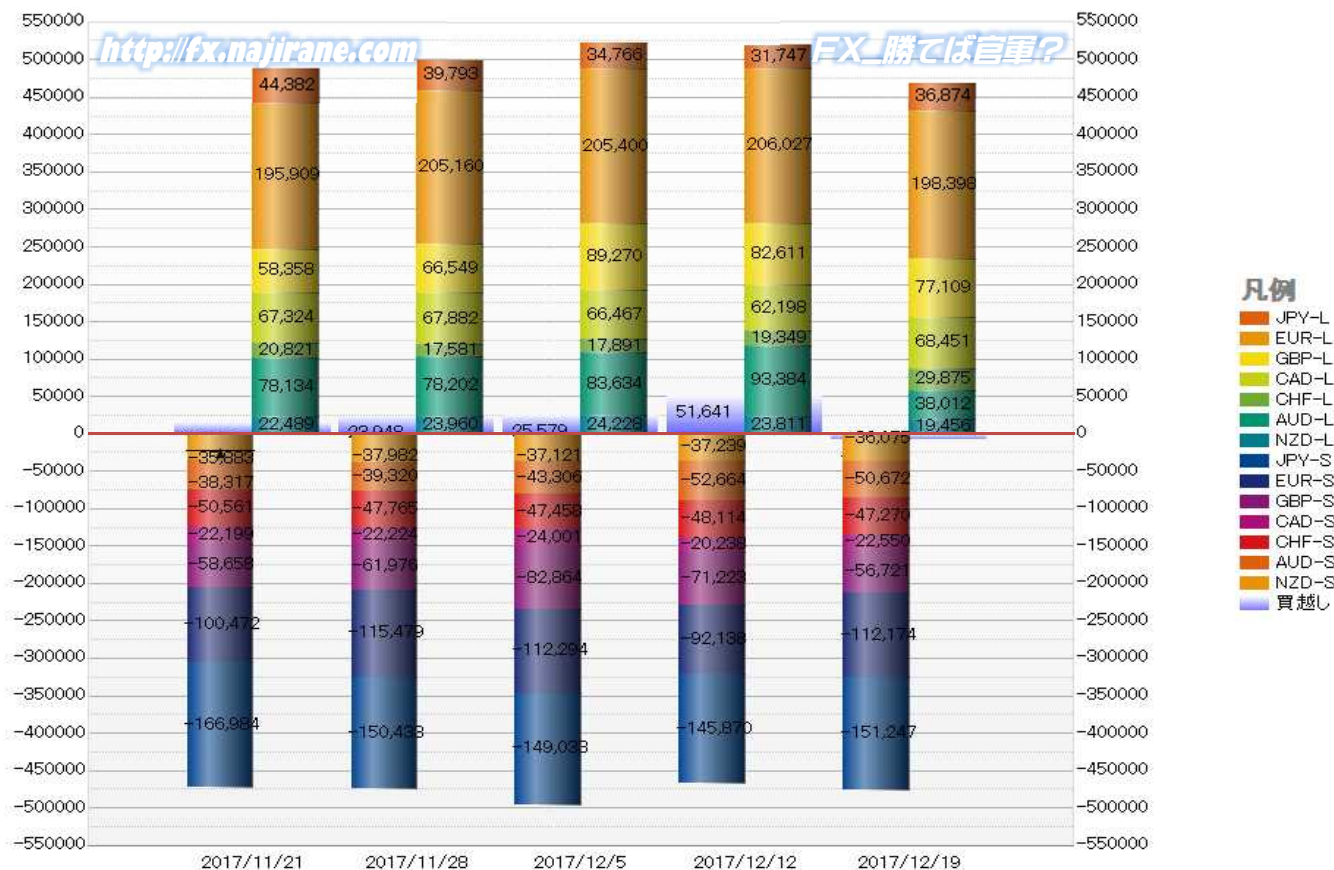
Report_Date	Non Commercial Positions									火曜日 引け値	金曜日 引け値			
	Long	増減		Short	増減	売り越し	増減	売買計	増減					
2017/12/19	198398	-7629	-3.7%	112174	20036	21.7%	-86224	-27665	-24.3%	310572	12407	4.2%	1.1842	1.1857
2017/12/12	206027	627	0.3%	92138	-20156	-17.9%	-1E+05	20783	22.3%	298165	-19529	-6.1%	1.1737	1.1754
2017/12/05	205400	240	0.1%	112294	-3185	-2.8%	-93106	3425	3.8%	317694	-2945	-0.9%	1.1829	1.1765
2017/11/28	205160	9251	4.7%	115479	15007	14.9%	-89681	-5756	-6.0%	320639	24258	8.2%	1.1847	1.1894
2017/11/21	195909	-4114	-2.1%	100472	-14965	-13.0%	-95437	10851	12.8%	296381	-19079	-6.0%	1.1734	1.1931
2017/11/14	200023	18688	10.3%	115437	19557	20.4%	-84586	-869	-1.0%	315460	38245	13.8%	1.1798	1.1793
2017/11/07	181335	7665	4.4%	95880	-5693	-5.6%	-85455	13358	18.5%	277215	1972	0.7%	1.1593	1.1666
2017/10/31	173670	-9869	-5.4%	101573	1538	1.5%	-72097	-11407	-13.7%	275243	-8331	-2.9%	1.1650	1.1608
2017/10/24	183539	-3212	-1.7%	100035	3736	3.9%	-83504	-6948	-7.7%	283574	524	0.2%	1.1764	1.1598
2017/10/17	186751	-9065	-4.6%	96299	-1438	-1.5%	-90452	-7627	-7.8%	283050	-10503	-3.6%	1.1766	1.1768
2017/10/10	195816	8763	4.7%	97737	1517	1.6%	-98079	7246	8.0%	293553	10280	3.6%	1.1808	1.1819
2017/10/03	187053	3374	1.8%	96220	708	0.7%	-90833	2666	3.0%	283273	4082	1.5%	1.1737	1.1735
2017/09/26	183679	-6346	-3.3%	95512	-31760	-25.0%	-88167	25414	40.5%	279191	-38106	###	1.1791	1.1820
2017/09/19	190025	-1077	-0.6%	127272	22228	21.2%	-62753	-23305	-27.1%	317297	21151	7.1%	1.1995	1.1943
2017/09/12	191102	-3874	-2.0%	105044	6377	6.5%	-86058	-10251	-10.6%	296146	2503	0.9%	1.1965	1.1945
2017/09/05	194976	645	0.3%	98667	-9145	-8.5%	-96309	9790	11.3%	293643	-8500	-2.8%	1.1914	1.2028
2017/08/29	194331	-3487	-1.8%	107812	-2030	-1.8%	-86519	-1457	-1.7%	302143	-5517	-1.8%	1.1968	1.1865
2017/08/22	197818	7482	3.9%	109842	-1227	-1.1%	-87976	8709	11.0%	307660	6255	2.1%	1.1765	1.1924
2017/08/15	190336	-10895	-5.4%	111069	3523	3.3%	-79267	-14418	-15.4%	301405	-7372	-2.4%	1.1735	1.1764
2017/08/08	201231	9754	5.1%	107546	-1294	-1.2%	-93685	11048	13.4%	308777	8460	2.8%	1.1749	1.1825
2017/08/01	191477	-6179	-3.1%	108840	2026	1.9%	-82637	-8205	-9.0%	300317	-4153	-1.4%	1.1806	1.1780
2017/07/25	197656	-1884	-0.9%	106814	-1405	-1.3%	-90842	-479	-0.5%	304470	-3289	-1.1%	1.1648	1.1759
2017/07/18	199540	9273	4.9%	108219	1740	1.6%	-91321	7533	9.0%	307759	11013	3.7%	1.1554	1.1668
2017/07/11	190267	4342	2.3%	106479	-1982	-1.8%	-83788	6324	8.2%	296746	2360	0.8%	1.1465	1.1470
2017/07/03	185925	6254	3.5%	108461	-12515	-10.3%	-77464	18769	32.0%	294386	-6261	-2.1%	1.1364	1.1404
2017/06/27	179671			120976			-58695			300647			1.1336	1.1421

EURO FX - CHICAGO MERCANTILE EXCHANGE
FUTURES ONLY POSITIONS



	2017/11/21			2017/11/28			2017/12/05			2017/12/12			2017/12/19		
	Long	Short	売り越し	Long	Short	売り越し	Long	Short	売り越し	Long	Short	売り越し	Long	Short	売り越し
JPY	44382	166984	122602	39793	150433	110640	34766	149033	114267	31747	145870	114123	36874	151247	114373
	前週比 枚数増減 (枚)			-4589	-16551	-11962	-5027	-1400	3627	-3019	-3163	-144	5127	5377	250
	前週比 枚数増減 (%)			-10.3%	-9.9%	-9.8%	-12.6%	-0.9%	3.3%	-8.7%	-2.1%	-0.1%	16.1%	3.7%	0.2%
EUR	195909	100472	-95437	205160	115479	-89681	205400	112294	-93106	206027	92138	-113889	198398	112174	-86224
	前週比 枚数増減 (枚)			9251	15007	-5756	240	-3185	3425	627	-20156	20783	-7629	20036	-27665
	前週比 枚数増減 (%)			4.7%	14.9%	-6.0%	0.1%	-2.8%	3.8%	0.3%	-17.9%	22.3%	-3.7%	21.7%	-24.3%
GBP	58358	58658	300	66549	61976	-4573	89270	82864	-6406	82611	71223	-11388	77109	56721	-20388
	前週比 枚数増減 (枚)			8191	3318	4873	22721	20888	1833	-6659	-11641	4982	-5502	-14502	9000
	前週比 枚数増減 (%)			14.0%	5.7%	1624.3%	34.1%	33.7%	40.1%	-7.5%	-14.0%	77.8%	-6.7%	-20.4%	79.0%
AUD	78134	38317	-39817	78202	39320	-38882	83634	43306	-40328	93384	52664	-40720	38012	50672	12660
	前週比 枚数増減 (枚)			68	1003	-935	5432	3986	1446	9750	9358	392	-55372	-1992	53380
	前週比 枚数増減 (%)			0.1%	2.6%	-2.3%	6.9%	10.1%	3.7%	11.7%	21.6%	1.0%	-59.3%	-3.8%	131.1%
CAD	67324	22199	-45125	67882	22224	-45658	66467	24001	-42466	62198	20238	-41960	68451	22550	-45901
	前週比 枚数増減 (枚)			558	25	533	-1415	1777	-3192	-4269	-3763	-506	6253	2312	3941
	前週比 枚数増減 (%)			0.8%	0.1%	1.2%	-2.1%	8.0%	-7.0%	-6.4%	-15.7%	-1.2%	10.1%	11.4%	9.4%
CHF	20821	50561	29740	17581	47765	30184	17891	47458	29567	19349	48114	28765	29875	47270	17395
	前週比 枚数増減 (枚)			-3240	-2796	444	310	-307	-617	1458	656	-802	10526	-844	-11370
	前週比 枚数増減 (%)			-15.6%	-5.5%	1.5%	1.8%	-0.6%	-2.0%	8.1%	1.4%	-2.7%	54.4%	-1.8%	-39.5%
NZD	22489	35883	13394	23960	37982	14022	24228	37121	12893	23811	37239	13428	19456	36075	16619
	前週比 枚数増減 (枚)			1471	2099	628	268	-861	-1129	-417	118	535	-4355	-1164	3191
	前週比 枚数増減 (%)			6.5%	5.8%	4.7%	1.1%	-2.3%	-8.1%	-1.7%	0.3%	4.1%	-18.3%	-3.1%	23.8%
MXN	110044	29658	-80386	112966	23400	-89566	121003	24480	-96523	112383	26207	-86176	102273	48379	-53894
	前週比 枚数増減 (枚)			2922	-6258	9180	8037	1080	6957	-8620	1727	-10347	-10110	22172	-32282
	前週比 枚数増減 (%)			2.7%	-21.1%	11.4%	7.1%	4.6%	7.8%	-7.1%	7.1%	-10.7%	-9.0%	84.6%	-37.5%
Total All 8	597461	502732	-94729	612093	498579	-113514	642659	520557	-122102	631510	493693	-137817	570448	525088	-45360
	前週比 枚数増減 (枚)			14632	-4153	18785	30566	21978	8588	-11149	-26864	15715	-61062	31395	-92457
	前週比 枚数増減 (%)			2.4%	-0.8%	19.8%	5.0%	4.4%	7.6%	-1.7%	-5.2%	12.9%	-9.7%	6.4%	-67.1%
Total 7 (MXN除)	487417	473074	-14343	499127	475179	-23948	521656	496077	-25579	519127	467486	-51641	468175	476709	8534
	前週比 枚数増減 (枚)			11710	2105	9605	22529	20898	1631	-2529	-28591	26062	-50952	9223	60175
	前週比 枚数増減 (%)			2.4%	0.4%	67.0%	4.5%	4.4%	6.8%	-0.5%	-5.8%	101.9%	-9.8%	2.0%	116.5%

直近5週 CFTC IMM主要7通貨の構成

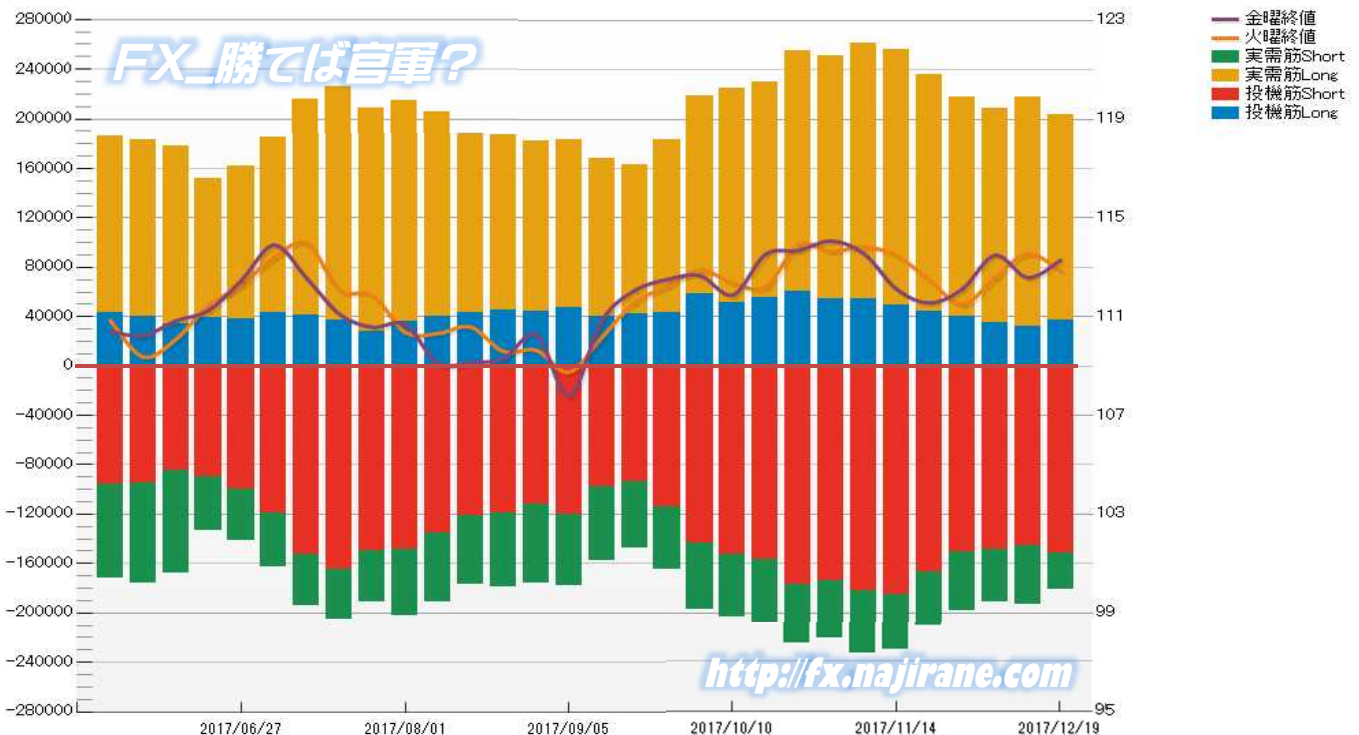


JAPANESE YEN - CHICAGO MERCANTILE EXCHANGE
FUTURES ONLY POSITIONS

Code-097741
2017/12/22 公表値

Date	投機筋集計				実需筋集計				投機筋+実需筋合計				ドル円終値	
	円買い	円売り	売り越し	売買計	円買い	円売り	売り越し	売買計	円買い	円売り	売り越し	売買計	火曜締め	金曜締め
2017/12/19	36874	151247	114373	188121	166728	30125	-136603	196853	203602	181372	-22230	384974	112.86	113.29
2017/12/12	31747	145870	114123	177617	186472	47517	-138955	233989	218219	193387	-24832	411606	113.55	112.58
2017/12/05	34766	149033	114267	183799	174129	42101	-132028	216230	208895	191134	-17761	400029	112.59	113.49
2017/11/28	39793	150433	110640	190226	178434	47467	-130967	225901	218227	197900	-20327	416127	111.50	112.12
2017/11/21	44382	166984	122602	211366	191725	44944	-146781	236669	236107	211928	-24179	448035	112.47	111.56
2017/11/14	49347	185346	135999	234693	207213	45266	-161947	252479	256560	230612	-25948	487172	113.47	112.11
2017/11/07	54336	182184	127848	236520	206955	51547	-155408	258502	261291	233731	-27560	495022	113.83	113.55
2017/10/31	54585	173454	118869	228039	196707	48090	-148617	244797	251292	221544	-29748	472836	113.64	114.07
2017/10/24	60077	176934	116857	237011	195330	48338	-146992	243668	255407	225272	-30135	480679	113.93	113.68
2017/10/17	55010	156296	101286	211306	174720	51833	-122887	226553	229730	208129	-21601	437859	112.20	113.53
2017/10/10	51655	153074	101419	204729	173289	49943	-123346	223232	224944	203017	-21927	427961	112.37	111.88
2017/10/03	58770	143413	84643	202183	160230	53797	-106433	214027	219000	197210	-21790	416210	112.89	112.66
2017/09/26	42963	114310	71347	157273	140482	50047	-90435	190529	183445	164357	-19088	347802	112.24	112.51
2017/09/19	42435	93757	51322	136192	120365	53357	-67008	173722	162800	147114	-15686	309914	111.58	112.06
2017/09/12	40642	97939	57297	138581	127392	59890	-67502	187282	168034	157829	-10205	325863	110.16	110.84
2017/09/05	47285	120230	72945	167515	136437	58205	-78232	194642	183722	178435	-5287	362157	108.75	107.79
2017/08/29	43889	112413	68524	156302	138466	63262	-75204	201728	182355	175675	-6680	358030	109.64	110.27
2017/08/22	45162	119248	74086	164410	142448	59657	-82791	202105	187610	178905	-8705	366515	109.59	109.30
2017/08/15	43308	120800	77492	164108	145227	56054	-89173	201281	188535	176854	-11681	365389	110.58	109.14
2017/08/08	39810	135623	95813	175433	165991	55822	-110169	221813	205801	191445	-14356	397246	110.32	109.10
2017/08/01	36445	148641	112196	185086	178378	53446	-124932	231824	214823	202087	-12736	416910	110.37	110.69
2017/07/25	28018	149507	121489	177525	180207	41743	-138464	221950	208225	191250	-16975	399475	111.87	110.58
2017/07/18	37419	164338	126919	201757	188763	41117	-147646	229880	226182	205455	-20727	431637	112.07	111.10
2017/07/11	40778	152903	112125	193681	174866	41714	-133152	216580	215644	194617	-21027	410261	113.97	112.55
2017/07/03	43648	118684	75036	162332	141824	43641	-98183	185465	185472	162325	-23147	347797	113.40	113.90
2017/06/27	38254	99604	61350	137858	123453	41443	-82010	164896	161707	141047	-20660	302754	112.28	112.47
2017/06/20	39498	89457	49959	128955	112255	44243	-68012	156498	151753	133700	-18053	285453	111.46	111.26
2017/06/13	34160	84713	50553	118873	144233	83337	-60896	227570	178393	168050	-10343	346443	110.08	110.83
2017/06/06	39736	94763	55027	134499	143746	81444	-62302	225190	183482	176207	-7275	359689	109.37	110.23
2017/05/30	43404	95679	52275	139083	143450	76426	-67024	219876	186854	172105	-14749	358959	110.85	110.42

JAPANESE YEN - CHICAGO MERCANTILE EXCHANGE
FUTURES ONLY POSITIONS Code-097741



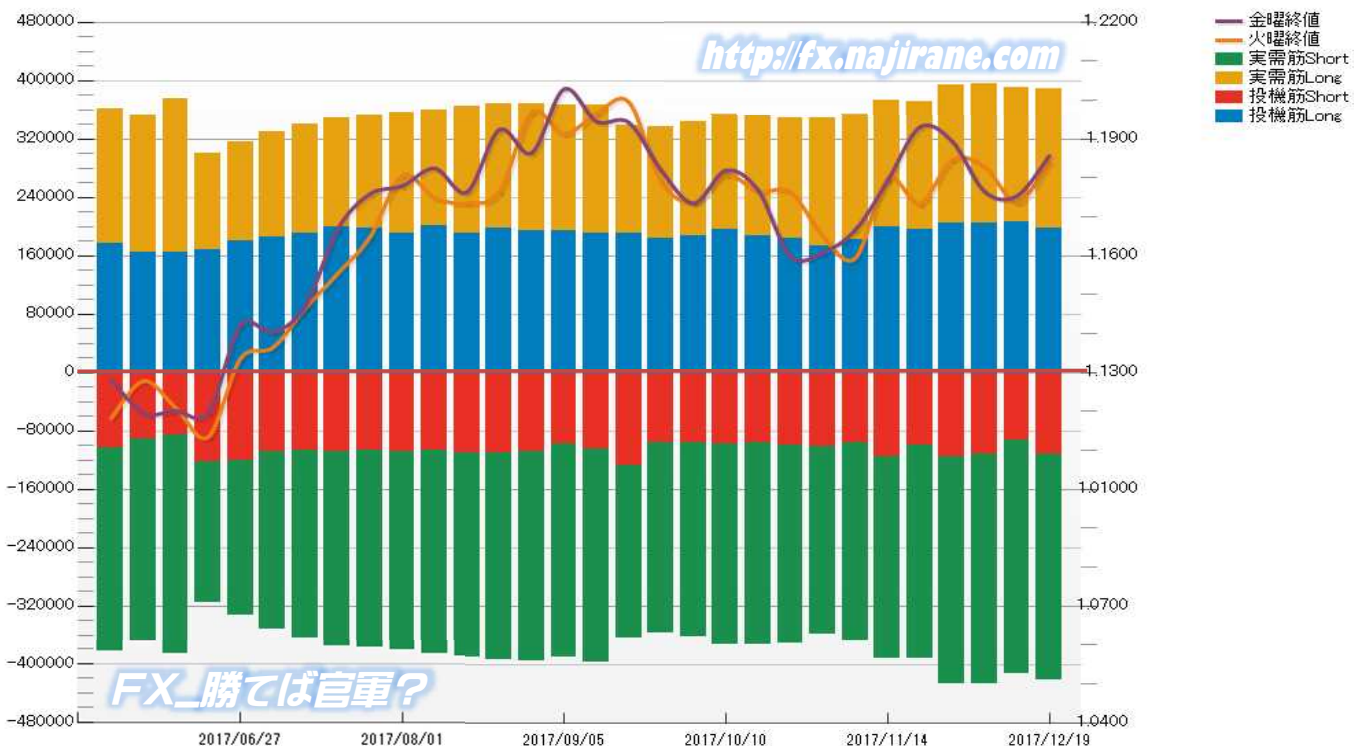
<http://fx.najirane.com>

EURO FX - CHICAGO MERCANTILE EXCHANGE
FUTURES ONLY POSITIONS

Code-099741
2017/12/22 公表値

Date	投機筋集計				実需筋集計				投機筋+実需筋合計				ユーロドル終値	
	EUR買い	EUR売り	売り越し	売買計	EUR買い	EUR売り	売り越し	売買計	EUR買い	EUR売り	売り越し	売買計	火曜締め	金曜締め
2017/12/19	198398	112174	-86224	310572	190521	310282	119761	500803	388919	422456	33537	811375	1.1842	1.1857
2017/12/12	206027	92138	-113889	298165	185209	320739	135530	505948	391236	412877	21641	804113	1.1737	1.1754
2017/12/05	205400	112294	-93106	317694	190380	314914	124534	505294	395780	427208	31428	822988	1.1829	1.1765
2017/11/28	205160	115479	-89681	320639	189056	310897	121841	499953	394216	426376	32160	820592	1.1847	1.1894
2017/11/21	195909	100472	-95437	296381	175054	292129	117075	467183	370963	392601	21638	763564	1.1734	1.1931
2017/11/14	200023	115437	-84586	315460	173624	275809	102185	449433	373647	391246	17599	764893	1.1798	1.1793
2017/11/07	181335	95880	-85455	277215	173294	272122	98828	445416	354629	368002	13373	722631	1.1593	1.1666
2017/10/31	173670	101573	-72097	275243	174510	257642	83132	432152	348180	359215	11035	707395	1.1650	1.1608
2017/10/24	183539	100035	-83504	283574	165585	271183	105598	436768	349124	371218	22094	720342	1.1764	1.1598
2017/10/17	186751	96299	-90452	283050	165127	276217	111090	441344	351878	372516	20638	724394	1.1766	1.1768
2017/10/10	195816	97737	-98079	293553	158660	275104	116444	433764	354476	372841	18365	727317	1.1808	1.1819
2017/10/03	187053	96220	-90833	283273	157203	266511	109308	423714	344256	362731	18475	706987	1.1737	1.1735
2017/09/26	183679	95512	-88167	279191	152592	261208	108616	413800	336271	356720	20449	692991	1.1791	1.1820
2017/09/19	190025	127272	-62753	317297	149288	236626	87338	385914	339313	363898	24585	703211	1.1995	1.1943
2017/09/12	191102	105044	-86058	296146	175600	291785	116185	467385	366702	396829	30127	763531	1.1965	1.1945
2017/09/05	194976	98667	-96309	293643	171223	291891	120668	463114	366199	390558	24359	756757	1.1914	1.2028
2017/08/29	194331	107812	-86519	302143	173410	287170	113760	460580	367741	394982	27241	762723	1.1968	1.1865
2017/08/22	197818	109842	-87976	307660	169989	284515	114526	454504	367807	394357	26550	762164	1.1765	1.1924
2017/08/15	190336	111069	-79267	301405	174177	278546	104369	452723	364513	389615	25102	754128	1.1735	1.1764
2017/08/08	201231	107546	-93685	308777	157833	279623	121790	437456	359064	387169	28105	746233	1.1749	1.1825
2017/08/01	191477	108840	-82637	300317	164304	272865	108561	437169	355781	381705	25924	737486	1.1806	1.1780
2017/07/25	197656	106814	-90842	304470	155560	271095	115535	426655	353216	377909	24693	731125	1.1648	1.1759
2017/07/18	199540	108219	-91321	307759	150114	268566	118452	418680	349654	376785	27131	726439	1.1554	1.1668
2017/07/11	190267	106479	-83788	296746	150147	258152	108005	408299	340414	364631	24217	705045	1.1465	1.1470
2017/07/03	185925	108461	-77464	294386	144260	244301	100041	388561	330185	352762	22577	682947	1.1364	1.1404
2017/06/27	179671	120976	-58695	300647	136134	211639	75505	347773	315805	332615	16810	648420	1.1336	1.1421
2017/06/20	167245	122393	-44852	289638	132839	192994	60155	325833	300084	315387	15303	615471	1.1134	1.1197
2017/06/13	164227	85174	-79053	249401	211353	301281	89928	512634	375580	386455	10875	762035	1.1209	1.1201
2017/06/06	164889	90880	-74009	255769	188042	279047	91005	467089	352931	369927	16996	722858	1.1278	1.1196
2017/05/30	176226	103357	-72869	279583	185792	279432	93640	465224	362018	382789	20771	744807	1.1182	1.1282

EURO FX - CHICAGO MERCANTILE EXCHANGE
FUTURES ONLY POSITIONS Code-099741



過去5日及び過去4週の4本値と各種ピボット

2017/12/18 ~ 2017/12/22

Table with columns: USD/JPY, Demark (Daily OHLC and TD Range Projection), Pivot, Fibonacci Zone, and data rows for dates 2017/12/18 to 2017/12/22.

Table with columns: EUR/JPY, Demark (Daily OHLC and TD Range Projection), Pivot, Fibonacci Zone, and data rows for dates 2017/12/18 to 2017/12/22.

Table with columns: EUR/USD, Demark (Daily OHLC and TD Range Projection), Pivot, Fibonacci Zone, and data rows for dates 2017/12/18 to 2017/12/22.

Table with columns: GBP/JPY, Demark (Daily OHLC and TD Range Projection), Pivot, Fibonacci Zone, and data rows for dates 2017/12/18 to 2017/12/22.

Table with columns: GBP/USD, Demark (Daily OHLC and TD Range Projection), Pivot, Fibonacci Zone, and data rows for dates 2017/12/18 to 2017/12/22.

IMM扱い8通貨/ダウ/日経/金/オイル/主要クロス円の過去5日及び過去5週の4本値

AUDUSD					CADUSD					CHFUSD				
Date	Open	High	Low	Close	Date	Open	High	Low	Close	Date	Open	High	Low	Close
2017/12/22	0.7701	0.7721	0.7701	0.7716	2017/12/22	0.7850	0.7875	0.7815	0.7860	2017/12/22	1.0115	1.0119	1.0089	1.0109
2017/12/21	0.7667	0.7708	0.7654	0.7701	2017/12/21	0.7792	0.7874	0.7789	0.7850	2017/12/21	1.0135	1.0147	1.0091	1.0115
2017/12/20	0.7660	0.7680	0.7652	0.7667	2017/12/20	0.7765	0.7801	0.7763	0.7792	2017/12/20	1.0152	1.0174	1.0116	1.0135
2017/12/19	0.7666	0.7684	0.7646	0.7660	2017/12/19	0.7773	0.7782	0.7742	0.7765	2017/12/19	1.0144	1.0168	1.0123	1.0152
2017/12/18	0.7649	0.7678	0.7641	0.7666	2017/12/18	0.7770	0.7787	0.7763	0.7774	2017/12/18	1.0091	1.0163	1.0083	1.0144

CNYUSD					EURUSD					GBPUSD				
Date	Open	High	Low	Close	Date	Open	High	Low	Close	Date	Open	High	Low	Close
2017/12/22	0.1523	0.1524	0.1521	0.1522	2017/12/22	1.1866	1.1869	1.1817	1.1857	2017/12/22	1.3384	1.3397	1.3361	1.3364
2017/12/21	0.1523	0.1527	0.1519	0.1521	2017/12/21	1.1873	1.1890	1.1850	1.1866	2017/12/21	1.3372	1.3388	1.3333	1.3384
2017/12/20	0.1514	0.1521	0.1514	0.1521	2017/12/20	1.1842	1.1902	1.1829	1.1873	2017/12/20	1.3388	1.3420	1.3369	1.3373
2017/12/19	0.1513	0.1515	0.1512	0.1514	2017/12/19	1.1783	1.1849	1.1777	1.1842	2017/12/19	1.3380	1.3403	1.3332	1.3388
2017/12/18	0.1513	0.1513	0.1511	0.1512	2017/12/18	1.1747	1.1834	1.1741	1.1783	2017/12/18	1.3320	1.3419	1.3311	1.3380

JPYUSD					MXNUSD					NZDUSD				
Date	Open	High	Low	Close	Date	Open	High	Low	Close	Date	Open	High	Low	Close
2017/12/22	0.8822	0.8830	0.8815	0.8827	2017/12/22	5.1386	5.1420	5.0611	5.0672	2017/12/22	0.7018	0.7027	0.7003	0.7023
2017/12/21	0.8822	0.8833	0.8800	0.8822	2017/12/21	5.1988	5.2019	5.1192	5.1386	2017/12/21	0.7005	0.7020	0.6987	0.7018
2017/12/20	0.8861	0.8861	0.8813	0.8822	2017/12/20	5.2044	5.2140	5.1884	5.1988	2017/12/20	0.6979	0.7016	0.6954	0.7005
2017/12/19	0.8884	0.8888	0.8843	0.8861	2017/12/19	5.2422	5.2519	5.1976	5.2044	2017/12/19	0.6994	0.7019	0.6967	0.6979
2017/12/18	0.8879	0.8903	0.8863	0.8885	2017/12/18	5.2309	5.2619	5.2270	5.2422	2017/12/18	0.6998	0.7028	0.6992	0.6994

Nikkei 225 - Japan (NIX)					出来高	
Date	Open	High	Low	Close	(ドル建て終値)	出来高
2017/12/22	22850.73	22908.84	22801.16	22902.76	202.03	0
2017/12/21	22852.01	22894.95	22728.06	22866.10	201.48	75326720
2017/12/20	22834.93	22923.50	22806.73	22891.72	202.11	952698368
2017/12/19	22961.47	22990.42	22862.82	22868.00	202.93	726761728
2017/12/18	22770.44	22927.50	22735.20	22901.77	203.62	878113216
週4本値	22770.44	22990.42	22728.06	22902.76	202.03	(N225銘柄計) (東証一部全体計)

XAUUSD				
Date	Open	High	Low	Close
2017/12/22	1266.75	1276.18	1265.14	1274.12
2017/12/21	1265.57	1269.02	1263.15	1266.62
2017/12/20	1261.67	1267.93	1261.47	1265.54
2017/12/19	1262.35	1265.31	1259.34	1261.75
2017/12/18	1254.99	1264.01	1252.84	1262.30
週4本値	1254.99	1276.18	1252.84	1274.12

Dow Jones Industrial - USA (DJIA)					出来高
Date	Open	High	Low	Close	出来高
2017/12/22	24764.04	24784.15	24717.51	24754.06	255140781
2017/12/21	24778.26	24850.91	24766.27	24782.29	339531731
2017/12/20	24838.09	24852.44	24697.11	24726.65	341786187
2017/12/19	24834.38	24850.11	24715.60	24754.75	335329470
2017/12/18	24739.56	24876.07	24739.56	24792.20	354882350
週4本値	24739.56	24876.07	24697.11	24754.06	255140781

Historical Data by **Stooq**
 Historical Data by **MarketNewsline** (ダウと日経)
 Arrangement by **FX_勝てば官軍?**

Crude Light Oil					出来高
Date	Open	High	Low	Close	出来高
2017/12/22	58.21	58.50	57.87	58.47	542706
2017/12/21	58.02	58.38	57.63	58.36	691728
2017/12/20	57.66	58.12	57.44	58.09	738089
2017/12/19	57.34	57.80	57.20	57.56	749802
2017/12/18	57.40	57.81	56.88	57.22	1057983
週4本値	57.40	58.50	56.88	58.47	

USDJPY					EURJPY					GBPJPY				
日付	始値	高値	安値	終値	日付	始値	高値	安値	終値	日付	始値	高値	安値	終値
2017/12/22	113.36	113.45	113.26	113.29	2017/12/22	134.51	134.55	133.92	134.33	2017/12/22	151.72	151.88	151.39	151.40
2017/12/21	113.35	113.64	113.20	113.36	2017/12/21	134.58	134.89	134.45	134.51	2017/12/21	151.58	151.93	151.30	151.72
2017/12/20	112.86	113.47	112.85	113.35	2017/12/20	133.64	134.78	133.63	134.57	2017/12/20	151.08	152.02	151.08	151.58
2017/12/19	112.56	113.08	112.51	112.86	2017/12/19	132.63	133.92	132.61	133.65	2017/12/19	150.62	151.28	150.40	151.09
2017/12/18	112.63	112.83	112.32	112.56	2017/12/18	132.30	133.01	132.30	132.62	2017/12/18	150.02	151.02	149.98	150.60

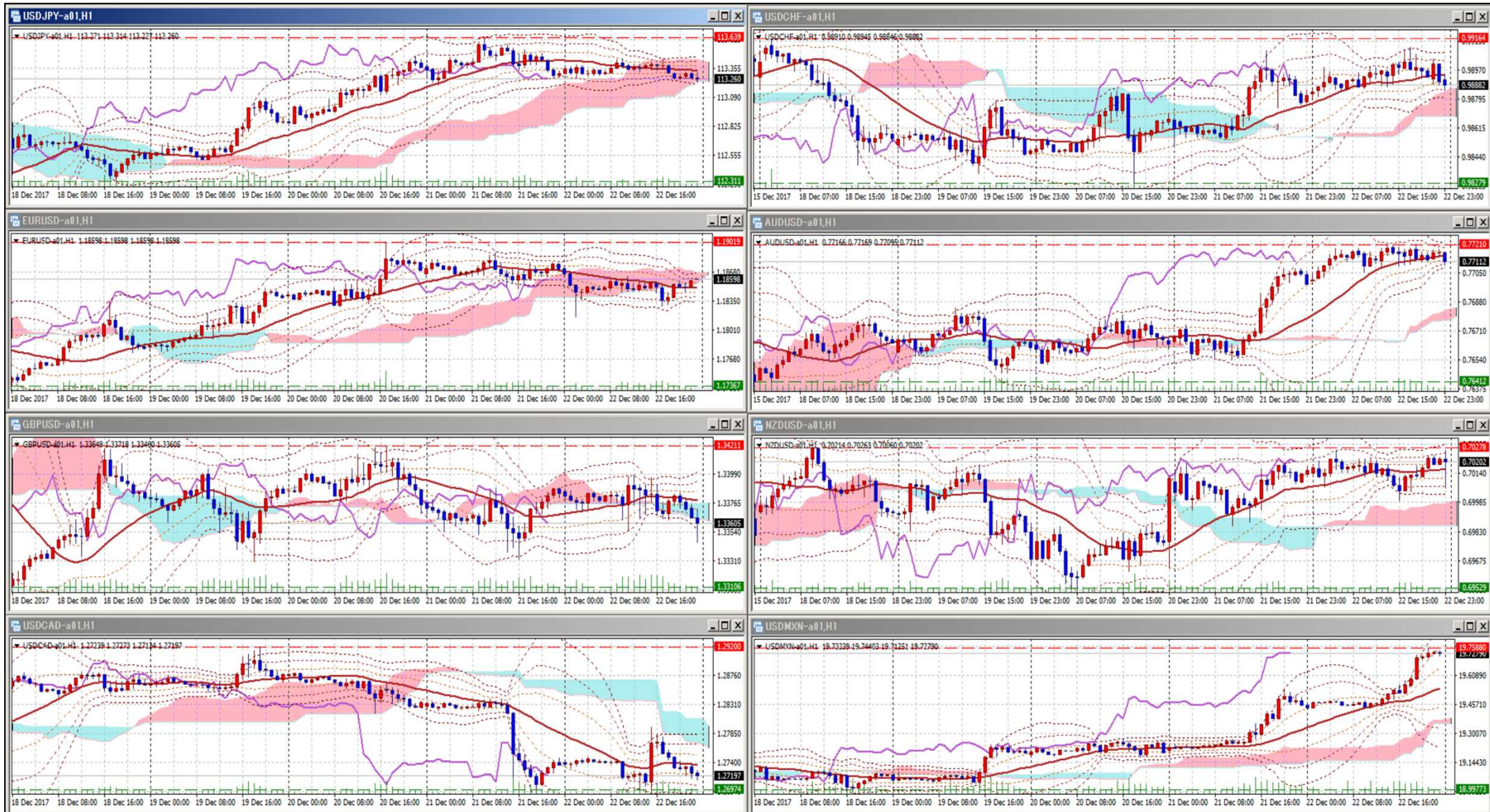
USDJPY Weekly					EURJPY Weekly					GBPJPY Weekly				
日付	始値	高値	安値	終値	日付	始値	高値	安値	終値	日付	始値	高値	安値	終値
2017/12/22	112.63	113.64	112.32	113.29	2017/12/22	132.30	134.89	132.30	134.33	2017/12/22	150.02	152.02	149.98	151.40
2017/12/15	113.58	113.75	112.03	112.58	2017/12/15	133.70	133.89	132.06	132.32	2017/12/15	152.08	152.33	149.42	150.07
2017/12/08	112.74	113.59	112.00	113.49	2017/12/08	133.82	134.05	132.26	133.52	2017/12/08	151.95	153.41	149.77	151.97
2017/12/01	111.60	112.88	110.84	112.12	2017/12/01	133.20	134.38	131.73	133.35	2017/12/01	148.74	152.49	146.98	151.02
2017/11/24	112.19	112.72	111.07	111.56	2017/11/24	132.00	133.24	131.18	133.10	2017/11/24	148.25	149.37	147.65	148.73

先週のIMM取り扱い対ドル8通貨チャート

※ 赤点線は週最高値/青点線は週最低値、BB中心線はSMA21

2017/12/18 ~ 2017/12/22

Chart by OANDA Japan MetaTrader4



Pivot Maker Ver 3.0 by FX_勝てば官軍?

<http://fx.najirane.com>