

CME Daily Volume

FX_勝てば官軍?

<http://fx.najirane.com>

AUS Dollar		MONTHLY OPTIONS	FUTURE	WEEKLY FRIDAY OPTIONS					参考レート	
Date				WK 1	WK 2	WK 3	WK 4	WK 5	Open	Close
2020/1/2 (木)	---	3199	---		247	32	200	258	0.7007	0.6983
2019/12/31 (火)	---	6965	---		239	80	116	61	0.7000	0.7017
2019/12/30 (月)	---	3349	---		397	223	74		0.6980	0.6996
2019/12/27 (金)	---	4678	---		449	147	252		0.6942	0.6978
2019/12/26 (木)	---	1243	---		189	1	46		0.6922	0.6942
2019/12/24 (火)	---	827	---		63		112		0.6916	0.6922
2019/12/23 (月)	---	2589	---		98	405	909		0.6895	0.6916
2019/12/20 (金)	---	1750	---		80	178	674		0.6885	0.6900
2019/12/19 (木)	---	2061	---		1169	450	61		0.6849	0.6884
2019/12/18 (水)	---	2654	---			1142	47		0.6848	0.6849

CAN Dollar		MONTHLY OPTIONS	FUTURE	WEEKLY FRIDAY OPTIONS					参考レート	
Date				WK 1	WK 2	WK 3	WK 4	WK 5	Open	Close
2020/1/2 (木)	---	---	---		641	572	1	571	0.7704	0.7701
2019/12/31 (火)	---	---	---		691	130	32	0	0.7655	0.7698
2019/12/30 (月)	---	---	---		569	46	1	684	0.7651	0.7655
2019/12/27 (金)	---	---	---		143	17	299	0	0.7626	0.7642
2019/12/26 (木)	---	---	---		1	0	202	0	0.7598	0.7626
2019/12/24 (火)	---	---	---		282	2	19	0	0.7607	0.7595
2019/12/23 (月)	---	---	---		438	864	1150	0	0.7605	0.7607
2019/12/20 (金)	---	---	---		1	526	3644	0	0.7619	0.7601
2019/12/19 (木)	---	---	---		1202	796	27	0	0.7624	0.7618
2019/12/18 (水)	---	---	---		521	533	4	0	0.7599	0.7625

SWISS FRANC		MONTHLY OPTIONS	FUTURE	WEEKLY FRIDAY OPTIONS					参考レート	
Date				WK 1	WK 2	WK 3	WK 4	WK 5	Open	Close
2020/1/2 (木)	---	34150	---		---	---	---	---	1.0339	1.0293
2019/12/31 (火)	---	29758	---		---	---	---	---	1.0324	1.0334
2019/12/30 (月)	---	29929	---		---	---	---	---	1.0259	1.0320
2019/12/27 (金)	---	25764	---		---	---	---	---	1.0192	1.0261
2019/12/26 (木)	---	8385	---		---	---	---	---	1.0206	1.0191
2019/12/24 (火)	---	8322	---		---	---	---	---	1.0186	1.0202
2019/12/23 (月)	---	17574	---		---	---	---	---	1.0179	1.0184
2019/12/20 (金)	---	23250	---		---	---	---	---	1.0224	1.0185
2019/12/19 (木)	---	27303	---		---	---	---	---	1.0200	1.0221
2019/12/18 (水)	---	23454	---		---	---	---	---	1.0205	1.0200

EU EURO		MONTHLY OPTIONS	FUTURE	WEEKLY FRIDAY OPTIONS					参考レート	
Date				WK 1	WK 2	WK 3	WK 4	WK 5	Open	Close
2020/1/2 (木)	---	17672	---		906	242	113	2	1.1215	1.1172
2019/12/31 (火)	---	8448	---		862	228	246	4	1.1202	1.1213
2019/12/30 (月)	---	10462	---		1544	320	396	119	1.1179	1.1200
2019/12/27 (金)	---	21631	---		1355	33	2272		1.1096	1.1176
2019/12/26 (木)	---	1298	---		18	4	126		1.1092	1.1096
2019/12/24 (火)	---	1627	---		91	7	756		1.1090	1.1085
2019/12/23 (月)	---	4032	---		270	734	249		1.1078	1.1090
2019/12/20 (金)	---	12568	---		106	2098	6872		1.1124	1.1076
2019/12/19 (木)	---	5924	---		781	2679	739		1.1116	1.1124
2019/12/18 (水)	---	6432	---		51	3619	57		1.1153	1.1116

GB POUND		MONTHLY OPTIONS	FUTURE	WEEKLY FRIDAY OPTIONS					参考レート	
Date				WK 1	WK 2	WK 3	WK 4	WK 5	Open	Close
2020/1/2 (木)	---	104917	---		99	3	520	514	1.3252	1.3140
2019/12/31 (火)	---	91823	---		41	30	73		1.3121	1.3260
2019/12/30 (月)	---	91717	---		242	2	10	25	1.3077	1.3122
2019/12/27 (金)	---	91976	---		19	27	535		1.2999	1.3076
2019/12/26 (木)	---	35578	---		2		13		1.2973	1.2999
2019/12/24 (火)	---	36161	---		3	837	51		1.2940	1.2962
2019/12/23 (月)	---	87874	---		15	95	372		1.2995	1.2940
2019/12/20 (金)	---	90670	---		13	385	317		1.3008	1.3002
2019/12/19 (木)	---	141829	---		73	924	163		1.3083	1.3008
2019/12/18 (水)	---	118005	---		10	2353	1		1.3130	1.3083

JP YEN		MONTHLY OPTIONS	FUTURE	WEEKLY FRIDAY OPTIONS					参考レート	
Date				WK 1	WK 2	WK 3	WK 4	WK 5	Open	Close
2020/1/2 (木)	---	---	111154		687	11	1	20	108.69	108.55
2019/12/31 (火)	---	---	78428		445	101	100	89	108.87	108.60
2019/12/30 (月)	---	---	105832		1239	38	153	0	109.44	108.88
2019/12/27 (金)	---	---	81557		184	243	616	0	109.58	109.43
2019/12/26 (木)	---	---	61595		12	3	15	0	109.39	109.58
2019/12/24 (火)	---	---	38863		68	43	306	0	109.40	109.38
2019/12/23 (月)	---	---	53586		476	434	1630	0	109.46	109.40
2019/12/20 (金)	---	---	83986		319	393	3371	0	109.38	109.50
2019/12/19 (木)	---	---	109529		204	689	152	0	109.57	109.38
2019/12/18 (水)	---	---	77605		0	231	13	0	109.51	109.58

MEX PESO		MONTHLY OPTIONS	FUTURE	WEEKLY FRIDAY OPTIONS					参考レート	
Date				WK 1	WK 2	WK 3	WK 4	WK 5	Open	Close
2020/1/2 (木)	---	29	30480		---	---	---	---	5.2894	5.3052
2019/12/31 (火)	---	8	28761		---	---	---	---	5.2816	5.2852
2019/12/30 (月)	---	30	24357		---	---	---	---	5.3086	5.2816
2019/12/27 (金)	---	59	39256		---	---	---	---	5.2791	5.3007
2019/12/26 (木)	---	1	12862		---	---	---	---	5.2701	5.2791
2019/12/24 (火)	---	0	7905		---	---	---	---	5.2768	5.2690
2019/12/23 (月)	---	6	19027		---	---	---	---	5.2827	5.2768
2019/12/20 (金)	---	4	32232		---	---	---	---	5.2846	5.2826
2019/12/19 (木)	---	3	40527		---	---	---	---	5.2727	5.2846
2019/12/18 (水)	---	0	39903		---	---	---	---	5.2868	5.2727

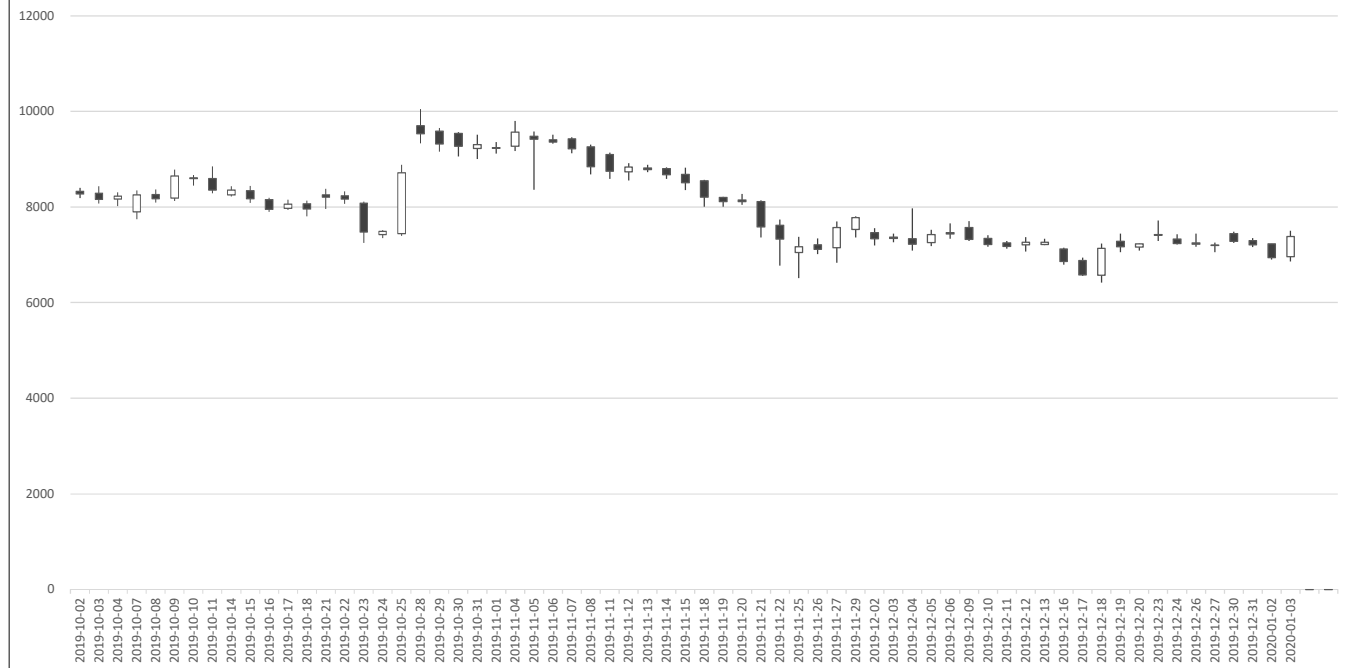
NZ DOLLAR		MONTHLY OPTIONS	FUTURE	WEEKLY FRIDAY OPTIONS					参考レート	
Date				WK 1	WK 2	WK 3	WK 4	WK 5	Open	Close
2020/1/2 (木)	---	200	26316		---	---	---	---	0.6731	0.6698
2019/12/31 (火)	---	36	20501		---	---	---	---	0.6725	0.6731
2019/12/30 (月)	---	4	26001		---	---	---	---	0.6700	0.6725
2019/12/27 (金)	---	0	18837		---	---	---	---	0.6667	0.6699
2019/12/26 (木)	---	0	9214		---	---	---	---	0.6638	0.6667
2019/12/24 (火)	---	0	10908		---	---	---	---	0.6635	0.6639
2019/12/23 (月)	---	8	15524		---	---	---	---	0.6598	0.6634
2019/12/20 (金)	---	55	17905		---	---	---	---	0.6609	0.6604
2019/12/19 (木)	---	10	24856		---	---	---	---	0.6577	0.6609
2019/12/18 (水)	---	214	26283		---	---	---	---	0.6568	0.6577

Bitcoin CME Futures (当月及び限月別)

※取引単位=5ビットコイン (CME CFビットコイン参考基準レート=BRRを対象)

Date	当月(2020/01)						2020/01		2020/02		2020/03		2020/04		
	Open	High	Low	Close	Volume	OpenInt	Close	Volume	Close	Volume	Close	Volume	Close	Volume	
2019-10-02	8330	8400	8185	8270	1943	3346	0		0		8470	5	0		
2019-10-03	8285	8435	8075	8160	2728	3474	0		0		8330	22	0		
2019-10-04	8165	8310	8020	8225	2064	3372	0		0		8375	2	0		
2019-10-07	7900	8350	7745	8255	6220	3386	0		0		8425	35	0		
2019-10-08	8260	8365	8095	8170	2512	3335	0		0		8360	10	0		
2019-10-09	8185	8780	8125	8645	5212	3838	0		0		8835	17	0		
2019-10-10	8605	8670	8445	8595	3011	3687	0		0		8805	39	0		
2019-10-11	8595	8850	8285	8355	1859	3407	0		0		8570	8	0		
2019-10-14	8255	8435	8220	8355	1859	3407	0		0		8565	0	0		
2019-10-15	8340	8440	8085	8170	2847	3444	0		0		8385	3	0		
2019-10-16	8150	8195	7900	7950	3957	3726	0		0		8135	9	0		
2019-10-17	7975	8150	7935	8060	2667	3226	0		0		8255	3	0		
2019-10-18	8065	8130	7805	7960	3888	3193	0		0		8140	18	0		
2019-10-21	8255	8380	7960	8205	4248	3100	0		0		8430	15	0		
2019-10-22	8230	8330	8065	8165	2881	3093	0		0		8410	15	0		
2019-10-23	8080	8110	7245	7475	8187	3702	0		0		7625	94	0		
2019-10-24	7420	7515	7350	7490	5025	3313	0		0		7605	40	0		
2019-10-25	7445	8885	7395	8715	9412	2859	0		0		8890	52	0		
2019-10-28	9700	10050	9330	9530	7242	3033	9660	2	0		9755	28	0		
2019-10-29	9585	9655	9155	9315	3276	3155	9465		0		9575	7	0		
2019-10-30	9540	9565	9060	9270	3687	3296	9410		0		9525	26	0		
2019-10-31	9225	9510	9000	9305	2206	3299	9400		5	0	9555	33	0		
2019-11-01	9230	9360	9120	9235	2780	3260	9380		5	0	9510	14	0		
2019-11-04	9270	9800	9170	9565	3891	3735	9705		51	0	9850	21	0		
2019-11-05	9480	9580	8360	9420	3128	3520	9575		23	0	9710	2	0		
2019-11-06	9405	9515	9325	9360	1409	3462	9520		6	0	9670	2	0		
2019-11-07	9425	9460	9125	9220	3467	3431	9380		6	0	9530	3	0		
2019-11-08	9260	9305	8680	8845	3850	3120	8980		4	0	9120	1	0		
2019-11-11	9100	9135	8585	8750	3846	3094	8880		4	0	9020	1	0		
2019-11-12	8735	8915	8555	8835	3684	3091	8965		0		9105	1	0		
2019-11-13	8815	8880	8730	8785	2163	3107	8920		0		9065	3	0		
2019-11-14	8805	8830	8590	8675	2450	3199	8810		0		8955	4	0		
2019-11-15	8680	8820	8355	8505	4486	3016	8615		18	0	8765	14	0		
2019-11-18	8550	8565	8005	8205	4718	3119	8330		90	0	8475	23	0		
2019-11-19	8200	8215	8005	8110	3396	3157	8225		10	0	8370	8	0		
2019-11-20	8145	8275	8045	8110	4502	3270	8220		33	0	8340	20	0		
2019-11-21	8110	8140	7360	7580	6360	3349	7665		81	0	7795	43	0		
2019-11-22	7620	7735	6775	7330	11537	3349	7385		187	0	7470	91	0		
2019-11-25	7050	7375	6510	7165	11465	3541	7225		121	0	7315	95	0		
2019-11-26	7205	7345	7015	7115	6722	3554	7180		85	0	7250	19	0		
2019-11-27	7150	7700	6835	7570	11761	3390	7670		150	0	7755	58	0		
2019-11-29	7530	7805	7365	7776	4992	2822	7855		79	7840	7930	15	0		
2019-12-02	7465	7555	7195	7335	4506	2982	7400		135	7450	7490	6	0		
2019-12-03	7370	7445	7260	7340	1825	2983	7405		77	7455	7485	32	0		
2019-12-04	7335	7970	7085	7220	9089	3019	7265		366	7305	7350	34	0		
2019-12-05	7255	7525	7180	7420	4555	2915	7470		89	7505	7550	20	0		
2019-12-06	7435	7655	7335	7460	3582	2966	7520		59	7555	7600	9	0		
2019-12-09	7570	7705	7290	7320	3636	3086	7380		78	7425	7460	31	0		
2019-12-10	7345	7410	7165	7215	3515	3232	7275		138	7310	7370	15	0		
2019-12-11	7250	7290	7130	7175	3191	3250	7220		176	7260	7325	35	0		
2019-12-12	7210	7370	7070	7265	4699	3226	7305		147	7335	7415	25	0		
2019-12-13	7215	7335	7200	7265	3980	3208	7295		277	7345	7360	41	0		
2019-12-16	7120	7145	6790	6860	8223	3357	6885		295	6920	6925	191	6950		
2019-12-17	6880	6940	6560	6580	6716	3840	6605		502	6635	6645	192	6670		
2019-12-18	6575	7235	6420	7135	13137	3530	7160		968	7185	7205	310	7225		
2019-12-19	7280	7440	7055	7165	5021	3497	7190		268	7225	7270	135	7295		
2019-12-20	7160	7235	7085	7230	3323	3535	7250		767	7290	7325	63	7350		
2019-12-23	7420	7715	7290	7410	9514	3532	7455		1466	7495	31	7535	164	7560	
2019-12-24	7330	7430	7215	7235	4255	3541	7275		640	7320	27	7350	67	7375	
2019-12-26	7220	7445	7170	7250	5591	3396	7300		1202	7345	17	7385	70	7420	
2019-12-27	7195	7255	7055	7204	4573	2873	7265		4441	7310	16	7340	116	7435	
2019-12-30	7445	7480	7245	7285	3179	3044	7285		3115	7330	12	7385	47	7420	
2019-12-31	7295	7350	7160	7210	3123	3186	7210		2953	7240	98	7285	72	7295	
2020-01-02	7225	7225	6900	6940	4964	3650	6940		4754	6985	150	7040	60	7115	
2020-01-03	6960	7500	6860	7385	9169	0	7385		8657	7415	391	7455	119	7500	

Bitcoin CME Futures



IMM扱い8通貨/ダウ/日経/金/オイル/主要クロス円の過去5日及び過去5週の4本値

AUDUSD					CADUSD					CHFUSD				
Date	Open	High	Low	Close	Date	Open	High	Low	Close	Date	Open	High	Low	Close
2020/01/03	0.6984	0.6987	0.6931	0.6954	2020/01/03	0.7701	0.7715	0.7689	0.7700	2020/01/03	1.0295	1.0322	1.0263	1.0287
2020/01/02	0.7007	0.7020	0.6979	0.6983	2020/01/02	0.7704	0.7711	0.7688	0.7701	2020/01/02	1.0339	1.0343	1.0274	1.0293
2019/12/31	0.7000	0.7032	0.6997	0.7017	2019/12/31	0.7655	0.7721	0.7654	0.7698	2019/12/31	1.0324	1.0366	1.0312	1.0334
2019/12/30	0.6980	0.7005	0.6978	0.6996	2019/12/30	0.7651	0.7662	0.7643	0.7655	2019/12/30	1.0259	1.0337	1.0259	1.0320
2019/12/27	0.6942	0.6987	0.6942	0.6978	2019/12/27	0.7626	0.7654	0.7622	0.7642	2019/12/27	1.0192	1.0277	1.0185	1.0261

CNYUSD					EURUSD					GBPUSD				
Date	Open	High	Low	Close	Date	Open	High	Low	Close	Date	Open	High	Low	Close
2020/01/03	0.1437	0.1437	0.1434	0.1435	2020/01/03	1.1172	1.1180	1.1125	1.1162	2020/01/03	1.3140	1.3161	1.3054	1.3074
2020/01/02	0.1436	0.1437	0.1435	0.1437	2020/01/02	1.1215	1.1225	1.1164	1.1172	2020/01/02	1.3252	1.3266	1.3116	1.3140
2019/12/31	0.1431	0.1437	0.1431	0.1437	2019/12/31	1.1202	1.1239	1.1199	1.1213	2019/12/31	1.3121	1.3284	1.3107	1.3260
2019/12/30	0.1430	0.1433	0.1430	0.1431	2019/12/30	1.1179	1.1221	1.1179	1.1200	2019/12/30	1.3077	1.3150	1.3077	1.3122
2019/12/27	0.1430	0.1430	0.1428	0.1430	2019/12/27	1.1096	1.1188	1.1096	1.1176	2019/12/27	1.2999	1.3117	1.2970	1.3076

JPYUSD					MXNUSD					NZDUSD				
Date	Open	High	Low	Close	Date	Open	High	Low	Close	Date	Open	High	Low	Close
2020/01/03	0.9213	0.9272	0.9206	0.9251	2020/01/03	5.3052	5.3105	5.2557	5.2828	2020/01/03	0.6698	0.6701	0.6644	0.6665
2020/01/02	0.9201	0.9241	0.9186	0.9212	2020/01/02	5.2894	5.3099	5.2802	5.3052	2020/01/02	0.6731	0.6740	0.6685	0.6698
2019/12/31	0.9185	0.9219	0.9185	0.9208	2019/12/31	5.2816	5.3065	5.2786	5.2852	2019/12/31	0.6725	0.6756	0.6720	0.6731
2019/12/30	0.9138	0.9194	0.9136	0.9185	2019/12/30	5.3086	5.3182	5.2767	5.2816	2019/12/30	0.6700	0.6737	0.6696	0.6725
2019/12/27	0.9126	0.9142	0.9125	0.9138	2019/12/27	5.2791	5.3152	5.2749	5.3007	2019/12/27	0.6667	0.6710	0.6667	0.6699

Nikkei 225 - Japan (NIKX)					5営業日以内に休場日あり	
Date	Open	High	Low	Close	(ドル建て終値)	出来高
2020/01/03	--non--	--non--	--non--	--non--	--non--	0
2020/01/02	--non--	--non--	--non--	--non--	--non--	0
2019/12/31	--non--	--non--	--non--	--non--	--non--	0
2019/12/30	23781.15	23782.30	23656.62	23656.62	217.28	0
2019/12/27	23953.75	23966.14	23837.72	23837.72	217.83	448494800
週4本値	23953.75	23966.14	23656.62	--non--	#VALUE!	(N225銘柄計) (東証一部全体計)

XAUUSD					5営業日以内に休業日あり	
Date	Open	High	Low	Close		出来高
2020/01/03	1529.16	1553.40	1528.05	1549.02		
2020/01/02	1518.17	1531.32	1517.32	1529.14		
2019/12/31	1514.89	1525.31	1514.73	1517.31		
2019/12/30	1511.63	1516.17	1510.88	1515.12		
2019/12/27	1511.12	1515.35	1507.44	1510.86		
週4本値	1511.12	1553.40	1507.44	1549.02		

Dow Jones Industrial - USA (DJIA)					5営業日以内に休業日あり	
Date	Open	High	Low	Close		出来高
2020/01/03	28553.33	28716.31	28500.36	28634.88		0
2020/01/02	28638.97	28872.80	28627.77	28868.80		73668133
2019/12/31	28414.64	28547.35	28376.49	28538.44		68714703
2019/12/30	28654.76	28664.69	28428.98	28462.14		55210269
2019/12/27	28675.34	28701.66	28608.98	28645.26		59172869
週4本値	28675.34	28872.80	28376.49	28634.88		

Historical Data by

 Arrangement by


Crude Light Oil					5営業日以内に休業日あり	
Date	Open	High	Low	Close		出来高
2020/01/03	61.18	64.09	61.13	63.05		1783724
2020/01/02	61.60	61.60	60.64	61.18		796011
2019/12/31	61.68	61.88	60.63	61.06		767489
2019/12/30	61.71	62.34	61.09	61.68		695563
2019/12/27	61.73	61.97	61.24	61.72		617881
週4本値	61.73	64.09	60.63	63.05		

USDJPY					EURJPY					GBPJPY				
日付	始値	高値	安値	終値	日付	始値	高値	安値	終値	日付	始値	高値	安値	終値
2020/01/03	108.55	108.63	107.85	108.10	2020/01/03	121.27	121.38	120.17	120.66	2020/01/03	142.63	142.79	141.01	141.33
2020/01/02	108.69	108.87	108.21	108.55	2020/01/02	121.88	122.02	120.98	121.27	2020/01/02	144.03	144.19	142.28	142.63
2019/12/31	108.87	108.88	108.47	108.60	2019/12/31	121.96	122.07	121.70	121.78	2019/12/31	142.86	144.33	142.43	144.00
2019/12/30	109.44	109.46	108.77	108.88	2019/12/30	122.35	122.45	121.84	121.95	2019/12/30	143.12	143.41	142.58	142.87
2019/12/27	109.58	109.59	109.39	109.43	2019/12/27	121.59	122.44	121.49	122.30	2019/12/27	142.44	143.59	141.96	143.10

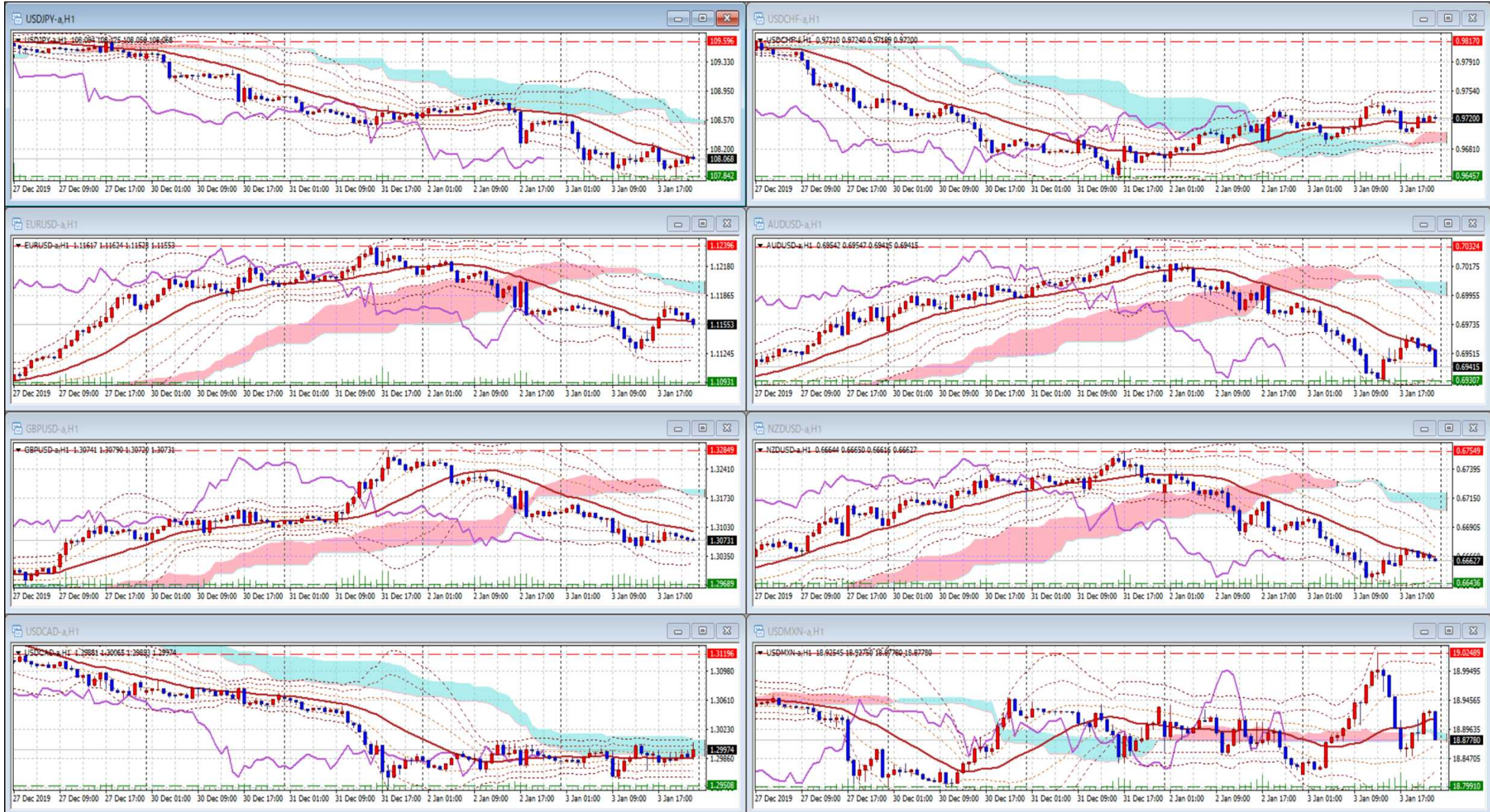
USDJPY Weekly					EURJPY Weekly					GBPJPY Weekly				
日付	始値	高値	安値	終値	日付	始値	高値	安値	終値	日付	始値	高値	安値	終値
2020/01/03	109.58	109.59	107.85	108.10	2020/01/03	121.59	122.45	120.17	120.66	2020/01/03	142.44	144.33	141.01	141.33
2019/12/26	109.57	109.69	109.18	109.58	2019/12/26	121.81	122.05	121.09	121.59	2019/12/26	143.36	143.87	141.18	142.43
2019/12/18	108.55	109.70	108.46	109.58	2019/12/18	120.83	122.65	120.76	121.81	2019/12/18	143.27	147.96	142.50	143.35
2019/12/11	108.86	109.00	108.43	108.55	2019/12/11	120.60	120.93	119.99	120.85	2019/12/11	142.66	143.65	142.38	143.28
2019/12/04	109.54	109.73	108.43	108.86	2019/12/04	120.55	121.02	120.10	120.60	2019/12/04	141.80	142.77	140.84	142.65

先週のIMM取り扱い対ドル8通貨チャート

※ 赤点線は週最高値/青点線は週最低値、BB中心線はSMA21

2019/12/27 ~ 2020/01/03

Chart by OANDA Japan MetaTrader4



Pivot Maker Ver 3.0 by FX_勝てば官軍?

<http://fx.najirane.com>